

DOCK 2000 V1.1

Contents

[Register Information](#)

[Support](#)

[Disclaimer](#)

Introduction

Click on the following picture of Dock 2000 to get help about a specific topic.



Description

Dock 2000 helps you organizing your Applications.

It represents a Application with a button where a icon is drawn on it.

You can easily import application-groups from the Program Manager.

It is also possible to drag and drop applications from the File Manager to DOCK 2000.

After configuring your DOCK 2000 you can start an application through clicking on a button, which represents the Application.

There are two kinds of buttons. Application-buttons and Group-buttons. A Group-button heads a group of Application-buttons. If you press the button a popup with Application-buttons belonging to this Group-button shows up.

Clicking on a Application-button starts the associated application.

If you press the right mousebutton over a button a popupmenu appears.

There you can select a action to perform on this button.

Register Information

To register Dock 2000 go to Compuserve service SWREG (go SWREG) and register with the following ID: 5163 or search for Dock 2000.

The price of Dock 2000 is 47,00 \$.

After I got the confirmation I send you via Compuserve the registered version of Dock 2000. (version without waitloop)

If you don't have access to Compuserve you can send me email via internet, furball@ping.at.

Snailmail
Manfred Lugmayr
Neulerchenfelderstrasse 21/5a
A-1160 Wien
AUSTRIA /EUROPE

I then can send you Dock 2000 on a 31/2 diskette for 7\$ extra.

Support

If you encounter troubles with Dock 2000 or have some ideas for it, you can send me mail to my CompuServe ID: 100340,3461.

the author: Manfred Lugmayr (Vienna, Austria)

Disclaimer

Dock 2000 V1.1 Shareware Version

Copyright by Manfred Lugmayr 1994-1995
This is shareware, all rights are by the author.

After a period of 30 days you must register if you want use the software further on, else you must delete all files from the Dock 2000 package.

No distribution with any commercial product is allowed without the prior permission of the author.

You may copy this version freely, but you have to copy all the files in the package (see readme.txt for file list)

THE PROGRAM IS PROVIDED "AS-IS". NO WARRANTIES OF ANY KIND, EXPRESS OR IMPLIED, ARE MADE AS TO IT OR ANY MEDIUM IT MAY BE ON. WE WILL PROVIDE NO REMEDY FOR INDIRECT, CONSEQUENTIAL, PUNITIVE OR INCIDENTAL DAMAGES ARISING FROM IT, INCLUDING SUCH FROM NEGLIGENCE, STRICT LIABILITY, OR BREACH OF WARRANTY OR CONTRACT, EVEN AFTER NOTICE OF THE POSSIBILITY OF SUCH DAMAGES.

This License terminates upon 30 days prior written notice by either us to the other. If terminated by us by such notice, you may use the Program until the earlier of 30 days after the termination date in the notice.

current Icon

If there are more icons in the Iconfile scrollbars appear and you can scroll in the list. The displayed icon is the selected icon.

Groups

This listbox shows all groups which are available in the Programm Manager.
Select the groups you want to import. (multiple select (Ctrl Key))
Then press the >> Button. The selected groups are now in the
selected Groups listbox.

Applications

Here the application of the selected group in selected Groups listbox are displayed. They are all selected automatically. You can now if you want deselect applications which you do not want to be imported (hold Ctrl key down!).

Application Properties

These are the standard properties like you can find them in the Program Manager:

- Application

- Parameter

- Default Directory

- Quick-Info text (text which will be displayed in the yellow boxes)

- Icon File

You can change the entries them if you like.

When you choose a different Icon file, the Icon listbox shows the new ones.

State Button

This Button determines the drag and drop state of Dock 2000. When you click on it the Symbol changes.



If there is this Symbol on the state button, then a file dragged from the filemanager will be treated as a Application. That means a new Application-button will be generated.



This Symbol on the state button means, that a dragged file will be used to start a application in the dock with the file as commandline parameter.

Caption

The Caption works similar to a Caption of a standard Window. If you click on it and hold the mousebutton down, you can move Dock 2000 around.

By clicking with the right mousebutton you get this popupmenu:



Click on the popupmenu to get further information.

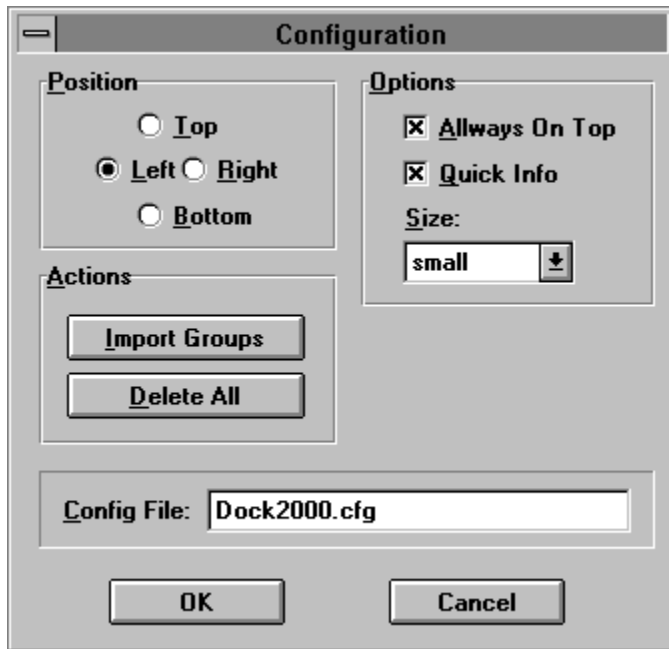
Close

Dock 2000 will be closed and the current configuration are saved in the config file.

Configure

With this dialog can you configure Dock 2000.

Please click on the picture of the dialog to get further information.



Config File

You can choose a different filename for the Config File. Standard is dock2000.cfg.
The option is useful for, to have more than one Dock 2000 running with different configurations. So you can put one left and one right with different Applications.

todo:

Just start a Dock 2000.

Configure it as you like.

choose a different Config file name (eg. dock1.cfg)

Close Dock 2000.

To take effect you have to start a Dock 2000 with the new configfile as commandline.

To do that you can place it in the Program Manager (e.g autostart group)

Delete

By choosing the command the button will be deleted and the dock resized.

Delete All

With this function all buttons will be deleted from Dock 2000. Useful if you want to fill it completely new with applications.

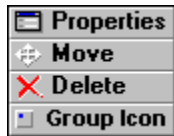
Glossary

Main Button row

This is the main dock. There can be Group-buttons and Application-buttons. Group-buttons are identified with a blue rectangle in the upperleft corner. If you press a Group-button the associated group of Application-buttons.

Pressing a Application-button starts the associated application.

When you click the rightbutton over a button you get the following popupmenu:



Click on the image for further information.

Group Icon

You can take a buttons image to be the image for the heading group button in the main dock. Choosing this command on a group button has no effect.

Import

Press this button to import the selected groups and applications.
The dialog disappear if import is ready.

Group-button Properties

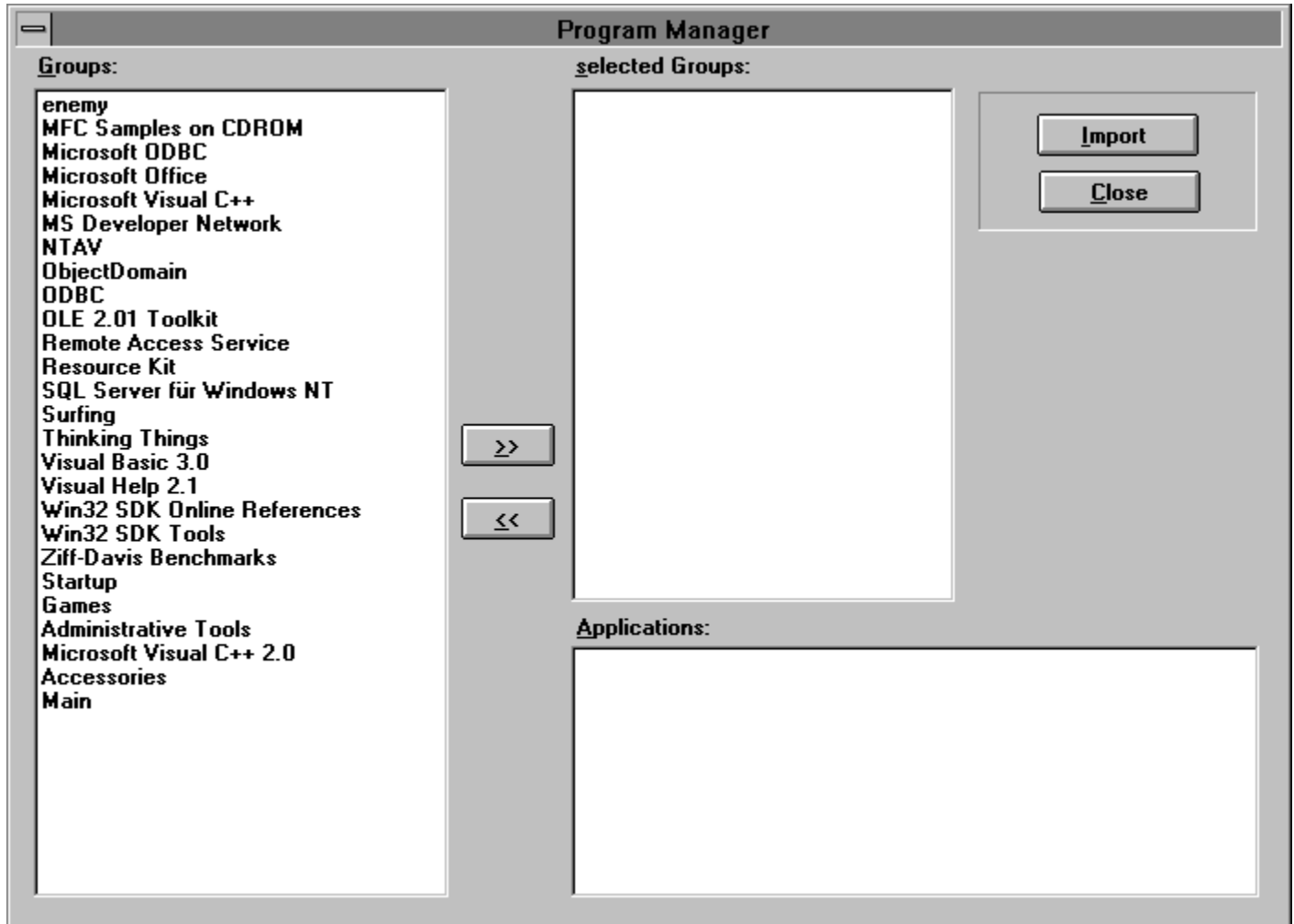
You can select the file from which to take the icon for the Group-button and edit the Quick-Info text.

Help

With this function you load this help file.

Import

Press this button to get the dialog for importing applications or application-groups from the Program Manager:



Click on the image to get further information.

[Errors](#)

Error icons

If an error occurs during import or drag'n' drop of an application, Dock 2000 places following icons instead of the application icon on the button.



NOT VALID, the imported application does not exist.



NO ICON, the imported application does not have an icon.



NO ASSOCIATION, the imported document does not have a filemanager association. You can make a association in the filemanager choosing the command associate for the specific file.

Index

Move

You can move a button in the dock, to change the row order of the button.

The button follow your mouse movement. If you want to place it just click with the left mousebutton.

Options

You got here three options:

- Always on Top

Dock 2000 can be over all the other windows on the desktop. So it is always easy to access. If you choose the small Size and the Position Top it fits nearly in a Caption of a normal window. Try it, I think you like it!

- Quick Info

If this option is selected little yellow labels are shown if you press a button on Dock 2000. In there the name of the application or the groupname is placed.

- Size

You have the choice between three sizes.

Standard

normal Iconsize

Small

half Iconsize

Large

double Iconsize

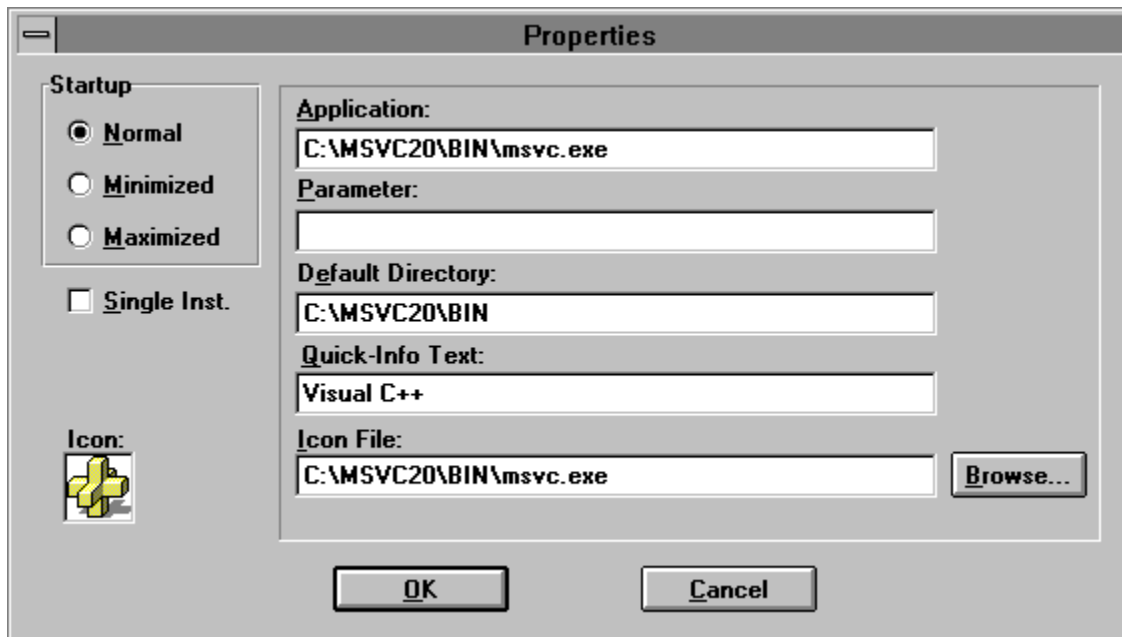
Just try, which size you like best.

Position

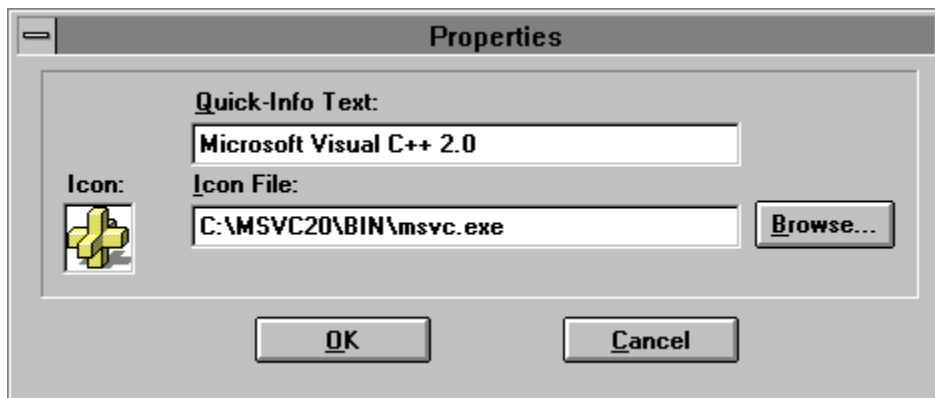
You change the orientation of Dock 2000. It can be vertical or horizontal oriented. In each orientation you have 2 selections (top, bottom ; left,right). These determine in which directions the Groups will be appear. Just Try it.

Properties

Dialog for configuring an Application-Button:



Dialog for configuring an Group-button:



Click on the images to get further help.

PullDown

With this function you can pullup and pulldown the dock. That means if you pullup only the caption remains on the desktop, that saves lots of space!

Selected Groups

Here the groups you want to import are listed.

You can remove groups from this list by selecting the groups you want to remove and press the << button.

When you select a group in the listbox the Applications listbox is filled with the applications in the group.

Single Instance

With this option you can decide if you want only run one instance of the application. If the application is already loaded it gets the focus and is being restored if you press the Application-Button.

This feature only works with native 32bit applications (notepad, pbrush,...)

Startup

Choose the kind of startup, Normal, Minimized, Maximized

Known limitation:

A Commandline Application like (rasdial.exe) can't be started minimized.

Group

This applications belong together. It is like in the Programm Manager. One button heads the group in the main row. The Group appears when you press the Group-button. Holding the button down you can select an Application-button from the group.

If you clicked with the right mousebutton, a popupmenu is shown instead:



Click on the image for further information.

Applications

<Applications>

selected Groups

<SelectedGroups>

