

Contents for EasyKeys Help



Welcome to EasyKeys! EasyKeys turns your computer into an electronic keyboard. Based on the technology of its older sibling, [SuperJAM!](#), EasyKeys allows you to create songs by selecting musical parameters, including style, key, and tempo, while the music plays.

[Getting Set Up](#)

[EasyKeys Overview](#)

[The EasyKeys Main Window](#)

[How To...](#)

Auto Configure

When EasyKeys is run for the first time, it gives you an opportunity to properly configure your sound device. The Auto Configure option performs a series of tests to determine which set up is best suited for use with EasyKeys. These tests help EasyKeys to recognize what type of sound card or MIDI instrument you have in order to insure that the music always plays correctly on it. Your sound device settings may also be configured manually from the [EasyKeys Setup](#) dialog box.

You can run Auto Configure at any time by selecting Auto Configure... from the EasyKeys Setup dialog. To open up this dialog, click on the [Setup button](#) located on the EasyKeys JamBox. If you change your system configuration in a way which affects EasyKeys' performance, simply run Auto Configure again to set up your sound device.

Auto Configure performs two main tests on your system:

1. [Sound Device Test](#)
2. [Drum Channel Test](#)

Overview

Welcome to the World of EasyKeys!

EasyKeys is an extraordinary combination of technology and artistry that puts the power of music in the palm of your hand. By mixing various styles and wave samples, you can create an unlimited number of musical combinations in no time at all.

EasyKeys simulates an electronic keyboard, just like those you'll find at major department stores costing hundreds of dollars or more. With EasyKeys, you can create original music that's entirely your own. In addition, EasyKeys comes with a special JamBox that can record your live performances so you can hear them again and again!

EasyKeys was designed by a team of engineers and musicians who poured their years of experience into its unique user-interface. In fact, each musical style was hand-crafted by a real musician using a computer very similar to yours.

MAJOR FEATURES:

40 different musical grooves to choose from

Country, Dance, Funk, Hip-Hop, Jazz, Boogie, Orleans, Reggae, Rock and Rap buttons change the feel of your music instantly

Includes dozens of sound effects

Three octave keyboard for playing chords and melodies

Drum/Sound Effects Pads let you play combinations of MIDI drum sounds and .WAV files

One-touch Intros, Fills, Breaks, and Endings give your music that professional touch

Use your mouse or computer keyboard to make music

Automatic chord and lead playing

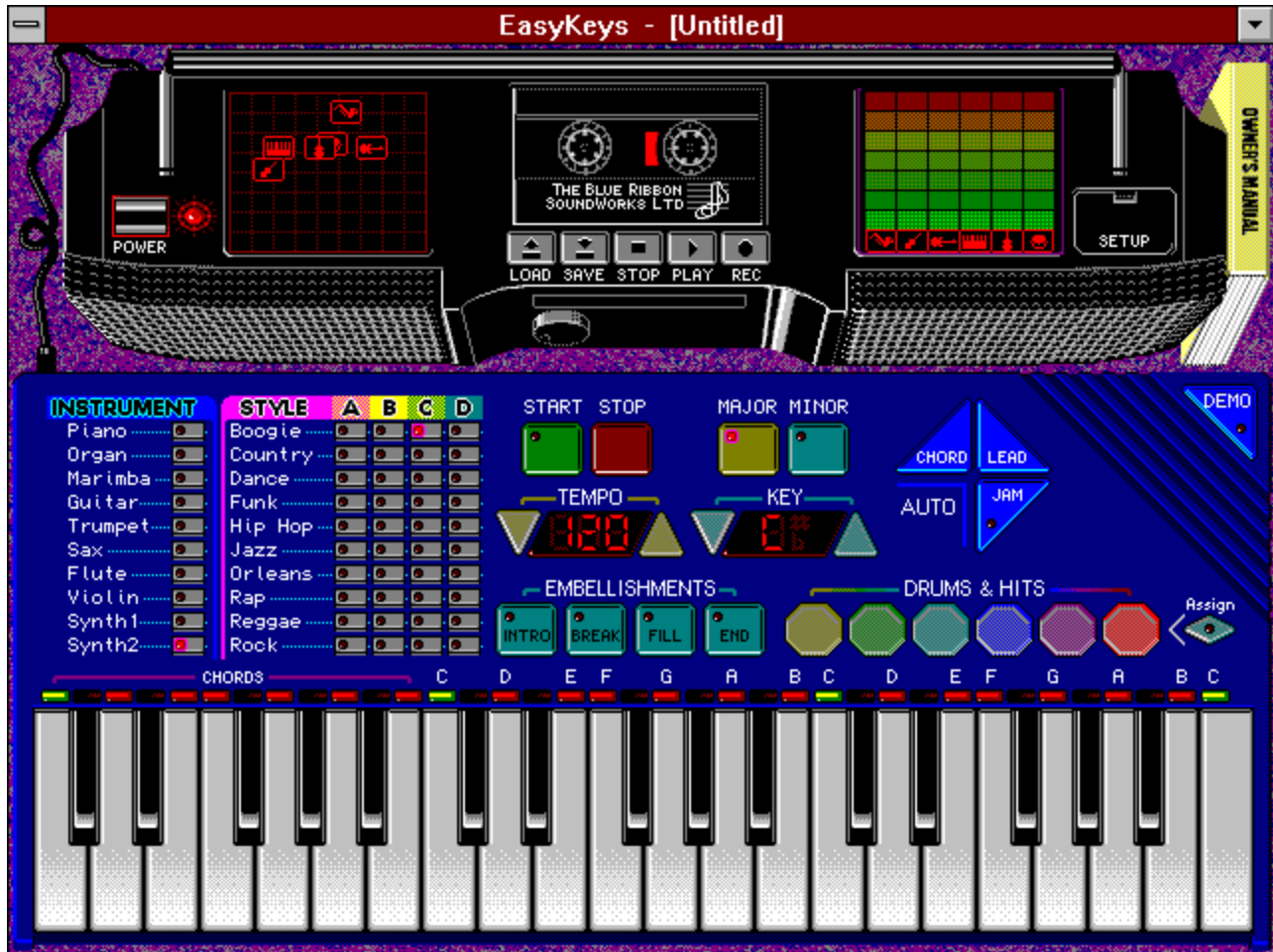
Works with any Windows 3.1 compatible sound card

Real-time LEDs graphically show the music as it plays

Graphical mixing grid for controlling the volume and panning of each performer

EasyKeys Main Window

Click inside this picture to learn more about the EasyKeys main window:



How To...

[Work with the EasyKeys Keyboard](#)

[Work with the EasyKeys JamBox](#)

[Find out more about SuperJAM!](#)

Working with the Keyboard

The Keyboard is a full-featured music keyboard with an in-house band that performs under your command, creating professional accompaniments to the melodies you play. It even has extensive facilities to help you perform your own melody lines and sound effects effortlessly.

[Choosing a Lead Instrument](#)

[Choosing a Style](#)

[Choosing a Key](#)

[Choosing a Tempo](#)

[Playing Chords](#)

[Playing A Melody](#)

[Playing Drums and Sound Effects](#)

[Choosing Drums and Sound Effects](#)

[Starting and Stopping](#)

[Playing Intros, Fills, Breaks, and Endings](#)

[Clearing a Stuck Note](#)

[Playing the Demo Song](#)

Choosing a Lead Instrument

Down the left hand side of the Keyboard is the Instrument List, which contains ten instrument choices.



Click on the button to the right of an instrument name to select it. Now, play some notes with the mouse or the computer keyboard and hear your new instrument selection.

Keyboard Shortcuts: Press the Control key and select a number to choose an instrument from your computer keyboard.

Choosing a Style

EasyKeys comes with ten musical styles, each broken down into a set of four versions. Select a style and version by clicking on your choice from the grid of Style buttons.



The four versions, labeled A through D represent different variations of the style. In all cases, the A version is the simplest and the D version is the most complex.

Keyboard Shortcut: Use the Shift key and the number keys, '1' through '0' to select between the ten styles. F5 thru F8 select versions A thru D of the current style.

Suggested Tempos

Choosing a Key

EasyKeys supports both the major and minor keys. The major key is often associated with a happy mood, while the minor key has a tint of sadness.



Click on the Minor button and listen to how the music changes. Notice that the pattern of lights above the piano keys also change, indicating which notes are in the minor key.

Click on the chord piano keys and see how different your music sounds in harmonic minor! Notice that the chords have changed to suit the minor key.

Keyboard Shortcut: Press the '[' key on your computer keyboard to select Major, the ']' key to select minor.

You can also change the root note of the key (the Piano key with the green light above.)



Click on the up or down arrows to change the root note of the key. Notice that the music shifts up and down in pitch, but maintains the same tonality. Notice also that the Piano lights move left or right, changing with the key.

By selecting the piano keys marked with either a green or red light when making chord changes, you make certain that your musical piece remains within the designated key.

Keyboard Shortcut: Change the key by pressing the up and down arrows on your computer keyboard.

Choosing a Tempo

Try a different tempo by clicking on the arrows to the left and right of the Tempo display.



Each click of the mouse moves the tempo numbers higher or lower by one increment. Hold the mouse down and the numbers start to rapidly increment. Hold down on the left and right mouse button together and the tempo numbers jump by increments of 10.

Keyboard Shortcut: Raise or lower the tempo from your computer keyboard by pressing the left and right arrow keys. Press the shift key at the same time to jump by larger increments.

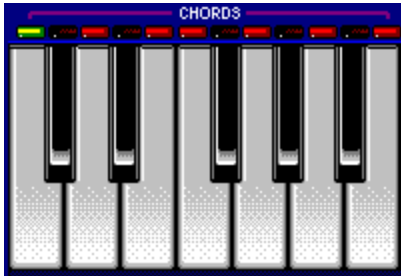
Suggested Tempos

Suggested Tempos

Boogie	157
Country	126
Dance	100
Funk	104
Hip Hop	94
Jazz	124
Orleans	200
Rap	90
Reggae	144
Rock	144

Playing Chords

Click on one of the chord piano keys in the leftmost octave of the EasyKeys keyboard.



If EasyKeys is performing, the music automatically shifts in tone to follow your chord choice. Otherwise, EasyKeys simply plays the three or four notes of the chord.

Click on another piano key. Continue to click on different keys. Notice how effortlessly the music follows the chord changes as you enter them.

Keyboard Shortcuts: You can also choose chords from your computer keyboard. The top two rows of your computer keyboard select chords. The keys in the second row, starting with 'Q' and ending with 'I', select chords in the musical key. The number keys, starting with '2' and ending with '8' select chords outside the musical key. If this all sounds too technical, don't worry. Chords 'Q' through 'I' always sound great. Try the number keys every now and then if you'd like to make your music more interesting.

You can also let EasyKeys choose a chord for you. Every time you'd like to choose a fresh new chord, click on the Auto-Chord button.



EasyKeys chooses a chord that works well within the framework of the current chord and key.

Keyboard Shortcuts: Press the '~' key (top left) for a new chord.

Playing A Melody

EasyKeys provides several different ways to play a melody:

[Playing a Melody with the Mouse](#)

[Playing a Melody with the Computer Keys](#)

[Playing a Melody with EasyKeys' Assistance](#)

Playing Drums and Sound Effects

Six drum pads are located on the right side of the Keyboard, just above the piano keys. These are the Drums & Hits pads.



You may assign a MIDI drum note or audio Wave file to each drum pad.

Click on the Drums & Hits pads with the mouse to play a drum sound or audio sound effect.

Keyboard Shortcuts: Press the keys in the second row from 'H' to '"'. These six keys trigger the corresponding Drums & Hits pads.

Choosing Drums and Sound Effects

You can assign each Drums & Hits pad to play either a specific drum sound or audio wave file. To do so, click on the Assign button to the right of the drum pads, then click once on the drum pad you'd like to change.



This opens the Drum Pad Assignment dialog box.

Choose a drum from the set of standard MIDI drums that your sound card supports, or load a specific wave file.

The MIDI Drum sounds are built into your sound card. Depending on the sound quality of your card, your MIDI drums could be anything from pathetic to downright awesome. MIDI drums have the distinct advantage of requiring little processing or file overhead.

Wave files are loaded from disk. In addition to the collection of drum and sound effect wave files that come with EasyKeys, you can load any standard audio Wave files. If you have a microphone and wave recording software, you can even design your own sound effects!

When you close EasyKeys, it saves the current Drum Pad configuration. When you next run EasyKeys, it reloads the same configuration.

Starting and Stopping

Click on the Start and Stop buttons to begin and end the performance.



Keyboard Shortcuts: Press the Enter key to start and stop.

Playing Intros, Fills, Breaks, and Endings

Use the four Embellishment buttons to add a little flair to your performance.



If you click on the Intro button, the band plays a smooth little introduction and then breaks into the currently selected style. Clicking on the Intro button also starts the performance if the band is not currently playing.

If you click on the Fill button, the band waits until the next appropriate moment, then plays a musical embellishment designed to complement the groove.

If you click on the Break button, the band inserts a break, or musical pause, in the performance, then returns to jammin' as usual.

If you click on the End button, the band finishes the song and stops playing.

Keyboard Shortcuts: Select the embellishments from your computer keyboard by pressing 'A' for Intro, 'S' for Break, 'D' for Fill, and 'F' for End.

Clearing a Stuck Note

It is possible for a sound card to get confused and leave a note "stuck" on. If that happens, press the Delete key on your computer keyboard. This sends MIDI messages which ensure that all hanging notes turn off.

Playing the Demo Song

Following in the spirit of recreating an electronic keyboard, EasyKeys includes a Demo Button. Click on the button to hear a prerecorded performance via your sound card.

The Demo song is actually a [SuperJAM!](#) performance. Click on the Demo button and listen. The song was completely composed and performed by SuperJAM!, with no additional sequencing or editing. SuperJAM! takes the next step beyond EasyKeys by providing unlimited style access and complete song building. Using SuperJAM!, you can easily craft songs of the same level of sophistication and variety as the demo song.

Working with the JamBox

Use the JamBox to mix, record, and play back your EasyKeys performance.

[Setting Volume and Panning](#)

[Viewing the JamBox LEDs](#)

[Working with the Cassette Tape Controls](#)

[Recording a Performance](#)

[Playing a Performance](#)

[Loading and Saving Performances](#)

[Setting up your sound card](#)

Setting Volume and Panning

Use the Mixing Grid to set the volume and pan (left-right balance) of each EasyKeys band member.



The Mixing Grid displays one icon for each of the six band members. Drag a band member up to increase the volume, down to decrease it. Drag a band member to the left to pan the instrument to the left stereo speaker, to the right to pan the instrument right.

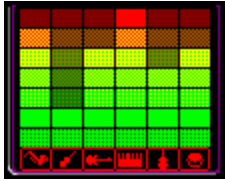
The six band members in the Mixing Grid correspond to the six band members under the volume LED's. Notice that, as you drag an icon up or down, the LED's increase or decrease in height.

Some sound cards do not support pan. With these cards, dragging the instrument from left to right has no effect. Some older cards do not support volume. With these cards, dragging the instrument up and down has no effect.

Although the Mixing Grid controls all of the musical instruments, it can not set the volume or pan of the sound effects played by the drum pads. To set the wave volume, use the mixing console that comes with your sound card.

Viewing the JamBox LEDs

The LED columns on the right display the volume of each of the six EasyKeys performers.



The six performers are, from left to right:

The Lead Player (includes Lead and Jam parts)

The Strings Player

The Guitar Player

The Keyboard Player

The Bass Player

The Drummer (includes Drums & Hits)

The LED's light up, indicating activity by each performer.

Working with the Cassette Tape Controls

Use the Tape Recorder to record and play back your performances.



The Tape Recorder memorizes your complete performance and saves it to disk. You can load a previously recorded performance into the Tape Recorder and play it back.

To record a performance, click on the Record button. Then, start the EasyKeys keyboard by clicking on the Start or Intro buttons and perform to your hearts content.

After you've completed your performance, click on the Cassette Deck's Stop button.

To play the performance back, click on the Play button. The JamBox faithfully repeats your performance, taking it from the top and including everything, from sound effects to tempo changes and style changes.

Click on the Stop button to stop the performance playback.

To save the performance, click on the Save button. This opens the file dialog where you may choose a file to save to.

To retrieve a previously recorded performance from disk, click on the Load button.

Keyboard Shortcuts: Press the Insert key to activate record, the End key to stop, and the Home key to play.

Recording a Performance

Use the Tape Recorder to record your performance.



To record a performance, click on the Record button. Then, start the EasyKeys keyboard by clicking on the Start or Intro buttons and perform to your hearts content.

After you've completed your performance, click on the Cassette Deck's Stop button.

To play the performance back, click on the Play button. The JamBox faithfully repeats your performance, taking it from the top and including everything, from sound effects to tempo changes and style changes.

Click on the Stop button to stop the performance playback.

Keyboard Shortcuts: Press the Insert key to activate record, the End key to stop, and the Home key to play.

Playing a Performance

Use the Tape Recorder to play back previously recorded performances.



Once you've recorded a performance or loaded one from disk, you can play it back by clicking on the Play button in the JamBox.

The JamBox faithfully repeats your performance, taking it from the top and including everything, from sound effects to tempo changes and style changes.

Click on the Stop button to stop the performance playback.

Keyboard Shortcuts: Press the Home key to start playback and the End key to stop.

Loading and Saving Performances

You can save your JamBox performance to disk for later listening pleasure. Use the Save button to do so.



To save to disk, click on the Save button. Enter a file name into the File Dialog and save your performance for later.

To load a previously saved performance, click on the Load button. Choose a file from the File Dialog and open it. Then click on the Play button to hear it.

The JamBox saves your drum and sound effects choices with the song. However, if the sound effect wave files can not be found when the performance loads, EasyKeys simply uses the previously loaded sound effect.

Setting Up Your Sound Card

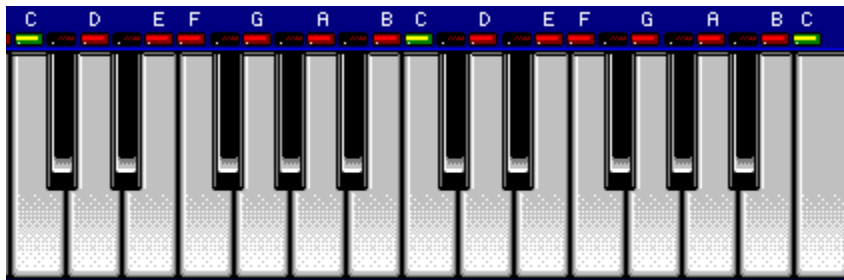
To configure EasyKeys for your sound card, click on the Setup button.



This opens the [Setup Dialog](#).

Playing a Melody with the Mouse

You can click with the mouse on the EasyKeys Keyboard. The upper twenty five piano keys play musical notes.



Click on the piano keys with the mouse. You should hear notes.

Notice the green and red lights above the piano keys. These indicate which notes are within the current musical key. A red light indicates a member of the key while a green light indicates the root note of the key. If you only click on notes that are red or green, your melody will sound more musical.

Playing a Melody with the Computer Keys

You can also play notes from your computer keyboard. Press any keys on the bottom row, from 'Z' on the left to '?' on the right. These always play a note within the musical key. As a result, they always play a note that sounds "in tune."

As you change chords and key, the exact note that each computer key plays also changes. This helps guarantee a melody that makes musical sense.

Playing a Melody with EasyKeys' Assistance

EasyKeys has two ways to help you perform a melody: the Auto-Lead and Auto-Jam buttons.



Use the Auto-Lead button if you'd like to tap out a melody and have EasyKeys pick the notes for you. Simply click on the Auto-Lead button. Each time you tap on this button, EasyKeys chooses a note to play.

Keyboard Shortcut: Press the Space Bar key to play a note.

You can also let EasyKeys compose and play its own melody. Click on the Auto-Jam button. EasyKeys performs a melody to the music. Click again on the Auto-Jam button to stop.

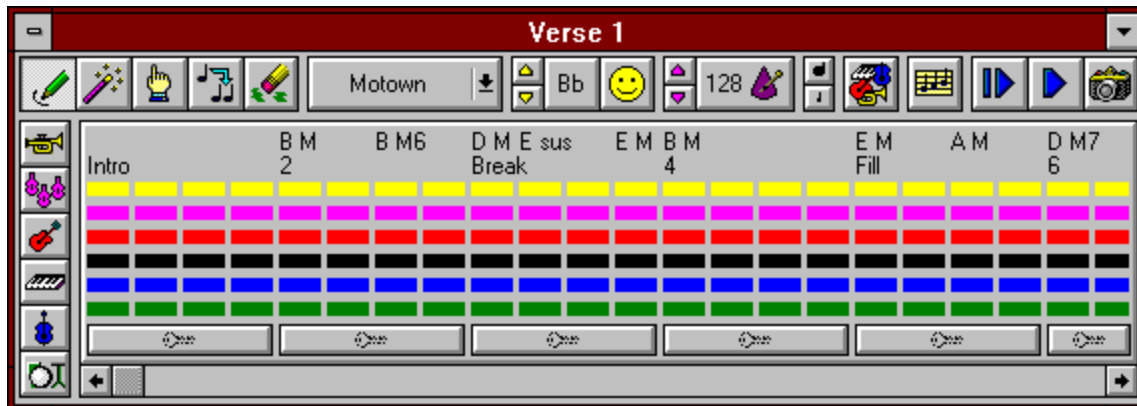
Keyboard Shortcut: Press the 'G' key to toggle Automatic JAM mode on and off.

Moving up to SuperJAM!

Congratulations on your purchase of EasyKeys! We know you will have hours upon hours of creative enjoyment.

After using EasyKeys for awhile, you may want to dig a little deeper. Although EasyKeys is a remarkably capable program, it is only a small subset of its larger sibling, SuperJAM!.

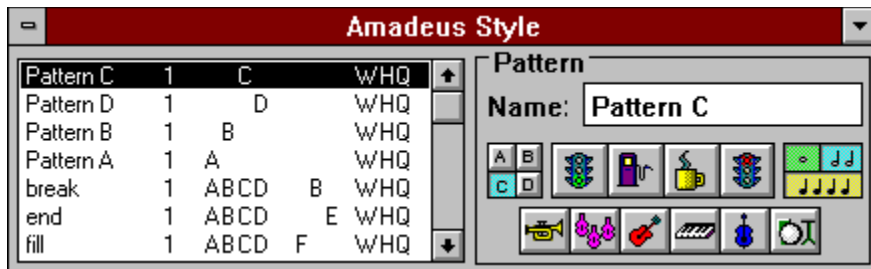
In fact, SuperJAM! picks up where EasyKeys leaves off. Here's a brief tour of some of the Windows you'll see in SuperJAM!:



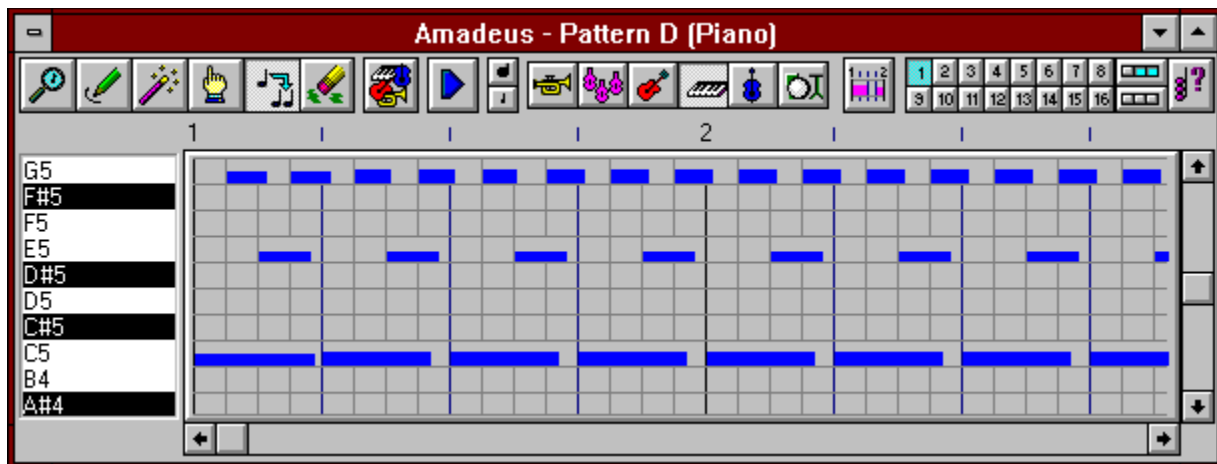
Section creation, editing, and saving. Build songs section by section using limitless combinations of different styles, keys, and tempos. Interactive section design allows you to hear your sections performed flawlessly while you add chords, embellishments, and grooves.



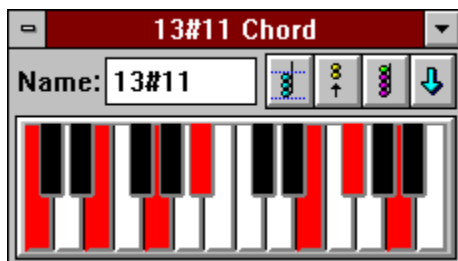
Unlimited song construction and arranging. Perform your SuperJAM! compositions from SuperJAM!'s Song window. Using the handy mouse editing tools, you can create, edit, remove, arrange, and audition your song's sections. You can even add your own lead line to give your song the finishing touch!



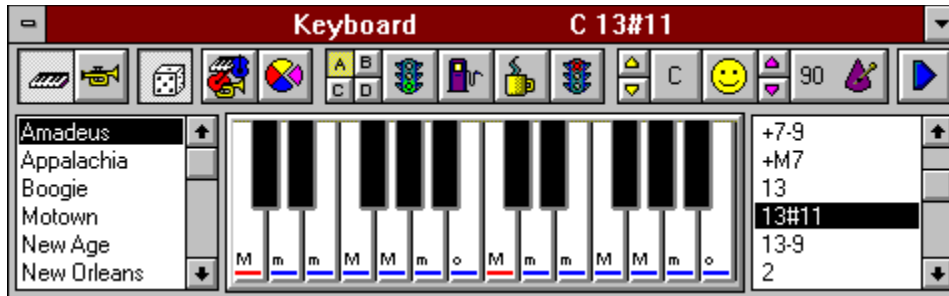
Style creation, editing, and saving. Design your own styles with SuperJAM!'s sophisticated style creation tools. For example, all EasyKeys' styles were created within SuperJAM!. Edit existing styles or build new styles from scratch. Discover how remarkably easy it is to create your own styles.



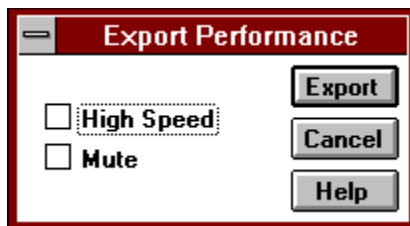
Pattern Grid Editor. Edit your Style Patterns graphically in the interactive, looping, Pattern Grid Editor. Interactively record notes using your mouse or MIDI Keyboard, or draw notes directly into a Style Pattern using the Pattern Grid.



Chord creation, editing, and saving. Design and edit your own chords in SuperJAM!'s Chord window. Interactive chord design allows you to hear the chord performed in a particular style as you add and remove notes from it. Configure the Chord Palette with just the chords you wish to use.



Interactive Keyboard window. SuperJAM!'s Keyboard window is where it all begins. From the Keyboard window you can audition any style, groove, tempo, band, key, chord, or embellishment. The Keyboard window is also where style, chord, band, and section creation is initiated.



MIDI File saving. Export your SuperJAM! compositions as standard MIDI files for use with other applications. Almost all music programs, including notational, sequencing, and multi-media presentation packages, are compatible with MIDI files created with SuperJAM!.

Additionally, SuperJAM! includes the following features:

30 styles.

30 section demos.

Unlimited style access. SuperJAM! allows you to install any number of styles in its Style Palette. In addition to the 30 styles included, you can load any of the 60+ styles from the SuperJAM! Power Series style collections (plenty more on the way...!)

Ready-made musical arrangements and chord progressions. Choose from dozens of pre-arranged chord changes, useful for effortless song construction.

Unlimited Chord types. SuperJAM!'s Chord Palette comes with a huge variety of chord types, including sophisticated two-octave chord configurations. You can even create your own chords.

Handy mouse editing tools. Make changes to songs, sections, styles, and patterns quickly and easily.

MIDI input support. Use your MIDI instrument to interactively play chords and melodies.

Full Featured Bands with user-configurable performers. Maintain separate bands for each section you create with SuperJAM!. Assign any instrument to each of the performers, and even set their volume and panning graphically!

Snapshot editing and recording. Capture your performances using SuperJAM!'s SnapShot feature. Customize them to your liking so you can hear them again and again.

If you'd like to learn more about moving up to SuperJAM!, please call **The Blue Ribbon SoundWorks** at **1-800-226-0212**.

Power Button

Click on the Power button to close EasyKeys down.

Mixing Grid

Drag the icons within this grid to set each instrument's volume and panning.

The Mixing Grid displays one icon for each of the six band members. Drag a band member up to increase the volume, down to decrease it. Drag a band member to the left to pan the instrument to the left stereo speaker, to the right to pan the instrument right.

Note: Some sound cards do not support pan. With these cards, dragging the instrument from left to right has no effect. Some older cards do not support volume. With these cards, dragging the instrument up and down has no effect.

The six band members in the Mixing Grid correspond to the six band members under the volume LED's. Notice that, as you drag an icon up or down, the LED's increase or decrease in height.

Although the Mixing Grid controls all of the musical instruments, it can not set the volume or pan of the sound effects played by the drum pads. To set the wave volume, use the mixing console that comes with your sound card.

Load Performance Button

To load a previously saved performance, click on the Load button. Choose a file from the File Dialog and open it. Then click on the Play button to hear it.

Save Performance Button

To save your JamBox performance to disk for later listening, click on the Save button and enter a file name into the File Dialog.

You must record a performance with the Record button before saving it.

The JamBox saves your Drum Pad assignments with the song.

JamBox/Stop Performance Button

Click on the Stop button to stop the performance playback.

Keyboard Shortcut: Press the End key to stop.

JamBox/Play Performance Button

To play the performance back, click on the Play button. The JamBox faithfully repeats your performance, taking it from the top and including everything, from sound effects to tempo changes to style changes.

You must record or load a performance before playing it.

Keyboard Shortcuts: Press the Home key to play.

Record Performance Button

To record a performance, click on the Record button. Then, start the EasyKeys keyboard by clicking on the Start or Intro buttons and perform to your hearts content.

After you've completed your performance, click on the JamBox's Stop button. To play the performance back, click on the Play button. The JamBox faithfully repeats your performance, taking it from the top and including everything, from sound effects to tempo changes to style changes.

Keyboard Shortcuts: Press the Insert key to activate record.

Volume LEDs

The LED columns display the volume of each of the six EasyKeys performers.

The six performers are, from left to right:

- The Lead Player (includes Lead and Jam parts)

- The Strings Player

- The Guitar Player

- The Keyboard Player

- The Bass Player

- The Drummer (includes Drums & Hits)

The LED's light up, indicating activity by each performer.

Setup Button

To configure EasyKeys for your sound card, click on the Setup button. This opens the [EasyKeys Setup Dialog](#).

The EasyKeys Setup Dialog is where you can configure your sound device for use with EasyKeys. You may change these settings manually, or use the [Auto Configure](#) option which tests all available setup options for you.

Owner's Manual

EasyKeys comes with complete on-line documentation. Click on the Owner's manual to access everything from command descriptions to late breaking news to upgrade information.

Demo Button

Just like an electronic keyboard, EasyKeys has a Demo button. Click on this button to hear a demonstration of EasyKeys in action.

The Demo song is actually a [SuperJAM!](#) performance. Click on the Demo button and listen. The song was completely composed and performed by SuperJAM!, with no additional sequencing or editing. SuperJAM! takes the next step beyond EasyKeys by providing unlimited style access and complete song building. Using SuperJAM!, you can easily craft songs of the same level of sophistication and variety as the demo song.

Instrument Selector Buttons

Choose a lead instrument from the list of ten. Click on the button to the right of an instrument name to select it. The instrument you choose is used for the lead (melody) part.

Keyboard Shortcuts: Hold down the Control key and select a number to choose an instrument.

Style Selector Buttons

EasyKeys comes with ten musical styles, each broken down into a set of four versions. Select a style and version by clicking on your choice from the grid of Style buttons.

The four versions, labeled A through D represent different variations of the style. In all cases, the A version is the simplest and the D version is the most complex.

Like all Keyboard commands, feel free to change the style while the music plays.

Keyboard Shortcuts: Use the Shift key and the number keys, '1' through '0' to select between the ten styles. F5 thru F8 select versions A thru D of the current style.

Suggested Tempos

Keyboard/Start Button

Start the EasyKeys Keyboard jammin' by clicking on the Start button.

Keyboard Shortcuts: Press the Enter key to alternately start and stop the performance.

Keyboard/Stop Button

Stop the EasyKeys Keyboard performance by clicking on the Stop button.

Keyboard Shortcuts: Press the Enter key to alternately start and stop the performance.

Major or Minor Key Buttons

Click on the Major button to change the key signature to a Major key. Click on the Minor button to switch to a harmonic minor key. The major key is often associated with a happy mood, while the minor key offers a tint of sadness.

Notice that the pattern of LEDs above the piano keys also change, indicating which notes are in the minor key.

Keyboard Shortcuts: Press the '[' key on your computer keyboard to select Major, the ']' key to select minor.

Auto-Chord Button

You can let EasyKeys choose your chords for you. Every time you'd like to choose a fresh new chord, click on the Auto-Chord button. EasyKeys chooses a chord that works well within the framework of the current chord and key.

Keyboard Shortcuts: Press the '~' key (top left) for a new chord.

Auto-Lead Button

You can tap out a melody and let EasyKeys pick the notes or you. To do so, click on the Auto-Lead button. Each time you tap on this button, EasyKeys chooses a note to play.

Keyboard Shortcuts: Press the Space Bar key to play a note.

Auto-Jam Button

When the Auto-Jam button is enabled, EasyKeys composes and plays its own melody. Click on the Auto-Jam button to enable and disable the Jam feature.

Keyboard Shortcuts: Press the 'G' key to toggle Automatic JAM mode on and off.

Tempo Buttons

Change the tempo by clicking on the arrows to the left and right of the Tempo display.

The Tempo determines the speed of the performance, how fast or slow the music plays.

Each click of the mouse moves the tempo numbers higher or lower by one increment. Hold down on the left and right mouse button together and the tempo numbers jump by increments of 10.

Keyboard Shortcuts: Raise or lower the tempo from your computer keyboard by pressing the left and right arrow keys. Press the shift key at the same time to jump by larger increments.

Suggested Tempos

Key Signature Buttons

Click on the up or down arrows to change the root note of the musical key, or Key Signature.

Notice that the music shifts up and down in pitch, but maintains the same tonality. Notice also that the Piano lights above the keys move left or right to accommodate the key signature change.

Keyboard Shortcuts: Change the key by pressing the up and down arrows on your computer keyboard.

Embellishment Buttons

Use the four Embellishment buttons to add a little flair to your performance.

Click on the Intro button to start your performance with a smooth little introduction which then breaks into the currently selected style.

While your band is playing, click on the Fill button. At the next appropriate moment, the band plays a musical embellishment designed to complement the groove.

Or, click on the Break button. The band breaks down the groove and pauses for a moment, then returns to jammin' at its normal state.

To finish the performance, click on the End button. The band neatly ends the song.

Keyboard Shortcuts: Select the embellishments from your computer keyboard by pressing 'A' for Intro, 'S' for Break, 'D' for Fill, and 'F' for End.

Drums & Hits Pads

Click on the Drums & Hits pads with the mouse to play a drum sound or audio sound effect.

Keyboard Shortcuts: Press the keys in the second row from 'H' to '''. These six keys trigger the corresponding Drums & Hits pads.

Drums & Hits Assign Button

To assign a MIDI drum note or Wave sample file to a Drum & Hits pad, click first on the Assign button, then once on the intended drum. This opens the Drum Pad Assignment dialog box.

Keyboard/Chord Octave

Using the leftmost twelve piano keys, you can select twelve different chords.

Click with the mouse on each note and listen to the chord. By telling EasyKeys which chord to play, you give EasyKeys important musical instructions that help it create music for you.

Keyboard Shortcuts: The top two rows of your computer keyboard select chords. The keys in the second row, starting with 'Q' and ending with 'I', select chords in the musical key. The number keys, starting with '2' and ending with '8' select chords outside the musical key. If this all sounds too technical, don't worry. Chords 'Q' through 'I' always sound great. Try the number keys every now and then if you'd like to make your music more interesting.

Keyboard/Melody Octaves

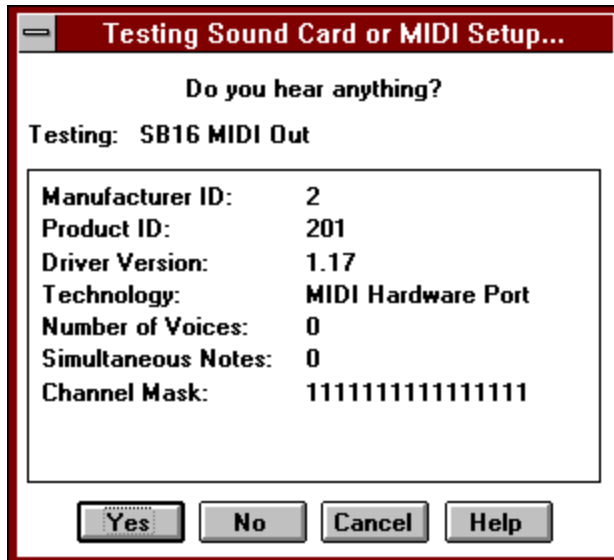
The upper twenty five piano keys play musical notes.

Click on the keys with the mouse. You should hear notes. Notice the green and red lights above the keys. Green indicates the root note of the musical key, while red indicates a member note. If you stick with the lights, it's hard to play a melody that doesn't sound musical.

Keyboard Shortcuts: You can also play notes from your computer keyboard. Press any keys on the bottom row, from 'Z' on the left to '?' on the right. Each key plays a note in the scale. You can use your computer keyboard to easily play a melody. The keys always play a note within the musical key you have selected. As a result, they always play a note that sounds "in tune."

Sound Device Test

Click inside this picture to learn more about the Sound Device Test dialog:



The Sound Device Test, performed first in Auto Configure, checks your sound card/MIDI resources by attempting to play music through them directly. If you are using more than one sound card or MIDI interface, you can use the Sound Device Test to audition each one of them for use with EasyKeys. If you hear sound coming from the device being tested, answer Yes. EasyKeys records this information and uses that device by default for all EasyKeys sessions thereafter. You can change this setting at any time by running Auto Configure again, or change it directly by clicking on the [Setup button](#) on the JamBox. If you do not hear sound when asked, or if you wish to select a different sound source, answer No. Answering No results in EasyKeys testing the next available device. If you answer No for all available sound devices, your system is tested using the Windows MIDI Mapper's current MIDI setup, if it is available. For more information on the MIDI Mapper, consult your Windows documentation.

Note: If you are using a sound card which is Ad Lib compatible, you may not hear sound at all during the Sound Device Test. Some Ad Lib compatible and other base-level sound cards only send and receive sounds on MIDI channels 11-16. EasyKeys by default transmits instrument sounds on MIDI channels 2-10. To account for this, you will need to [create a custom MIDI setup](#) for your sound card using the MIDI Mapper.

Once the Sound Device Test has cycled through all available sound resources on your system, it gives you an opportunity to continue the test, starting again with the first available sound device. If you do not hear sound coming from a device while it is being tested, you may not have its necessary driver(s) installed. Sound devices require the installation of a device driver before they can be used. If you do not have any sound card/MIDI device drivers installed on your system, EasyKeys notifies you of this, and does not initiate testing. Consult your sound device's documentation for information on its necessary drivers.

Once you complete the Sound Device Test, the [Drum Channel Test](#) is then executed.

Driver Name

The Driver Name corresponds to the sound device currently being tested.

Device Info

Device Info displays the technical specifications of the sound device currently being tested.

Yes Button

Click on the Yes button if you hear sound coming from the device currently being tested.

No Button

Click on the No button if you do not hear sound coming from the device being tested, or wish to audition other sound resources available.

Cancel Button

Click on the Cancel button to exit from Auto Configure without making changes to EasyKeys' default settings.

Help Button

Click on the Help button to obtain Help on the Sound Device Test.

Drum Channel Test

Click inside this picture to learn more about the Drum Channel Test dialog:



The Drum Channel Test, performed second in Auto Configure, insures that the MIDI channel used by EasyKeys for its drum player is assigned correctly to the percussive channel on your sound device. Incorrectly mapped drums result in odd-sounding playback, because drum notes are resultingly played using melodic instruments, instead.

Drums are usually received on MIDI channel 10 or 16. The Drum Channel Test first attempts to play drums using MIDI channel 10.

Note: By default, EasyKeys assigns the drum player to MIDI channel 10. Channel 10 is the standard drum channel for devices complying with the General MIDI standard. The General MIDI standard specifies a universal set of instrument assignments for all compliant sound cards and MIDI instruments. This is to insure that the music will always sound correct from system to system.

If you hear drums, answer Yes. EasyKeys records this information and uses this setting by default for all EasyKeys sessions thereafter. You can change this setting at any time by running Auto Configure again, or change your settings directly by opening the [Easy Keys Setup dialog box](#).

If you do not hear sound when asked, or if you wish to select a different drum channel, answer No. Answering No initiates testing using MIDI channel 16 for drums.

Note: Although MIDI channel 16 is not considered to be a standard drum channel according to General MIDI, many Windows 3.1 compatible sound cards use it for drums instead of channel 10.

If you answer No for both drum channel options, the Drum Channel test gives you the opportunity to continue, starting again with MIDI channel 10. If you do not hear drums coming from any of the available options, you most likely are using a sound device which is not General MIDI compatible, and will need to create a custom setup for it using the Windows MIDI Mapper. Consult your Windows documentation for more information on MIDI setups.

Drum Channel

The Drum Channel corresponds to the drum configuration currently being tested.

Yes Button

Click on the Yes button if you hear drums playing using the current drum channel selection.

No Button

Click on the No button if you do not hear drums playing using the current drum channel selection.

Cancel Button

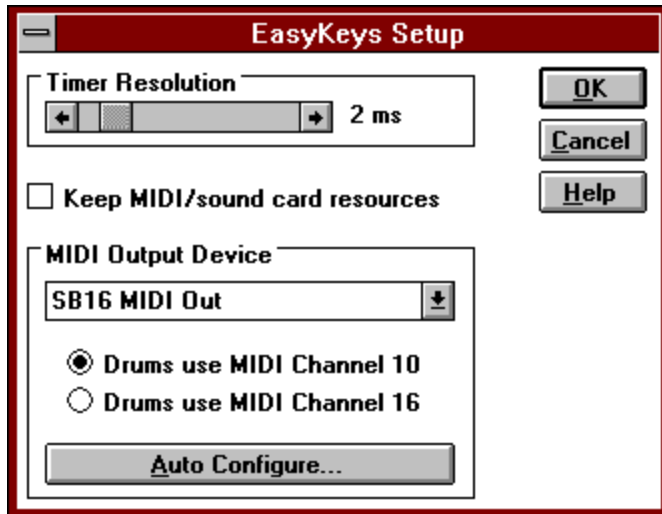
Click on the Cancel button to exit Auto Configure without making changes to EasyKeys' default settings.

Help Button

Click on the Help button to obtain Help on the Drum Channel Test.

EasyKeys Setup Dialog

Click inside this picture to learn more about the EasyKeys Setup dialog:



Timer Resolution Scroll Bar

The Timer Resolution scroll bar can help give the music a smoother "feel" on computers experiencing erratic timing problems. The timing resolution ranges from 1 to 10 milliseconds.

Higher resolution does not always result in better timing. In fact, on higher speed 486 machines, 1ms resolution is significantly worse than 2ms! The optimal resolutions typically range from 2 to 5ms.

The higher the resolution (the lower the number,) the more work your computer has to do.

Keep Resources Check Box

Check the Keep Resources check box if you would like EasyKeys to keep control of your MIDI and sound card resources, preventing other applications from taking control of them. When the option to Keep Resources is checked, EasyKeys continues to play music when another application is activated. Otherwise, EasyKeys stops playing music.

Drum Channel Radio Buttons

Click on any of the Drum Channel Radio Buttons to choose the default drum channel configuration for all EasyKeys performances.

OK Button

Click on the OK button to initiate the changes you've made.

Cancel Button

Click on the Cancel button to cancel the operation and close this dialog box.

Help Button

Click on the Help button to open this help window.

MIDI Output Device

Click inside the MIDI Output Device Combo Box to select the driver for your sound card or MIDI instrument.

Auto Configure... Button

Click on the Auto Configure... button to let EasyKeys help you properly set up your sound card or MIDI instrument. The [Auto Configure](#) option takes you step by step through a series of tests which insure that EasyKeys is playing properly through your sound device.

Creating a MIDI Setup For Ad Lib Compatible Sound Cards

EasyKeys is configured for compatibility with the General MIDI standard. In order to accommodate a variety of sound setups, EasyKeys may use the Windows MIDI Mapper to address your sound card or MIDI interface. The MIDI Mapper basically acts as a mediator between EasyKeys and your sound device. If you are using an Ad Lib compatible or other base-level sound card which does not support MIDI channels 1-10, you will need to create a custom MIDI setup for use with EasyKeys. Take the following steps:

1. Open up the Control Panel by double-clicking on the Control Panel icon located in the Main program group in Windows.
2. Open up the MIDI Mapper by double-clicking on the MIDI Mapper icon in the Control Panel. (If you do not see a MIDI Mapper icon, you probably don't have the necessary driver(s) for your sound card installed on your system. Refer to your Windows documentation for instructions how to work with device drivers.)
3. Inside the MIDI Mapper dialog box, click on the New... button.
4. Inside the New MIDI Setup dialog box, name the setup "EasyKeys Setup" and give it a short description, if you like. Click on OK.
5. Inside the MIDI Setup dialog box, go to the Port Name column and select your sound card's driver for all 16 boxes. (Clicking in each of the boxes opens up a list of available output choices.) This will direct all of EasyKeys' selected instruments to your sound card. (If you do not see your sound card's driver listed in the available output choices, you probably don't have the necessary driver(s) installed on your system. Refer to your Windows documentation)
6. In the Dest Chan column, change channels 2-6 to 11-15, respectively. Also change Dest Chan 10 to 16. This correctly maps EasyKeys' instruments to accommodate your sound card.
7. When you have finished, click OK and save the new setup when prompted to. In the MIDI Mapper dialog box, you will see the new setup listed in the "Name:" combo box.
8. Close the MIDI Mapper and try running EasyKeys.

