

First Edition (January 1998)


This manual is published by Ericsson Mobile Communications AB, without any warranty. Improvements and changes to this manual due to typographical errors, inaccuracies of current information, or improvements to programs and/or equipment, may be made by Ericsson Mobile Communications AB, at any time and without notice. Such changes will, however, be incorporated into new editions of this manual.

All rights reserved

© **Ericsson Mobile Communications AB, 1997**

Publication number: LZT XXX XXX XXX

Printed in Sweden

The  symbol on our products signifies that they have been certified according to the EMC directive 89/336/EEC, the Telecommunications directive 91/263/EEC, and the Low Voltage directive 73/23/EEC when applicable. The products fulfil the requirements according to the following standards:

Cellular Phones and Accessories in Combination:

ETS 300 342-1 EMC for European digital cellular telecommunications.

Accessories Without Direct Connection to a Cellular Phone:

EN 50081 Electromagnetic compatibility, Generic Emission Standard, and EN 50082 Electromagnetic compatibility, Generic Immunity Standard.



Infrared Data
Associationsm

Class 1 LED Product

Table of Contents

Introduction	7
Kit Contents	7
Additional Possibilities	7
Before You Start	8
Important Notice!	8
Installation Flowchart when Using Windows 95 9	
1. Check Infrared Support	10
2. Install Infrared Support	10
3. Install Infrared Modem	11
Using the Infrared Modem	13
Removing the Modem	13
The Mobile Office Suite	14
The Phone Book Manager	14
The Message Manager	14
Install Mobile Office Suite	15
Windows CE	15
IBM Internet	16
Internet Application Kit	16
Manuals	16
Read User's Guide	16
Install User's Guide	17
Read Reference Manual	17
Install Reference Manual	17
Troubleshooter	17
Read the Troubleshooter	17
Install the Troubleshooter	17
Installation Diskettes	17
Create Diskettes	17
Warranty and Support	18

Introduction

The DI 27 package consists of an infrared modem, which allows you to connect your Ericsson phone to a computer via an infrared link, and an application called Mobile Office Suite. With the Mobile Office Suite you can organise the phone book in your mobile phone as well as sending and receiving SMS messages. For more information see chapter *The Mobile Office Suite*.

The infrared modem can be used with both Windows 95 and Windows CE. The Mobile Office Suite can only be used with Windows 95.

Kit Contents

When buying the DI 27 package you receive:

- An infrared modem (Ericsson DI 27)
- A CD containing Infrared Support for Windows 95 Version 2.0, modem script, Mobile Office Suite, manuals and an Internet application.
- This User's Guide

Additional Possibilities

Besides organising your phone book and handling SMS messages, you can send and receive fax and e-mail messages, browse the Internet and much more.

Note that to be able to use various communication services you also need the appropriate software applications. For example, a fax application, an e-mail application and an Internet browser.

Before You Start

For you to be able to use the services mentioned in *Additional Possibilities*, most phone network operators require that you have separate fax and data subscriptions. Please contact your operator to make sure you have the necessary subscriptions.

If your computer does not have a CD drive you need to extract diskettes before starting the installation procedure. See p. 16 for more information on how to do this.

Important Notice!

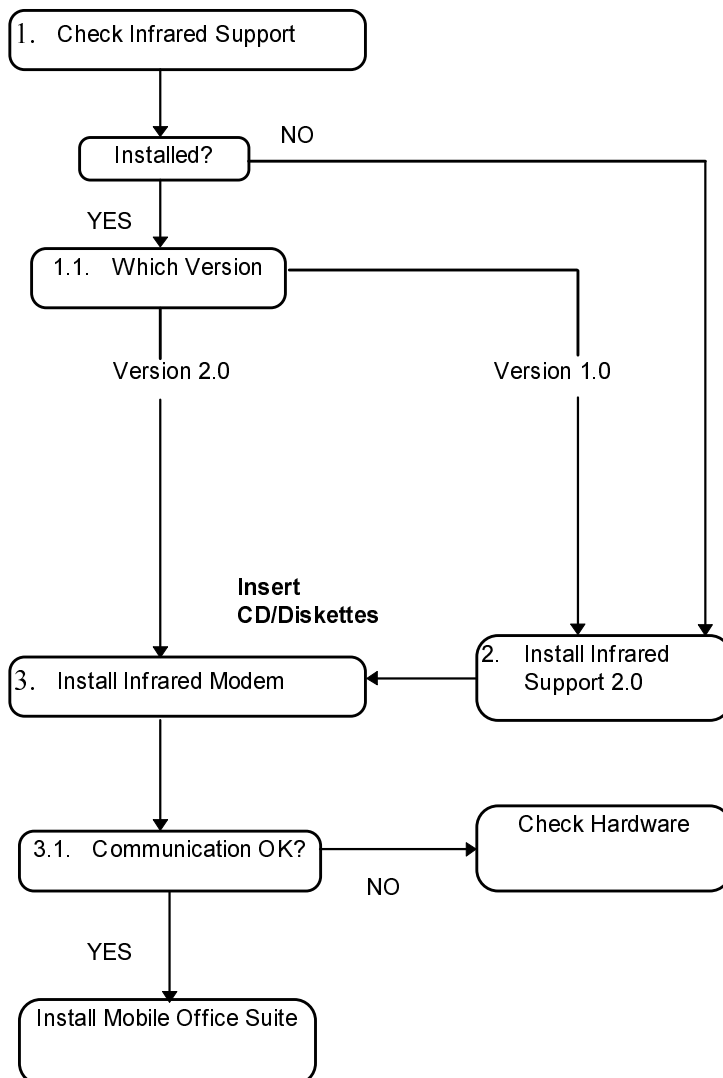
The installation process of the DI 27 infrared modem requires knowledge of how to use Windows 95.

The examples in this manual may differ from your PC. If you require more information during the installation process than provided by this User's Guide, we recommend that you consult your PC supplier, computer's manuals and/or the Troubleshooter for the DI 27.

Installation Flowchart when Using Windows 95

We recommend that you use step 1 - 4 in the flowchart below as a checklist in order to assure that your computer has been configured properly for a successful installation of the infrared modem.

The boxes in the flowchart applies to sections with corresponding titles in this User's Guide.



1. Check Infrared Support

Before installing the infrared modem you also need to check if the **Microsoft Infrared Support for Windows Version 2.0** has been installed.

To do this, and also to check the version of the existing infrared support on your computer, do the following:

1. Under **Settings** in the **Start** menu, select **Control Panel**.
2. Select the **Add/Remove Programs** applet.
3. Check the version of the **Microsoft Infrared Support for Windows Version 2.0** in the list under the **Install/Uninstall** tab.

1.1 Which Version?

Version 2.0

- If you have version 2.0 installed you do not need to install the infrared support. Go to 3. *Install Infrared Modem* to continue the installation of the infrared modem.

No Infrared Support Installed or Version 1.0

- Go to 2. *Install Infrared Support* to continue the installation of the infrared modem.

2. Install Infrared Support

1. Insert the CD into your computer's CD drive or the **Infrared Communication Software** diskette into the diskette drive.

If you are using a diskette or if your CD does not start automatically, select **Run** in the **Start** menu. Type `A:\setup` if you are using diskettes or `D:\setup` (could be other drive) if you are using a CD. Click **OK**. If you are using diskettes continue to step 3.

2. When the **Setup** dialogue appears on the screen click on the **Install Infrared Support for Your PC** button.
3. Follow the instructions given on the screen

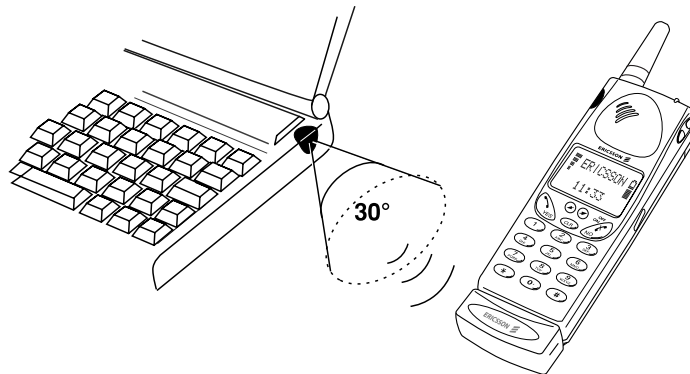
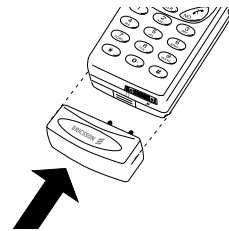
4. When the **Add Infrared Device Wizard** appears, select the **Built-in infrared port on laptop or desktop** under **Standard Infrared Devices** and click **Next**.
5. Select the COM port enabled for infrared communication and click **Next**.
6. Accept the default settings by clicking **Next**.


After the installation you will return to the **Setup** dialogue.

Note! We recommend that you restart your computer before continuing the installation of the infrared modem.

3. Install Infrared Modem

1. Insert the CD into your computer's CD drive or insert the **Infrared Communication Software** diskette into the diskette drive.
2. Attach the infrared modem to the phone as illustrated. You may have to push hard.
3. Place the phone with the infrared modem next to your PC. See illustration. (The infrared port may be positioned differently on your computer.)



4. Close the **Control Panel** if it is open. Open the **Control Panel**. (This is to update the Control Panel window.)
5. Double click on the **Infrared** applet.
Select the **Options** tab and make sure that the check box **Enable infrared communication on:** is ticked. 
6. Click on the **Status** tab. The message **One infrared device is in range** should be displayed.
Your computer will now discover the new hardware.

Note! If you are installing from the CD your infrared modem is now **installed** and you can continue to the section *after* step **11**. If you are installing using diskettes continue to step **7**.

7. The **Add modem** dialogue will appear. Click **Next**.
8. Select **Have Disk**. Select the drive for the modem script.
A if you are using diskettes or **D** (could be other drive) if you are using the CD.
9. Select **Browse**. Open the **Modem** folder and select the modem script: Eridi27.inf. Select **OK**.
10. Select **OK**. A dialogue appears on the screen confirming that you have selected the Ericsson DI27 modem. Click **Next**. Your infrared modem will now be installed.
11. The Wizard will now inform you that the modem has been installed successfully. Click **Finish**.

To check that the infrared modem has been installed, go to **Control Panel** and select **Modems**. **Ericsson DI27** should appear in the list under the **General** tab.

You can now continue with the installation of the Ericsson Mobile Office Suite, p. 15.

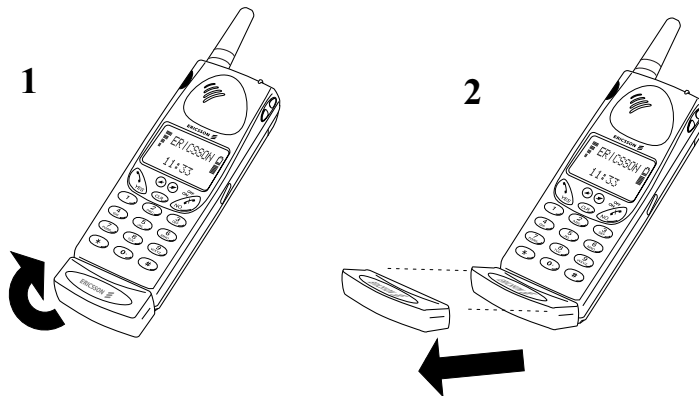
Note! If the infrared modem has not been installed successfully see *Troubleshooter*.

Using the Infrared Modem

1. Attach the infrared modem to your Ericsson mobile phone.
2. Turn on the phone if it is not already turned on.
3. Double click on the **Infrared** applet in the **Control Panel** to activate the modem if it is not activated automatically by the application you are using with your infrared modem.
4. Place the phone *within* one meter from the computers infrared port. It should be placed quite close in order to get the best result.

Removing the Modem

- Remove the infrared modem from your mobile phone by pushing it upwards (1) and pulling it out (2) at the same time. See illustration.



The Mobile Office Suite

Mobile Office Suite consists of a Phone Book Manager and a Message Manager. Once installed on your computer, the application allows you to easily organise the names and telephone numbers that you store in your mobile phone. It also allows you to send and receive SMS messages on your computer.

Note! An SMS message can only be sent to a mobile phone which supports this service.

This service is network dependant. Check with your operator to find out if they support this service and if it is included in your subscription.

For instructions on how to use the Mobile Office Suite refer to the applications's help texts

The Phone Book Manager

The Phone Book Manager makes it possible to organize names and telephone numbers in the mobile phone's phone book and synchronize the mobile phone's phone book with the address book stored on the computer.

The Message Manager

The Message Manager makes it possible to send, receive and organise SMS messages on your computer. SMS, or the Short Messages Service, is a service that allows you to send and receive short text messages (up to 160 characters). This is very useful if, for example, the person you want to contact has turned his/her phone off. Just send your SMS message and the receiver will be notified that a message has been received the next time he/she turns the mobile phone on.

Install Mobile Office Suite

1. Insert the CD into your computer's CD drive or insert the **Ericsson Mobile Office Suite** diskette 1 into the disk drive if you have extracted diskettes.

If you are using a diskette or if your CD does not start automatically, select **Run** in the **Start** menu. Type A:\setup if you are using diskettes or D:\setup (could be other drive) if you are using a CD. Click **OK**. If you are using diskettes continue to step 3.

2. When the **Setup** dialogue appears on the screen click on the **Install Mobile Office Suite** button.
3. Follow the instructions as they appear on the screen.

Note! You may not have to use all diskettes depending on which language version you have selected.

Using the Mobile Office Suite

To run the Mobile Office Suite application:

- Under **Programs** in the **Start** menu, select the Ericsson Mobile Office Suite or click the shortcut created on your desktop.

Windows CE

This section describes the installation process for Windows CE.

1. Make sure that you have HPC Explorer installed on your PC. Also make sure that communication between your HPC and your PC is established.
2. Insert the CD into your PC's CD drive or insert the Microsoft IrDA diskette into the diskette drive.
3. Installing from CD:
When the Setup dialogue appears on the screen, click the **Install Infrared Modem for Windows CE** button.

Installing from diskette:

Select **Run** in the **Start** menu. Click **Browse** and locate the Windows CE folder on your diskette drive. In the Windows CE folder, double click **Install**.

The infrared modem will be installed automatically on your H/PC.

4. Reset your HPC. (Usually this is done by pressing a reset button placed in the backup battery compartment.)

If you installed from the CD, you will return to the **Setup** dialogue where you can continue the installations.

IBM Internet

Internet Application Kit

The IBM Internet Application Kit is a complete Internet kit containing a Netscape browser, an international Dialler application and a registration application.

With IBM Internet, you can access the Internet through a local number from over 1000 locations all over the world.

For more information on IBM Internet, please run the presentation on the CD.

Manuals

There are two types of manuals. This User's Guide and a Reference manual for the more advanced user. The manuals are only compatible to Windows 95.

Read User's Guide

Click this button if you want to read the User's Guide.

Install User's Guide

Click this button if you want to install the User's Guide.

Read Reference Manual

Click this button if you want to read the reference manual

Install Reference Manual

Click this button if you want to install the Reference manual

Troubleshooter

The Troubleshooter contains information to help you solve any problems that may occur when you are installing the infrared modem.

Read the Troubleshooter

Click this button if you want to read the Troubleshooter.

Install the Troubleshooter

Click this button if you want to install the Troubleshooter.

Installation Diskettes

You need six diskettes to create installation diskettes from the CD. The infrared support, modem script and the Mobile Office Suite will be copied to the diskettes.

Create Diskettes

1. Insert the CD into your computer's CD drive.
If your CD does not start automatically, select **Run** in the

Start menu. Type D:\setup (could be other drive) if you are using a CD.

2. When the **Setup** dialogue appears on the screen, click the **Create Diskettes** button.
3. Follow the instructions as they appear on the screen.

Warranty and Support

Mobile Internet

When you are on the move and in need of communication and information, Mobile Internet is the answer.

Mobile Internet is a service supplied by Ericsson to facilitate easy communication and rapid information retrieval, wherever you are. It gives you access to online customer services, online user guides and useful information when you are travelling. It allows you to download various communication software which will ensure that you achieve optimum results from your Ericsson products.

If you run into any problem, there are help texts connected to the different Mobile Internet pages.

The Internet address to Mobile Internet is:

<http://mobile.ericsson.com/mobileinternet>

To get access to the service you also need a user ID and a password. The first time you log on, please use the following:

User ID: **mobile**

Password: **internet**

You must change user ID and password the first time you log on the Mobile Internet.

Software Warranty

Support