

AVI interactive video application v3.11

AVliva v3.11 by RKA Productions © 1998

AVliva is a shareware product. As such, you can evaluate this program for free. If you like it and want to support its further development, please register your copy. Click on "How to Pay for AVliva" below for more information.

This program is a fully functional program that does not quit working after a certain period of time. I am relying entirely on the integrity of you, the users, to pay for its use. Thanks for trying out my software.

[Program Instructions](#)

[Keyboard and Status Bar Shortcuts](#)

[Information About the Format of a .AVliva Settings File](#)

[AVliva Features History](#)

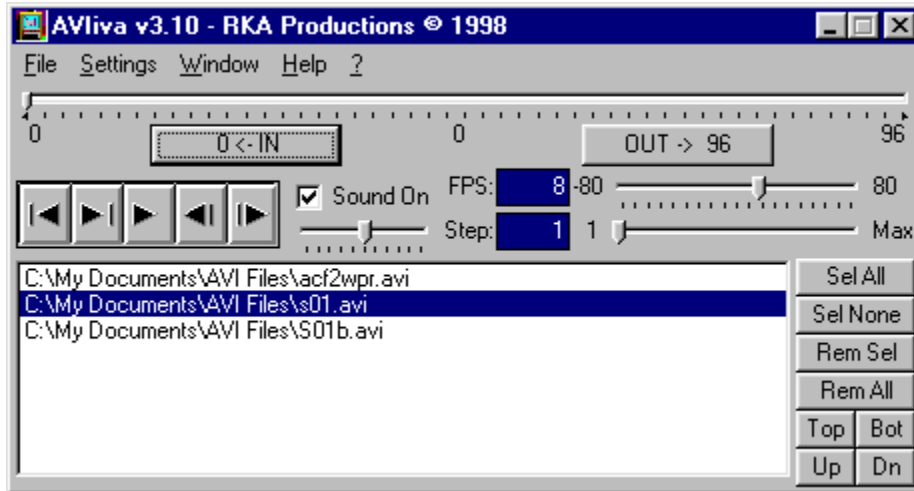
[How to Pay for AVliva](#)

[Troubleshooting](#)

AVliva Program Instructions

Click on the menus in the image below for help.

Use pop-up help on the actual program interface for help on the controls.



Starting the Program

AVliva can be started several ways:

1. By double-clicking on the program icon or selecting the program from the Start / Programs menu on the task bar.
2. By dragging one or more video file icons over top of the program icon. Note that when you do this, the path and filenames will have the shortened DOS values.
3. If you have associated the AVI extension with AVliva, you can simply double-click on a video file icon. If more than one file is selected during double-clicking, then a separate copy of AVliva will start for each file.

To associate AVliva with the AVI extension, open Windows Explorer, choose the View/Options menu, then the File Types tab. If the AVI type is already on the list, select it for editing, if not then create a New Type. Create a Play action if not already there and then edit it. Click on the Browse button and navigate to the AVliva executable and select it. The path and name of AVliva will be entered into the Application used to perform action field. Edit this field by adding a space and "%1" to the end of the field. Press OK and then the Change Icon button. Select the AVliva icon if there or press Browse to look for the AVliva program again. Select the program and its icon will appear for selection. Press OK, then Close, then Close again to finalize changes.

4. If you have previously saved a settings file (see below), it will have a .AVliva extension. By associating the .AVliva extension with the AVliva program, you can double-click on the settings file icon, and AVliva will load and in turn load the settings file.

You can associate the .AVliva extension the same way as described above for the .AVI extension. However, do not add the space and "%1" to the action field. If you put a /h at the end of the program path and filename in the action field (make sure they are outside any quotation marks), then

the control panel will hide itself upon loading the AVliva settings file. If you put a /p at the end of the program path and filename in the action field (again, outside quotation marks), then any files selected for playback in the AVliva settings file will automatically start playing. You can put both a /h and a /p to hide the control panel and start playing the video files. In this case the action field may look something like this:

```
"C:\Program Files\AVliva\AVliva.exe" /h /p
```

IMPORTANT: Make sure there are no spaces after the /p.

NOTE: You cannot open an AVliva settings file by dragging it to the AVliva program icon. This is due to Windows using only the old DOS 8.3 naming convention when dragging files. AVliva checks for a .AVliva extension, but will not find it in the DOS version of the filename.

Using the Program

Once the program is loaded, you will see the interface shown above. I will not discuss how to use the controls here. You can obtain pop-up help in the program proper by first clicking on the ? in the menu bar and then clicking on a control.

To learn about the menu items, click on a menu item in the above picture.

Below I discuss various general topics related to AVliva's use.

Adding Videos to the File List

AVliva can only play AVI files.

Video files can be added to the file list as mentioned in the "Starting the Program" section above. If you started AVliva by double-clicking its icon, then it will load with no video files in its file list.

To add files to an empty list or add additional files to an existing list, select Add Files... from the File menu. A file dialog box will appear allowing you to select multiple files. Upon clicking the OK button, all the selected files will be added to the file list.

Alternatively, files can be dragged from Windows Explorer to the file list box. This includes video files as well as .AVliva settings files.

Using and Manipulating the File List

When a file is selected from the list by clicking, it will load and the first frame will be displayed. (If more than one file is selected in the list, only the top-most selected file is displayed.)

Once a video file is open, it can be navigated using the controls and menus on the program's interface. You can move to any frame using the slider, jump to the start or end frames, step forwards or backwards, play in reverse, play full screen, loop, sequence selected files, turn sound on or off, adjust the volume, etc.

To play several videos in sequence, select all the videos to be played from the file list, make sure the Settings / Sequence Files menu item is checked, and press the play button. If the Settings / Loop Files menu item is checked, the sequence will repeat after all the selected videos have been played.

While a video file is open, its frame rate, step size, seek mode, IN frame, OUT frame, sound mode, volume, window size, and aspect ratio setting can be adjusted. Once adjusted, this information will

remain with the file even if it is moved on the list. Also, this information will be stored in a saved settings file. This allows you to create a custom presentation that can be recreated easily at a later time.

If you would like to see what the current settings are for each file in the list, select Show File Settings from the Windows menu. Another window will open and display the information in a table. This information cannot be edited from this window.

[Information about the format of a .AVliva settings file](#)

Manipulating the Video Control Window

With the addition of the file list box and list manipulation buttons, the AVliva window has become quite big. Although you can make the control window disappear (see next section), sometimes you might want it visible, but smaller. By double-clicking in a blank area of the window (where no controls are located), the bottom part of the window, containing the list box and buttons, will collapse. Double-clicking again will make it full size again. This feature can also be activated using the Full Size Control Panel menu item on the Window menu.

Manipulating the Video Display Window

A video file is originally displayed inside a window. However, if you check the Settings / Show Full Screen menu item, the video will appear full screen (using the screen's current resolution) with no borders.

The windowed display can be resized by dragging the sides or corners of the window. When the window is resized, one of two things will happen. If the Settings / Constant Aspect Ratio (width:height ratio) menu item is not checked, then the video image will be stretched to fill the window. If the menu item is checked, then the video image will be made as large as possible while still maintaining the aspect ratio of the video. The aspect ratio option also affects the way the video is displayed in full screen mode.

When you click on a video image, the control panel window will disappear. This makes it easy to get it out of the way if it is covering the video image. To make the control panel appear again, click once more on the video image.

For a windowed video display, double-clicking on the video image will resize the window to its original size.

The close button on the windowed video display is active. You can close the video by clicking on it. You will be asked to verify your actions.

Video Display Window Keyboard and Status Bar

When the video display window (just the windowed display, not the full screen display) has the focus, key strokes can be used to manipulate all aspects of playing back videos. For a complete list of these keyboard commands, see the [Keyboard and Status Bar Shortcuts help window](#).

In order to help you remember what the current settings are, a status bar appears at the bottom of the windowed AVI display. It contains panels that each display a particular setting. For instance, the first panel displays "Seek" if playback is currently set to seek mode or "^Seek" if not in seek mode. Several of the other settings are also on-off type settings. The ^ symbol always means that the setting is currently off. Other settings, like the frame rate, step size, in frame, and out frame

actually show a number such as "FR=15" if the frame rate is currently 15.

Any of the settings shown in the status bar can be changed by clicking on the appropriate panel. See the [Keyboard and Status Bar Shortcuts help window](#) for details.

Forward Playback

If you are playing a video normally with a step rate of one, then frames may be skipped in an attempt to maintain the designated frame rate. If it is more important to see each frame of the video than to maintain the selected frame rate, then make sure the Settings / Seek Play menu item is selected. Using seek play, each frame will be displayed even if the frame rate cannot be maintained. When the step rate is greater than one, Seek Play mode will automatically be selected since regular play mode is not available in this case.

Reverse Playback

When playing a video backwards (Reverse Play checked) in regular mode (Seek Play not checked), then only keyframes will be displayed. Thus, if every fifth frame is a keyframe, then only every fifth frame will be displayed. In order to see all frames, select Seek Play mode. With this setting, you may notice the video flashing. This is what happens when some of the frames in the video are not keyframes. Typically, a video file will only have keyframes, which contain the complete information about the frame, ever so many frames (usually every 5-10 frames). All of the frames between these keyframes only store information about the differences from the previous frame. Thus, when playing or stepping in reverse to a non-keyframe, the image has to be rebuilt from the previous keyframe, which means you will see several frames quickly rebuild causing the flashing. If it is important that the video play smoothly in reverse, save the video such that every frame is a keyframe. This will make the video file quite a bit larger, but it will be much smoother playing backwards. Be aware, however, that the larger file will not play as fast forwards. As usual, there are tradeoffs and you must decide what is most important to you for a particular video.

Closing the Program

To close AVIviva, select Exit from the File menu or click on the close button (the button in the upper-right-hand corner of the window with an X in it). You will be asked to verify your actions.

Format of a Settings File

Here is a sample settings file. It has changed from versions of AVliva earlier than v3.00 and is no longer compatible with the older versions. However, you can probably modify existing .AVliva files with an editor after looking at the changes to this file below.

[FILES]

```
C:\MyVideos\S01b.avi,8,1,False,0,96,True,500,9600,7200,True,False  
C:\MyVideos\s01.avi,-/8,1,False,10,77,False,500,9600,7200,True,True  
C:\MyVideos\acf2wpr.avi,NONE,0,False,0,0,True,700,0,0,False,False
```

[SETTINGS]

```
Sequence=True  
Loop=True  
FullScreen=False  
ConstantSettings=False  
ConstantDisplay=False  
ControlTop=4605  
ControlLeft=5025  
ControlHeight=3690  
ControlState=0  
ControlVisible=True  
DisplayTop=30  
DisplayLeft=0  
DisplayState=0
```

The [FILES] section contains the list of files in the file list box with some additional comma delimited information. Each line contains the following information:

filename, frame rate, step size, seek mode (true or false), IN frame, OUT frame, sound (true or false), volume (0-1000), window width (in twips, 15 twips/pixels), window height (in twips), constant aspect ratio (True or False), selected (True = file is selected, False = file is not selected)

Some of the settings may be zero. This is okay. Some settings can only be filled in when the file is opened for the first time. Thus, when you see settings that are zero for a file, you know that that file was never opened before the settings file was saved.

The [SETTINGS] section contains information about the settings of all the other controls and menus on the AVliva interface. Since the name of the control appears in the list itself, these items are self-explanatory. The items that appear in this list are dependent upon several factors such as: 1) whether or not there are any files in the file list, 2) whether any files are selected in the list, and 3) whether or not the Use Constant Settings or the Use Constant Display menu items are checked.

Keyboard and Status Bar Shortcuts for AVIva

When the video window (either small or full screen) has the focus (e.g.- is the active window), keyboard commands can be used to control all aspects of playing videos. In order to help you keep up with what the current settings are, a status bar at the bottom of the AVI window (not available on the full screen display for obvious reasons) shows 11 of the current settings.

Below is a concise compilation of the keyboard commands. Also, the status bar can be used to change settings by clicking on the appropriate panels. The way to do this also appears below.

Start and Pause Playback of Video

Space Bar (toggles)

Step Forward or Backwards through Video

Right Arrow or Left Arrow keys

Go to Beginning or End of Video

Home or End keys

Go to Previous or Next Video

Up Arrow or Down Arrow keys

Goes to previous or next file in the file list whether it is selected or not.

Turn Sound On and Off and Change Volume

Shift-V, Ctrl-V, and V keys

Shift-V toggles sound on and off. Ctrl-V increases volume, V decreases volume.

Reset, Increase, or Decrease Frame Rate

Shift-F, Ctrl-F, and F keys

Shift-F resets the frame rate of the video to its original value. Ctrl-F increases the frame rate, F decreases the frame rate. (Alternatively: Shift-Click, Ctrl-Click, or Click the panel on the AVI window status bar that contains "FR=".)

Reset, Increase, or Decrease Step Size

Shift-S, Ctrl-S, and S keys

Shift-S resets the step size of the video to one. Ctrl-S increases the step rate, S decreases the step rate. (Alternatively: Shift-Click, Ctrl-Click, or Click the panel on the AVI window status bar that contains "SS=".)

Set or Reset IN Frame

I and Shift-I keys

I sets the IN frame to the current frame. Shift-I resets the IN frame to zero. (Alternatively: Click or Shift-Click the panel on the AVI window status bar that contains "IN=".)

Set or Reset OUT Frame

O and Shift-O keys

O sets the OUT frame to the current frame. Shift-O resets the OUT frame to the last frame in the video. (Alternatively: Click or Shift-Click the panel on the AVI window status bar that contains "OUT=".)

Turn Seek Mode On or Off

K key (toggles)

(Alternatively: Click the panel on the AVI window status bar that contains "Seek".)

Turn Reverse Play Mode On or Off

R key (toggles)

(Alternatively: Click the panel on the AVI window status bar that contains "Rev".)

Turn Sequencing Mode On or Off

Q key (toggles)

(Alternatively: Click the panel on the AVI window status bar that contains "Seq".)

Turn Looping Mode On or Off

L key (toggles)

(Alternatively: Click the panel on the AVI window status bar that contains "Loop".)

Turn Full Screen Mode On or Off

W key (toggles)

Turn Constant Aspect Ratio Mode On or Off

A key (toggles)

(Alternatively: Click the panel on the AVI window status bar that contains "AR".)

Turn Constant Settings Mode On or Off

T key (toggles)

(Alternatively: Click the panel on the AVI window status bar that contains "CSet".)

Turn Constant Display Mode On or Off

D key (*toggles*)

(Alternatively: Click the panel on the AVI window status bar that contains "CDisp".)

Save Settings File As...

F10

This is useful is you want to save the settings file with the control window either minimized or hidden.

AVIva Features History

Changes to v3.11

- A status bar now appears at the bottom of the AVI window (but not the full screen display) that contains 11 panels. Each panel indicates the state of a particular setting. The settings can be changed by clicking on the appropriate panel.
- Corrected a problem with the IN frame and OUT frame being assigned incorrectly under certain circumstances when running under Windows 95 with Internet Explorer 4.0 installed.
- Corrected a problem when reading video files with an embedded frame rate of less than 1 fps.

Changes to v3.10

- All aspects of video playback can now be controlled via the keyboard while the video window itself has the focus. This allows playback to be controlled without the control panel having to be visible at all.
- The position, size, state, and visibility of the control window and video window are now saved in .AVIva settings files. This allows the user to reposition these windows to a suitable location for the presentation and then have them automatically reappear that way when a settings file is loaded.
- A Remove All button was added to the control window. This allows all the files in the file list to be removed quickly without having to select all of them first.

Changes to v3.00

- Can now handle a longer list of files when adding multiple files from the Add Files menu item.
- Moved most of the settings from check boxes in the program window to the Settings menu on the menu bar.
- Added a slider for changing the frame rate of a video. Rates vary from -80 to 80 frames per second. (Actual speeds depend on complexity of the video and the speed of the computer.) Near the center of the frame rate slider, fractional rates are available. Thus, /4 means 1/4 frame per second or rather 4 seconds per frame. Fractional rates vary from 2 to 11 seconds per frame in either forward or reverse direction.
- Added a slider for changing the step size of a video. Sizes vary from 1 to the number of frames in the video.
- The text boxes displaying the frame rate and step size can no longer be edited directly, but various keys can be used to raise and lower their values just as you can with the sliders.
- OLE drag and drop can now be used to add files to the file list by dragging them from Windows Explorer to the file list box. Settings files can also be dropped in the file list box.
- The custom settings currently associated with the files in the list can now be viewed in table form by selecting the Window / Show File Settings menu item.
- Individual files can be selected for reverse play mode such that some files play forward and other play backwards (as opposed to all files playing in the same direction). Because of this, the files always play from the top down (as opposed to playing from the bottom up in reverse mode in previous versions of AVIva).
- Additional settings can be specified for each individual file such as sound on/off, volume, and window size. These settings are saved in the settings file.
- Due to changes mentioned above, the settings files for version 3.00 of AVIva are incompatible with earlier versions of AVIva. Sorry about this. I tried to maintain compatibility but there were just too many changes necessary.

- When a .AVliva settings file is loaded, the files are now appended to the file list. In earlier versions, loading a settings file caused all files in the file list to be removed first.
- Fixed a few bugs with the Up, Down, Top, and Bottom buttons.

Changes to v2.11

- Added the ability to hide the control panel when loading an AVliva settings file by double-clicking the file in Explorer.
- Added the ability to automatically start playing videos when loading an AVliva settings file by double-clicking the file in Explorer.
- Corrected a minor bug with loading the help file.

Changes to v2.10

- There was a problem when starting AVliva by double-clicking a video file or dragging video files over top of its icon. Both problems were corrected.

Changes to v2.00 Release

- The control panel can be minimized without the video window going away. If you click inside the video window, the control panel will be unminimized just like it is made visible if hidden.
- If the control panel is hidden or minimized, it will no longer reappear when one video finishes and the next one in sequence begins to play.

Changes to v2.00 Beta 2

- More than one video file can be selected. The names of these files are added to a list. The order of the files can be adjusted. By highlighting files in the list, they can be played in sequence.
- There is an option for playing all files using the current playback settings regardless of the settings in the files themselves.
- There is an option for playing all files using the current display settings regardless of the settings in the files themselves.
- The playback settings for each file in the list can be changed. These changes will be remembered as the files are reordered and played.
- The file list and the settings for each file can be saved to and then retrieved at a later time. This is a great aid when you want to set up a presentation.
- Seek play mode can now be selected even when the step rate is one. This mode ensures that all frames in the file will be shown even if the selected frame rate cannot be maintained. (With regular play mode, frames may be skipped to maintain the selected frame rate.)
- Videos can be played backwards in regular mode. The disadvantage of this mode is that only keyframes are displayed. Thus, if every fifth frame is a keyframe, then only every fifth frame will be displayed.
- The volume of video files containing sound can be adjusted using a slider control.
- A menu bar was added because the additional features of v2.00 was making for a cluttered interface. However, adding the menu bar allowed for some hidden features of the program to be explicitly available.
- The pop-up help button was eliminated and replaced with a pop-up help menu item that appears as a question mark in the menu bar.
- The pause and stop buttons were eliminated from the VCR control panel. When the play button is pressed to start playing a video, it turns into a pause button. When the pause button is pressed to stop playing a video, it turns back into a play button.

- The check boxes now have verbose labels so it is easier to determine what they do.

AVliva v3.11 Payment Instructions

AVI interactive video application is a product of RKA Productions and was written by Randy Finch. Here is contact information:

Randy Finch
RKA Productions
122 West Oak Hill Dr.
Florence, AL 35633-1013
Email: rcfinch@hiwaay.net
HomePage: <http://fly.hiwaay.net/~rcfinch>

Send comments and suggestions to my Email address.

AVliva v3.11 is a free upgrade to all registered users of earlier versions of AVliva. To become a registered user, print this form and send it in with your payment. If you give me your Email address, I will let you know when updates to the program are available.

Alternatively, you can register AVliva with a credit card via secure Web transaction using Register Now! Go to my web site (listed above) and follow the link to my PC Programs page. There will be a button that links you to the registration site.

YES, I want to help support the author of AVliva and encourage him to continue updating it. I have enclosed my \$20 (or more) shareware fee. Please send only cash, check, or money order when registering by mail.

If you are a registered user of a previous version of AVliva, this upgrade is free.

NAME: _____

ADDRESS: _____

CITY, STATE, ZIP: _____

EMAIL: _____

Troubleshooting

The VCR Panel Flashes When Playing in Reverse and the Video Cannot Be Stopped

- When a video file is playing backwards in regular mode (not seek mode), only the key frames are shown. If you have a video file with only a very few key frames (this usually occurs with very short videos) and looping is turned on, it could be that the file is shifting between playing and stopping so fast that the VCR panel will flash and the program cannot be stopped. You can try pressing CTRL-Break many times in succession. If this does not work, you will probably have to press CTRL-ALT-DEL, click on AVIiva in the task list, and then press the End Task button. This will force AVIiva to stop. Make a mental note not to play this file again in this way. It should play okay if looping is off or seek play mode is on.

An Error Occurs When Loading an AVIiva Settings File

- You cannot load an AVIiva settings file by dragging it to the AVIiva program icon because Windows converts path and filenames to their DOS 8.3 equivalents when using this method. Therefore, the filename will no longer have a .AVIiva extension.
- Make sure there are no spaces at the end of the action line for the file type association. For more information, see the [Program Instructions](#).

Video Stops Playing Unexpectedly

- If video playback stops at the end of the last selected video in the list and you are expecting it to loop back to the first video in the list, check to make sure the Settings / Loop Files menu item is checked. You may think this simplistic, but there have been many times during testing AVIiva that I forgot to turn on looping and then was at a loss as to why the video playback stopped.
- Due to some timing issues that take place when one video ends and another begins, you might experience what seems to be a program hangup, but really isn't. One video ends, but the next one in sequence does not start. However, the pause button never turns back to a play button. This prevents you from starting the playback again. The fastest way to correct this is to unselect all the files in the file list and then reselect the ones you want to play. The play button will then reappear and playback can proceed. I made a change to the program that seems to have corrected this problem, but I wanted you to be aware of it.
- I had one user report that when playing a sequence of very large video files (~70 MB each), the program would stop in the middle of a random file at a random place after about 25 minutes. I have not been able to duplicate this problem using any files I have up to about 30 MB.

AVIiva Won't Play My Video File

- If the file is not an AVI file or it is a corrupted AVI file, it cannot be played. Also, you must have the right codec (compression / decompression) files installed to decompress the AVI file. Most people have the RLE, Microsoft Video, Indeo, and Cinepak codecs on their system. However, any codec can be used within an AVI file. If you try to play a video for which you do not have the right codec, a message something like this appears: "mmsystem006: There is no driver installed on your system." The only way to solve this is to find out what codec was used and install it. A way to get a clue is to right click on the AVI file in Windows Explorer, select Properties, then the Details tab. The last piece of information about the Video format is usually the compression type.

The Control Panel Won't Come Back

- Sometimes when videos are being played in full screen mode and the control panel is not visible, you can click on the video window and the control panel will not reappear. Usually clicking a

second time will make it reappear.

The Color Palette for the Video is Incorrect

- When running AVliva with a 256-color display, the video's color palette can sometimes get messed up when another program has the focus. When this happens, a simple click in the video display window should restore the proper palette. However, I have run into many weird situations when working with palettes, so this may not work on your system. If so, try playing the video to see if it will clear up. As a last resort, the video may have to be opened again.

What Happened to the Help File?

- If you load files from a directory other than the AVliva installation directory before using pop-up help, the program may have difficulty finding the help file. When this happens, you will be given an option to find the help file yourself. Just point to the help file in the installation directory. You should not have any further problems.

Where's the Pop-up Help?

- Pop-up help will not work on a control that is ghosted.
- In the past, there was a problem with some versions of mfc40.dll that caused the pop-up help for sliders and the MCI control to not work. I have not run into this problem with newer versions of this file. The version that was distributed with this software works fine. However, if you have problems with these pop-up help items, you probably have a version of mfc40.dll that does not work. However, you might not want to overwrite a newer version with the one distributed with AVliva because it may cause other programs to quit working properly. You can determine the version of a system file by going to the Windows\System directory in Windows Explorer, right clicking the file of interest, and choosing Properties from the pop-up menu. Click on the Version tab to see the file version.

Sound Check Box

This check box is used to turn on the sound in the video file. When this box is checked, sound will be played. When this box is unchecked, sound will not be played.

Mouse:

Click in the box or on label to toggle the check box.

Keyboard:

When the check box has the focus, press the space bar to toggle the check box.

Bottom Button

Pressing this button causes all the selected files in the adjacent File List Box to be moved to the bottom of the list, maintaining their original order.

Mouse:

Click on the button.

Keyboard:

When the button has the focus, press the spacebar.

Down Button

Pressing this button causes all the selected files in the adjacent File List Box to be moved down one position in the list.

Mouse:

Click on the button.

Keyboard:

When the button has the focus, press the spacebar.

Frame IN Set Button

This button is used to set and reset the IN (or start) frame for the video file. The number on the button reflects the current IN frame (initially zero). A small left-pointing triangular tick mark also appears on the slider above at the appropriate location.

Mouse:

Click on the button to make the current frame the IN frame (if the current frame is less than the OUT frame). Shift-click to reset the IN frame to zero.

Keyboard:

When the button has the focus, press the spacebar to make the current frame the IN frame (if the current frame is less than the OUT frame). Press shift-space to reset the IN frame to zero.

Frame OUT Set Button

This button is used to set and reset the OUT (or end) frame for the video file. The number on the button reflects the current OUT frame (initially the last frame of the video). A small right-pointing triangular tick mark also appears on the slider above at the appropriate location.

Mouse:

Click on the button to make the current frame the OUT frame (if the current frame is greater than the IN frame). Shift-click to reset the OUT frame to the last frame of the video.

Keyboard:

When the button has the focus, press the spacebar to make the current frame the OUT frame (if the current frame is greater than the IN frame). Press shift-space to reset the OUT frame to the last frame of the video.

Remove Button

Pressing this button causes all the selected files in the adjacent File List Box to be removed from the list.

Mouse:

Click on the button.

Keyboard:

When the button has the focus, press the spacebar.

Select All Button

Pressing this button causes all the files in the adjacent File List Box to be selected. The top-most file will become the current file.

Mouse:

Click on the button.

Keyboard:

When the button has the focus, press the spacebar.

Select None Button

Pressing this button causes all the files in the adjacent File List Box to be unselected and the current file will be closed.

Mouse:

Click on the button.

Keyboard:

When the button has the focus, press the spacebar.

Top Button

Pressing this button causes all the selected files in the adjacent File List Box to be moved to the top of the list, maintaining their original order.

Mouse:

Click on the button.

Keyboard:

When the button has the focus, press the spacebar.

Up Button

Pressing this button causes all the selected files in the adjacent File List Box to be moved up one position in the list.

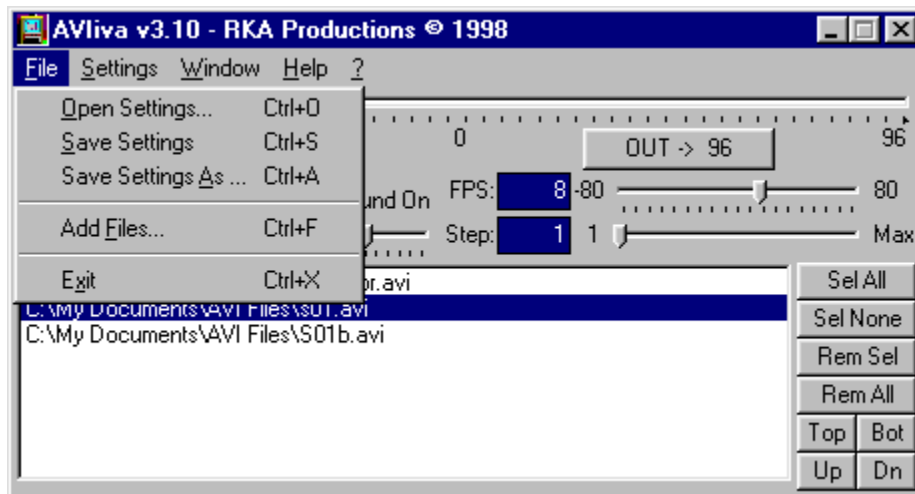
Mouse:

Click on the button.

Keyboard:

When the button has the focus, press the spacebar.

File Menu



Open Settings Menu

When this menu item is selected, a File Open Dialog Box will appear. From there, a single file with a .AVliva extension can be selected. (A file of this type can be saved by selecting the Save Settings As menu.) By clicking on the OK button, the selected file will be opened and the settings will be applied to the program, replacing the current settings. Any filenames in the settings file will be appended to the existing file list. If you associate the .AVliva extension with the AVliva program, you can simply double click a .AVliva file and AVliva will run and in turn load the settings file. (NOTE: A .AVliva file cannot be dragged to the AVliva program icon or a shortcut since drag and drop does not currently support long filenames.)

Mouse:

Click "File" on the menu bar and then select "Open Settings...".

Keyboard:

Press Ctrl-O or Press Alt-F for the File menu and then "O".

Save Settings Menu

When this menu item is selected, the current settings will be saved to a .AVliva file using the same name as the last loaded or saved settings file. If no .AVliva file has been opened or saved, a File Save Dialog Box will appear, allowing you to enter a name. See the Save Settings As menu for more details.

Mouse:

Click "File" on the menu bar and then select "Save Settings".

Keyboard:

Press Ctrl-S or Press Alt-F for the File menu and then "S".

Save Settings As Menu

When this menu item is selected, a File Save Dialog Box will appear, allowing you to enter a filename for saving the current settings. The default extension for this file is .AVIiva. This file will contain the names of all the files in the File List Box, which ones are selected, their frame and step rates, etc. (See the main help text for more details.) If no files are in the list, only the current settings will be saved. A .AVIiva file can be retrieved using the Load Settings menu item.

Mouse:

Click "File" on the menu bar and then select "Save Settings As...".

Keyboard:

Press Ctrl-A or Press Alt-F for the File menu and then "A".

Add Files Menu

When this menu item is selected, a File Open Dialog Box will appear. From there, multiple video files can be selected. By clicking on the OK button, the selected files will be added to the File List Box. (NOTE: Video files can also be added to the list by dragging the videos' icons over top of the AVIiva program icon or a shortcut to it. Also, video files can be dragged from the Windows Explorer window to the File List Box.)

Mouse:

Click "File" on the menu bar and then select "Add Files...".

Keyboard:

Press Alt-F for the File menu and then "F".

Exit Menu

When this menu item is selected, you will be prompted as to whether or not you really want to exit the program. If you respond with a Yes, the program will terminate. Otherwise, the program will continue.

Mouse:

Click "File" on the menu bar and then select "Exit". Alternatively, click on the Close button (X) in the title bar.

Keyboard:

Press Ctrl-X or Press Alt-F for the File menu and then "X".

Help Menu



Instructions and Ordering Menu

Selecting this menu item opens the help window and displays the Contents page of the program's help file.

Mouse:

Click "Help" on the menu bar and then select "Instructions and Ordering...".

Keyboard:

Press F1 or press Alt-H for the Help menu and then "I".

About AVliva Menu

When this menu item is selected, a small window with information about the program will be displayed. This window has a button that allows a help file to be displayed containing more information about running the program and sending in moola to help the author along in his programming endeavors.

Mouse:

Click "Help" on the menu bar and then select "About AVliva...".

Keyboard:

Press Alt-H for the Help menu and then "A".

Current Frame Label

This label always contains the current frame number for the movie. It will update while moving to a new frame by moving the slider above or pressing certain "VCR" buttons below.

Note: When playing a movie, this label may not be updated every frame change. How often it updates depends on the complexity of the movie and the speed of your computer.

Last Frame Label

This label always contains the last frame number for the movie. It will update when a new video file is loaded.

Start Frame Label

This label shows the start frame number of the movie. This number will always be zero.

File List Box

This list box contains all the files to be potentially played. The box can be populated by choosing the File / Add Files menu item and then selecting multiple files from the dialog box. The selected files will be added to the current list of files. Alternatively, an AVIiva file can be opened by selecting the File / Open Settings menu item. Also, video files or settings files can be dragged from Windows Explorer to the File List Box. If only one file is selected, it will be the currently open file. If more than one file is selected, the top-most file in the list will be opened.

Mouse:

Click on a file to make it the currently opened file. Click-drag or click/shift-click to select multiple sequential filenames. Ctrl-click-drag to deselect multiple sequential filenames. Ctrl-click to select or deselect multiple non-sequential files.

Keyboard:

When the list box has the focus, use the up or down arrow keys to open the file above or below the current file. Use Page Up and Page Down to move through the list one page at a time. Use the Home or End keys to open the first or last file in the list. Using the Shift key in combination with these keys will select multiple files.

"VCR" Control Panel



Start Button: Used to reset the video to the current IN frame as specified by the Frame IN Set Button.



End Button: Used to reset the video to the current OUT frame as specified by the Frame OUT Set Button.



Play Button: Used to play the video. If the Reverse Play menu item is checked, it will play backwards. For step rates greater than one, the video will skip that number of frames as it plays. This button becomes a pause button while a file is playing.



Pause Button: Used to pause the video while it is playing. This button becomes a play button after pausing a video.



StepBack Button: Used to step backwards in the video by the current step rate (see the Step Entry Field).



StepForward Button: Used to step forwards in the video by the current step rate (see the Step Entry Field).

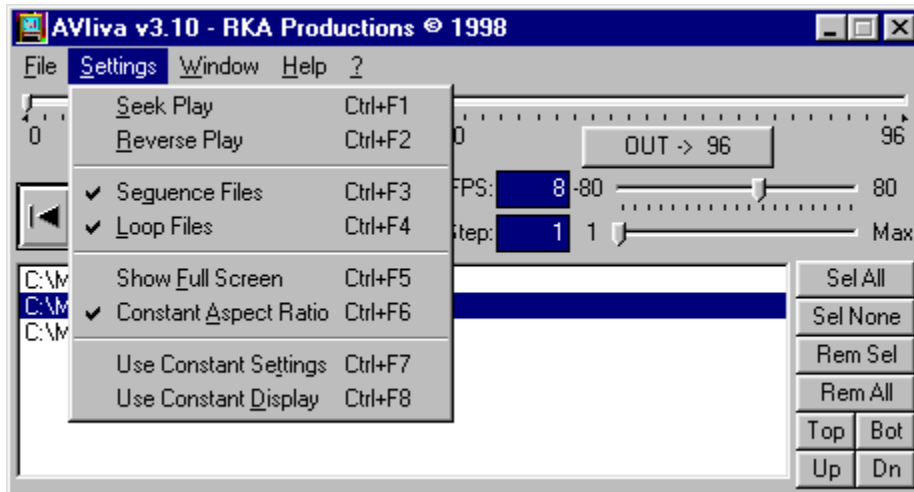
Mouse:

Click on the appropriate button to carry out the actions described above.

Keyboard:

When the Control Panel has the focus, the left and right arrow keys will move the focus to the button on the left or right. Press the space bar to activate the button with the focus.

Settings Menu



Seek Play Menu

When this menu item is checked, the video will be played by seeking each frame rather than by just playing it normally. The file will be played as close to the selected frame rate as possible, but given that this method is slower, it may not be able to attain it. If the step rate is greater than one, this menu item is automatically checked because a video cannot be played normally while stepping over frames. The advantage of Seek Play is that no frames will be skipped, whereas in normal play mode (Seek Play not checked), frames may be skipped to maintain the chosen frame rate. Please note that when playing a video backwards in normal mode, only the keyframes will be shown. This is fine for video files where every frame is a keyframe. However, if you need to view intermediate frames between keyframes in other files, Seek Play must be used.

Mouse:

Click "Settings" on the menu bar and then select "Seek Play".

Keyboard:

Press Ctrl-F1 or Press Alt-S for the Settings menu and then "S".

Reverse Play Menu

When this menu item is checked, the video will be played backwards. Otherwise, it will be played forwards. When this menu item is selected, the frame rate in the FPS text box is negated to reflect the change in direction. The frame rate slider knob position is also adjusted.

Mouse:

Click "Settings" on the menu bar and then select "Reverse Play".

Keyboard:

Press Ctrl-F2 or Press Alt-S for the Settings menu and then "R".

Sequence Files Menu

When this menu item is checked, all the selected files in the File List Box will be played in sequence. Otherwise, only the current file will be played.

Mouse:

Click "Settings" on the menu bar and then select "Sequence Files".

Keyboard:

Press Ctrl-F3 or Press Alt-S for the Settings menu and then "Q".

Loop Files Menu

When this menu item is checked, the selected video will continue to play over and over until the Pause Button is pressed. If the video is playing forwards, it will jump back to the IN frame and repeat when it reaches the OUT frame. If the video is playing backwards, it will jump back to the OUT frame and repeat when it reaches the IN frame. If more than one file is selected and sequential playback mode is selected, then all the selected files will play before repeating.

Mouse:

Click "Settings" on the menu bar and then select "Loop Files".

Keyboard:

Press Ctrl-F4 or Press Alt-S for the Settings menu and then "L".

Show Full Screen Menu

When this box is checked, the video will be scaled to fill the screen with no border. Otherwise, it will appear inside a window.

Mouse:

Click "Settings" on the menu bar and then select "Show Full Screen".

Keyboard:

Press Ctrl-F5 or Press Alt-S for the Settings menu and then "F".

Constant Aspect Ratio Menu

When this menu item is checked, the video will maintain its width:height ratio, stored in the file, regardless of how the display window is resized. The video will also maintain the same aspect ratio when playing in full screen mode. If this box is unchecked, the video will be stretched to fill the window or the full screen.

Mouse:

Click "Settings" on the menu bar and then select "Constant Aspect Ratio".

Keyboard:

Press Ctrl-F6 or Press Alt-S for the Settings menu and then "A".

Use Constant Settings Menu

When this menu item is checked, the frame rate, step size, sound, volume, and seek mode will stay the same from one video to the next during Sequential playback regardless of the file settings.

Mouse:

Click "Settings" on the menu bar and then select "Use Constant Settings".

Keyboard:

Press Ctrl-F7 or Press Alt-S for the Settings menu and then "T".

Use Constant Display Menu

When this box is checked, the display size and aspect ratio setting will stay the same from one video to the next during Sequential playback regardless of the file settings. Otherwise, each file will be sized according to its stored size (except when in Full Screen mode).

Mouse:

Click "Settings" on the menu bar and then select "Use Constant Display".

Keyboard:

Press Ctrl-F8 or Press Alt-S for the Settings menu and then "D".

Frame Rate Slider

This slider is used to adjust the video frame rate from -80 (reverse play) and 80 (forward play) frames per second (fps). Near the midpoint, the frame rate becomes fractional. A $1/4$ indicates a frame rate of $1/4$ fps or 4 seconds per frame (spf). A video's initial frame rate is stored in the video file. If the frame rate is set to zero, the video will stop. However, if the slider is moved without shifting focus to another control, the video will start playing again without pressing the play button. When playing the video with a step rate of one when seek play mode is off, frames may be skipped to maintain the chosen frame rate. If the video is played with a step size greater than one or seek mode is on, no frames are skipped. If the video is complex or your computer is slow, the video may not play at the specified frame rate.

Mouse:

Click on the slider knob and drag to change the frame rate. Clicking to the left or right of the knob changes the frame rate by 10 units (10 fps or 10 spf, depending on knob location).

Keyboard:

When the slider has the focus, the up and down arrow keys change the frame rate by one unit (1 fps or 1 spf). The Page Up and Page Down keys change the frame rate by 10 units. The Home and End keys set the frame rate to -80 or 80 fps. The Shift-Space key combination resets the frame rate to its original value.

Frame Slider

This slider is used to move through the frames of a movie file. The slider handle also moves as the movie is being played or stepped through using the "VCR" buttons below.

Mouse:

Click on the slider handle and slide it left or right while still depressing the button. The movie will be positioned accordingly. Clicking to the left or right of the handle will step backwards or forwards about 1/20 of the length of the movie.

Keyboard:

When the slider has the focus, the left and right arrow keys will step backwards and forwards one frame at a time. Page-Up and Page-Down will step backwards and forwards about 1/20 of the length of the movie. Home and End will move to the current IN and OUT frames, respectively.

Step Size Slider

This slider is used to set a step rate, in frames, for the video. It can range in value from 1 to the number of frames in the video. When playing the video, it will jump the specified number of frames as it plays. The StepBack and StepForward buttons will move backwards and forwards by the specified number of frames. Setting the step rate to something other than one will automatically cause the Seek Play menu item to become checked.

Mouse:

Click on the slider knob and drag to change the step size. Clicking to the left or right of the knob will change the step size by about 5% of the number of frames in the video. Holding the Shift key down while clicking within on the boundary of the slider control will reset the step size to one.

Keyboard:

When the slider has the focus, the up and down arrow keys can be used to decrement or increment the step size by one. The Page Up and Page Down keys can be used to decrement or increment the step size by about 5% of the total frames in the video. The Home and End keys can be used to set the size to 1 or the number of frames in the video. The Shift-Space key combination will reset the step size to one.

Volume Slider

This slider is used to change the volume. It only works if the Sound check box is checked.

Mouse:

Click on the slider handle and slide it left or right while still depressing the button. The volume will be set accordingly. Clicking to the left or right of the handle will decrease or increase the volume setting by 1/10 of the entire scale.

Keyboard:

When the slider has the focus, the left and right arrow keys will decrease or increase the volume in very small increments. Page-Up and Page-Down will decrease or increase the volume setting by 1/10 of the entire scale. Home and End will set the volume to zero and maximum, respectively.

Frame Rate Field

This field is used for displaying and changing the video frame rate in frames per second (fps). It can range in value from -80 (reverse play) to 80 (forward play). A slash indicates fractional frame rates. Thus, /4 indicates 1/4 fps or 4 seconds per frame (spf). The initial frame rate is stored in the video file. If the frame rate is set to zero, the video will stop. However, pressing a key without shifting focus to another control allows the video to start playing again without pressing the play button. When playing the video with a step rate of one when seek play mode is off, frames may be skipped to maintain the chosen frame rate. If the step size is greater than one or seek play mode is on, no frames are skipped. If the video is complex or your computer is slow, the video may not play at the specified frame rate.

Mouse:

The mouse can only be used to set the focus on the Frame Rate Field. If you want to use the mouse, use the Frame Rate Slider. Shift-clicking within the field will reset the frame rate to its original value.

Keyboard:

When the field has the focus, the up and down arrow keys change the frame rate by one unit (1 fps or 1 spf). The Page Up and Page Down keys change it by 10 units. The Home and End keys set the frame rate to -80 or 80 fps. The Shift-Space key combination resets the frame rate to its original value.

Step Size Field

This field is used for displaying and changing the step size, in frames, for the video. It can range in value from 1 to the number of frames in the video. When playing the video, it will jump the specified number of frames as it plays. The StepBack and StepForward buttons will move backwards and forwards by the specified number of frames. Setting the step rate to something other than one will automatically cause the Seek Play menu item to become checked.

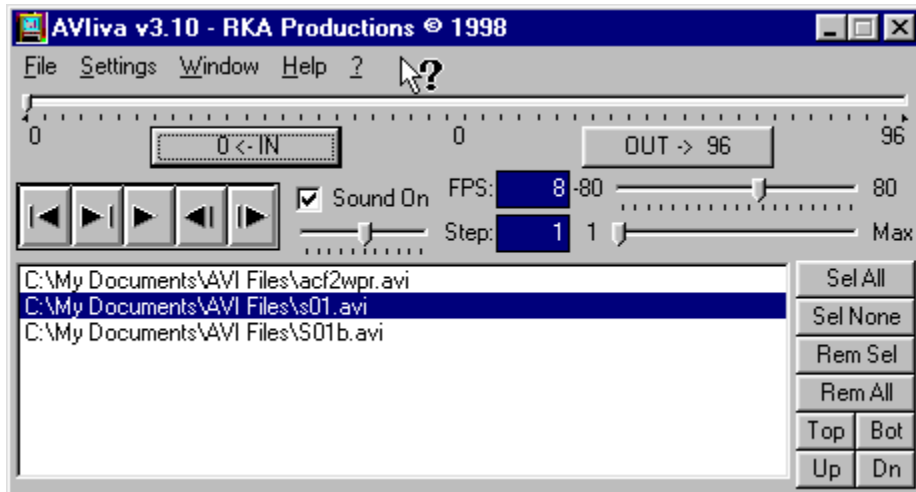
Mouse:

The mouse can only be used to set the focus on the Step Size Field. If you want to adjust the step size using the mouse, use the Step Size Slider. Holding the Shift key down while clicking within the field will reset the step size to one.

Keyboard:

When the field has the focus, the up and down arrow keys can be used to decrement or increment the step size by one. The Page Up and Page Down keys can be used to decrement or increment the step size by about 5% of the total frames in the video. The Home and End keys can be used to set the size to 1 or the number of frames in the video. The Shift-Space key combination will reset the step size to one.

Whats This Help (?) Menu



Whats This Help (?) Menu

Selecting this menu item turns on pop-up help mode. The pointer will change into a combination arrow and question mark. Move the pointer over the control you want help for and then click again. A pop-up window will appear with information about what the control does and how to use it. To make the pop-up window go away, click within its boundaries. (NOTE: Help cannot be obtained on a control that is ghosted.)

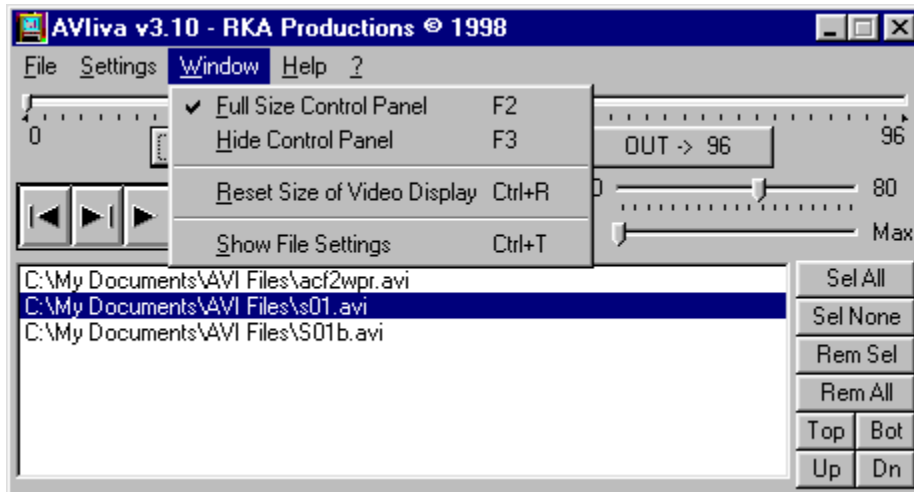
Mouse:

Click "?" on the menu bar to activate help mode. Next, click on the control you want help with.

Keyboard:

Press Alt-? and then use the mouse to click on the control you want help with.

Window Menu



Full Size Control Panel Menu

Selecting this menu item toggles the size of the control panel window. When the item is checked, the entire control panel is shown. When this item is unchecked, only the top half of the panel is shown. The file list and the file manipulation buttons to its right will not be shown.

Mouse:

Click "Window" on the menu bar and then select "Full Size Control Panel". Alternatively, double-click within the control panel window anywhere there is not an interface control.

Keyboard:

Press F2 or Press Alt-W for the Window menu and then "F".

Hide Control Panel Menu

Selecting this menu item hides the control panel window. This can only be done when a video window is open. The same effect can be had by simply clicking on an open video window. Clicking on the video window while the control panel is hidden causes it to reappear.

Mouse:

Click "Window" on the menu bar and then select "Hide Control Panel". Alternatively, click within a video display window.

Keyboard:

Press F3 or Press Alt-W for the Window menu and then "H".

Reset Size of Video Display Menu

Selecting this menu item resizes the windowed video display to the actual size of the currently open file. This can also be accomplished by double-clicking within the video window itself. (NOTE: This item has no effect on a full screen display.)

Mouse:

Click "Window" on the menu bar and then select "Reset Size of Video Display". Alternatively, double-click within a video display window.

Keyboard:

Press Ctrl-R or Press Alt-W for the Window menu and then "R".

Show File Settings Menu

Selecting this menu item opens another window that shows all the current file settings as they would be saved to a settings file. The data is displayed in spreadsheet format.

Mouse:

Click "Window" on the menu bar and then select "Show File Settings".

Keyboard:

Press Ctrl-T or Press Alt-W for the Window menu and then "S".

How to Order

<Order>

Keyboard and Status Bar Shortcuts help window

<Keyboard>

Mouse:
<Contents>

Program Instructions

<Instructions>

