

# NOTES For SynchroBrain™ Multimedia Product

## 1.SynchroBrain™ Multimedia Product System Requirements

- \* 386/33+ with Windows 3.1
- \* Double Speed CD-ROM driver
- \* 4MB RAM
- \* SVGA(640x480 256 colors)

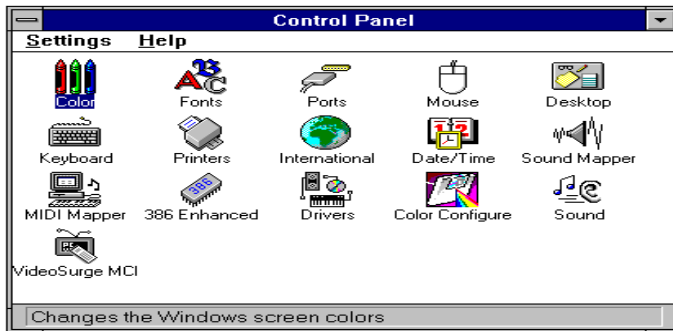
## 2. About MCI CDAudio driver

(a) Make sure the audio cable of your CD-ROM drive has plugged into your sound card.

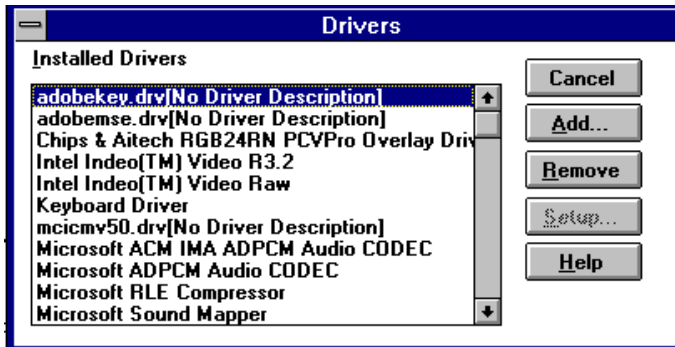
(b) You need MCI CDAudio driver for listening SBM product's CDAudio.

Make sure this driver has been installed in your Windows, if it is not, you can install it following these procedures:

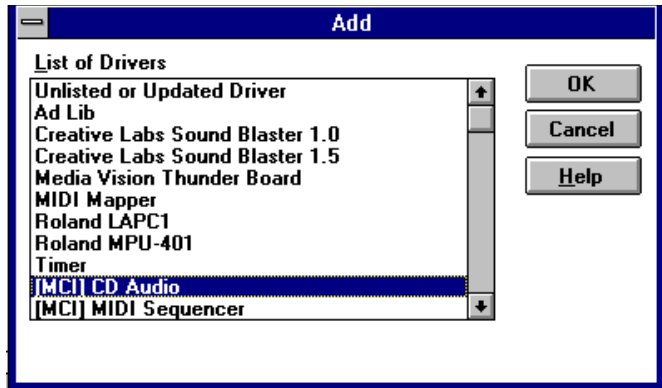
(1)Open Control Panel in Program Manager.



(2)Double click Drivers in Control Panel to open Drivers Window.



(3)Click Add Button to open Add Window.



(4) Select [MCI] CD Audio and click OK button add this driver to your Drivers. Windows may ask you to insert a Windows installation disk to load this driver. When [MCI]CD Audio driver has been loaded and your CD-ROM driver has been installed properly, a pop-up window will display a message which will tell you a CD-ROM driver has been detected.

### 3. About your video driver

For correct color display, please check your video driver. SBM products need a 256 color display. According to the type of your VGA card, you can run Windows Setup to select a interrelated driver which will display SBM product properly.

### 4. Warring

***Do not listen to the music while driving or operating heavy machinery. A few of the image programs on this disc, such as "Dazzle" and "Acidwarp", are shareware, public domain, or freeware. You are free to try each program for a limited time. Some of files require separate payment to the author for continue use the programs. Please check individual files. By purchasing this disc, you are not necessarily purchasing registration or the rights to use the programs. In order to obtain these rights, you must register with the developer listed in the individual program.***