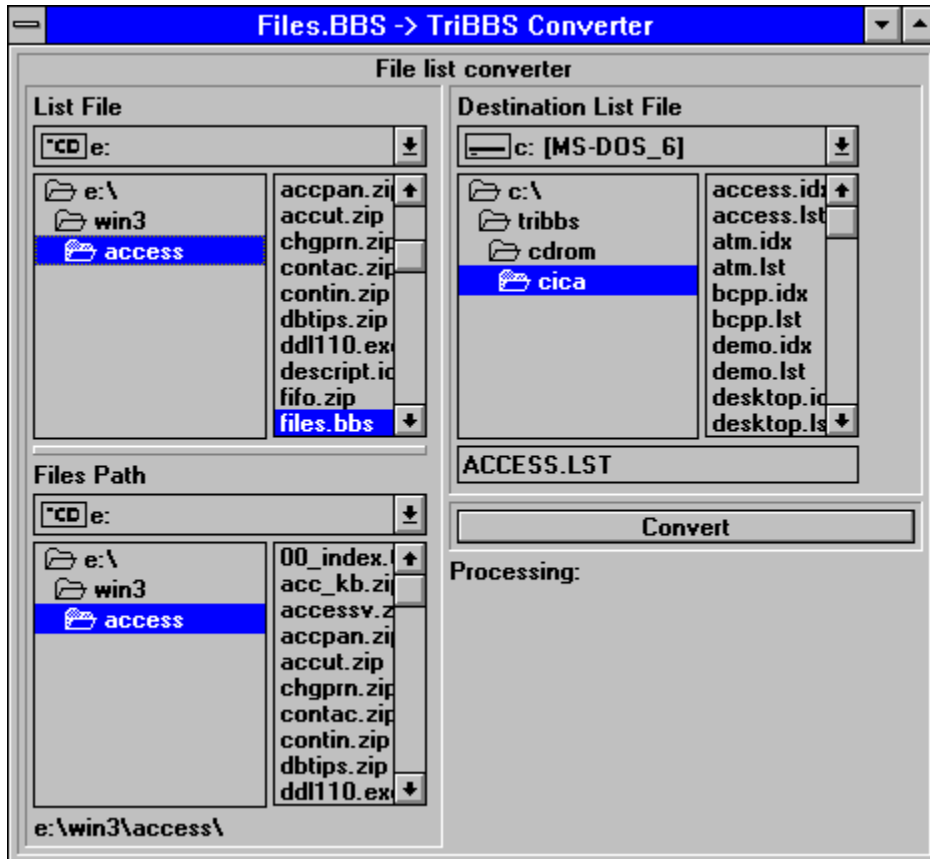


WTriCon.EXE

The Files.BBS converter for TRIBBS

The use of WTriCon is quite simple. First the main (only) screen:



First, the "List File" section is used to specify where the Files.BBS is located on the Compact Disk. The "Files Path" section is used to specify where the files of that section are. They are usually in the same path as the "List File" section so it is automatically adjusted. Then the "Destination List File" section is used to specify the outputted file list's path and name. Then press CONVERT and presto!