

# Lost & Found v1.0

Brought to you by

## GTE Interactive Media

Welcome! In this file you will find detailed information on installation and performance. This document assumes that you are familiar with the Windows™ operating system. The enclosed pictures are visual aids and should be similar to the actual windows found on your computer. If you have a printer, this document can be printed and used for easy reference.

### Minimum System Requirements:

486SX 25Mhz 4MB RAM (**See the section on Virtual Memory!**)  
CD-ROM 150k transfer rate  
VGA 256 colors  
Windows 3.1  
Mouse

### Suggested System Requirements:

486SX 33Mhz 8MB RAM  
CD-ROM 300k transfer rate  
VGA 256 colors  
Windows 3.1  
Mouse

### Sound/Audio Card Compatibility:

Please check to make sure you have an audio card. This game will not play sound without one. If you have an audio card, but you still don't have sound, consult the audio card manual to configure for Windows.

### Computer systems and their components vary widely:

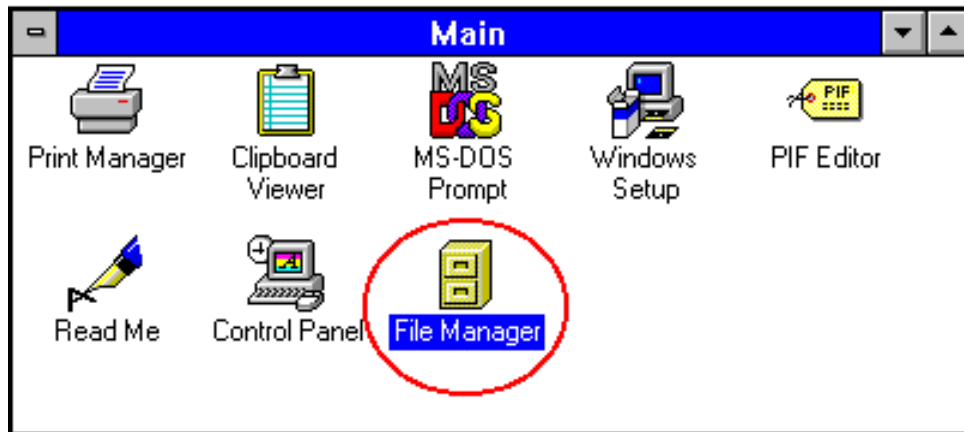
Sound cards, such as the Soundblaster series or the Windows Sound System, are a significantly variable system component. Another variable is the driver software for these sound cards. The software on this disk has been tested to be compatible with many types of properly installed and configured sound cards which are **MPC2 compliant**.

**\*\* SOUND BLASTER OWNERS: Read the section 'Determining if your sound card drivers need updating:' \*\***

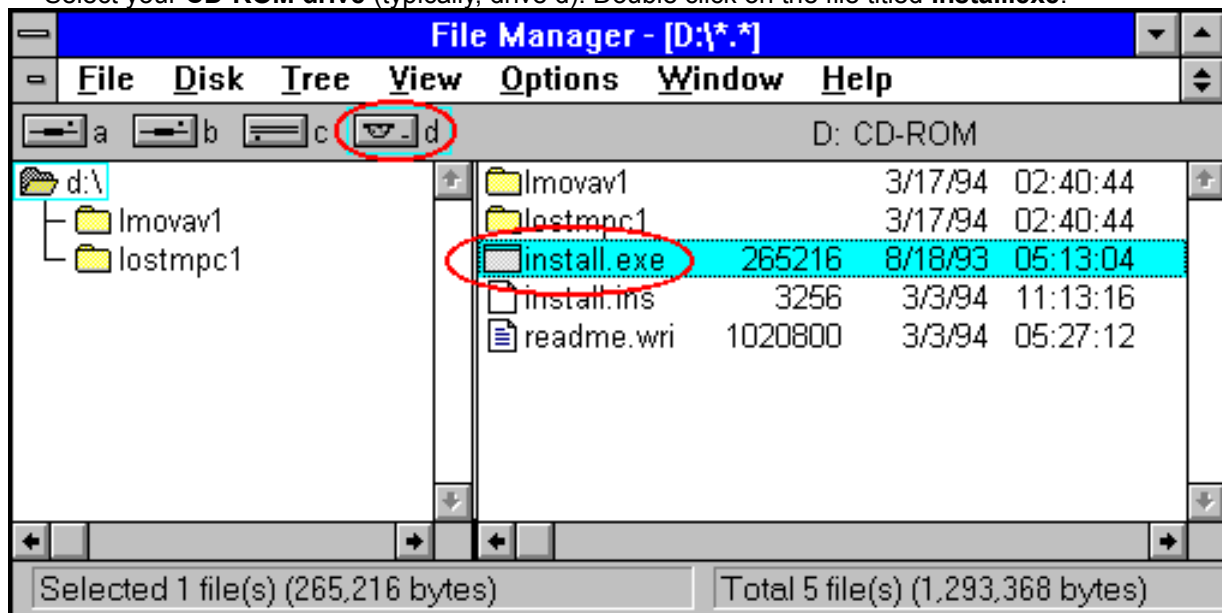
### INSTALLATION:

The normal installation process is described below. If you encounter other than normal conditions during or after installation, please refer to the tips that follow the installation description.

To install this software, open your **File Manager**.



Select your **CD-ROM drive** (typically, drive d). Double click on the file titled **Install.exe**.



The installer program will check your system's resources and install a **program group** and **icon** for this game. The installation process will describe itself to you as it proceeds. It will take about 20 seconds.

**After installation completes:**

The Program Manager will be active. You should see a program group for your new software. If the File Manager window is still open, exit the File Manager to free up as much RAM as possible, then double click the program icon to use the software.



**Run the software for a while. If you experience no odd behavior, You're DONE! Have Fun!**

Note: Using the keyboard's Escape Key will quit this game. Please educate your child in the function of special keys, and when to use them or avoid them.

\*\*\*\*\*

\*\*

**The remainder of this Read Me file is dedicated to troubleshooting or improving your system setup.**

\*\*\*\*\*

\*\*

**You may never encounter a problem running this CD-ROM, but this section will help if you do. Or, you can contact the Technical Support Department at the phone number shown in the product literature.**

**Possible Installation Problems:**

If you see a message saying that there is **not enough memory to install** this game, You don't have enough RAM available. You must free up more RAM (computer memory) or buy more memory. Below are some ways of addressing this condition.

**You can free up available RAM by closing all other applications**, like the File Manager, which may be active, but in a hidden window, or disabling disk-caching TSRs like SMARTDRV.EXE.

**Another way to increase the apparent memory** of your machine, at the price of a little performance, is to create a swap file of about 4000 KB or more (see the section on **Virtual Memory**). This will allow this game to be installed and played. Performance will vary based on the speed of your hard disk.

**Low system resources:**

If your PC has low system resources, commonly due to insufficient RAM or other applications being open, this game might perform erratically (usually losing the audio). To avoid this **be sure that all other applications are closed when you are running this game.**

**Color and Resolution: For optimal performance we recommend you play this game in VGA (640 x 480) and in 256 colors.** Windows standard VGA runs at a screen resolution of 640 x 480 in 16 colors. This game was designed to run at any resolution, but at 256 colors instead of the standard 16. The section on **Changing Color and Resolution** describes how to do this.

**Here are some PROBLEM sound cards and drivers:**

<b>Sound Card Model</b>	<b>Driver Version</b>	<b>Problem(s)</b>
Sound Blaster V1.5 DSP	V2.0	Runs, but no sound plays
Windows Sound System	V1.0	Audio/Video synchronization problems
Soundscape	Ensoniq V1.0	Fails to run

IBM MWave Windsurfer

IBM V4.00

Fails to play title song

**No sound:**

Please check to make sure you have an audio card. This game will not play sound without one. If you have an audio card, but you still don't have sound, consult the audio card manual to configure for Windows. See the section: **Determining if your sound card drivers need updating.**

**Poor/scratchy sound and/or Volume Problems:**

Turn the volume down, you may be overdriving the audio card. If this does not fix the problem there may be a conflict problem with another card in your computer. See your sound card manual about correcting IRQ and DMA conflicts with other cards. Poor quality speakers may also contribute to poor sound.

**Some audio cards have volume controls**

These may be located on the card itself, near the cable ports. Some audio cards may have software volume controls that perform the same function. In either case, check to see that the volume is not set too high or too low.

**Windows Screen Saver:**

If the Windows screen saver activates while this software is running, your mouse will be disabled. We, therefore, recommend that you turn off the Windows screen saver before running this software, or change its activation time interval to half an hour or more. To recover mouse functions, click Alt-F4 to exit from the software, and return to Windows. You can then re-run our software.

**Virtual Memory: The Virtues of Sufficient Memory:**

This game runs faster and offers more features if given enough RAM (memory) in which to run. With sufficient memory, you can use the Magnifier, which is a handy and entertaining tool for locating 'lost' objects.

**We recommend having about 8196 KB ( or 8 Megabytes )** available for programs. You can effectively increase your current RAM by using part of your hard disk as additional 'Virtual' RAM. For example, if your computer only has 6 Megabytes of real RAM, you can add 2 or more Megabytes of **Virtual Memory** to bring your total effective RAM to 8 Megabytes or more.

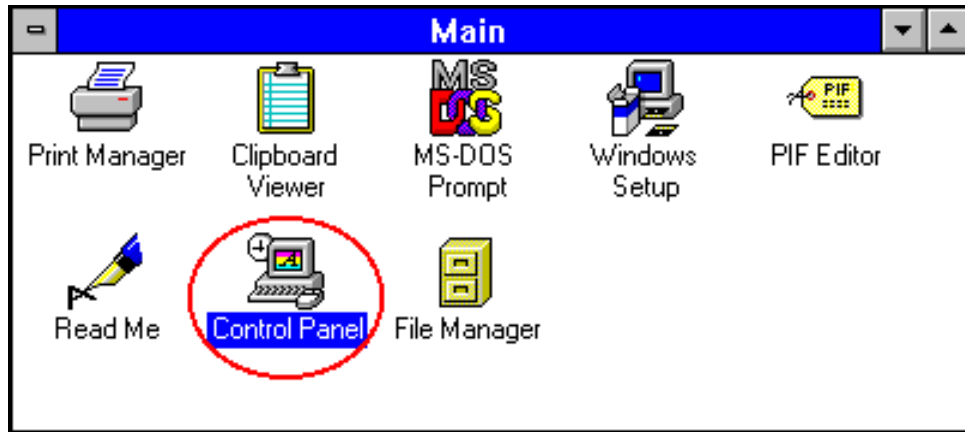
**If your PC has 4 MB of RAM or less, you MUST increase your RAM with Virtual Memory. We recommend a 6144 KB Virtual Memory setting in order to use all the features of this game.**

**The best guideline is this: If after starting the game you hear a message saying that there is not enough memory to use the magnifier, increase the current Virtual memory setting by 1000K, and retry running the game.**

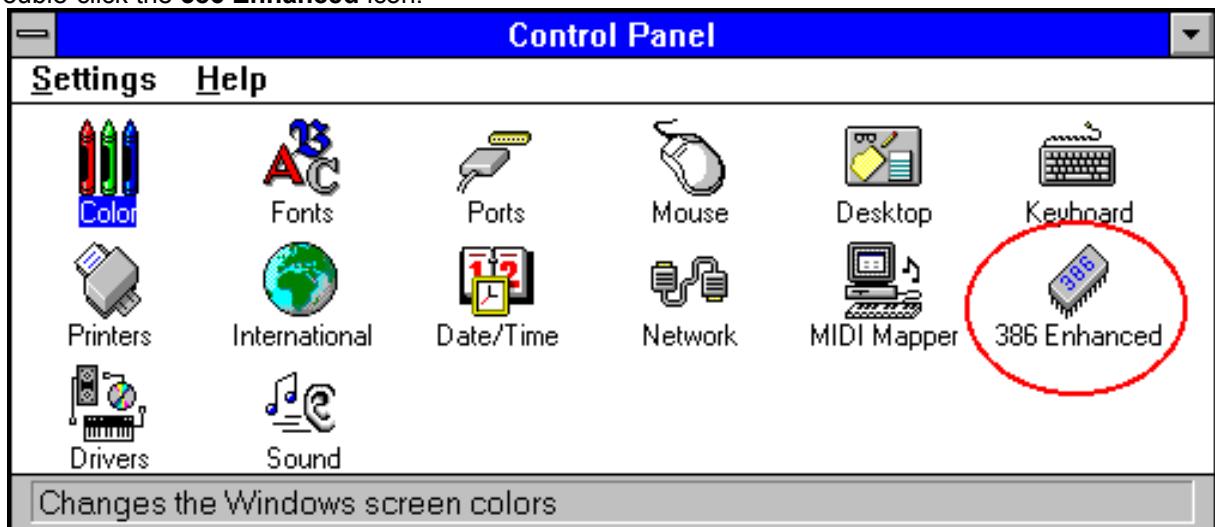
You may already have the Virtual Memory feature activated. If not, use the process described below to check or set-up a virtual memory swap file **of at least 2048 KB, or preferably 4096 KB:**

**(WARNING: If you are running DOS 6.0 and DOUBLESPEACE DO NOT adjust your virtual memory settings. You must upgrade to DOS 6.2. DOUBLESPEACE under DOS 6.0 will corrupt your virtual memory swap file if altered.)**

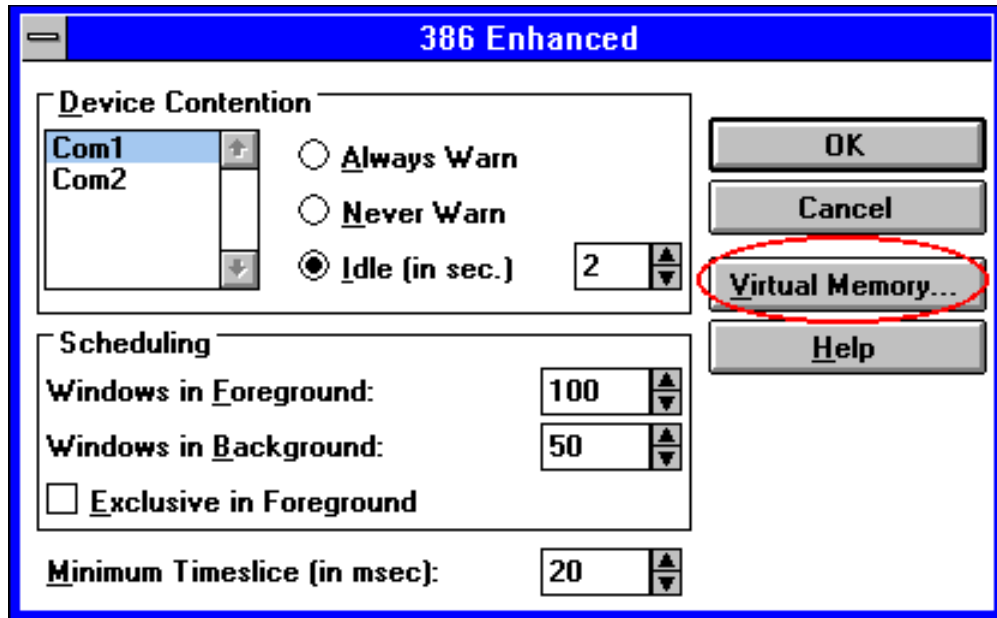
**To adjust Virtual Memory** settings, double click on the **Control Panel** icon (commonly found in the **Main** program group).



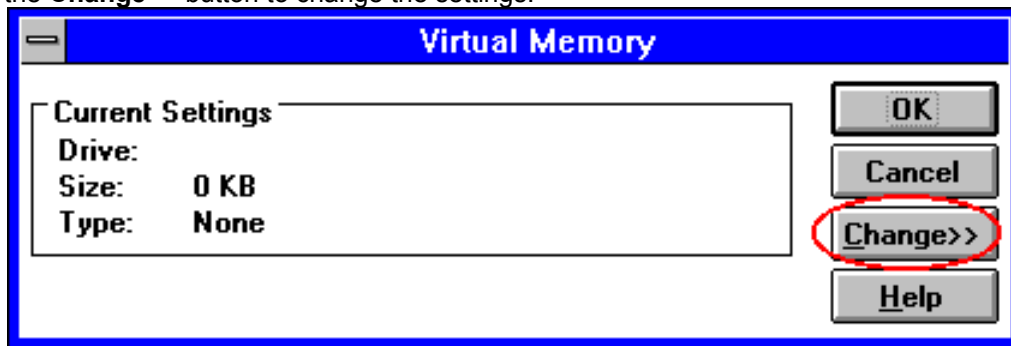
Double-click the **386 Enhanced** icon.



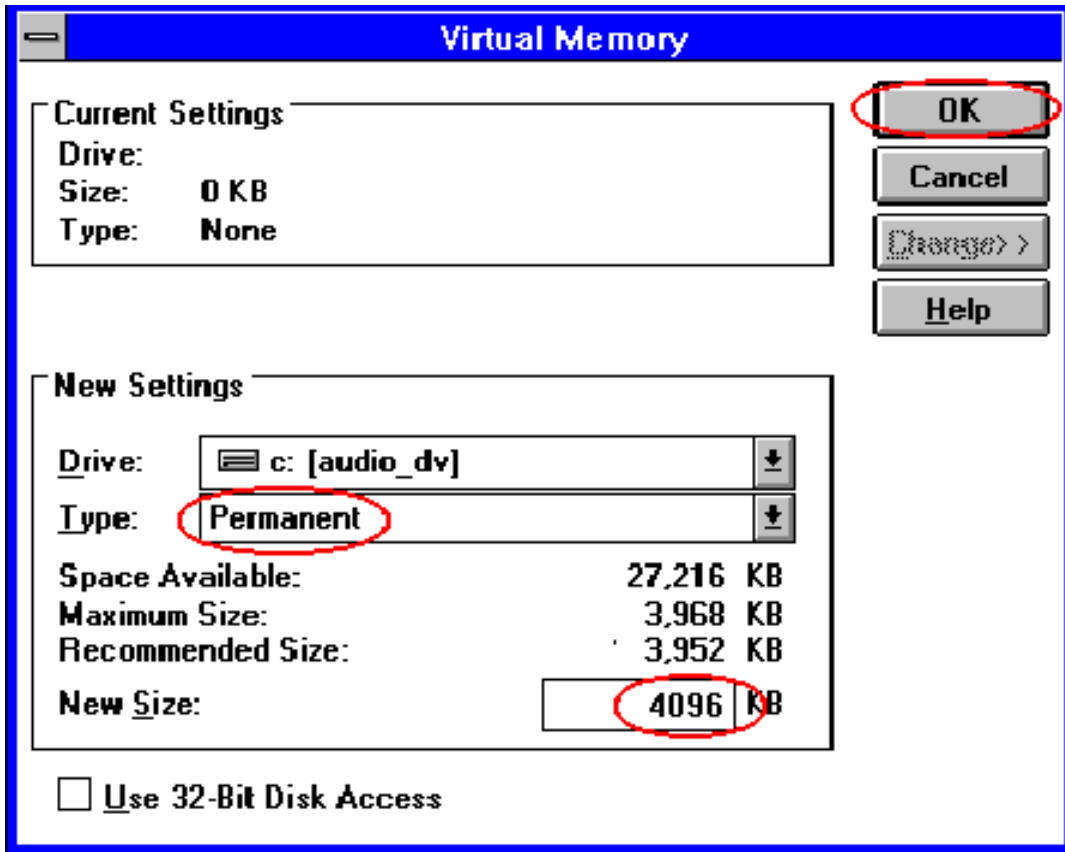
Click the **Virtual Memory...** button.



Click the **Change>>** button to change the settings.



As a type, choose **Permanent** (if the system allows it), or **Temporary**, and type in a value of **4096 KB** (or **8192 KB**, or more if possible)



Click OK to close the Virtual Memory Dialog.

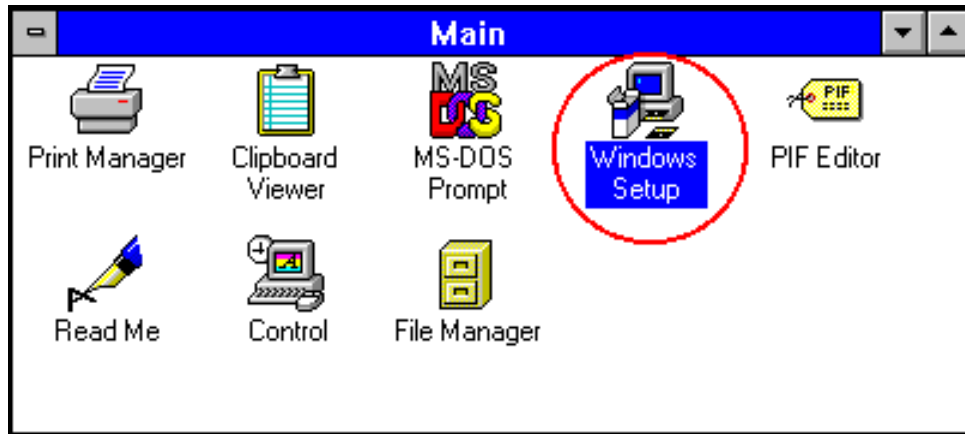
Click OK to close the 386 Enhanced Dialog.

```
*****  
*** You will need to restart Windows for this change to take effect. ***  
*****
```

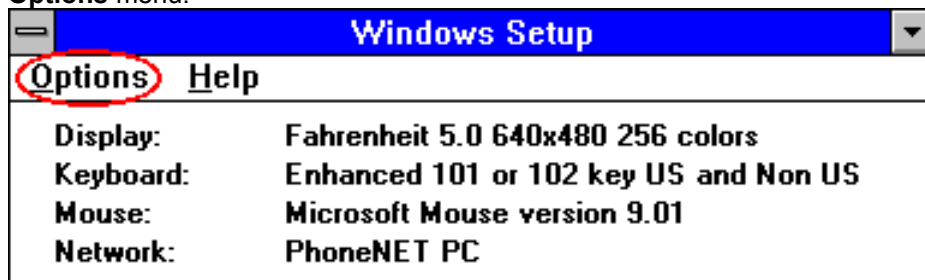
#### Changing Color and Resolution:

**This game was designed to run at any resolution**, but changing the resolution to higher than 640 x 480 will only make the screen display smaller, therefore we recommend that you run it at 640 x 480. We recommend running this software in a 256 color display mode. Running with fewer than 256 colors, will reduce the quality of the display. Running with more than 256 colors will make the displays look nicer, but may slow performance.

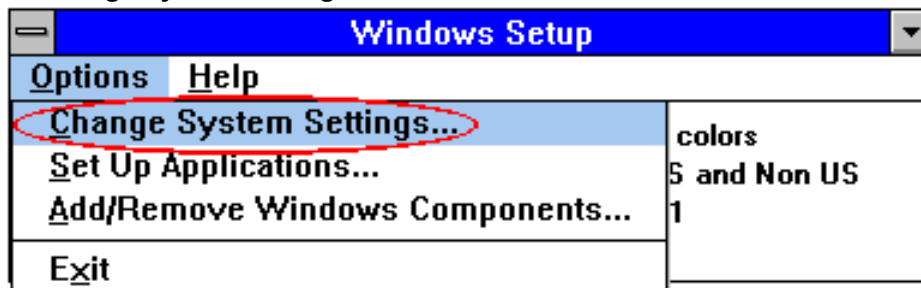
**To change color and resolution** you need to run **Windows Setup** by double-clicking its icon, commonly found in the **Main** program group.



Click the **Options** menu.



Choose the **Change System Settings...** selection.

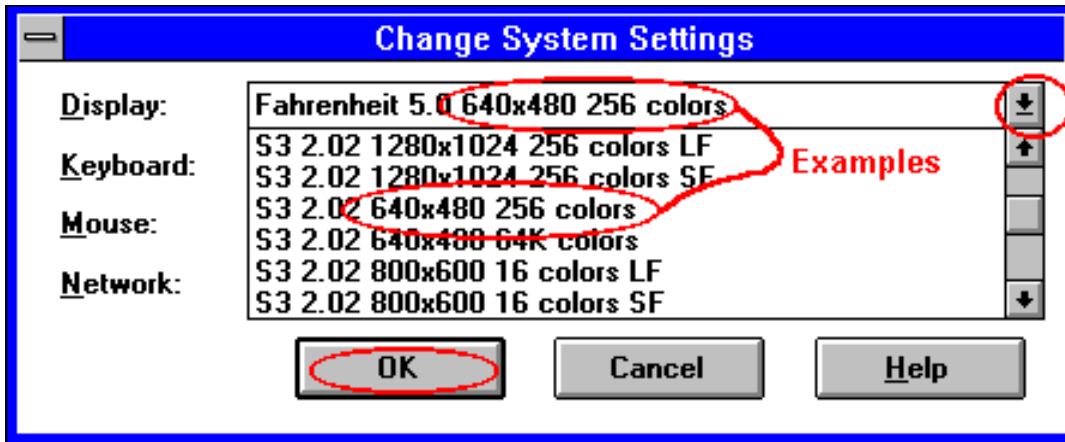


Click the item labeled **Display**: to expand the selections. Use the scroll bar to move through the list of drivers. Select a driver that indicates **640x480 256 colors**.

(Caution: Select the proper driver that matches your video card. Do not, for example select the "Video 7, 512K, 640x480 256 colors" video driver unless you have purchased a Video 7 graphics board. )

Click **OK** when done.





\*\*\*\*\*  
 \*\*\*\* You will need to restart Windows for the change to take effect. \*\*\*\*  
 \*\*\*\*\*

**Possible problems with changing video drivers:** If you have any problems try these quick fixes.

**Screen flickers or Windows never comes up after installing a new driver:**

This is a driver problem. You have selected an incompatible driver for your video card/monitor. You need to restart your computer and go to your windows directory ("cd windows" typically). Inside of the Windows directory, type setup [enter]. This will run the windows setup program. Use the up and down arrows to move to the video slot and hit [enter]. Scroll down to the driver named **VGA** and hit [enter] then [enter] again. This will restore your old video driver. Now you can type win to start windows again. Now try a different driver.

**Can't find any drivers that will display 640x480 at 256 colors?**

There is the possibility that your video card does not support 256 colors. Consult your computer/video card owner's manual to verify the capabilities of your system.

**If your card should support 256 colors, but no 256-color driver is installed:**

You may not have properly installed your video drivers, or the appropriate driver may have been deleted some time after installation. The drivers should be on a disk that came with your computer/video card. Run the installation program found on that disk.

**If there is no installation program on your video driver disk:**

You need to run the Windows setup again. This time select **Other Display (Requires disk from OEM..)** found at the bottom of the list in the Change Systems Settings dialog. Use your driver disk as the OEM disk.

**Picture/Video:**

**The picture looks really bad, not at all like the one on the box:**

You are probably running in 16 colors. Try setting the colors to 256 (see section on Changing Color and Resolution).

**The video playback is intermittent or 'jerky':**

If the video clips are too jerky this is either a problem with your CD-ROM drive being too slow, poor quality, or an old version of QuickTime for Windows installed on your MPC. If you have QTW installed on your computer and this game is crashing, remove QTW or upgrade it to version 1.1.1 or newer. A slower computer will also cause the video to appear choppy.

**The video and audio are out of sync:**

You may have an old version of QuickTime for Windows installed in your path. You must upgrade it or simply remove it from your path in your AUTOEXEC.BAT.

**If you have a graphics accelerator board:**

If you get a **GUI.EXE error** while running this game. Try running windows at 32K colors (see section on Changing Color and Resolution). If this fails, obtain the latest video drivers from your videocard/computer vendor.

**Determining if your sound card drivers need updating:**

**Sound Blaster 16 (from Creative Labs):**

This software has been tested with the latest sound card drivers available. Your system may not have the latest drivers installed, which may result in sound-problems. If you experience such problems:

1) **First, make sure that you have previously run the software installer** provided with your Sound Blaster 16 card.

2) Open the "Sounds" Control Panel, and make sure that you can play the system sounds as expected. If this does not work, consult your sound card documentation, and/or use the phone numbers below to reach Creative Labs:

Technical Support:

(405) 742-6622 Voice

(405) 742-6633 FAX

Bulletin Board for electronic communication and downloading of the latest drivers.

(405) 428-6660

This BBS can communicate with modems from 300 to 14400 bps, using 8 bits, No parity, and 1 stop bit.

1) Use your communications software and a modem to call the number above to establish the connection

2) Log onto the BBS. First time users will need to respond to a short on-line questionnaire.

3) At the BBS's main menu, press 'W' to select the 'Windows 3.1 Drivers' option.

4) From the menu that follows, select the appropriate Creative Labs sound cards that you own. Based on your choices, you will be given a list of update files which are appropriate for your card.

5) Use the download facility of your communications software to obtain the appropriate file(s).

**Pro Audio Spectrum 16 owners:**

Make sure that the "MVSound.sys" line in your config.sys file includes these arguments in addition to any others: **T:1 W:0**