

Contents

RASport *On-Line Documentation*



**Point and Click on each item you need assistance with
or use the tab key to select an item, then press Enter**

[What is RAS \(Remote Access Service\)](#)

[How Rasport Works with RAS](#)

[Installing RASport](#)

[How to Use RASport](#)

Glossary

Use the Word Search Function in Windows 95 and Windows NT for best results

What is RAS (Remote Access Service)

RAS (Remote Access Service) allows a computer running Windows 95, Windows NT, Windows for Workgroups, or Windows 3.1, to access a Windows RAS Server through a local modem*.

The Windows NT Server authenticates the user who connects, and then services the session until terminated by the user. During the connection the user can have access to all the services that are normally available to a LAN connected user (depending on what services that the user is authorized to use). This includes file, print, database access and messaging.

All of the manager tools that are available in Windows (program manager, file manager, print and manager) will function under RAS. This also includes the use of [UNC pathnames](#) and conventional DOS based naming.

As conventional modems are used to make RAS connections through public telephone lines, the standard data compression and error correction protocols available on today's high speed modems are supported (V.32, V.32bis, V.42, etc.).

RAS is fully integrated with Windows NT security and authentication.

For further information on RAS consult you Windows NT System Guide®.

[Click here to return to main screen.](#)

*Other methods of connection are allowed, such as X.25 and ISDN cards. These modes are not supported by RASport.

Installing RASport

Note: Prior to Installing RASport you must stop the RAS service in Windows NT

This is done through the Windows NT control Panel. See the Windows NT system guide for information on Services if you have further questions on this procedure.

The installation of RASport is simple, requiring only two main steps. The first step is to have the software placed into the Windows NT Server's hard drive, then to configure the software as a 'Service'. Click on the following topics for a 'walk through' of the procedure.

**Point and Click on each item you need assistance with
or use the tab key to select an item, then press Enter**

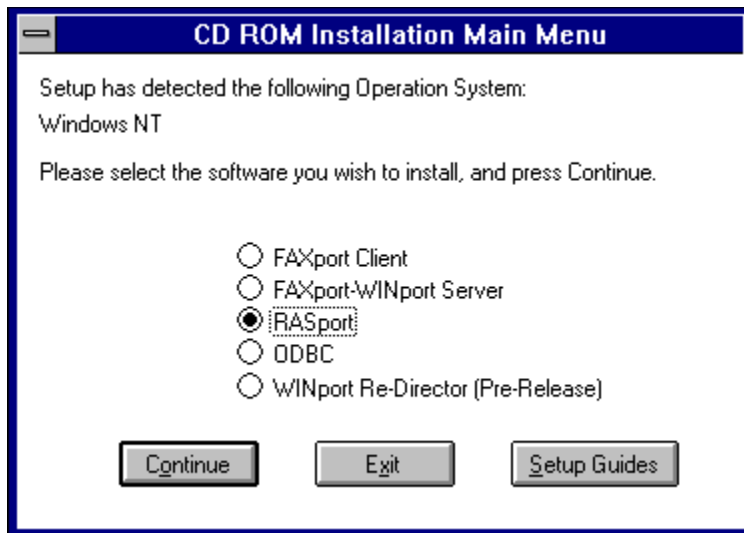
[Starting the Installation](#)

[Using the RASport Installer Program](#)

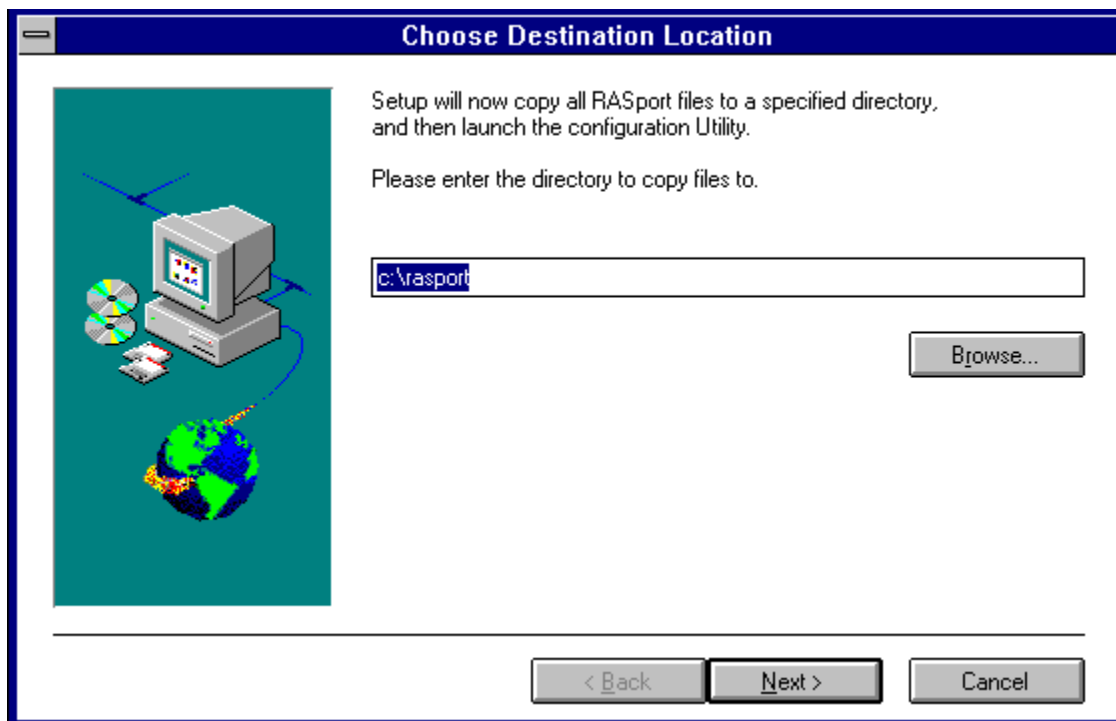
Starting the Installation

If you are installing from CD-ROM, simply choose the RASport Option from the main installation menu.

You will immediately begin the RASport installer program.



Simply choose the RASport option and click on continue.



The RASport files will be copied to either the default directory or to a directory of your choice.

Click here on, [Using the RASport Installer Program](#) for further instructions

Click here for instructions on [Installing from a Diskette](#)

[Click here to return to main menu](#)

Installing from a Diskette

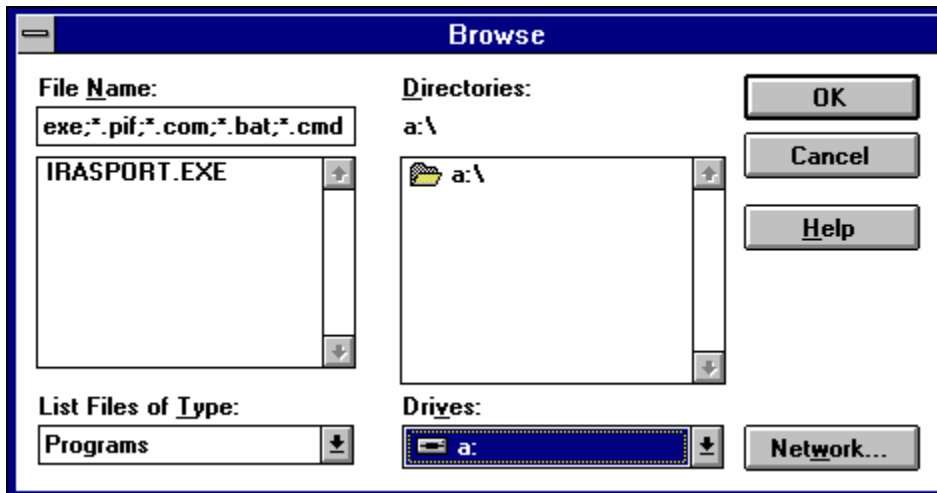
If You are Installing from Diskette use the following:

Simply place the RASport disk in drive A: and use Windows 'RUN' (found under the pull down menu 'File' under the program manager) to launch the program called

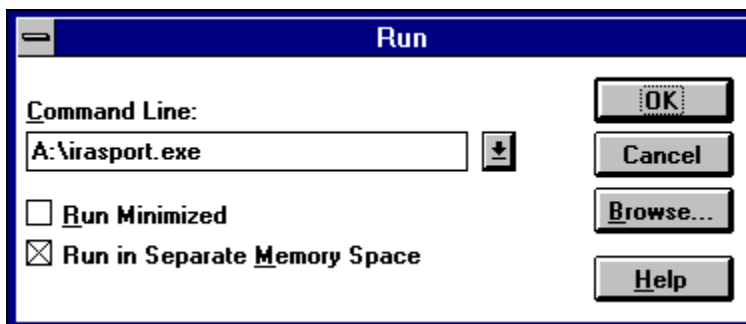
IRASPORT.EXE

To 'RUN' a program you may need to make two steps:

First you may need to click on the 'Browse' button and select the A: drive in order to see the file to RUN. This must be selected and appear in the upper box.



After properly selecting the file, you then click on the 'OK' button. This will return you to the 'RUN' dialog box.



After you click the 'OK' button in the RUN dialog box, you will then see the dialog box called

'RASport Installer'

See [Using the RASport Installer Program](#) for further instructions

Using the RASport Installer Program

The RASport Installer program is very simple to use. Simply click on the 'Install' button to have the files installed as a Windows NT service. Then you would click on the 'Setup' button to define the COM ports.

The only two points that are important to understand are:

First is that the 'Uninstall' function does not remove the files from your system, but simply removes the RASport program as a service from the Windows NT Server.

Secondly, you must restart the Windows NT Server in order to start the RASport function.

Point and Click on each item you need assistance with or use the tab key to select an item, then press Enter



[Click here for instructions on how to use RASport](#)

How RASport Works with RAS

RAS (Remote Access Service) in the Windows NT program allows a remote client to access a Remote Access Server in the Local Area Network and connect to it via a telephone line. When the connection is made there is a transparent access to the Local Area Network resources for the person connected.

The Remote Access Service provides a number of features such as SQL Server, SNA Server for Windows NT and Lotus Notes™. (See the MicroSoft™ Windows NT System Guide for further details on this feature).

The benefit of using RASport is based on improving the way that COM ports are used under RAS.

Normally RAS needs a dedicated COM port and when someone is not connected to the RAS Server, that COM port is idle.

With RASport, NT communications programs can **share** an NT serial port with RAS so they are constantly available for use. This allows for a more efficient use of modems on a system by reducing their potential idle time.

(Note: The RASport setup dialog lists all the serial COM ports that are available on the NT System (up to 16 physical ports in total).

[Return to main menu](#)

How to Use RASport

The following topics document how to setup and use RASport with a Windows NT Server

**Point and Click on each item you need assistance with
or use the tab key to select an item, then press Enter**

[Using RASport](#)

[Handling Inbound and Outbound Calls with RASport](#)

[Opening Extra COM port Names](#)

[RASport and Adaptive dial-in](#)

[RASport and FAXport 5.0](#)

[Application Use Limitations](#)

[RASport Error Reporting](#)

[Supported Modems and Serial Ports For RASport](#)

[Modem Initialization Strings and RASport](#)

[Return to main menu](#)

Using RASport

When you specify that RASport should use a COM port, RASport will automatically provide a different names for that COM port .

E.G. The extra COM port name (e.g. RASPORT2)

After RASport has been started, both of the COM port names will be visible to NT communications programs (like RAS, FAXport, and Windows Terminal) *will be the regular COM port number. **The RASport name is displayed in the monitoring functions of Windows NT only.***

E.G. The extra COM port name (e.g. RASPORT2) will not be shown in the box used to select a COM port as is found in a regular terminal or fax program(e.g. FAXport, and Windows Terminal) even while RAS has opened the original COM port name and is listening for an incoming call.

Using RASport you will be able to select and connect to the COM port normally reserved for use by RAS. You would normally see an error message if you attempted this connection otherwise.

Remember: If RAS is using a RASport defined port you will still not be able to connect to that port until RAS has finished with it.

Handling Inbound and Outbound Calls with RASport

a) The current version of RASport supports RAS dial-in, but not RAS dial-out (so do not dial an outbound RAS connection on a COM port that is being shared by RASport).

b) RASport monitors I/O activity on each COM port, to determine when the port is idle

(where 'idle' means that the application has open the port, but is merely sitting there waiting for an incoming call) ...

Opening Extra COM port Names

If a program (e.g. FAXport or Windows NT Terminal) tries to open the extra COM port, while RAS is actively handling an incoming call through the original COM port, then the attempt to open the extra COM port will fail (and the RAS connection will not be interrupted). If this happens, simply wait until the RAS connection has finished: as soon as RAS is idling, waiting for an incoming call, then the attempt to open the extra COM port name will succeed.

RASport and Adaptive dial-in

The current version of RASport supports adaptive dial-in connections on the extra COM port, only if that extra COM port is being used by FAXport (not by any other application); whenever an application other than FAXport is using the extra COM port, then RAS will not be able to receive incoming calls.

RASport and FAXport 5.0

If FAXport 5.0 is using the extra COM port but has allowed the line to idle (because it has no outbound faxes to send, and is merely listening for an incoming fax), then RASport will use the modem's adaptive answer to route any incoming call to the correct program: incoming data calls are passed to RAS, and incoming fax calls are passed to FAXport.

Application Use Limitations

Only one application at a time can be using the extra COM port. For example, if the extra COM port is being used by FAXPORT, then you will not be able to open that COM port using Windows Terminal program.

Modem Initialization Strings and RASport

RASport watches the modem initialization strings that are sent by RAS, so that whenever an application finishes using the extra COM port, RASport can reinitialize the modem into the state expected by RAS.

RASport will be confused by the multitude of strings that RAS sends to the modem, when RAS is trying to detect the type of modem (when you use Control Panel/Network to install RAS, or to configure it for a new COM port or new type of modem).

Control Panel will tell you to restart the system, whenever you change the RAS settings: you should do this (RASport will not be able to properly reinitialize the modem until after the system is restarted; you will see the following RASport message in the NT System Event Log "The last modem initialization string captured from RAS did not contain the expected 'Answer On' (i.e. S \emptyset =)").

RASport Error Reporting

When RASport is used (or abused), RASport cannot display messages on the Windows desktop (because RASport is a Windows NT kernel-mode device driver). Instead, information messages (for example, which say that RASport is loaded successfully), and any error messages, can be displayed using the NT System Event Log.

Supported Modems and Serial Ports for RASport

RASport has been tested only with SERIAL.SYS (the standard Windows NT serial port driver).

Due to the nature of RASport's design, it should work with other serial drivers.

Only 16550AF UART (serial chip) or the equivalent (e.g. data buffering supported such as provided by US Robotics' [USR] internal modem's) should be used in a serial port for data (or fax) communications. 8250 and 16450 UARTs are now considered obsolete for today's data and fax software.

See the latest Windows NT Hardware Compatibility List for a list of modems supported by RAS as supplied by Microsoft.

Faxport will work with any **Class 1**, **Class 2**, or **Class 2.0** fax or fax data modem (there are too many of these modems to list). However, *the current version of RASport can provide adaptive answer **only for Class 2.0 modems***. The following are Class 2.0 modems which have been tested with RASport:

- ◆ USR Courier with Supervisor date 07/10/95
- ◆ USR Sportster 288 with Supervisor date 04/18/95 rev 6.0.5 DSP date 03/31/95 rev 1.0.9

UNC - Universal Naming Convention

UNC Pathnames makes it easier to access network resources by providing a standard naming scheme to reference network servers, and shared directories.

UNC allows the user to browse and connect to network servers without mapping a drive letter to a network resource.

In the different dialog boxes and viewing screens of your Windows utility and application programs, such as FAXport 5.0 [sold separately], you will see your components such as Phonebooks or data storage folders shown in a new format from the way in which was done under MS-DOS™.

Under the old method of connecting to a file or program, you would see a FAXport folder shown like this:

```
C:\FAXPORT\FOLDER\FOLDER.SER
```

which is the

```
drive name:\root directory\first sub-directory\sub-directory\file name
```

Under UNC Pathnames you will now see it show like this:

```
\\ADMIN\APPS\FOLDER\FOLDER.SER
```

which is now

```
\\servername\sharename\pathname\filename
```

- The **servername** identifies the name of the computer (server) where the information resides.
- The **sharename** identifies the name of the shared file resource that the information has been shared under.
- The **pathname** is the name of the directory where the **file** (filename) you wish to use resides.

Now, rather than having to know a complicated and detailed list of directories, sub-directories and drives, all you need to know is exactly where the information you need is to be found.

Using UNC Pathnames then allows you to use the power of the Windows operating system to be able to browse for information in your local area network with greater ease than you could with MS-DOS based drives.

For further information on UNC Pathnames consult your Microsoft System Guide.

Install

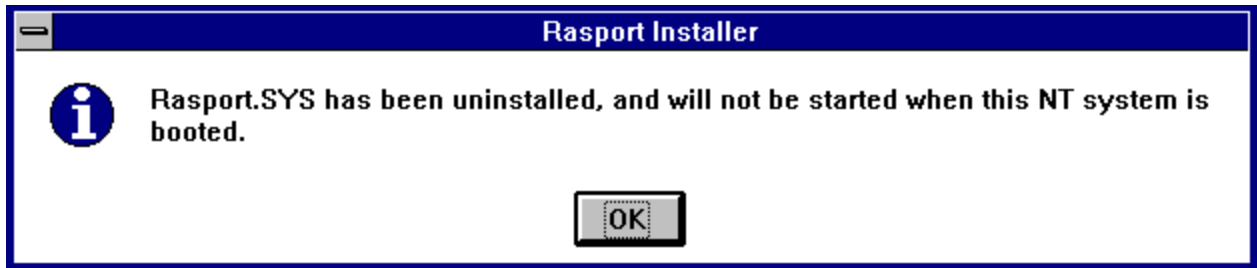


In the first step of the setting up of the RASport program you will be asked to confirm on the directory where the files should be placed.



When this has been done you will be asked to proceed to the setup of the COM ports.

Uninstall



When you 'Uninstall RASport, you are not doing the same function as 'de-install' where files are removed from the hard drive. Instead, what you are doing is terminating the function of the program completely. You can 're-install' at any time.

Setup

The setup dialog box allows you to define the RAS COMports to be used by Windows communications programs under RASport.

You will be shown all of the COM ports that are available on the Windows NT Server and you will select the COM port that is being used by the RAS Server. This is done by pointing and clicking on the COM port (COM2, COM3 etc) shown in the box called 'Not used by RASport'.

When the COM port (e.g. COM2) has been transferred to the 'Used by RASport' box on the left, simply give it an 'extra name' that will be 'seen' by a Windows NT monitoring functions.

You will see the COM port as a regular COM port in the fax or terminal software you are using. As it will be available for use when RAS is not being accessed by the COM port you will not get an error message if it is selected for

To save these values, click on the 'Close' button, then restart the Windows NT Server to start RASport.

[Click here to see the RASport Setup Screen \(Dialog Box\).](#)

[Click here to return to the Contents screen](#)

Help

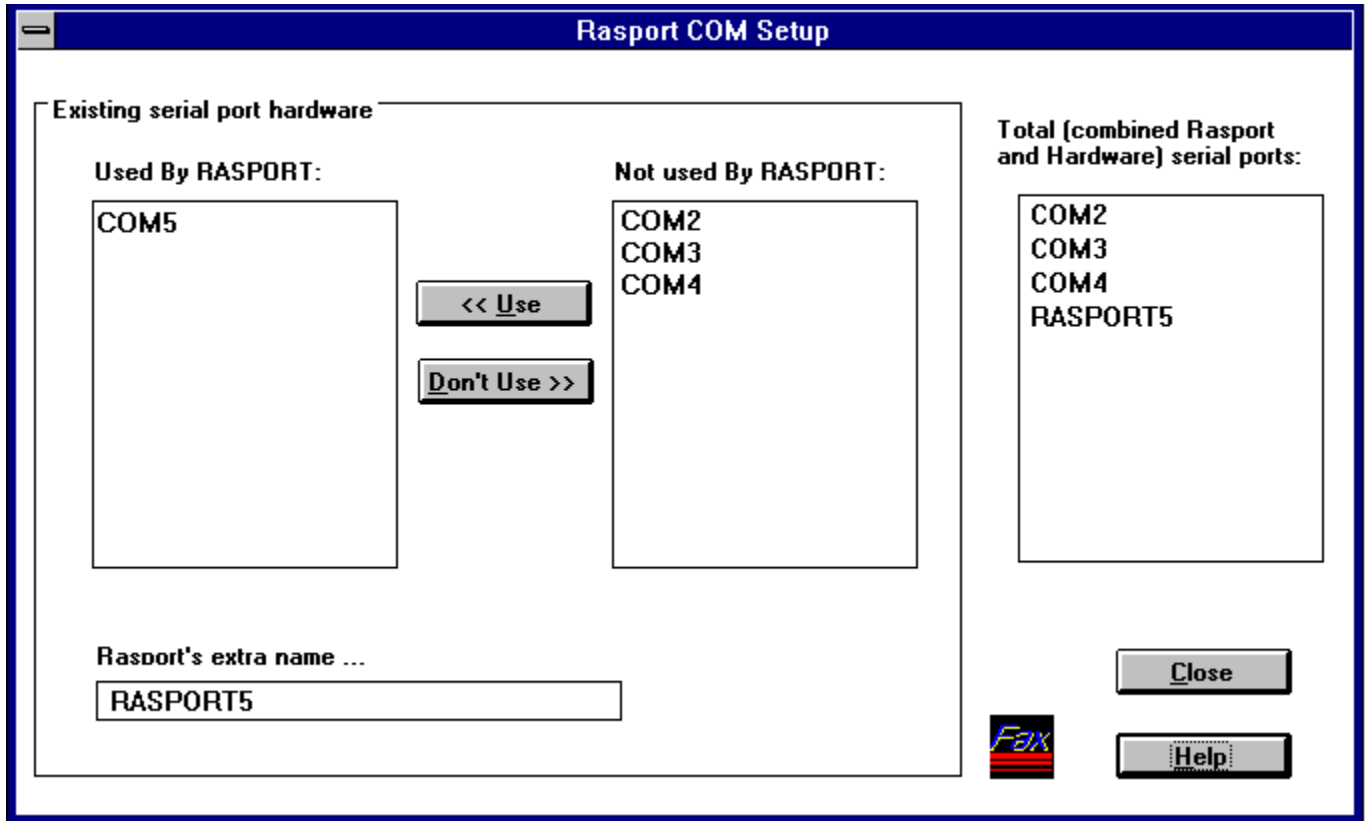
Access to the On-Line documentation.

Cancel

Ends the Installation process with out any permanent changes being made.

RASport Setup Screen

The dialog box below allows you to see the available COM ports and simply chose the ones that RAS will share with RASport.



Creation Date

Created January February 29, 1995

Reference CD ROM #6

Build 5018 r

LANSOURCE Technologies, Inc.
221 Dufferin St., Suite 310A
Toronto, Ontario
M6K 3J2

Telephone: (416) 535-3555
FAX: (416) 535-6225
Sales Only 1-800-677-2727
BBS (416) 535-5878
CompuServe golansource
Internet <http://www.lansource.com>

LANSource Terms of Agreement

Agreement

Copyright © by LANSOURCE TECHNOLOGIES INC. All rights reserved. No part of this document may be reproduced, transmitted, transcribed, stored in a retrieval system, or translated into any language or computer language, in any form or by any means, electronic, mechanical, optical, chemical, manual or otherwise, without the prior written consent of LANSOURCE TECHNOLOGIES INC.

The Software described in this document is furnished under a license agreement. The Software may be used or copied only in accordance with the terms of the license agreement. It is against the law to copy the Software on tape, disk, or any medium for any purpose other than described in the license agreement.

LANSOURCE TECHNOLOGIES INC. makes no representations or warranties with respect to the contents of this document and the accompanying Software, and specifically disclaims any implied warranties of merchantability or fitness for a particular purpose. This manual and the accompanying Software are sold "as is" and LANSOURCE TECHNOLOGIES INC. will in no event be liable for direct, indirect, incidental, or consequential damages resulting from any defects, error, or failure to perform. Furthermore, LANSOURCE TECHNOLOGIES INC. reserves the right to revise this document and accompanying Software and to make changes from time to time in its contents without being obligated to notify any person of such revisions or changes.

Trademarks

LANSource, FAXport, FAXport Client, FAXport Administrator, FAXport Server, WINport, DOSport, 386port, The FAXport 'FAXbird' and its image are Trademarks (™) of LANSource Technologies Inc.

Other product names are Trademarks of their respective companies

LANSource Software Agreement

LANSource License Agreement

FAXport Product

Read carefully: By opening the sealed packet(s) OR exercising your rights to make and use copies of the SOFTWARE (as may be provided for below), you agree to be bound by the terms of this license Agreement. If you do not agree to the terms of this agreement, promptly return this package to the place from which you obtained it for a full refund.

LANSource Software License

Copyright © 1995 by LANSOURCE TECHNOLOGIES INC. All rights reserved worldwide. No part of this document may be reproduced, transmitted, transcribed, stored in a retrieval system, or translated into any language or computer language, in any form or by any means, electronic, mechanical, optical, chemical, manual or otherwise, without the prior written consent of LANSOURCE TECHNOLOGIES INC.

The Software described in this document is furnished under a license agreement. The Software may be used or copied only in accordance with the terms of the license agreement. It is against the law to copy the Software on tape, disk, or any medium for any purpose other than described in the license agreement.

LANSOURCE TECHNOLOGIES INC. makes no representations or warranties with respect to the contents of this document and the accompanying Software, and specifically disclaims any implied warranties of merchantability or fitness for a particular purpose. This manual and the accompanying Software are sold "as is" and LANSOURCE TECHNOLOGIES INC. will in no event be liable for direct, indirect, incidental, or consequential damages resulting from any defects, error, or failure to perform. Furthermore, LANSOURCE TECHNOLOGIES INC. reserves the right to revise this document and accompanying Software and to make changes from time to time in its contents without being obligated to notify any person of such revisions or changes.

Trademarks

LANSource, FAXport, WINport, RASport are Trademarks of LANSource Technologies Inc. Other product names are Trademarks of their respective companies.

Grant of License. This LANSource product contains software that provide services on a computer called a Fax Server ("Server Software"), and software that allows a computer or workstation to access or utilize the services provided by the Server Software ("Client Software"). LANSource grants to you the following rights to the Client Software and the Server Software (collectively called the "SOFTWARE"):

Installation: You may install one copy of the Server Software on a single computer (the computer running the Server Software shall be referred to as the "Server"). You may install the Client Software on any computer or workstation. The CD or diskettes(s) on which the Server Software resides may contain several copies of the Server Software, each of which is compatible with a different microprocessor architecture (such as the x86 architecture or various RISC architectures). You may install the Server Software for use with only one of those architecture at any given time.

Use of the Client Software. You may use the Client Software to configure and administer the Server. If you use the Client Software to access or otherwise utilize the services of the Server or for any other purpose, you must acquire a separate Client Access License unless otherwise noted in Section 2 of this agreement.

Per Seat Mode. Use of the Server Software. You may use one copy of the Server Software on one server or workstation, which may be connected at any point in time to an unlimited number of workstations or computers operating on one or more networks. You must acquire a separate Client Access License to access or otherwise utilize the services of the Server, whether you use the Client Software or third-party software to do so, unless otherwise noted elsewhere in this agreement. Each Client Access License must be dedicated to one unique computer, workstation or user. It permits that computer, workstations or user to access or utilize the services of the Server. This is known as using the Server Software in "Per Seat Mode". However you may elect to use the Server Software in "Per Server Mode" as defined below, if you choose Per Seat Mode, as long as you acquire a Client Access License for each unique workstation, computer or user accessing or utilizing the services of a server.

Per Server Mode. Alternate Terms. You may elect to use the Server Software for FAXport in Per Server Mode. In Per Server Mode, the maximum number of computers or workstations that may access or otherwise utilize the services of the Server at a given point in time is equal to the number of Client Access Licenses that you have acquired and designated for use exclusively with that Server. You may access any Server running in the Per Server Mode by using any LANSource or third-party client software, including computers or workstations or users licensed in Per Seat Mode, provided the additional access is within that Server's maximum licensed capacity of simultaneously Seat Mode, you may transfer any Client access Licenses you acquired for use in Per Seat Mode to an equal number of workstations or computers in Per Server Mode.

Other Transfer - You may transfer the Server Software to another computer, provided that it is removed from the computer from which it is transferred. Notice to Users - You shall inform all users of the SOFTWARE of the terms and conditions of the LANSource License agreement. Not for resale Software - If this SOFTWARE is labeled "not for resale" or "NFR" your license only permits use for demonstration, test, or evaluation purposes. Academic Edition Software - If this SOFTWARE is labeled "academic Edition" or "AE" your license only permits use in qualified educational settings. License Pack - If this package is a License Pack, you may install and use additional copies of the Client Software up to the number of copies specified above as "Licensed copies". Number of copies specified above as "Licensed Copies" No "Multiplexing" or "Pooling" - Use of software or hardware that reduces the number of user's directly accessing or utilizing the Server Software (sometimes called "multiplexing or pooling" software or hardware) does not reduce the number of client Access Licenses required. The required number of Client Access Licenses would equal the number of distinct

inputs to the multiplexing or pooling software "front end".

Note regarding the use of LANSource's FAXport with either WindowsNT, Windows, Windows for Workgroups or Windows95, or any other software including Mail products. You require an appropriate and separate license any of these software products to run LANSource's Software, as it is not provided nor is it part of this package or license. If you acquired any of these aforementioned products then they are subject to the terms and conditions of the separate end-user license agreement for those products as provided in their own package.

DESCRIPTION OF THE OTHER RIGHTS AND LIMITATIONS.

For All SOFTWARE -You may not use the Server Software as part of or as the basis for a commercial public access data network consisting of two or more Servers that carries end-to-end electronic information traffic, such as messaging, data replication, fax, EDI, or telax, unless you obtain a separate commercial use license from LANSOURCE. You may NOT rent and you may NOT lease the SOFTWARE to any third party, but you may transfer the SOFTWARE and accompanying written materials on a permanent basis, provided you retain no copies and the recipient agrees to the terms of this agreement. You may not reverse engineer, decompile, or disassemble the SOFTWARE, except to the extent such foregoing restriction is expressly prohibited by applicable law. **VERSION LIMITATION** - The Server Software contains a certain version number (such as version "5.0"). This License permits you to install one copy of the Server Software with the same (or a lower) version number, but not a "5.1" version number). **TERMINATION** - Without prejudice to any other rights, LANSource may terminate this license if you fail to comply with the terms and conditions of this License. In such event, you must destroy all copies of the SOFTWARE.

FOR LANSOURCE FAXPORT SERVER - The Server Software may be used by no more than four (4) modem or fax devices installed on the Server at one time (Support for greater than four processors is available from authorized computer hardware vendors and requires a separate add-on license.)

FOR LANSource's API - You do not need a separate API Client Access License in order to execute the API Services or procedures. You may not disclose the results of any benchmark test of either the Server Software, the Client Software or the API to any third party without LANSource's prior written approval. **NOTE REGARDING THE USE OF RUN TIME SOFTWARE.** LANSource hereby grants to you a limited non-exclusive, royalty free execution of compiled applications ("run-time Files") in conjunction with and as part of your application software product that is created using the LANSource API Software, provided that (a) you do not use LANSource's name, logo, or trademarks to market your software product (b) you include a valid copyright notice and you must distribute all API components specified in the README file in conjunction with your software product (c) you do not charge separately for the RUN Time Files (d) you do not modify the Run time Files and (f) you agree to indemnify, hold harmless and defend LANSource and it's suppliers from and against any claims or lawsuits, including attorneys' fees, that arise or result from the use or distribution of your application software product. **NOTE** - Each API Client must be accompanied by a valid Client and Server license.

For LANSource Administrator console. You must acquire at least one valid Server License for LANSource FAXport Server to use the Administrator console. However, you do not need to acquire a Client Access License for LANSource FAXport Server to use the Administrator Console or utilities provided with FAXport Server to access or otherwise utilize the services of LANSource FAXport Server.

UPGRADES. If this Server is an "Upgrade," you must have a license for the qualifying product that is being upgraded for this Server Software license to be valid, and this Server software must be used to replace such qualifying product.

OWNERSHIP. The SOFTWARE is licensed, not sold to you. All rights, title and copyrights in and to the SOFTWARE (including any images, applets, photographs, animations, videos, audio, music, and text incorporated into the SOFTWARE, including any adaptations or copies) are exclusively owned and held by LANSource and or/its suppliers and Licensers. Accompanying printed materials, and any copies you are permitted to make herein are owned by LANSource or its suppliers and Licensers and are protected by United States and Canadian copyright laws and by international treaty provisions. Therefore, you must treat (a) make one copy of the SOFTWARE or backup or archival purposes. You may not copy the printed materials accompanying the SOFTWARE.

DUAL MEDIA SOFTWARE. You may receive the SOFTWARE in more than one medium. You may only use one of the copies which might be available. Regardless of the type or size of the medium you receive ,you may use the SOFTWARE only as described in this Agreement.

Protection of Software. You agree to take all reasonable steps to protect the Software and Documentation from unauthorized copying or use. Without limiting any remedies or relief which may be available to LANSource, You agree to pay LANSource for additional licenses if You use the Software on more than the licensed number of Servers or Clients or in any way beyond the scope of this License.

LIMITED WARRANTY AND LIMITED LIABILITY.

Registration Card. You may lose all rights under this Limited Warranty unless the Registration Card is promptly completed and returned to LANSource.

Compatibility. The Software is only compatible with certain personal computers. The Software may not be compatible with and is not warranted for non-compatible systems. Call LANSource Customer Support or your Dealer for information on compatibility.

Media and Documentation. LANSource warrants that if the enclosed medium, either diskette or CD-ROM and Documentation are in a damaged or physically defective condition at the time that the License is purchased and if they are returned to LANSource (postage prepaid) within 90 days of purchase, then LANSource will provide You with replacements at no charge.

Software. LANSource warrants that if the Software fails to substantially conform to the specifications in the Documentation and if the nonconformity is reported in writing by You to LANSource within ninety (90) days from the date that the License is purchased, then LANSource shall make the best effort to remedy the nonconformity. In such a case that LANSource cannot for whatever reason remedy the nonconformity LANSOURCE shall provide you with a full refund based on proof of purchase.

DISCLAIMER OF WARRANTIES

LANSource makes no warranty, representation or promise not expressly set forth in this agreement. LANSource disclaims and excludes any and all implied warranties of merchantability and fitness for particular purpose. LANSource does not warrant that the software or documentation will satisfy your requirements or that the software and documentation are without defect or error or that

the operation of the software will be uninterrupted. This limited warranty gives you specific legal rights.

LIMITATION OF LIABILITY

LANSOURCE's aggregate liability arising from or relating to this agreement or the Software or Documentation is limited to the total of all payments made by or for You for the License. LANSOURCE shall not in any case be liable for any special, incidental, consequential, indirect or punitive damages even if LANSOURCE has been advised of the possibility of such damages. LANSOURCE is not responsible for lost profits or revenue, loss of use of the Software, loss of data, costs of re-creating lost data, the cost of any substitute equipment or problem, or claims by any party other than You.

SOLE REMEDY AND ALLOCATION OF RISK

Your sole and exclusive remedy is set forth in this License Agreement. This License Agreement defines a mutually agreed-upon allocation of risk and LANSOURCE's prices and fees reflect such allocation of risk.

GENERAL CONDITIONS

Governing Law. This Agreement shall be governed by, and interpreted in accordance with, the laws of the Province of Ontario, Canada.

Entire Agreement. This License Agreement sets forth the entire understanding and agreement between You and LANSOURCE and may be amended only in a writing signed by both parties. No vendor, distributor, dealer, retailer, sales person or other person is authorized to modify this agreement or to make any warranty, representation or promise which is different than, or in addition to, the representations or promises of this License Agreement.

Waiver. No waiver of any right under this License Agreement shall be deemed effective unless contained in writing signed by a duly authorized representative of LANSOURCE, and no waiver of any past or present right arising from any breach or failure to perform shall be deemed to be a waiver of any future right arising under this License Agreement.

Severability. If any provision in this License Agreement is invalid or unenforceable, that provision shall be construed, limited, modified or, if necessary, severed, to the extent necessary, to eliminate its invalidity or unenforceability, and the other provisions of this License Agreement shall remain unaffected.

