

LANSource™ Technical Information

LANSource Technologies Inc. 221 Dufferin St., Suite 310A Toronto, Ontario M6K 3J2 CANADA

Topic Number: FXP5014

Subject: The FAXport Macro for Microsoft Word (ver 6.0) for Windows

Release Date: 09/20/95 Total number of pages: 1 Revision: 1.0

1.0 Situation

The macro allows you to make the selection of FAXport as your printer a simpler operation and to open an existing data base in the FAXport phonebook for doing mailmerge.

1.1 Description of problem

You do not want to have to change from your default printer, (which may be either a Laser Printer or Dot Matrix printer), to FAXport and then back again through the printer setup option. Each time this is done you must do several time consuming steps. Doing a Mailmerge may required that you re-enter an external database into the Word program.

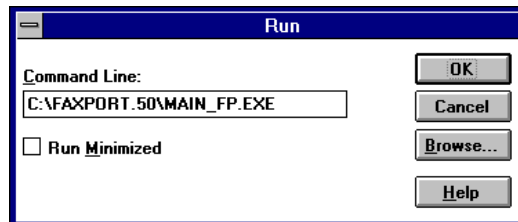
1.2 Solution to problem

Lansource has produced an accessory program to FAXport that will automatically install a 'FAX' option into Microsoft Word for Windows (version 6.x only). This 'FAX' option appears as a new button on the 'Standard' toolbar that can be displayed in the editing window of the program.

In addition to the ability to 'FAX' from with in a document, a further option is made available to be able to use the database from a particular Phonebook from FAXport for a Mailmerge operation in Word..

The following sections outline the simple instructions for the installation process of these options, as well as instructions on how to use them.

1.3 Starting the Installation program



Step 1: Goto the FAXPORT directory and run the file called "main_fp.exe"

All technical information is Copyright © 1995 LANSource Technologies Inc. - All Rights Reserved World Wide - FAXport, WINport, RASport and DOSport are Registered Trademarks (™) of LANSource Technologies Inc. -Other product names are Trademarks of the respective companies

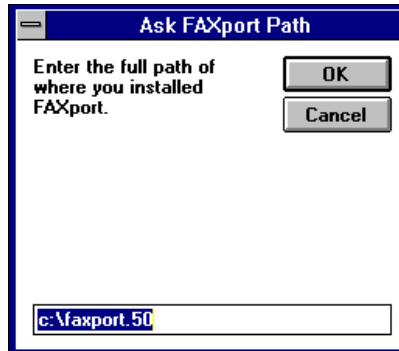
To contact LANSource: Telephone (416) 535-3555 - FAX (416) 535-6225 - BBS (416) 535-5878 - CompuServe go LANSource - Internet through <http://www.lansource.com>

Step 2: You will see a dialog box with two choices; Word for Windows and Excel.



Select the applications you would like to install buttons to and press "INSTALL"

Step 3: When prompted for the path for Word for Windows type in the complete path of where FAXPORT was install to (for example: c:\faxport.50)



In moments you will see the above application(s) appear with buttons added to their respective toolbar(s).



1. "Fax" - prints the active document to FAXport
2. Blue Phonebook - opens a data source used for mail merges