



A  
B  
C  
D  
E  
F  
G  
H  
I  
J  
K  
L  
M  
N  
O  
P  
Q  
R  
S  
T  
U  
V  
W  
X  
Y  
Z

For information on an item, click on it with the mouse when you see the  cursor.



### Fonts Installation

Click on this icon for instructions on installing Kids' Fonts.



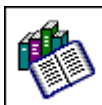
### Fonts Browser

Click on this icon for a tour of the Fonts Browser.



### Removing Fonts

Click on this icon for instructions on removing fonts.



### Font List

Click on this icon for a list of the font families included in Kids' Fonts.



### Product Support

All Expert Software customers in need of product assistance can receive free support Monday through Friday from 9:00 AM to 5:00 PM Eastern Standard Time.



### Frequently Asked Questions

Click on this icon for answers to the most commonly asked questions about Kids' Fonts.

---

[For Help on Windows Help, click here](#) 

[For Help on Expert's Help, click here](#) 

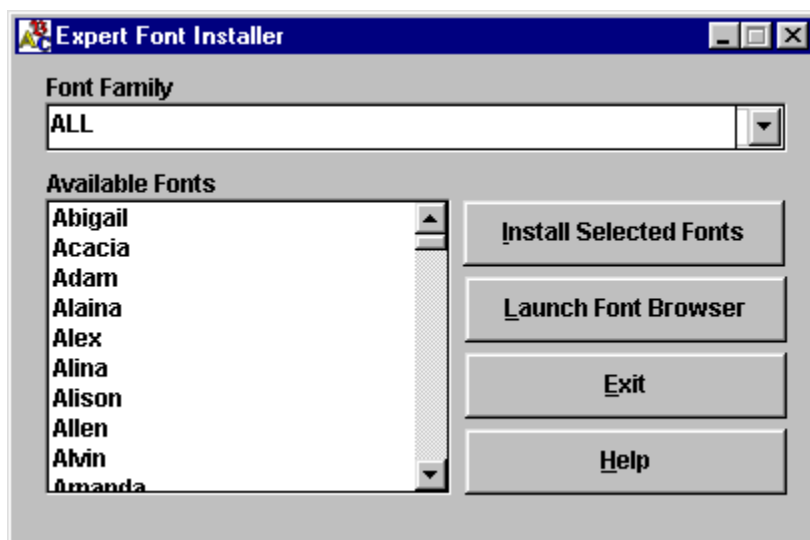
## Fonts Installation

- A
- B
- C
- D
- E
- F
- G
- H
- I
- J
- K
- L
- M
- N
- O
- P
- Q
- R
- S
- T
- U
- V
- W
- X
- Y
- Z

For information on an item, click on it with the mouse when you see the  cursor.

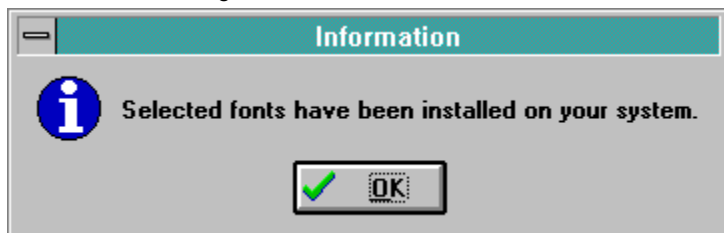
Expert Kids' Fonts includes an easy-to-use font installer. Just click on the drop-down list box and select a Font family. All the fonts available for that family are displayed in the larger box.

When you have chosen the fonts you want to install, select the font and then click on the **Install Selected Font** button.



To make multiple font selections, press the **CTRL** key while you click on the fonts you want to select. If you would like to see an example of the font, click on the **Launch Font Browser** button.

**Please note:** it is recommended that you do NOT have more than 20 fonts installed on your system at one time. Follow the Removing Fonts directions for more information on removing fonts.



**[Windows 95 users: after you have installed the fonts, click on the Fonts icon in Control Panel to update the fonts folder. This should make all fonts visible in application.]**

[Click here to choose a font family.](#)

These are the fonts available for the font families. Font families can have from 1 to 10 fonts.

**Click here to install all the selected fonts to your system. Please refer to Removing Fonts, to remove unwanted fonts from your system.**

**This launches the font browser. The font browser lets you preview the fonts before installing them.**

**This exits from the Font Installer.**



## Font Browser




For information on an item, click on it with the mouse when you see the  cursor.

The Kids' Fonts Browser lets you view the font styles before you load them to your system. It is strongly recommended that you do **NOT** install more than 20 fonts at once.

To see the fonts in a specific category, simply click on the font category tab at the top of the screen. The All Fonts category displays all the fonts available on the CD. Use the **Arrow** buttons to scroll through the fonts in that particular category. Click on the **Quit** button to exit from the Font Browser and return to the Fonts Installer.

<b>Superhero</b>	Fantasy Fonts	Topsy Turvy	Funky Fonts	Toy Fonts	Wacky Fonts
Around the World	Alien Fonts	Rave Fonts	Sugar & Spice Fonts	Creepy Fonts	Back to School




Comix  
 ABCDEFGHIJKLMNOPQRSTUVWXYZabcdefghijklmnopqrstuvwxyz0123456789

ComixHeavy  
**ABCDEFGHIJKLMNOPQRSTUVWXYZ  
 0123456789**

ComixHeavy Italic  
***ABCDEFGHIJKLMNOPQRSTUVWXYZ  
 0123456789***

ComixHighlight  
**ABCDEFGHIJKLMNOPQRSTUVWXYZ  
 0123456789**

ComixHighlight Italic  
***ABCDEFGHIJKLMNOPQRSTUVWXYZ  
 0123456789***



CREDITS

QUIT

This closes the Font Browser and returns to the font installer.

These are the font categories. Click on a category to see an example of fonts in that category. The categories include Alien, Around the World, Creepy, Fantasy, Rave, Back to School, Sugar & Spice, Superhero, Topsy Turvey, Toy, Wacky, and Funky.

Click on these to scroll through the fonts available in the selected category. The list will repeat itself.

## Removing Fonts



**For information on an item, click on it with the mouse when you see the  cursor.**


A typical TrueType font family requires about 5 kilobytes of Random Access Memory for installation. By family, that can mean up to four files: the plain, bold, italic and bold-italic files that correspond to the font styles. If you run Windows on a 386 or higher and have a normal-sized swap file, you should be able to load many fonts without experiencing a major performance penalty.

There is a problem, though: many applications allocate a relatively small amount of memory to hold the names of the fonts. For example, a well known bug in a major word processor has been affectionately called 'the pfont pfunnies.' When you use more than 255 different fonts in your open document(s), the program completely loses track and substitutes one font for another... for another... for another, and so on.

- So for system memory considerations and for applications compatibility, it's sometimes best not to install too many fonts. If you find you need to remove a font or fonts, here's how to do it:
- [Removing fonts in Windows® 3.1](#)
- [Removing fonts in Windows® 95](#)

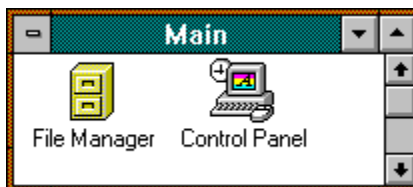
## Windows 3.1



For information on an item, click on it with the mouse when you see the  cursor.

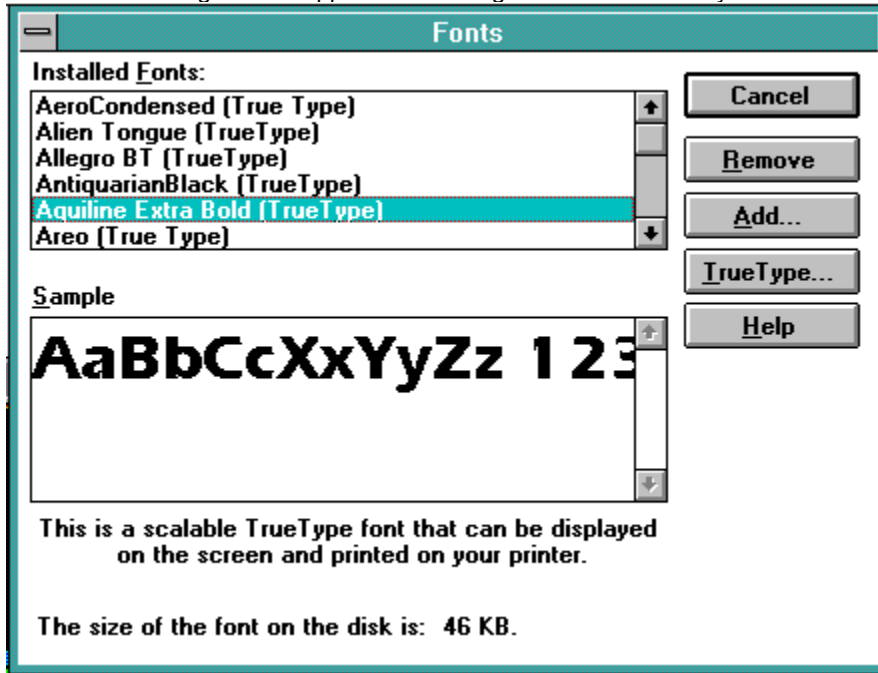
The Fonts dialog box allows you to manage the number of fonts installed on your computer and to remove fonts you no longer wish to use. **Please note:** Do not delete the default Windows fonts.

1. Double-click on the **Control Panel** icon located in your **Main** program group.



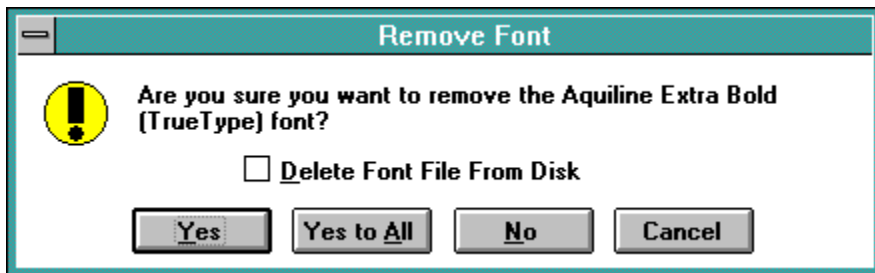
2. Double-click on the Fonts  icon.

3. The Fonts dialog box will appear. This dialog box lists all currently installed font files.



4. Highlight the fonts to be deleted. Use the **CTRL** key on your keyboard to select more than one font to be deleted. All selected fonts will be highlighted. Click on the **Remove** button.

5. The Remove Font dialog box will appear. Click on the **Yes** button to confirm the removal of the selected font. Click on the **Yes to All** button to confirm the removal of all selected fonts. Check the *Delete Font File from Disk* option to remove the font from the hard drive.






## Windows 95



For information on an item, click on it with the mouse when you see the  cursor.

The Fonts dialog box allows you to manage the number of fonts installed on your computer and to remove fonts you no longer wish to use. **Please note:** do not delete the default Windows fonts.

1. On the Taskbar, click on the Start  button.
2. Point to the Settings folder and finally, point to and click on the Control Panels icon.

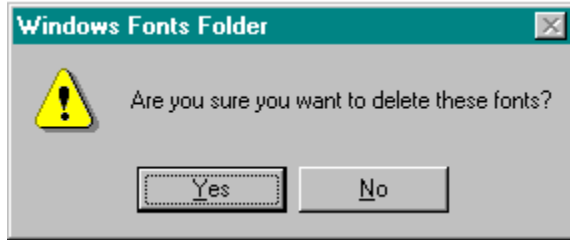


3. In the Control Panel window, double-click on the Fonts Folder icon. The Fonts window will appear. This window lists all currently installed font files.



Fonts

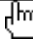
4. Select the Font (or Fonts) to be removed from your system. Choose File-Delete. In the confirmation dialog box, click on the Yes button. The selected font(s) are removed from your system.



5. Click on Yes to confirm the removal of the selected fonts.

## Product Support



**For information on an item, click on it with the mouse when you see the  cursor.**

Your purchase of an Expert product includes free product support to help you get the most out of your software. All Expert products are thoroughly tested and come with a Help File, User's Guide and/or Online Manual. In most cases, the answers to many of your questions are in the Help File, User's Guide and/or Online Manual.

If you are having problems starting or running the program, please feel free to contact us.

### **24 Hour Automated Support**

- Find answers to frequently asked questions on the worldwide web at <http://www.expertsoftware.com>
- Use our Fax Back System for support and product information at (800) 772-5706.

### **E-mail Addresses**

- You can send e-mail to [support@expertsoftware.com](mailto:support@expertsoftware.com) or [sales@expertsoftware.com](mailto:sales@expertsoftware.com)

### **Mailing Address**

- 800 Douglas Road, Suite 750, Coral Gables, FL 33134 or
- P.O. Box 144506, Coral Gables, FL 33114-4506.

### **Telephone Product Support**

Contact a friendly Expert Product Support Specialist Monday through Friday, 9:00AM to 5:00PM EST (Eastern Standard Time). Telephone (305) 567-9996 or fax (305) 569-1350.

If you call, you should be at your computer. Be ready to give the Product Support Specialist the 10-digit program version number from the front of your program disk or back of the CD jewel case, as well as the following information:

***If you have a Macintosh®-compatible computer***

- Please have the model, system software version and amount of memory available.

***If you have Windows®- or MS-DOS®-compatible computer:***

- The version of DOS that is installed on your computer. (You can determine the version by typing VER at the DOS prompt.)
- The version of Windows® installed on your computer.
- The type of hardware you are using:
  - The brand of computer you own,
  - CPU type (80386, 80486, Pentium®),
  - Video type (EGA, VGA, Super VGA),
  - Model and type of video card, and
  - Model and type of printer.
- The exact wording of any messages that appeared on the screen.
- What happened and what you were doing when the problem occurred.

We encourage Windows® 3.x (or MS-DOS 6.x) users who need product support to print an MSD report. Have it available for the Product Support Specialist who answers your call. You will find the MSD (Microsoft Diagnostics) program in either the Windows or the DOS directory.

## Frequently Asked Questions



To select any of the help lessons, click with the mouse when you see the  cursor.

### **Microsoft Works for Windows won't display all my fonts. Why?**

MS Works allocates only 10 kilobytes of RAM for remembering the names of all the fonts installed in the system. If you have many, many fonts, ALL the font names disappears from the font list. The only advice Microsoft offers to users with this problem is to delete fonts you don't use, or copy the fonts to disk and use them only when you need them.

### **None of my fonts show in any of my applications. How can I fix this?**

Most likely the TrueType option is turned off. To check, open the Control Panel, choose the Fonts icon, and select the TrueType button. Be sure there is a check in the 'Enable TrueType Fonts' box. If not, click in the blank square and click on OK. You are then prompted to restart Windows for the changes to take effect.

### **Why do all the fonts look the same?**

Windows normally won't tell you when you have too many fonts being loaded at start-up. However, when loading an excessive amount of fonts from various resources, some fonts might begin to show as the same generic font. When this happens, you have exceeded the amount of fonts (literally hundreds) that

your computer can handle. Delete the fonts you don't use, or store them on disk and use them only when needed.

 **I have installed the TrueType fonts in Windows 95 and I cannot find them in my word processor.**

After you have installed the fonts, click on the Fonts icon in Control Panel to update the fonts folder. This should make all fonts visible in application.

 **I'm having problems with WordPerfect for Windows since I installed fonts.**

WordPerfect offers you a choice of two completely different print drivers. The default is the WordPerfect driver. The WordPerfect driver uses only WP fonts -- not TrueType fonts. To use TrueType fonts with WordPerfect for Windows, you must use the Windows Print driver as configured in the Control Panel under Printers.

## Font List

A  
B  
C  
D  
E  
F  
G  
H  
I  
J  
K  
L  
M  
N  
O  
P  
Q  
R  
S  
T  
U  
V  
W  
X  
Y  
Z

To select any of the help lessons, click with the mouse when you see the  cursor.

This is a list of the font families which are included in Kids' Fonts. To see an example of each of the font families listed, click on the Launch Font Browser button on the Install Font dialog box.

The following is the list of 300 True Type fonts, for both PC and MAC platforms, which will be included in the Expert Kid Fonts CD product. Any changes to this list will be mutually agreed upon by Expert and the Licensor.

5thGrader	5thGrader Bold	5thGrader Bold Italic
5thGrader Italic	Aladdin Italic	Aladdin Regular
AladdinExpanded Italic	AladdinExpanded Regular	Anaconda Regular
AnacondaCondensed Regular	AnacondaExpanded Regular	ArcheryDisplay
ArcheryDisplay Bold	Aristocrat Regular	Arruba
Baratz	Baratz Bold	Baratz Bold Italic
Baratz Italic	BarberPole Regular	BarberPoleItalic Italic
Bedrock Italic	Bedrock Regular	BedrockWide Italic
BedrockWide Regular	Beetlejuice Italic	Beetlejuice Regular
Biggen	BobbyPin Regular	Borderbats-Geo Regular
Braille Regular	CandyStriper	CandyStriper Italic
Carnivale	CasqueOpenFaceWacky	CasqueOpenFaceWacky Bold
ChowMein Regular	ChowMeinNarrow Regular	ChowMeinWide Regular
Christmas Tree Regular	Chubby	Chubby Italic
ChubbyOutline	ChubbyOutline Bold	ChubbyOutline Bold Italic
ChubbyOutline Italic	Coaster Italic	Coaster Regular
CoasterNarrow Italic	CoasterNarrow Regular	Comix Italic
Comix Regular	ComixHeavy Italic	ComixHeavy Regular
ComixHighlight Italic	ComixHighlight Regular	Cow-Spots Italic
Cow-Spots Regular	CrewCutCaps	CrewCutCaps Bold
CrewCutCaps Bold Italic	CrewCutCaps Italic	Cut-n-Paste Regular
Digiface Italic	Digiface Regular	DigifaceWide Italic
DigifaceWide Regular	DingbatsOne Regular	DingbatsTwo Regular
DinnerTime Regular	DoorJamb Regular	EdenDisplay
EdenDisplay Italic	FairyScrollDisplay	FairyScrollDisplay Italic
Fernando Regular	Fingerpaint	Fingerpaint Bold
Fingerpaint Bold Italic	Fingerpaint Italic	FirstGrader Italic
FirstGrader Regular	FlamingDisplayCaps	FlamingDisplayCaps Italic
FlamingDisplayCapsHvy	FlamingDisplayCapsHvy Italic	FractionsRoman
FractionsSans	Frantic Italic	Frantic Regular
Frilly	Frilly Italic	FrillyExtras
FrillyExtras Italic	FunkyFace Regular	FunkyFaceUpright Italic
FunkyFaceUpright Regular	Funstuff Bold	Funstuff Bold Italic
Funstuff Italic	Funstuff Regular	FunstuffXitalic Bold
FunstuffXitalic Regular	FuturistStencil Italic	FuturistStencil Regular
Gaelic Italic	Gaelic Regular	GaelicCondensed Italic
GaelicCondensed Regular	GanglyDisplayCaps	GanglyDisplayCaps Bold
GardenDisplayCaps	Gecko Italic	Gecko Regular
GeckoVertical Regular	GhoulyCaps Regular	GhoulySolid Regular
Graffiti	Graffiti Bold	Graffiti Bold Italic
Graffiti Italic	GremlinCaps	GremlinCaps Bold
GremlinCaps Bold Italic	GremlinCaps Italic	GremlinOutline
Grouse	Grouse Italic	GrunionScript
GrunionScript Bold	GrunionScript Bold Italic	GrunionScript Italic
GummyDisplay	GummyDisplay Italic	Gymnastics Regular
HandStroke Italic	HandStroke Regular	HankyShadow
HankyShadow Italic	Harquil Italic	Harquil Regular
HighNoon Italic	HighNoon Regular	HippieDisplay
IvyDisplayCaps	IvyDisplayCaps Bold	IvyDisplayCaps Bold Italic
IvyDisplayCaps Italic	Japanese	Jellybean
Jellybean Italic	Jolt Italic	Jolt Regular
Jurassic Regular	Keycaps Regular	KingTut Regular
KingTut-Too Regular	KoolKapsDisplay	KoolKapsDisplay Bold
KoolKapsDisplay Bold Italic	KoolKapsDisplay Italic	KoolKapsDisplayHvy
KoolKapsDisplayHvy Bold	KoolKapsDisplayHvy Bold Italic	KoolKapsDisplayHvy Italic
LadyBug Italic	LadyBug Regular	Lariat
LariatLight	Letterman Italic	Letterman Regular
LettermanSolid Italic	LettermanSolid Regular	MagnetiCard
MagnetiCard Italic	MagnetiCardWide	MagnetiCardWide Italic
Mandrel	MandrelOutline	MandrelOutline Bold

Marquee Italic	Marquee Regular	MarqueeEngraved Italic
MarqueeEngraved Regular	MarqueeFlash Italic	MarqueeFlashRegular
MarqueeMieux Italic	MarqueeMieux Regular	Medfly Bold
Medfly Bold Italic	Medfly Regular	MedflyBlack Italic
MedflyBlack Regular	MedflyExtrabold Italic	MedflyExtrabold Regular
MedflyHeavy Italic	MedflyHeavy Regular	MedflyLight Italic
MedflyLight Regular	Mitzvah Regular	Murdock
Murdock Bold	Murdock Bold Italic	Murdock Italic
Needlepoint Regular	New Mexico Regular	Nexus Italic
Nexus Regular	Notehand Bold	Notehand Bold Italic
Notehand Italic	Notehand Regular	NotehandLefty Bold
NotehandLefty Regular	Orient Regular	OrientNarrow Regular
OutHouseDisplayCaps	OutHouseDisplayCaps Italic	PageClips Italic
PageClips Regular	Painter Italic	Painter Regular
PainterNarrow Italic	PainterNarrow Regular	Penstyle
Penstyle Bold	Perdoo	Perdoo Bold
Perdoo Bold Italic	Perdoo Italic	Pipefitter
Pipefitter Bold	Pipefitter Bold Italic	Pipefitter Italic
PixelPoint Regular	Placard	PlanksDisplayCaps
PlanksDisplayCaps Bold	PlanksDisplayCaps Bold Italic	PlanksDisplayCaps Italic
PlayingCards Regular	PookyDisplay	PookyDisplay Italic
PookyDisplayBS	Prawn Handwrite Regular	Pyxid Regular
PyxidQuick Regular	QuarkNeon Italic	QuarkNeon Regular
Ribbons Regular	Rodeo	Rubiks
Rubiks Italic	SecondGrader Italic	SecondGrader Regular
Shower	Shower Bold	Shower Bold Italic
Shower Italic	SnowtopCaps Regular	Starburst
Starburst Italic	StarsCaps	StarsCaps Italic
StarsCapsHeavy	StarsCapsHeavy Italic	Stencil Regular
Stinger Regular	StingerShadow Regular	StriperBoldCaps
StriperBoldCaps Italic	StriperCaps	StriperCaps Italic
Sunbelt	Sunbelt Italic	SundownDisplayCaps
SundownDisplayWide	SwissCheese Italic	SwissCheese Regular
TokyoCaps	TokyoCaps Rough	Trains Regular
TravellerScript	TypewriterRough	TypewriterRough Italic
Urkle	Urkle Italic	VinylCaps
VinylCaps Italic	VinylCapsHeavy	VinylCapsHeavy Italic
WeirdoWarp Regular	WildWest Regular	Wizzard
Wobbles	Wobbles Italic	WolfgangCaps
WolfgangCaps Bold	WolfgangCaps Bold Italic	WolfgangCaps Italic

## Credits and Trademarks

**Product Manager: Susan Azpurua**

**Quality Assurance: George L. Moneo, Patty Fuquen, Rick Haylock, Manny Perez, and Sean Pereira**

**Documentation Layout: Rebecca A. Ergen**

**Art Department: Greg Lampkin, Noel Fung, Omar Rodriguez, Glen Milan, Enrique Saldarriaga**

© 1996 Expert Software Inc. The Expert Brand logo and Kids' Fonts are Trademarks of Expert Software, Inc. Digital font outline data licensed from Weatherly System, Inc. © 1996. All Rights Reserved Worldwide.



## How to use Expert Help



**To select any of the help lessons, click with the mouse when you see the  cursor.**

Expert help uses a visual system for providing you with information on the different screens and features of this program.




To obtain help on any topic, click on the **Help** menu from anywhere in the program or on the



icon. Doing so brings up the appropriate help topic for the current screen that you are on.



Most of the major screens and dialog boxes in this program are reproduced in miniature form in this help file. As you pass the mouse cursor over the image, the arrow-pointer changes to the shape of a hand  indicating that you can click on that area. (This is called a “hotspot.”) For information on any field, button, hotspot, or feature, simply click on the area you are interested in and a pop-up description appears or it jumps you to that specific topic. Occasionally, you see the Expert “X” (



) in some portions of the help file preceded by “click here;” it will be a jump to another topic or location in the help file.



The pop-up or jump description may consist of up to 3 parts. They include:  
Definition and/or general information about the item you have selected.

Action to take. Any instructions or options available for the topic.

A link (usually in **green**) to a related topic. If further information is available for the item you have selected, the link will take you to the new topic of interest.



Another way of quickly accessing information for a particular topic is through the use of the glossary buttons located in the non-scrolling region at the top of every help screen. Clicking on each letter provides you with a quick alphabetized index listing in a pop-up box.

**A**

Available Fonts

**B**

**No topics available.**

**C**  
Contents  
Credits

**D**

**No topics available.**

**E**

**Exit**

**Expert Help**

## **F**

[Font Browser](#)

[Font Categories](#)

[Font List](#)

[Font Installation](#)

[Frequently Asked Questions](#)



**G**

**No topics available.**

**H**

**No topics available.**

|

**Install Selected Fonts**

**J**

**No topics available.**

**K**

**No topics available.**

**L**

**Launch Font Browser**

**M**

**No topics available.**

**N**

**No topics available.**



0

No topics available.

**P**

**Product Support**

**Q**  
**Quit**

**R**

[Removing Fonts](#)

## **S**

### **Scrolling Arrows**

**T**

**No topics available.**

**U**

**No topics available.**

**V**

**No topics available.**



## **W**

[Windows 3.1](#)

[Windows 95](#)

**X**

**No topics available.**

**Y**

**No topics available.**

**Z**

**No topics available.**



