



Explorer98 - Overview

Explorer98 v.1.1: File Manager for Windows95...

Une version française existe aussi. Le nom du programme d'installation est EXP98FR.EXE.
(Le code d'accès est le même pour la version Française et Américaine).



Explorer98 is a free trial program (or Shareware).

You are invited to try it and introduce it to your friends and acquaintances.

However, if you do use it, you must register as a user. You will then receive a registration number which will enable you to disable the "Trial Version" window.

[About Explorer98](#)

Explorer98 combines the qualities of Norton Commander and Microsoft Winfile (under Windows 3.xx).

**Two window display, Toolbar, Drive bar, Folder Comparison, Folder Printing, Viewer bmp, gif, pcx, ico, jpg, png, tif, wmf, doc, wri, txt, with html as an option),...
Original view, text, hexa, etc...**

ALL THE FUNCTIONS of Microsoft Explorer are maintained (Speed, Context-sensitive menus, Drag and Drop etc).

Zip compression/decompression development is underway and will be freely available to registered users.

You also benefit from:

- ▶ [Main characteristics](#)
- ▶ [Special features](#)
- ▶ [Keyboard commands](#)
- ▶ [Assistance](#)

Why and how to order ?

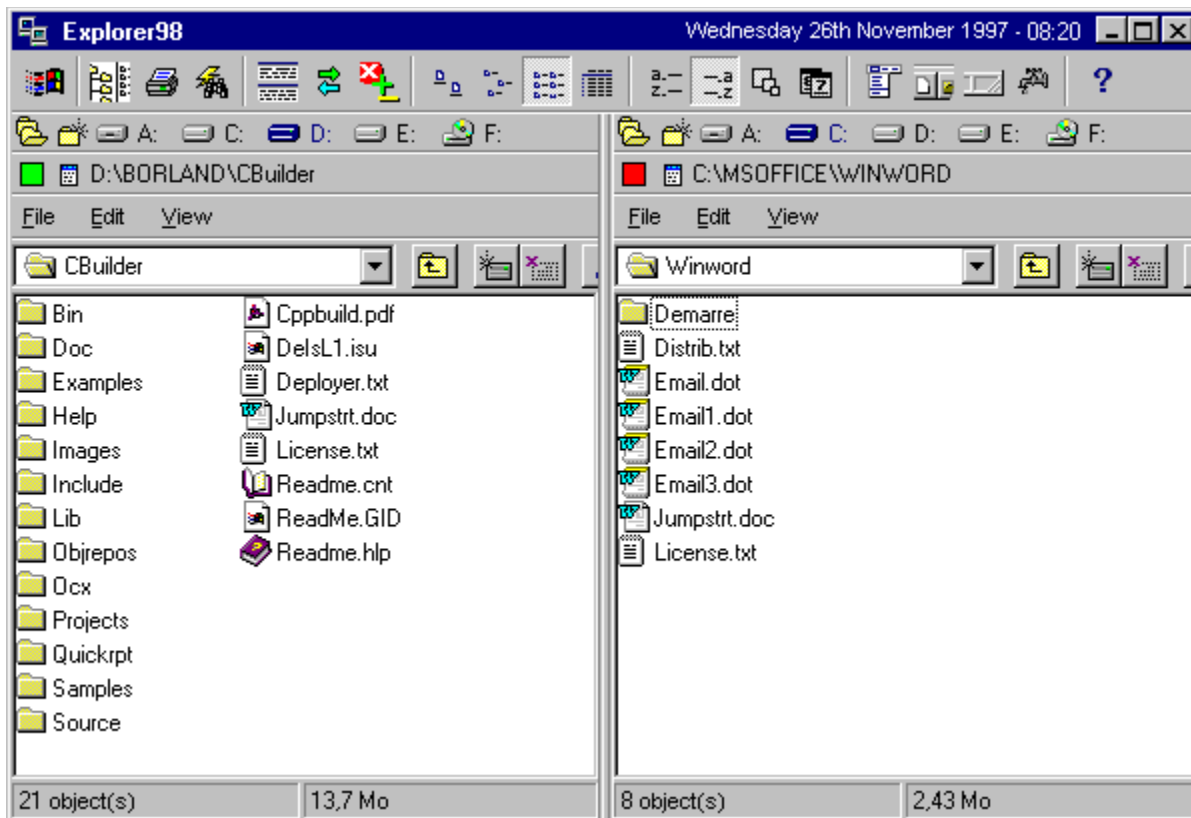
- ▶ [How to order ?](#)
- ▶ [Copyright/License/Warranty](#)
- ▶ [What is Shareware](#)
- ▶ [Uninstallation](#)

All products or trade names used in this documentation are registered trademarks, copyright to their respective owners.

The Explorer98 program is registered with the "Agence pour la Protection des Programmes" under

the number IDDN.FR.001.470014.00.R.C.1997.000.10800.

Explorer98 © Christian Maufroy - 1997 - IDDN.FR.001.470014.00.R.C.1997.000.10800



Main Characteristics

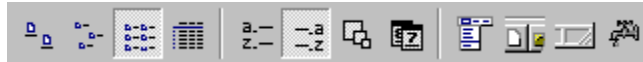


[Tree Structure + drives list available...](#)



[Double windows + drives list available...](#)

Vertical or Horizontal split screen display



- Display, Rearrange, Menus, Status bar, simultaneously refreshing of both displayed windows



[Print Folders...](#)



[View files in original format, text or hexadecimal...](#)

Image files BMP, PCX, GIF, ICO, JPG, PNG, TIF, WMF
----- TXT, DOC, WRI...

Options : Zoom, Copy, Print, Save.



[Switch position of window displays \(left/right, up/down\)](#)



[Compare Folders...](#)



[Folder browse for each window...](#)



[New Folder or Shortcut...](#)



[File search for each window...](#)



[20 last paths used for the current window.](#)



[Format disk - directly accessible from menu](#)



[Copy disk -----](#)

- Save configuration (size, location, files, etc.)
- Dynamic saving of the file changes which enables you to go to the previous or next files



[System options...](#)



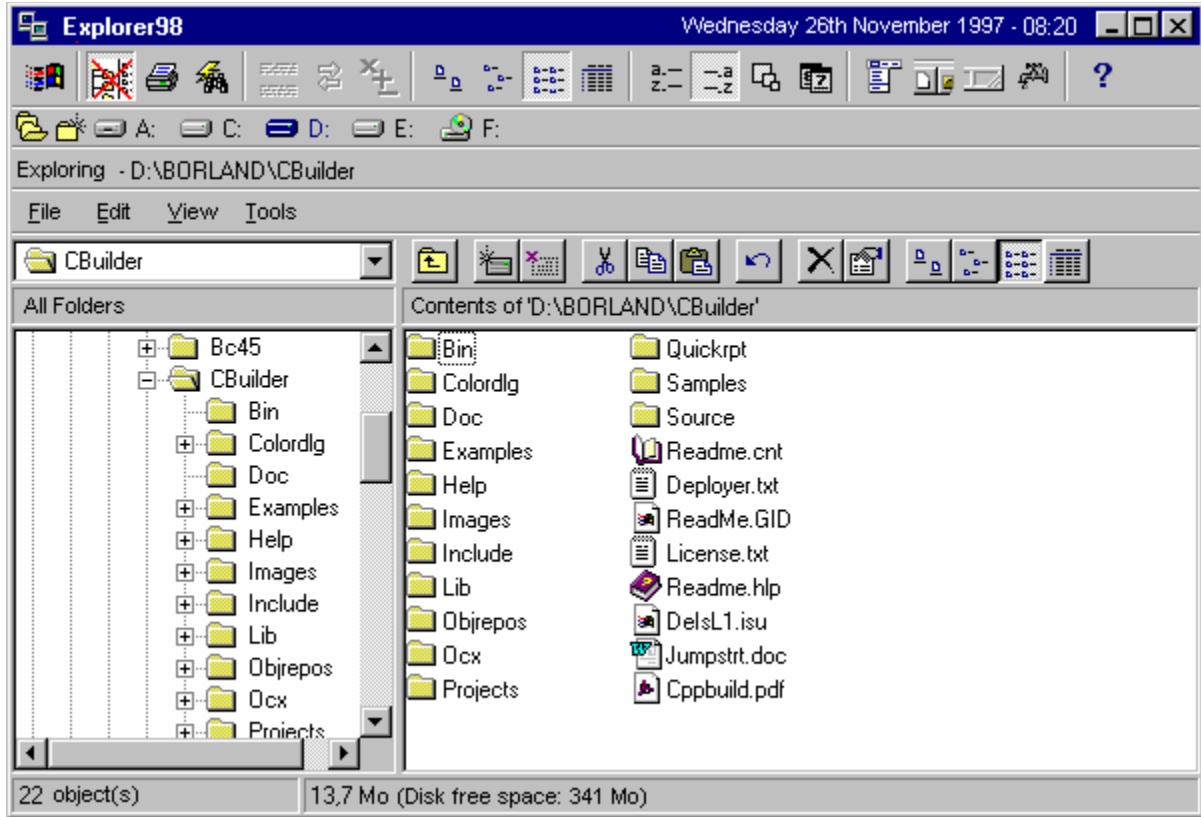
[Main menu...](#)



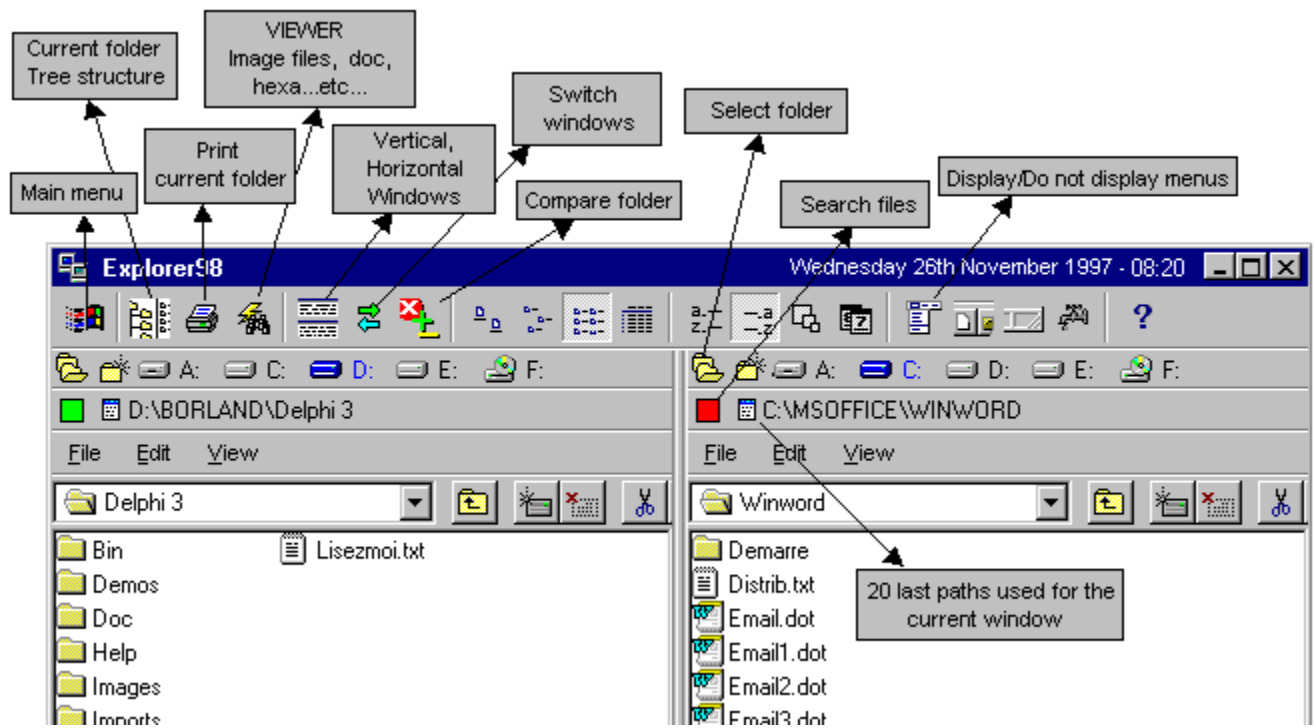
[Task bar menu...](#)

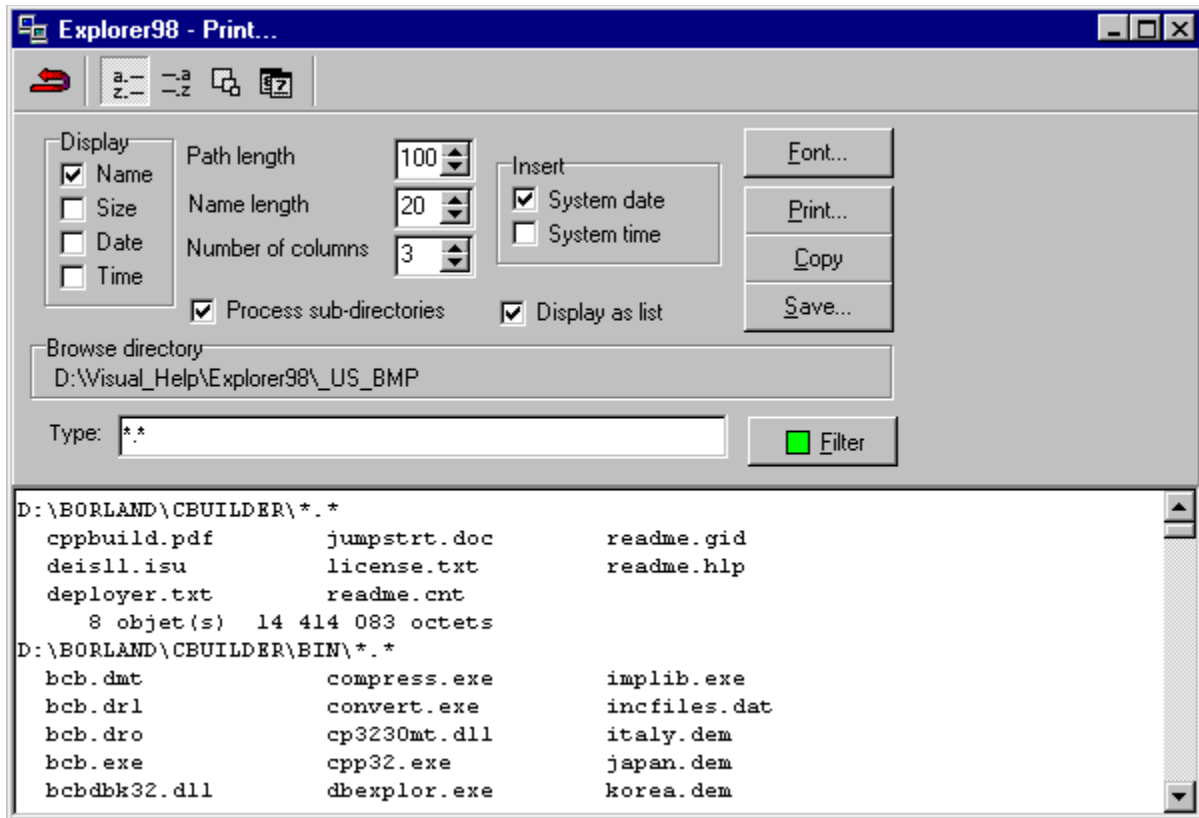


[Help menu...](#)



Barre des lecteurs présents...





- Printing of files from a folder with sort by name, type, size, date and file filter options, etc...

**FAST VIEW
For Explorer98**

Explorer98 - FastView original txt hex
D:\BORLAND\Tec

| | |
|-----------|----------|
| 00000000: | 42 4D 00 |
| 00000008: | 00 00 00 |
| 00000016: | 84 00 00 |
| 00000021: | 00 60 50 |
| 0000002C: | 00 00 10 |
| 00000037: | 00 00 00 |

Save...
Copy
Print...
Maximize
Close

Explorer98 - FastView original txt hex
C:\WINDOWS\Bind List Log.txt

Date: 01/30/1998 (mm/dd/yyyy) Time: 15:03:53 (hh:mm:ss)
Logging information for Bindfile.dll...

Inf Name = C:\WINDOWS\SYSTEM\ie4files.inf
Section Name = ie4files
Bind Dir = C:\WINDOWS\SYSTEM\...
Quiet Mode = 1
Delete Section = 1

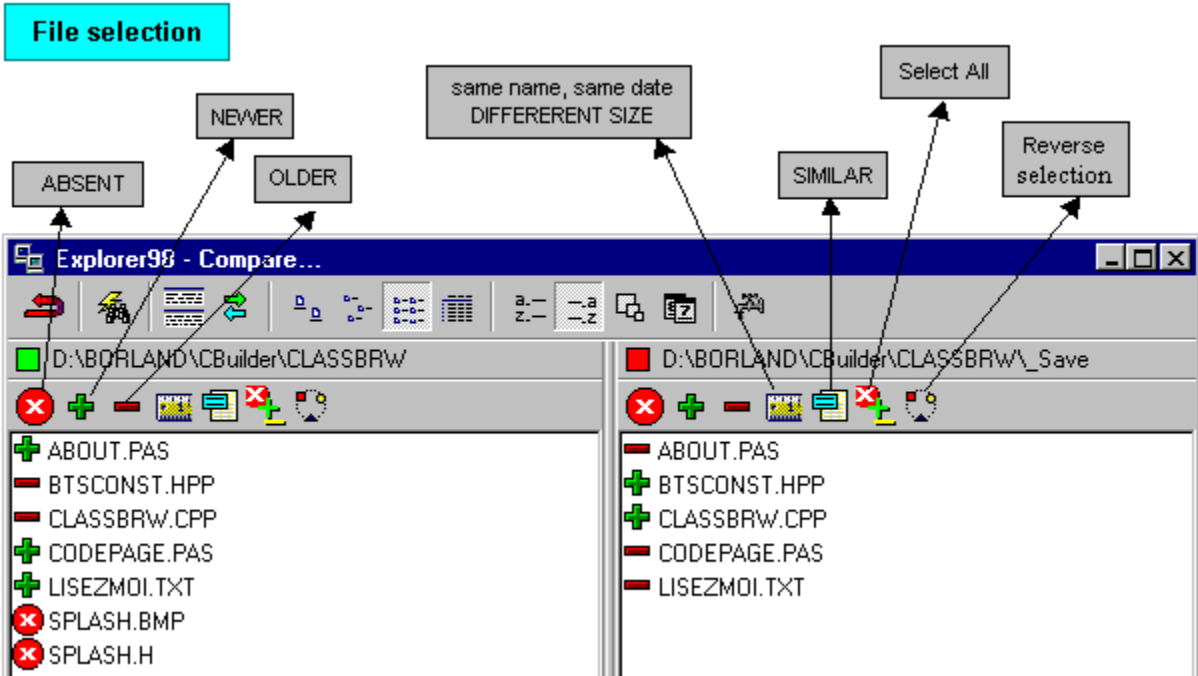
Preparing to...
Line 0: Mapping C:\WINDOWS\...
Line 1: Mapping C:\WINDOWS\...
28 257 octets - 30/01/98 15:03

Copy
Select all
Print...
Maximize
Close

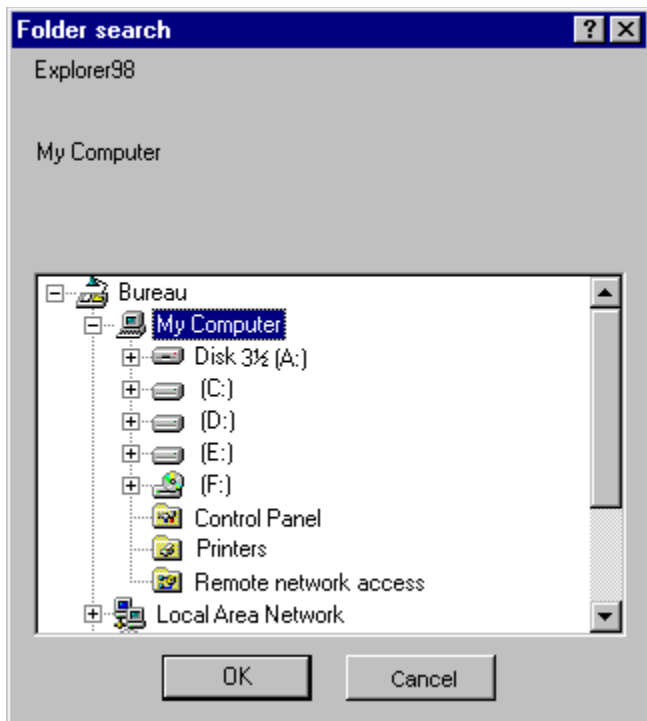
Explorer98 - FastView original txt hex
Technlgy.bmp
W=240/H=180

Copy
Original
✓ Homocentric
Stretched
Maximize
Close

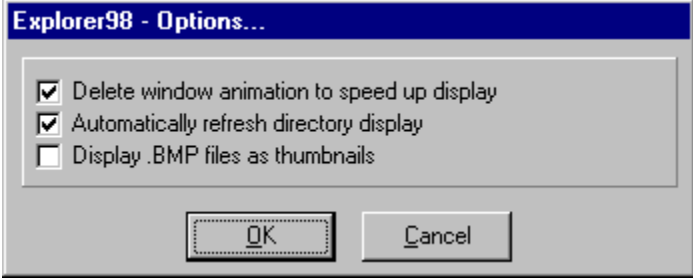
- Sizeable window
- Click right button to open context-sensitive menus
- Double click to change the window from normal to full screen mode

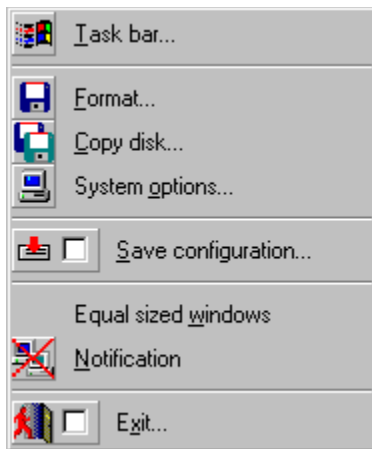


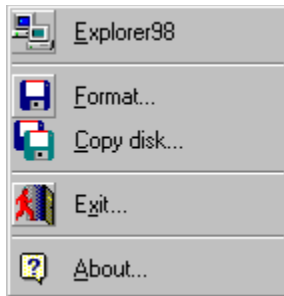
- Folder comparison showing Absent, Newer, Older, and Similar files, as well as files with the same name, date but differing size, and with option to Sort by name, type, size, date and File filter, etc...















-  [Help Contents](#)
-  [Order form...](#)
-  [Registration...](#)

-  [About...](#)

Special features



- Main Toolbar

Main context-sensitive menu...

Save/Restore different configurations :
- Right click on the Main Toolbar open a context-sensitive menu which allows you to Add/Replace/Modify the paths of the two folders in use.



- Title bar

Left or right context-sensitive menu...

Save/Restore different configurations :
- Right click on the left or right Title Bar open a context-sensitive menu which allows you to Add/Replace/Modify the path of the folder in use.

- The menus are saved automatically when closing the application.

- It is possible to change the file by dragging the title of a window, a folder or a file onto the title of another window.



- Drive Bar

Free space...

Right click on the Drive Bar display free space



Click on one of the opposite icons:
+ CTRL resizes the windows to the same size.
+ SHIFT displays one window only.





FastView Viewer:
- The windows position and size are saved automatically.
- You can Drag and Drop from a window outside Explorer98.
- In Image or Hexa mode, keeping the left mouse button depressed while on the window enables you to move it.
-----, a double click on the FastView window toggles from normal mode to full

screen.


- In Hexa mode, starting from the current position, only 100 lines can be copied, printed or saved.

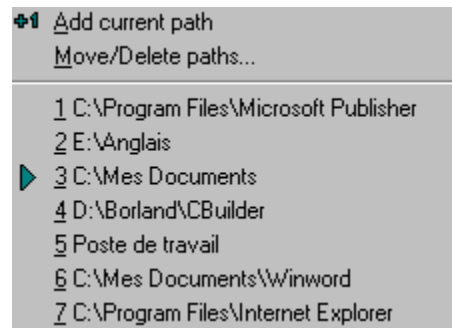
- The parameters used for folder comparison, folder printing and the FastView viewer are only retained for the current session. They are not saved during configuration saving.

 Add current paths
Move/Delete paths...


1 C:\Program Files\Internet Explorer C:\Program Files\CompuServe
 2 D:\DYNAZIP2\CSOURCE C:\Multimedia Files\Music\Interactive Music
3 D:\BORLAND\CBuilder C:\MSOFFICE

7 configurations can be saved.

 This mark shows the last folder browsed.



7 configurations can be saved.

 This mark shows the last folder browsed.

| Free Space | | | |
|------------|-----|------------|--------------|
| 0% | A:\ | 0 Kb | 0 Kb |
| 25% | C:\ | 534 976 Kb | 2 096 160 Kb |
| 8% | D:\ | 174 912 Kb | 2 096 160 Kb |
| 14% | E:\ | 305 952 Kb | 2 096 160 Kb |
| 0% | F:\ | 0 Kb | 141 408 Kb |
| 0% | G:\ | 0 Kb | 0 Kb |

| Free Space | | | |
|------------|-----|--------|----------|
| 0% | A:\ | 0 Mb | 0 Mb |
| 25% | C:\ | 522 Mb | 2 047 Mb |
| 8% | D:\ | 170 Mb | 2 047 Mb |
| 14% | E:\ | 298 Mb | 2 047 Mb |
| 0% | F:\ | 0 Mb | 138 Mb |
| 0% | G:\ | 0 Mb | 0 Mb |

Right click on the menu to toggle Kb/Mb

Keyboard commands

| | |
|--------------------|--|
| F2 | Change the name of the selected file or folder |
| F3 | Search for a file or folder |
| F5 | Refresh the contents of the current folder |
| F6 | Toggle between Status bar and window |
| ALT + ENTER | |
| (ALT+Double Click) | Display properties of selected file or folder |
| CTRL + A | Select All |
| BACKSPACE | Activate the parent folder |
| MAJ + Drag | Force a move |
| CTRL + Drag | Force a copy |
| CTRL + MAJ + Drag | Create a shortcut |
| Right Click + Drag | Cancel the current action |

Assistance

E.mail: cmaufroy@compuserve.com
<http://www.cmaufroy.com>

Christian Maufroy
112 avenue Berthelot
69007 Lyon
FRANCE

To get quick assistance on Explorer98 contact me by e-mail giving as much background information as possible.

Any comments or suggestions for future versions of Explorer98 will be welcome.

Check the following Web site for the latest releases of Explorer98.

<http://www.cmaufroy.com>

Why and how to order ?

Explorer98 is not free although you are allowed to use it without any charge for up to 30 days. After this trial period Explorer98 will no longer operate.

However if you do use it, you must register as a user. A registration number will enable you to use the complete version of Explorer98 and future updates that are currently in production (Zip compression/decompression development is underway and will be freely available to registered users).

You also benefit from reduced prices on future versions.

If you order two licenses you will make a saving of nearly 25 %, so tell your friends and acquaintances.

All orders are subject to the license agreement.

[License](#)

Ordering by Check

Checks must be in an international format as detailed on the order form.

[Order Form](#)

Compuserve registration

To have the registration fee added to your Compuserve bill, use the command GO SWREG and follow the instructions.

The Explorer98 ID is 16518

ShareIt registration: online on the Internet, via phone, fax, or postal mail

Credit cards are the fastest and cheapest way. We accept Visa, Mastercard, American Express and Diners Club. The credit card validation is handled by ShareIt!

You can do the registration online on the Internet at:

<http://www.shareit.com/programs/101091.htm>

Alternatively, you can enter the program number 101091 at:

<http://www.shareit.com>

If you do not have access to the Internet, you can register via phone, fax or postal mail at:

[ShareIt Order Form](#)

Copyright/License/Warranty

This software is protected by copyright and International conventions.

Warning concerning the REGISTERED VERSION of Explorer98. Any reproduction or distribution of this software, whether partially or totally, by any means whatsoever, is strictly forbidden. Any person failing to respect this ruling will be liable to court action and the penalties laid down by law.

C.Maufroy grants you this user license for Explorer98 for your personal use, on condition that you accept the terms of this agreement.

The software covered by this license is the property of C.Maufroy and is protected by International copyright. (Explorer98 has been registered in the directory of the "Agence pour la Protection des Programmes" under the number: IDDN.FR.001.470014.00.R.C.1997.000.10800).

License Agreement

You should carefully read the following terms and conditions before using this software. Unless you have a different license agreement signed by C.Maufroy your use of this software indicates your acceptance of this license agreement and warranty.

One registered copy of Explorer98 may either be used by a single person who uses the software personally on one or more computers, or installed on a single workstation used nonsimultaneously by multiple people, but not both.

You may access the registered version of Explorer98 through a network, provided that you have obtained individual licenses for the software covering all workstations that will access the software through the network. For instance, if 8 different workstations will access Explorer98 on the network, each workstation must have its own Explorer98 license, regardless of whether they use Explorer98 at different times or concurrently.

Distribution

Provided that you verify that you are distributing the evaluation version (select About from the Explorer98 Help menu to check) you are hereby licensed to make as many copies of the evaluation version of this software and documentation as you wish; give exact copies of the original evaluation version to anyone; and distribute the evaluation version of the software and documentation in its unmodified form via electronic means. There is no charge for any of the above.

You are specifically prohibited from charging, or requesting donations, for any such copies, however made; and from distributing the software and/or documentation with other products (commercial or otherwise) without prior written permission.

Disclaimer of Warranty

THE EXPLORER98 SOFTWARE IS PROVIDED "AS IS" WITHOUT WARRANTY OF ANY KIND, EITHER EXPRESSED OR IMPLIED. THIS INCLUDES, BUT IS NOT LIMITED TO MERCHANTABILITY AND FITNESS FOR A PARTICULAR FUNCTION. THE ENTIRE RISK RELATED TO PRODUCT PERFORMANCE OR QUALITY IS ASSUMED BY THE USER. IN THE UNLIKELY EVENT A DEFECT IS DISCOVERED, YOU ASSUME THE ENTIRE COST OF ANY REMEDIAL ACTION.

C.Maufroy does not warrant Explorer98 will meet your requirements or that the programs will function in an uninterrupted and error free manor.

Explorer98 © Christian Maufroy - 1997 - IDDN.FR.001.470014.00.R.C.1997.000.10800

Please print this order form or reproduce it and send it to :

Christian .Maufroy - 112 avenue Berthelot - 69007 - Lyon - FRANCE

Please provide me with the license/s of the software EXPLORER98.

| Quantity | US price |
|--------------|--|
| 1 | \$29 |
| 2 à 9 | \$22 Think of your friends !... |
| 10 à 24 | \$17 |
| 25 à 49 | \$14 |
| 50 à 100 | \$10 |

Total order \$.....

Order by check:

To order by check please send this order form and a check to Christian Maufroy.

Payment must be:

- International postal money orders,
- or Travelers check (American Express, Thomas Cook, Citicorp, Visa,...)
- or Eurochèque
- or Postal check

CLASSIC CHECKS ARE NOT ACCEPTED

My address is:

Company:

Name:

Address:

.....

.....

City, State, Zip:

Country:

Day Phone: Fax:

E.mail:

Comments:

ShareIt Order Form

Registration fee: \$32

Please print out the following form, and fax or mail it to:

| |
|--|
| Reimold&Schumann Internet Services ShareIt! Habsburgerring 3 50674 Koeln Germany Phone: +49-221-2407279 Fax: +49-221-2407278 E-Mail: register@shareit.com |
|--|

| |
|---|
| We are now also officially incorporated in the USA! If you are located in the US, you can now also send a check to the following address: ShareIt! Inc. P.O. Box 97841 Pittsburgh, PA 15227-0241 U.S.A. |
|---|

Registration form for Explorer98

Program No.: 101091

Last name: _____
First name: _____
Company: _____
Street and #: _____
City, State, postal code: _____
Country: _____
Phone: _____
Fax: _____
E-Mail: _____

How would like to receive the registration key/full version?

e-mail - fax - postal mail

How would you like to pay the registration fee of \$32:

credit card - wire transfer - EuroCheque - cash

Credit card information (if applicable)

Credit card: Visa - Eurocard/Mastercard - American Express - Diners Club

Card holder: _____

Card No.: _____

Date of Expiration : _____

Date / Signature _____

What is Shareware

Shareware is a marketing method, not a type of software or even strictly just a distribution method. When software is marketed through normal retail channels, you are forced to pay for the product before you've even seen it. The Shareware marketing method lets you try a program before you buy it. Since you've tried the program, you know whether it will meet your needs before you pay it. A Shareware program is just like a program you find in major stores, catalogs, and other places where software is purchased; except you get to use it, on your own computer, before paying for it.

Why Pay for Software I Already Have ?

Basically, for the same reason you should pay for any program: because it is the honest thing to do. Shareware is commercial software, fully protected by copyright laws. Like other business owners, shareware authors expect to earn money for making their software available. In addition, by paying you may then be entitled to additional functions, removal of time limiting or limits on use, removal of so-called "nag" screens, and other things as defined in the documentation provided by the program's author.

Uninstallation

The base register and the system files have not been modified when installing Explorer98. To uninstall Explorer98 simply delete the folder that you have chosen during installation as well as the keyboard shortcuts that you may have created.

Explorer98 © Christian Maufroy - 1997 - IDDN.FR.001.470014.00.R.C.1997.000.10800

Association Of Shareware Professionals

Nous adhérons pleinement aux règles d'or du shareware, telles qu'édictées par l'ASP, ou Association of ShareWare Professionals.

Le shareware, c'est une méthode de distribution des logiciels, pas un type de logiciel.

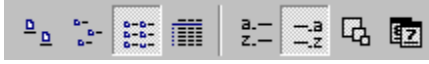
Si vous utilisez régulièrement certains logiciels, après la période légale d'essai, vous devez impérativement verser la contribution réclamée par l'auteur. Vous en tirerez logiquement certains avantages supplémentaires, selon le logiciel, tels que : documentation imprimée, mise à jour envoyée directement par l'auteur, et caetera.

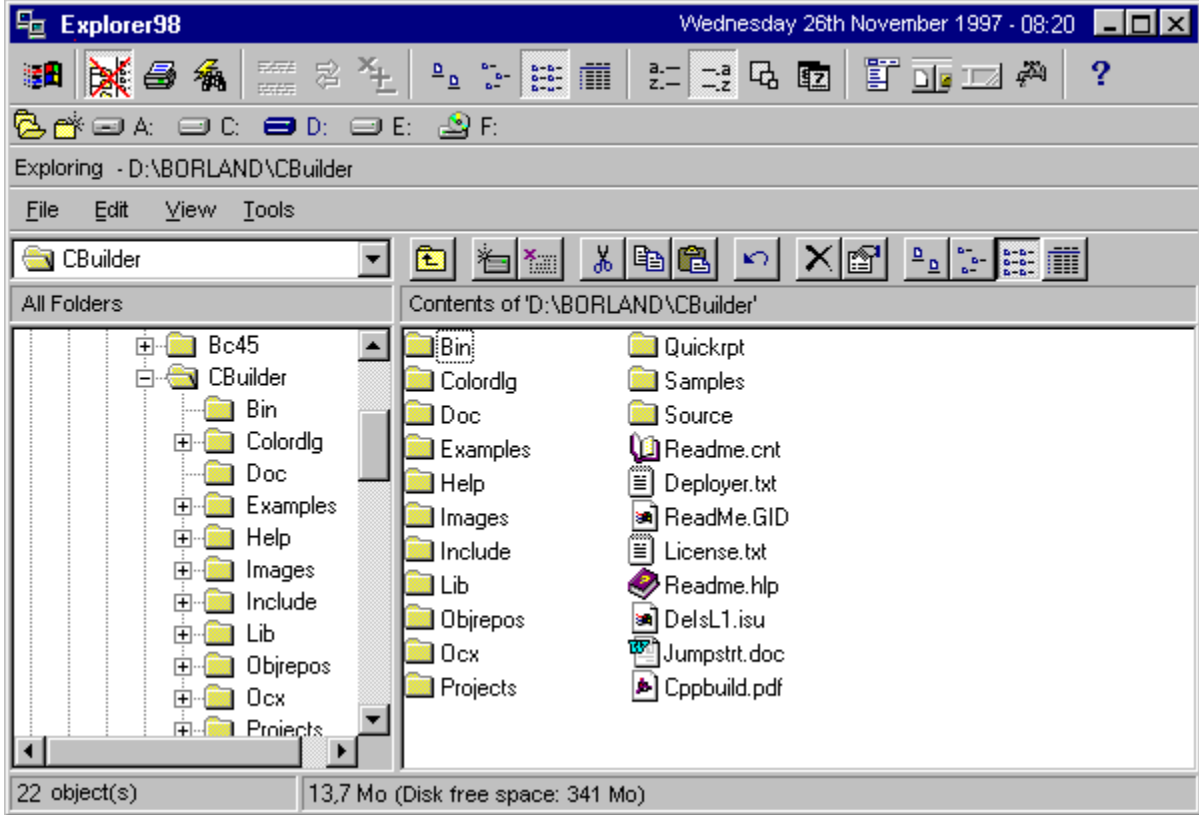
En 1987, pour pallier l'absence de normes dans le monde du shareware, certains auteurs américains éminents ont fondé l'Association of Shareware Professionals, qui a mis sur pied un code éthique du shareware. Les objectifs principaux de ce code étaient les suivants :

- former le public au principe mercatique du shareware (Try before you buy - Essayez avant d'acheter) ;
- établir un standard d'excellence auquel le travail de programmation, de mise sur le marché, et de suivi technique des membres devait obligatoirement répondre.
- encourager le développement du concept du shareware par des groupements d'utilisateurs et des distributeurs acceptant d'en expliquer la nature.
- aider ses membres à diffuser leurs productions.
- créer un forum de communications réservé aux membres. Ce forum a, entre autres, une existence électronique sur le réseau CompuServe.

Ainsi, le label ASP, vous donne la garantie que le programme auquel il est attribué n'est en aucun cas une version bridée, ou limitée de quelque façon que ce soit. L'auteur est tenu d'accuser réception du paiement de votre licence d'utilisation, et de vous assurer une assistance technique de 90 jours.




HintAbout







HintDrive


A: C: D: E: F:

-  [Help Contents](#)
-  [Order form...](#)
-  [Registration...](#)

-  [About...](#)

Inverser les fenêtres

 gauche/droite


 haut/bas

- Enregistrer la configuration effectuée le traitement ci-dessus et sauvegarder aussi les diverses options en cours (emplacement et taille de fenêtres, chemin des dossiers, options d'affichage, de tri, etc...


Tri par


a.-
z.- Nom

-a
-z Type

 Taille

 Date

 Afficher ou non la Barre d'outils des deux fenêtres

 Afficher ou non la Barre d'état des deux fenêtres

 Réactualiser les fenêtres



Vue Arbre


Retour à la fenêtre principale

Présentation des fenêtres


 horizontales

 verticales

Affichage

 Grandes icônes

 Petites icônes

 Liste

 Détails



Ouvrir la barre de tâches



SWREG

Pour accéder au service Shareware Registration de CompuServe, tapez GO SWREG puis suivez les instructions...

Le numéro d'enregistrement d'Explorer98 est le 16518.

Explorer98 © Christian Maufroy - 1997 - IDDN.FR.001.470014.00.R.C.1997.000.10800

SWREG

To access the CompuServe Shareware Registration, type GO SWREG and follow the instructions...
Explorer98 register number is 16518.

Explorer98 © Christian Maufroy - 1997 - IDDN.FR.001.470014.00.R.C.1997.000.10800

Topic1

TopicInitWindow

[Sommaire](#)

[HintSort](#)

[HintTree](#)

[SWREG - Popup](#)

[HintVertHoriz](#)

[HintInverse](#)

