

What Is ExCon?

ExCon makes Windows Explorer easier and more efficient to use, by adding useful features to the context menu (the menu that is displayed by right-clicking an object in Explorer.) I've found each of the added features to be highly useful under a variety of circumstances. Each provides a fast way to do something that might otherwise be tedious, and/or require several steps.

ExCon is a shell extension that can add up to four context menu items, depending upon the way you configure ExCon and upon the type of object for which a context menu is retrieved. The table below lists the possible menu additions, and their applicability:

Menu Item	Added to Files' context menu	Added to Folders' context menu	Uses multiple selections
Copy File Name[s]	Yes	Yes	Yes
Open with Notepad	Yes	No	Yes
Console Here	No	Yes	No
On the Fly	Yes	No	No

(Related topics: [ExCon Menu Items](#); [Why Use ExCon?](#); [ExCon Configuration](#))

Why use ExCon?

The following describes some of the situations under which each of the ExCon features may be useful, convenient or time-saving:

Why use Copy File Name[s]

You find a file or directory, using Explorer and/or the Find File tool. Now you need the name of it, to enter into the File Open dialog, as an argument on a command line, etc. Which is more of a drag: typing it in by hand, or navigating through the directory tree to find it a second time? Even worse, if you need to change to a directory from a console prompt -- ugh, that can be painful!

Why use Open w/Notepad?

Generic Need: You want to view a file with a simple text viewer/editor.

Scenario 1:

It doesn't already have a registered handler, and you don't want to go through the Open As... drill, scroll down ten times to find and execute notepad -- plus you have no desire to register it's type as yet another that is handled by notepad.

Scenario 2:

It doesn't have an extension (e.g., README) so you can't register it's type as yet another that is handled by notepad.

Scenario 3:

It does have a handler, but want don't want to use that handler. Either the file was created by an app other than the registered handler using the same extension, it has become corrupted, you're merely curious, or for whatever reason: you want to see inside the file.

Why use Exexutive Control On The Fly?

You need to pass command line arguments to a program when starting it, and/or you want the console window to stick around for a bit after an app is executed, so you can see the results.

Why use Console Here?

You need to open a console window (aka, DOS window) and change the current working directory to one you have located using Explorer.

ExCon Menu Items

ExCon's Configuration utility allows you to choose which, of the items below, will be added to context menus.

Copy File Name[s]

Copys the full path name of the selected objects to the clip board. If there multiple objects are selected when Copy File Name[s] is invoked, it copies the names of all selected objects. It can be configured to delimit the names with commas or semi-colons, and/or new lines, and/or each name can be enclosed in double-quotes. The order of the items is determined by the system.

(Related topics: [A note about multiple selections.](#))

Open with Notepad...

This feature provides a quick and easy way to open any file with Notepad. If multiple files are selected, the user is prompted to confirm the action, and each selected file is opened with a separate instance of Notepad.

(Related topics: [A note about multiple selections.](#))

Console Here

Opens a console prompt (aka, a DOS window) and sets the current working directory to correspond with the folder item that was right-clicked.

Executive Control...

Provides a pop-up way to pass command line arguments to a program when executing it. The program can optionally be opened in a console window that will remain open after the program terminates, preserving any output returned.

(Related topics:
[Executive Control On the Fly](#), user interface map.)

A note about multiple selections

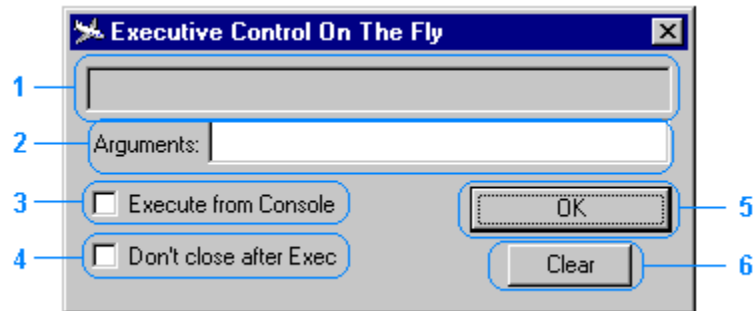
When multiple objects are selected, a context menu is retrieved by right-clicking on one of the selected items. It is this item that is passed to a shell extension first, and as such it is this item that determines ExCon's behavior: If that item is a file, menu items applicable to files are displayed; likewise if that item is a folder.

Two of ExCon's menu items (Console Here and Executive Control) are applicable to a single item only, and are invoked using the item that was right-clicked, regardless of the number of selected items.

One ExCon menu item (Copy File Name[s]) is displayed for both files and folders, and works identically for either -- mixed types within a selection are of no consequence in this case.

The remaining ExCon item (Open with Notepad) is displayed only if the item that is right-clicked is a file. If multiple items are selected, and both files and folders are included in that selection, folders are ignored; only the selected files are opened with Notepad.

Executive Control On the Fly User Interface Map



1. Command to Execute
2. Argument input
3. Execute from Console Option
4. Don't close after Exec
5. Ok push button
6. Clear pushbutton

Command to Execute

The file name to be executed as a command. This control is read-only, filled either by ExCon when this dialog is displayed, or by drag and drop when it is already open. (This control is a drop target.)

Argument input

Enter any command line arguments you wish to pass to the command to execute in this control. You may also drop a file into this control, if you wish to use the name of that file as an argument to the command to execute. (This control is a drop target.)

Execute from Console Option

If this option is selected, the command is executed from under a console prompt. The console window remains open after the command execution completes. This can be useful when running applications that generate text output (for example, a list of required arguments) as it saves you from needing to open a console window and then manually execute the command.

Don't close after Exec

If selected, this dialog remains open after the Ok button is clicked.

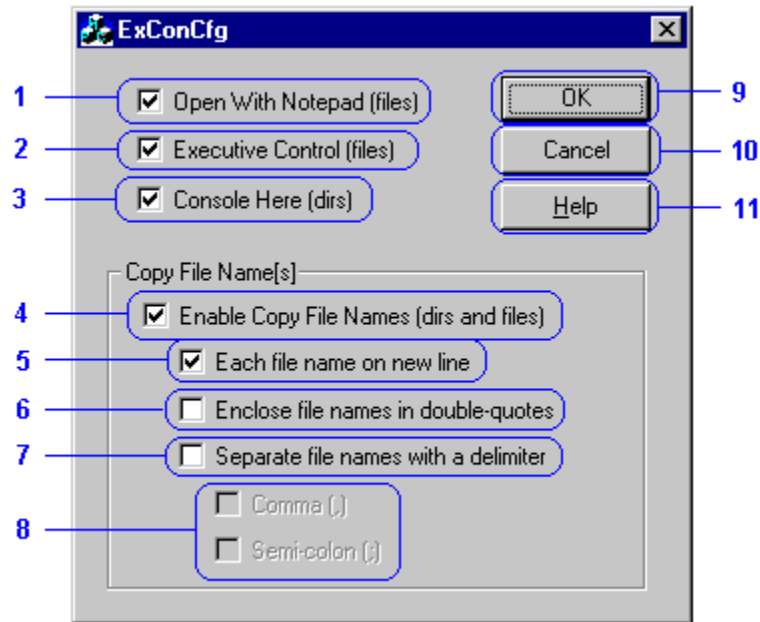
Ok push button

Click this button to begin execution of the comand to execute, using entered arguments.
This automatically closes the dialog unless the Don't close after Exec option is set.

Clear pushbutton

Clears the values of all controls.

ExCon Configuration User Interface Map



Enable Open With Notepad

Causes ExCon to add the item Open With Notepad to the context menu for all files.

Enable On The Fly

Causes ExCon to add the item On The Fly to the context menu for all files.

Enable Copy File Names

Causes ExCon to add the item Copy File Names to the context menu for all selected directories and/or files.

Enable Console Here

Causes ExCon to add the item Console Here to the context menu for all selected directories.

The terms "folder" and "directory" are assumed to be synonyms.

How To Register ExCon

About Shareware

The shareware distribution method is an innovative way to market - and obtain! - exciting new software like ExCon. Users like yourself are given the opportunity to test-drive software for free or a nominal disk charge, and independent software companies like Accurate Technologies, are offered the freedom to publish their software titles with minimal overhead. Low overhead helps keep prices down and spurs a brand of creativity and dedication found only in the shareware market.

Shareware distribution relies upon the support of those who use shareware programs: Please feel free to give copies of ExCon to your friends and colleagues. And if you use ExCon beyond the evaluation period, please register.

Why Register?

Users are granted a license to use this shareware evaluation version of ExCon for a sixty day evaluation period without cost. After this period, you must either register the program or remove it from your system. We certainly hope that you will find the program useful and register it!

As a registered user, you will receive...

- * * * A license for continued use of ExCon.
- * * * Unlimited free technical support and customer service.
- * * * Free updates to any and all future version 1.x releases.
(Updates are made available electronically. Diskette by mail is available at an additional charge.)
- * * * Updates to subsequent major versions will be available to you at reduced cost.)

Please register today and support the further development of ExCon and other shareware products. The shareware concept can only work with your support.

How much does it cost?

Only \$17.95! (U.S. Funds)

For ordering information, please click one of these topics:

[How to Register Via the World Wide Web](#)

[How To Register By Check \(Cheque\) Or Money Order](#)

[How To Register Via CompuServe](#)

Interested in purchasing a site license for your company or organization?

Please call or write for details:

How to Register by Credit Card Via the World Wide Web

We now have a secure commerce server in place, and you may register using a credit card via the World Wide Web, if you prefer. Our home page (from which links to the commerce server are provided) is at:

<http://www.getsoftware.com/cgi/info.gsc?productid=180>

(Or use the shortcut link in the ExCon start button folder.)

Thank you for your support! It is appreciated!

How to Register By Check (Cheque) Or Money Order
ExCon -- Only \$17.95;

To Register and receive the latest version print and mail the form
below:

ACCURATE TECHNOLOGIES
P.O. BOX 4943
SAN DIEGO, CA 92164-4943
"SATISFACTION GUARANTEED",

ExCon Order Form

Name: _____
Company: _____
Address: _____
City, ST: _____
Zip Code: _____

Home Phone #:(_____) _____ - _____
Work Phone #:(_____) _____ - _____

E-Mail: _____

QUANTITY:

_____ at \$17.95 Single User Licenses
_____ at \$37.95 Site License Six Packs

_____ at \$10.00 optional booklet and 3.5" or 5.25" diskettes by mail
(Sold in combination with a license only. circle preferred size, 3.5" shipped if
none specified.)

(CA residents add 7.75 % sales tax)
Total Enclosed: \$ _____

Thank you for your support! It is appreciated!

How To Register Via CompuServe

You can easily register ExCon, no matter where you live, if you are a member of the CompuServe Information Service. CompuServe now offers a special area dedicated to shareware registrations... Use it to register ExCon and the purchase price, in U.S. funds - or the current exchange value in your local currency - will be added to your next CompuServe bill. It's a quick and easy way to register all of our shareware packages.

All ExCon license option packages are available through CompuServe

How do you use it? Just GO SWREG and follow the instructions as they appear. (The Registration ID number for this product has not been issued at this writing, please search by author id 70711,527.)

Our SWREG processing system automatically generates validation codes. Register ExCon on CompuServe SWREG, and you'll receive a validation code via e-mail within 72 hrs of registering.

Thank you for your support! It is appreciated!

Contacting Accurate Technologies

Accurate Technologies is dedicated to the complete and total satisfaction of our customers. If you have any questions about or problems with this software, you are encouraged to contact us. We will do our absolute best to help you. We can be reached through the following channels...

Mail:

Accurate Technologies,
P.O. Box 4943
San Diego, CA 92164-4943 USA

E-Mail:

Internet #1: mmcginty@adnc.com
Internet #2: mmcginty@bigfoot.com
Internet #3: mmcginty@compuserve.com
Internet #4: 70711.527@compuserve.com
CompuServe: 70711,527

World Wide Web:

<http://www.getsoftware.com/acctech>
(Or use the shortcut link in the ExCon start button folder.)

ExCon is distributed via the shareware distribution method.

Users are granted a license to use this software for evaluation purposes for a period not to exceed thirty days. After this period, users must either register (purchase a license for continued use and other benefits) or cease using the software and remove all copies from their system. More information on registration can be found in the Registration Information section of this file.

SHAREWARE LICENSE AGREEMENT

This is an agreement between you (either an individual or an entity) and Accurate Technologies. By using or distributing copies of the shareware evaluation version of the ExCon package in any way, you are agreeing to be bound by the terms of this agreement. If you do not agree to the terms of this agreement, you must cease using or distributing this software immediately.

1) COPYRIGHT: ExCon is Copyright c 1997 by Accurate Technologies and is protected by United States copyright laws and international treaty provisions. Accurate Technologies, the copyright holder, has and reserves the exclusive copyright and other right, title, and interest to copy and distribute this software, and the right to use the Trademark "ExCon" in connection with it.

2) LICENSE TO USE: You may use the shareware evaluation version of ExCon for a period not to exceed thirty (30) days. If you wish to use it beyond this period, you must register by making the necessary payment to Accurate Technologies as outlined elsewhere in this package.

3) NON-COMMERCIAL DISTRIBUTION: You are granted a license to copy and distribute the shareware evaluation version of ExCon in a non-commercial manner. Distribution is non-commercial if it is for free, or by any not-for-profit organization, or by hobby, user or computer interest group to its members, or by any BBS, provided the ExCon package is not modified or abridged in any way. Accurate Technologies reserves the right to revoke this license at any time for any reason on 90 days advance written notice. Commercial distributors should read the "VENDOR.DOC" file included elsewhere in this package.

4) THIS PACKAGE (CONSISTING OF THE ExCon SOFTWARE AND ASSOCIATED FILES AND DOCUMENTATION) IS PROVIDED "AS IS" WITHOUT REPRESENTATION OR WARRANTY OF ANY KIND, EITHER EXPRESSED OR IMPLIED, INCLUDING WITHOUT LIMITATION, ANY REPRESENTATIONS OR ENDORSEMENTS REGARDING THE USE OF, THE RESULTS OF, OR PERFORMANCE OF; ITS APPROPRIATENESS, ACCURACY, RELIABILITY, OR CURRENTNESS. THE ENTIRE RISK AS TO THE USE OF THIS PACKAGE IS ASSUMED BY THE USER. IN NO EVENT WILL ACCURATE TECHNOLOGIES OR ITS SUPPLIERS BE LIABLE FOR ANY DAMAGES, DIRECT, INDIRECT, INCIDENTAL, OR CONSEQUENTIAL, RESULTING FROM ANY DEFECT IN THE PACKAGE, EVEN IF ACCURATE TECHNOLOGIES OR ITS SUPPLIERS HAVE BEEN ADVISED OF THE POSSIBILITY OF SUCH DAMAGES. ANY AND ALL USE OF THIS PACKAGE, FOR ANY PURPOSE, WITH NO REGARD TO THE LEGALITY OF SUCH USE OR PURPOSE, IS THE COMPLETE AND SOLE RESPONSIBILITY OF THE USER. Some states do not allow disclaimers of implied warranties or the exclusion of consequential damages, so the above disclaimers and exclusions may not apply to you.

5) GOVERNING LAW: This agreement is governed by the laws of the State of California. Should any part or parts of this agreement be deemed unlawful, the remainder shall continue to apply.

NOTE: The registration package sent to registered users includes a software license agreement. This agreement is similar to the "shrink wrap" agreements found in most

software packages distributed through retail channels. Registered users will have the option of returning the package for a full refund if they do not agree to the terms of that agreement.

Copyright c 1997 Accurate Technologies, and ExCon are trademarks of Accurate Technologies. All other trademarks mentioned are the property of their respective companies.

ALL TERMS ARE SUBJECT TO CHANGE WITHOUT NOTICE.

PUBLISHED AS SHAREWARE AND REPRESENTED WORLD-WIDE EXCLUSIVELY BY ACCURATE TECHNOLOGIES.

