

Alarm Clock

A clock for your desktop. You can change the chimes, alarms, colors, and type of clock.

application Control-menu



R estore
M ove
S ize
M inimize
M aximize
C lose
S witch To...

- Restores the application window to its former size.
- Moves the application window to another location.
- Changes the size of the application window.
- Shrinks the application window to an icon.
- Enlarges the application window to its maximum size.
- Closes the application window.
- Starts Windows Task List.

title bar



Contains the title of the application running in the window, in this case Alarm Clock.

- ▶ Drag the title bar to move the window.

Minimize button



- ▶ Click the Minimize button to shrink the Alarm Clock window to an icon.

Maximize button



- ▶ Click the Maximize button to enlarge the Alarm Clock window to its maximum size.

Settings menu

Settings

<u>A</u>nalog Face	Changes the clock to analog.
<u>D</u>igital Face	Changes the clock to digital.
<u>C</u>olors...	Changes the colors of the clock.
<u>S</u>ounds...	Assigns sounds to chimes and alarms.
<u>C</u>himes...	Activates chimes.
<u>A</u>larms...	Sets alarms.
<u>E</u>xit	Exits Alarm Clock.

Help menu

Help

Index

Displays an alphabetical list of all Help topics.

Keyboard

Displays Help on Alarm Clock key combinations.

Commands

Displays Help on Alarm Clock commands.

Procedures

Displays Help on Alarm Clock procedures.

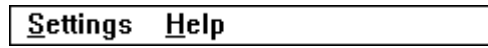
Using Help

Displays information about Windows Help.

About...

Displays important information about Alarm Clock.

menu bar



Contains the names of all the Alarm Clock menus.

- ▶ Click a menu name to display commands.

second hand

- ▶ Use the Colors command from the Settings menu to change the second hand's color.

minute hand

- ▶ Use the Colors command from the Settings menu to change the minute hand's color.

hour hand

- ▶ Use the Colors command from the Settings menu to change the hour hand's color.

clock ticks

Mark the hour of the day and the minutes in the hour.

- ▶ Use the Colors command from the Settings menu to change the color of the clock ticks.

clock face

- ▶ Use the Colors command from the Settings menu to change the clock face's color.

application window

The main window for an application, in this case the Alarm Clock window. The Alarm Clock application window contains an analog or digital clock.

- ▶ Use the Colors command from the Settings menu to change the clock window's color.

window border



The outside edge of a window.

- ▶ Drag the window border to change the size of the window.

