

hp registry composer



user's guide

hp web services platform-
developer edition, January 2002



This document is copyrighted. No part of this document may be reproduced, stored in a retrieval system, or transmitted in any form or by any means, electronic, mechanical, photocopying, recording, or otherwise, without the prior written permission of HP Middleware, except as allowed under the copyright laws.

© Copyright Hewlett-Packard Company 2002. All rights reserved.

Java is a trademark of Sun Microsystems. All other brand names are trademarks of their respective owners.

The information in this document is subject to change without notice or obligation. If you find any problems with this document, please report them to us in writing. The information presented in this document is as accurate as possible at the time of printing, and we assume no liability for its contents or use.

Contents

About this Guide.....	1	File Menu	12
Audience	1	Edit Menu	12
Prerequisites	1	Actions Menu	12
Operating System Requirements	1	Help Menu	12
Hardware Requirements	1	“Businesses” Tab	13
Software Requirements and Configuration ...	2	Search Panel	13
Installing the HP Registry Composer	2	“Define Search Filter” Button.....	13
Installing as a Stand-Alone Application.....	2	“Clear Search Filter” Button	14
Installing With the Product Web Services		Current Search Criteria Display Area	14
Platform - Developer Edition	2	“Search” Button	14
Organization	3	“Cancel Search” Button	14
Documentation Conventions	3	Businesses Tree	15
UDDI Registry URLs	4	Selected Item Detail Panel	16
Chapter 1: Graphical Components ..	5	Business Entity Details	16
Introduction	5	Binding Template Details	18
Menu Bars	6	TModel Details	19
Tabs.....	6	Context-Sensitive Menu Bar and Pop-up	
Search Panels	6	Menus	20
Tree Views	6	Menus Available when Root of the Tree is	
Overview	6	Selected	20
Business Entity Nodes	7	Menus Available when “Business” Node is	
Business Service Nodes.....	7	Selected	21
Binding Template Nodes.....	7	Menus Available when “Service” Node is	
TModel Nodes	7	Selected	22
Detail Panels	8	Menus Available when “Binding” Node is	
Pop-up Menus	9	Selected	24
Search Filter Wizards.....	10	Menus Available when “TModel” Node is	
UDDI Object “Edit” Wizard.....	11	Selected	25
Main Menu Bar	12	“TModels” Tab	27
		Search Panel	27
		“Define Search Filter” Button.....	27
		“Clear Search Filter” Button	28
		Current Search Criteria Display Area	28

TModels Tree	28	Viewing a TModel’s Web Page or WSDL	
TModel Details Panel	28	File	45
Context-Sensitive Menu Bar and Pop-up		Step 1: Right-Click on a TModel in Any of the	
Menus	29	3 Tabs	45
Menus Available when Root of the Tree is		Step 2: Select “Get TModel...” From the Pop-	
Selected	29	Up Menu.....	46
Menus Available when “TModel” Node is			
Selected	30		
“Services by Interface” Tab	32	Chapter 3: Context Sensitive	
Search Panel.....	32	Functions 47	
“Define Search Filter” Button	32	Browsing Functions	47
“Clear Search Filter” Button.....	33	How to Search for Businesses	47
Current Search Criteria Display Area.....	33	Searching by Name	48
“Search” Button.....	33	Searching by Identifier(s)	49
“Cancel Search” Button.....	33	Searching by Category/Categories	50
Services Tree.....	34	Searching for Services	51
Selected Item Detail Panel	34	Searching for TModels	52
Business Service Details.....	34	Searching by Name	52
Binding Template Details.....	34	Searching by Identifier(s).....	53
TModel Details	34	Searching by Category/Categorie	54
Context-Sensitive Menu Bar and Pop-up		Publishing Functions	55
Menus.....	34	Creating, Modifying, and Deleting Business	
Menus Available when Root of the Tree is		Entities	55
Selected	34	How to Create a New Business Entity	55
Menus Available when “Service” Node is		How to Modify an Existing Business Entity	55
Selected	35	How to Delete a Business Entity.....	55
Menus Available when “Binding” Node is		The “Business Entity” Wizard	56
Selected.....	35	Business Entity Attributes Screen.....	56
Menus Available when “TModel” Node is		Business Entity Identifiers Screen	57
Selected	35	Business Entity Categories Screen	57
“Identifier” Screens.....	37	Creating, Modifying, and Deleting Business	
“Categorization” Screens	38	Services	58
Chapter 2: Always Accessible		How to Create A Business Service	58
Functions..... 39		How to Modify an Existing Business	
Logging in to a UDDI Registry	39	Service.....	58
Viewing and Modifying the Registry Composer’s		How to Delete a Business Service	58
Settings.....	40	The “Business Service” Wizard	59
Fields in the Settings Dialog.....	41	Business Service Attributes Screen.....	60
Modifying the UDDI URLs Displayed in the		Business Service Categories Screen.....	60
Settings Dialog.....	43	Creating, Modifying, and Deleting Binding	
Modifying the UDDI Taxonomies.....	44	Templates	61
		How to Create a Binding Template.....	61
		How to Modify an Existing Binding	
		Template.....	61
		How to Delete a Binding Template.....	61
		The “Binding Template” Wizard	62

Binding Template Attributes Screen	63
“Associate TModels with Binding” Screen.	63
Creating, Modifying, and Deleting TModels..	64
How to Create a TModel	64
How to Modify an Existing TModel	64
How to Delete a TModel	65
The “TModel” Wizard	65
TModel Attributes Screen	66
TModel Identifiers Screen	66
TModel Categories Screen	67
Generating a Client-Side Java “Proxy” for Accessing a Service.....	68
Generate a Proxy From the “Businesses” Tab	68
Step 1: Select a TModel & Click on “Generate Client-Side Proxy”	68
Step 2: Select the Destination Directory.....	69
Step 3: “Client Proxy Created!” Message Box	69
Generate a Proxy From the “TModels” Tab...	70
Step 1: Select a TModel & Click on “Generate Client-Side Proxy”	70
Step 2: Select the Destination Directory	71
Step 3: “Client Proxy Created!” Message Box	71
Generate a Proxy from the “Services by Interface” Tab	72
Step 1: Select a TModel & Click on “Generate Client-Side Proxy”	72
Step 2: Select the Destination Directory	73
Step 3: “Client Proxy Created!” Message Box	73

List of Figures

Figure 1:	HP Registry Composer	5
Figure 2:	Pop-up Menus	9
Figure 3:	Search Filter Wizards	10
Figure 4:	UDDI Object “Edit” Wizards	11
Figure 5:	“Business” Tab	13
Figure 6:	Business Entity Details	16
Figure 7:	Business Service Details	17
Figure 8:	Binding Template Details.....	18
Figure 9:	TModel Details.....	19
Figure 10:	“Actions” Menu Items when Root of the Tree is Selected	20
Figure 11:	Pop-Up Menu Items when Root of the Tree is Selected.....	20
Figure 12:	“Actions” Menu Items when “Business” Node is Selected	21
Figure 13:	Pop-Up Menu Items when “Business” Node is Selected.....	21
Figure 14:	“Actions” Menu Items when “Service” Node is Selected	22
Figure 15:	Pop-Up Menu Items when “Service” Node is Selected	23
Figure 16:	“Actions” Menu Items when “Binding” Node is Selected.....	24
Figure 17:	Pop-Up Menu Items when “Binding” Node is Selected	24
Figure 18:	“Actions” Menu Items when TModel Node is Selected	25
Figure 19:	Pop-Up Menu Items when TModel Node is Selected.....	26
Figure 20:	TModels Tab	27
Figure 21:	“Actions” Menu Items when Root of the Tree is Selected	29
Figure 22:	Pop-Up Menu Items when Root of the Tree is Selected	29

Figure 23:	“Actions” Menu Items when TModel Node is Selected	30
Figure 24:	Pop-Up Menu Items when TModel Node is Selected.....	31
Figure 25:	“Services by Interface” Tab	32
Figure 26:	“Actions” Menu Items.....	35
Figure 27:	Pop-Up Menu Items	36
Figure 28:	“Identifier” Screens	37
Figure 29:	“Categorization” Screen.....	38
Figure 30:	“Login” Dialog	39
Figure 31:	“Logged In” Message Box	40
Figure 32:	Settings Dialog	40
Figure 33:	“Inquiry URL” Combo-Box from the Settings Dialog	40
Figure 34:	Viewing a TModel’s Web Page or WSDL File, step 1	45
Figure 35:	Viewing a TModel’s Web Page or WSDL File, step 2.....	46
Figure 36:	Searching for Businesses by Name	48
Figure 37:	Searching for Businesses by Identifiers	49
Figure 38:	Searching for Businesses by Category	50
Figure 39:	Searching for Services.....	51
Figure 40:	Searching for TModels by Name	52
Figure 41:	Searching for TModels by Identifiers	53
Figure 42:	Searching for TModels by Categories.....	54
Figure 43:	Deleting a Business Entity	55
Figure 44:	The Business Entity Wizard	56
Figure 45:	The “Business Entity Attributes” Screen	56
Figure 46:	The “Identify your business” Screen	57
Figure 47:	The “Categorize your business” Scree	57
Figure 48:	Deleting a Business Service	59
Figure 49:	The Business Service Wizard.....	59
Figure 50:	The “Business Service Attributes” Scree	60
Figure 51:	The “Business Service Categories” Scree	60
Figure 52:	Deleting a Binding Template	62
Figure 53:	The Binding Template Wizard.....	62

Figure 54:	The “Binding Template Attributes” Screen	63
Figure 55:	Associate TModels with Binding Scree	63
Figure 56:	Deleting a TModel	65
Figure 57:	The TModel Wizard	65
Figure 58:	The “TModel Attributes” Screen	66
Figure 59:	The “TModel Identifiers” Screen	66
Figure 60:	The “TModel Categories” Screen	67
Figure 61:	Generate a Client Side Java Proxy, Step 1	68
Figure 62:	Generate a Client Side Java Proxy, Step 2	69
Figure 63:	Generate a Client Side Java Proxy, Step 3	69
Figure 64:	Generate a Proxy from the TModel Tab, Step 1	70
Figure 65:	Generate a Proxy from the TModel Tab, Step 2	71
Figure 66:	Generate a Proxy from the TModel Tab, Step 3	71
Figure 67:	Generate a Proxy from the “Service by Interface” Tab, Step 1	72
Figure 68:	Generate a Proxy from the “Service by Interface” Tab, Step 2	73
Figure 69:	Generate a Proxy from the “Service by Interface” Tab, Step 3	73



About this Guide

The objective of this User's Guide is to give you a basic information about the HP Registry Composer. The Guide contains a detailed presentation of the Composer's graphical interface and functions, as well as examples of basic procedures.

Audience

This Guide is needed both by the technical and by the business users of the UDDI Business Registry for the following:

- to locate information about services,
- to prepare systems that are compatible with advertised Web services, or
- to describe their own Web services for others to call.

In order to use this Guide effectively, users need to have a basic knowledge of the operating system running on their machines.

Prerequisites

The system requirements for running the Registry Composer are as follows:

Operating System Requirements

- Windows 98/NT/2000,
- HP-UX, or
- Linux

Hardware Requirements

- Memory: 128 MB of RAM and above
- Hard Disk Space: 10 MB and above

Software Requirements and Configuration

Microsoft Windows 98/NT/2000 Platform

- JDK 1.3 or higher installed on the system.
- The variable `JAVA_HOME` is set properly and points to the location of JDK 1.3. For example, if JDK is installed in `c:\jdk1.3.1` the variable `JAVA_HOME` will be `c:\jdk1.3.1`.

HP-UX Platform

- JDK 1.3 or higher installed on the system.
- The variable `JAVA_HOME` is set properly and points to the location of JDK 1.3. For example, if JDK is installed in `/usr/share/jdk1.3.1`, then export `JAVA_HOME=/usr/share/jdk1.3.1` (for bash).
- Execute **browser.sh** from the directory where the HP Registry Composer application was installed.

LINUX Platform

- JDK 1.3 or higher installed on the system.
- The variable `JAVA_HOME` is set properly and points to the location of JDK 1.3. For example, if JDK is installed in `/opt/jdk1.3.1`, then export `JAVA_HOME=/opt/jdk1.3.1` (for bash).
- Execute **browser.sh** from the directory where the HP Registry Composer application was installed.

Installing the HP Registry Composer

The application HP Registry Composer needs to be installed on your machine. The installation itself will depend on whether this application will be used as stand-alone or together with the product Web Services Platform - Developer Edition.

Installing as a Stand-Alone Application

In order to install the Registry Composer as a stand-alone application, you need to use the provided Install Anywhere application.

The Installer will create a “HP Registry Composer” item. Once the composer is installed, select “HP Registry Composer” from the menu in the following way:

```
Start --> Programs --> HP Registry Composer
```

Installing With the Product Web Services Platform - Developer Edition

The installation of the product Web Services Platform - Developer Edition will include also the Registry Composer application.

You can start the HP Registry Composer and open its starting screen by entering the following command:

```
Start --> Run --> C:\UDDIV2\browser.bat
```

Organization

This Guide has three chapters:

- “Graphical Components”, which introduces the user to the graphical interface of the Registry Composer tool;
- “Always Accessible Functions”, which explains the functions that are always available since the HP Registry Composer works with registries that require a user to log in as well as those that don't.
- “Context Sensitive Functions”, which explains the functions such as browsing and publishing, as well as the procedure of generating a client-side Java “proxy” for accessing a service

Documentation Conventions

The following conventions are used in this guide:

Table 1 Documentation Conventions

Convention	Description
Bold	Used to identify menu selections, toolbar selections, and section references.
<i>Italic</i>	In paragraph text, italic identifies the titles of documents that are being referenced. When used in conjunction with the Code text described below, italics identify a variable that should be replaced by the user with an actual value.
<i>Bold Italic</i>	Used to identify a term that is defined in the Glossary. Readers should reference the Glossary when they are unsure of the complete meaning of a term.
Code	Text that represents programming code.
CTRL+X	A combination of keystrokes that is used to complete a function. For example, CTRL+C indicates that the CTRL key should be held down while the C key is pressed.
Function Function	A path to a function or dialog box within an interface. For example, “Select File Open ” indicates that you should select the Open function from the File menu.
() and	Parentheses enclose optional items in command syntax. The vertical bar separates syntax items in a list of choices. For example, any of the following four items can be entered in this syntax: <code>persistPolicy(Never OnTimer OnUpdate NoMoreOftenThan)</code>
Note and Caution	A Note highlights important supplemental information. A Caution highlights procedures or information that is necessary to avoid damage to equipment, damage to software, loss of data, or invalid test results.

UDDI Registry URLs

Here are some examples of Version 2 UDDI Registry URLs that you can use:

HP V2 Registry

Inquiry URL : <http://uddi.hp.com/scripts/SaISAPI.dll/SaServletEngine.class/inquire>

Publish URL: <https://uddi.hp.com/scripts/SaISAPI.dll/SaServletEngine.class/publish>

IBM V2 Registry

Inquiry URL: <http://www-3.ibm.com/services/uddi/v2beta/inquiryapi>

Publish URL: <https://www-3.ibm.com/services/uddi/v2beta/protect/publishapi>

Microsoft V2 Registry

Inquiry URL: <http://uddi.rte.microsoft.com/inquire>

Publish URL: <https://uddi.rte.microsoft.com/publish>

SAP Registry

Inquiry URL: <http://udditest.sap.com/UDDI/api/inquiry/>

Publish URL: <https://udditest.sap.com/UDDI/api/publish/>

Graphical Components

Introduction

This section is an introduction to the graphical components of the HP Registry Composer.

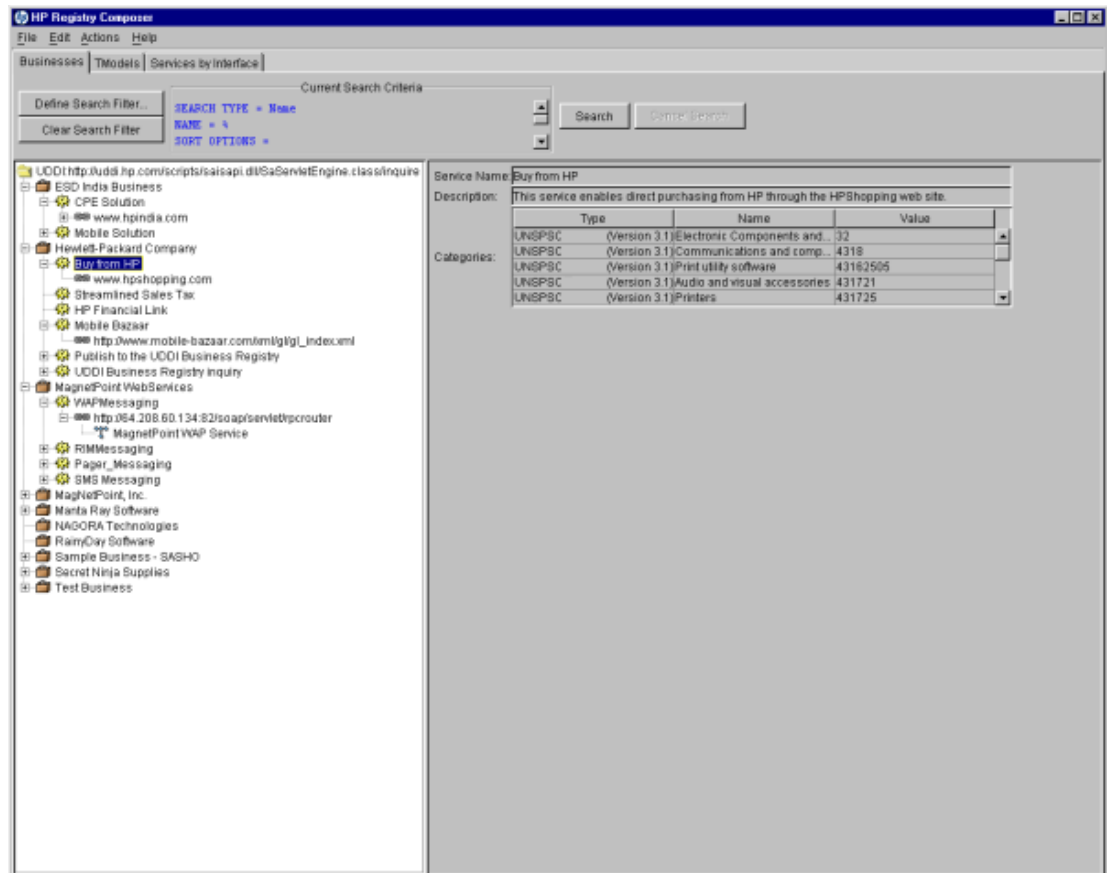


Figure 1: HP Registry Composer

Menu Bars

The HP Registry Composer contains a menu bar along the top of its main frame. The selectable menus are: File, Edit, Actions, and Help. The Edit and Actions menus contain items that are context-sensitive. This means that the menu contents – and “enabled” or “disabled” states of menu items – change depending on which tab is currently selected and what type of tree node the user has selected in the tree.

Tabs

There are three tabs available within the HP Registry Composer. They are labeled: **Businesses**, **TModels**, and **Services by Interface**. Each of these tabs presents a different view into a UDDI registry’s data. Each view provides a unique set of query and editing functions – which are available through the menu bars, the pop-up menus, and the Search Panel.

Search Panels

Each tab in the HP Registry Composer allows the user to search for UDDI registry entries:

- **Businesses** tab allows users to search for business entities.
- **TModels** tab allows users to search for TModels.
- **Services by Interfaces** tab allows users to search for business services.

At the top of each tab is an area called the Search Panel, which is comprised of these parts:

- **Define Search Filter** button,
- **Clear Search Filter** button,
- **Current Search Criteria Display** area,
- **Search** button, and
- **Cancel Search** button.

The functionality of these various components of the Search Panel will be discussed later in this document. However – briefly – the user uses the **Define Search Filter** button to invoke a “wizard” for specifying search criteria. To execute a search, the user clicks on the **Search** button.

Tree Views


Overview

Each of the tree tabs provided by the HP Registry Composer contains a tree view in the left-hand side of the tab and a Details Panel in the right-hand side. The tree view is a graphical list of the UDDI objects (and their children – when there are children) that have been retrieved after the user has specified a search filter and clicked on the **Search** button. The items displayed in the tree are UDDI objects that have been retrieved from the URL displayed in the root of the tree.

The user of the HP Registry Composer can click on items in the tree view and see their details displayed to the right in the Details Panel. Also, if the user wants to interact with any items in the tree, they simply select the desired item and then either right-click to access a pop-up menu of options or they click on the **Edit** or **Actions** menus – for access to the same options.


Business Entity Nodes

Underneath the root node of the **Businesses** tab's tree are all the Business Entity nodes for those businesses that matched the search filter. Each Business Entity node is represented by the following icon followed by the name of the business:

ICON → 


Business Service Nodes

Underneath the root node of the **Services by Interface** tab's tree are all the Business Service nodes for those business services that matched the search filter. Also, in the **Businesses** tab, each Business Entity node has zero or more child Business Service nodes. Each Business Service represents a Web Service that the business has registered into the UDDI registry. You can see all the Business Service nodes underneath a Business Entity node by clicking on the plus sign “+” to the left of the Business Entity Node. Each Business Service node is represented by the following icon followed by the name of the service:

ICON → 

Binding Template Nodes


Each Web Service can be accessed by one or more URLs. That URL could be an email address, an http URL, an ftp URL, etc. Each URL that can be used to access a Web Service is called a “binding”. In UDDI registries, each binding to a Web Service is represented by a Binding Template. Within our Registry Composer, each Business Service node has zero or more child Binding Template nodes – each node representing a different URL you can use to access the Web Service. You can see all the Binding Template nodes underneath a Business Service node by clicking on the plus sign “+” to the left of the Business Service Node. Each Binding Template node is represented by the following icon followed by the URL of the binding:

ICON → 

TModel Nodes

Each URL that can be used to access a Web Service expects data in a certain format. This is often referred to as the “signature” of the Web Service. UDDI registries allow you to store each signature definition as a reference to a document that describes the signature. These references are stored within UDDI as objects called TModels. So what this means is that each Binding Template (the URL) can be “linked” to zero or more TModels that describe the signature of the binding.

Within the Registry Composer, this is represented by each Binding Template node having zero or more child TModel nodes. You can see all the TModel nodes underneath a Binding Template node by clicking on the plus sign “+” to the left of the TModel Node. You can also see TModels in the tree view of the **TModels** tab. Each TModel node is represented by the following icon followed by the name of the TModel:

ICON → 

Detail Panels

Each tab in the HP Registry Composer has a read-only Details Panel to the right of the tree view. This panel allows the user to view the attributes of any of the UDDI objects displayed in the tree view. In order to display an item’s attributes, the user simply clicks on the item in the tree view. Each time an item is selected in the tree view, the HP Registry Composer will query the UDDI registry for that item’s details – and will then show those details in the panel to the right.

It is important to note that the Details Panel provides read-only access to data in the UDDI registry. This is helpful to those who want to obtain data from a UDDI registry but not publish any data. For a user to publish data to the registry, they need to either be logged into the registry or connected to a registry that doesn’t require the user to log in prior to publishing data. Once a user does have write access to a UDDI registry, they publish data (and delete data) via wizards available through the menu bar and pop-up menus.

Pop-up Menus

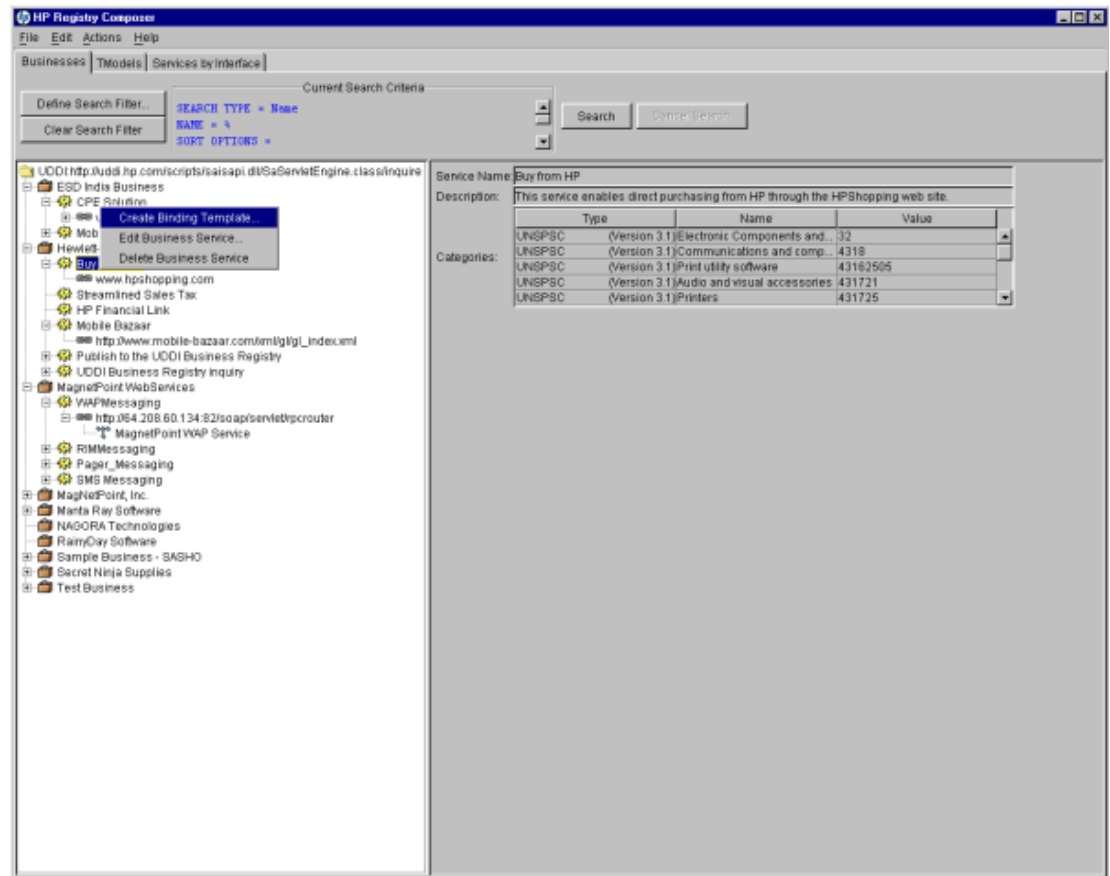


Figure 2: Pop-up Menu

Pop-up Menus are context-sensitive menus that are displayed when you right-click on an item in a tree view. Each menu provides those functions that are relevant to the type of item you have selected in the tree view. Often, the type of functions that are available are: **Edit (selected) ...**, **Create (child) ...**, and **Delete (selected) ...**. But many other functions are available – depending on what is selected.

Search Filter Wizards

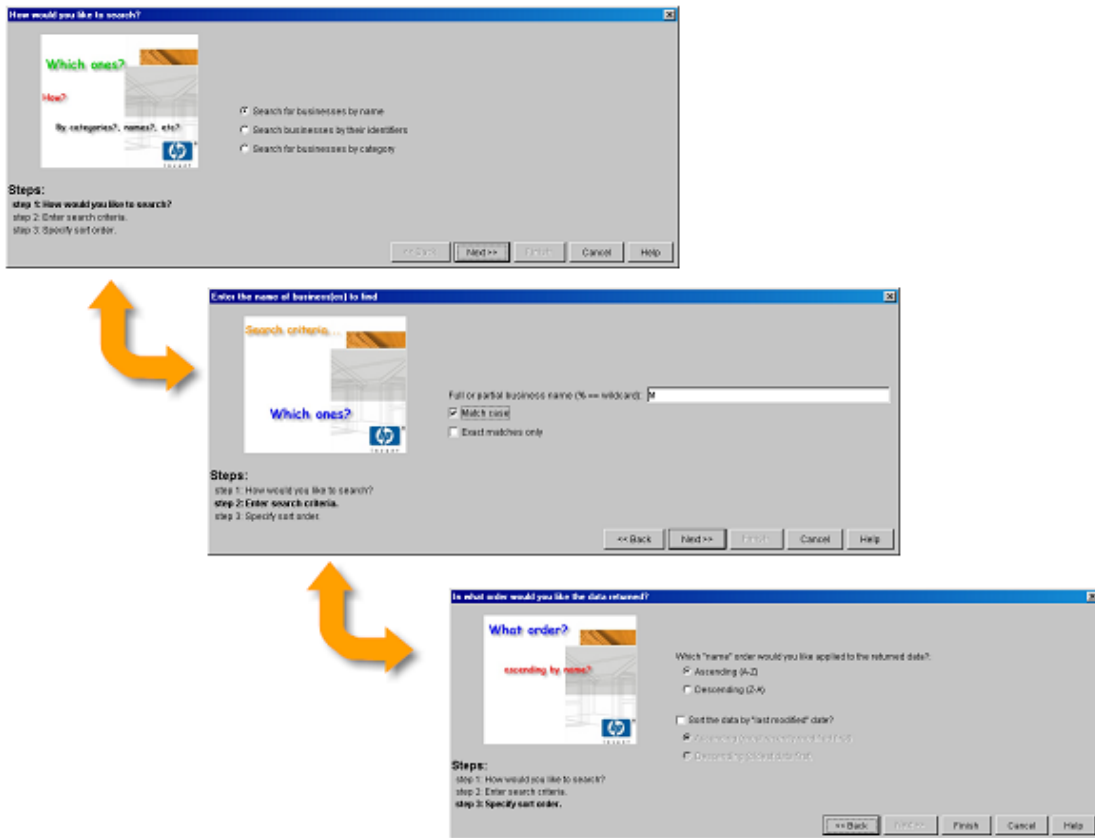


Figure 3: Search Filter Wizards

When a user wants to view (and oftentimes edit) objects using the HP Registry Composer, they first must retrieve those objects from the UDDI registry. In order to specify which objects to retrieve, the user clicks on the **Define Search Filter** button in the currently displayed tab's Search Panel. Clicking on **Define Search Filter** causes the application to display a "search criteria" wizard. The user "saves" the search criteria by entering all the required data into the wizard and then clicking on the Finish button. Once the search criteria has been entered, the user can retrieve all the objects that pass that criteria by clicking on the **Search** button in the Search Panel. Once all the matching objects have been retrieved, they will be displayed into the tree view of the currently selected tab.

The HP Registry Composer provides the following "Search" wizards:

- "Search For Businesses" Wizard
- "Search For Services" Wizard
- "Search For TModels" Wizard

UDDI Object “Edit” Wizards

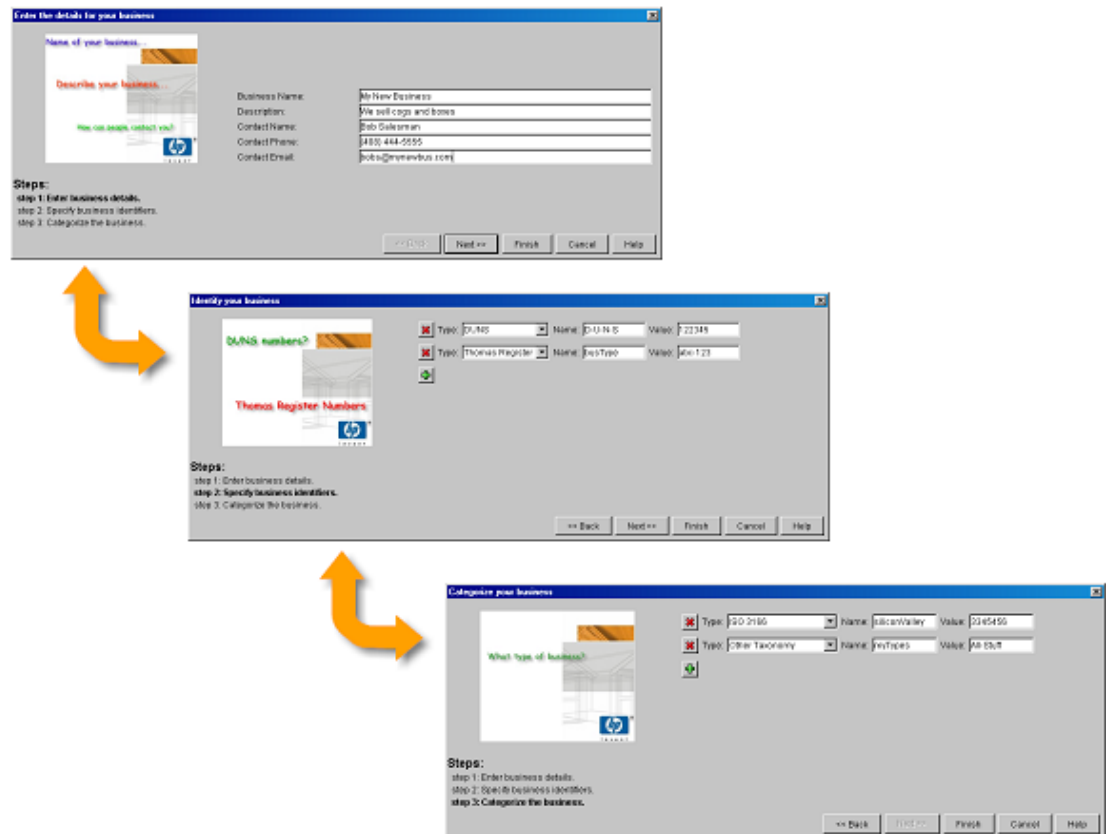


Figure 4: UDDI Object “Edit” Wizards

The HP Registry Composer can be used to create new UDDI objects (Business Entities, Business Services, TModels, etc.) as well as edit existing ones. Whether you are creating a new object or editing an existing one, you do so by interacting with one of the “editing” wizards provided by the application. Each wizard leads you through the steps required to specify the attributes of the type of UDDI object you are editing.

The HP Registry Composer provides the following “Edit” wizards:

- Business Entity Wizard
- Business Service Wizard
- Binding Template Wizard
- TModel Wizard

Main Menu Bar

File Menu

The **File** menu has two items: **Login** and **Exit**. The **Login** menu item brings up a Login dialog into which you can type your UDDI user id and password. The **Exit** menu item exits the tool.

Edit Menu

The **Edit** menu has two items: **Delete** and **Settings**. The **Delete** item is context sensitive. Depending on what you have selected in the UDDI Tree, selecting **Delete** will bring up the corresponding "Delete..." dialog and ask if you really want to delete. If you click "OK", it will delete the selected item from the UDDI registry. Selecting the **Settings** item brings up the dialog that allows you to view and modify the configuration of the Registry Composer.

Actions Menu

The Actions menu is the most context-sensitive menu within the main menu bar and offers different menu options based on the currently selected tab as well as the type of the currently selected item within that tab's tree view. This menu's primary actions are **Edit (selected) ...**, **Create (child) ...**, and **Delete (selected) ...**. However, when TModels are selected, you will find **Get TModel** and **Generate Client-Side Proxy ...** options in the Actions menu.

Help Menu

The **Help** menu allows you to bring up the Help Topics and the "About..." dialog box.

“Businesses” Tab

This section provides an overview of the visual components comprising the “Businesses” Tab as well as the functionality provided by the tab.

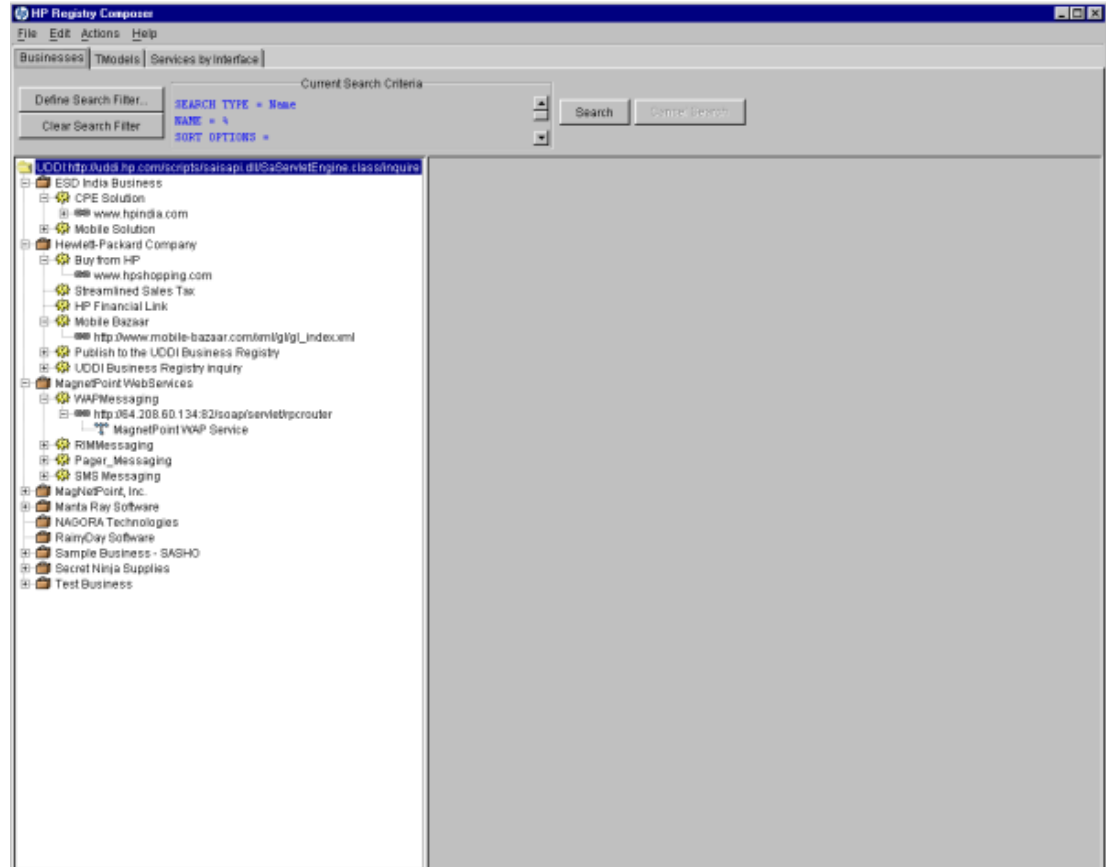


Figure 5: “Business” Tab

Search Panel

The search panel is located along the top of the “Businesses” tab. It provides controls allowing the user to edit the current filter being used to search for Business Entities in the UDDI registry. It also provides controls for starting a search and canceling a search.

“Define Search Filter” Button

Clicking on the “Define Search Filter” button will cause the “Search For Businesses” Wizard to be displayed. The user can modify the search filter using this wizard. The wizard leads the user step-by-step through screens into which the search criteria are entered.

On the last screen of the wizard, the can click on the “Finish” button in order to save the changes made via the wizard. If the user clicks on “Cancel” instead, then none of the changes made through the wizard will be saved.

NOTE: Defining the search filter differs from executing a query against the UDDI registry. The search filter describes which subset of items should be retrieved from the UDDI registry, but the search is only executed against the registry when the user clicks on the "Search" button.

"Clear Search Filter" Button

Clicking on the "Clear Search Filter" button causes the current search filter to be initialized to a "default" state. This means the filter will revert to search for Business Entities by name, and the name field will be set to the empty string.

If the user clears the filter, the "Search" button will be disabled. Only after the user has entered a valid search filter – using the "Search For Businesses" Wizard – will the "Search" button again be enabled. The tree view on the left is also cleared and initialized to the "default" state.

Current Search Criteria Display Area

The Current Search Criteria Display Area is the scrollable text area to the right of the "Define Search Filter" and "Clear Search Filter" buttons. It displays an English version of the current search filter.

"Search" Button

If the user has specified a valid search filter, the "Search" button is enabled. If there is a search currently executing, the "Search" button is disabled until that search returns or until the user clicks on the "Cancel Search" button.

When the "Search" button is enabled and the user clicks on the button, the HP Registry Composer searches the UDDI registry for all Business Entities that pass the search filter previously specified by the user. While the search is ongoing, the "Cancel Search" button is enabled and the "Search" button is disabled. This allows the user to cancel the ongoing search. If the user does cancel the ongoing search before it completes, the "Search" button will be enabled again.

If the user starts a search and allows it to complete, all the Business Entities that passed the search filter are displayed in the tree view in the left-hand portion of the "Businesses" tab.

"Cancel Search" Button

The "Cancel Search" button is used to cancel an ongoing search. The user might want to cancel a search if it has been ongoing for a long time or because they decide to change the search criteria – and, thus, no longer care about the results of the currently executing search.

The only time the "Cancel Search" button is enabled is after the user has clicked on the "Search" button and before the search (which started executing when the user clicked on the "Search" button) has returned.

Businesses Tree

The “Businesses” Tab contains a tree view on its left-hand side. This tree view contains all the Business Entities that have been retrieved most recently as a result of the user clicking on the “Search” button.

Each Business Entity in the tree is represented by a graphical icon followed by the name of the business. Each Business Entity may have a plus ‘+’ sign or a minus ‘-’ sign to its left. The plus sign indicates that there may be child Business Service objects “owned” by the Business Entity. If there are child Business Service objects, they will be displayed when the user clicks on the plus sign. If there are child Business Service objects displayed “under” a Business Entity, that Business Entity will contain a minus sign to its left. To “hide” the Business Services, the user can click on the minus sign.

Each Business Service in the tree is represented by a graphical icon followed by the name of the service. Each Business Service may have a plus ‘+’ sign or a minus ‘-’ sign to its left. The plus sign indicates that there may be child Binding Template objects “owned” by the Business Service. If there are child Binding Template objects, they will be displayed when the user clicks on the plus sign. If there are child Binding Template objects displayed “under” a Business Service, that Business Service will contain a minus sign to its left. To “hide” the Binding Templates, the user can click on the minus sign.

Each Binding Template in the tree is represented by a graphical icon followed by the URL of the Binding Template. Each Binding Template may have a plus ‘+’ sign or a minus ‘-’ sign to its left. The plus sign indicates that there may be TModel objects that the Binding Template “references.” If there are TModel objects referenced by the Binding Template, they will be displayed when the user clicks on the plus sign. If there are referenced TModel objects displayed “under” a Binding Template, that Binding Template will contain a minus sign to its left. To “hide” the TModels, the user can click on the minus sign.

Each TModel in the tree is represented by a graphical icon followed by the name of the TModel.

Selected Item Detail Panel

This section shows and discusses the read-only “Details” panel that displays the currently selected UDDI object’s attributes to the right of the tree view.

Business Entity Details

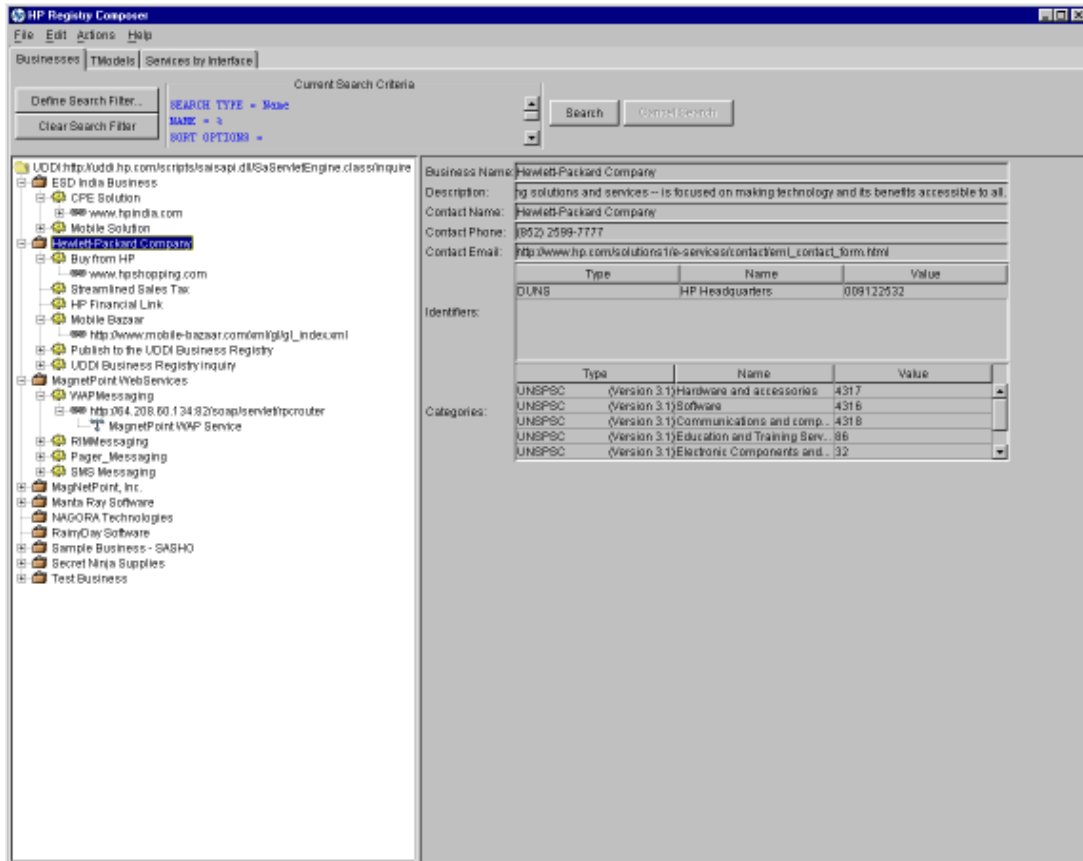


Figure 6: Business Entity Details

When the user has clicked on a Business Entity node in the tree, the HP Registry Composer retrieves the Business Entity’s attributes from the UDDI registry and displays them in the read-only “Details” panel to the right of the tree view. Users can select displayed values from this panel and then “copy” them into editable fields or even into different applications.

The user selects values in the panel by using their mouse. They then copy them by simultaneously holding down the <Ctrl> key and the “C” key. They can then paste the copied data into editable fields or different applications by simultaneously holding down the <Ctrl> key and the “V” key.

Business Service Details

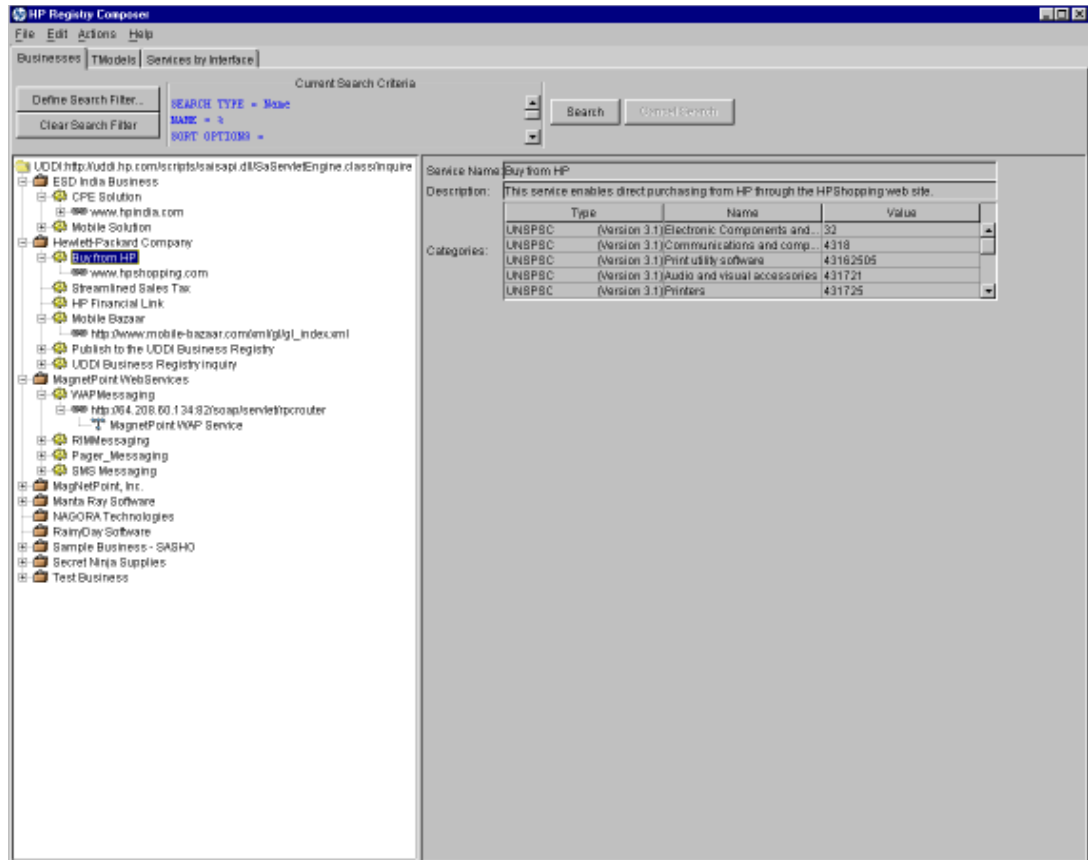


Figure 7: Business Service Details

When the user has clicked on a Business Service node in the tree, the HP Registry Composer retrieves the Business Service's attributes from the UDDI registry and displays them in the read-only "Details" panel to the right of the tree view. Users can select displayed values from this panel and then "copy" them into editable fields or even into different applications. The user selects values in the panel by using their mouse. They then copy them by simultaneously holding down the <Ctrl> key and the "C" key. They can then paste the copied data into editable fields or different applications by simultaneously holding down the <Ctrl> key and the "V" key.

Binding Template Details

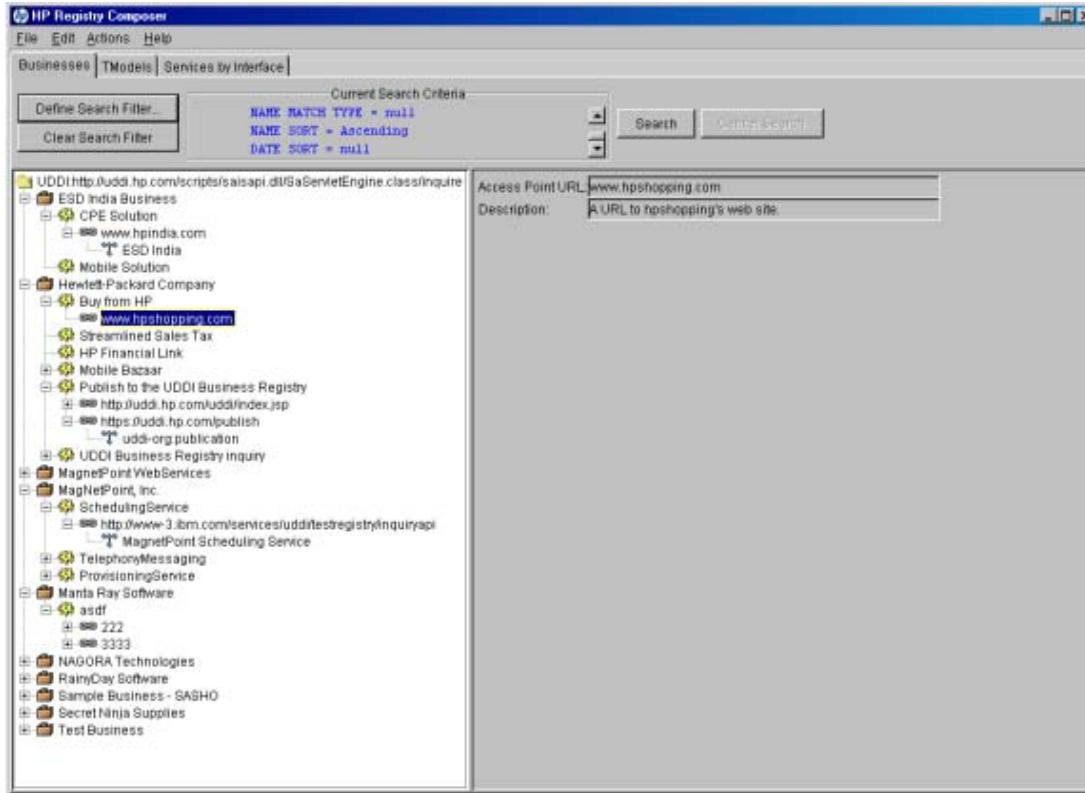


Figure 8: Binding Template Details

When the user has clicked on a Binding Template node in the tree, the HP Registry Composer retrieves the Binding Template's attributes from the UDDI registry and displays them in the read-only "Details" panel to the right of the tree view. Users can select displayed values from this panel and then "copy" them into editable fields or even into different applications. The user selects values in the panel by using their mouse. They then copy them by simultaneously holding down the <Ctrl> key and the "C" key. They can then paste the copied data into editable fields or different applications by simultaneously holding down the <Ctrl> key and the "V" key.

TModel Details

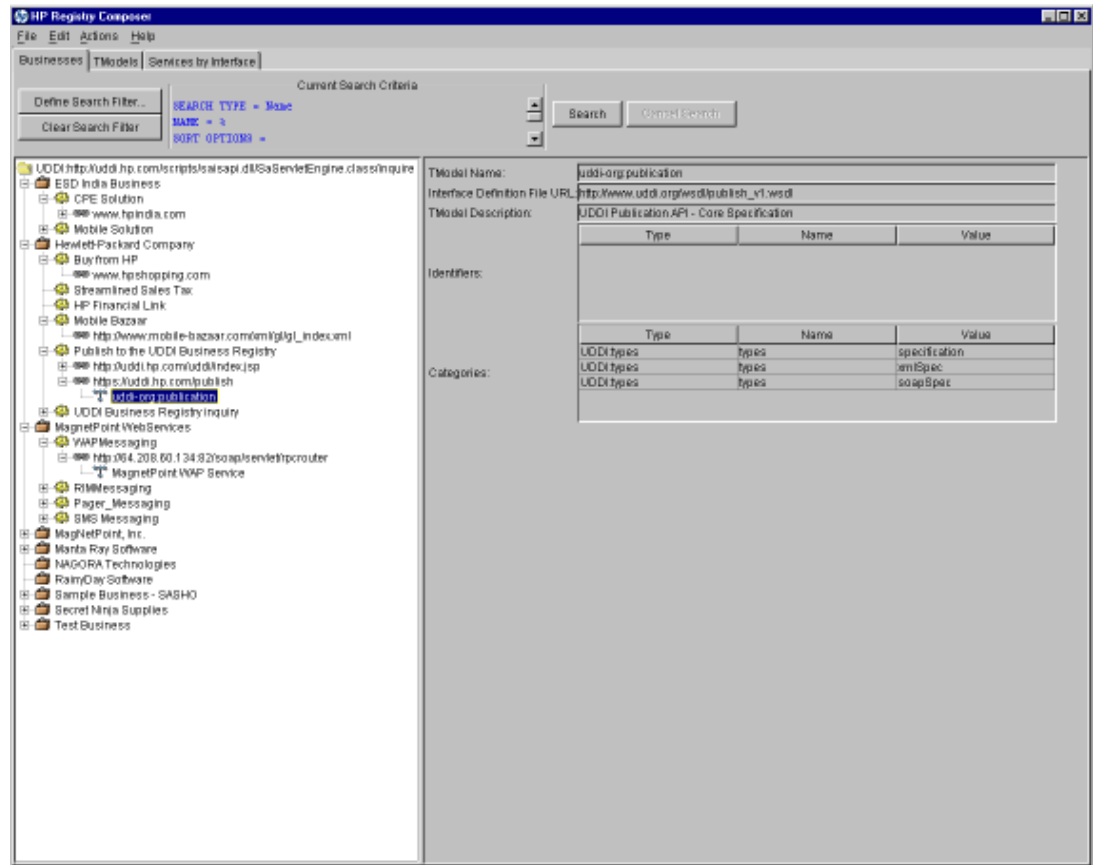


Figure 9: TModel Details

When the user has clicked on a TModel node in the tree, the HP Registry Composer retrieves the TModel's attributes from the UDDI registry and displays them in the read-only "Details" panel to the right of the tree view. Users can select displayed values from this panel and then "copy" them into editable fields or even into different applications. The user selects values in the panel by using their mouse. They then copy them by simultaneously holding down the <Ctrl> key and the "C" key. They can then paste the copied data into editable fields or different applications by simultaneously holding down the <Ctrl> key and the "V" key.

Context-Sensitive Menu Bar and Pop-up Menus

This section shows and discusses the context-sensitive “Actions” menu and the Pop-up Menus available when different types of nodes are selected within the “Businesses” tab’s tree view.

Menus Available when Root of the Tree is Selected

“Actions” Menu Items

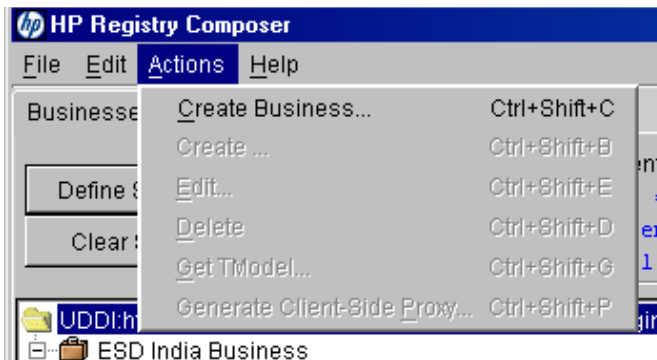


Figure 10: “Actions” Menu Items when Root of the Tree is Selected

When the root of the tree is selected, the “Actions” menu contains a “Create Business” item. This allows the user to launch the Business Entity Wizard. The wizard can be used to create a new Business Entity within the UDDI registry – given that the user has “write” access to the registry.

NOTE: For the user to have “write” access to the UDDI registry, they have to be either logged in to the registry or connected to a registry that allows all users to have “write” access.

Pop-Up Menu Items

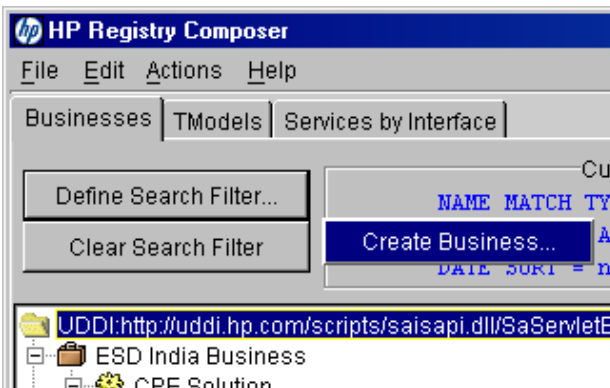


Figure 11: Pop-Up Menu Items when Root of the Tree is Selected

When the user right-clicks on the root of the tree with their mouse, a Pop-up Menu containing a “Create Business...” item is displayed. This allows the user to launch the Business Entity Wizard. The wizard can be used to create a new Business Entity within the UDDI registry – given that the user has “write” access to the registry.

Menus Available when “Business” Node is Selected

“Actions” Menu Items

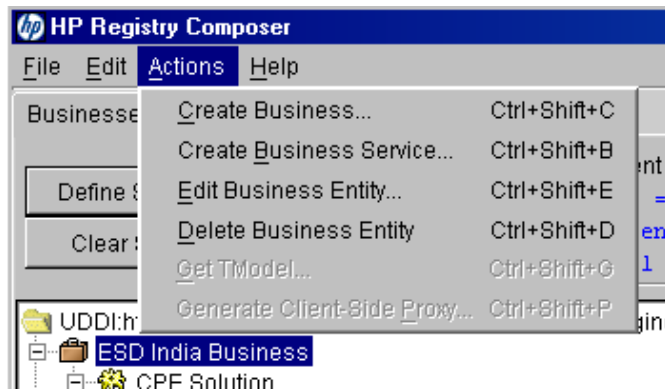


Figure 12: “Actions” Menu Items when “Business” Node is Selected

When the item currently selected in the tree view is a Business Entity, the “Actions” menu contains the following items allowing the user to modify data in the UDDI registry.

NOTE: The user can only modify items in the UDDI registry if they have “write” access to the registry.

Create Business – Selecting this item will launch the Business Entity Wizard – allowing the user to create a new Business Entity in the UDDI registry.

Create Service ... – Selecting this item will launch the Business Service Wizard – allowing the user to create a new Business Service which is a “child” of the selected Business Entity.

Edit Business Entity ... – Selecting this item will launch the Business Entity Wizard – allowing the user to modify the selected Business Entity

Delete Business Entity – Selecting this item will allow the user to delete the selected Business Entity. Before the item is deleted, the HP Registry Composer will display a dialog asking the user if they really want to delete the Business Entity.

Pop-Up Menu Items

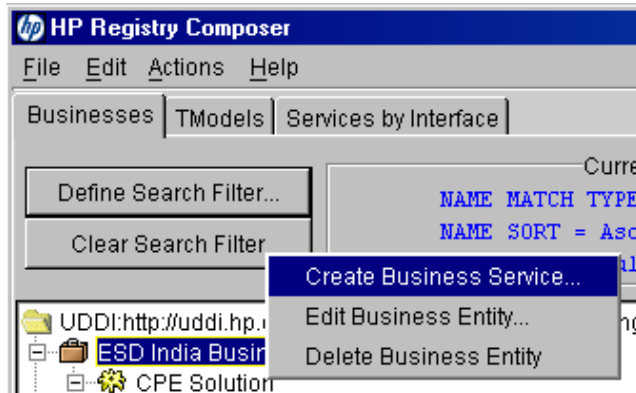


Figure 13: Pop-Up Menu Items when “Business” Node is Selected

When the user right-clicks on a Business Entity with their mouse, a Pop-up Menu is displayed containing the following items which allow the user to modify data in the UDDI registry.

NOTE: The user can only modify items in the UDDI registry if they have "write" access to the registry.

Create Business – Selecting this item will launch the Business Entity Wizard – allowing the user to create a new Business Entity in the UDDI registry.

Create Business Service ... – Selecting this item will launch the Business Service Wizard – allowing the user to create a new Business Service which is a "child" of the selected Business Entity.

Edit Business Entity ... – Selecting this item will launch the Business Entity Wizard – allowing the user to modify the selected Business Entity

Delete Business Entity – Selecting this item will allow the user to delete the selected Business Entity. Before the item is deleted, the HP Registry Composer will display a dialog asking the user if they really want to delete the Business Entity.

Menus Available when "Service" Node is Selected

"Actions" Menu Items

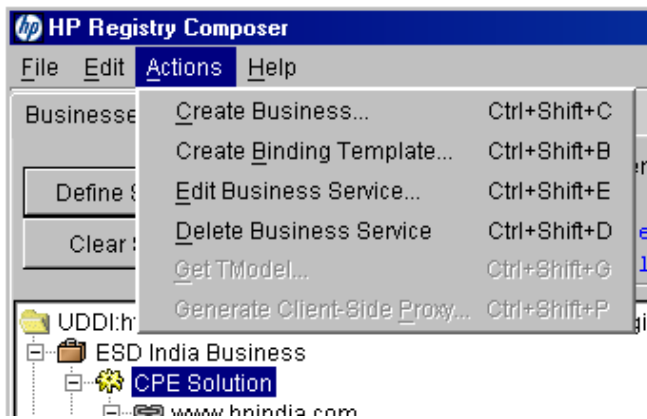


Figure 14: "Actions" Menu Items when "Service" Node is Selected

When the item currently selected in the tree view is a Business Service, the "Actions" menu contains the following items allowing the user to modify data in the UDDI registry.

NOTE: The user can only modify items in the UDDI registry if they have "write" access to the registry.

Create Business – Selecting this item will launch the Business Entity Wizard – allowing the user to create a new Business Entity in the UDDI registry.

Create Binding Template ... – Selecting this item will launch the Binding Template Wizard – allowing the user to create a new Binding Template which is a "child" of the selected Business Service. A Binding Template represents the URL (the address or "access point") for obtaining a Business Service. Each Business Service can have zero or more Binding Templates.

Edit Business Service ... – Selecting this item will launch the Business Service Wizard – allowing the user to modify the selected Business Service.

Delete Business Service – Selecting this item will allow the user to delete the selected Business Service. Before the item is deleted, the HP Registry Composer will display a dialog asking the user if they really want to delete the Business Service.

Pop-Up Menu Items

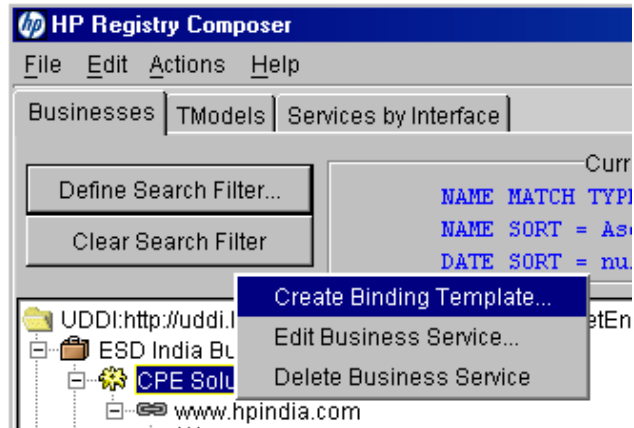


Figure 15: Pop-Up Menu Items when “Service” Node is Selected

When the user right-clicks on a Business Service with their mouse, a Pop-up Menu is displayed containing the following items which allow the user to modify data in the UDDI registry.

NOTE: The user can only modify items in the UDDI registry if they have “write” access to the registry.

Create Binding ... – Selecting this item will launch the Binding Template Wizard – allowing the user to create a new Binding Template which is a “child” of the selected Business Service. A Binding Template represents the URL (the address or “access point”) for obtaining a Business Service. Each Business Service can have zero or more Binding Templates.

Edit Business Service ... – Selecting this item will launch the Business Service Wizard – allowing the user to modify the selected Business Service.

Delete Business Service – Selecting this item will allow the user to delete the selected Business Service. Before the item is deleted, the HP Registry Composer will display a dialog asking the user if they really want to delete the Business Service.

Menus Available when "Binding" Node is Selected

"Actions" Menu Items

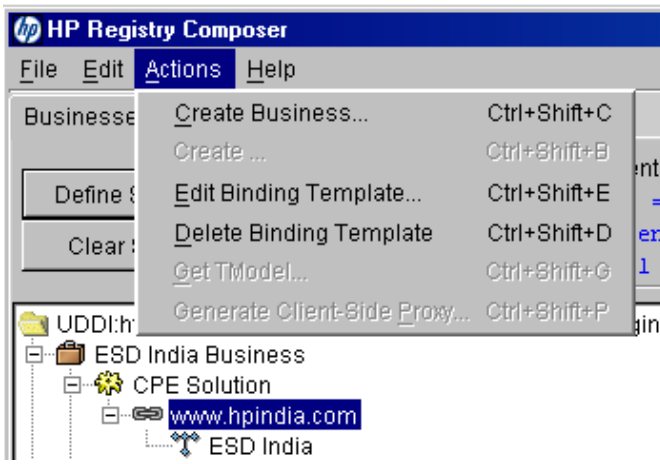


Figure 16: "Actions" Menu Items when "Binding" Node is Selected

When the item currently selected in the tree view is a Binding Template, the "Actions" menu contains the following items allowing the user to modify data in the UDDI registry.

NOTE: The user can only modify items in the UDDI registry if they have "write" access to the registry.

Create Business – Selecting this item will launch the Business Entity Wizard – allowing the user to create a new Business Entity in the UDDI registry.

Edit Binding Template ... – Selecting this item will launch the Binding Template Wizard – allowing the user to modify the selected Binding Template.

Delete Binding Template – Selecting this item will allow the user to delete the selected Binding Template. Before the item is deleted, the HP Registry Composer will display a dialog asking the user if they really want to delete the Binding Template.

Pop-Up Menu Items

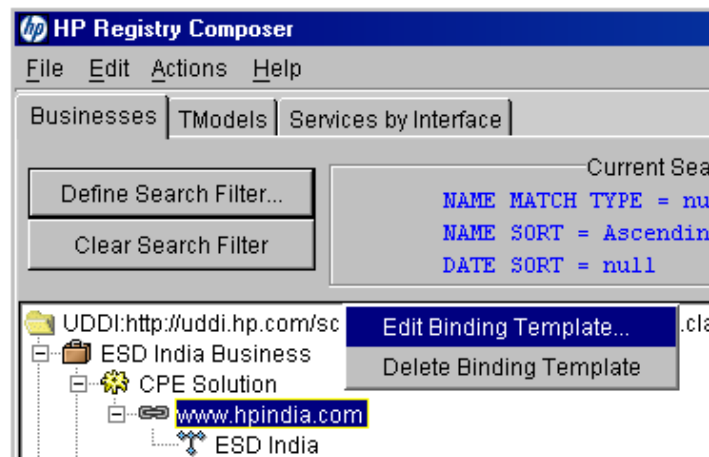


Figure 17: Pop-Up Menu Items when "Binding" Node is Selected

When the user right-clicks on a Binding Template with their mouse, a Pop-up Menu is displayed containing the following items which allow the user to modify data in the UDDI registry.

NOTE: The user can only modify items in the UDDI registry if they have “write” access to the registry.

Edit Binding Template ... – Selecting this item will launch the Binding Template Wizard, allowing the user to modify the selected Binding Template.

Delete Binding Template – Selecting this item will allow the user to delete the selected Binding Template. Before the item is deleted, the HP Registry Composer will display a dialog asking the user if they really want to delete the Binding Template.

Menus Available when “TModel” Node is Selected

“Actions” Menu Items

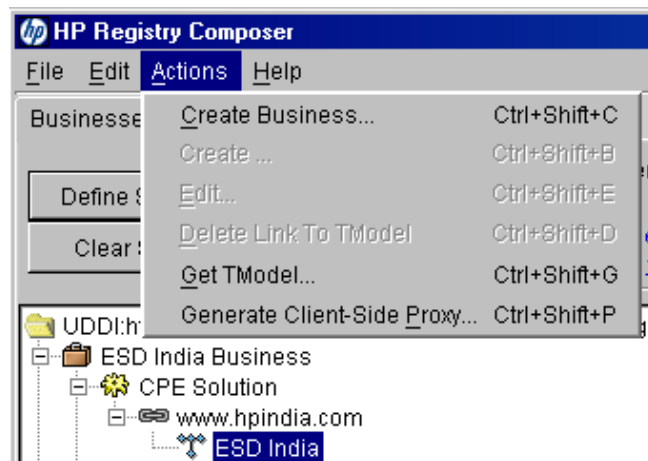


Figure 18: “Actions” Menu Items when TModel Node is Selected

When the item currently selected in the tree view is a TModel, the “Actions” menu contains the following items allowing the user to view and use the TModel:

Create Business – Selecting this item will launch the Business Entity Wizard, allowing the user to create a new Business Entity in the UDDI registry.

Get TModel ... – Selecting this item will cause the HP Registry Composer to inspect the “OverviewURL” attribute of the selected TModel. If this attribute contains a valid URL, the currently configured TmodelViewer (Microsoft Internet Explorer by default) will be invoked – displaying the document addressed by the OverviewURL.

Generate Client-Side Proxy ... – Selecting this item will cause the HP Registry Composer to inspect the “OverviewURL” attribute of the selected TModel and the “category” of the TModel. If the “OverviewURL” attribute contains a valid URL and the TModel is a “WSDL” document, the HP Registry Composer will display a dialog allowing the user to specify where the generated client-side Java proxy for calling the service will be written. Once the user has selected a location on disk and clicked on the dialog’s “Generate Proxy” button, the HP Registry Composer will generate a Java client-side proxy based upon the data in the TModel’s WSDL document.

Pop-Up Menu Items

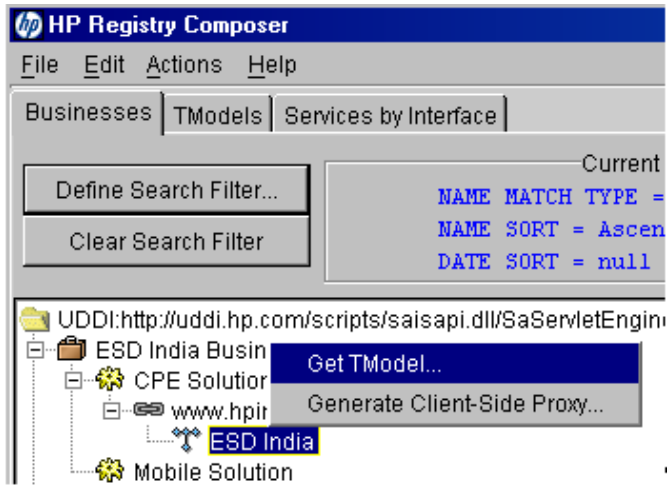


Figure 19: Pop-Up Menu Items when TModel Node is Selected

When the user right-clicks on a TModel with their mouse, a Pop-up Menu is displayed containing the following items which allow the user to view and use the TModel:

Get TModel ... – Selecting this item will cause the HP Registry Composer to inspect the “OverviewURL” attribute of the selected TModel. If this attribute contains a valid URL, the currently configured TmodelViewer (Microsoft Internet Explorer by default) will be invoked – displaying the document addressed by the OverviewURL.

Generate Client-Side Proxy ... – Selecting this item will cause the HP Registry Composer to inspect the “OverviewURL” attribute of the selected TModel and the “category” of the TModel. If the “OverviewURL” attribute contains a valid URL and the TModel is a “WSDL” document, the HP Registry Composer will display a dialog allowing the user to specify where the generated client-side Java proxy for calling the service will be written. Once the user has selected a location on disk and clicked on the dialog’s “Generate Proxy” button, the HP Registry Composer will generate a Java client-side proxy based upon the data in the TModel’s WSDL document.

“TModels” Tab

This section provides a discussion of the visual components comprising the “TModels” Tab as well as the functionality provided by the tab.

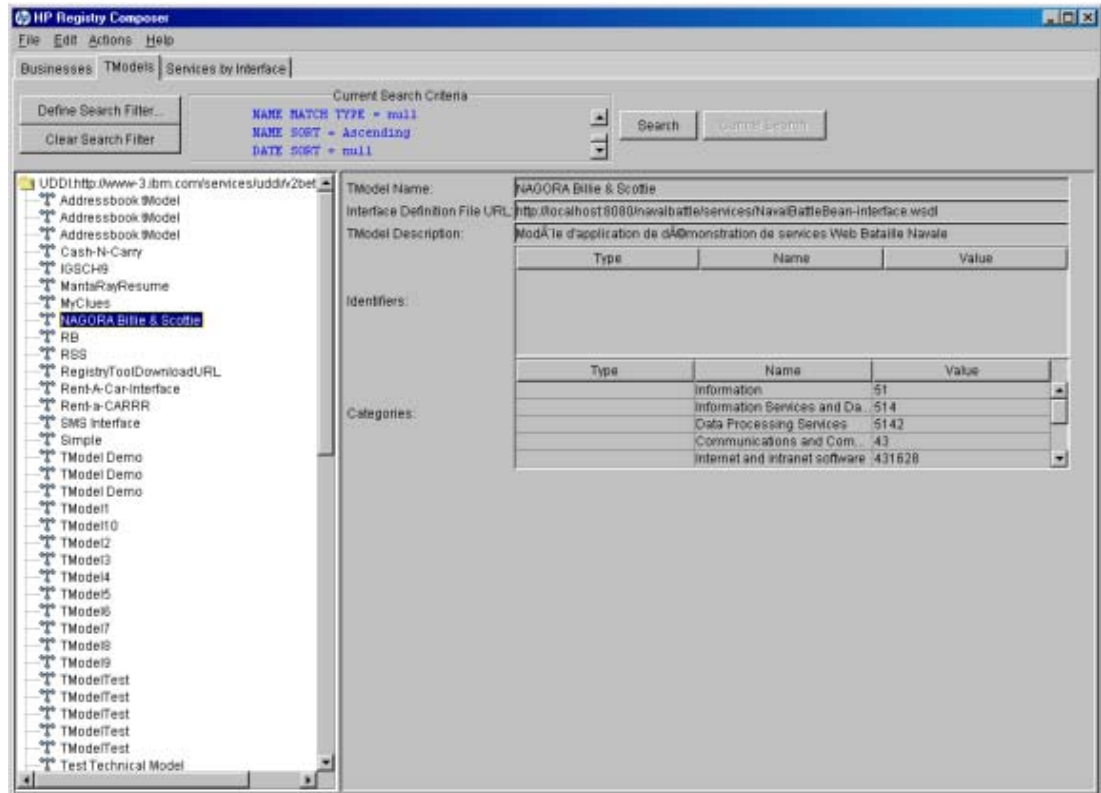


Figure 20: TModels Tab

Search Panel

The search panel is located along the top of the “TModels” tab. It provides controls allowing the user to edit the current filter being used to search for TModels in the UDDI registry. It also provides controls for starting a search and canceling a search.

“Define Search Filter” Button

Clicking on the “Define Search Filter” button will cause the “Search For TModels” Wizard to be displayed. The user can modify the search filter using this wizard. The wizard leads the user step-by-step through screens into which the search criteria are entered. On the last screen of the wizard, the user can click on the “Finish” button in order to save the changes made via the wizard. If the user clicks on “Cancel” instead, then none of the changes made through the wizard will be saved.

NOTE: Defining the search filter differs from executing a query against the UDDI registry. The search filter describes which subset of items should be retrieved from the UDDI registry, but the search is only executed against the registry when the user clicks on the “Search” button.

“Clear Search Filter” Button

Clicking on the “Clear Search Filter” button causes the current search filter to be initialized to a “default” state. This means the filter will revert to search for TModels by name, and the name field will be set to the empty string.

If the user clears the filter, the “Search” button will be disabled. Only after the user has entered a valid search filter – using the “Search For TModels” Wizard – will the “Search” button again be enabled. The tree view on the left is also cleared and initialized to the “default” state.

Current Search Criteria Display Area

The Current Search Criteria Display Area is the scrollable text area to the right of the “Define Search Filter:” and “Clear Search Filter” buttons. It displays an English version of the current search filter.

“Search” Button

If the user has specified a valid search filter, the “Search” button is enabled. If there is a search currently executing, the “Search” button is disabled until that search returns or until the user clicks on the “Cancel Search” button.

When the “Search” button is enabled and the user clicks on the button, the HP Registry Composer searches the UDDI registry for all TModels that pass the search filter previously specified by the user. While the search is ongoing, the “Cancel Search” button is enabled and the “Search” button is disabled. This allows the user to cancel the ongoing search. If the user does cancel the ongoing search before it completes, the “Search” button will be enabled again.

If the user starts a search and allows it to complete, all the TModels that passed the search filter are displayed in the tree view in the left-hand portion of the “TModels” tab.

“Cancel Search” Button

The “Cancel Search” button is used to cancel an ongoing search. The user might want to cancel a search if it has been ongoing for a long time or because they decide to change the search criteria – and, thus, no longer care about the results of the currently executing search.

The only time the “Cancel Search” button is enabled is after the user has clicked on the “Search” button and before the search (which started executing when the user clicked on the “Search” button) has returned.

TModels Tree

The “TModels” Tab contains a tree view on its left-hand side. This tree view contains all the TModels that have been retrieved most recently as a result of the user clicking on the “Search” button. Each TModel in the tree is represented by a graphical icon followed by the name of the TModel.

TModel Details Panel

See “TModel Details” within the “Businesses” Tab section of this document.

Context-Sensitive Menu Bar and Pop-up Menus

This section shows and discusses the context-sensitive “Actions” menu and the Pop-up Menu available when different types of nodes are selected within the “TModel” tab’s tree view.

Menus Available when Root of the Tree is Selected

“Actions” Menu Items

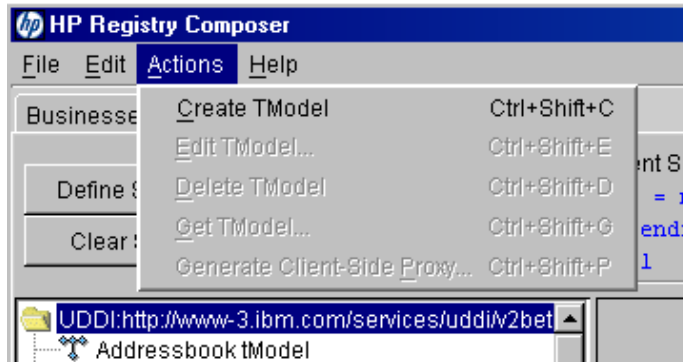


Figure 21: “Actions” Menu Items when Root of the Tree is Selected

When the root of the tree is selected, the “Actions” menu contains a “Create TModel” item. This allows the user to launch the TModel Wizard. The wizard can be used to create a new TModel within the UDDI registry – given that the user has “write” access to the registry.

NOTE: For the user to have “write” access to the UDDI registry, they have to be either logged in to the registry or connected to a registry that allows all users to have “write” access.

Pop-Up Menu Items

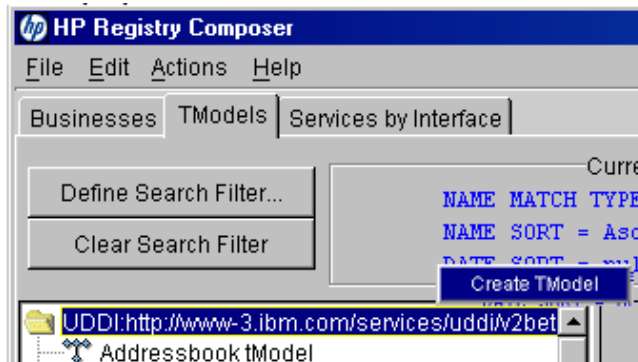


Figure 22: Pop-Up Menu Items when Root of the Tree is Selected

When the user right-clicks on the root of the tree with their mouse, a Pop-up Menu containing a “Create TModel...” item is displayed. This allows the user to launch the TModel Wizard. The wizard can be used to create a new Business TModel within the UDDI registry – given that the user has “write” access to the registry.

Menus Available when “TModel” Node is Selected

“Actions” Menu Items

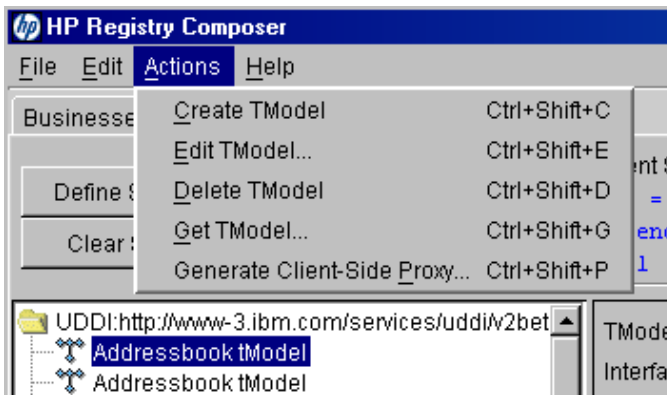


Figure 23: “Actions” Menu Items when TModel Node is Selected

When the item currently selected in the tree view is a TModel, the “Actions” menu contains the following items allowing the user to view, use, and modify data in the UDDI registry:

NOTE: The user can only modify items in the UDDI registry if they have “write” access to the registry.

Create TModel – Selecting this item will launch the TModel Wizard, allowing the user to create a new TModel in the UDDI registry.

Edit TModel ... – Selecting this item will launch the TModel Wizard, allowing the user to modify the selected TModel.

Delete TModel – Selecting this item will allow the user to delete the selected TModel. Before the item is deleted, the HP Registry Composer will display a dialog asking the user if they really want to delete the TModel.

Get TModel ... – Selecting this item will cause the HP Registry Composer to inspect the “OverviewURL” attribute of the selected TModel. If this attribute contains a valid URL, the currently configured TmodelViewer (Microsoft Internet Explorer by default) will be invoked – displaying the document addressed by the OverviewURL.

Generate Client-Side Proxy ... – Selecting this item will cause the HP Registry Composer to inspect the “OverviewURL” attribute of the selected TModel and the “category” of the TModel. If the “OverviewURL” attribute contains a valid URL and the TModel is a “WSDL” document, the HP Registry Composer will display a dialog allowing the user to specify where the generated client-side Java proxy for calling the service will be written. Once the user has selected a location on disk and clicked on the dialog’s “Generate Proxy” button, the HP Registry Composer will generate a Java client-side proxy based upon the data in the TModel’s WSDL document.

Pop-Up Menu Items

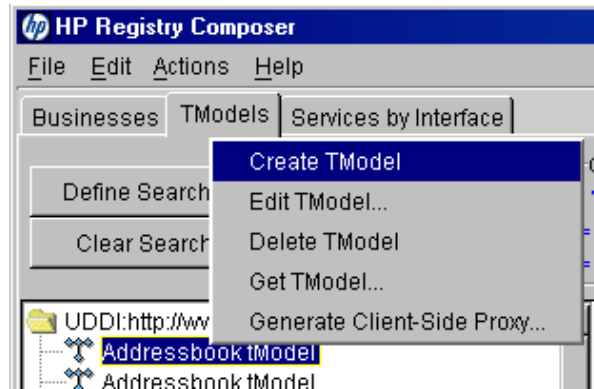


Figure 24: Pop-Up Menu Items when TModel Node is Selected

When the user right-clicks on a TModel with their mouse, a Pop-up Menu is displayed containing the following items which allow the user to view, use, and modify data in the UDDI registry:

NOTE: The user can only modify items in the UDDI registry if they have “write” access to the registry.

Create TModel – Selecting this item will launch the TModel Wizard, allowing the user to create a new TModel in the UDDI registry.

Edit TModel ... – Selecting this item will launch the TModel Wizard, allowing the user to modify the selected TModel.

Delete TModel – Selecting this item will allow the user to delete the selected TModel. Before the item is deleted, the HP Registry Composer will display a dialog asking the user if they really want to delete the TModel.

Get TModel ... – Selecting this item will cause the HP Registry Composer to inspect the “OverviewURL” attribute of the selected TModel. If this attribute contains a valid URL, the currently configured TmodelViewer (Microsoft Internet Explorer by default) will be invoked – displaying the document addressed by the OverviewURL.

Generate Client-Side Proxy ... – Selecting this item will cause the HP Registry Composer to inspect the “OverviewURL” attribute of the selected TModel and the “category” of the TModel. If the “OverviewURL” attribute contains a valid URL and the TModel is a “WSDL” document, the HP Registry Composer will display a dialog allowing the user to specify where the generated client-side Java proxy for calling the service will be written. Once the user has selected a location on disk and clicked on the dialog’s “Generate Proxy” button, the HP Registry Composer will generate a Java client-side proxy based upon the data in the TModel’s WSDL document.

“Services by Interface” Tab

This section provides a discussion of the visual components comprising the “Services by Interface” Tab as well as the functionality provided by the tab.

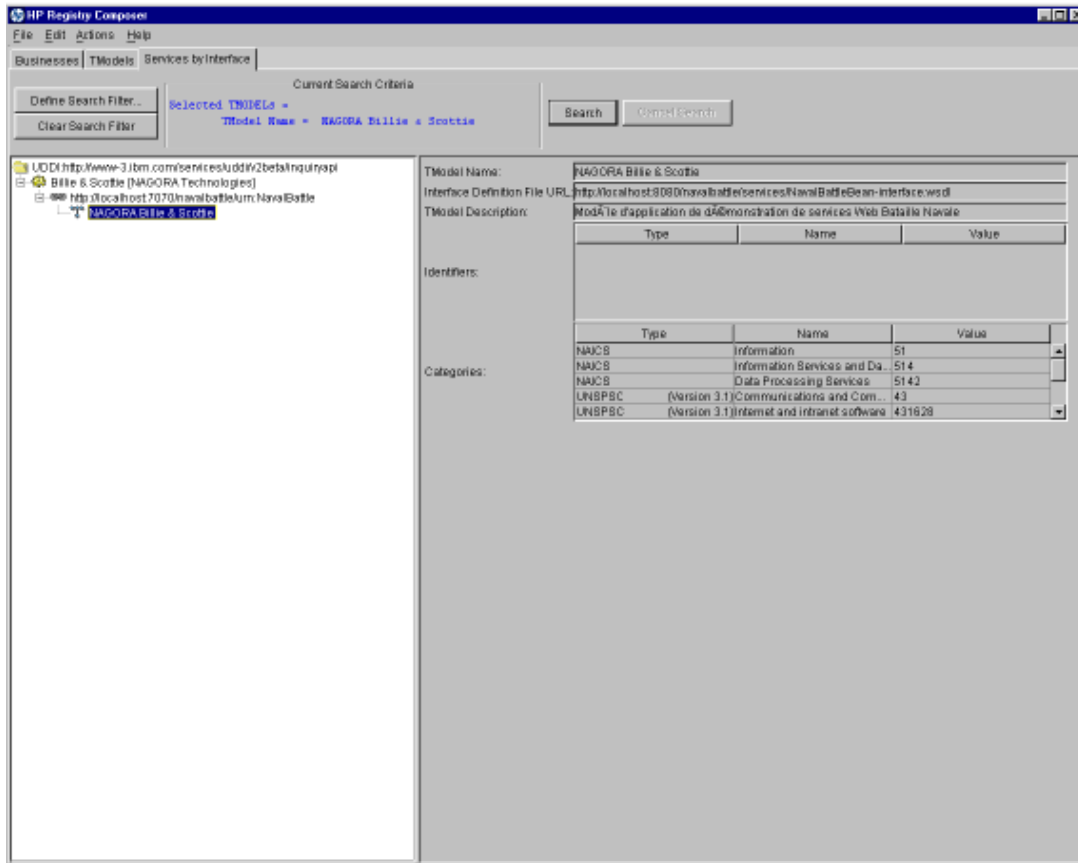


Figure 25: “Services by Interface” Tab

Search Panel

The search panel is located along the top of the “Services by Interface” tab. It provides controls allowing the user to edit the current filter being used to search for Business Services in the UDDI registry. It also provides controls for starting a search and canceling a search.

“Define Search Filter” Button

Clicking on the “Define Search Filter” button will cause the “Search For Services” Wizard to be displayed. The user can modify the search filter using this wizard. The wizard leads the user step-by-step through screens into which the search criteria are entered. On the last screen of the wizard, the user can click on the “Finish” button in order to save the changes made via the wizard. If the user clicks on “Cancel” instead, then none of the changes made through the wizard will be saved.

NOTE: Defining the search filter differs from executing a query against the UDDI registry. The search filter describes which subset of items should be retrieved from the UDDI registry, but the search is only executed against the registry when the user clicks on the “Search” button.

“Clear Search Filter” Button

Clicking on the “Clear Search Filter” button causes the current search filter to be initialized to a “default” state. This means the filter will be cleared so that it contains no references to TModels.

If the user clears the filter, the “Search” button will be disabled. Only once the user has entered a valid search filter – using the “Search For Services” Wizard – will the “Search” button again be enabled. The tree view on the left is also cleared and initialized to the “default” state.

Current Search Criteria Display Area

The Current Search Criteria Display Area is the scrollable text area to the right of the “Define Search Filter” and “Clear Search Filter” buttons. It displays an English version of the current search filter.

“Search” Button

If the user has specified a valid search filter, the “Search” button is enabled. If there is a search currently executing, the “Search” button is disabled until that search returns or until the user clicks on the “Cancel Search” button.

When the “Search” button is enabled and the user clicks on the button, the HP Registry Composer searches the UDDI registry for all Business Services that pass the search filter previously specified by the user. While the search is ongoing, the “Cancel Search” button is enabled and the “Search” button is disabled. This allows the user to cancel the ongoing search. If the user does cancel the ongoing search before it completes, the “Search” button will be enabled again.

If the user starts a search and allows it to complete, all the Business Services that passed the search filter are displayed in the tree view in the left-hand portion of the “Services by Interface” tab.

“Cancel Search” Button

The “Cancel Search” button is used to cancel an ongoing search. The user might want to cancel a search if it has been ongoing for a long time or because they decide to change the search criteria – and, thus, no longer care about the results of the currently executing search.

The only time the “Cancel Search” button is enabled is after the user has clicked on the “Search” button and before the search (which started executing when the user clicked on the “Search” button) has returned.

Services Tree

The “Services by Interface” Tab contains a tree view on its left-hand side. This tree view contains all the Business Services that have been retrieved most recently as a result of the user clicking on the “Search” button.

Each Business Service in the tree is represented by a graphical icon followed by the name of the service. Each Business Service may have a plus ‘+’ sign or a minus ‘-’ sign to its left. The plus sign indicates that there may be child Binding Template objects “owned” by the Business Service. If there are child Binding Template objects, they will be displayed when the user clicks on the plus sign. If there are child Binding Template objects displayed “under” a Business Service, that Business Service will contain a minus sign to its left. To “hide” the Binding Templates, the user can click on the minus sign.

Each Binding Template in the tree is represented by a graphical icon followed by the URL of the Binding Template. Each Binding Template may have a plus ‘+’ sign or a minus ‘-’ sign to its left. The plus sign indicates that there may be TModel objects that the Binding Template “references.” If there are TModel objects referenced by the Binding Template, they will be displayed when the user clicks on the plus sign. If there are referenced TModel objects displayed “under” a Binding Template, that Binding Template will contain a minus sign to its left. To “hide” the TModels, the user can click on the minus sign.

Each TModel in the tree is represented by a graphical icon followed by the name of the TModel.

Selected Item Detail Panel

This section shows and discusses the read-only “Details” panel that displays the currently selected UDDI object’s attributes to the right of the tree view.

Business Service Details

See “Business Service Details” within the “Businesses” Tab section of this document.

Binding Template Details

See “Binding Template Details” within the “Businesses” Tab section of this document.

TModel Details

See “TModel Details” within the “Businesses” Tab section of this document.

Context-Sensitive Menu Bar and Pop-up Menus

This section shows and discusses the context-sensitive “Actions” menu and the Pop-up Menus available when different types of nodes are selected within the “Services by Interface” tab’s tree view.

Menus Available when Root of the Tree is Selected

There are no “Action” menu items or Pop-Up Menu Items available when the root of the tree is selected.

Menus Available when “Service” Node is Selected

There are no “Action” menu items or Pop-Up Menu Items available when a “Service” node is selected.

Menus Available when “Binding” Node is Selected

There are no “Action” menu items or Pop-Up Menu Items available when a “Binding” node is selected.

Menus Available when “TModel” Node is Selected

“Actions” Menu Items

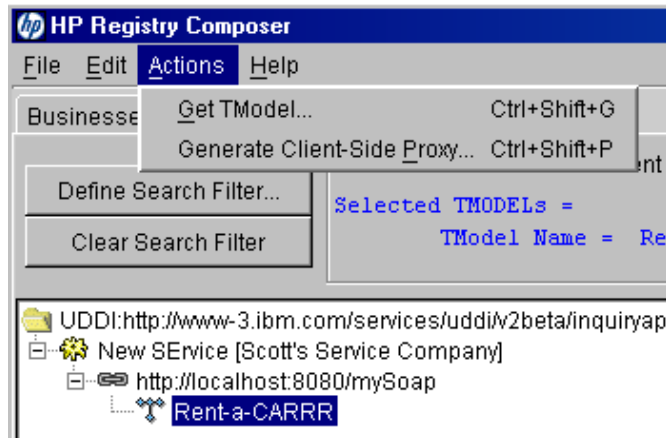


Figure 26: “Actions” Menu Items

When the item currently selected in the tree view is a TModel, the “Actions” menu contains the following items allowing the user to view and use the TModel:

Create Business – Selecting this item will launch the Business Entity Wizard, allowing the user to create a new Business Entity in the UDDI registry.

Get TModel ... – Selecting this item will cause the HP Registry Composer to inspect the “OverviewURL” attribute of the selected TModel. If this attribute contains a valid URL, the currently configured TmodelViewer (Microsoft Internet Explorer by default) will be invoked – displaying the document addressed by the OverviewURL.

Generate Client-Side Proxy ... – Selecting this item will cause the HP Registry Composer to inspect the “OverviewURL” attribute of the selected TModel and the “category” of the TModel. If the “OverviewURL” attribute contains a valid URL and the TModel is a “WSDL” document, the HP Registry Composer will display a dialog allowing the user to specify where the generated client-side Java proxy for calling the service will be written. Once the user has selected a location on disk and clicked on the dialog’s “Generate Proxy” button, the HP Registry Composer will generate a Java client-side proxy based upon the data in the TModel’s WSDL document.

Pop-Up Menu Items

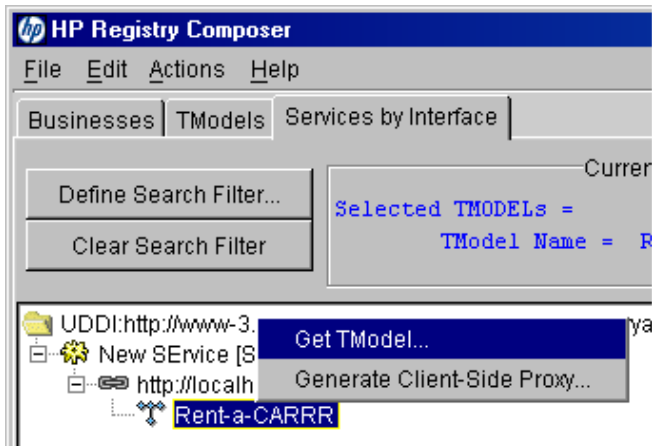


Figure 27: Pop-Up Menu Items

When the user right-clicks on a TModel with their mouse, a Pop-up Menu is displayed containing the following items which allow the user to view and use the TModel:

Get TModel ... – Selecting this item will cause the HP Registry Composer to inspect the “OverviewURL” attribute of the selected TModel. If this attribute contains a valid URL, the currently configured TmodelViewer (Microsoft Internet Explorer by default) will be invoked – displaying the document addressed by the OverviewURL.

Generate Client-Side Proxy ... – Selecting this item will cause the HP Registry Composer to inspect the “OverviewURL” attribute of the selected TModel and the “category” of the TModel. If the “OverviewURL” attribute contains a valid URL and the TModel is a “WSDL” document, the HP Registry Composer will display a dialog allowing the user to specify where the generated client-side Java proxy for calling the service will be written. Once the user has selected a location on disk and clicked on the dialog’s “Generate Proxy” button, the HP Registry Composer will generate a Java client-side proxy based upon the data in the TModel’s WSDL document.

“Identifier” Screens

Business identifiers, such as Dun & Bradstreet D-U-N-S® numbers, are one of the features provided by UDDI registries for businesses and TModels to identify themselves and for users of the UDDI registry to find businesses and TModels.

The HP Registry Composer allows users to create Business Entities and TModels. In UDDI registries, when you create (or modify) a Business Entity, you can specify zero or more identifiers that uniquely identify that Business Entity. Later, clients can search for the Business Entity by not only its name but also its identifier(s).

The way the HP Registry Composer allows a user to add identifiers to Business Entities or TModels is via an “Identifiers” Screen which is one of the screens in both the Business Entity Wizard and the TModel Wizard.

When the user is searching for a Business, they can specify “Identifier” in the first screen of the “Search For Businesses” Wizard. If they do so, the next screen displayed by the wizard will be an “Identifiers” screen – which allows the user to specify the type(s) and value(s) of one or more identifiers to be used to search for businesses. Likewise, the “Search For TModels” Wizard allows the user to search for TModels by identifier(s).

Figure 28: “Identifier” Screens

The screen shot above shows the “Identifiers” screen from the Business Entity Wizard. As you can see, each row displayed in the screen represents a single identifier. Each visible row is preceded by an X (✖) sign and contains the following fields:

Type – This is a combo-box allowing you to specify the type of the identifier. This combo box allows you to select one of the types supported by UDDI registries. The available identifier types are: DUNS, Thomas Register, and Other.

Name – This is an optional “name” for the identifier.

Value – This is a required “value” for the identifier.

Clicking on the minus sign will cause the “identifier” row to be deleted.

Clicking on the plus (⊕) sign will cause a new “identifier” row to be added – allowing you to specify another identifier.

“Categorization” Screens

Categories, such as the ISO 3166 geographic classification taxonomy, are one of the features provided by UDDI registries for businesses, services, and TModels to categorize themselves and for users of the UDDI registry to find businesses, services, and TModels.

The HP Registry Composer allows users to create Business Entities, Business Services, Binding Templates, and TModels. In UDDI registries, when you create (or modify) a Business Entity, you can specify zero or more categories that categorize that Business Entity within a specific taxonomy. Later, clients can search for the Business Entity by not only its name but also its category or categories.

The way the HP Registry Composer allows a user to add categories to Business Entities or Business Services or TModels is via a “Categorize” Screen which is one of the screens in the Business Entity Wizard, the Business Service Wizard, and the TModel Wizard.

When the user is searching for a Business Entity, they can specify “Category” in the first screen of the “Search For Businesses” Wizard. If they do so, the next screen displayed by the wizard will be a “Categories” screen – which allows the user to specify the type(s) and value(s) of one or more categories to be used to search for businesses. Likewise, the “Search For Services” Wizard and “Search For TModels” Wizard both allow the user to search for the appropriate types of UDDI objects by category.

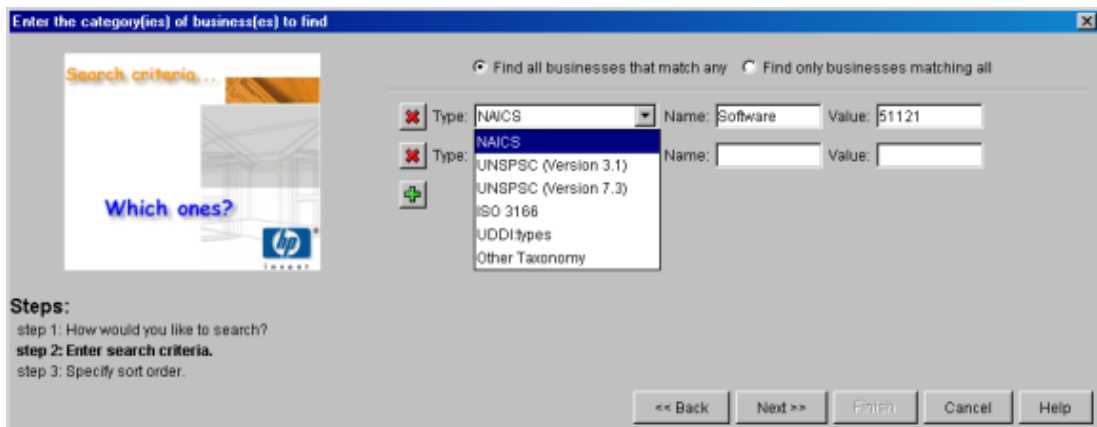


Figure 29: “Categorization” Screen

The screen shot above shows the “Categorize” screen from the Business Entity Wizard. As you can see, each row displayed in the screen represents a single category. Each visible row is preceded by a minus (–) sign and contains the following fields:

Type – This is a combo-box allowing you to specify the taxonomy. This combo box allows you to select one of the taxonomies supported by UDDI registries. The available taxonomies are: NAICS, UNSPSC, ISO 3166, UDDI:types, and Other Taxonomy.

Name – This is an optional “name” for the category within the taxonomy.

Value – This is a required “value” for the category within the taxonomy.

Clicking on the minus sign will cause the “identifier” row to be deleted. Clicking on the plus (+) sign will cause a new “identifier” row to be added, allowing you to specify another identifier.

Always Accessible Functions

Logging in to a UDDI Registry

In order to modify data within a UDDI registry, you usually have to be logged-in (authenticated). Some UDDI registries, however, don't require that you log in. Those registries allow anyone to modify anything in the registry. The HP Registry Composer works with registries that require you to log in as well as those that don't require you to log in.

To log in to a UDDI registry using the HP Registry Composer, the user selects "Log In" from the "File" menu. This causes the "Login" Dialog to be displayed. You enter your user id and password into the dialog and then click the "OK" button. If you entered a valid user id and password for the UDDI registry to which the Registry Composer is pointed, you will be shown a message box indicating that you were successfully logged in. Otherwise, you will be shown an error message.

Once you have logged into a UDDI registry, you can modify any items "owned" by you. What this means is that you can modify your Business Entity (or Business Entities) and any Business Services and Binding Templates underneath each Business Entity that you own. Each registry can have its own "account limits" that constrain the number of Business Entities, Business Services, Binding Templates, and TModels that you can create. Public registries – available to anyone over the Internet – typically follow the account limit guidelines specified by the UDDI Operator's documentation. Private registries, however, can set their own account limits.

The way you originally create a user id and password for a UDDI registry depends on which registry you are using. Each of the public UDDI registries provides a URL that you can point your browser to and create an account for yourself. Since each UDDI registry's implementation for this varies, the details for creating an account at a public UDDI registry aren't covered in this document.

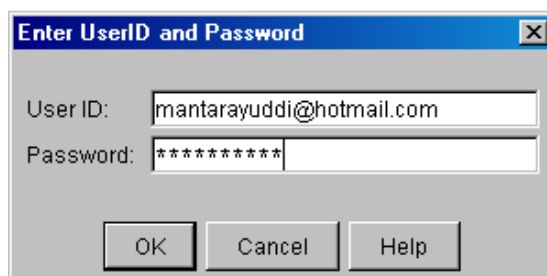


Figure 30: "Login" Dialog

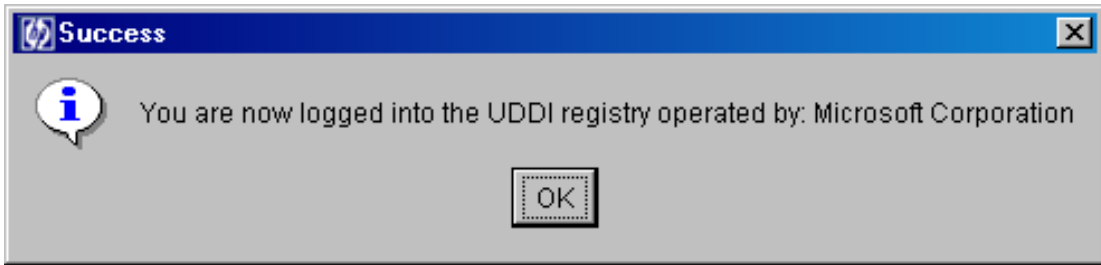


Figure 31: “Logged In” Message Box

Viewing and Modifying the Registry Composer’s Settings

You can modify the configuration of the HP Registry Composer through the “Edit Registry Composer Settings” dialog. You can access this dialog by selecting “Settings” from the “Edit” menu. Any changes that you make to the HP Registry Composer’s settings are only saved if you click the “OK” button when you are finished.

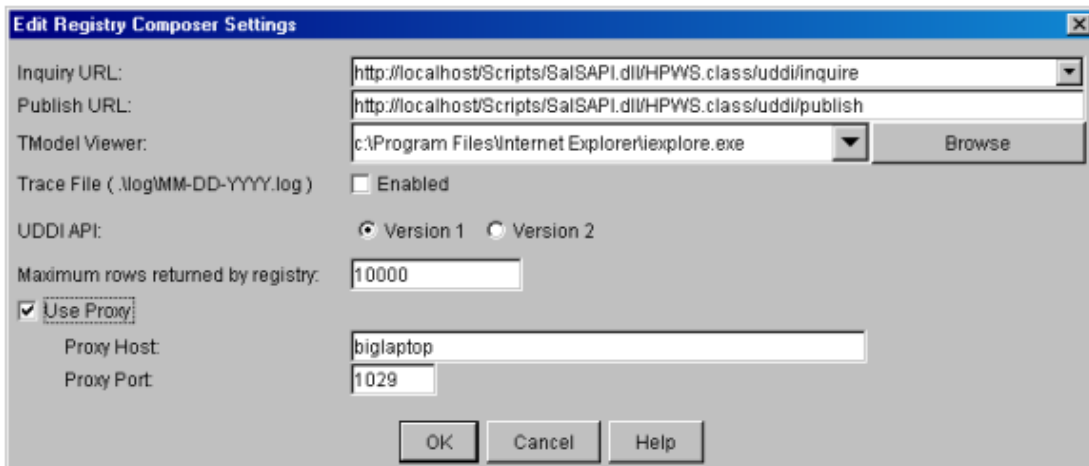


Figure 32: Settings Dialog

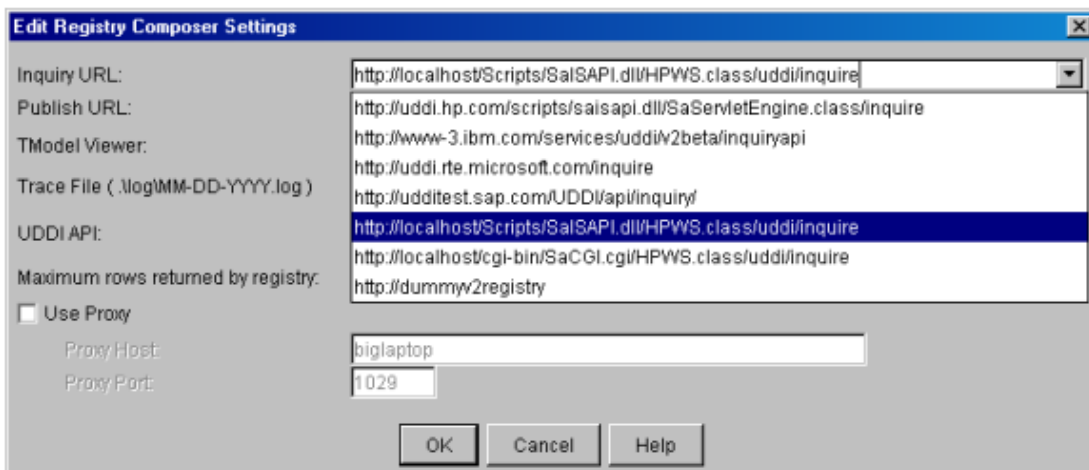


Figure 33: “Inquiry URL” Combo-Box from the Settings Dialog

Fields in the Settings Dialog

Inquiry URL

This drop-down combo-box allows you to choose one of the pre-configured UDDI registry URLs. Basically, choosing a URL from this list “points” the HP Registry Composer to a different registry. The URLs in this list are the “inquiry” URLs for UDDI registries. Each “inquiry” URL has a corresponding “publish” URL that allows you to publish data into the same UDDI registry. In fact, each time you select a URL from the drop-down list, you will see its corresponding “publish” URL output into the “Publish URL” field.

Some UDDI registries have the same URL for inquiry and publish operations. Others have one for inquiries and another for publishing. If you don't find the URL you want in this list, you can just type any URL into the field. Then when you click on “OK”, the URL you typed in will become the currently selected UDDI registry “inquiry” URL and will also be remembered in the Registry Composer's configuration file.

The Registry Composer allows you to modify the set of “inquiry” and “publish” URLs shown in this dialog. See the “Modifying the UDDI URLs Displayed in the Settings Dialog” section below for more details.

Publish URL

This is the UDDI registry's URL for modifying its contents. When you add, modify, or delete items using the Registry Composer, this is the URL that the tool uses to make those changes to the UDDI registry. You usually don't type anything into this field. This field is usually populated with the correct URL when you select an “inquiry” URL from the “Inquiry URL” combo-box. However, if you want to specify a URL other than the one currently shown in the “Publish URL” field, you can type in any URL you want. Then when you click on “OK”, the URL you typed in will become the currently selected UDDI registry “publish” URL and will also be remembered in the Registry Composer's configuration file.

TModel Viewer

This is the fully qualified path and file name of the viewer that will be launched to display a TModel if you select **Get TModel** from the **Actions** menu or from the context-sensitive pop-up menu. By default, this is Microsoft Internet Explorer. But you can change it to any application that you can launch and to which you can pass a URL as its first command-line parameter.

Use Proxy

This checkbox is checked when you want to use a web proxy to access the UDDI registry. You need to uncheck this box in order to bypass the web proxy and access the UDDI registry directly from your network.

Proxy Host

This is the name of the HTTP proxy that you need to use to access servers on the Internet. If an HTTP proxy isn't required in order for your computer to access the Internet, you can set this field to blank.

Proxy Port

This field contains the port number that you need to connect to on the HTTP proxy. If there is no value in the "Proxy Host" field, then the value in this field isn't used.

Trace File

This checkbox indicates whether or not tracing is enabled. When tracing is enabled, there will be a file created within the "log" subdirectory (this subdirectory is directly beneath the directory from which you are running the HP Registry Composer), and all UDDI XML messages that flow between the tool and the UDDI registry will be logged into that file. A new file is created each day. The name of each trace file contains the date that the file was created and written to.

UDDI API

These radio buttons allow you to specify whether you want the tool to use the Version 1 UDDI API or the Version 2 UDDI API to communicate with the UDDI registry. By default, the HP Registry Composer "knows" which API to use because it has been specified in the configuration file from which the "inquiry" and "publish" URLs are retrieved. However, the "UDDI API" radio buttons allow you to override the defaults at any time.

Maximum rows returned by registry

This is where you specify the maximum number of rows to display as a result of a "Search." If you enter "0" into this text box, then all rows will be returned.

Modifying the UDDI URLs Displayed in the Settings Dialog

The list of Inquiry and Publish UDDI registry URL's available from the Settings dialog can be configured at any time. To modify this list of URL's, use a text editor to modify the "UDDI-URLs.xml" file. The file can be found in the "config" directory.

UDDI-URLs.xml file:

```
<?xml version="1.0" encoding="UTF-8"?>
<ToolUDDIUrls xmlns="urn:hp-uddi-tool">
  <InquiryURLs>
    <ToolURL uddiVersion="1">http://www-3.ibm.com/services/uddi/
testregistry/inquiryapi</ToolURL>
    <ToolURL uddiVersion="1">http://test.uddi.microsoft.com/inquire</
ToolURL>
    <ToolURL uddiVersion="1">http://red-bell.red.hp.com/Scripts/
SaISAPI.dll/SaServletEngine.class/uddi/inquire</ToolURL>
    <ToolURL uddiVersion="1">http://localhost:8080/myuddi/servlet/
uddi</ToolURL>
    <ToolURL uddiVersion="1">http://15.0.94.138:8080/myuddi/servlet/
uddi</ToolURL>
    <ToolURL uddiVersion="2">http://localhost/scripts/SaISAPI.dll/HPWS.class/
SOAP/service/doc/UDDI</ToolURL>
    <ToolURL uddiVersion="2">http://dummyv2registry.com</ToolURL>
  </InquiryURLs>
  <PublishURLs>
    <ToolURL>https://www-3.ibm.com/services/uddi/testregistry/protect/
publishapi</ToolURL>
    <ToolURL>https://test.uddi.microsoft.com/publish</ToolURL>
    <ToolURL>http://red-bell.red.hp.com/Scripts/SaISAPI.dll/
SaServletEngine.class/uddi/inquire</ToolURL>
    <ToolURL>http://15.0.94.138:8080/myuddi/servlet/uddi</ToolURL>
    <ToolURL>http://localhost/scripts/SaISAPI.dll/HPWS.class/SOAP/
service/doc/UDDI</ToolURL>
    <ToolURL>http://dummyV2Registry</ToolURL>
  </PublishURLs>
</ToolUDDIUrls>
```

As you can see, this is an XML document. Each of the URL's that show up in the "Inquiry URL" combo-box from the Settings Dialog comes from the **<ToolURL>** elements contained within the **<InquiryURLs>** element. Each **<ToolURL>** element contained within the **<InquiryURLs>** element has a **uddiVersion** attribute – which can contain a value of "1" or "2". This attribute tells the tool whether the URL points to a UDDI registry that understands the UDDI version 1.0 API or the UDDI version 2.0 API.

As you can see by using the Settings Dialog, each time you select an "inquiry" URL from the "Inquiry URL" combo-box, a corresponding "publish" URL is shown in the "Publish URL" field. This corresponding "publish" URL comes from the "UDDI-URLs.xml" file as well. In fact, each **<ToolURL>** element contained within the **<InquiryURLs>** element has a corresponding "publish" URL contained at the same position within the **<PublishURLs>** element.

To add a new UDDI URL to your Settings Dialog, simply add a new **<ToolURL>** element to the **<InquiryURLs>** element and another (in the same position) in the **<PublishURLs>** element. Then save the file. The next time you start the HP Registry Composer, you will be able to select this new URL from the Settings Dialog.

Modifying the UDDI Taxonomies

The list of Identifier and Category values available in the combo-boxes in the Search and Edit wizards can be configured at any time. To modify this list, use a text editor to modify the **UDDI-Taxonomies.xml** file. The file can be found in the `config` directory.

```
<?xml version="1.0" encoding="UTF-8" ?>
<ToolUDDITaxonomies xmlns="urn:hp-uddi-tool">
  <IdentifierTypes>
    <Type uuidValue="UUID:8609C81E-EE1F-4D5A-B202-3EB13AD01823">DUNS</Type>
    <Type uuidValue="UUID:B1B1BAF5-2329-43E6-AE13-BA8E97195039">Thomas
Register</Type>
    <Type uuidValue="UUID:327A56F0-3299-4461-BC23-5CD513E95C55">Operators</Type>
  </IdentifierTypes>
  <CategoryTypes>
    <Type uuidValue="UUID:C0B9FE13-179F-413D-8A5B-5004DB8E5BB2">NAICS</Type>
    <Type uuidValue="UUID:db77450d-9fa8-45d4-a7bc-04411d14e384">UNSPSC (Version
3.1)</Type>
    <Type uuidValue="UUID:CD153257-086A-4237-B336-6BDCBDC6634">UNSPSC (Version
7.3)</Type>
    <Type uuidValue="UUID:4E49A8D6-D5A2-4FC2-93A0-0411D8D19E88">ISO 3166</Type>
    <Type uuidValue="UUID:C1ACF26D-9672-4404-9D70-39B756E62AB4">UDDI:types</
Type>
    <Type uuidValue="UUID:A035A07C-F362-44DD-8F95-E2B134BF43B4">Other Taxonomy</
Type>
  </CategoryTypes>
</ToolUDDITaxonomies>
```

As you can see, this is an XML document. Each of the Identifier or Category types that show up in the combo-box in the Search or Edit wizards comes from the **<Type>** elements contained within the **<IdentifierTypes>** or **<CategoryTypes>** element. Each **<Type>** element has a `uuidValue` attribute – which is the uuid-key for that particular Identifier or Category type.

To add a new Identifier or Category type to the combo-boxes, simply add a new **<Type>** element to the **<IdentifierTypes>** element or **<CategoryTypes>** element with a valid UUID key value in the `uuidValue` attribute. Then save the file. The next time you start the HP Registry Composer, you will be able to select this new Identifier or Category type from the combo-box in the Search or Edit Wizards.

Viewing a TModel's Web Page or WSDL File

Step 1: Right-Click on a TModel in Any of the 3 Tabs

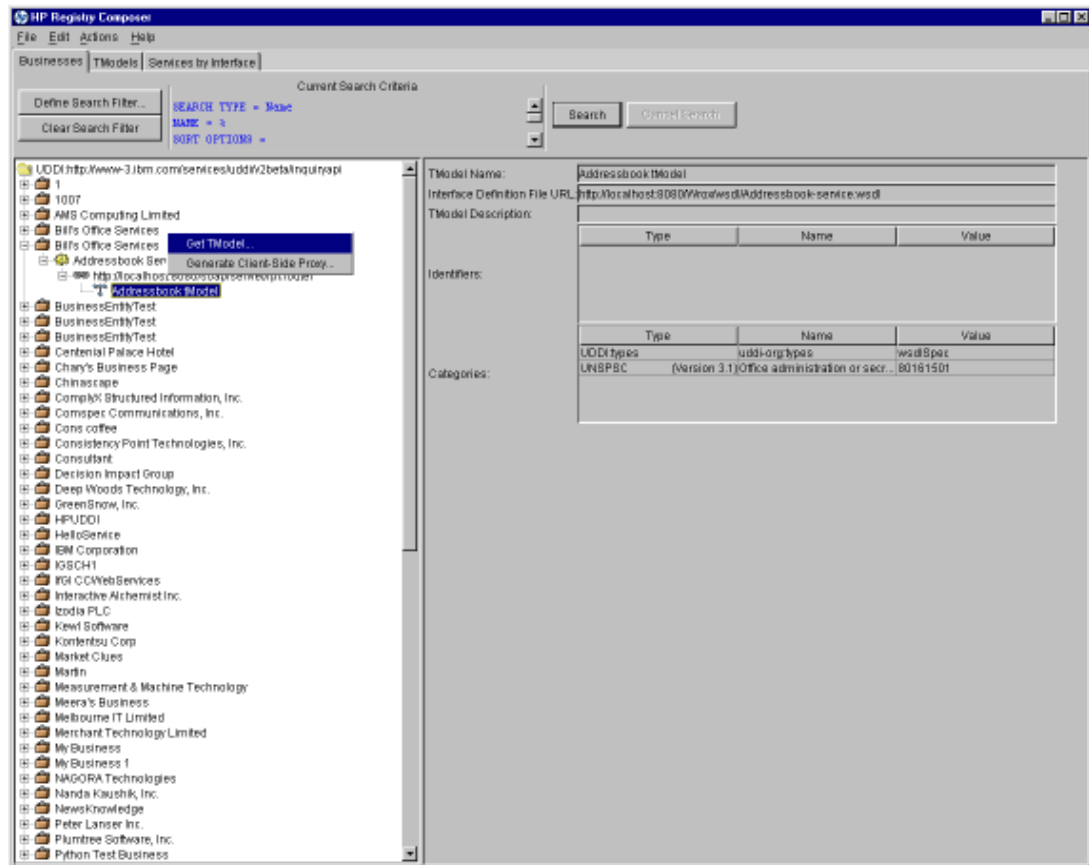


Figure 34: Viewing a TModel's Web Page or WSDL File, step 1

Step 2: Select “Get TModel...” From the Pop-Up Menu

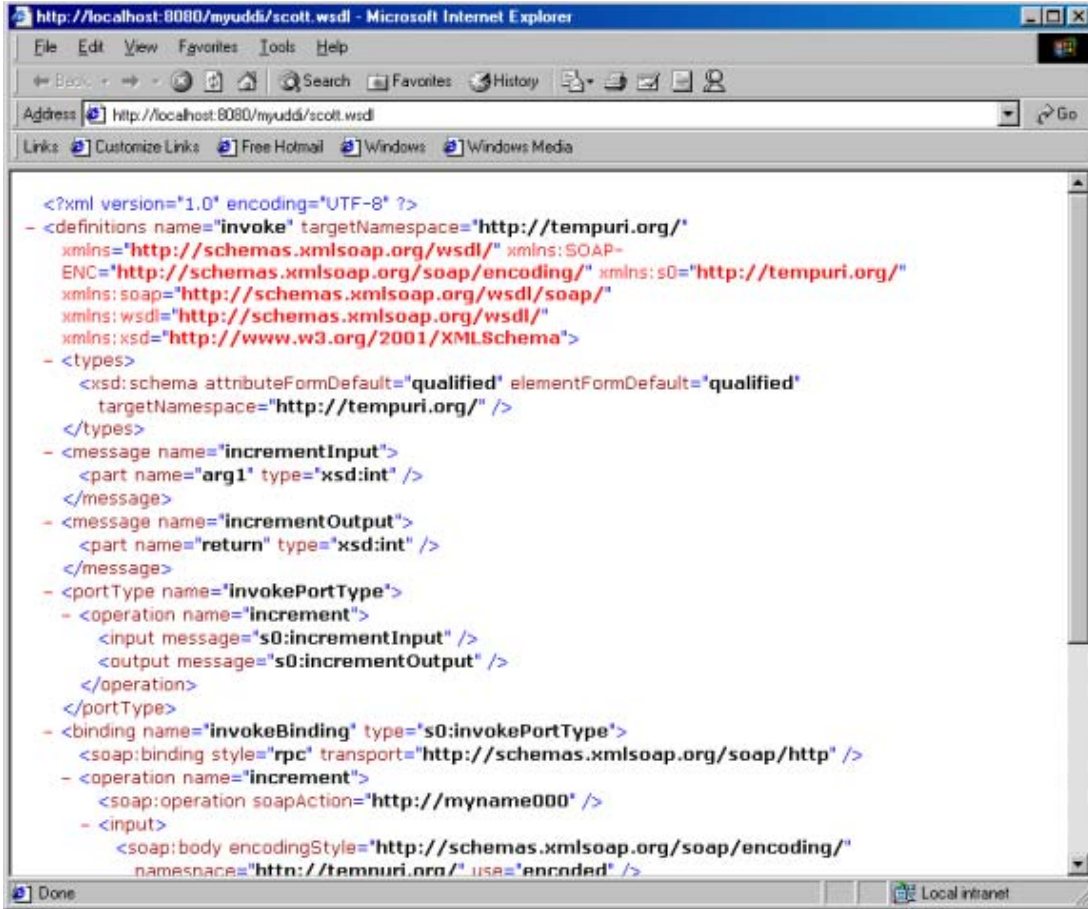


Figure 35: Viewing a TModel's Web Page or WSDL File, step 2

Context Sensitive Functions

Browsing Functions

How to Search for Businesses

To search for Business Entities, you must first select the “Businesses” tab of the HP Registry Composer. Then click on the “Define Search Filter” button along the top of the tab – which will bring up the “Search For Businesses” Wizard. The following three sections illustrate the three different types of search filters you can use to find Business Entities.

Searching by Name

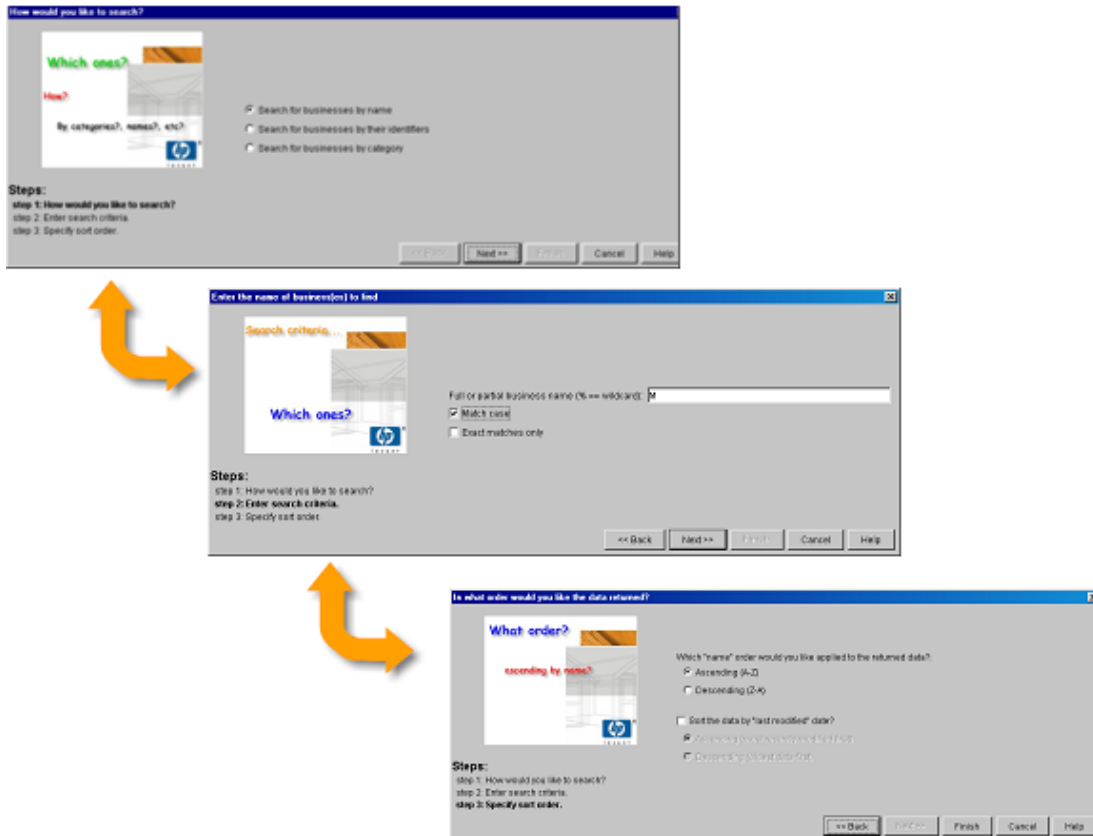


Figure 36: Searching for Businesses by Name

If you select the “Search for businesses by Name” radio button from the first screen in the search wizard, you will be able to specify a “Search By Name” filter for finding Business Entities.

Clicking on the “Next>>” button will bring you to the “Enter Name of Business(es)...” screen. In this screen, you can type a partial or full name for the business(es) to find. You can also click on the “Match case” check box if you want to retrieve only those businesses whose names match, by case, exactly what you have typed. You can also click on the “Exact matches only” checkbox if you want to retrieve only those businesses whose entire name matches every character you typed into the “Name” field. If, however, you want to find those businesses that start with the characters you typed, then don’t check the “Exact matches only” check box.

Clicking on the “Next>>” button again will bring you to the “Sort Options” screen. This allows you to specify how to sort the returned Business Entities. To save your search filter, click on the “Finish” button from this screen.

Once you have saved your search filter, you can execute the search by clicking on the “Search” button.

Searching by Identifier(s)



Figure 37: Searching for Businesses by Identifiers

If you select the “Search for businesses by their Identifier” radio button from the first screen in the search wizard, you will be able to specify a “Search By Identifier” filter for finding Business Entities.

Clicking on the “Next>>” button will bring you to the “Specify Search Identifiers” screen. (See the ““Identifier” Screens” section for details about how to navigate and use this screen.) From this screen, you can specify the one or more identifiers you want to use to search for Business Entities. If you are connected to a Version 1 UDDI registry, then the filter will only allow you to specify a “find all businesses that are identified by any of these identifiers” type of filter. However, if you are connected to a Version 2 UDDI registry, you can specify whether you want only those businesses that are identified by all the identifiers you entered into this screen or all businesses that are identified by any of them. You specify this behavior by clicking on the appropriate radio button along the top of the screen.

Clicking on the “Next>>” button again will bring you to the “Sort Options” screen. This allows you to specify how to sort the returned Business Entities. To save your search filter, click on the “Finish” button from this screen.

Once you have saved your search filter, you can execute the search by clicking on the “Search” button.

Searching by Category/Categories

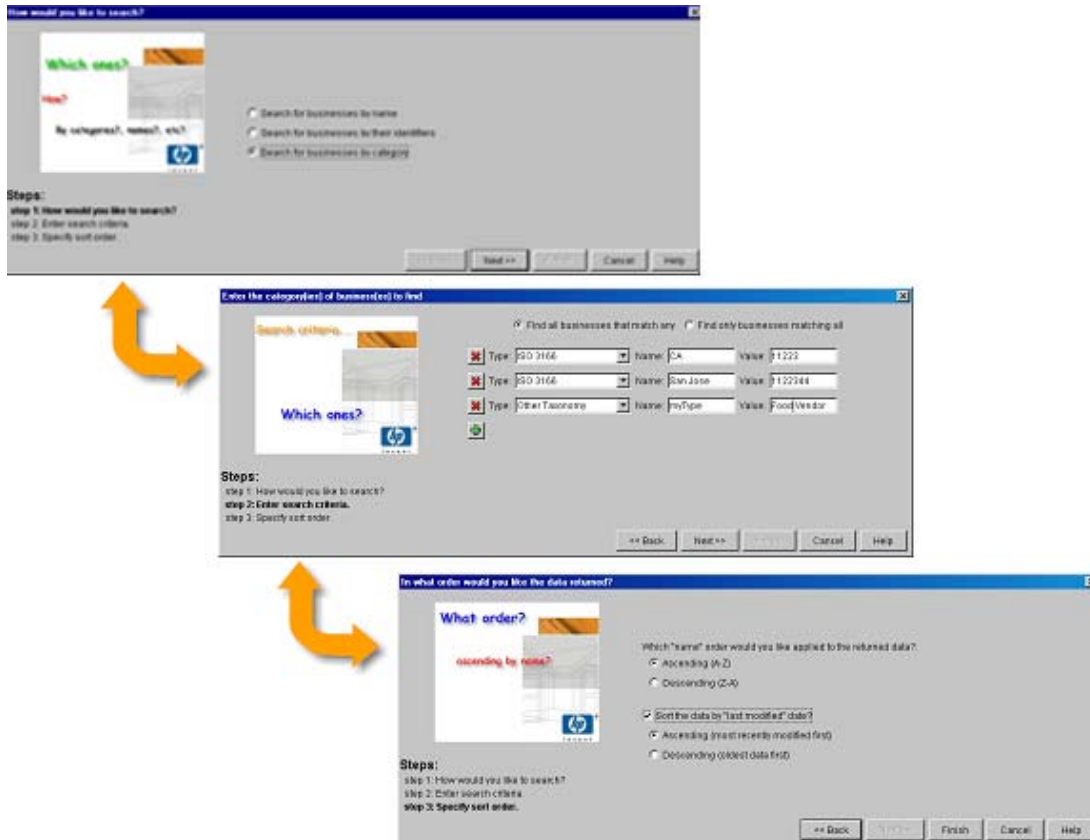


Figure 38: Searching for Businesses by Category

If you select the “Search for businesses by Category” radio button from the first screen in the search wizard, you will be able to specify a “Search By Identifier” filter for finding Business Entities.

Clicking on the “Next>>” button will bring you to the “Specify Search Categories” screen. (See the ““Categorization” Screens” section for details about how to navigate and use this screen.) From this screen, you can specify the one or more categories you want to use to search for Business Entities. If you are connected to a Version 1 UDDI registry, then the filter will only allow you to specify a “find all businesses that are identified by any of these categories” type of filter. However, if you are connected to a Version 2 UDDI registry, you can specify whether you want only those businesses that are identified by all the categories you entered into this screen or all businesses that are identified by any of them. You specify this behavior by clicking on the appropriate radio button along the top of the screen.

Clicking on the “Next>>” button again will bring you to the “Sort Options” screen. This allows you to specify how to sort the returned Business Entities. To save your search filter, click on the “Finish” button from this screen.

Once you have saved your search filter, you can execute the search by clicking on the “Search” button.

Searching for Services

To search for Services, you must select the “Services by Interface” tab of the HP Registry Composer. Then you click on the “Define Search Filter” button along the top of the tab – which will bring up the “Search For Services” Wizard (shown below).

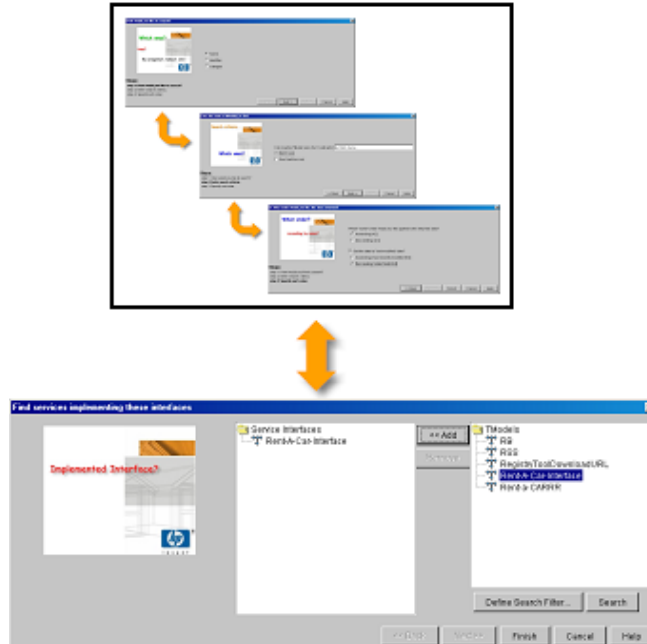


Figure 39: Searching for Services

This wizard allows users to specify a search filter for finding all those Business Services that implement a specific set of technical “interfaces.” For example, you could use this to find all the Business Services that implement a specific RosettaNet PIP. In UDDI registries, each technical interface is represented by a TModel. Therefore, this wizard allows the user to construct a list of TModels that fully describe the Business Service(s) to retrieve.

This screen allows you to search for TModels using the right-hand side’s “Define Search Filter” and “Search” buttons and its list. When you click on the “Define Search Filter” button, the “Search For TModels” Wizard is displayed. (This is the same “Search For TModels” wizard that you can use in the “TModels” tab.) Once you have specified which TModels to search for, you click on the “Search” button – which causes the matching TModels to be retrieved and placed into the list at the right.

The left-hand list is what you use as your “shopping cart” of TModels that fully describe the service interfaces you are seeking. You add a TModel to this list by first clicking on it in the right-hand list and then clicking on the “<<Add” button. You remove a TModel from the “shopping cart” by selecting it in the left-hand list and then clicking on the “Remove” button.

Once you have completed constructing your “shopping cart” of TModels that describe the service(s) you want, save your filter by clicking on the “Finish” button. Once you have saved your search filter, you can execute the search by clicking on the “Search” button.

Searching for TModels

To search for TModels, you must have the “TModels” tab of the HP Registry Composer selected. Then you click on the “Define Search Filter:” button along the top of the tab – which will bring up the “Search For TModels” Wizard. The following three sections illustrate the three different types of search filters you can use to find TModels.

Searching by Name

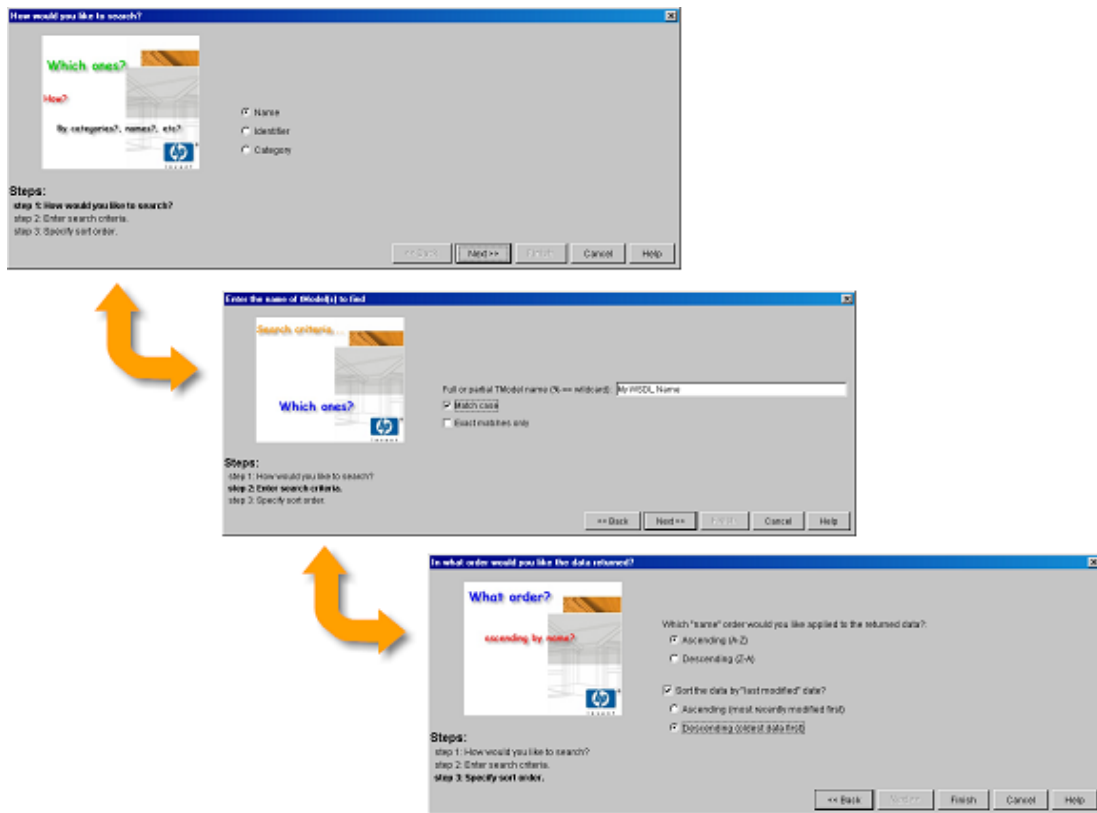


Figure 40: Searching for TModels by Name

If you select the “Name” radio button from the first screen in the search wizard, you will be able to specify a “Search By Name” filter for finding TModels.

Clicking on the “Next>>” button will bring you to the “Enter Name of TModel(s)...” screen. In this screen, you can type a partial or full name for the TModel(s) to find. You can also click on the “Match case” check box if you want to retrieve only those TModels whose names match, by case, exactly what you have typed. You can also click on the “Exact matches only” checkbox if you want to retrieve only those TModels whose entire name matches each and every character you typed into the “Name:” field. If, however, you want to find those TModels that start with the characters you typed, then don’t check the “Exact matches only” check box.

Clicking on the “Next>>” button again will bring you to the “Sort Options” screen. This allows you to specify how to sort the returned TModels. To save your search filter, click on the “Finish” button from this screen. Once you have saved your search filter, you can execute the search by clicking on the “Search” button.

Searching by Identifier(s)

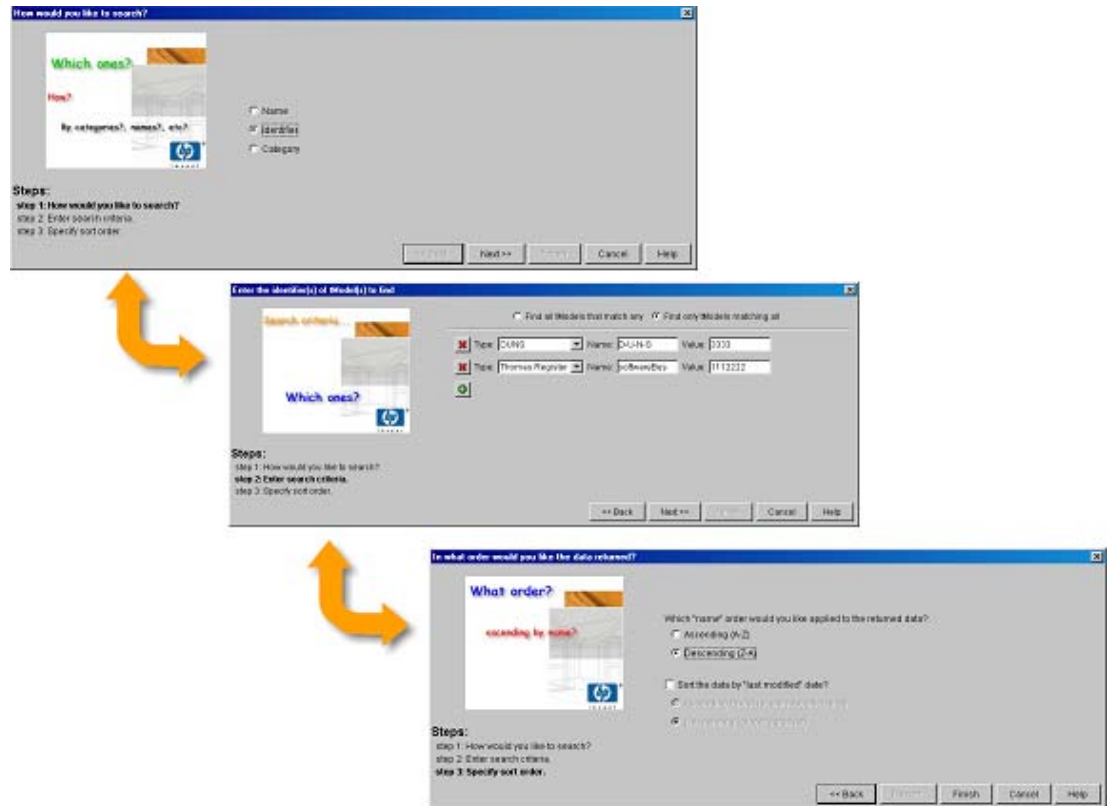


Figure 41: Searching for TModels by Identifiers

If you select the “Identifier” radio button from the first screen in the search wizard, you will be able to specify a “Search By Identifier” filter for finding TModels.

Clicking on the “Next>>” button will bring you to the “Specify Search Identifiers” screen. (See the ““Identifier” Screens” section for details about how to navigate and use this screen.) From this screen, you can specify the one or more identifiers you want to use to search for TModels. If you are connected to a Version 1 UDDI registry, then the filter will only allow you to specify a “find all TModels that are identified by any of these identifiers” type of filter. However, if you are connected to a Version 2 UDDI registry, you can specify whether you want only those TModels that are identified by all the identifiers you entered into this screen or all TModels that are identified by any of them. You specify this behavior by clicking on the appropriate radio button along the top of the screen.

Clicking on the “Next>>” button again will bring you to the “Sort Options” screen. This allows you to specify how to sort the returned TModels. To save your search filter, click on the “Finish” button from this screen.

Once you have saved your search filter, you can execute the search by clicking on the “Search” button.

Searching by Category/Categories

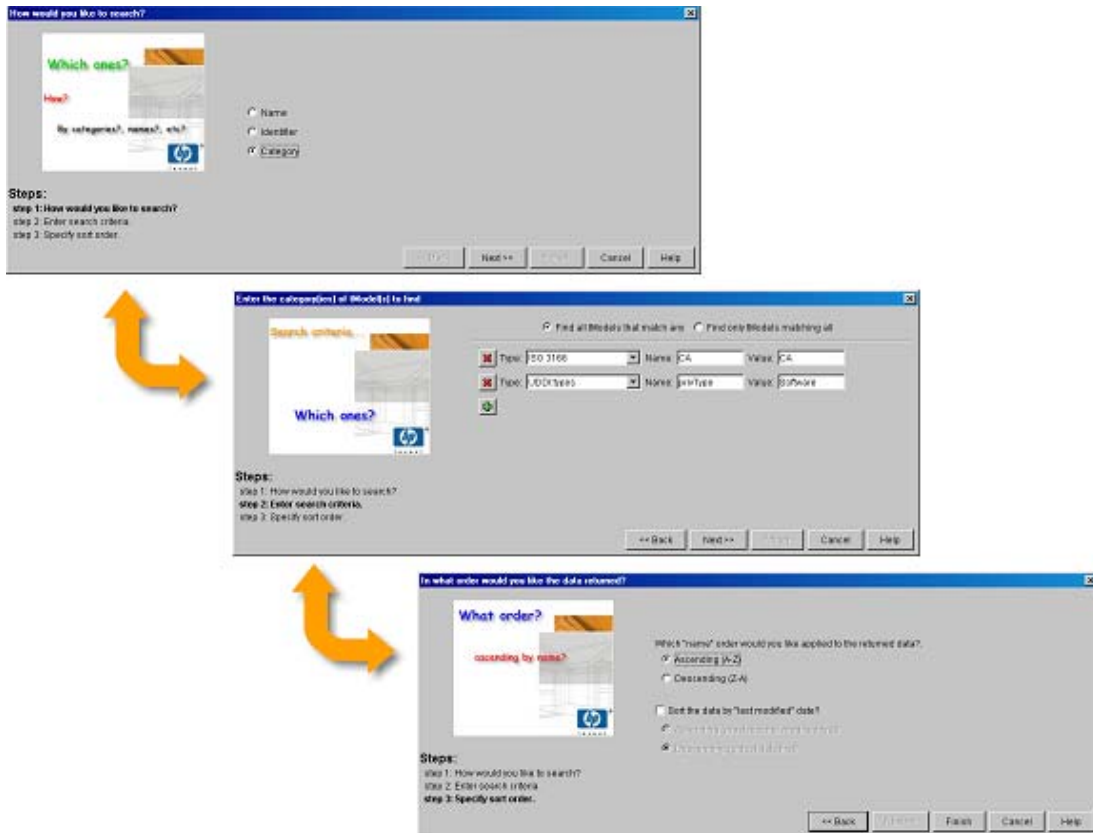


Figure 42: Searching for TModels by Categories

If you select the “Category” radio button from the first screen in the search wizard, you will be able to specify a “Search By Identifier” filter for finding TModels.

Clicking on the “Next>>” button will bring you to the “Specify Search Categories” screen. (See the ““Categorization” Screens” section for details about how to navigate and use this screen.) From this screen, you can specify the one or more categories you want to use to search for TModels. If you are connected to a Version 1 UDDI registry, then the filter will only allow you to specify a “find all TModels that are identified by any of these categories” type of filter. However, if you are connected to a Version 2 UDDI registry, you can specify whether you want only those TModels that are identified by all the categories you entered into this screen or all TModels that are identified by any of them. You specify this behavior by clicking on the appropriate radio button along the top of the screen.

Clicking on the “Next>>” button again will bring you to the “Sort Options” screen. This allows you to specify how to sort the returned TModels. To save your search filter, click on the “Finish” button from this screen.

Once you have saved your search filter, you can execute the search by clicking on the “Search” button.

Publishing Functions

Creating, Modifying, and Deleting Business Entities

How to Create a New Business Entity

To create a new Business Entity from within the HP Registry Composer, select the “Businesses” Tab. Once you have the “Businesses” tab selected, you will be able to create a new Business Entity using the Business Entity Wizard. The Business Entity Wizard can be launched in a number of ways. One way is by selecting “Create New Business” from the “Actions” menu. Another way to launch the Business Entity Wizard is from the Pop-up Menu available when you right-click on the root node of the tree view.

Regardless of the technique you use to launch the Business Entity Wizard, once it is displayed it will lead you through three easy-to-use screens for entering the attributes of the new Business Entity. When you are finished entering data, simply click on the “Finish” button from the last screen of the wizard and your new Business Entity will be saved to the UDDI registry.

How to Modify an Existing Business Entity

To edit an existing Business Entity from within the HP Registry Composer, select the “Businesses” Tab, and you select the Business Entity to edit in the tree view. Once you have done this, you can edit the Business Entity using the Business Entity Wizard. You can launch the wizard in two different ways. First, you can launch the wizard by selecting “Edit Business Entity...” from the “Actions” menu. Secondly, you can launch the wizard by right-clicking on the Business Entity and then selecting “Edit Business Entity...” from the pop-up menu.

Regardless of the technique you use to launch the Business Entity Wizard, once it is displayed, it will lead you through three easy-to-use screens for modifying the attributes of the Business Entity. When you are finished entering data, simply click on the “Finish” button from the last screen of the wizard and the edits to your Business Entity will be saved to the UDDI registry.

How to Delete a Business Entity

To delete a Business Entity from within the HP Registry Composer, select the “Businesses” Tab and select the Business Entity to delete in the tree view. Once you have done this, you can delete the Business Entity one of two ways. First, you can select “Delete Business Entity” from the “Actions” menu. Secondly, you can right-click on the Business Entity and then select “Delete Business Entity” from the pop-up menu.

Regardless of the technique you use to delete the Business Entity, the HP Registry Composer will display the following dialog prior to actually deleting the Business Entity. If you click on the “OK” button of the dialog, the Business Entity will be deleted from the UDDI registry.

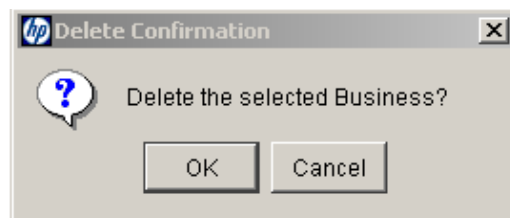


Figure 43: Deleting a Business Entity

The “Business Entity” Wizard

The screen shot below shows the screens that comprise the Business Entity Wizard. Subsequent sections describe each screen in detail.

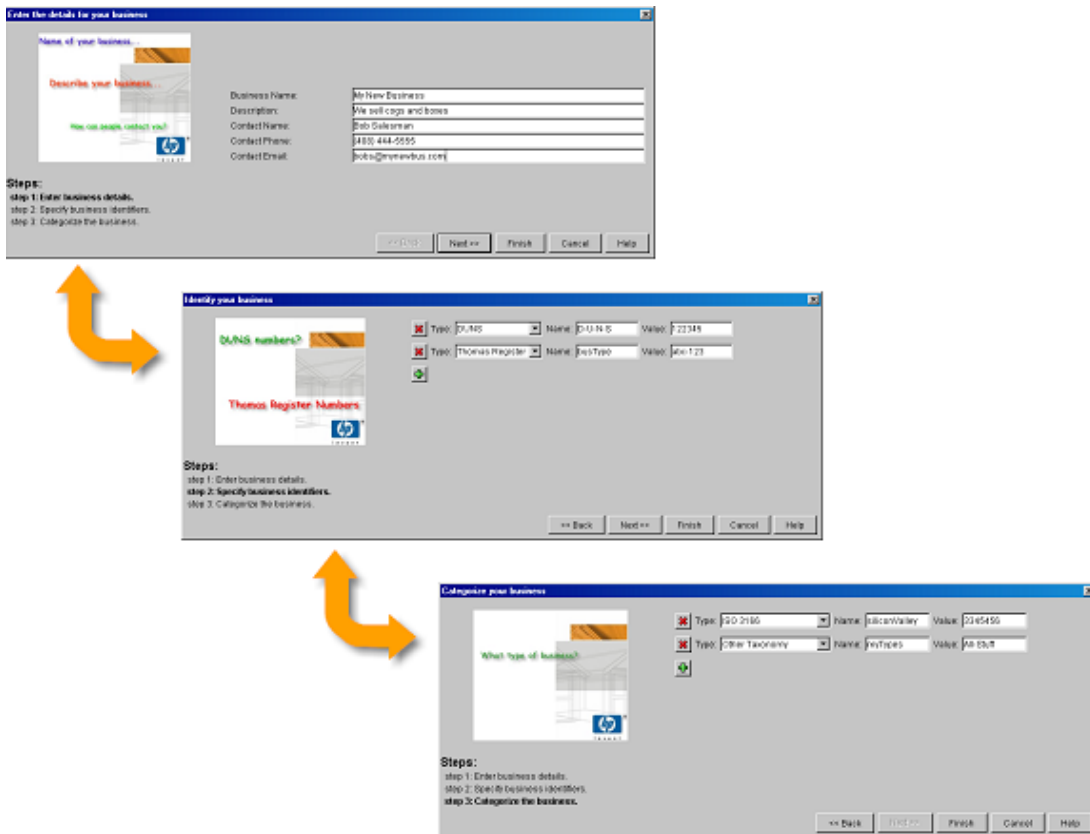


Figure 44: The Business Entity Wizard

Business Entity Attributes Screen

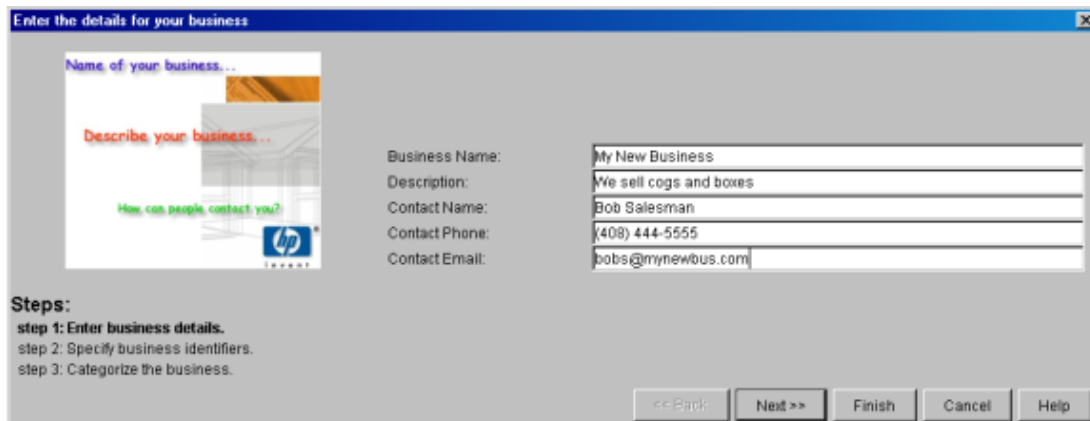


Figure 45: The “Business Entity Attributes” Screen

The “Business Entity Attributes” Screen allows you to enter the following text attributes for the Business Entity:

- **Business Name** – The name of the business.
- **Description** – A short description of the business.
- **Contact Name** – The name of a contact at the business.
- **Contact Phone** – The phone number of the business' contact.
- **Contact Email** – The email address of the business' contact.

Business Entity Identifiers Screen

Figure 46: The “Identify your business” Screen

The “Identify your business” Screen allows you to specify zero or more identifiers by which this business is known and by which this Business Entity can be retrieved from the UDDI registry. (See the ““Identifier” Screens” section for details on navigating this screen.)

Business Entity Categories Screen

Figure 47: The “Categorize your business” Screen

The “Categorize your business” Screen allows you to specify zero or more categories under which this business falls. Once the Business Entity has been categorized, via this screen, UDDI users will be able to retrieve this Business Entity by specifying its category. (See the ““Categorization” Screens” section for details on navigating this screen.)

Once you are finished entering data into this screen, click on “Finish” to save your work to the UDDI registry. If you have been entering data for a new Business Entity, then this will cause that Business Entity to be added to the UDDI registry. If, however, you were using the wizard to edit an existing Business Entity, then all the changes you have made via the wizard will be saved to the UDDI registry.

Creating, Modifying, and Deleting Business Services

How to Create A Business Service

To create a new Business Service from within the HP Registry Composer, select the “Businesses” Tab, and select the parent Business Entity. Once you have done this, you can create the Business Service using the Business Service Wizard. You can launch the wizard in two different ways. First, you can launch the wizard by selecting “Create Business Service...” from the “Actions” menu. Secondly, you can launch the wizard by right-clicking on the parent Business Entity and then selecting “Create Business Service...” from the pop-up menu.

Regardless of the technique you use to launch the Business Service Wizard, once it is displayed, it will lead you through two easy to use screens for creating the Business Service. Once you are finished entering data, simply click on the “Finish” button from the last screen of the wizard to create the new Business Service in the UDDI registry.

How to Modify an Existing Business Service

To edit an existing Business Service from within the HP Registry Composer, select the “Businesses” Tab, and select the Business Service to edit in the tree view. Once you have done this, you can edit the Business Service using the Business Service Wizard. You can launch the wizard in two different ways. First, you can launch the wizard by selecting “Edit Business Service...” from the “Actions” menu. Secondly, you can launch the wizard by right-clicking on the Business Service and then selecting “Edit Business Service...” from the pop-up menu.

Regardless of the technique you use to launch the Business Service Wizard, once it is displayed, it will lead you through two easy-to-use screens for modifying the attributes of the Business Service. Once you are finished entering data, simply click on the “Finish” button from the last screen of the wizard and the edits to your Business Service will be saved to the UDDI registry.

How to Delete a Business Service

In order to delete a Business Service from within the HP Registry Composer, select the “Businesses” Tab, and select the Business Service to delete in the tree view. You can delete the Business Service one of two ways:

- select “Delete Business Service” from the “Actions” menu, or
- right-click on the Business Service and then select “Delete Business Service” from the pop-up menu.

Regardless of the technique you use to delete the Business Service, the HP Registry Composer will display the following dialog prior to actually deleting the Business Service. If you click on the “OK” button of the dialog, the Business Service will be deleted from the UDDI registry.

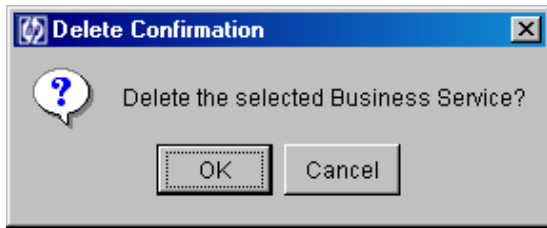


Figure 48: Deleting a Business Service

The “Business Service” Wizard

The screen shot below shows the screens that comprise the Business Service Wizard. Subsequent sections describe each screen in detail.

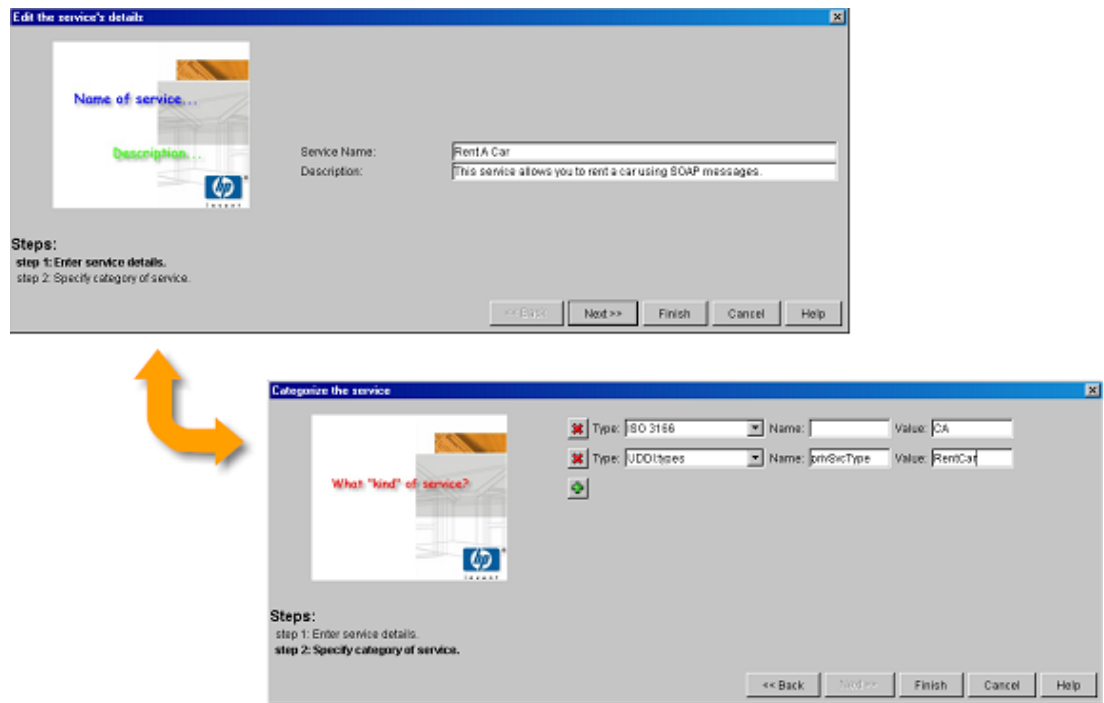


Figure 49: The Business Service Wizard

Business Service Attributes Screen

Figure 50: The “Business Service Attributes” Screen

The “Business Service Attributes” Screen allows you to enter the following text attributes for the Business Service:

Service Name – The name of the service.

Description – A short description of the service.

Business Service Categories Screen

Figure 51: The “Business Service Categories” Screen

The “Business Service Categories” Screen allows you to specify zero or more categories under which this service falls. (See the ““Categorization” Screens” section for details on navigating this screen.)

Once you are finished entering data into this screen, click on “Finish” to save your work to the UDDI registry. If you have been entering data for a new Business Service, then this will cause that Business Service to be added to the UDDI registry. If, however, you were using the wizard to edit an existing Business Service, then all the changes you have made via the wizard will be saved to the UDDI registry.

Creating, Modifying, and Deleting Binding Templates

How to Create a Binding Template

In order to create a new Binding Template from within the HP Registry Composer, you need to select both the “Businesses” Tab and the parent Business Service and then to create the Binding Template using the Binding Template Wizard.

You can launch the wizard in two different ways:

- by selecting “Create Binding Template...” from the “Actions” menu, or
- by right-clicking on the parent Business Service and then selecting “Create Binding Template...” from the pop-up menu.

Regardless of the technique you use to launch the Binding Template Wizard, once it is displayed it will lead you through two easy to use screens for creating the Binding Template. Once you are finished entering data, click on the “Finish” button on the last wizard’s screen to create the new Binding Template in the UDDI registry.

How to Modify an Existing Binding Template

In order to edit an existing Binding Template from within the HP Registry Composer, you need to have the “Businesses” Tab selected, and you need to have selected the Binding Template to edit in the tree view. Once you have done this, you can edit the Binding Template using the Binding Template Wizard.

You can launch the wizard in two different ways:

- by selecting “Edit Binding Template...” from the “Actions” menu, or
- by right-clicking on the Binding Template and then selecting “Edit Binding Template...” from the pop-up menu.

Regardless of the technique you use to launch the Binding Template Wizard, once it is displayed, it will lead you through two easy to use screens for modifying the attributes of the Binding Template. Once you are finished entering data, click on the “Finish” button on the last wizard’s screen and the edits to your Binding Template will be saved to the UDDI registry.

How to Delete a Binding Template

In order to delete a Binding Template from within the HP Registry Composer, you need to have the “Businesses” Tab selected, and you need to have selected the Binding Template to delete in the tree view.

Once you have done this, you can delete the Binding Template one of two ways:

- select “Delete Binding Template” from the “Actions” menu, or
- right-click on the Binding Template and then selecting “Delete Binding Template” from the pop-up menu.

Regardless of the technique you use to delete the Binding Template, the HP Registry Composer will display the following dialog prior to actually deleting the Binding Template. If you click on the “OK” button of the dialog, the Binding Template will be deleted from the UDDI registry.

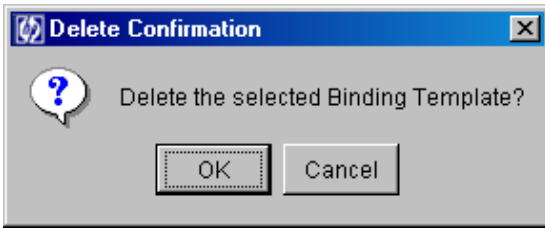


Figure 52: Deleting a Binding Template

The “Binding Template” Wizard

The screen shot below shows the screens that comprise the Binding Template Wizard. Subsequent sections describe each screen in detail.

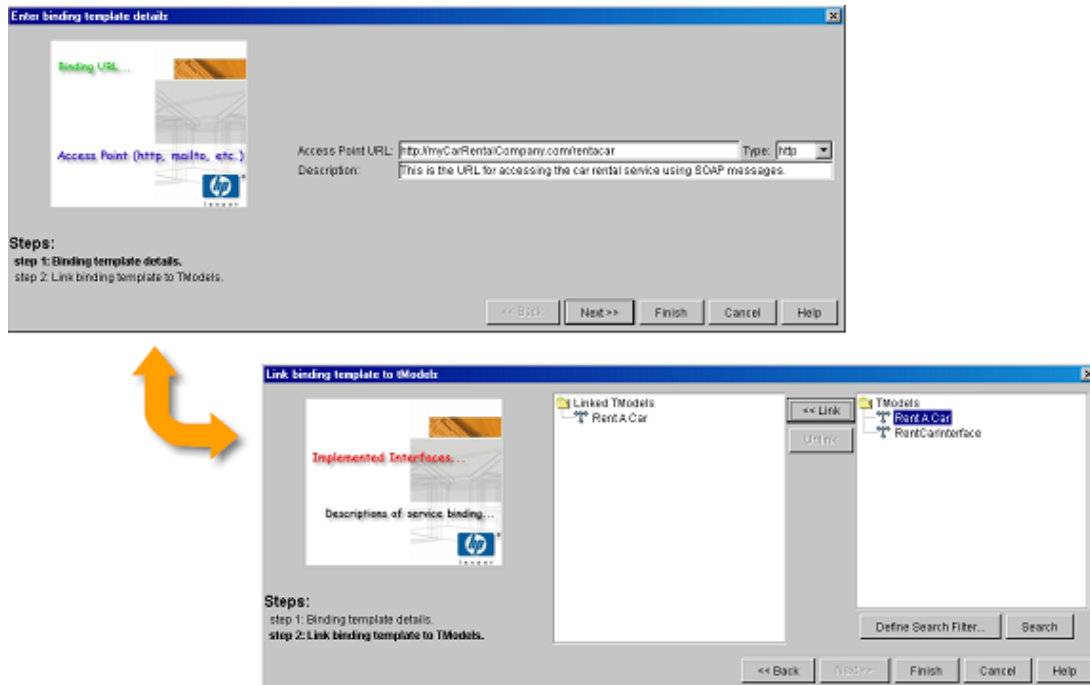


Figure 53: The Binding Template Wizard

Binding Template Attributes Screen

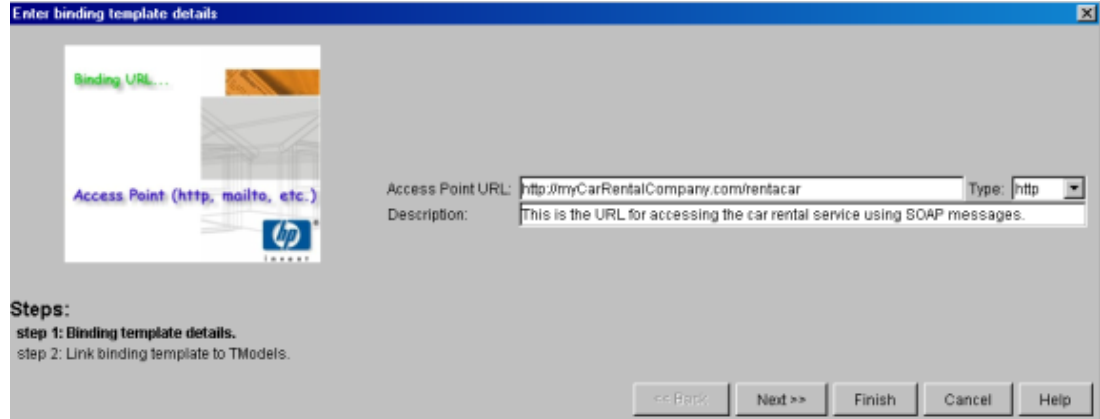


Figure 54: The “Binding Template Attributes” Screen

The “Binding Template Attributes” Screen allows you to enter the following text attributes for the Binding Template:

Access Point URL – The URL for accessing the Business Service.

Access Point URL Type – The type of the URL. Possible values are: http, https, mailto, ftp, fax, phone, other.

Description – A short description of the binding.

“Associate TModels with Binding” Screen

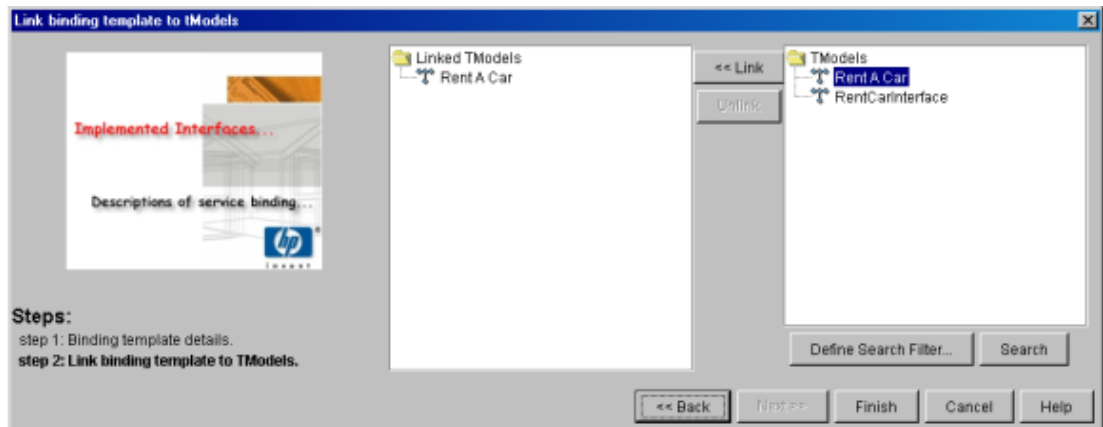


Figure 55: Associate TModels with Binding Screen

This screen allows you to link the Binding Template to zero or more TModels – each of which describes a portion of the Binding Template’s technical signature. For example, if you have a Binding Template which is a URL to a SOAP service, that service may have a TModel which describes its SOAP signature using a WSDL file. And it could have a second TModel which describes the RosettaNet PIP the service at the URL implements.

This screen allows you to search for TModels using the right-hand side's "Define Search Filter" and "Search" buttons and its list. When you click on the "Define Search Filter" button, the "Search For TModels" Wizard is displayed. (This is the same "Search For TModels" wizard that you can use in the "TModels" tab.)

Once you have specified which TModels to search for, you click on the "Search" button – which causes the matching TModels to be retrieved and placed into the list at the right.

The left-hand list is where you specify those TModels that describe the technical interface of the Binding Template's URL. You add a TModel to this list by first clicking on it in the right-hand list and then clicking on the "<<Link" button. You remove a TModel from this list by selecting it in the left-hand list and then clicking on the "Unlink" button.

Once you have added all the TModels you want to have the Binding Template "link" to (aka reference), you click on the "Finish" button. If you are using the Binding Template Wizard to create a new Binding Template, clicking on "Finish" will cause a new Binding Template to be added to the UDDI registry. However, if you were using the wizard to edit an existing Binding Template, then clicking "Finish" will save your edits to the UDDI registry.

Creating, Modifying, and Deleting TModels

How to Create a TModel

In order to create a new TModel from within the HP Registry Composer, you need to have the "TModels" Tab selected. Once you have the "TModels" tab selected, you will be able to create a new TModel using the TModel Wizard. The TModel Wizard can be launched in a number of ways. One way is by selecting "Create New TModel" from the "Actions" menu. Another way to launch the TModel Wizard is from the Pop-up Menu available when you right-click on the root node of the tree view.

Regardless of the technique you use to launch the TModel Wizard, once it is displayed, it will lead you through three easy to use screens for entering the attributes of the new TModel. Once you are finished entering data, simply click on the "Finish" button from the last screen of the wizard and your new TModel will be saved to the UDDI registry.

How to Modify an Existing TModel

In order to edit an existing TModel from within the HP Registry Composer, you need to have the "TModels" Tab selected, and you need to have selected the TModel to edit in the tree view. Once you have done this, you can edit the TModel using the TModel Wizard. You can launch the wizard in two different ways. First, you can launch the wizard by selecting "Edit TModel..." from the "Actions" menu. Secondly, you can launch the wizard by right-clicking on the TModel and then selecting "Edit TModel..." from the pop-up menu.

Regardless of the technique you use to launch the TModel Wizard, once it is displayed, it will lead you through three easy to use screens for modifying the attributes of the TModel. Once you are finished entering data, simply click on the "Finish" button from the last screen of the wizard and the edits to your TModel will be saved to the UDDI registry.

How to Delete a TModel

In order to delete a TModel from within the HP Registry Composer, you need to have the “TModels” Tab selected, and you need to have selected the TModel to delete in the tree view.

Once you have done this, you can delete the TModel one of two ways. First, you can select “Delete TModel” from the “Actions” menu. Secondly, you can right-click on the TModel and then selecting “Delete TModel” from the pop-up menu.

Regardless of the technique you use to delete the TModel, the HP Registry Composer will display the following dialog prior to actually deleting the TModel. If you click on the “OK” button of the dialog, the TModel will be deleted from the UDDI registry. If you click on “Cancel” instead, it will not be deleted.

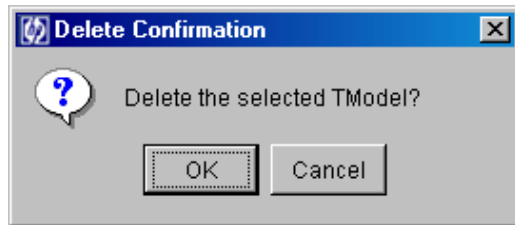


Figure 56: Deleting a TModel

The “TModel” Wizard

The screen shot below shows the screens that comprise the TModel Wizard. Subsequent sections describe each screen in detail.

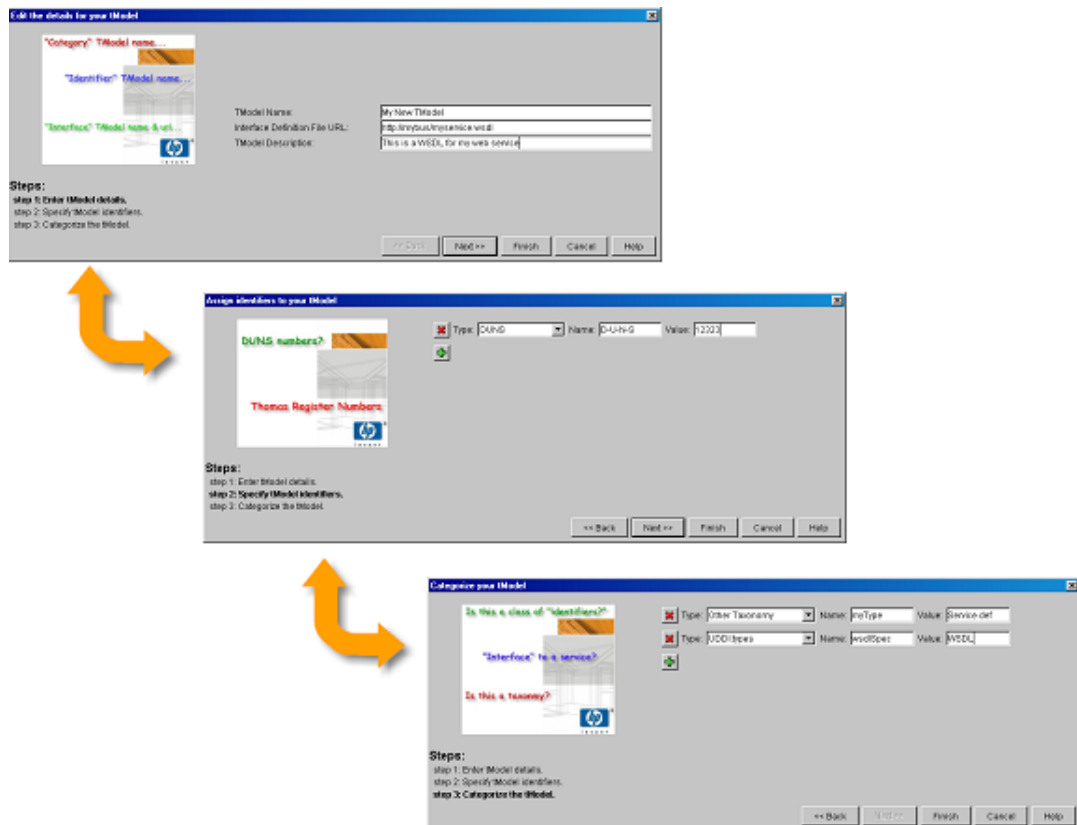


Figure 57: The TModel Wizard

TModel Attributes Screen

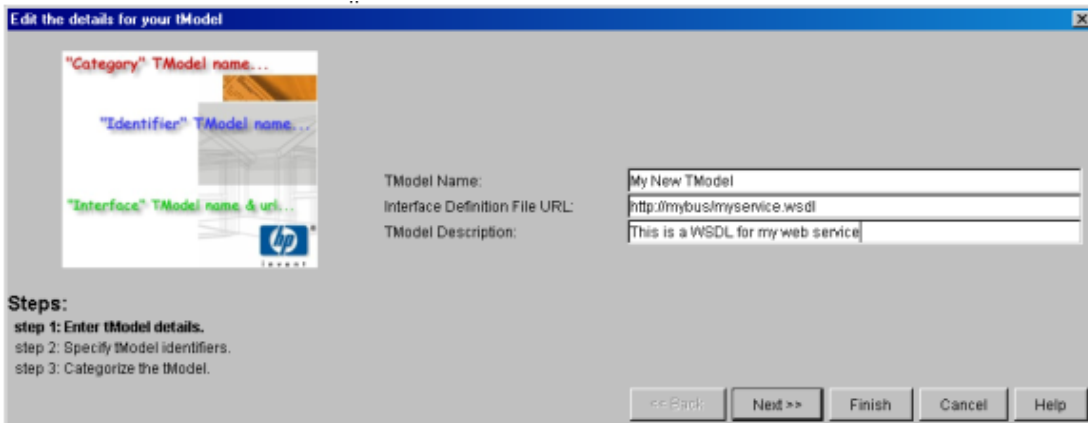


Figure 58: The “TModel Attributes” Screen

The “TModel Attributes” Screen allows you to enter the following text attributes:

TModel Name – The name of the business.

TModel URL – This field is optional. If the TModel represents a technical interface of a Business Service’s Binding Template, then this URL typically points to a WSDL file or a description of a well-known Web Service specification such as a RosettaNet PIP. If, however, the TModel represents a class of business identifiers (such as DUNS numbers) – or a taxonomy used to categorize businesses, services, or TModels – then this URL might point to a web site providing valid values within that set of identifiers or categories.

TModel Description – A short description of the TModel.

TModel Identifiers Screen

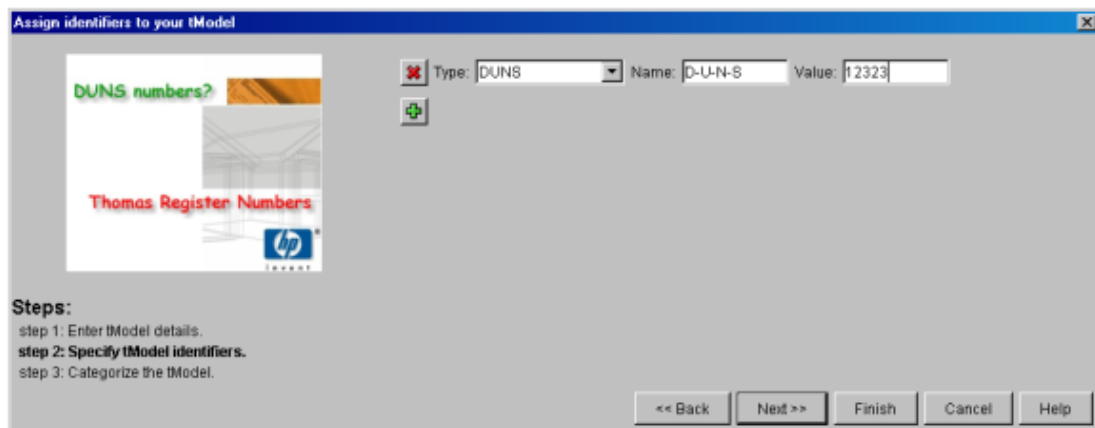


Figure 59: The “TModel Identifiers” Screen

The “TModel Identifiers” Screen allows you to specify zero or more identifiers by which this TModel is known and can be retrieved from the UDDI registry. (*See the “Business Entity Identifiers Screen” section for details.*)

TModel Categories Screen

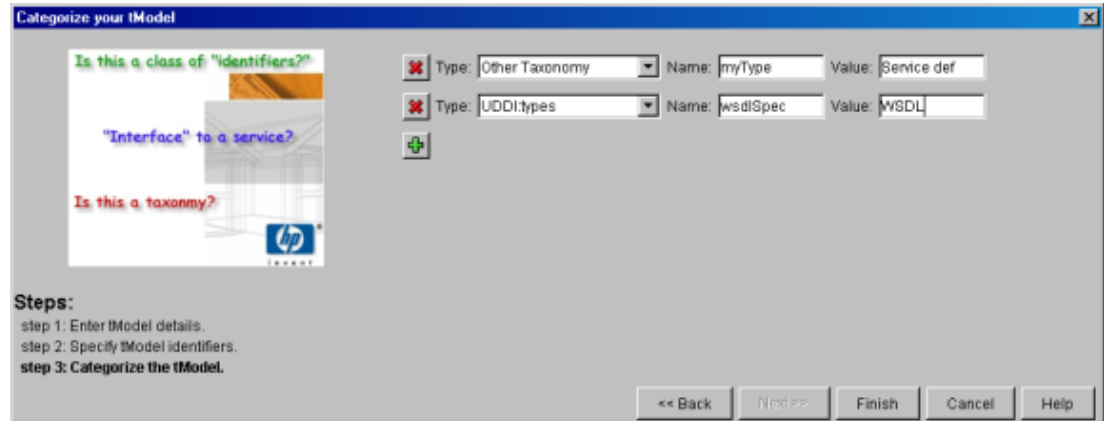


Figure 60: The “TModel Categories” Screen

The “TModel Categories” Screen allows you to specify zero or more categories under which this TModel falls. Once the TModel has been categorized via this screen, UDDI users will be able to retrieve this TModel by specifying its category. (See the “*Business Entity Categories Screen*” for details.)

Once you are finished entering data into this screen, click on “Finish” to save your work to the UDDI registry. If you have been entering data for a new TModel, the TModel will be added to the UDDI registry. If, however, you were using the wizard to edit an existing TModel, then all the changes you have made via the wizard will be saved to the UDDI registry.

Generating a Client-Side Java “Proxy” for Accessing a Service

Generate a Proxy From the “Businesses” Tab

Step 1: Select a TModel & Click on “Generate Client-Side Proxy”

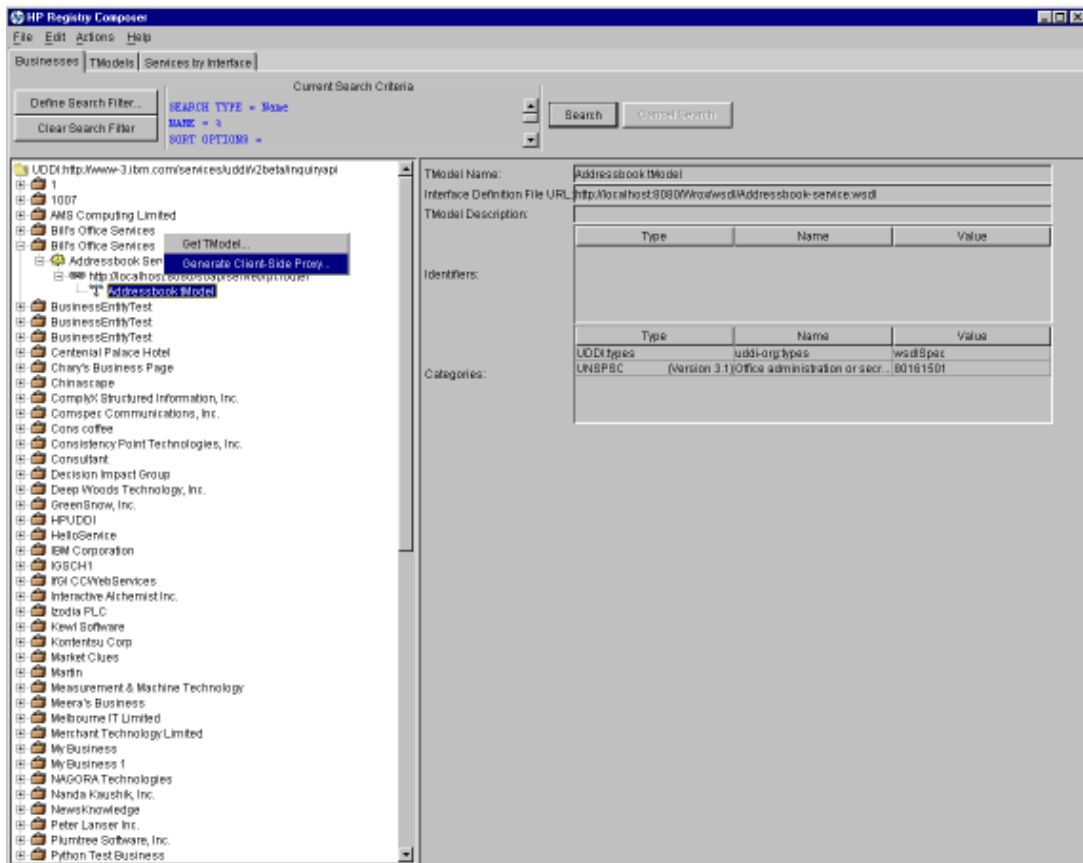


Figure 61: Generate a Client Side Java Proxy, Step 1

You can create a client-side Java proxy for accessing a Web Service. To do so, however, you need to have access to a WSDL file. In UDDI, TModels can contain URL's that point to WSDL files. Therefore, the HP Registry Composer allows you to select those TModels that represent WSDL files (ie, they contain URLs that point to WSDL files) and then use the referenced WSDL file to generate the client-side Java proxy.

To generate a client-side Java proxy, you must first select a TModel. Then either select “Generate Client-Side Proxy” from the “Actions” menu or right-click on the TModel and select “Generate Client-Side Proxy” from the Pop-Up menu.

Step 2: Select the Destination Directory

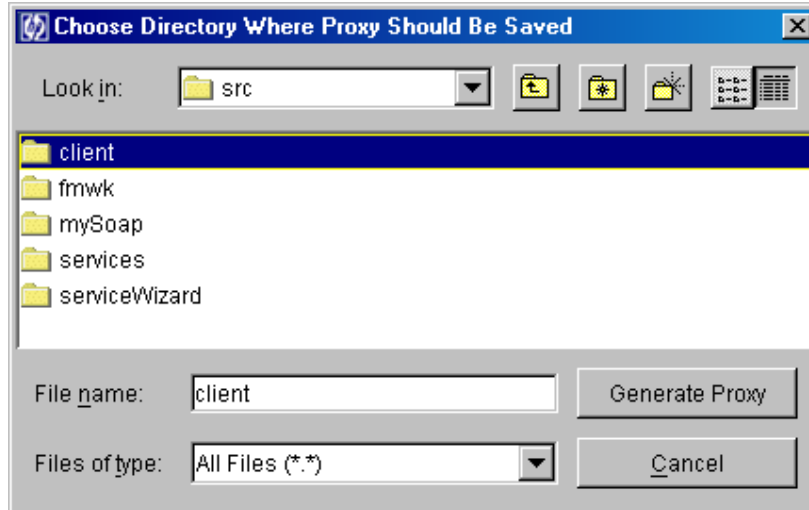


Figure 62: Generate a Client Side Java Proxy, Step 2

Clicking on “Generate Client-Side Proxy” will launch a dialog allowing you to choose a destination directory into which the client-side Java proxy will be generated. Once you have selected the desired destination directory, click on the “Generate Proxy” button to generate the client-side Java proxy.

Step 3: “Client Proxy Created!” Message Box

Once the client-side Java proxy has been successfully created, you will see the following message box displayed.

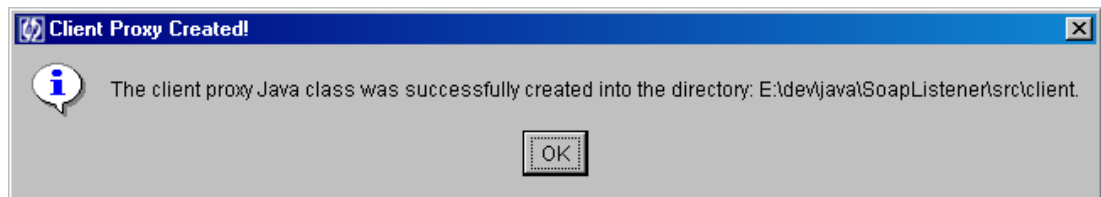


Figure 63: Generate a Client Side Java Proxy, Step 3

Generate a Proxy From the “TModels” Tab

Step 1: Select a TModel & Click on “Generate Client-Side Proxy”

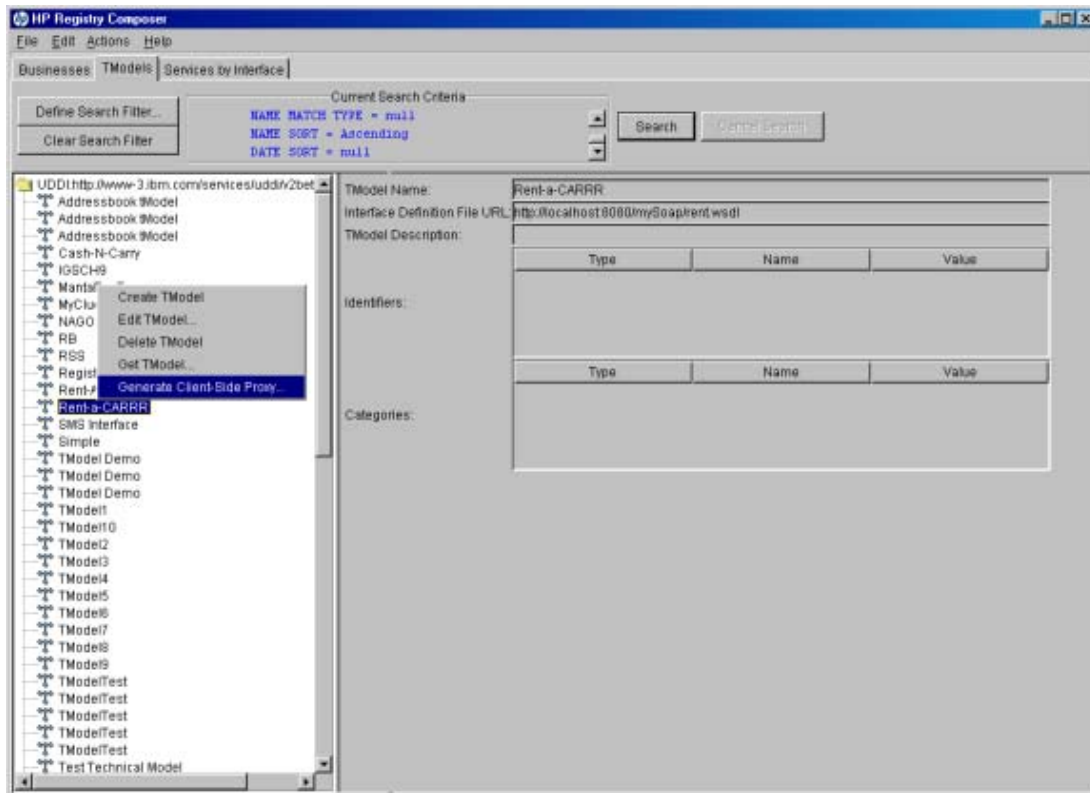


Figure 64: Generate a Proxy from the TModel Tab, Step 1

You can create a client-side Java proxy for accessing a Web Service. To do so, however, you need to have access to a WSDL file. In UDDI, TModels can contain URL's that point to WSDL files. Therefore, the HP Registry Composer allows you to select those TModels that represent WSDL files (ie, they contain URLs that point to WSDL files) and then use the referenced WSDL file to generate the client-side Java proxy.

To generate a client-side Java proxy, you must first select a TModel. Then either select “Generate Client-Side Proxy” from the “Actions” menu or right-click on the TModel and select “Generate Client-Side Proxy” from the Pop-Up menu.

Step 2: Select the Destination Directory

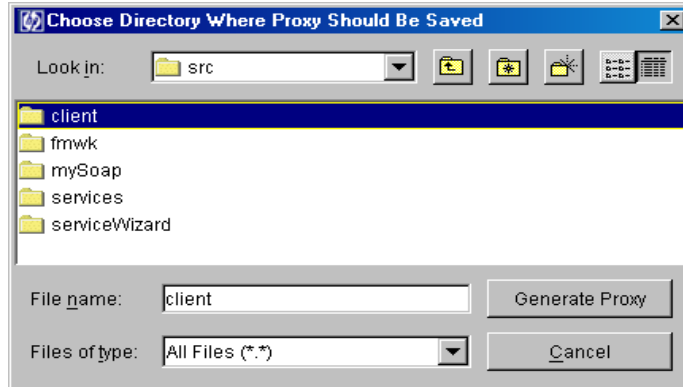


Figure 65: Generate a Proxy from the TModel Tab, Step 2

Clicking on “Generate Client-Side Proxy” will launch a dialog allowing you to choose a destination directory into which the client-side Java proxy will be generated. Once you have selected the desired destination directory, click on the “Generate Proxy” button to generate the client-side Java proxy.

Step 3: “Client Proxy Created!” Message Box

Once the client-side Java proxy has been successfully created, you will see the following message box displayed.

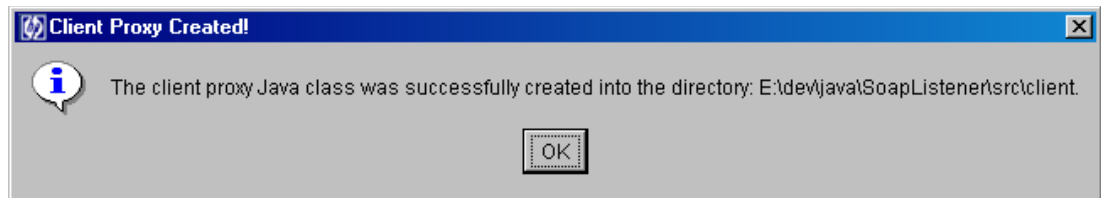


Figure 66: Generate a Proxy from the TModel Tab, Step 3

Generate a Proxy from the “Services by Interface” Tab

Step 1: Select a TModel & Click on “Generate Client-Side Proxy”

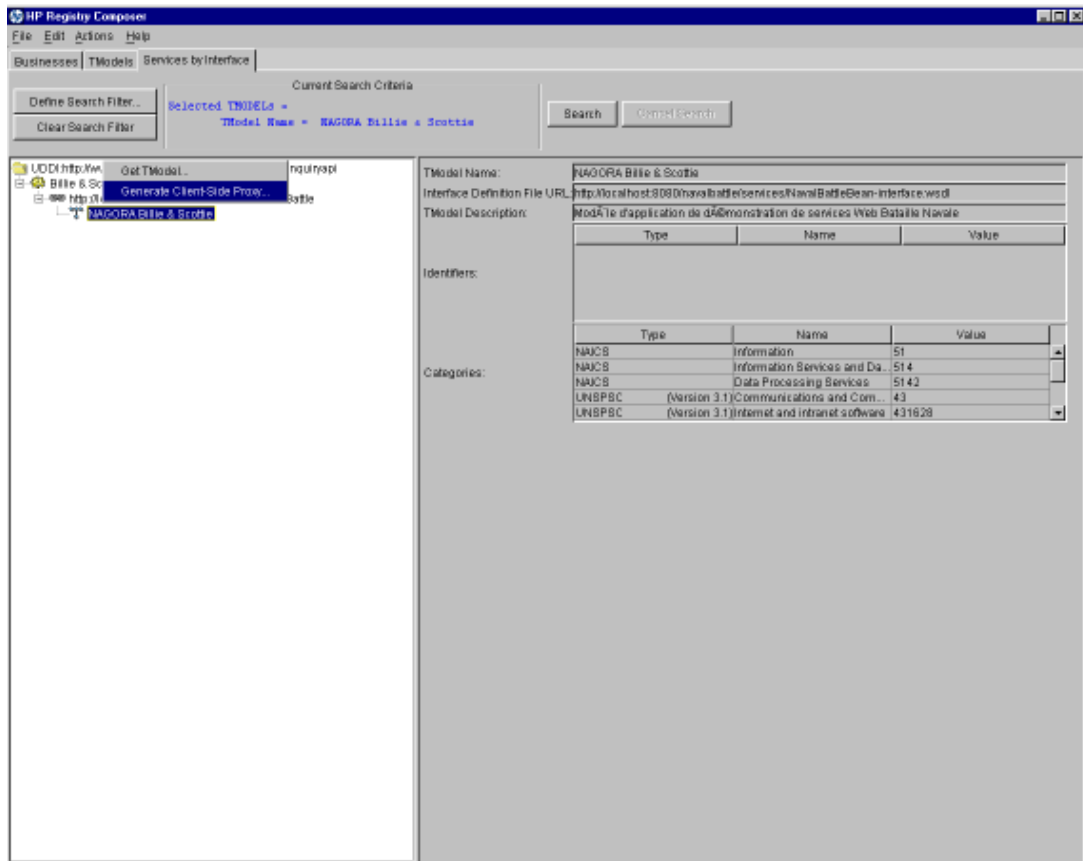


Figure 67: Generate a Proxy from the “Service by Interface” Tab, Step 1

You can create a client-side Java proxy for accessing a Web Service. To do so, however, you need to have access to a WSDL file. In UDDI, TModels can contain URL’s that point to WSDL files. Therefore, the HP Registry Composer allows you to select those TModels that represent WSDL files (ie, they contain URLs that point to WSDL files) and then use the referenced WSDL file to generate the client-side Java proxy.

To generate a client-side Java proxy, you must first select a TModel. Then either select “Generate Client-Side Proxy” from the “Actions” menu or right-click on the TModel and select “Generate Client-Side Proxy” from the Pop-Up menu.

Step 2: Select the Destination Directory

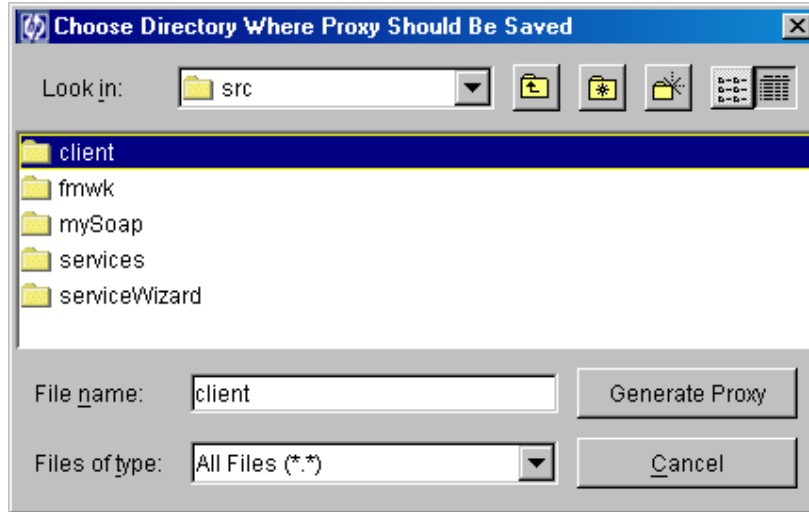


Figure 68: Generate a Proxy from the “Service by Interface” Tab, Step 2

Clicking on “Generate Client-Side Proxy” will launch a dialog allowing you to choose a destination directory into which the client-side Java proxy will be generated. Once you have selected the desired destination directory, click on the “Generate Proxy” button to generate the client-side Java proxy.

Step 3: “Client Proxy Created!” Message Box

Once the client-side Java proxy has been successfully created, you will see the following message box displayed.

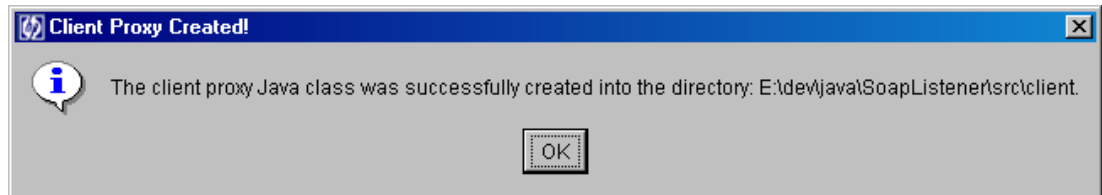


Figure 69: Generate a Proxy from the “Service by Interface” Tab, Step 3

