



CI/SfB

(52.5) lh2

July 2004



Rainline

Roof drainage system

- quality and performance



www.lindab.com

Environmentally friendly solutions for the **Built Environment**

Lindab Building Products develops, manufactures and supplies lightweight, high strength steel profile products for the built environment.

We offer a comprehensive range of construction components for both residential and commercial properties. At the heart of our business is a complete range of drainage solutions which is the market leading brand throughout Scandinavia. Also available is a wide range of profile sheet metal wall and roof cladding products along with our high strength external wall stud system with patented cold bridging design.

Lindab has operations in 26 countries across the world and employs over 3,000 people. Our Head Office is in the beautiful Bjare Peninsula in South Western Sweden.



CONTENTS

Product Overview	3
Design & Style	4
Quality & performance	5
Why Steel?	6
Colours and Finishes	7
Accessories	8-11
Advice and Assistance	12

The right
product at the
right place at
the right time





Lindab has operations in 26 countries across the world and employs over 3,000 people. Our Head Office is in the beautiful Bjäre Peninsula in South Western Sweden.



The very best **Rainwater System**

Lindab Rainline is the most comprehensive and thoroughly tested rainwater system on the market. It is manufactured in Sweden to international ISO 9001 and 9002 quality standards and ISO 14001 environmental management standards.

A policy of continuous development, led in many instances by feedback from existing customers, has ensured that the Lindab Rainline system reflects the needs of the specifier, installer and end user in the UK marketplace. As a result, the system now on offer combines superior performance with fast and easy assembly, bringing the cost of

installation lower than that of leading plastic systems; a major benefit to a product designed to last far longer than typical rainwater systems.

Originally developed to withstand the high snow loads and extreme temperature fluctuations of the Scandinavian climate, Lindab Rainline has performed perfectly for over 40 years and now accounts for the majority of above ground drainage systems throughout Scandinavia. Wherever it has been installed in the UK it has significantly outperformed alternative systems.



In all the shapes and sizes you need plus **stylish design**

Lindab Rainline is more durable than plastic, lighter and less expensive than cast iron / aluminium and much easier to install.

Thanks to the unique design, outlets can be placed anywhere along the length of the gutter without the need to break the running length to accommodate the downpipe. The design of the outlet is such that it will

allow unrestricted flow to the downpipe and is simply snapped into place.

A comprehensive range of guttering and accessories is available to suit every application. All components are manufactured to the same high standards.



Lindab Rainline adds aesthetics to a very practical system. Any type of building can benefit from the stylish design



Quality and performance that will be
music to your ears



The standard 125mm deep flowing gutter has greater capacity than most other comparable systems. The unique rolled front edge gives greater strength and rigidity and will withstand shock loads from ladders etc.

Gutter joint connectors are easily and quickly fitted using Lindab's unique press on clip. No fixings, sealants or tools required. The neoprene seal enclosed in the joint is all that is required!

The stopend is compact and self locking. They are simply pushed into place with the palm of your hand.

Downpipes fit flush with each other to provide uninterrupted flow into the drain and are held in place by snap-lock holders mounted on the wall. Should the occasion demand they can be released without having to pull down the whole system.

Gutter brackets are the most substantial available. Able to withstand significant loadings.

A comprehensive range of inner / outer angles, shoes, branches, leaf traps, valley gutters, flashing and trims are also available in the same high strength material.

Why customers around the world are **Turning to Steel**



Across Scandinavia, no-one would even consider fighting a battle with the elements with the brittle materials commonplace in the UK. They use steel.

Galvanised steel is far more durable than plastic. It expands far less so you do not have to allow for expansion joints and the typical "popping out" of joints and bends. Steel won't crack in cold conditions or when your window cleaner puts his ladders up against it. Steel doesn't need any sealants because of low expansion.

If maintenance is your concern Lindab Rainline is a virtually

maintenance free system. It's very light weight too.

Don't worry about having to paint Lindab Rainline. The choice of colours come with a 15year guarantee so no need to schedule in those regular touch up sessions. The guarantee covers the whole system including the integrity of the steel itself!

Don't fight a battle with the elements with a material you can't rely on! Lindab Rainline galvanised steel system is a stylish, cost effective, highly durable alternative that is taking over the UK market!



Liked by
builders,
appreciated
by planners
and loved
by clients

Local authorities across the UK have turned to Lindab for their rainwater requirements.





Available in both classic and contemporary colours

Finishing touches

The choice is yours

Lindab Rainline is available in plain galvanised or an extensive range of plastisol or high build polyester coatings to suit your requirements.

We can also provide the system in any colour or shade you may want if you are looking for a slightly different look.

All Lindab coatings and colours are covered in your 15 year guarantee. Touch-up paint is available should you accidentally damage the coating during installation.

The only maintenance needed is an occasional wipe or washdown if required. Another benefit of the plastisol coating is its colour stability, unlike plastic systems it will not fade or become brittle when expose to natural levels of sunlight.



Specific colours can be matched to suit the style and finish of any building.

Colour Palette for Lindab Rainline

Plastisol Coatings



Polyester Coatings



Metal Finishes



The entire Rainline range of products is available in any specific colour you have in mind in addition to our standard palette. Prices on request.



The complete roof drainage system

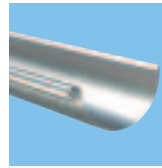
Lindab Rainline is a complete, flexible and easily installed system that has been developed by professionals for professionals. Galvanized steel sheeting with a double layer of plastisol or high build polyester provides good weather resistance, very good rust protection and of course and attractive and elegant finish. If you need a product that is flexible and has a wide range of components, Lindab Rainline is your solution.



Lindab Rainline provides a stylish and robust solution.



Half Round Gutter & Accessories



R Half Round Gutter. Standard Length 4m

Dim	Dmm	dmm	Area* mm ²	Area** mm ²	PI	Cu
100	107	17	4500	4100	•	•
125	123	17	5900	5500	•	•
150	155	17	9400	8900	•	•
190	192	22	17300	16200	•	•

* Sectional area

** Water carrying area (6mm lower front edge, 190 11mm)
Lengths as in current price list



RSK Gutter Joint with Rubber Seal

Dim	PI
100	•
125	•
150	•



KFK Fascia Bracket

Dim	L mm	PI
	KFK	bxt 25 x 5
100	146	•
125	146	•
150	146	•



SSK Adjustable Snap-On Bracket

Dim	PI
100	•
125	•
150	•



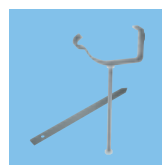
K24 Fascia Bracket L=240mm

Size mm	L mm	PI bxt	PI bxt	Cu bxt
	K24	25x5	30x5	30x6
190	247		•	



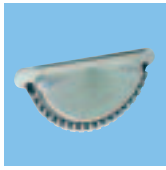
KFL Rafter Bracket* L=196mm

Size mm	L mm	PI bxt
	KFL	25x5
100	196	•
125	196	•
150	196	•



RFKF Rise and Fall Bracket

Size mm	All Thread mm	Spike mm	pl
100	250	300	•
125	250	300	•
150	250	300	•



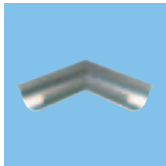
RGT Stop End, Self-Locking

Dim	PI
100	•
125	•
150	•



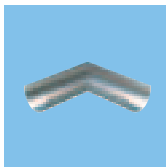
RGV/RGH Stop End, Left-Right

Dim	PI	cu
100	•	•
125	•	•
150	•	•
190	•	•



RVY Gutter Angle, Outer

D nom	Lmm	PI	Cu
	RVY		
100	295	•	•
125	275	•	•
150	245	•	•
190		•	



RVI Gutter Angle, Inner

D nom	Lmm	PI	Cu
	RVY		
100	400	•	•
125	400	•	•
150	400	•	•
190		•	



SOK Gutter Outlet

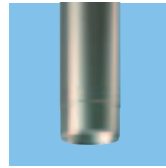
Dim	D/d	A mm	H mm	PI	Cu
100/75		151	56	•	•
100/87		151	48	•	•
125/75		174	67	•	•
125/87		174	59	•	•
125/100		174	50	•	•
150/87		207	82	•	•
150/100		207	73	•	•
150/111		207	66	•	•
150/120		207	60	•	•
190/100		180	62	•	•
190/120		206	62	•	•



The galvanised finish product suits timber frames and cladding perfectly.



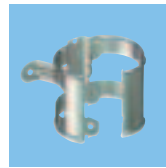
Down Pipe & Accessories



SROR Down Pipe: Standard Length 3m

Dim Di/d	Area* mm ²	PI	Cu
75	4400	•	•
87	5900	•	•
100	7800	•	•
111	9700	•	•
120	11300	•	•

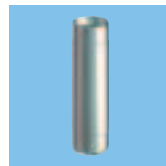
Length as in current price list.



SSVH Down Pipe Bracket

Dim D	PI	Cu*
75	•	•
87	•	•
100	•	•
111	•	•
120	•	•

* Similar design to SVHA with wedge locking.



MST Intermediate Pipe

Dim Di/d	PI
75	•
87	•
100	•
111	•
120	•

With spigot both ends.



BM 70° Pipe Bend (2 bends per offset required)

Dim Di/d	R mm	PI	Cu*
75	90	•	•
87	100	•	•
100	125	•	•
111	115	•	•
120	125	•	•

* Not BM



BM 90° Pipe Bend (2 bends per offset required)

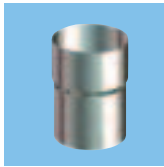
Dim Di/d	R mm	PI	Cu*
75	90	•	•

* Not BM



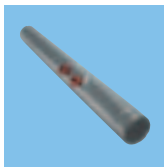
UTK Shoe

Dim Di/d	R mm	L mm	PI	Cu
75	90	165	•	•
87	100	170	•	•
100	125	175	•	•
111	115	190	•	•
120	125	205	•	•



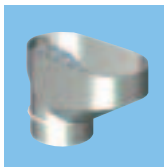
SRORM Pipe Connector

Dim	PI
75	•
87	•
100	•



MSTRA Rod Access Pipe

Dim	PI
75	•
87	•
100	•
111	•
120	•



RT Drain Tap for Down Pipes (HD polythene)

Leaf strainer for HD polythene down pipes. The lower section fits standard ground pipes/junction pipes.



SLS Self Cleaning Leaf Trap (HD polythene)

Self cleaning leaf strainer for HD polythene down pipes. The lower section fits standard ground pipes/junction pipes.



GROR Adjustable Branch

Dim	PI
Di/d	
75	•
87	•
100	•



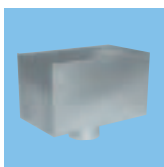
FUTK Adjustable Shoe

Dim	PI
D	
75	•
87	•
100	•



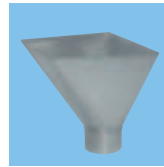
SOKN One Piece Bend

Dim	PI
75	•
87	•
100	•



VATK Small Rectangular Water Hopper

Dim	PI
D/d	
75	•
87	•
100	•
111	•
120	•



VATK Large Square Water Hopper

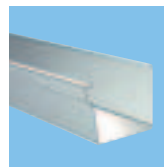
Dim	PI
D/d	
75	•
87	•
100	•
111	•
120	•



MRT Drainage Connector (HD polythene)

Drainage adapter for HD polythene strainers. For connection to ground pipes with other dimensions than standard.

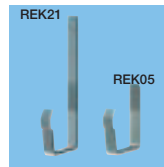
Rectangular Gutter & Accessories



RER Gutter: Standard Length 4m

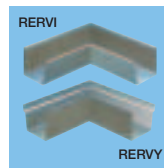
Dim	Area*	PI	Cu
Di/d	mm ²		
136	11000	•	•

* Water carrying area.
Length as in current price list.



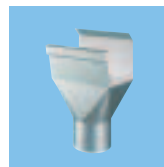
REK21/REK05 Gutter Bracket

Dim	L mm		PI	Cu
	REK21	REK05	bxt 25 x 5	bxt 25 x 6
136	210	50	•	•



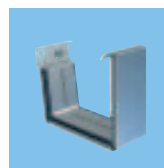
RERVI/RERVY Internal/External Gutter Angle

Dim	L mm		PI	Cu
	REVI	REVVY		
136			•	•



REOK Gutter Outlet

Dim	PI
75	•
87	•
100	•



RERSK Gutter Joint with Rubber Seal

Dim	PI
136	•



RERGV/RERGH Left/Right Stop End

Dim	PI	Cu
136	•	•

We are always close at hand to give you **Advice and assistance**

At Lindab Building Products, our aim is to match the reliability of our products with that of our service. Customer support is a core part of our business philosophy.

We are proud of the relationships we have developed with local authorities, Housing Associations, exclusive developers, Contractors and end users across the UK. We have only done this by adopting the right approach to both customers and end users.

Office support

We have dedicated customer support at our UK Head Office in the Midlands. We can provide you with technical assistance, quotes, order entry and problem solving solutions just by picking up the phone.

Send us your building drawings and we will even do a "product take-off" for you free of charge



Field Support

We have a dedicated team of Area Managers who have been trained to the highest degree on our Rainwater System.

Our team are available to visit you either on site or in your office / premises. We will give you full technical support on site and work closely with your designated contractor or we can even recommend one of our regional approved contractors.

Our team can offer product demonstrations / seminars / CPD's to your place of work to enable you to make the right choice.

Distribution

We can normally deliver standard items to you within just 3 working days (next day is frequently available). Deliveries are made directly from our distribution centre in the Midlands

We also have database of approved distributors across the UK which can help you with orders, quotes and arranging visits from our Area Managers.



Lindab Building Products Division

Unit 7, Block 2
Shenstone Trading Estate
Bromsgrove Road
Halesowen
West Midlands
B63 3XB

Tel: (0121) 585 2780

Fax: (0121) 585 2782

Email: building.products@lindab.co.uk

Web: www.lindab.com