



Version 1.1

This is the main documentation file for Super Clock. I think Super Clock is easy to use and figure out, but if you have any questions about a feature or something that won't work, please refer to this file before trying to contact me. The alarm settings and some of the places you can click on might not be that clear at first glance, but that's what this file is for!

**New to version 1.1:** Super Clock 1.1 now has much-improved graphics, the ability to set the system clock, and a "stay-on-top" feature.

**The Shareware concept:**

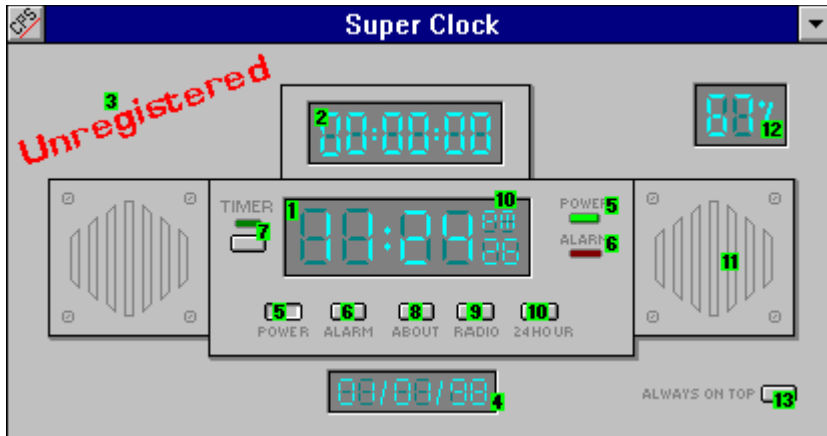
Super Clock is shareware. This means you are free to try out this program for a period of 30 days. After 30 days, you must either register this program, or delete it from your hard disk and stop using it. Think of it as "try before you buy" software. If you want to continue using it after 30 days, you must register. To register, send \$10 to: Charlie Grasmick

1121 Knight St.  
Helena, MT 59601

After I have received the registration money, I will send you your registration number and instructions. After you enter this number, you will be a registered user. And, both the opening screen telling you to register and the word "Unregistered" that show up on the clock will disappear. If you wish to receive your registration number by "snail mail" (normal U.S. Post Office mail), include your address when you send me the registration money. If you wish to receive your registration number by electronic mail, send me your internet e-mail address along with the money. Remember, please support both the authors of shareware and the concept itself, please register! (It's only 10 bucks, after all. That's less than what it would cost for a pizza dinner)

### Using the program:

Ok, by now you should have installed the Super Clock files in the correct directories (see INSTALL.TXT if you haven't yet for instructions on how to install). To run, just run the SUPRCLCK.EXE program through "Run...", File Manager, or an icon. After it loads and you get the registration reminder, you should see a screen that looks like the one below:



Now, obviously the little green numbers aren't going to be on the program screen. They are just here to make it easier for me to explain all of its features. (Many, many features...)

1. This is the main time display, which displays the current time in hh:mm:ss form, and in either a 12-hour or a 24-hour format. You can also click on this part to set your system clock.
2. This is the timer display, which has two modes, countdown and countup. In countdown mode, you start the timer and it counts down from a specified time. In countup, it starts at 0 and just counts up until you tell it to stop. You can click on the display to select either countdown or countup, and set the amount of time for countdown. Please realize if you set it for countdown by clicking on the display (2), when it is done no alarm will go off. If you want an alarm to go off, please see the section under number 6 for information on setting alarms.
3. This reminds you it is an unregistered copy. Please see the beginning of this document for information of shareware and registering. When you register, this will disappear.
4. The date display: This displays the current date in MM/DD/YY format. If you click on this display (4), you can change the system date.
5. Power button: This controls the "power" to the clock and timer system. If it is off, no time, timer, or alarm functions will be active. The resource monitor and date remain displayed. Click to turn off, click again to turn back on. The green light on the right upper part also has a 5 by it. This light lights up green if the power is on, and goes out when the power is off.
6. I put 6 at the end because it is a big one and includes other graphics for help. It is directly after number 12.
7. The timer button: After you click on the timer display (2) to select either countup or countdown, click on this button to activate the timer. The green light just above the button will light up when the timer is active. Click on this button again to turn the timer off.

**8. About button:** When you click on this, it will bring up an "about box" telling you about Super Clock. Try it!

**9. Radio button:** If this button is out, click on it to load a WAV file to play. After you select a file, this button will stay pushed in to indicate you have a WAV file loaded. If the button is pushed in when you click on it, it will pop out and unload the WAV file that was loaded. To play, click the mouse on the right-side speaker, which is number 11. WAV files will of course play if you have a soundcard and the proper drivers installed in windows. They will also play if you have the Microsoft (R) speaker driver, which allows WAV files to be played if you don't have a soundcard. If you don't have a soundcard and don't have the speaker driver, I highly recommend downloading the speaker driver from somewhere. The WAV files sound pretty good on a 486 considering the PC speaker is small and low-quality. Super Clock has been tested on both a system with a soundcard (a Pro AudioSpectrum 16), and on a system with the speaker driver installed, and played WAVs on both.

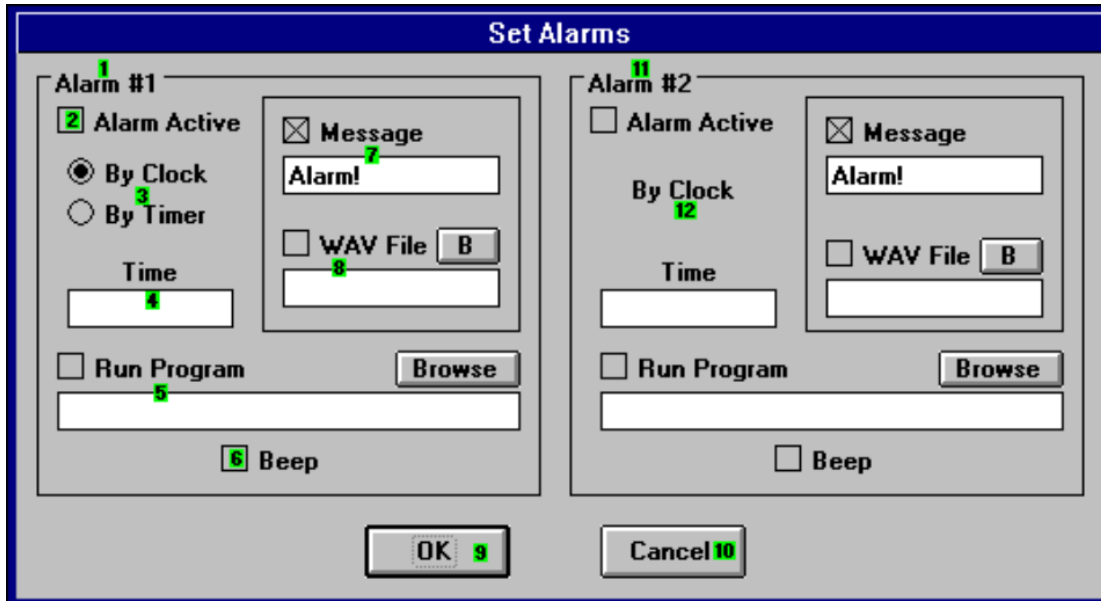
**10. 24 hour button:** When popped out, the clock will display the time in 12-hour mode, and the 12/24 indicator (number 10) will display either "AM" or "PM", depending on what time of day it is. When this button is pushed in, the clock will display the time in 24-hour mode, and the 12/24 indicator (number 10) will display "24".

**11. Right side speaker:** click on this to play a WAV file you have loaded using the radio button (number 9). See 9 for more information.

**12. Resource display:** This display tells you how much free system resources you have, in percent. Obviously, you could never have 100% free resources, so it doesn't need to be more than a 2-digit display. But, this resource display has another very useful feature. When you click on the display, a dialog box comes up that allows you to set a low-resource alarm, or disable it. When you set it for around 30%, and the alarm goes off, you know it's time to restart windows to gain some resources back. In fact, when the alarm goes off, it will even ask you if you want to restart windows.

**13. Stay On Top button:** When this button is pushed in (stay on top enabled), the Super Clock window will stay on top of all other windows. If Super Clock is minimized, the icon will stay on top. Try it!

6. Now, the big one. Alarm settings and functions: When you click on the alarm button (6), a dialog box will come up allowing you to set the many options of the alarms. This dialog box is shown below:



Now I get to explain all of the alarm settings:

(I'll call the numbers 1a and 2a... so you don't get them confused with the main numbers, but above on the dialog box they are labeled 1,2,... They're the same numbers.)

**1a.** Alarm #1: This is the primary alarm. It is different from alarm #2 because you can set #1 for either the clock or the timer. (See 3a). Also, see 11a for more information on Alarm #2.

**2a.** Alarm Active checkbox: When this checkbox is checked, the alarm is active. This box **MUST** be checked for the alarms to work. Obviously, the checkbox under Alarm 1 is for activating #1, and the checkbox under Alarm 2 is for #2.

**3a.** By Clock or By Timer: These options set the main alarm mode. If "By Clock" is selected, the alarm will go off when the current time is the same as the time value entered in the time box (4a). If "By Timer" is selected, the alarm will go off after a time specified in the time box (4a). Please note that Alarm 2 does not have this option, and is always set for "By Clock".

**4a.** The Time box: This is where you specify the time for the alarm to go off at. If "By Clock" is selected, it is a time of day like "9:00:00" for 9AM. If you have 12 hour mode selected, this alarm would also go off at 9PM. If you have 24 hour mode selected, the alarm wouldn't go off at night because 9PM would really be "21:00:00". If "By Timer" is selected, the value you enter is the amount of time to count down from before the timer goes off, like "00:00:05" for a 5 second countdown or something like "00:15:00" for a 15 minute countdown. The same goes for Alarm 2.

**5a.** Run Program: If this checkbox is selected, a program will be run when the alarm goes off. The name of the program you want to run goes in the text box right below the checkbox. Also, you can select the "Browse" button to search for the name of the program you want to run. The same goes for Alarm 2.

**6a.** Beep checkbox: If this checkbox is selected, the computer will make one beep when the alarm goes off. The same goes for Alarm 2.

**7a. Message:** If this checkbox is selected, a message will be displayed when the alarm goes off. The text that you want to display in the message goes in the text box that is right under the checkbox. The same goes for Alarm 2.

**8a. WAV File:** If this checkbox is selected, a WAV file will be played when the alarm goes off. The name of the WAV file (including path) goes in the text box right under the checkbox. You can also click on the "B" button to browse for the name of a WAV file to play. The same goes for Alarm 2.

**9a. OK button:** Select this button to ok the changes you made to the alarm settings.

**10a. Cancel button:** Select this button to cancel all changes you made to the alarm settings.

**11a. Alarm #2:** This is a second alarm, which can be set and used just like alarm 1, except for the thing mentioned below in 12a. The ability to set two separate alarms is only available in the registered version, and will be automatically enabled when you register.

**12a. By Clock:** Alarm 2 can only be set to go off at a certain time, use Alarm 1 if you want to set the alarm by the timer.

### **Wrap-up:**

Well, that pretty much sums up all of the impressive features of Super Clock. Remember, Super Clock is shareware. Please read the section about this at the beginning of this document. If you want to reach me for comments, suggestions, problems, or complaints, you can send me e-mail. My internet address is: [sftk@MT.net](mailto:sftk@MT.net)

### **About this program:**

Super Clock was written mainly in Visual Basic 3.0, with some of the programming done in Visual C++ 1.0. It took me a long time to write this program and create/integrate all of the graphics, so I hope you like it!

Well, thanks for taking the time to read this document. I hope you enjoy Super Clock!

Charlie Grasmick  
Author, Super Clock  
Copyright 1994 Softekk Software

-eof-