

Using GPS

The TripMaker Deluxe GPS technology allows you to combine TripMaker with a GPS receiver and portable computer to track your location on the TripMaker map. This provides a very accurate picture of your current position as you drive. You can also tell TripMaker to leave a "bread crumb" trail of the route you have taken, and you can save the trail and replay your route later.

You can access the GPS functions from the GPS menu.

Click on a topic below to learn more about using GPS:

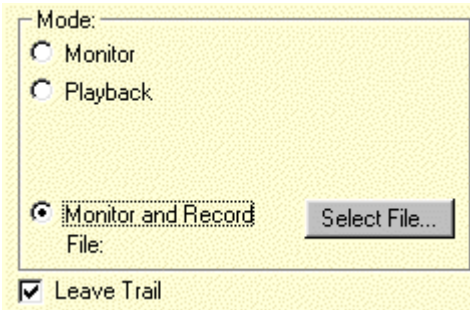
[{button ,JI\(`GPSTUTOR.HLP>gps',`selecting_the_tracking_mode'\)}} Selecting the tracking mode](#)

[{button ,JI\(`GPSTUTOR.HLP>gps',`starting_and_stopping'\)}} Starting and stopping the GPS receiver](#)

[{button ,JI\(`GPSTUTOR.HLP>gps',`using_the_map_view'\)}} Using the Navigator View, EZ View, and Map View](#)

Selecting the tracking mode

```
{button{button Next  
Close,CW("GPS")}>>,Next()}}
```



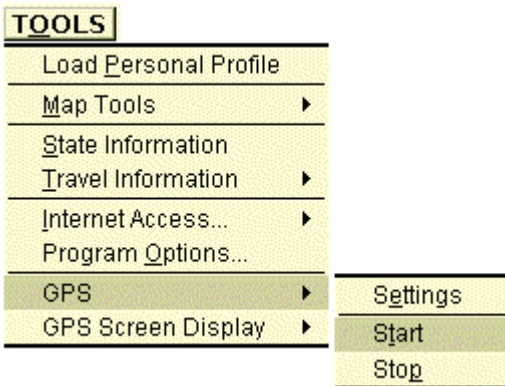
The TripMaker Deluxe GPS feature lets you choose from two tracking modes: Monitor and Monitor and Record.

The Monitor mode provides a continually updated picture of your current position on the map by marking your position with a compass icon. If the Leave Trail option is selected, then you will see a trail of compasses showing you where you have been.

Monitor and Record works the same way as Monitor mode, but in addition, it records the placement of the compass icons on the map so you can play back the route later.

Starting and stopping the GPS receiver

```
{button << Prev,Prev()}{button Next  
>>,Next()}}
```



To start the GPS receiver, click the **Tools** menu, select **GPS**, then select **Start**. When you start the receiver, TripMaker Deluxe will automatically search for and configure your GPS receiver, then launch the GPS display.

To stop the receiver, click the **Tools** menu, select **GPS**, then select **Stop**.

Using the Navigator View, EZ View, and Map View

```
{button << Prev,Prev()}{button  
Close,CW("GPS")}}
```



You can choose from three different ways to view GPS information:

Navigator View shows you the TripMaker Deluxe map with the compass icon and the "dashboard", a set of dials and gauges displaying current information about your direction, speed, distance traveled, and so on.

EZ View displays the dashboard full-screen to make it easier to read.

Map View displays the map and icon full-screen.

