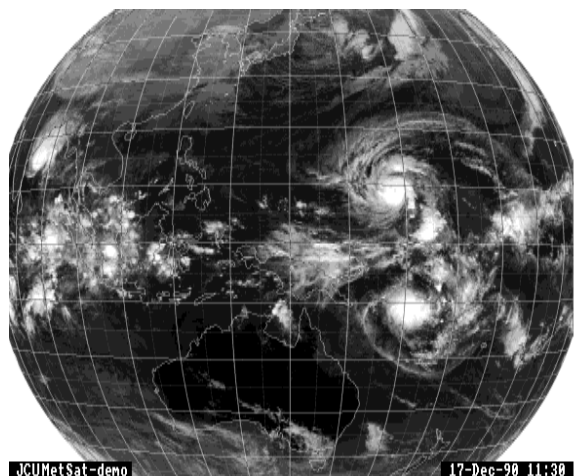


# JCUWeatherView-PC

## Software for Displaying and Processing Weather Satellite Pictures.



Globe received with the  
JCUWeatherView Receiving System.

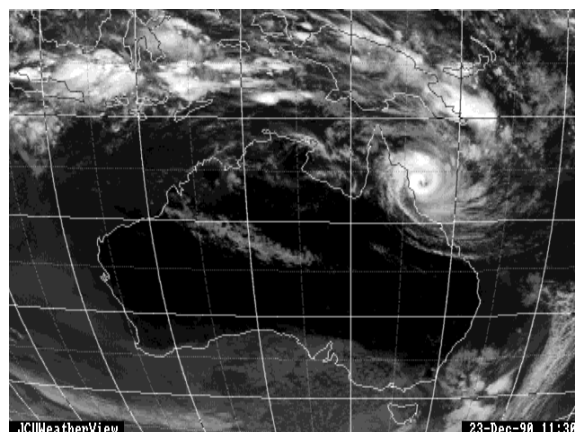
The JCUWeatherView-PC software is primarily designed for displaying pictures transmitted by the Geostationary Weather Satellites and recorded by the JCUWeatherView Weather Satellite Receiving System. The pictures can be displayed either singly or as an animated sequence in black and white or in a false colour scheme. The program can also be used as a flexible IFF format file animator. The picture displayed can be printed by the software. The software will display and print Weather satellite pictures on any PC clone with at least 640 kByte memory, an EGA or VGA display and a hard disk. A minimum of 384 kByte extended memory is required for an animated sequence to be displayed. The program will take full advantage of additional memory to display longer length sequences. The JCUWeatherView software has been designed to be very user friendly and simple to operate. Context sensitive help is available by pressing the F1 key.

The JCUWeatherView System consists of a Reference Manual and a program and installation disk, no pictures are included. The JCUWeatherView Plus System consists of a Reference Manual, a program and installation disk and 10 720 kByte disks or 5 1.44 MByte disks with pictures and sequences. The number of pictures that can be shown in an animated sequence is purely determined by the amount of memory of the computer. The maximum speed that sequences can be displayed at is dependent on the type of graphics card and the type of computer. Speeds of up to 30 pictures per second are typical. These sequences are useful in showing the movements of fronts, storms and cyclones. A sequence of Globe pictures is very valuable in the teaching of movements of weather patterns during Geography classes at High Schools. Up to date pictures are normally transferred to the Public area on the James Cook University's "Marlin" computer. These pictures can be accessed via Modem or computer communication networks such as AARNet or InterNet. Registered users are given a password to download these up to date pictures.

### Costs

The JCUWeatherView System (1 disk)	\$149
The JCUWeatherView Plus System (11 720K disks)	\$299
For Educational Institutions: Multi-user licence :	
for 4th and subsequent set, per computer	\$99
Additional picture disks,	
first disk.	\$30
further disks.	\$15
DC 6150 Cartridge tape of Current Pictures	\$80

All the above prices include packing and postage inside Australia.



Cloudmap of Australia

*For further details contact Prof. C. J. Kikkert,  
Department of Electrical and Computer Engineering,  
James Cook University of North Queensland,  
Townsville, Queensland, Australia, 4811.  
Ph. 077-814259/814299 Fax.077-251348  
Email: eecjk@marlin.jcu.edu.au*

Sequences on disk available include Typical Summer and Winter Weather of Australia and the Globe (as seen by the Satellite), Typhoons Gordon and Abe, Cyclones Aivu and Ivor, and Mt Pinatubo erupting.