

Spam Crusher Enterprise

Email. It's a vital part of your organizations life blood. You use it to communicate with co-workers, clients, friends and loved ones. You use it to do business with people around the world. Unfortunately, some people use it to bombard you with "SPAM." SPAM is the techie word for "junk" or "unsolicited email" and it's flooding the Internet and *your* Inbox!

Spam Crusher Enterprise is designed to filter unwanted email for your entire organization, while allowing the email you want to receive. Spam Crusher Enterprise is really easy to set up. Just install it, follow the simple setup wizard. Then you will already be blocking spam for your entire organization.

[How does it work?](#)

[How do I set it up?](#)

[How do my users get to their spam?](#)

[What is Spam Crusher Enterprise doing?](#)

[Where will Spam Crusher Enterprise send our good email?](#)

[Where does Spam Crusher Enterprise store the spam for my organization?](#)

[How do I specify valid domains for Spam Crusher Enterprise to process mail for?](#)

How do I order? [Order Online](#) or [Print Order Form](#)

[Contact Us](#)

How does it work?

Spam Crusher Enterprise sits between the Internet and your email server, similar to a "gateway". Spam Crusher Enterprise sits between the Internet and your email server, similar to a "gateway". It handles all email traffic for the domains you choose. It blocks spam and stores it on the server you installed it on. And immediately forwards all good mail on to your actual mail server.

IMPORTANT: Spam Crusher Enterprise does NOT touch your outgoing email. Also it does NOT touch your internal email.

Your users or you the Admin can provide a "friends" list. The **Friends List** is the list of people or domains you always want email from no matter what.

If an email is not in the user's Friends List, or the main organization's Friends List, it is scanned for a list of **Acceptable Phrases** that you the admin or the user provides. Acceptable Phrases could include your company's product names for example. An email containing an Acceptable Phrase will always be accepted as good email.

Once an email passes these 2 checks, it is then scanned with our extensive filter. If the email passes our filter it is then sent to the email server.

How do I set it up?

1. Install Spam Crusher Enterprise on a machine where the SMTP port is available. Make a note of the IP address Spam Crusher Enterprise will wait for email on.
2. Logon to Spam Crusher Enterprise with the URL given to you by the Setup program and set up your accounts. If your Email server supports LDAP, this can take just a few seconds to for your entire organization.

You can also Import an account list or if you'd rather you can setup accounts one at a time by hand.

3. Change your MX record in your DNS to point all mail traffic for your domain(s) to your Spam Crusher Enterprise IP address. Within the Spam Crusher Enterprise configuration you identify the name of the actual mail server to send good mail too. For example, mail.yourdomain.com.

Spam Crusher Enterprise Version 1.0 Order Form and Registration

To print this form, click on the 'File' menu, then click on the 'Print Topic' option.

Name _____

Company _____

Address _____

City _____ State _____ Zip _____

Phone (____) _____ - _____ Fax (____) _____ - _____ e-mail _____

Important: Is this your first product from American Systems? () Yes () No

Number of Copies:

25 user pack - \$395.00

50 user pack - \$695.00

Tax: (Texas residents add 8 1/4% sales tax)

Total:

American Express (), Visa () or MasterCard () Number _____

Exp. Date _____

Signature: _____

Make checks and money orders payable to American Systems.

Purchase Orders are welcome!

Call us toll free at 1-888-892-4310

Mail, or Fax your check or credit card details to :

American Systems
P.O. Box 93747
Southlake, TX 76092
Care of Windows Utilities Division
Fax:(817)485-2193

or **Order Online** at <http://www.americansys.com> and get the software right away!

Where did you get your evaluation copy from?

- () Internet
- () Vendor
- () BBS
- () CD-ROM
- () Friend
- () Other

Name of source _____

Note: Prices are effective May 1, 2004 and are subject to change. Please enclose any comments you have.

Contact Us

American Systems provides user support to registered versions via mail, and/or telephone.

American Systems will answer questions and resolve serious bugs for the first three months after registration. For problems involving a specific hardware or software environment or feature, we may choose not to modify the program. In that case, if a problem is reported within three months after purchase, then we shall offer to refund the user's purchase price.

If a bug prevents you from evaluating Spam Crusher Enterprise during the first 30 days (prior to purchase), American Systems will attempt to assist but is not under obligation to resolve issues beyond our control.

Phone:

(817)485-6547

Fax:

(817)485-2193

Email:

Need Help with Spam Crusher Enterprise? support@americansys.com

Do you have a question for sales? sales@americansys.com

Web:

<http://www.americansys.com>

Enterprise. Visit our online discussion group on our web site for further help with Spam Crusher

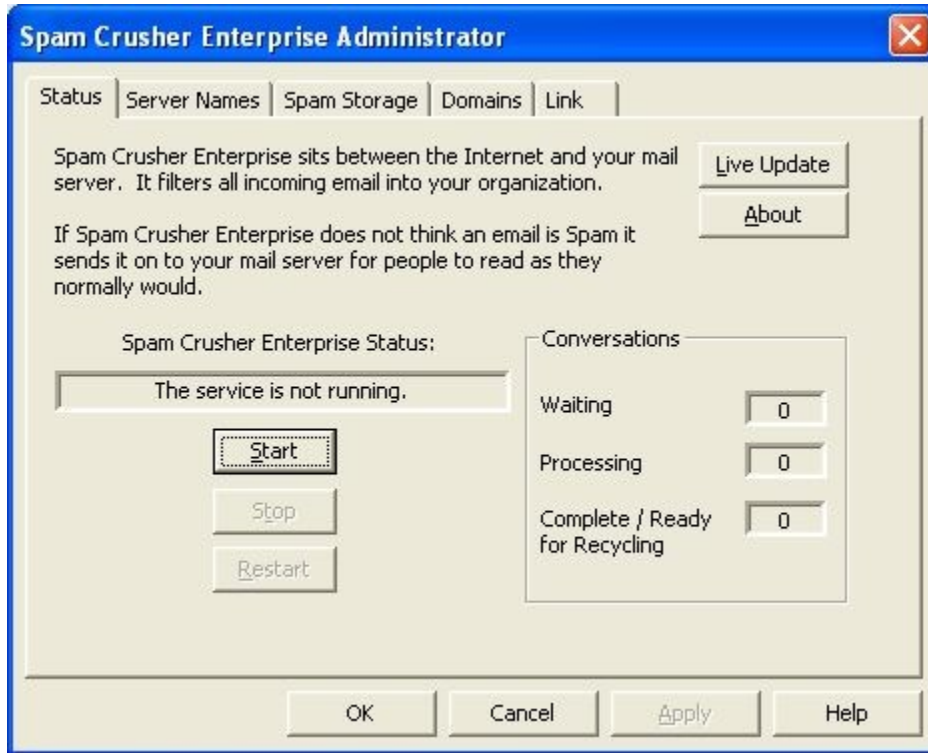
Address:

American Systems
P.O. Box 93747
Southlake, TX, 76092

Please share the evaluation version of Spam Crusher Enterprise with others for the purpose of evaluation as long as it is unaltered and distributed in its entirety.

What is Spam Crusher Enterprise doing?

This window tells you what Spam Crusher Enterprise is doing. You can stop, start, and restart the Spam Crusher Enterprise here. You can also see how many incoming conversations are being processed, how many are waiting, and how many are waiting to be recycled into the thread pool.



Where will Spam Crusher Enterprise send our good email?

First you must identify the name of the spam server and how it would be addressed on the Internet. spam.yourdomain.com is an example. You should be able to be on the network and be able to ping your spam server with this name.

Second type in the name of your mail server. mail.yourdomain.com for example.

Finally sometimes email servers require you to login to send mail. This prevents spammers from using your mail server to send spam. If your server does NOT require a logint to send mail, just leave the User Id and Password blank.

Spam Crusher Enterprise Administrator

Status | **Server Names** | Spam Storage | Domains | Link

What is the name of this server? For example, spamcrusher.yourdomain.com

spam.yourdomain.com 69.116.159.203

Note: You will have to add a record in your DNS called spamcrusher within your chosen domain. Then add a MX record that points all mail to spamcrusher.yourdomain.com.

What is the name of the mail server (to send the good email too)?

mail.yourdomain.com 219.253.177.141

WARNING: If you put Spam Crusher Enterprise on the same physical machine as your email server you must have it running on a different IP address than your mail server.

Some email servers require that you use an User Id and Password to send mail. If you do, please type the user id and password that will allow mail to be sent to it.

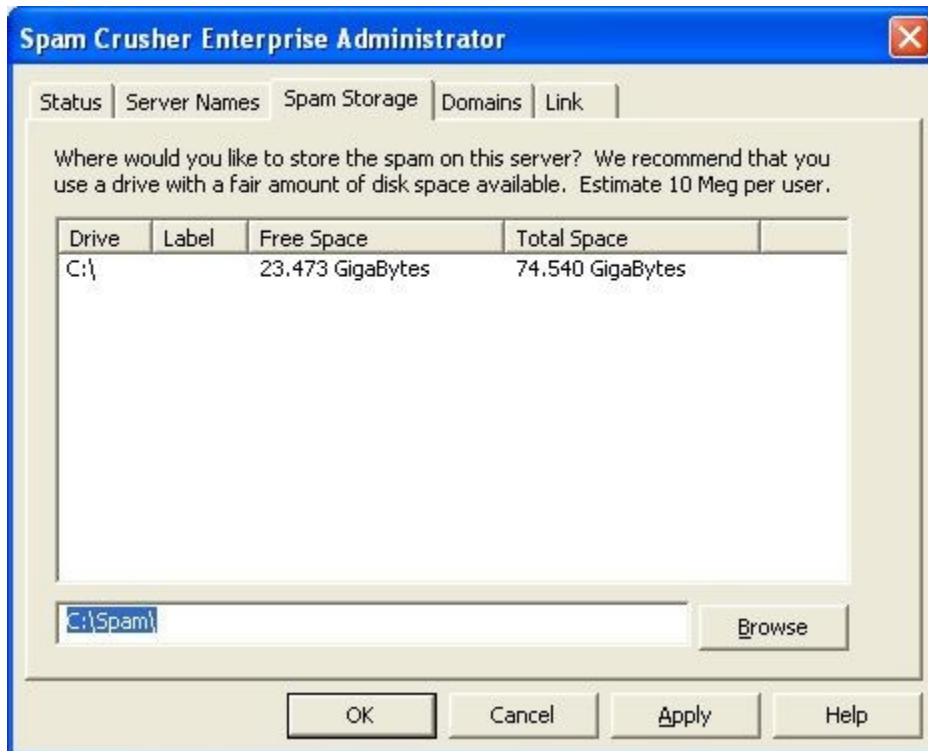
User Id mailman Password *****

OK Cancel Apply Help

Where does Spam Crusher Enterprise store the spam for my organization?

When you setup Spam Crusher Enterprise you identify a folder on the servers hard drive to store spam. Allow plenty of space for your entire organization.

Spam Crusher Enterprise will delete any spam that is more than 14 days old.



How do I specify valid domains for Spam Crusher Enterprise to process mail for?

If someone is trying to hack your email server to send spam through it Spam Crusher Enterprise will block them. This window is where you specify the valid domains for your organization. Any time someone tries to use your email server to send spam to domains that are not yours, Spam Crusher Enterprise will delete the spam without sending it to your email server.



How do my users get to their spam?

In the Link tab of your Configuration is the URL your users will use to login to get their spam. There they can delete their spam, or salvage it. They can also manage their Friends List, Acceptable Phrases, Filters etc...

If you log in as "admin" you can manage the global settings for all users, as well as some of the server settings.



