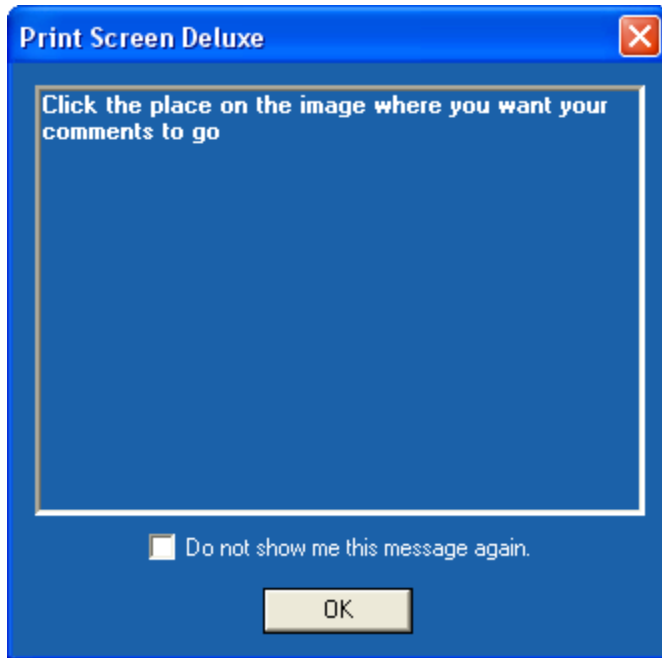
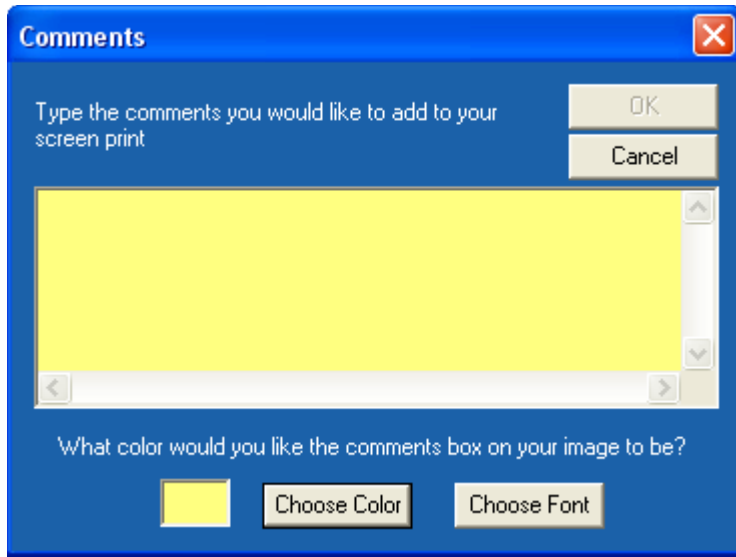


## Add text to the screen image

1. Click the image on the main Print Screen Deluxe window. A new window will appear with buttons on top and buttons down the left side.
2. On the left click "Text. The following message will appear.



2. Click <Ok> then your mouse will turn to a cross hair.
3. Click the location on the screen where you want your comment to go.
4. The following window will appear.



Type the comment you want to place on your image then choose the color of the rectangle. Here's what a comment looks like.

# Print Screen Deluxe

A product of American Systems

## Contents

Print Screen Deluxe is the original and really the ultimate screen capture utility. It provides a fast, easy, and intuitive way to capture, print, and save your screen. One keystroke does it all! With one keystroke you can capture and print the entire screen, the current window, a selected region, and more.

The new features in version 6.0 include:

- . Text Capture - click on any window and capture the text within
- . Capture a movie of your screen activity with audio to a video file (.avi)
- . Improved and simplified screens
- . Draw boxes on your images
- . Add a shadow or a torn edge to your images
- . Improved Arrows to point things out on your images

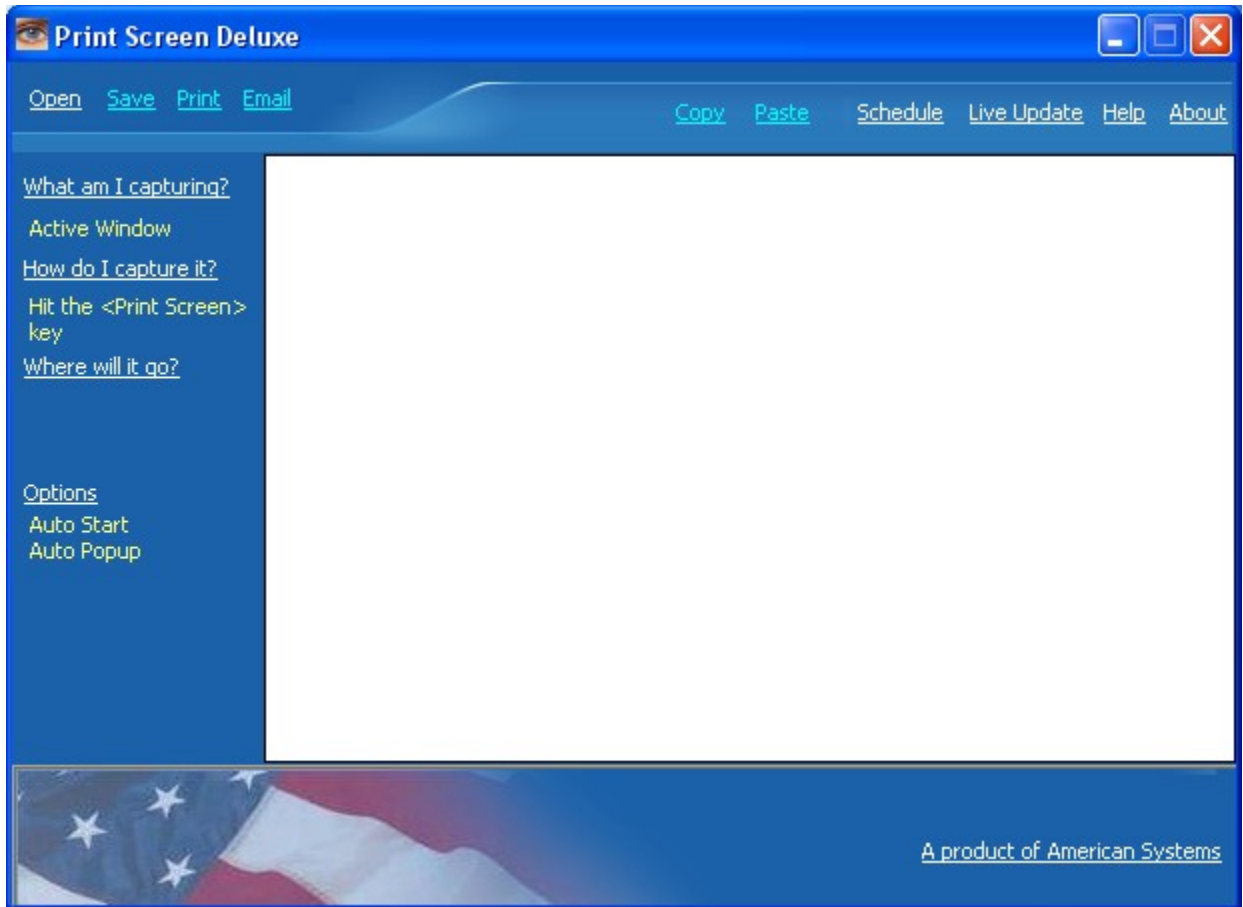
So easy-to-use, Print Screen Deluxe is perfect for both new and experienced users!

[How to use Print Screen Deluxe](#)

[Ordering Print Screen Deluxe](#)

[Product Support](#)

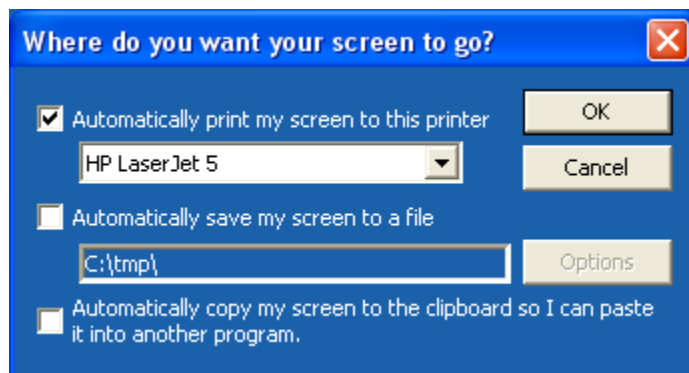
You can click on anything that is white and underlined.



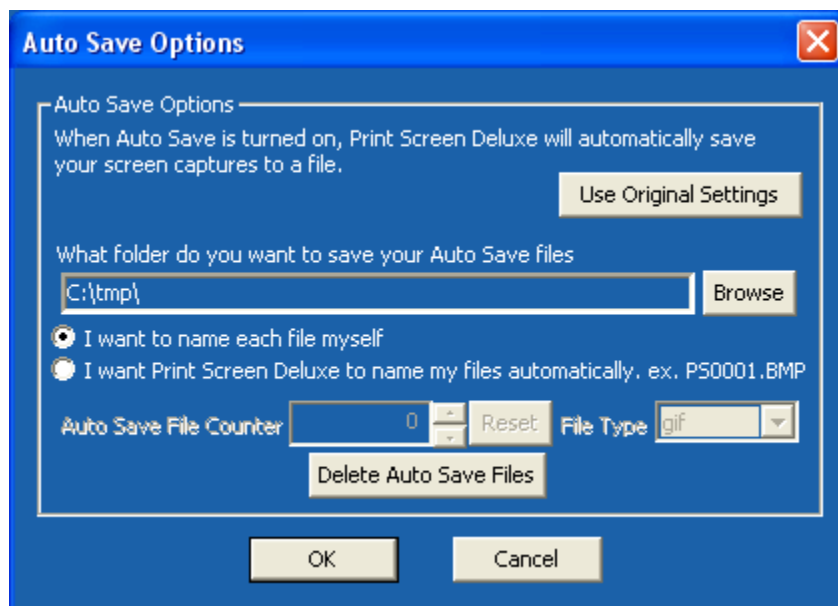
Copyright © 1994-2005, American Systems, All rights reserved.

## Automatically save my screen to a file

On the main window click "Where will it go?". The window below will appear.



Click "Automatically save my screen to a file". Make sure the check mark appears. If you want to have more control over where (and how) your images are saved click <Options>.



# How do I use Print Screen Deluxe?

Print Screen Deluxe is the original and really the ultimate screen capture utility. It provides a fast, easy, and intuitive way to capture, print, and save your screen. One keystroke does it all! With one keystroke you can capture and print the entire screen, the current window, a selected region, and more.

The new features in version 6.0 include:

- . Text Capture - click on any window and capture the text within
- . Capture a movie of your screen activity with audio to a video file (.avi)
- . Improved and simplified screens
- . Draw boxes on your images
- . Add a shadow or a torn edge to your images
- . Improved Arrows to point things out on your images

So easy-to-use, Print Screen Deluxe is perfect for both new and experienced users!

## How do I...

[Capture a screen or capture a portion of the screen or window?](#)

[Capture the Text within a window?](#)

[Use the links on the main Print Screen Deluxe window?](#)

[Automatically print my screen capture?](#)

[Add a tear off a corner or an edge of an image?](#)

[Draw a box around part of the image?](#)

[Add a shadow to the image?](#)

[Automatically make my printout darker or lighter?](#)

[Change the hotkey to initiate the screen capture?](#)

[Activate Print Screen Deluxe automatically when Windows 95/98/Me or Window NT/2000/XP/2003 starts?](#)

[Make a video of things I do on my screen?](#)

[Email an image?](#)

[Automatically save my screen capture to a file?](#)

[Crop off sections of the image?](#)

[How do I correct my mistakes \(i.e. use Undo\)?](#)

[Add Comments to my image?](#)

[Enhance the image with imaging effects?](#)

[Resize the image?](#)

[Print the Current Date/Time, User's Name, and/or Filename on the printout?](#)

[Blowup the size of the printout?](#)

[Control the location on the page where the image prints?](#)

[Specify a time delay before the screen capture occurs?](#)

[Specify the folder that the Auto Save option uses?](#)

[Schedule a screen capture?](#)

[How do I highlight a portion of my image in yellow - like a yellow highlighter marker?](#)

[How do I put arrows on my image to point out important things?](#)

Use command line arguments when Print Screen Deluxe starts?  
Write my own program using COM to control Print Screen Deluxe?

How do I get the latest version of Print Screen Deluxe?  
Visit American Systems on the Web?

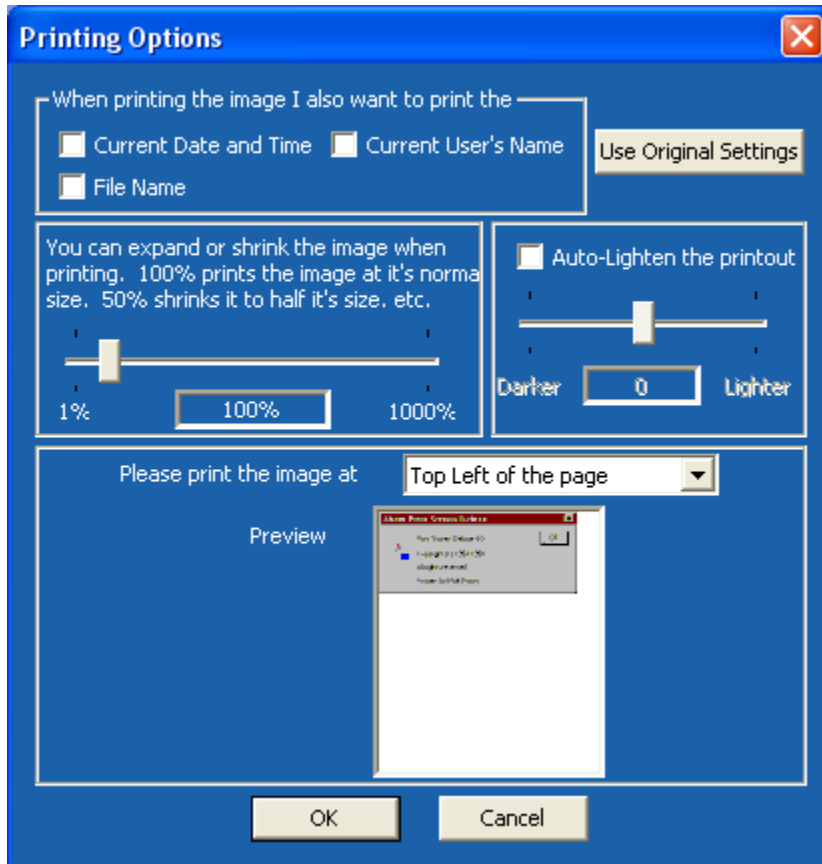
Ordering Print Screen Deluxe  
Product Support

# How to I automatically make a printout lighter or darker?

How to I automatically make a printout lighter or darker?

To change the default settings for the program so they will be set the way you like everytime you print something just do the following:

On the main window click "Options". Then click <Printing Options>. The following window will appear.



Check the 'Auto-lighten the printout' box. And slide the bar from Darker to Lighter to suit your needs.



## Auto Print Screen Capture?

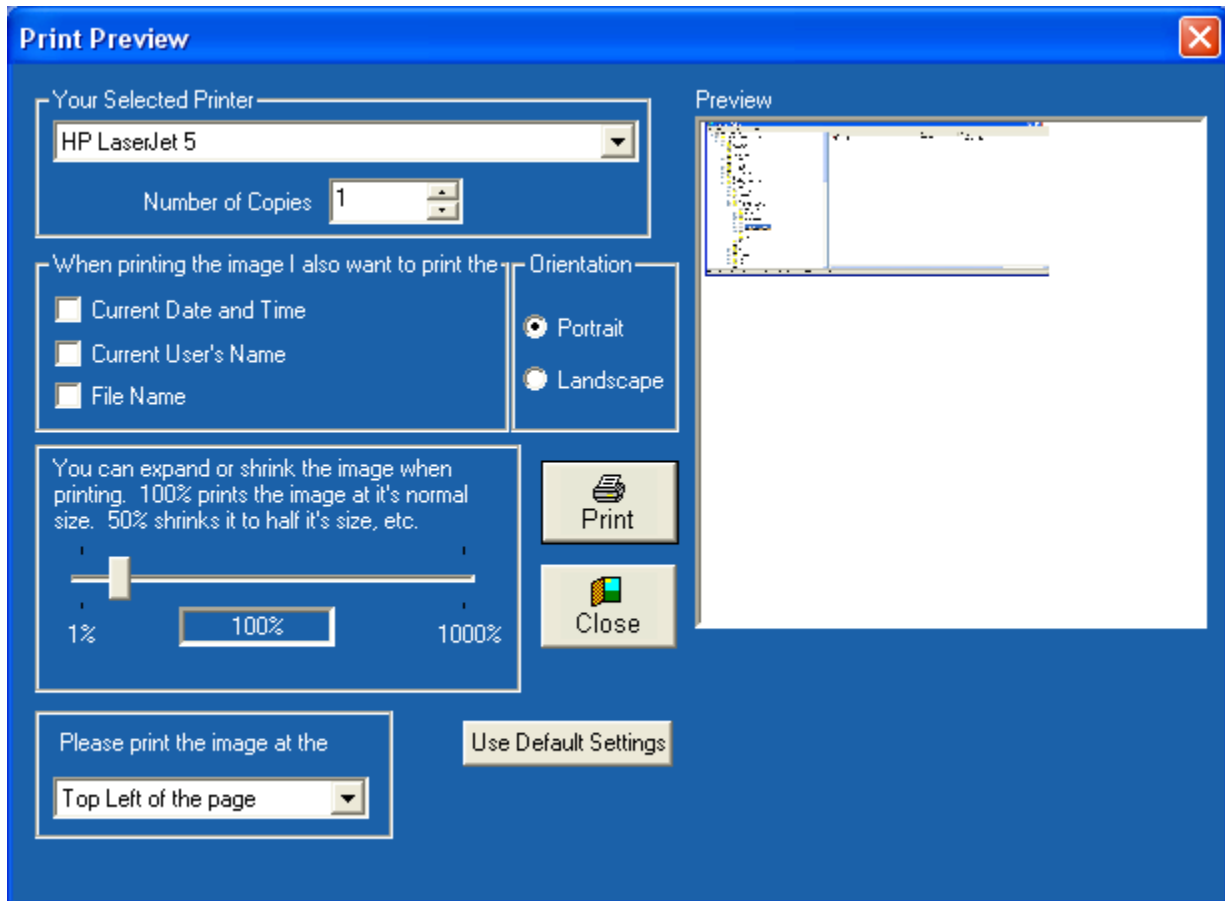
1. Make sure that you have the 'Options'..'Auto Print' option checked. If it is not, then click on it. If you look at it again it will be checked.
2. Now perform a screen capture by hitting the hot key (default is <PrintScreen>)
3. When the capture is complete, watch your printer. Your screen capture will print on your printer.

## Automatically Start Print Screen Deluxe when Windows starts

On the main Print Screen Deluxe window click on "Options".

Make sure that the "Automatically Start and Hide" option is checked. The next time you start Windows, Print Screen Deluxe will start with the icon in the system tray (clock window on the task bar)

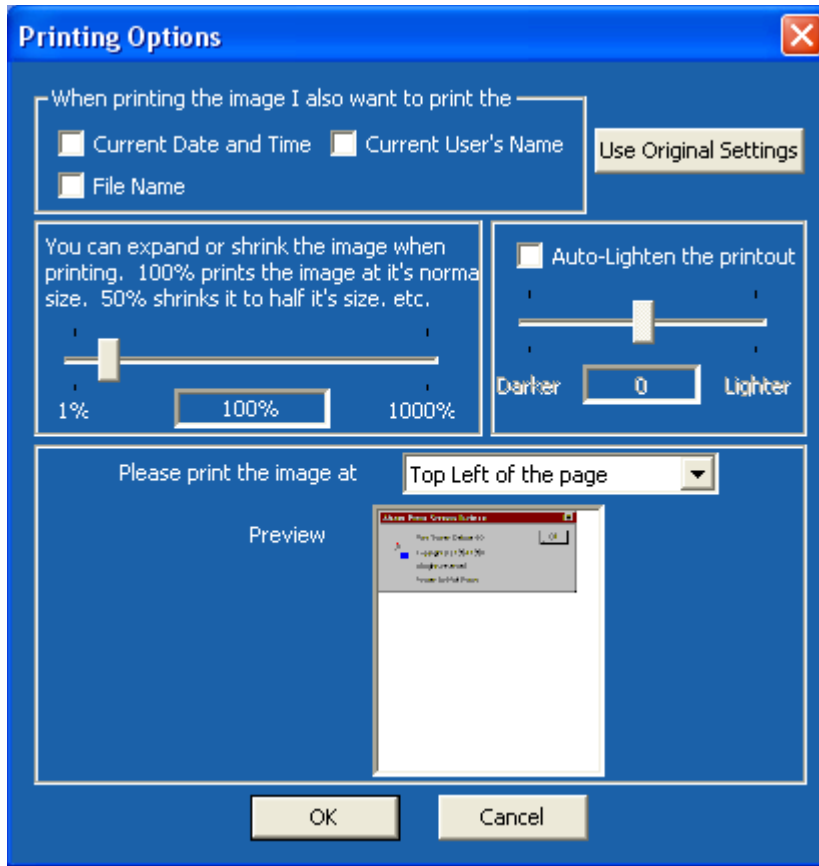
When you click 'Print' link you'll see the following window.



You can set options for this printout like the amount to shrink or expand the image in the printout, printing the current date and time, the user's name, the image file name, etc. Then click <Print>

To change the default settings for the program so they will be set the way you like everytime you print something just do the following:

1. Click File..Preferences, then Program. The following window will appear.

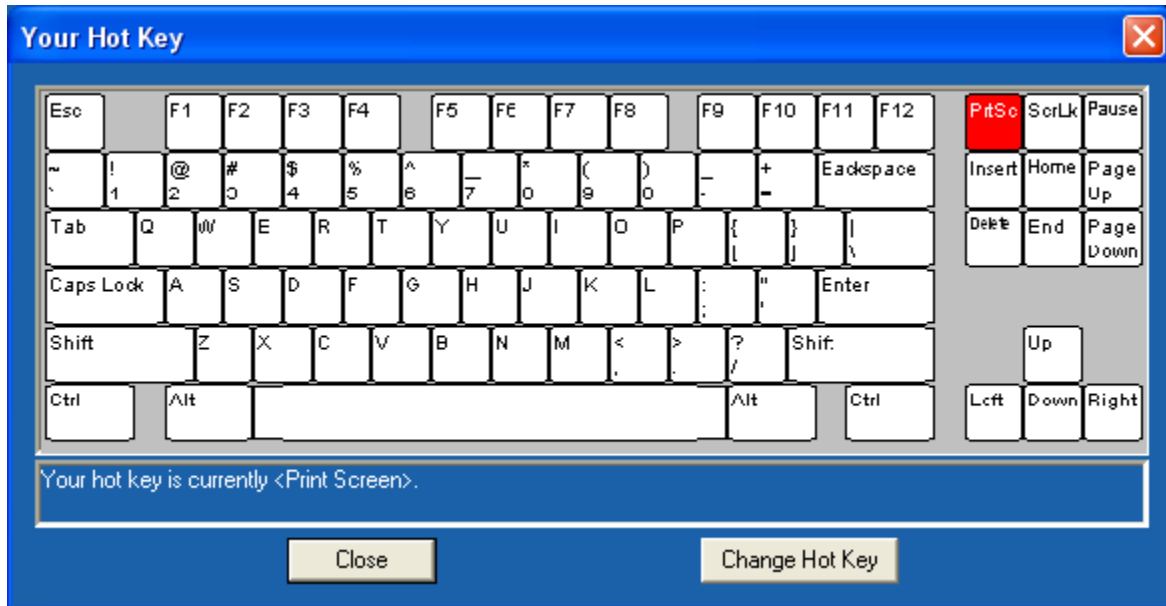


2. Move the slider bar to the desired image size. The maximum printout size is 1000% of the original image size.

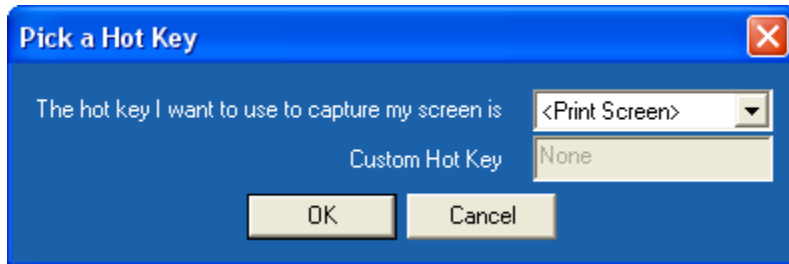
## Change the Hot Key

On the main Print Screen Deluxe window click on "How do I capture it?"

You will see this window pop up.



This window shows you a picture of your keyboard and which key is your hot key. Click the <Change Hot Key> button.



If you want to use <Print Screen> as your hot key, select it from the drop down list. If not, select <Custom> in the drop down list and in the Custom Hot Key field, press the hot key on your keyboard you want. You'll see the name of that key display in the Custom Hot Key field. Then click <Ok>, then <Close>.

## COM Interface for Programmers

Print Screen Deluxe comes with a built in COM interface for programmers. If you want to write software that includes the ability to capture, print and save screens, you will want to have Print Screen Deluxe. Here are a list of the functions and some sample code.

First of all, add to your project... a reference to "Print Screen Deluxe 1.0 <Type Library>".

Here are all of the methods in the object. They are fairly self explanatory.

***BYTE CaptureFullScreen(void);***  
***BYTE CaptureActiveWindow(void);***  
***BYTE CaptureWindow(void);***  
***BYTE CaptureClientArea(void);***  
***BYTE CaptureClipboardImage(void);***  
***BYTE CaptureRegion(void);***  
***BYTE CaptureMenu(void);***

All of the Capture methods capture the part of the screen they describe. The screen image is held in memory until the COM object is released or until you capture the screen again.

***void Print(void);***

Prints the screen last captured to the default printer.

***void SaveFile(BSTR FilePath);***

Saves the screen last captured to the file you provide in the FilePath parameter.

**VB Sample:**

```
Private Sub Button1_Click(ByVal sender As System.Object, ByVal e As
System.EventArgs) Handles Button1.Click
    Dim psd = CreateObject("PrintScreenDeluxe.Interface")
    psd.CaptureFullScreen()
    psd.Print()
End Sub
```

**C++ Sample:**

```
void Foo()
{
    CInterface psd;

    psd.CreateDispatch("PrintScreenDeluxe.Interface");
    psd.CaptureFullScreen();
}
```

```
    psd.SaveFile("c:\\tmp\\FullScreen.BMP");  
    psd.ReleaseDispatch();  
}
```

#### C# Sample:

```
private void button1_Click(object sender, System.EventArgs e)  
{  
    PrintScreenDeluxeLib.Interface psd;  
  
    psd = new PrintScreenDeluxeLib.InterfaceClass();  
    psd.CaptureFullScreen();  
    psd.Print();  
}
```

# What Command Line Arguments are available in Print Screen Deluxe?

## Command Line Options

/h

Run Print Screen Deluxe as a hidden application. You will not see a Window or an icon on the desktop when the program is running. 'AutoPrint' is the only option activated. Therefore whenever you press the screen capture hot key (default is <PrintScreen>) your screen or window will automatically print to your printer.

/m

Run Print Screen Deluxe and minimize it to the tray.



## How do I crop off sections of the image?

Once you have captured or opened an image, you can crop or cut out sections of the image.

1. Just draw a rectangle with your mouse around the area you want to cut or crop. If you want a shape other than a rectangle, click the Edit..Select Region menu. And select the shape you want to crop. (Rectangle, Round Rectangle, Ellipse, or Freehand). Then click the mouse button and hold it down to start drawing your outline. Drag your mouse to the other end of the outline and release it.

3. Click the 'Edit'..'Crop' command if you want to cut out everything outside of the dashed line. Or click 'Edit'..'Cut' if you want to cut out everything inside the dashed line.

## Email an screen print?

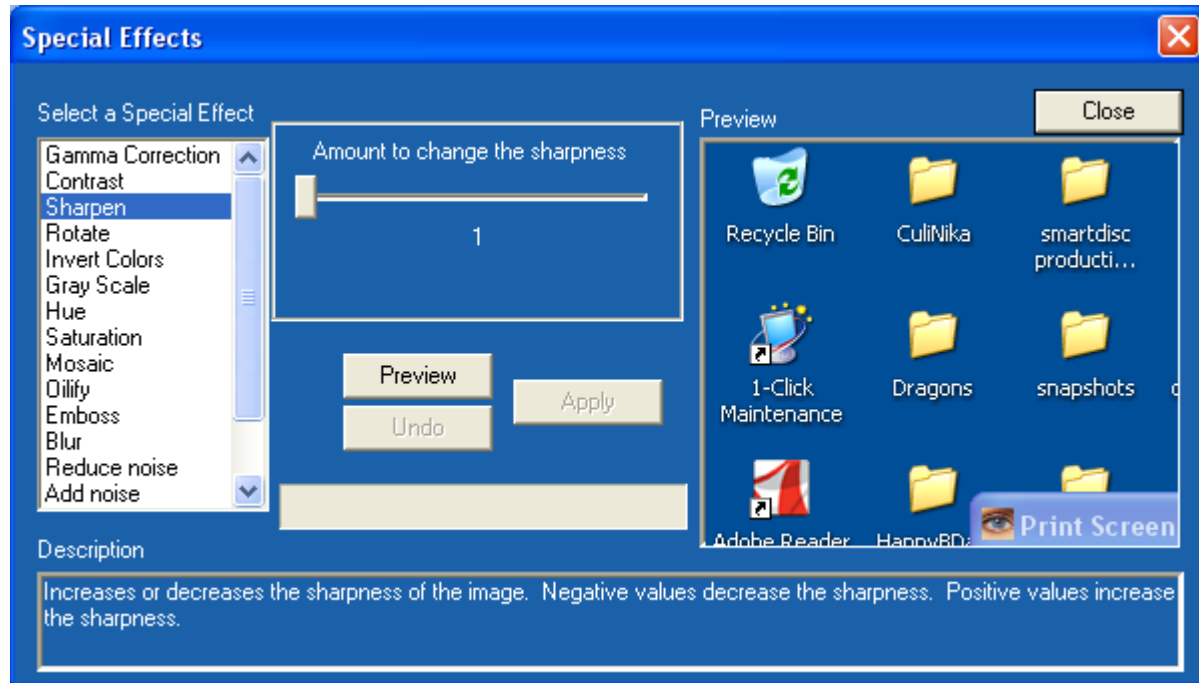
*Note: The Send Mail output option is only supported if you have a MAPI mail client installed (for example, Microsoft Exchange).*

Once you open an image file or capture an image, click on the 'Email' link on the main Print Screen Deluxe window. Your mail system create an email message containing your image and allow you to further edit your email. At that point you can send, file, or do whatever you wish with your email.

Please note that once you click on the 'Email' command your email system takes over. Print Screen Deluxe has no control over what happens in your email system.

## Enhance the image with imaging effects

Click the image on the main Print Screen Deluxe window. A new window will appear with buttons along the top and left



On the left click "Effects". You'll see the following window.

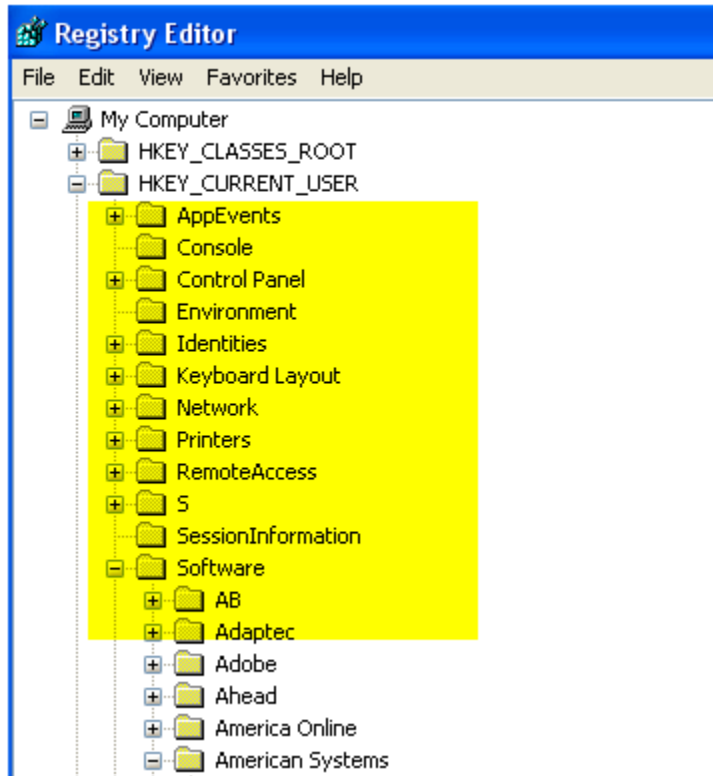
Choose the special effect you want to apply. Click <Apply> to test the effect. Click <Undo> to undo the effect you just tried.

When finished, click the <Apply> button to save your changes..

## How do I highlight a portion of my image in yellow?

Click the image on the main window. You'll see a new window with buttons on the top and left.

On the left click "Mark". This will enable you to highlight a rectangle with yellow, much like you would with a yellow highlighter marker. Once you select this command just draw a rectangle around the area you want to highlight. The screen shot below is similar to what you will see.

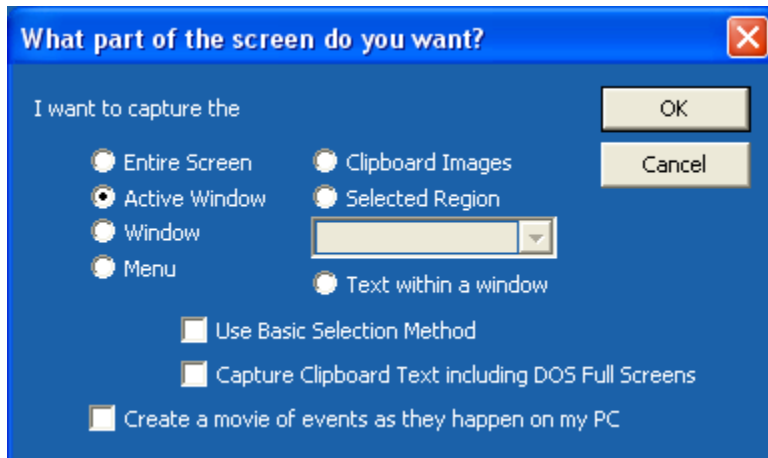


## How do I Capture a Screen?

Start by simply hitting the <PrintScreen> key on your keyboard and let the program do the rest.

If you want to capture something other than the full screen click "What am I capturing?" on the main window.

You can select what part of the screen you want by clicking "What am I capturing?" on the main window menu. You will see the following window appear.



**Entire Screen** - is everything you see on the screen.

**Active Window** - is the window that you are currently using, including the title.

**Window** - is the interior of the window you are currently using. Could even be as simple as a button or a field. You use your mouse to click on the window you want to capture.

**Menu** - Capture only a menu. You open the menu then hit <Print Screen> on your keyboard.

**Clipboard Images** - When you : "copy" or "cut" images to the clipboard, Print Screen Deluxe can automatically grab them and let you process them.

**Selected Region** - You can draw a Rectangle, Triangle, Ellipse (Circle), or a Freehand cutout of the screen and Print Screen Deluxe will let you process the image

**Text within a window** - Click on a window or a list of any kind anywhere and Print Screen Deluxe can grab the words within it. (This is NEW in 6.0).

With Print Screen Deluxe you can capture any of the following

- The entire screen
- The current active window
- The text within a window (NEW in 6.0)
- A selected rectangle region of the screen
- A selected round rectangle region of the screen
- A selected ellipse (circle) region of the screen
- A selected freehand outline region of the screen

- A selected triangle region of the screen
- A selected polygon outline region of the screen
- Any window
- Any menu
- Clipboard Images
- Clipboard Text and DOS Screens
- DirectX Screens

# What do the links on the main window do?

## **Open**

Open a previously saved screen print in a awd, bmp, cal, cmp, cur, dic, eps, fxs, gif, img, ico, ica, jpg, mac, msp, pct, pcx, png, psd, ras, tga, tif wmf, or wpg file. Just type the name of the file you want to open and press <OK>, or double click the desired file name to open the file. To change the file type, click the 'Files of type' list and select the new type.

These files can be read in by many Windows programs. If you are writing a document or presentation that you would like to import screen prints into, you will want to save them to a file.

The program will remember the directory you read your last file from and save the future screen prints there.

Note: You may also drag files into the Print Screen Deluxe window to open them.

## **Save**

Save the screen print to a file. Just type the name of the file you want to save the screen print as and press <OK>, or double click the desired file name. To change the file type, click the 'Files of type' list and select the new type.

These files can be read in by many Windows programs. If you are writing a document or presentation that you would like to import screen prints into, you will want to save them to a file.

The program will remember the directory you read your last file from and save the future screen prints there.

## **Print**

Prints the displayed screen to the printer and allows you to change a few of the options.

## **Email**

Attach the captured image to an email. Once the image is attached to the email, the email will be displayed. You can then enter your regular email text and data and send your email. The Send Mail output option is only supported if you have a MAPI mail client installed (for example, Microsoft Exchange).

## **Copy**

Copy the image to the clipboard.

## **Paste**

Paste the image on the clipboard into the Print Screen Deluxe window.

## **Schedule**

See Schedule a screen capture

**Live Update**

Downloads the newest release of Print Screen Deluxe if it is available.

**Help**

Displays the help manual for you to read or search through.

**About**

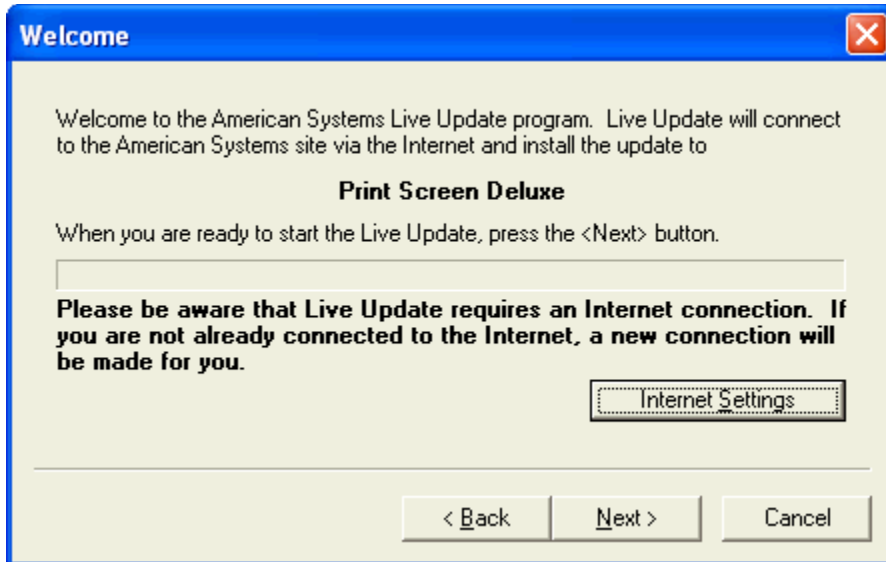
Displays the version of Print Screen Deluxe that you have installed. What do the links on the main window do? What do the links on the main window do?



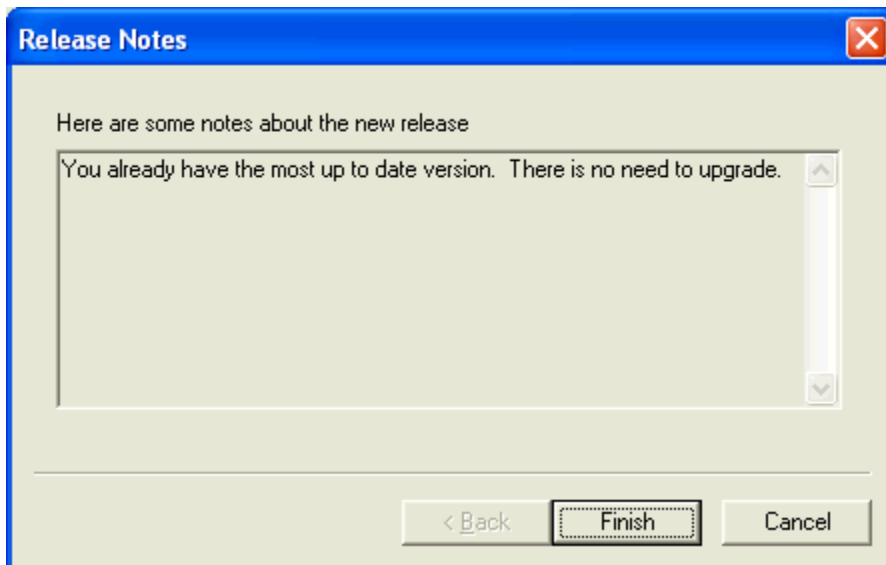
## Get the latest version of Print Screen Deluxe

Print Screen Deluxe has a really neat feature built in called "Live Update". Click the "Live Update" link on the main window.

Live Update will connect to the American Systems web site using your Internet connection and retrieve the latest upgrade and install it for you.

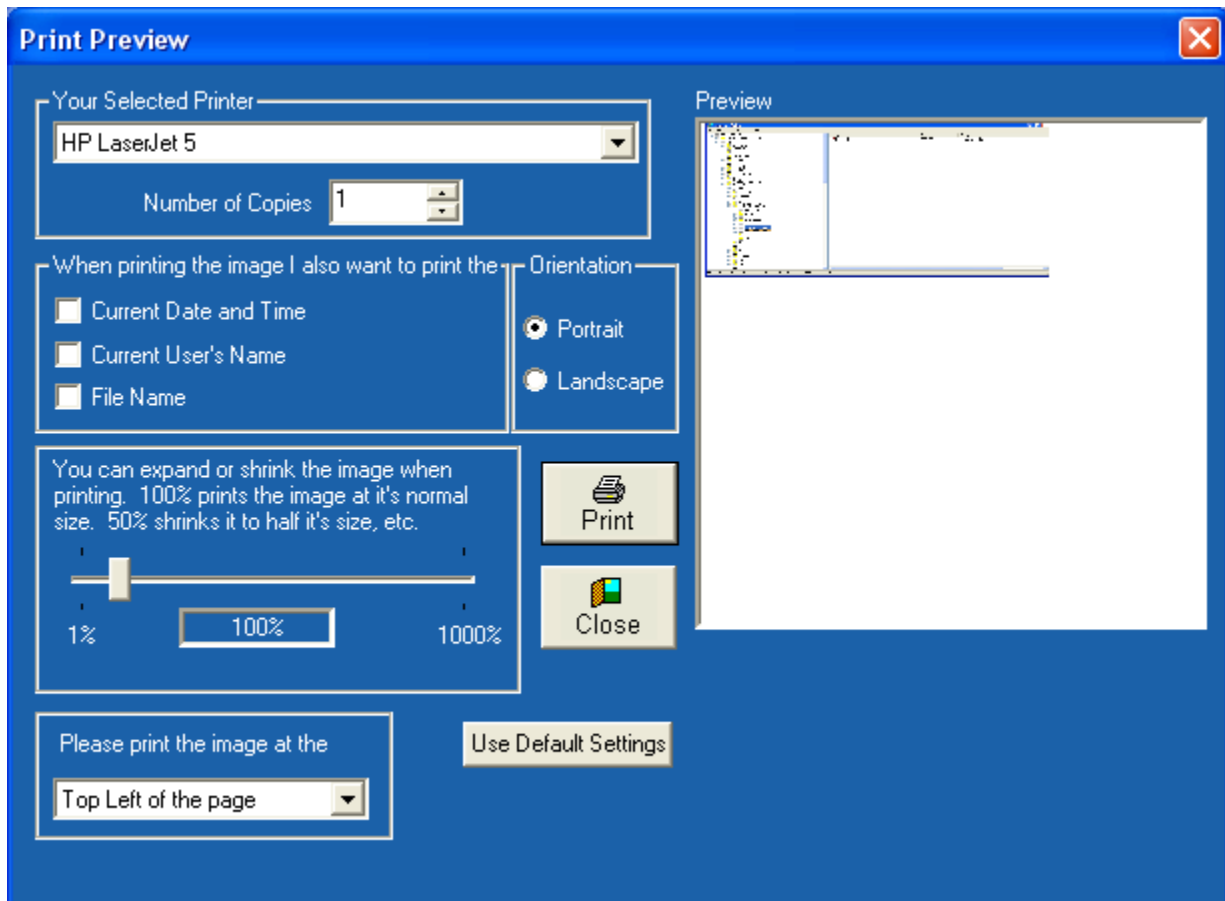


If you have the latest version you will see a message similar to the following.



Otherwise you will see a screen with the features the new upgrade adds. Just follow the instructions on the screen and install the new version.

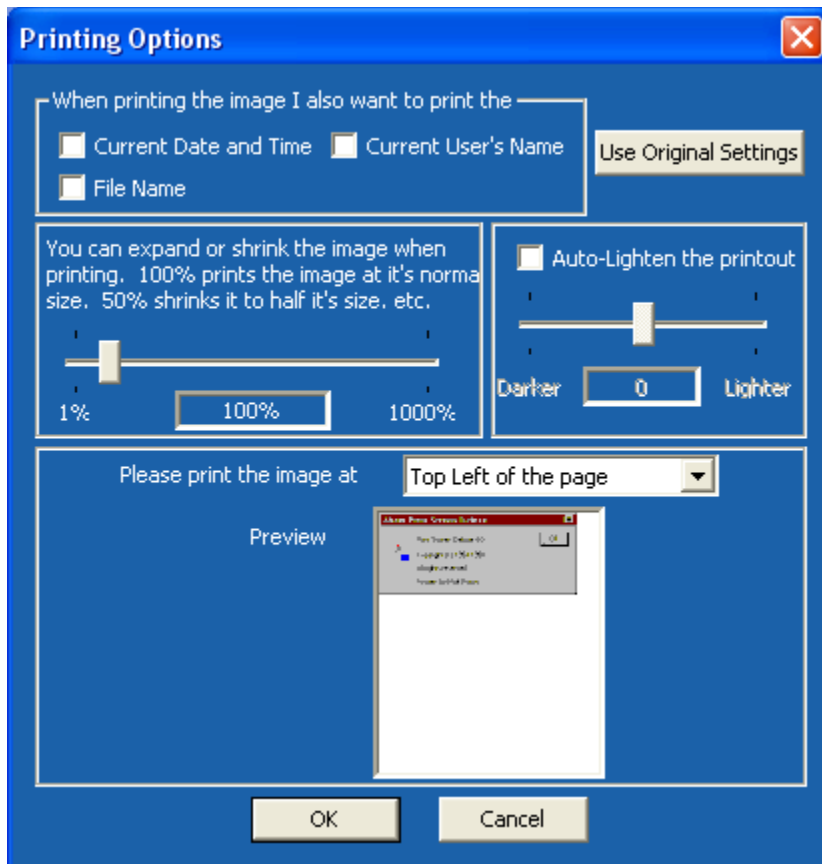
**Control the location on the page where the image prints**  
When you click "Print" you'll see the following window.



Just click the list at the bottom of the window to change the location on the page the image prints at. For example if you don't want it to print at the top left of the page, just click the list, and you'll see various choices. Just select one and you'll see what it will print out like on the Preview window.

To change the default settings for the program so they will be set the way you like everytime you print something just do the following:

1. On the main window click "Options". Then click <Printing Options>. The following window will appear.



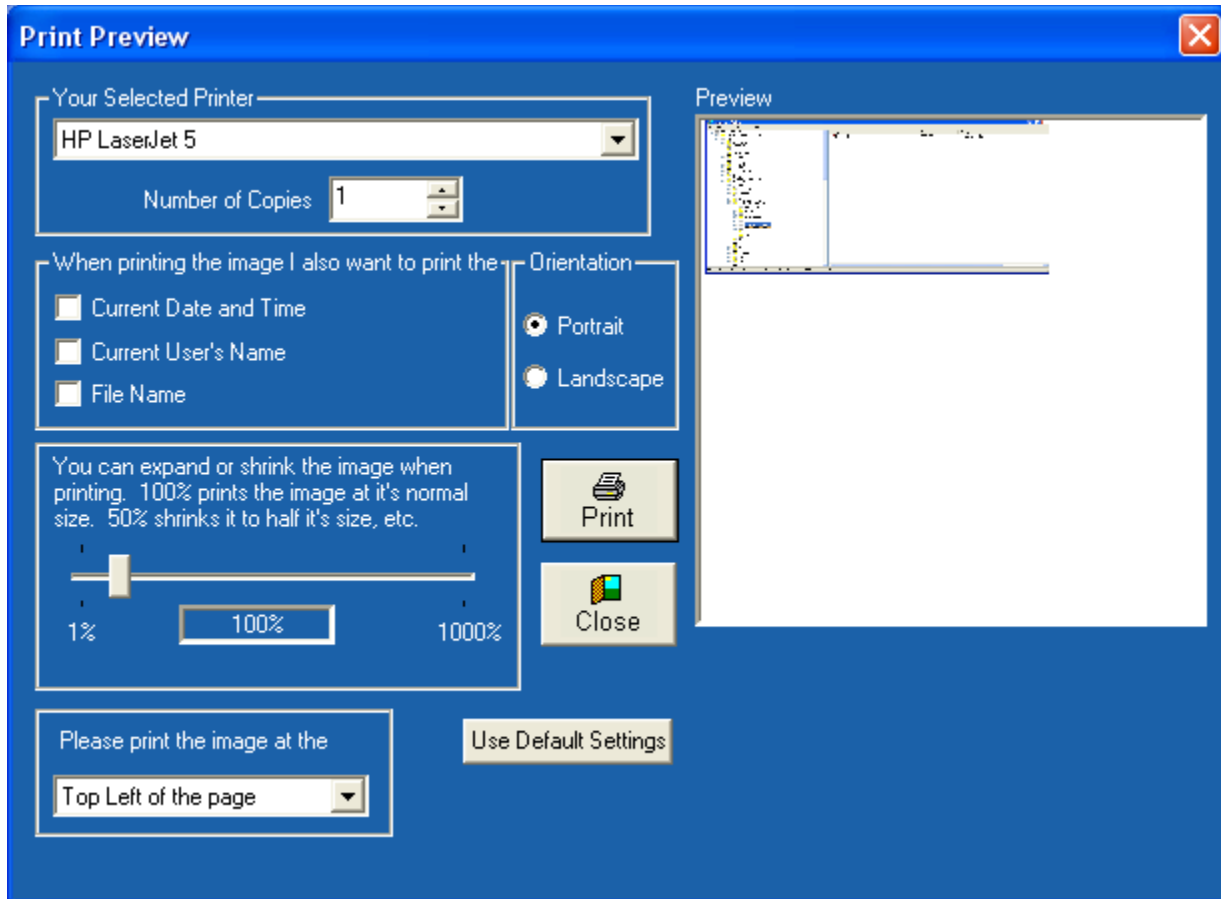
2. Click on the "Please print the image at" list to select where you want the image to print at. Your choices are:

- Top Left of the page
- Top Center of the page
- Top Right of the page
- Middle Left of the page
- Middle Center of the page
- Middle Right of the page
- Bottom Left of the page
- Bottom Center of the page
- Bottom Right of the page

Notice that the preview window changes everytime you select a different one. This give you an idea of where on the page it will print.

## Print the Current Date/Time, User's Name, and/or Filename on the printout

When you click Print you'll see the following window.



You can set options for this printout like printing the current date and time, the user's name, the image file name, etc. Then click <Print>

To change the default settings for the program so they will be set the way you like everytime you print something just do the following:

On the main window click "Options". Then click <Printing Options>. The following window will appear.

# Printing Options



When printing the image I also want to print the

- Current Date and Time
- Current User's Name
- File Name

Use Original Settings

You can expand or shrink the image when printing. 100% prints the image at it's normal size. 50% shrinks it to half it's size, etc.

1%  100% 1000%

Auto-Lighten the printout

Darker  Lighter

0

Please print the image at

Top Left of the page

Preview



OK

Cancel

## Product Support

American Systems provides user support to registered versions via mail, and/or telephone.

American Systems will answer questions and resolve serious bugs for the first three months after registration. For problems involving a specific hardware or software environment or feature, we may choose not to modify the program. In that case, if a problem is reported within three months after purchase, then we shall offer to refund the user's purchase price.

If a bug prevents you from evaluating Print Screen Deluxe during the first 30 days (prior to purchase), American Systems will attempt to assist but is not under obligation to resolve issues beyond our control.

Phone:

(817)485-6547

Fax:

(817)485-2193

Internet:

support@americansys.com

Address:

American Systems  
P.O. Box 93747  
Southlake, TX, 76092  
Care of Technical Support

Please share the evaluation version of Print Screen Deluxe with others for the purpose of evaluation as long as it is unaltered and distributed in its entirety.

[How to use Print Screen Deluxe](#)

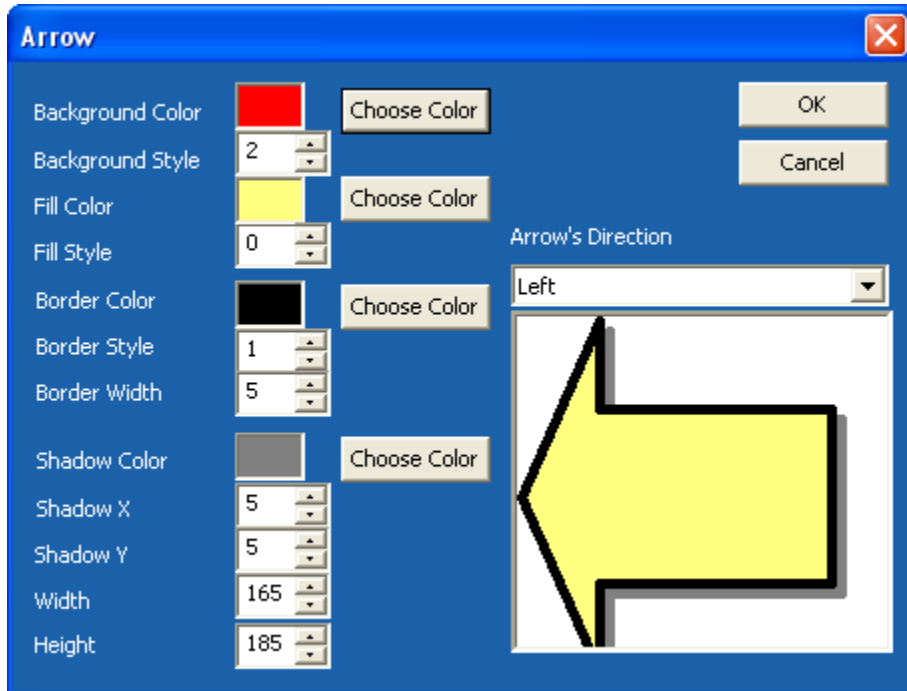
[Ordering Print Screen Deluxe](#)

# Arrows

Arrows can be very useful when you want to point out something on an image, or you want to draw someones attention to a certain part of an image.

You can make your arrow look as fancy, or as simple as you like.

Click the image on the main window. Then on the left click the "Arrow" button. You'll see this window.

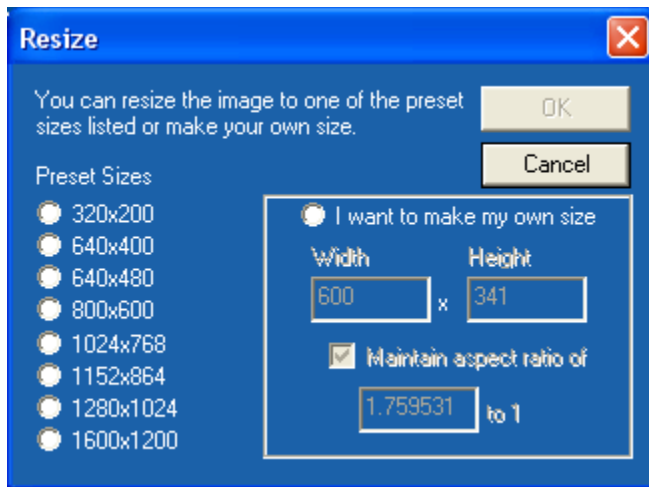


The most used options are the Width, Height, Shadow X, Shadow Y, and Border Width. Push the up and down arrow buttons to watch the arrow change. This will show you what your arrow will look like.

When you have the arrow the way you want, click <Ok> Then click the part of the image you want the arrow to point to.

Resize the image

Click the image on the main Print Screen Deluxe window. A new window will appear with buttons along the top and left



2. Choose the size you want to resize the image too. If you want to choose a custom size, click "I want to make my own size".

The 'Aspect Ratio' ensures that the image size is proportional.



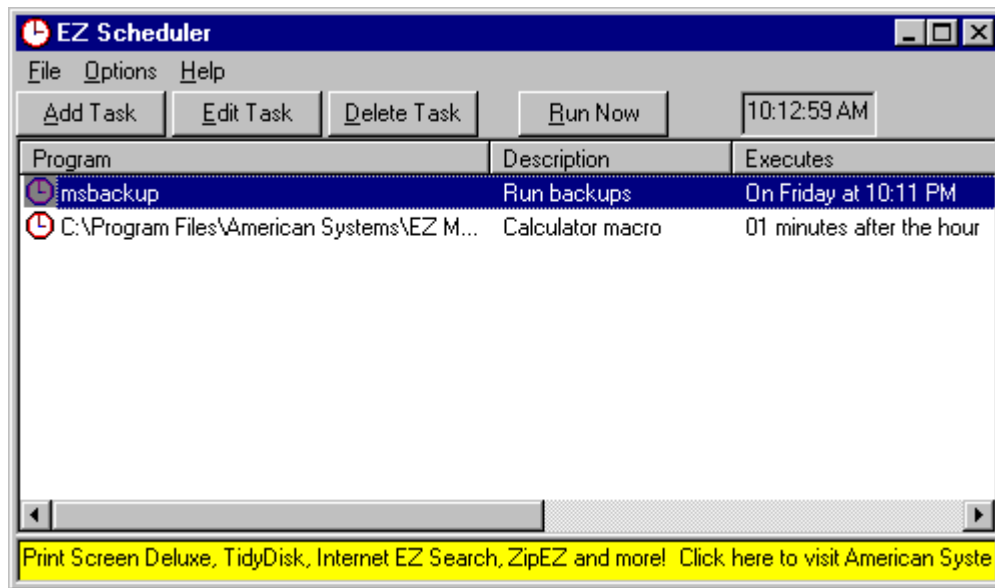
## Schedule a screen print

You may wish to schedule a screen capture to run at a particular time. We highly recommend EZ Scheduler from American Systems. EZ Scheduler is a FREE program from American Systems. It is not trialware, it is totally free. EZ Scheduler is specifically designed to work with Print Screen Deluxe and other American Systems products. It allows you to run screen captures and many other types of programs Hourly, Daily, Weekly, Monthly, Once, When Windows Starts, and more. You can download this program from our web site at

<http://www.americansys.com>

Notice on the Edit menu there is a "Schedule" command. When you have installed EZ Scheduler, the Schedule command prompts you to choose how you want to run your screen capture - Hourly, Daily, Weekly, Monthly, Once, When Windows Starts, etc. Select the time you want your capture to occur, and be sure to leave EZ Scheduler and Print Screen Deluxe running in your system tray. Your capture will take place at the specified time.

Below are some screen shots of EZ Scheduler.



Task



I want to run this task

- When Windows Starts Up
- Once
- Hourly
- Daily
- Weekly
- Monthly
- Yearly
- Other

< Back

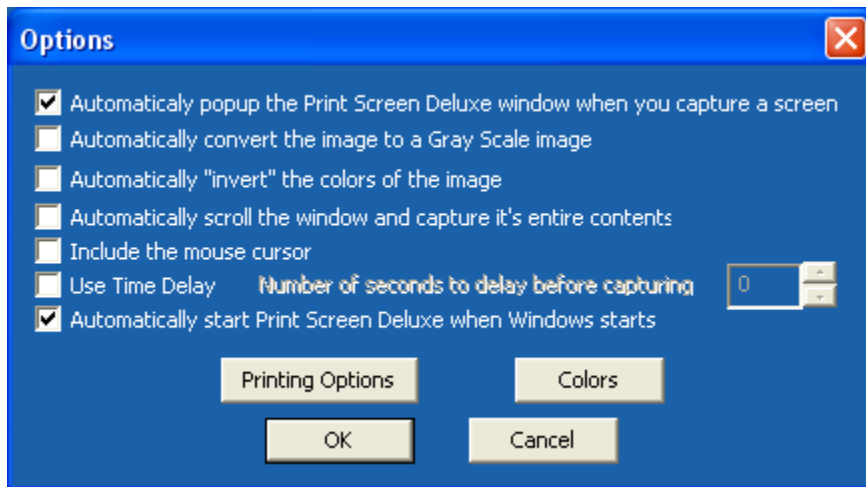
Next >

Cancel

Help

## Specify a time delay before the screen capture occurs

On the main window click "Options". The window below will appear.



Notice the Time Delay options at the bottom of the window.

If you want to use a time delay, check the Use Time Delay box and specify the number of seconds to delay between the time you hit <PrintScreen> and the time the capture occurs.

## How do I correct my mistakes? (i.e. Use Undo)

You may find that you cropped off some of the image that you really wanted, or that you applied some effects that you really did not want. The 'Undo' feature is very handy to correct these mistakes.

Just click the 'Edit'..'Undo' command, and your image will return to its previous state.

## Create a video of activity on my screen

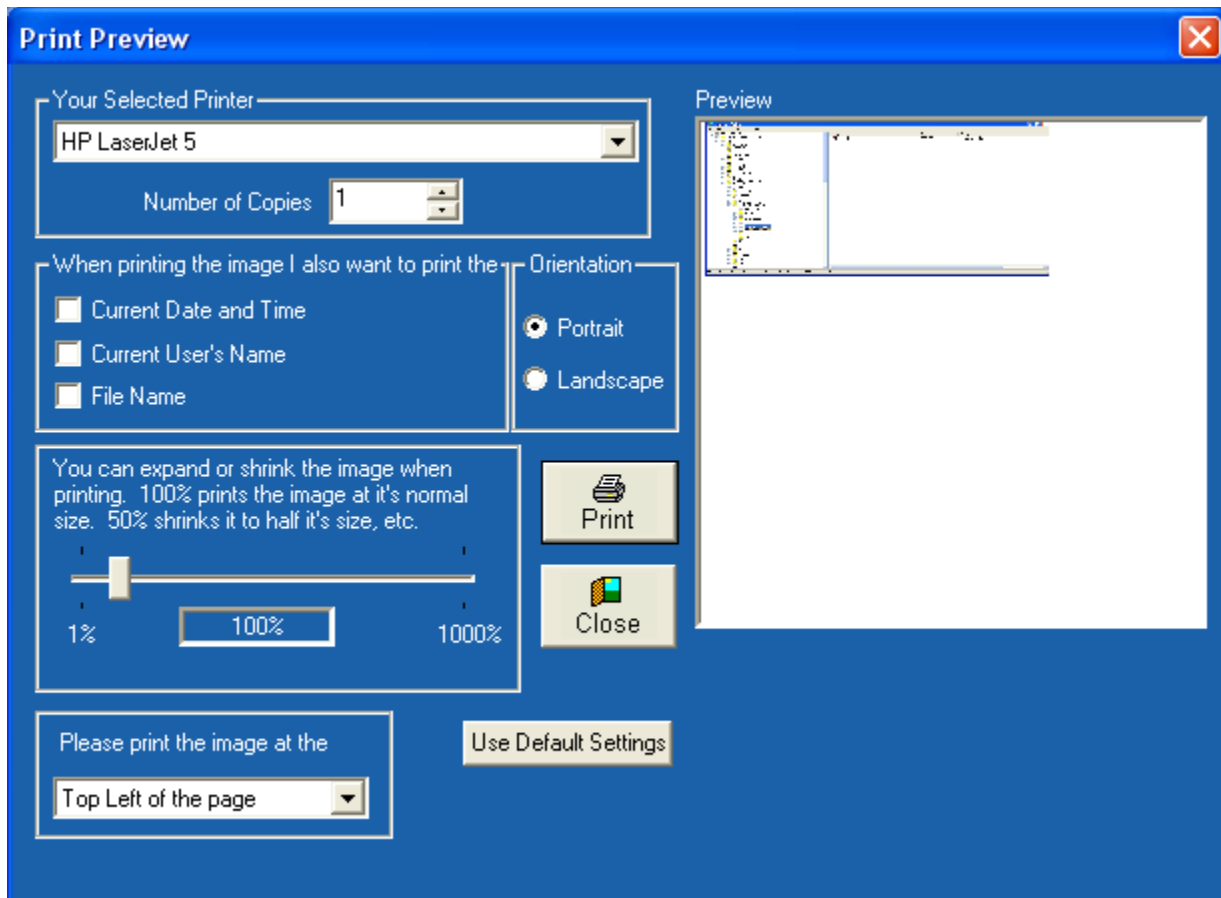
Q: "Why would I want to capture a "video" of my screen?"

A: Capturing a video of the activity on your screen can be useful for several things. You can use the video capture feature for creating tutorials for others to look at. You can, for example, demonstrate how to open a file. Family or friends new to computers can play back your capture and see exactly what you did. Print Screen Deluxe will capture every mouse movement, every click, and more. A useful tool and a picture is worth a thousand words!

Q: "How do I capture a video of my screen?"

A: To capture a video of the activity on your screen, do the following:

1. Click on "What am I capturing?" and make sure the box that says "Create a movie of events as they happen on my PC" is checked. Click "OK" to save your changes.



2. Press the <PrintScreen> button, or the custom hot key you configured, to start the capture.

3. While the capture is active you (if you have a microphone) you can talk and describe

what you are capturing. Or you can plug in music into the microphone port of your PC.

4. When you want to end the video capture, simply press the <PrintScreen> button again (or the hot key you configured).

5. You can now restore Print Screen Deluxe (if you don't have "Auto Popup" on) and play back your movie. You will be asked for a file name. Your video is saved as a .AVI file.

6. Your default Windows video player will launch and play what you just recorded.

## Come see us on the web!

At our web site you can :

- . Download the fully functional EZ Scheduler for FREE. No strings attached.
- . Download FREE evaluation versions of our software
- . Learn more about ALL of our products
- . Obtain technical support

Come see us at :

<http://www.americansys.com>

**Print Screen Deluxe 6.0 Order Form and Registration**

To **print this form**, click on the 'File' menu, then click on the 'Print Topic' option.

Name \_\_\_\_\_

Company \_\_\_\_\_

Address \_\_\_\_\_

City \_\_\_\_\_ State \_\_\_\_\_ Zip \_\_\_\_\_

Phone (\_\_\_\_\_) \_\_\_\_\_ - \_\_\_\_\_ Fax (\_\_\_\_\_) \_\_\_\_\_ - \_\_\_\_\_ e-mail \_\_\_\_\_

Important: Is this your first product from American Systems? ( )Yes ( )No

Number of Copies of Print Screen Deluxe: \_\_\_\_\_ x \$29.95 = \$ \_\_\_\_\_

(Texas residents add 8 1/4% sales tax.) Tax: \$ \_\_\_\_\_

Total: \$ \_\_\_\_\_

American Express ( ), Visa ( ) or MasterCard ( )

Number \_\_\_\_\_ Exp. Date \_\_\_\_\_

Signature: \_\_\_\_\_

Make checks and money orders payable to **American Systems**. *Purchase Orders are welcome.*  
**Bulk pricing is available!**

**Call us toll free at 1-888-892-4310**

Mail, or Fax your check or credit card details to :

American Systems  
P.O. Box 93747  
Southlake, TX 76092  
Care of Windows Utilities Division

Fax : (817) 485-2193

or Order Online at <http://www.americansys.com> and get the software right away!

Where did you get your evaluation copy from?

Name of source \_\_\_\_\_

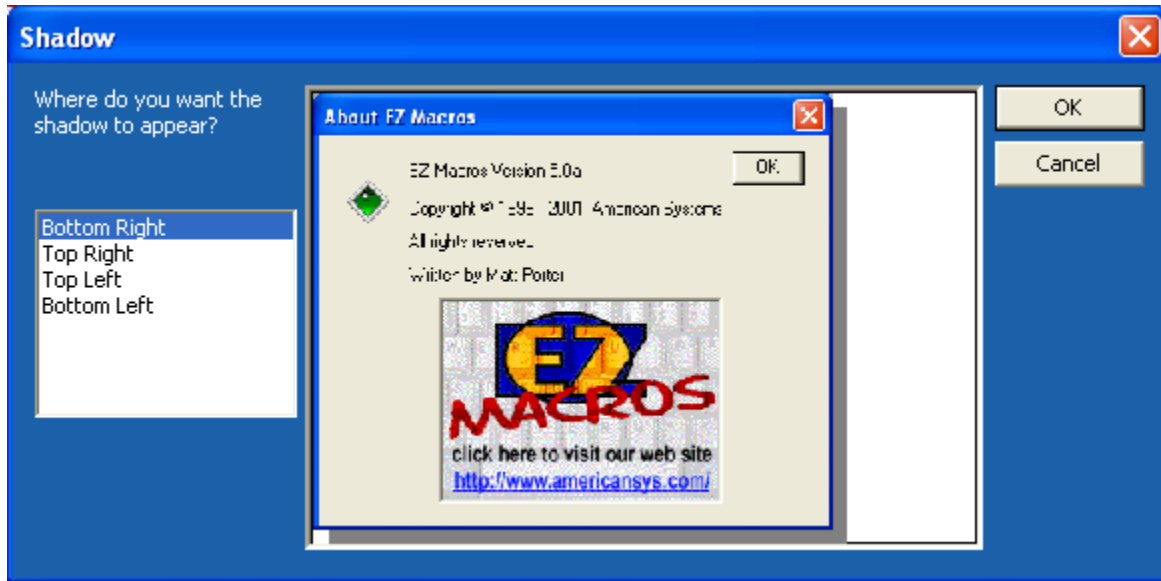
Note: Prices are effective November 1, 2005 and are subject to change. Please enclose any comments you have.



## Add a shadow to an image

To add a shadow to the image, click the image on the main Print Screen Deluxe window.

On the left, you will see a button called "Shadow". Click it. You will see this window with your image in the "Preview" box.

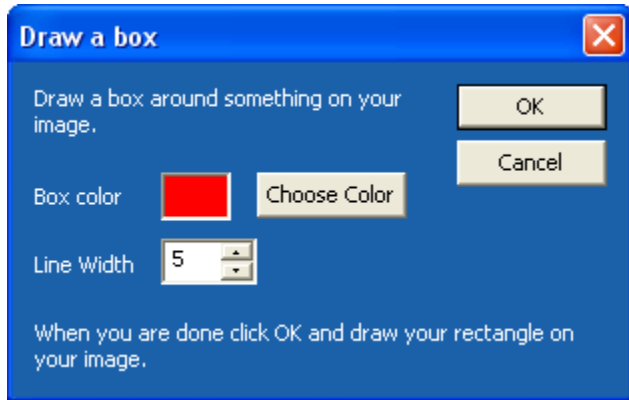


At the left, click where you want your shadow to appear. Then click <OK>.

## Draw a box on the image

To add a box to the image, click the image on the main Print Screen Deluxe window.

On the left, you will see a button called "Box". Click it. You will see this window appear.



Here you can choose what color you want your box to be, and how wide you want the line to be. Then click <OK> and draw a box on your image.

Here is what the "Before" and "After" image will look like with your screen under the box.

Before:



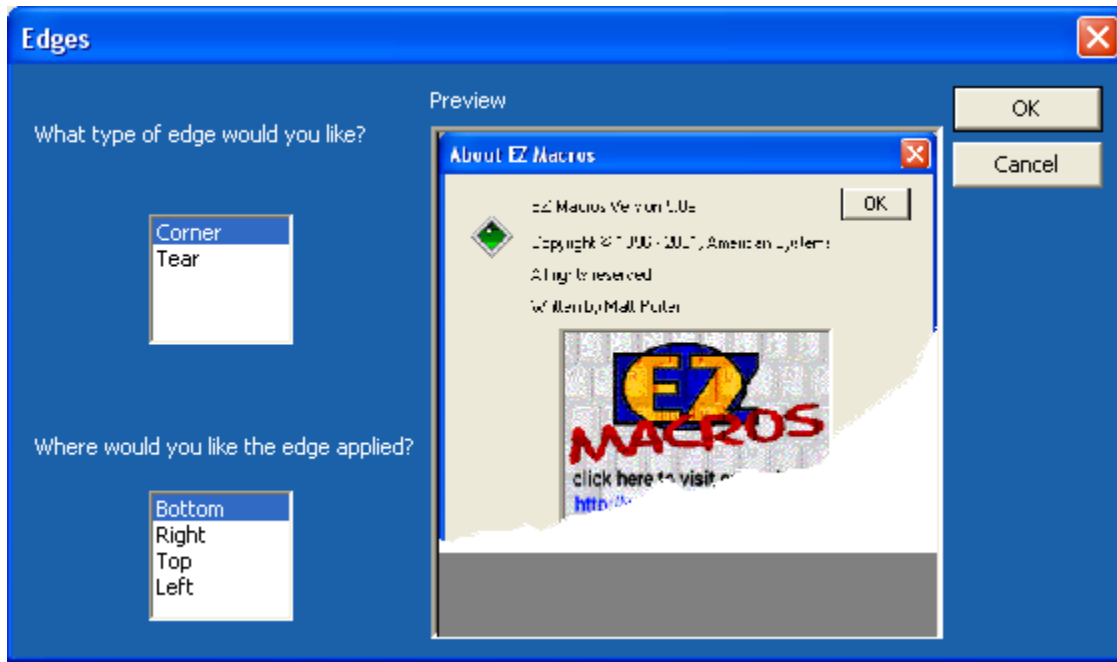
After:



## Tear off a corner or an edge of an image

To add a tear on the edge of your image, or to tear a corner off of your image, click the image on the main Print Screen Deluxe window.

On the left, you will see a button called "Corner". Click it. You will see this window appear.



Choose what type of edge you would like (corner or tear) and which side of the image to place the tear or corner on. Then click <OK> to save it.

## Capture the Text within a window

This is an extraordinary new feature of Print Screen Deluxe that is unmatched by anyone in the industry. Now you can click on any window (that is not a photo or image) and collect all of the text within it.

Have you ever seen a list or presentation and wished you could just copy and paste its content, but couldn't? If so then you will love this feature.

Here's how to do it.

1. On the main Print Screen Deluxe window click "What am I capturing?" to make sure "Text within a Window" is selected.

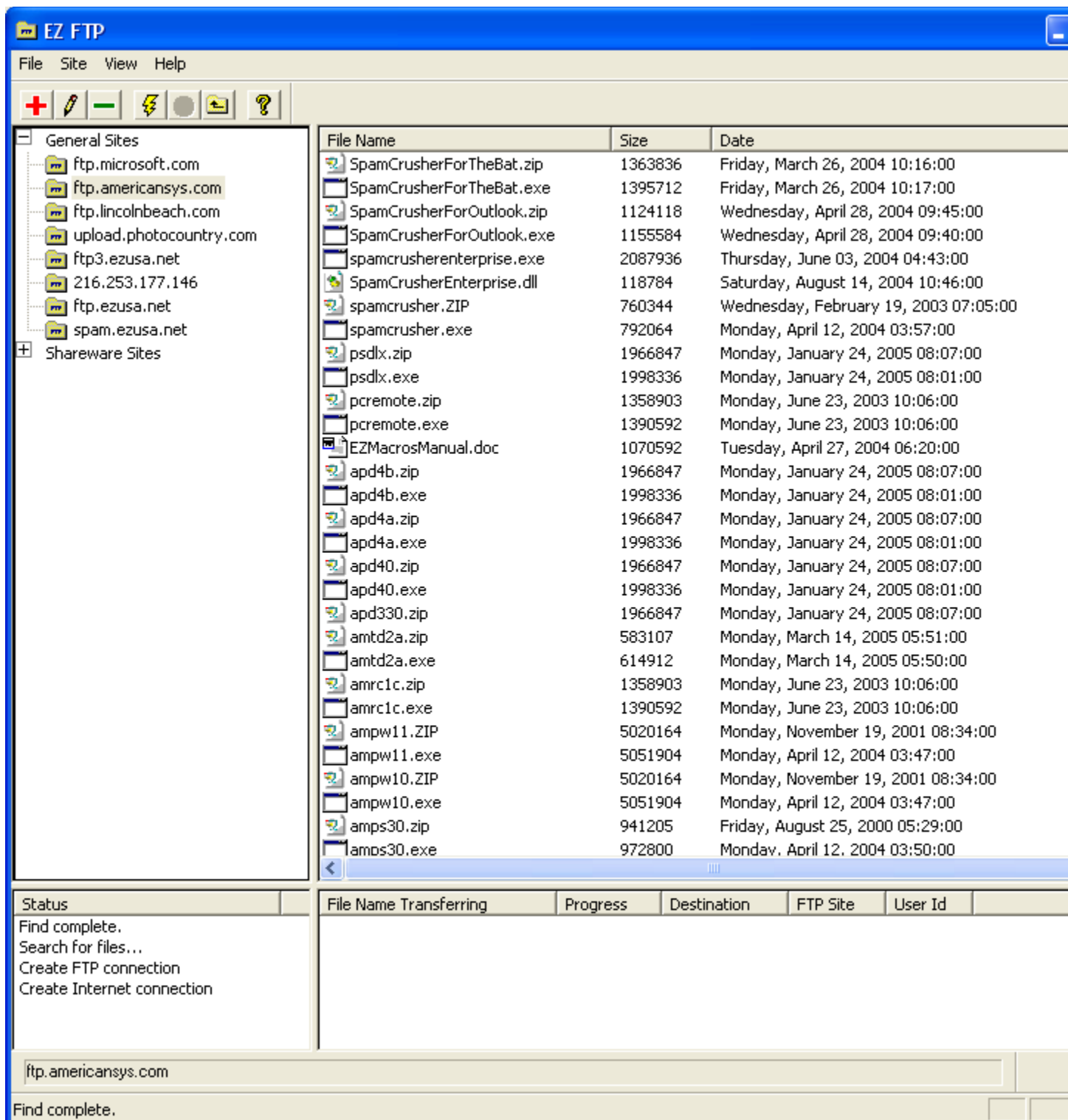
Click <OK>

2. Hit the <PrintScreen> hot key and move your mouse to the window you want to collect the text from.

3. Click it.

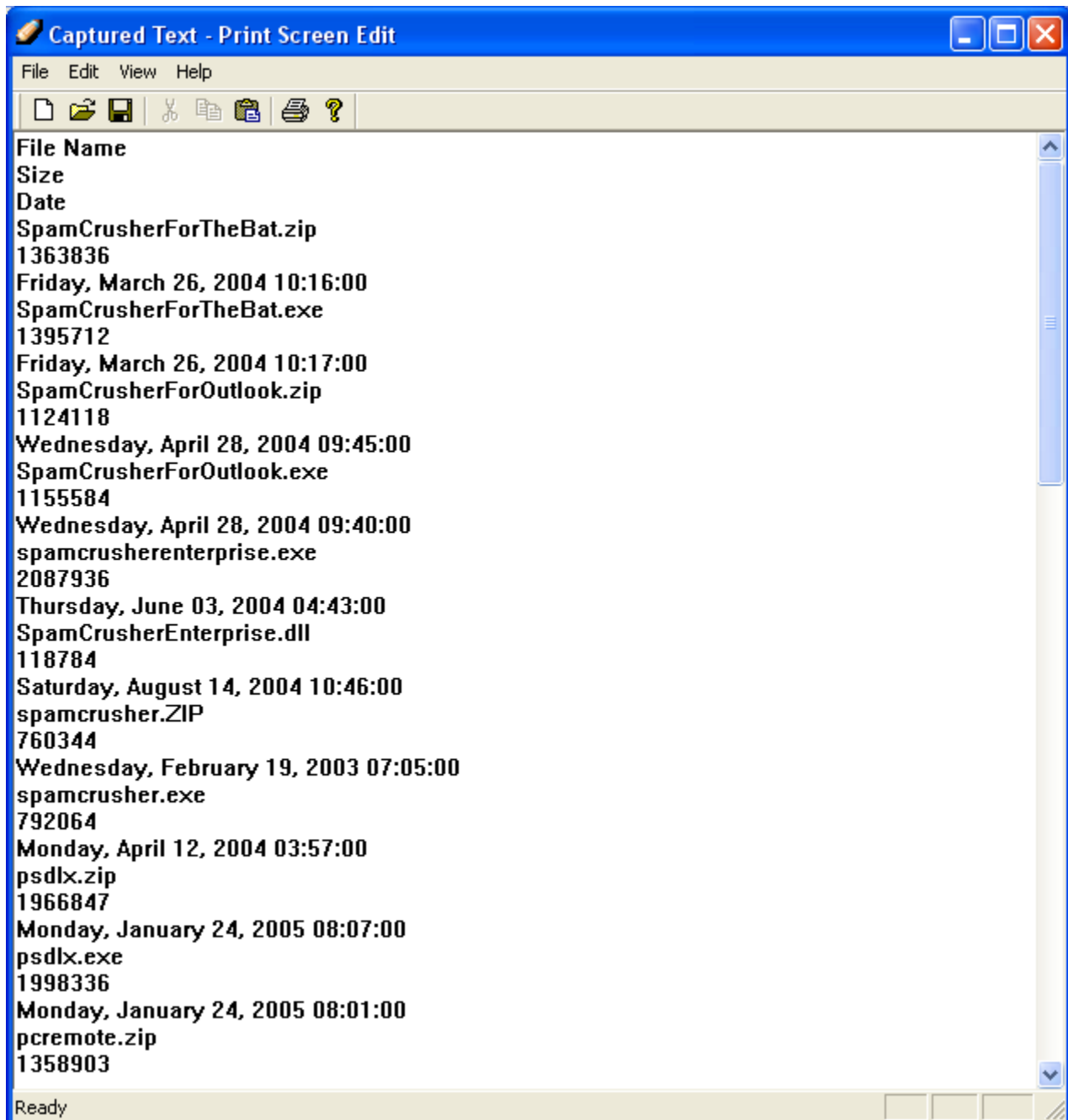
After that Print Screen Deluxe does all the work. You will see the Print Screen Editor appear. It will allow you to save it to a .TXT file that can be read by almost any Windows program. Notepad, Microsoft Word, Microsoft Excel, etc...

Here's an example. Let's say you have your FTP program up and you want to grab a list of all of the files on a site.



You would hit the <PrintScreen> key on your keyboard, and move your mouse to the file list window and click on it. You'll see a rectangle highlight the window.

Next the Print Screen Editor window will appear. This is a simple Notepad-like editor that allows you to cut, copy, paste, save, or print your text.



It's THAT easy!

