

# Print Screen

A product of American Systems

## **Contents**

Print Screen is the original and simplest screen printing and screen capture program. Print Screen can capture, save and/or print the contents of the entire screen to the printer when the 'Print Screen' key is pressed.

If it's on your screen, you can print it with Print Screen.

Copyright © 1994-2000, American Systems, All rights reserved.

[How to use Print Screen](#)

[Ordering Print Screen](#)

[Product Support](#)

## Product Support

American Systems provides user support to registered versions via mail, and/or telephone.

American Systems will answer questions and resolve serious bugs for the first three months after registration. For problems involving a specific hardware or software environment or feature, we may choose not to modify the program. In that case, if a problem is reported within three months after purchase, then we shall offer to refund the user's purchase price.

If a bug prevents you from evaluating Print Screen Deluxe during the first 30 days (prior to purchase), American Systems will attempt to assist but is not under obligation to resolve issues beyond our control.

Phone: (817)485-6547

Fax: (817)485-2193

Internet: support@americansys.com

Address: American Systems  
5424 Rufe Snow #320  
Fort Worth, TX, 76180  
Care of Technical Support

Please share the evaluation version of Print Screen Deluxe with others for the purpose of evaluation as long as it is unaltered and distributed in its entirety.

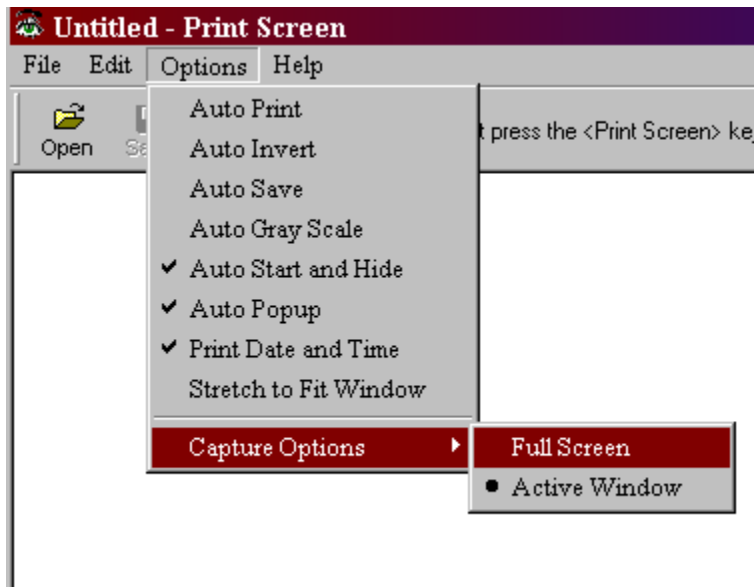
[How to Use Print Screen](#)  
[Ordering Print Screen](#)

## How do I Capture a screen?

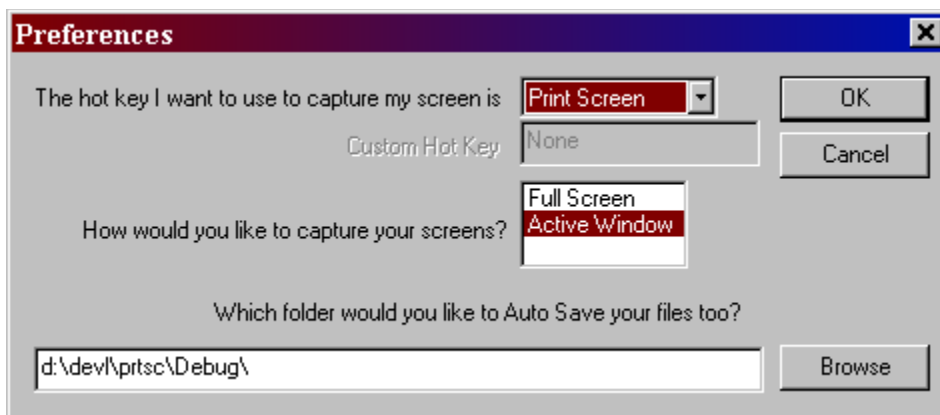
With Print Screen you can capture any of the following

- The entire screen
- The current active window

You can select capture options in 2 places. Either in the options menu (see below)



Or in the File..Preferences window (see below)



If you would like to **capture the entire screen** then do the following.

1. Make sure that you have the 'Options'..'Capture Options'..'Full Screen' option checked.
2. Capture the entire screen by hitting the screen capture hot key (default is **<PrintScreen>**).

3. A copy of the entire screen will appear in the Print Screen Deluxe window. You can then print, save, email or enhance it using the 'Special Effects' menu provided by Print Screen Deluxe.

If you would like to **capture the current active window** then do the following.

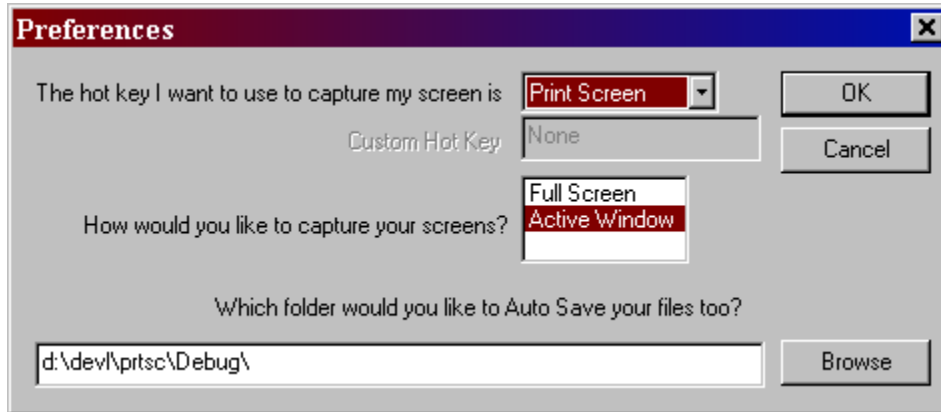
1. Make sure that you have the 'Options'..'Capture Options'..'Active Window' option checked.
2. Capture the entire window by hitting the screen capture hot key (default is **<PrintScreen>**).
3. A copy of the active window will appear in the Print Screen Deluxe window. You can then print, save, email or enhance it using the 'Special Effects' menu provided by Print Screen Deluxe.

## How do I automatically print my screen capture?

1. Make sure that you have the 'Options'..'Auto Print' option checked. If it is not, then click on it. If you look at it again it will be checked.
2. Now perform a screen capture by hitting the hot key (default is <PrintScreen>)
3. When the capture is complete, watch your printer. Your screen capture will print on your printer.

## How do I change the hot key that initiates the screen capture?

1. Click the 'File'..'Preferences' menu command. The window below will appear.



2. Look at the top. The default hot key is <PrintScreen>. If you do not want to use the <Print Screen> key, click the drop down menu and click Custom. Then go to the Custom Hot Key field and type the hot key you want to use.

## How do I run Print Screen automatically when Windows starts?

Make sure that the 'Options'..'Auto Start and Hide' option is checked. If not, click on it and a check will appear. The next time you start Windows, Print Screen will start with the icon in the system tray (clock window on the task bar).

## How do I open an existing image file to preview or print?

You can open a file in 1 of 2 ways.

1. Drag a bmp or jpg file onto the Print Screen window

or

2. Click the 'File'..'Open' menu command and use the window that appears to select the file you want. You can change the type of file you are looking for by clicking on the 'Files of Type' list.



## How do I email an image?

*Note: The Send Mail output option is only supported if you have a MAPI mail client installed (for example, Microsoft Exchange).*

Once you open an image file or capture an image, click on the 'File'..'Send' menu command. Your mail system create an email message containing your image and allow you to further edit your email. At that point you can send, file, or do whatever you wish with your email.

Please note that once you click on the 'File'..'Send' command your email system takes over. Print Screen Deluxe has no control over what happens in your email system.

## How do I automatically save my screen capture to a file?

Make sure you have the 'Options'..'Auto Save' option checked.

This automatically saves the screen print to a .JPG file when the screen capture hot key (default is **<PrintScreen>**) is pressed.

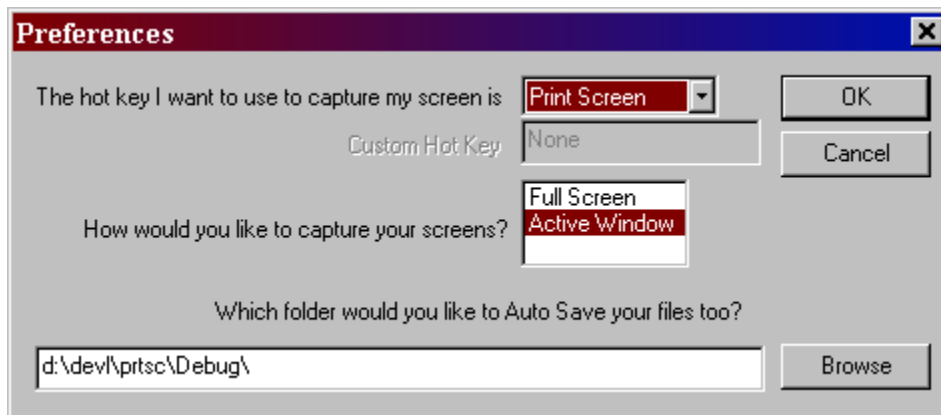
The program can either

a)Generate a file name like PS000010.JPG. The first file name generated is PS000000.JPG. The file name of each screen print that you want automatically saved after that will be incremented by one, for example, PS000001.JPG, then PS000002.JPG...

or

b)prompt you for a filename.

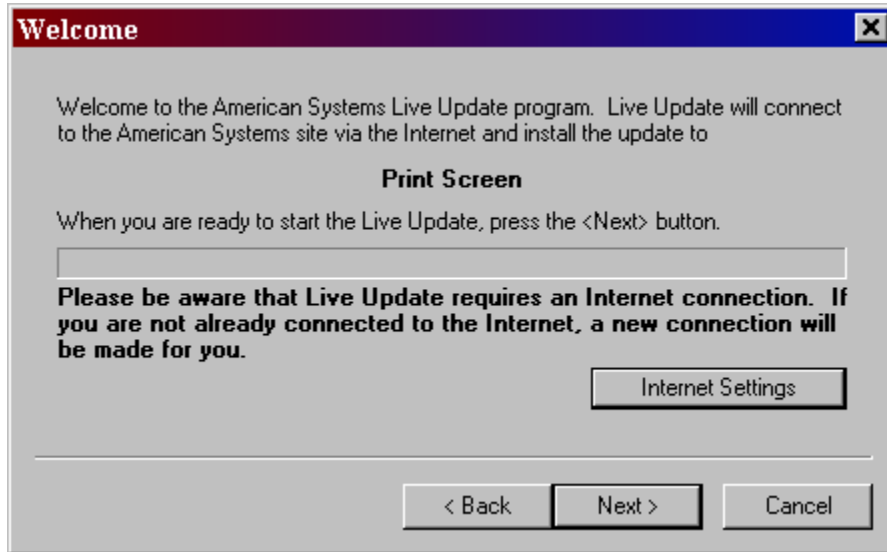
You can set this option in the File..Preferences window. See below.



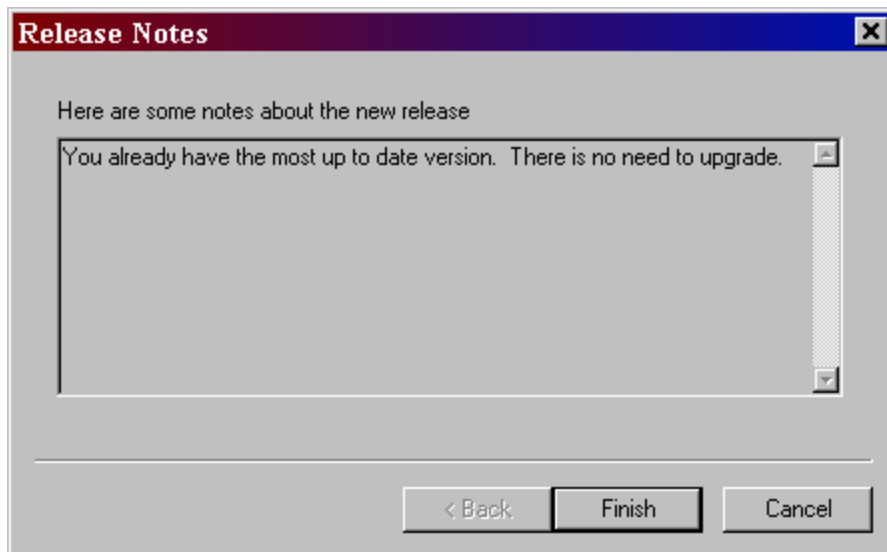
This feature is very handy if you are documenting a program or system. You can move through the program you are documenting, screen by screen, pressing the screen capture hot key (default is **<PrintScreen>**), saving them to files.

## How do I get the latest version of Print Screen?

Print Screen Deluxe has a really neat feature built in called "Live Update".



Live Update will connect to the American Systems web site using your Internet connection and retrieve the latest upgrade and install it for you. If you have the latest version you will see a message similar to the following.



Otherwise you will see a screen with the features the new upgrade adds. Just follow the instructions on the screen and install the new version.

## Come see us on the web!

At our web site you can :

- . Download the fully functional photo product Photo Wizard FREE. No strings attached.
- . Download the fully functional EZ Scheduler for FREE. No strings attached.
- . Download FREE evaluation versions of our software
- . Learn more about ALL of our products
- . Obtain technical support

Come see us at :

<http://www.americansys.com>

## Print the Current Date/Time on the printout

If you would like the current date and time to print at the top of your printouts just check the Options..Print Date and Time command.

# How to use Print Screen

Print Screen is the original and simplest screen printing and screen capture program. Print Screen can capture, save and/or print the contents of the entire screen to the printer when the 'Print Screen' key is pressed.

If it's on your screen, you can print it with Print Screen.

Copyright © 1994-2000, American Systems, All rights reserved.

## How do I...

[Capture a screen or window?](#)

[Automatically print my screen capture?](#)

[Change the hot key that initiates the screen capture?](#)

[Run Print Screen automatically when Windows starts?](#)

[Open an existing image file to preview or print?](#)

[Email an image?](#)

[Automatically save my screen capture to a file?](#)

[Print the Current Date/Time on the printout?](#)

[Get the latest version of Print Screen?](#)

[Come see us on the web!](#)

[Ordering Print Screen Deluxe](#)

[Product Support](#)

## Print Screen 3.0 Order Form and Registration

To **print this form**, click on the 'File' menu, then click on the 'Print Topic' option.

Name \_\_\_\_\_

Company \_\_\_\_\_

Address \_\_\_\_\_

City \_\_\_\_\_ State \_\_\_\_\_ Zip \_\_\_\_\_

Phone (\_\_\_\_) \_\_\_\_-\_\_\_\_ Fax (\_\_\_\_) \_\_\_\_-\_\_\_\_ e-mail \_\_\_\_\_

**Important:** Is this your first product from American Systems? ( )Yes ( )No

\_\_\_\_\_ Number of Copies of Print Screen

x \$19.95 = \$ \_\_\_\_\_ (TEXAS residents add 8 1/4% sales tax.)

American Express ( ), Visa ( ) or MasterCard ( ) Number \_\_\_\_\_

Exp. Date \_\_\_\_\_

Signature: \_\_\_\_\_

Make checks and money orders payable to **American Systems.**

P.O.s for more than \$100.00 are welcome!

Bulk pricing is available!

**Call us toll free at 1-888-892-4310**

Mail, or Fax your check or credit card details to :

American Systems  
5424 Rufe Snow #320  
Fort Worth, TX 76180  
Care of Windows Utilities Division  
Fax:(817)485-2193

or **Order Online** at <http://www.americansys.com> and get the software right away!

Where did you get your evaluation copy from?

( ) Internet

( ) Vendor

( ) BBS

( ) CD-ROM

( ) Friend

( ) Other

Name of source \_\_\_\_\_

Note: Prices are effective August 17, 2000 and are subject to change. **Please enclose any comments you have.**

