



Welcome

Internet EZ Search can employ over ONE HUNDRED different search engines to find sites on the Internet's World Wide Web, using keywords that you only have to enter only once. It's easy to get a consolidated list, ranked in importance without any bothersome duplication.

It's easy to get to know Internet EZ Search and do your first web search.

You may view the [Main Window Overview](#), and click on any area to learn more about it, follow the easy to follow [Step by Step Search Example](#), and read this help file like a manual, by using the browse buttons above.

If you ever have a question about how Internet EZ Search or any of its dialogs work, click on the Help | Contents menu item and use the Contents and Index entries to quickly find your answer.

Internet EZ Search offers a wide range of features that makes your Internet searches quicker and more convenient:

- Query dozens of search engines simultaneously instead of doing slow and tedious single engine searches one at a time.
- Internet EZ Search uses multi-threaded searches, sending your search criteria and gathering results from many search engines simultaneously, making the process quicker and more efficient. Sit back and relax while Internet EZ Search does the work.
- Results are consolidated and de-duplicated, so sites are only shown once.
- You can view results from within Internet EZ Search, without opening a separate browser window.
- Previous searches are saved and can be quickly recalled or repeated for updates.
- You can use Microsoft Internet Explorer right mouse menus, so site addresses can be saved as shortcuts, copied, or opened in a new browser window.
- Search your computer and even network hard drives for files with specific text in them using the [Search My PC](#) icon.
- Internet EZ Search uses the familiar Microsoft Internet Explorer toolbar for quick and easy navigation.
- Search Categories can be easily modified by adding other search engines from Internet EZ Search library of over one hundred sites or deleting any undesired engines.

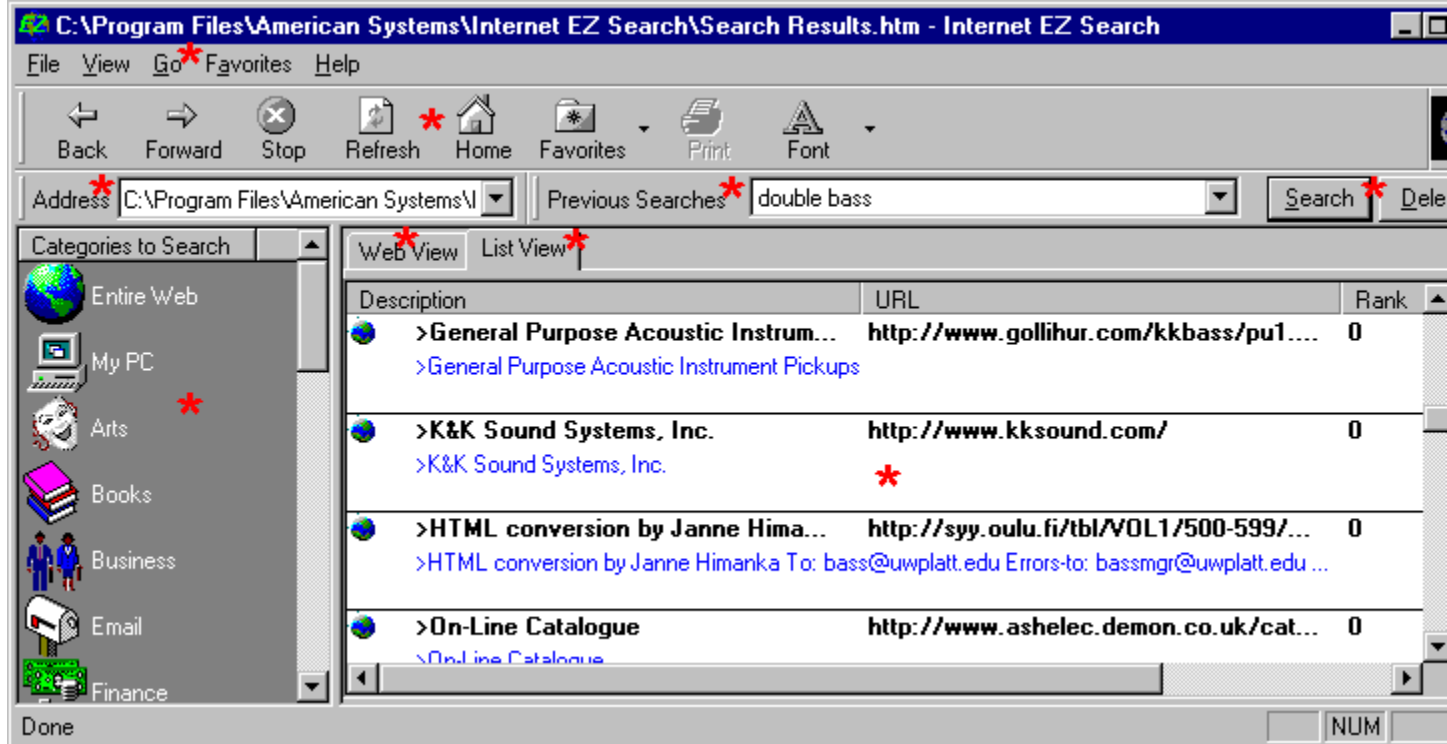
System Requirements

Internet EZ Explorer will perform best if you have Microsoft Internet Explorer version 4.0 or greater installed. However, the system can still be installed and used if another browser or earlier version of MSIE is present. Please refer to the [Helpful Hints](#) topic, item 3, for details.



Main Window Overview (LIST VIEW)

Click on any red asterisk * to view a pop-up window that describes that area.



Note: If Internet EZ Search does not look like this when you first run it, please review item number 3 under [Helpful Hints](#).

Menu

Click to access many familiar Microsoft Internet Explorer menu items, or access program configuration Preferences under the File menu for Communications and Color choices.

Toolbar

The very familiar toolbar is the same as Microsoft Internet Explorer, available and ready for you to navigate the Internet. Internet EZ Search has a built-in browser window, so you don't have to open a separate window to review your results.

Address

The Web View's current address is shown here. You can also click on the arrow to reload previously loaded addresses or open local files from the File | Open menu item.

Previous Searches

Your prior searches completed with Internet EZ Search are kept, so you can review their content and visit the web pages you found earlier. Click on the down arrow and choose from the listing shown to reopen them in the Web or List View.

Search and Delete buttons

Internet EZ Search keeps track of previous searches. Click on the Search button to start another search with the search words showing in the Previous Searches box, using the Category that is currently highlighted.

The Delete button erases the search currently shown in the Previous Searches box.

List View

This view displays a consolidated list of all the sites found, in order by rank. When you double-click on any selection, Internet EZ Search reverts to the Web View and displays the page within its own window, without having to open up your browser.

It's a very convenient way to browse your results without opening up a browser as well as retaining the list of sites Internet EZ Search has found for you.

Categories to Search

Internet EZ Search has organized its many search engines into different categories. Click on any selection to begin a search using the engines in that category.

You can see which categories are assigned to any selection by right clicking on it and choosing Properties, and even customize the list to your preference.

The **My PC** entry lets you search your computer for text inside a file!

List View Window Headings

After your search is complete, Internet EZ Search eliminates duplications and shows the site Description, its address (URL), displays them in Ranking by importance order, number of Hits, and the search Engine employed.

List View window

Clicking on any highlighted selection opens the Web View and displays the desired web page in the Internet EZ Search window. You can click back and forth between your findings in the List View and the Web View, where the actual web page can be shown.

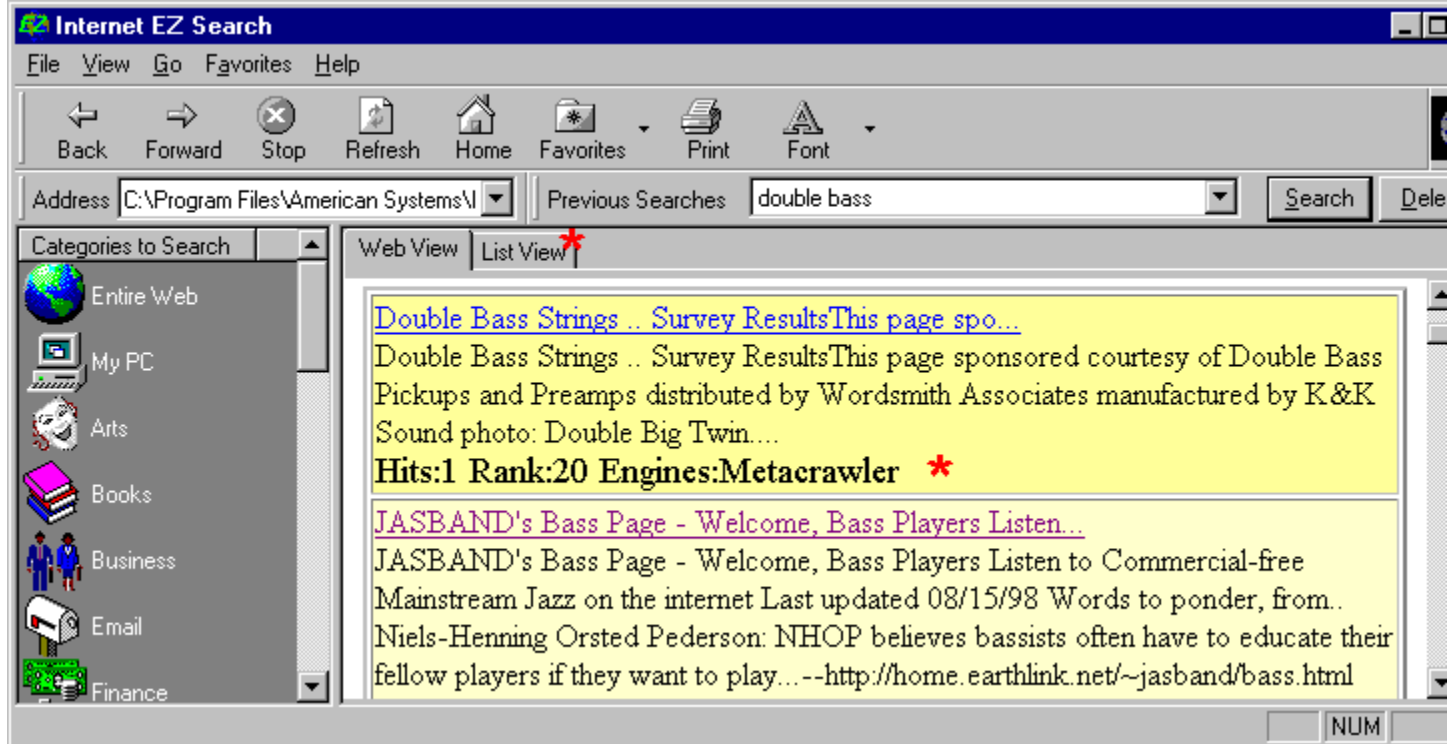
Web View window

When you complete a search, this attractive format displays your findings. Click on any web site listed and it will be displayed in this view. You can also use right mouse clicks to access Microsoft Internet Explorer menus, to open the web page in a new window, copy the URL, and much more.



Main Window Overview (WEB VIEW)

Click on any red asterisk * or [return to the List View](#) of the Main Window.





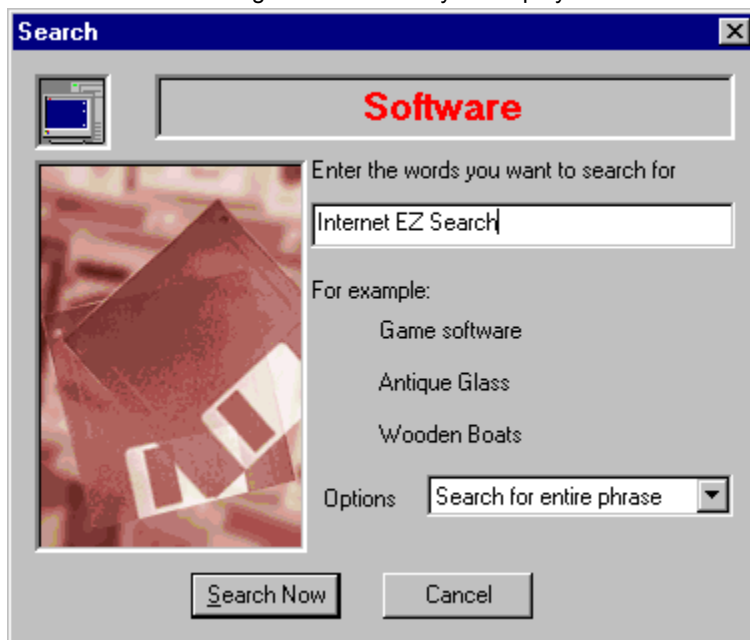
Step by Step Search Example

Internet EZ Search is very intuitive and easy to use. Here is an example search for you to try. You may click this {button Print,Print()} button if you would like a single page hard copy of the instructions to follow.

1. Let's say that a friend told you about a new program they found and liked, but all you could remember is its name: Internet EZ Search
2. Scroll down the *Categories to Search* on the left side of the window -- let's choose *Software*, which seems to be a likely category to search, and click on it.



3. The Search dialog will automatically be displayed



4. Enter "Internet EZ Search" in the box, and leave the Options box set to *Search for entire phrase* as shown in the illustration. Then, click the *Search Now* button. If you are not already on the Internet, Internet EZ Search will prompt you to get connected.
5. Wait while the *Search Status window* shows the engines being used and continual status updates. The window will disappear when the process is complete.
6. You now have a ranked listing of all sites found in the List View. Double-click on the American Systems selection and watch as Internet EZ Search switches to the Web View and displays the site in its window.



Menu

File Menu

Open - You may open a local .htm or .html file into the Web View using this familiar dialog.

Preferences - This selection accesses the [Preferences tabbed dialog](#), where you can change the List View colors and choose connection preferences, including proxy information.

Exit - Close Internet EZ Search

View Menu

✓ **Toolbar** - Toggle the check mark on and off to display or hide the toolbar.



Status Bar - Toggle the check mark on and off to display or hide the status bar at the bottom of the window.

Stop - Discontinue attempting to load the web site you are waiting for; this menu item is duplicated in the Toolbar.

Refresh - Reload the web page currently displayed in the Web View; this menu item is duplicated in the Toolbar.

Fonts ▶ - You can access your choice of five different default font sizes; click any to reduce or enlarge the fonts used to display pages in the Web View.

Go

Back, **Forward**, and **Stop Page** each duplicate navigation items in the Toolbar.

Favorites

Click to access your Microsoft Internet Explorer favorites; this menu item is duplicated in the Toolbar when you click on the arrow adjacent to the Favorites icon.

Help

Contents - This entry provides access to the help file you are currently using.

Live Update - You can automatically connect to the American Systems' web site and update your version of Internet EZ Search through the [Live Update](#) menu selection.

Visit American Systems on the web - Use the Web View to connect and display the American Systems' web site.

About Internet EZ Search - Version and other information about Internet EZ Search.



Toolbar

The Internet EZ Search toolbar should seem familiar, since it uses that same icons that you will find in Microsoft Internet Explorer.

Main Toolbar Icons

The Web View of Internet EZ Search can act just like an independent web browser, and you can use the **Back** and **Forward** arrow icons to navigate, the **Stop** button to halt the page-loading process, and **Refresh** to reload a web page.

Home will load the local American Systems splash screen, while the **Arrow** next to the **Favorites** icon opens your Microsoft Internet Explorer bookmark file (the Favorites Icon itself is non-functional).

The **Print** icon opens the print dialog, and Font lets you select from five different sizes of default display fonts.

Address

This field shows the current Web View address; clicking on the down arrow at the end shows prior addresses and allows you to choose from the list to reload the file.

Previous Searches

Internet EZ Search retains your prior searches. Click on the down arrow to view and choose to display any prior search.

Search button

Click to repeat the search using the criteria currently being displayed in the Previous Searches box, using the currently highlighted category.

Delete button

Clicking on this button will delete the search file currently shown in the Previous Searches box.



Search (DIALOG)

This dialog appears when you click on any Category or the Search button.

Enter the words you want to search for - Type in the word(s) or expressions for the various engines to use as search criteria. The manner in which they are used is defined by your choice from the drop down Options menu, which is explained below.

Options

Search for all the words - This selection only gathers pages that include ALL of the words in your search criteria as specified above.

Search for any of the words - Any page that includes any individual word in your search criteria will be selected. Depending on the words included, this could generate a high number of pages.

Search for entire phrase - Only pages with exact matches for the phrase you have entered should be returned when this selection is chosen.

Search using expression - Some search engines allow the use of expressions, which let you use a specific syntax, or arrangement of words, to more precisely define your search. Rules for these expressions can be found on individual web pages.



Preferences (DIALOG)

This dialog is accessed from the File Menu | Preferences.

Program

List View Colors - Click on the buttons labeled **Web Site Title Color**, **Viewed Web Site Color**, **Long Description**, and **Background Color**, to change the color scheme of the corresponding part of the List View. A sample screen view is shown and is affected by your changes, so you can preview the appearance of the List View with your changes.

Display the Web Viewer when a search completes - Check off this box to change the default screen to the Web View.

Use Original Settings - Click on this button to reset the List View to its original color scheme.

Communication

Use preconfigured settings - This selection will use your current Windows settings, is generally the default, and is the appropriate choice for most users.



Direct connection to the Internet - If you use a modem to connect to the Internet, you may wish to use this setting.



Connect through a proxy server - If you are on a network, you may require these settings; contact your network administrator for this information and enter it in the spaces provided:

IP Address of proxy to use



:

Port



Category Properties (DIALOG)

You can access Category Properties by right clicking on any entry in the *Categories to Search* window and clicking on *Properties*. This dialog lists all the search engines that are used when you select the category shown at the top of the dialog for your search. You may modify this list of search engines by using the Add or Delete buttons, so it meets your preferences precisely.

Add - A complete list of all the available search engines is shown when you click this button. To add any search engine, simply click to highlight it and click OK.

Delete - Highlight any listed search engine and click Delete to remove it from this category.



Search Status (DIALOG)

This dialog appears after you execute a search; it interactively displays the activities and status of the Internet EZ Search in progress. It lists the Search Engine, Percentage (%) Complete, and the Status, such as its inquiry state, reading data, translating it, etc.

Stop - If you want to abort a search in progress, click the stop button.

If you click it before any results are displayed, the search is completely aborted. However, if some listings are already showing and the search is stopped, the results to that point will remain in both the Web and List Views. This can be useful if one of the search engines is sluggish in responding.



Search My PC

This feature enables you to scan most files on your computer and network, if desired, for a text phrase or word you specify. Just click on the *My PC* entry near the top of the *Categories to Search*.

Enter the phrase you want to search for - Type in a word or phrase.



I want to search all the drives on my PC and network.

This option includes all accessible drives, but will only scan root folders unless *the Scan all folders on my PC and network* option is checked off.



I want to specify the folders to search.

When checked, this option enables the Add and Delete buttons. Clicking on Add displays a familiar dialog where you may navigate and choose folders to add in the display box. If you highlight any selection and click the Delete button, it will be removed from the list. View the next option, which indicates if subfolders should be included in your search.



Scan all subfolders on my PC and network or Scan all subfolders in the folders listed.

This caption for this option will change depending on which choice is made between the two options above. They will scan the root or designated folders only; by checking this option, all subfolders within the selection made above will also be scanned.



Live Update

The Live Update function uses your Internet connection to contact the American Systems web site and automatically upgrade your software to the most current release. We suggest that you check with us frequently by using this Live Update feature, as we continue to improve Internet EZ Search and update and add search engines. Simply follow the wizard-style dialogs to update your version of Internet EZ Search. If you are not already online, the system will prompt you to connect.



Internet EZ Search 3.0 Order Form and Registration

{button Click to Print this form,Print()}

Name _____

Company _____

Address _____

City _____ State _____ Zip _____

Phone (____) _____ - _____ Fax (____) _____ - _____ e-mail _____

Important: Is this your first product from American Systems? Yes No

_____ Number of Copies of Internet EZ Search

x \$29.95 = \$ _____ (TEXAS residents add 8 1/4% sales tax.)

American Express Visa MasterCard

Number _____ Exp. Date _____

Signature: _____

Make checks and money orders payable to American Systems.

Purchase Orders for more than \$100.00 are welcome; bulk pricing is available.

Call us toll free at 1-888-892-4310

Mail, or Fax your check or credit card details to :

American Systems
5424 Rufe Snow #320
Fort Worth, TX 76180
Care of Windows Utilities Division
Fax:(817)485-2193

or Order Online at <http://www.americansys.com> and get the software right away!

Where did you get your evaluation copy?

Vendor Internet CD-ROM Friend Other

Name of source _____

Note: Prices are effective December 1, 1998 and are subject to change. Comments are welcome.



Helpful Hints

1. If you are having trouble connecting to the Internet with Internet EZ Search, you may need to alter the File Menu | Preferences | Communications settings. The default setting is *Use preconfigured settings*. Sometimes the default Windows settings are not correct.

If you are using a modem to connect to get to the Internet try 'Direct Connection to the Internet'.

If you are using a network connection to get to the Internet, try 'Direct Connection to the Internet'. If that fails, you are very likely connecting to the Internet through a "proxy" server. Check the settings you use in your Web browser and see what your proxy settings are. Make the Internet EZ Search settings match that of your web browser. If you are still having trouble, contact your network administrator to verify your proxy settings.

2. If you are having trouble launching your browser by double clicking on a row, then it is very likely that your web browser is not properly set up as your default web browser. This can be tricky, so please proceed carefully.

First start Explorer. Then click on View | Options, then click the File Types tab.

In the Registered File Types list, scroll down to *URL:HyperText Transfer Protocol*. Click *Edit*.

The Actions list with either be blank or have an item called "open". If the "open" item is listed proceed to A). If not proceed to B).

A) In the Application used to perform action field, you will need to supply the path to your web browser.

You can use the *Browse* button to navigate your hard drive to locate your web browser program. It could be something like *C:\Program Files\Internet Explorer\explore.exe* for Microsoft's Internet Explorer 3.x or it could be *C:\Program Files\Netscape\Navigator\Program\netscape.exe* for Netscape Communicator 4.x.

Then click *Ok*. Then click *Ok* again.

Internet EZ Search should now be able to work with your web browser.

B) In the Action field type the word *open*.

Then, in the *Application used to perform action* field, you will need to supply the path to your web browser.

You can use the *Browse* button to navigate your hard drive to locate your web browser program. It could be something like *C:\Program Files\Internet Explorer\explore.exe* for Microsoft's Internet Explorer 3.x or it could be *C:\Program Files\Netscape\Navigator\Program\netscape.exe* for Netscape Communicator 4.x.

Then click *Ok*. Then click *Ok* again.

Internet EZ Search should now be able to work with your web browser.

3. If you do not have Microsoft Internet Explorer 4.0 installed, certain features and functions documented in this help file will not be available to you. However, Internet EZ Search can still perform its primary duties of offering convenient, multi-engine Internet searches. The following items are affected:

The Web View is not available, but the List View remains and performs as documented.

The Address bar and Tool bar are not included in the main window.

The Favorites, Go, View | Stop, View | Refresh, and View | Fonts menus are omitted.

Internet EZ Search will retain its value as a strong search tool, and your default browser will be called to display pages when you click on them in the List View.



Support

Please consult the Index of this Help file and the [Helpful Hints topic](#) prior to requesting Technical Support. We have made every effort to include as much support data as possible.

In the event that Product Support is necessary, American Systems provides user support to registered versions via mail, and/or telephone.

American Systems will answer questions and resolve serious bugs for the first three months after registration. For problems involving a specific hardware or software environment or feature, we may choose not to modify the program. In that case, if a problem is reported within three months after purchase, then we shall offer to refund the user's purchase price.

If a bug prevents you from evaluating Internet EZ Search during the first 30 days (prior to purchase), American Systems will attempt to assist but is not under obligation to resolve issues beyond our control.

Phone: (817) 485-6547
Fax: (817) 485-2193
EMail: support@americansys.com
Web Site: <http://www.americansys.com>
Address: American Systems
5424 Rufe Snow #320
Fort Worth, TX, 76180
c/o Windows Utilities Division

Please share the evaluation version of Internet EZ Search with others for the purpose of evaluation; it must remain in unaltered and be distributed in its entirety.

