

Web 2.0

Monitoring and assessing work placement

Ali Marie Ladwa & Theresa Beattie
JISC Regional Support Centre YH

JISC RSC YH

- Who we are?
- What we do?
 - Today
 - Web 2.0
 - Context - Student Placement
 - Activity

Web 2.0

- What does it mean?
 - Blogs
 - Wikis
 - Podcasts
 - Etc.

No technology generation

- Myspace
- Bebo
- Facebook
- MSN
- Google
- Youtube
- Ipod
- Laptop
- Xbox
- Wii
- PSP
- Mobile Phone

Technology Generation

- Sat Nav
- Email
- Memory Sticks
- Powerpoint
- Excel
- Word
- Access
- Internet Explorer
- Sky Satellite
- TV
- CDs
- DVDs
- Digital Cameras
- Blogs
- Mobile Phones

Skills & Knowledge?

- So what skills & knowledge do your students have?

They ...

- Download music (Limewire, Bearshare, Kazaa)
- Create Music (see Myspace)
- Upload music (itunes, Limewire, Kazaa, Bearshare)
- Download video
- Create videos
- Upload video (Youtube)
- Create personal spaces (with profiles, interests, comments on others)
- Share: photos, music, videos, thoughts, Life
- Network (intimate details)

Students already

Collaborate
Communicate
Network
Reflect

Student Blogs

- o <http://parkinsonliam.blogspot.com/2007/11/second-life-galleries.html>
- o <http://fionnualamurphy.blogspot.com/2007/11/new-shiny-work-area.html>
- o <http://marksrit.blogspot.com/2007/10/second-life.html>
- o <http://myworldmylifemytime.blogspot.com/2007/10/second-life.html>
- o <http://rockbigdave.blogspot.com/2007/09/second-life-at-uni-we-work-d.html>
- o <http://digitalbreak.blogspot.com/2007/10/second-life.html>



liam parkinson's hub

565

MY LEEDS COLLEGE OF ART & DESIGN DIGITAL MEDIA BLOG

saturday, november 10, 2007

Second Life Galleries

Well i decided to have a look at some galleries within second life and took a really good look around the Odyssey build we were shown during the briefing.

I first looked at Chris's gallery on the college island though because it slightly steps away from a traditional building and has a large open space in which to view work.



about me



Liam Parkinson
My name is Liam and I am currently studying at the Leeds College of Art and Design, Previously I have just finished a ND Graphic Design course and am now studying a FD In Design for Digital Media.

[View my complete profile](#)



Join me at:
LCADgallery

blog archive

- ▼ 2007 (45)
 - ▼ December (2)
 - I think I love this site... PACMAN TREE!!!
 - ▶ November (10)
 - ▶ October (10)
 - ▶ September (7)

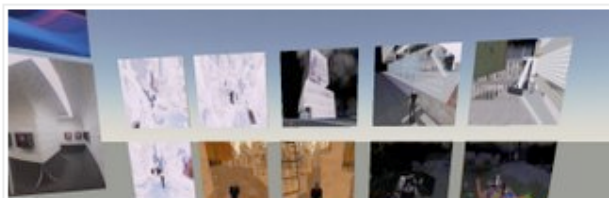
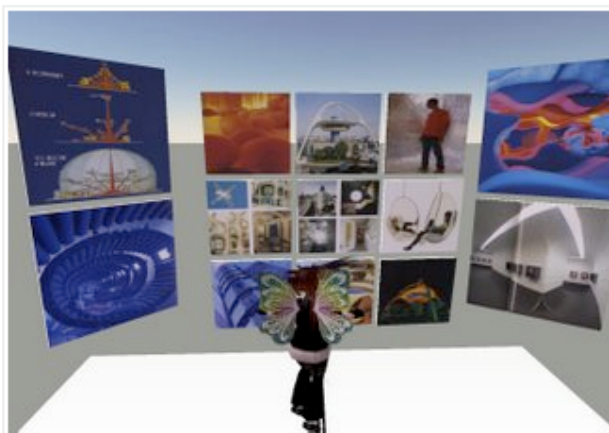
screenager



15.11.07

new shiny work area

for me and liam to develop our ideas and try things out and stuff.



here i'm allowed everything all of the time

About Me



Name: fionnuala murphy
Location: Leeds, YORKSHIIIIIIIRE!!!!, United Kingdom

I'm a twenty-one year old lady girl studying design for digital media at leeds college of art

and design and faff. I'm now a year two, so now I have to make grown up decisions about my life and career and stuff. although I really enjoy a pretty animation and swooshy motion graphics, my real obsession is interactive stuff and web design. I like the web design. I also like critical studies (don't tell anyone) although my brain often hurts and refuses to function. I like to know about the why as well as the how. my current mission is to get a balance between the digital and non-digital in my life and work and see johnny hardstaff do a lecture live, although I'll just be sitting in my seat comatose. I like art and books. and my imac, sherbert.

[View my complete profile](#)

Previous Posts

- [I want one!!!](#)
- [interactive design rationale](#)
- [evaluation of ident.](#)
- [fonts and that](#)
- [website-ness.](#)

Social Networking

- <http://myrscyspace.ning.com>
- <http://mybioplacement.ning.com>

Activity

- Set up a ning or pbwiki
- Set up your site as a tutor.
- Decide your assessment criteria and make that clear on the site.
- How many blog entries required per week/month?
- How many discussions?
- Set topics each week?
- What sort of feedback will you give & how (text, audio, video)

Wikis

- <http://bioscience.pbwiki.com/FrontPage>

Contact

- www.rsc-yh.ac.uk
- 0113 3431004