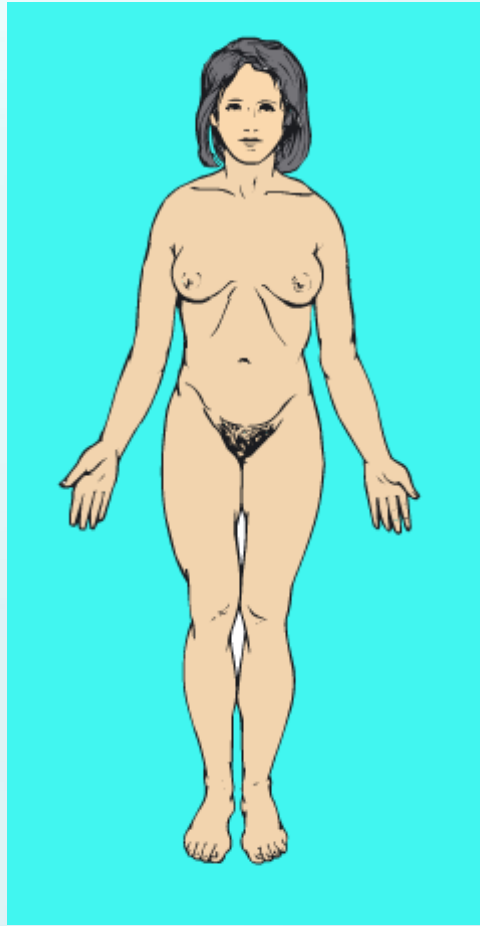
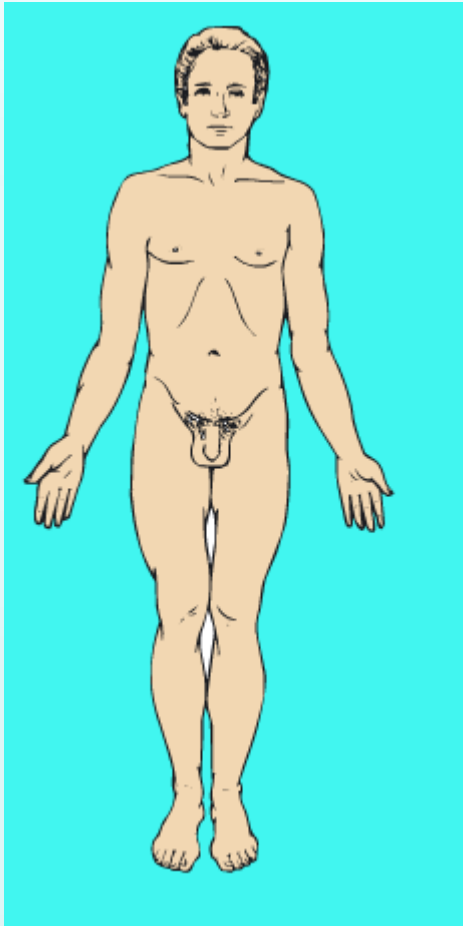




The
University
Of
Sheffield.

Made to Measure; using on-line
resources to tailor teaching to an
individual cohort

Katherine Linehan



Why create the resource?

- **Increase in student numbers: 80 to 180 in past 5 yrs.**
- **Increasing diversity of the student body, resulting in greater variation of learning styles.**
- **Increased emphasis on 'value added' in terms of student progression.**

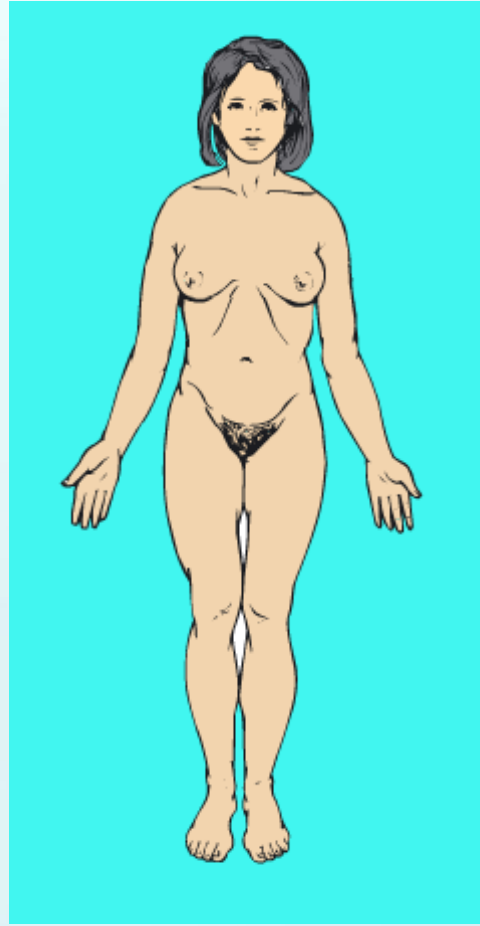
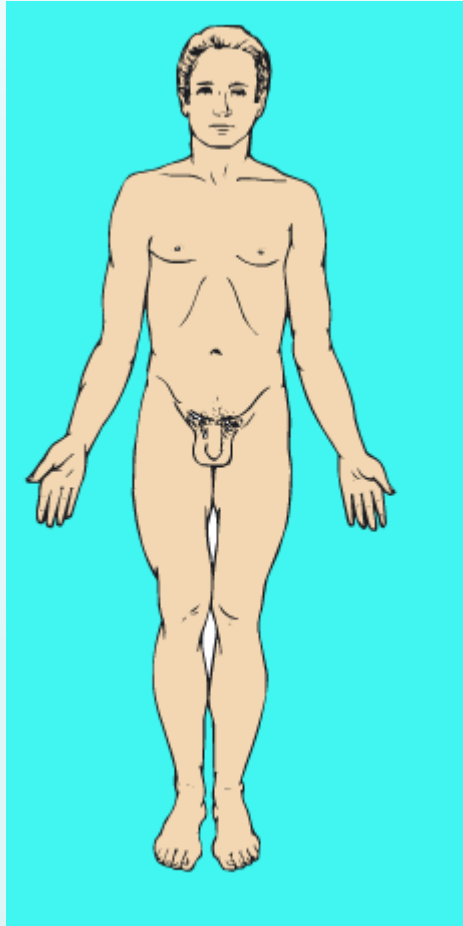
What is the resource?

- **Two web-based on-line quizzes.**

How does the resource work?

- **Students complete a diagnostic test prior to the commencement of the module.**
- **Results are used to inform lecturer's teaching and give students feedback on their level of prior knowledge.**
- **Similar diagnostic test at the end of the module informs the student of their progress and gives feedback to the lecturer about their teaching.**

The resource.....



What do you know about Endocrinology?

background: [color swatches] Kath Linehan

Question 4 of 22

Which of these activities do you think induce stress in the body?

Drag each one into the relevant box.

Not sure

next question

stress

no stress

appearing on a game show

eating a chocolate bar

drinking alcohol

jumping into a swimming pool

smoking a cigarette

dancing at a night club

taking an exam

What do you know about Endocrinology?

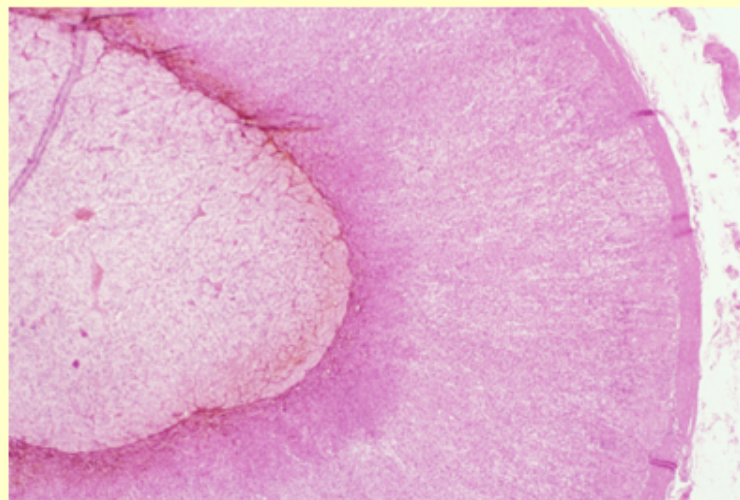
background:
Kath Linehan

Question 2 of 22

Do you know which of these diseases can occur as a result of damage to the adrenal cortex?

- Addison's disease
- Acromegaly
- Cretinism
- Grave's disease
- Not sure

[next question](#)

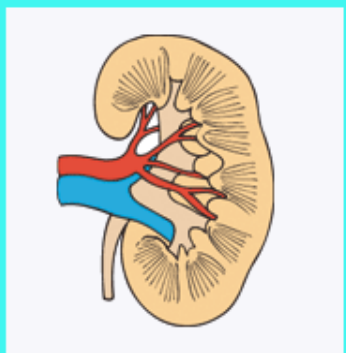
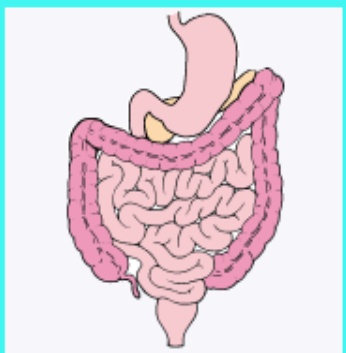
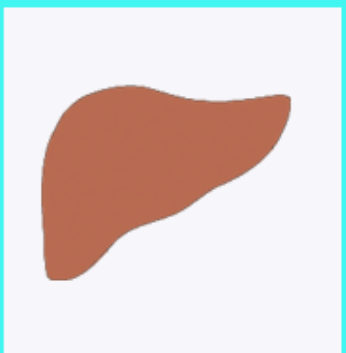
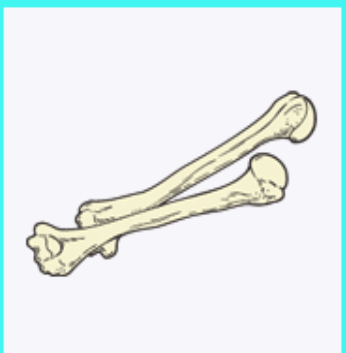


What do you know about Endocrinology?

background:
Kath Linehan

Question 17 of 22

Select any of these components that help balance calcium in the body.



Not sure

next question

What do you know about Endocrinology?

background:
[Logout](#) [Print](#)

Quiz summary for Kath Linehan

Question 1: Where is the thyroid gland?

Your answer: not attempted

Question 2: Which disease can occur as a result of damage to the adrenal cortex?

Your answer: not attempted

Question 3: Which gland (in the throat) is enlarged in this picture?

Your answer: not attempted

Question 4: Which activities induce stress in the body?

Your answer:

Question 5: What does the thyroid gland do?

Your answer: not attempted

Question 6: What gland produces growth hormone?

Your answer:

Question 7: What is the correct order of the three stages of stress?

Your answer: not attempted

Question 8: Which student was right about what insulin does?

Your answer: not attempted

Question 9: Parathyroid hormone regulates the concentration of which substance?

Your answer: not attempted

Question 10: What is a key symptom of hypothyroidism?

Your answer: not attempted

Question 11: What is the result of excess growth hormone in adulthood?

Your answer: not attempted

What do you know about Endocrinology two?

background: [Print](#)

Welcome to endocrinology No2...

You'll remember I asked you to complete a quiz before my lecture course so that I could try and concentrate on the areas most needed. Now you've attended the lectures I'd like to know how well you've understood my teaching - in other words how good my teaching was!

These 18 questions will help me evaluate my course, so *please don't guess* any answers - abstain from any questions you don't think you know the answer to.

The quiz will also help you to judge any aspects of endocrinology you may need to focus on in revision, and you'll get feedback to each of the questions.

You have an unlimited amount of time to complete the quiz, but you can only gain access to it once, so you need to go through to the end once you start - although it will be made available again later for revision.

Finally, if you complete both quiz 1 and quiz 2 you will gain 10% towards the total marks for this module, irrespective of your scores. However, completion of only one of the quizzes will give you 0%.

Thanks very much. I hope you enjoyed the course.

Below you can choose your preferred background colour:

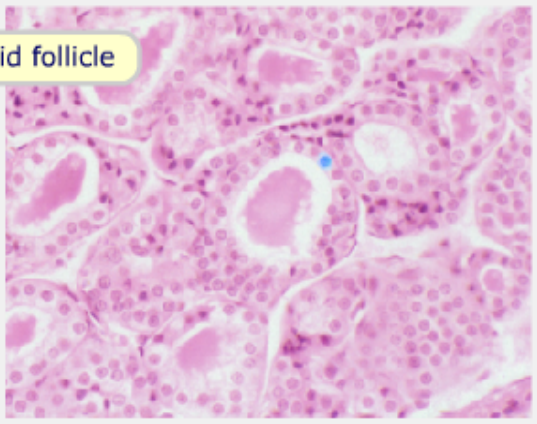
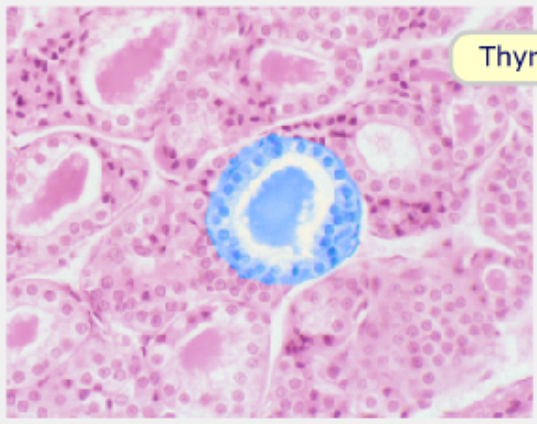
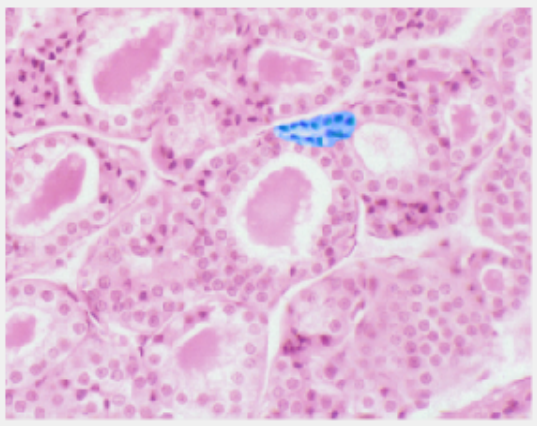
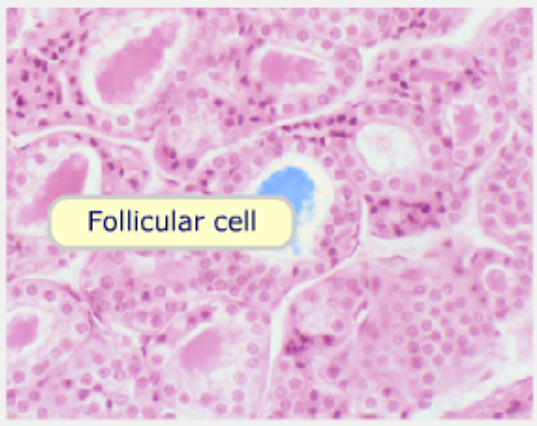
- Pale grey background (default)
- Pale blue background
- Pale yellow background
- Pink background
- Cyan background

[Start the Quiz >>>](#)

Question 1 of 18

Drag the labels to the appropriate position on the slide.

- Parafollicular cell
- Thyroglobulin



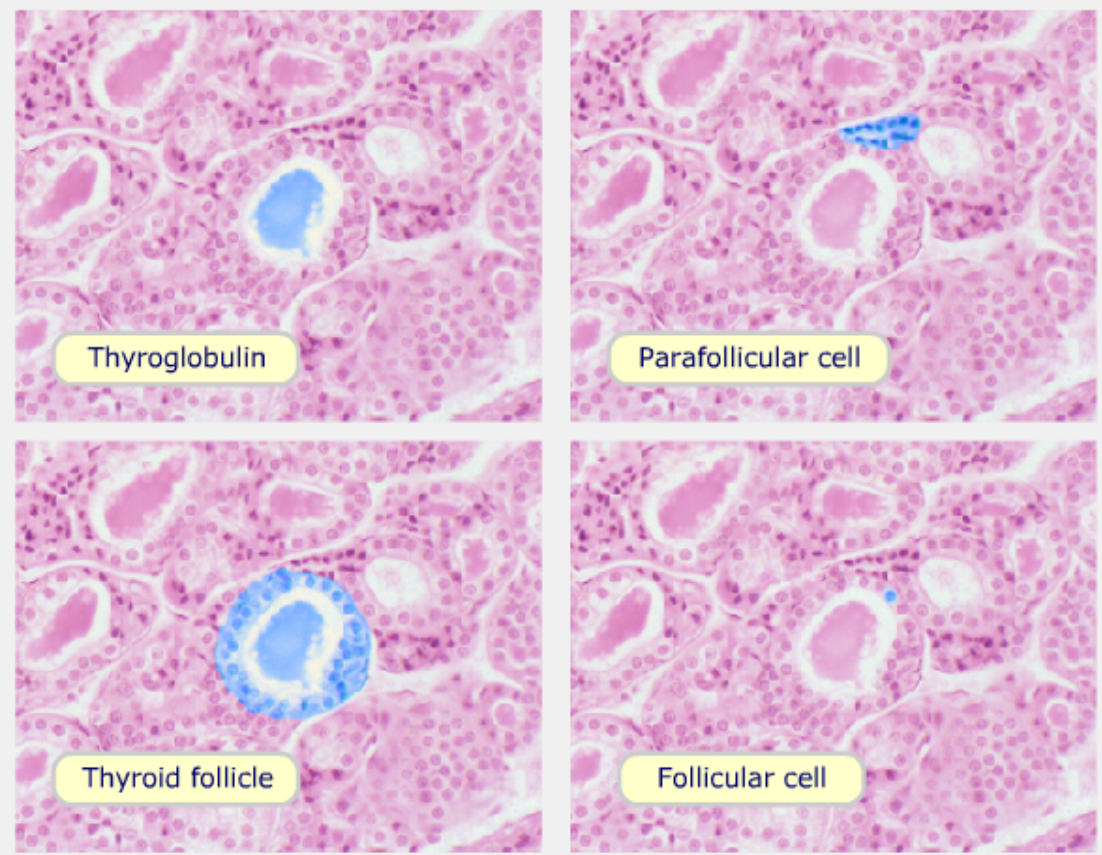
not sure

submit & get feedback

Question 1 of 18

Drag the labels to the appropriate position on the slide.

Correct answer:



next question

What do you know about Endocrinology two?

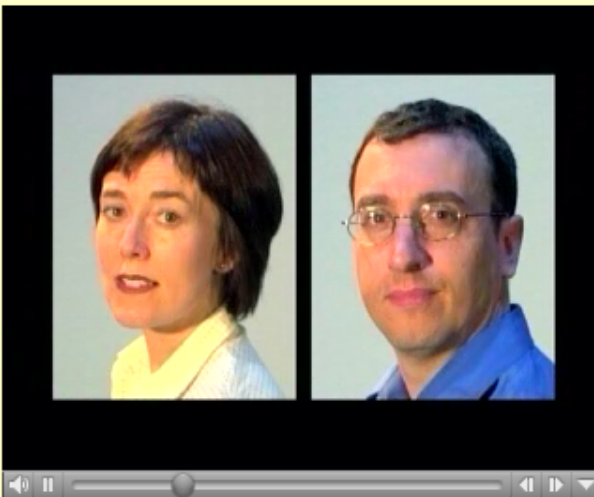
background:  Kath Linehan

Question 7 of 18

Play the video and explain why Suzy and Dave often feel thirsty. Type in the box below.

not sure

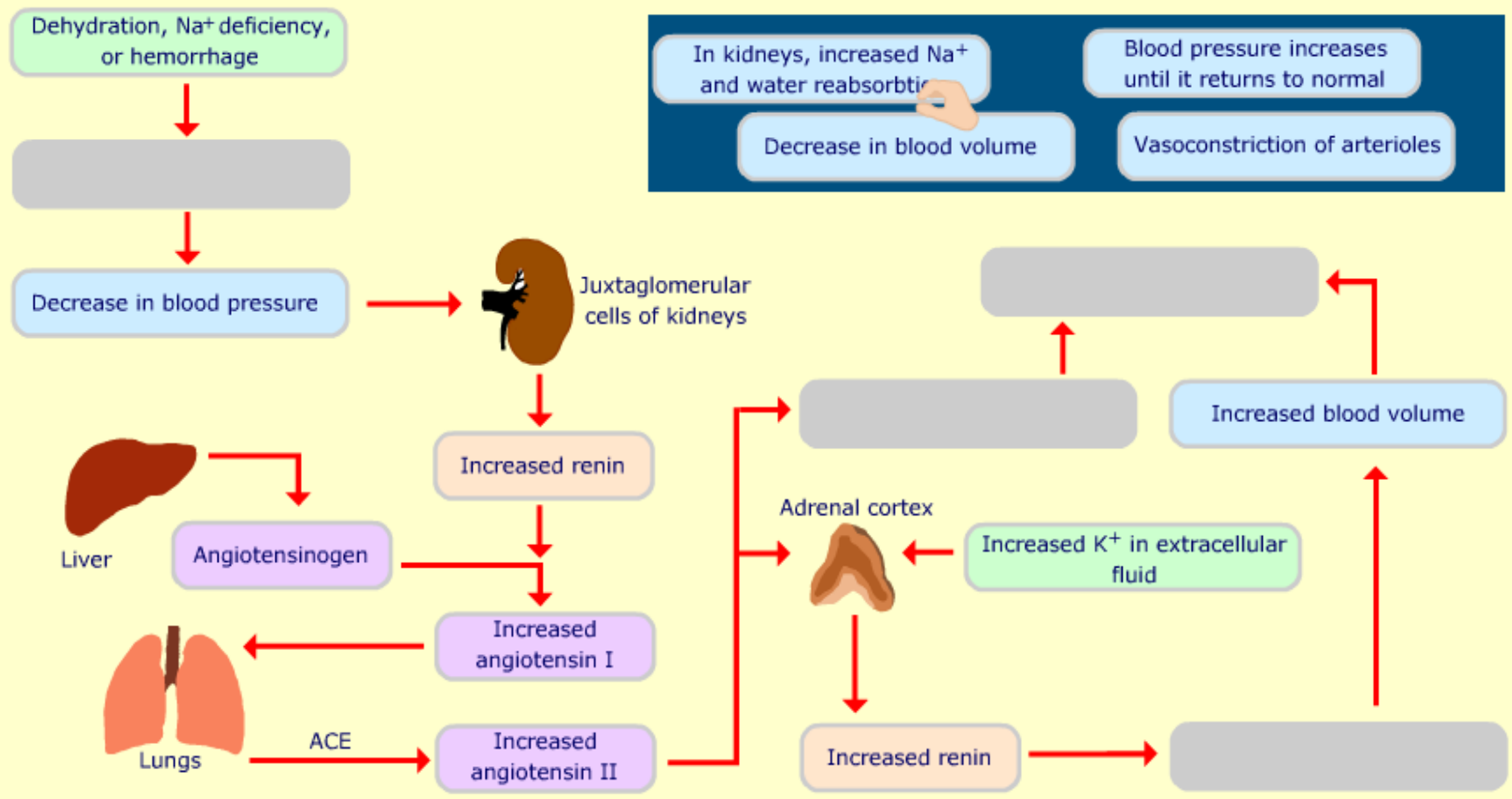
[submit & get feedback](#)



Open Transcript >>

Question 10 of 18

Drag the statements into their appropriate blank in the Renin-Angiotensin-Aldosterone pathway.



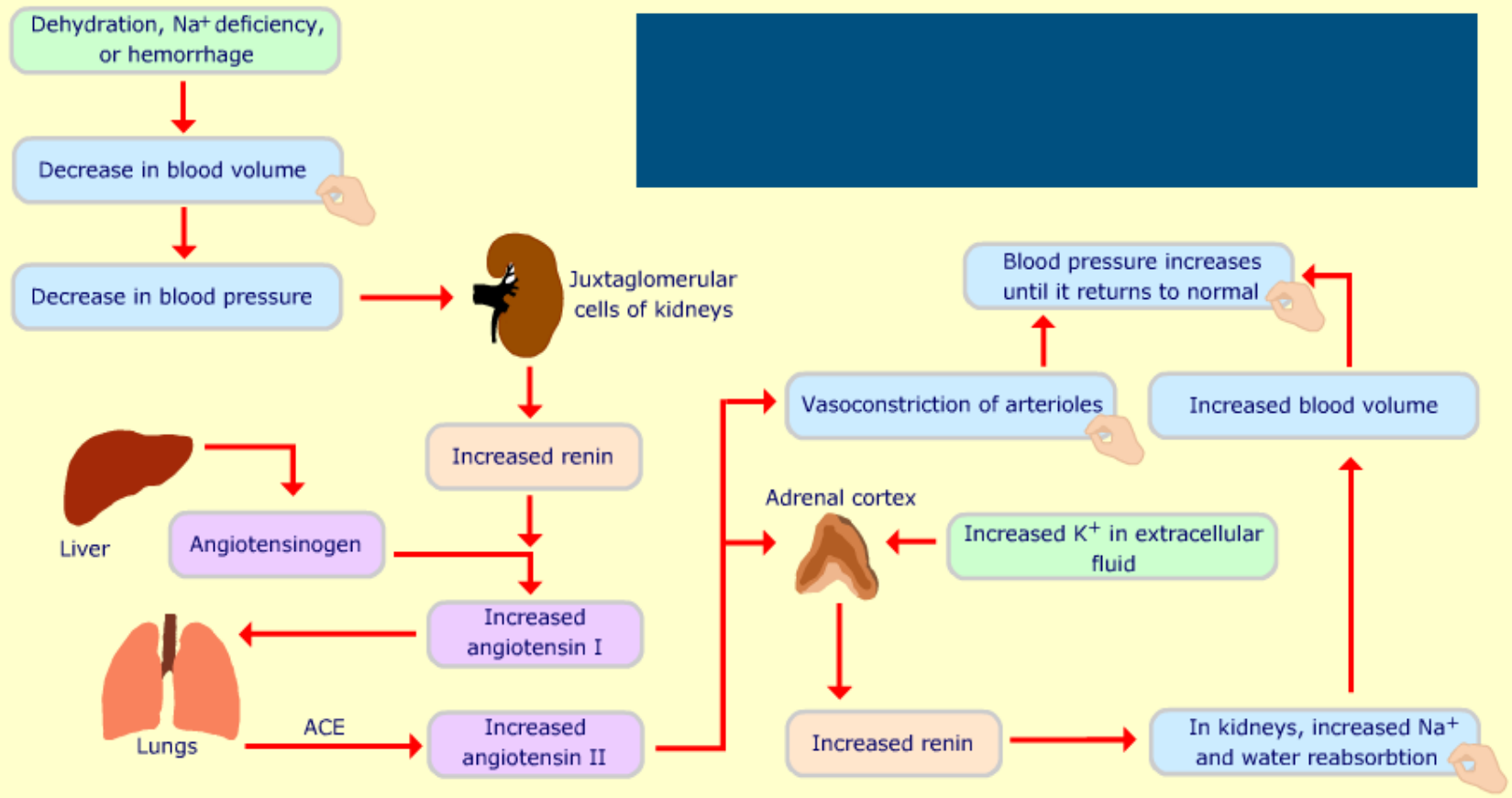
not sure

submit & get feedback

Question 10 of 18

Drag the statements into their appropriate blank in the Renin-Angiotensin-Aldosterone pathway.

Correct answer:



next question



Quiz summary for Kath Linehan

Question 1: Drag the labels (follicular cell, parafollicular cell, thyroglobulin, thyroid follicle) to the appropriate position on the slide.
Your answer: wrong

Question 2: Hypersecretion of insulin-like growth factor-1, after closure of the epiphyseal plates results in (a) Gigantism, (b) Acromegaly, (c) Dwarfism, (d) Cretinism
Your answer: not attempted

Question 3: Osteomalacia results from (a) Insufficient vitamin D in adulthood, (b) Insufficient vitamin D in childhood, (c) Excess calciferol in adulthood, (d) Excess calciferol in childhood
Your answer: not attempted

Question 4: Play the video. Jane feels the cold because she has (a) Hypothyroidism, (b) Hyperthyroidism, (c) Euthyroidism, (d) Hypoparathyroidism
Your answer: not attempted

Question 5: Thyroid hormone increases body temperature by what means? (a) Synthesis of sodium/potassium pumps, (b) Decreasing oxygen consumption, (c) Conserving ATP, (d) Stimulating shivering
Your answer: not attempted

Question 6: Which of the following is produced by the neurosecretory cells of the hypothalamus? (a) Growth hormone inhibiting hormone, (b) Growth hormone, (c) Insulin-like growth factor I, (d) Somatomedin
Your answer: not attempted

Question 7: Play the video and then explain why Suzy and Dave often feel thirsty.
Your answer: not attempted
Self-marked as: not attempted

Question 8: A hypodermic injection of adrenaline would: (a) Increase heart rate, increase blood pressure, dilate the bronchi and increase peristalsis, (b) Decrease heart rate, increase blood pressure, constrict the bronchi and increase peristalsis, (c) Decrease heart rate, increase blood pressure, constrict the bronchi and decrease peristalsis, (d) Increase heart rate, increase blood pressure, dilate the bronchi and decrease peristalsis
Your answer: not attempted

Question 9: Play the video. Which medical student do you agree with? (a) Jenny, (b) Ram, (c) James, (d) Rachel
Your answer: not attempted

Question 10: Drag the statements into their appropriate blank in the Renin-Angiotensin-Aldosterone pathway

What do you know about Endocrinology?

background:

Login

In order to gain access to the quiz please enter your user name and password:

User name:

Password:

Login

The quizzes will be accessible until the end of September and you can log in as many times as you like.

You have an error in your SQL syntax, check the manual that corresponds to your MySQL server version for the right syntax to use near " at line 1

Warning: Unknown: Your script possibly relies on a session side-effect which existed until PHP 4.2.3. Please be advised that the session extension does not consider global variables as a source of data, unless register_globals is enabled. You can disable this functionality and this warning by setting session.bug_compat_42 or session.bug_compat_warn to off, respectively. in **Unknown** on line **0**

If you get this error message just hit the 'Back' button and log in again.

The acid test.....

- **“Quizzes are very helpful to help you identify the areas you need to read up on the most. I think all modules should use more formative assessment like this.”**
- **“I liked the way the questions were all presented in different ways i.e. the videos/drag n drop responses. plus i loved the fact that you could choose your background colour :)”**
- **“I think the lecturing for this module is the best we have had so far at level 1 and 2. It is made interesting and we get so much out of attending the lectures, we leave knowing a huge amount.”**
- **“Convince other lecturers to do the same :o)”**