



New Approaches to Assessment - Online

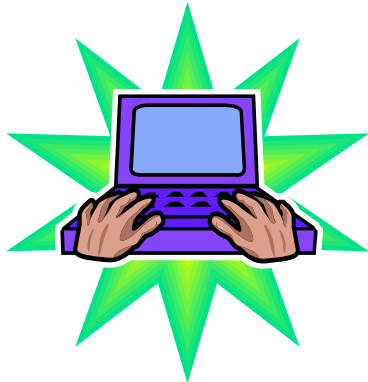
Self and Peer Assessment of Text

Originally a web-based self assessment exercise completed by level 1 LS students to introduce them to text assessment and the criteria that may be used to judge answers

Now developed to a more complex self and peer based system that offers flexibility and innovation through its approach

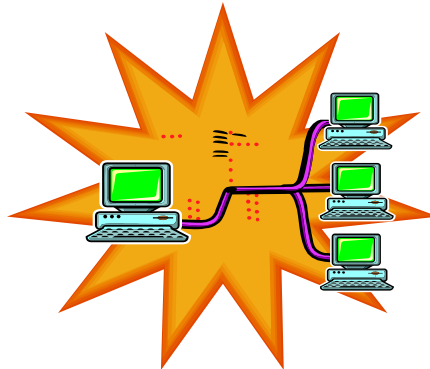


How it works

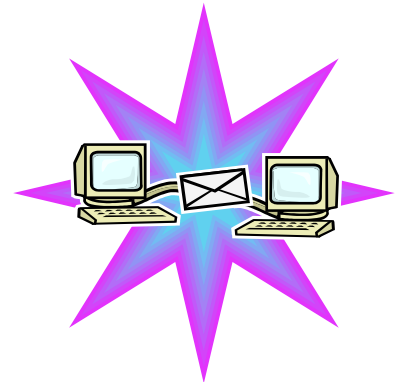


→ • Instructor designs question, sets word limits and details criteria and scoring ranges

→ • Student submits their answer (may copy & paste)



→ • Self-assessment completed by student using criteria set
• Student completes an assessment of one of their peers
• Student completes an assessment of a second peer
• Results stored



→ • Peer 1 assessment e-mailed anonymously to student author
• Peer 2 assessment e-mailed anonymously to student author
• Summary of marks presented
• Student thanked for completing exercise and offered URL.

The lecturer still has difficult bit!

design a good exercise
and
guide the student experience

For example:

- ◆ Demonstration of an Exercise/Assessment as an interactive element of a VLE course
- ◆ Demonstration of the program in action – creating a NEW exercise, live and interactive
 - www.dundee.ac.uk/learning/ilt/

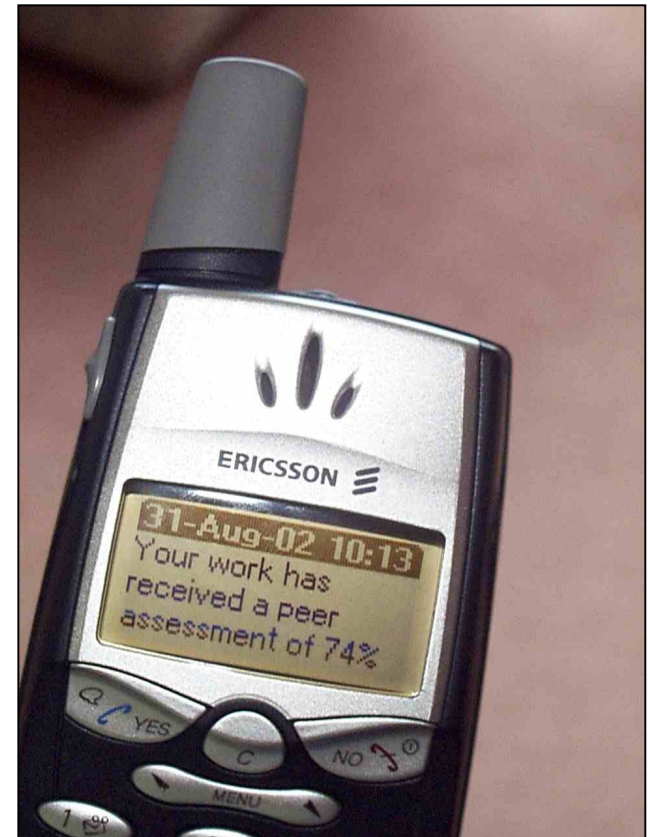
Further development

Should be able to soon offer

- tutor marking provision,
- automatic check for copying & plagiarism,
- present criteria to students before exercise

And perhaps eventually include

- computer marking of free text
- feedback on feedback



More?

For further information, please contact
Dr Richard Parsons on
r.parsons@dundee.ac.uk
or (01382 344265)

Innovative Learning Technologies page:

<http://www.dundee.ac.uk/learning/ilt>