



## Safety Net

Safety Net is a small utility for backing up critical files. It has one default setting and three that are options of your choosing.

The preset setting will backup your critical Windows and system files. You need only specify the path to your Windows directory, and the program will automatically copy all "grp", "ini", and "inf" files from both your Windows and Windows\system directories. At the same time the program will copy your "config.sys" and "autoexec.bat" files as well.

[Windows Backup Options](#)

[Other Backup Options](#)

[Menu Items](#)

[Visual Overview](#)

[Registration](#)

## **Safety Net**

Ron Parker  
CT Software  
759 Galleon Ln.  
Elk Grove, Il. 60007



## Windows Options

Safety Net is set up to automatically find your "windows" directory on its own, so if you simply wish to use the default backup, just hit "start". If, however, you would like to add some file extension types you must first click on the "Options" button. This will bring you to the Options dialog screen.

One option accessible from here is the "Create Subdirectories" button, which will put each file type in a separate directory from the other file types. Whether or not this option is checked, Safety Net will look for each default and any user specified file types in both the "windows" and "windows\system" directories, and copy them to separate directories. In other words "Windows" and "System" files will be kept separate. If this button is checked, however, there will then be another level of separation. It will create "windows\ini", "windows\grp", "system\ini" subdirectories, and so on, on the destination disk.

Another section of the "Options" screen is **"File Extensions For Backup"**. If you type "PIF" in one of the text boxes, Safety Net can then copy your PIF files along with the others. There are five options available.

Clicking on "OK" will then bring you back to the main screen. Here you can uncheck any of the selected options if you do not want to copy that particular file type.

You can backup to any drive you like. The default is "A", but, if you wish to change that, type in the drive of choice in the box titled "Backup to drive..."

If you select "Backup" from the menu, one of the choices is "Create Subdirectories". This is exactly the same as the "Create Subdirectories" box on the "Options" screen. If one is selected the other is also selected.

The last option available is whether you wish to ZIP the files to your disk. In order for this option to function you must have a copy of PKZIP somewhere in your path.



## Other Options

If you have not gone through the "Windows Options", please do so before continuing with this section. Once you have backed up your Windows files you should have a pretty good sense of what to do with your other options.

If, for example, you work with a database program, and have several databases that you are constantly adding to or otherwise manipulating, you can set up Safety Net to easily back those database files to a disk.

From the main program screen, click on the Option 2 button, and then click on "options" to go to the Options screen. Browse through your files to find the directory containing the database files. Then, in the "File Extensions For Backup" text boxes, type in the extension(s) you wish to backup (such as MDB for example). You can copy up to 5 file types for each directory selected. Type a name for the option in "Option Name" such as "Database". Then type a name in the "Destination Directory" You could put "Database" here also, if you wish.

Safety Net is capable of searching subdirectories for your file types. This function can be enabled by checking "Search Subdirectories". The program is capable of searching seven directories deep, so if you have any of your file types buried beyond that, you will have to adjust your destination directory accordingly.

If you wish to copy or zip an entire directory to disk, you can accomplish that by choosing a directory, checking or unchecking the "Search Subdirectories" box, and checking "All".

Once your options are all set, click on "OK" to return to the main program screen.

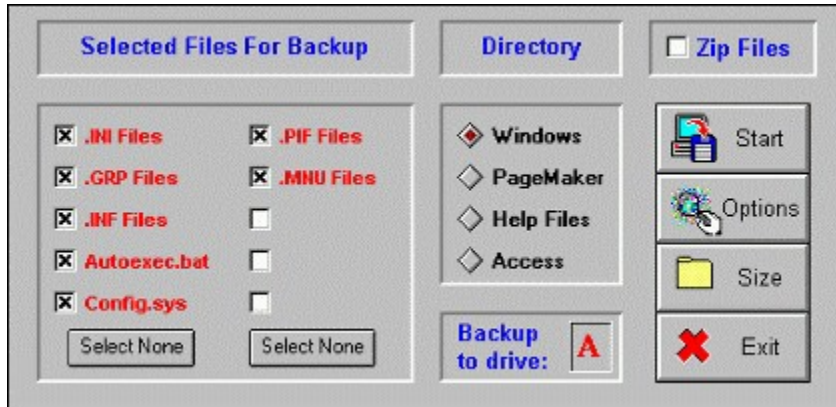
You can backup to any drive you like. The default is "A", but, if you wish to change that, type in the drive of choice in the box titled "Backup to drive..."

If you have a great number of files to copy, try checking the "Zip Files" option, or don't, as you wish. You must have PKZIP in your path in order for this option to work. Then click on "Start".



## Visual Overview

Click on any section of the image below for an explanation of it's function. Be certain to click on the "Options" button.



If this box is checked Safety Net will ZIP the selected files to your backup disk. You must have PKZIP somewhere in you path for this option to work.

[Click here to exit the program.](#)

Clicking on Start will initiate the backup. You will be prompted to insert a disk into the selected drive, and the selected files will then be copied.



"Windows" is selected when the program starts. If you wish to backup files from a previously configured option, make that selection here.

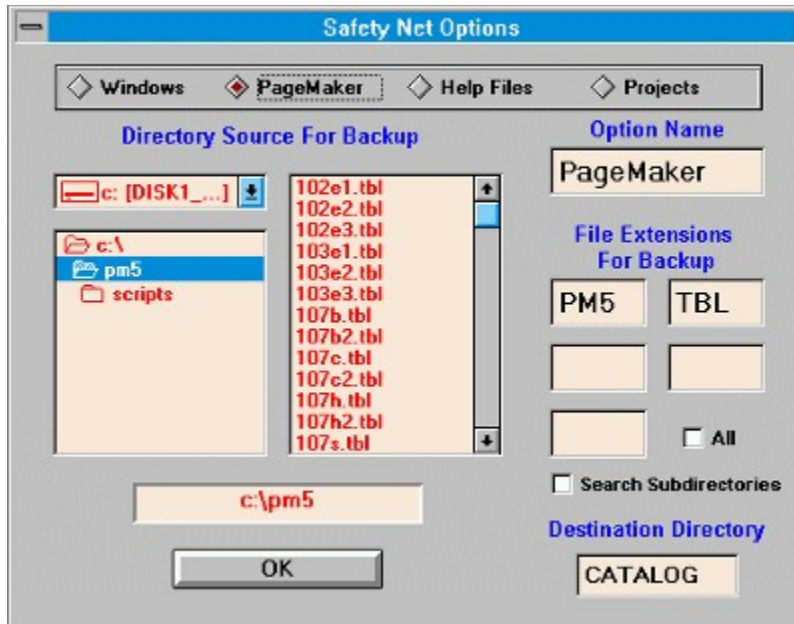
Choose the backup drive here. The default is drive A, but if you wish to change it, backspace the "A" out and type in your selection here.

All valid entries will be selected for backup automatically. By clicking on the various options, you can de-select each individually or as a group here.



## Options Screen

Click on any section of the image below for an explanation of it's function.



For the Windows option, the destination directory will be "Windows". For the other user defined options you must type in a name here. That name will be the directory that Safety Net will copy the files to on the selected disk drive, **unless** the files are to be zipped. In that case the name typed in here will be the name of the ZIP file created.

[Click here to leave the Options screen and return to the main program screen.](#)

Browse to find the desired directory for backup here so that the complete path is in the text box at the bottom.

These option buttons correspond to the "Directory" section of the main screen. Whatever name you enter for "Option Name" will appear for both button names.



Enter the particular file extensions for backup here. There are 5 selections available for each option. Whatever you enter here will appear in the "Selected Files For Backup" section on the main screen. If you wish to copy or zip an entire directory to disk, you can accomplish that by choosing a directory, checking or unchecking the Search Subdirectories box, and clicking on "All". This feature is disabled for the "Windows" option.

The name that you enter here will appear as the available directory names for backup on both this and the main screens.

Available for the "Windows" option, if "Create Subdirectories" is selected, Safety Net will put each file type selected for backup in separate subdirectories on your disk. For example, if you are backing up \*.INI and \*.GRP Files, Safety Net will create INI and GROUP subdirectories in order to keep the file types separate.

For the other options, the caption changes to "Search Subdirectories". If checked, Safety Net will search nested directories (seven total levels only) for your selected file types. The program will not create separate directories on your backup disk, so if there are two files with the same name, one **will** be overwritten.



## Menu Items

### **Backup Menu**

Start

Options

Get Size

Create Subdirectories

Search Subdirectories

Exit

Accessing this feature will bring up a dialog which will show you how many files will be copied, how much disk space will be required to backup the files, and will show you a list of the files to be copied. This list can be printed out, if so desired, by clicking on "Print Files" from the "Print" menu item of the dialog. This feature can be very helpful in determining how many disks will be required to perform the configured backup **if the files are not zipped**. Naturally, it can also help you to determine if you would rather zip the files.

The current directory tree can also be printed from here by accessing "Print Tree" from the "Print" menu. If you set the directory source to the current drive (such as "c:\"), Safety Net will print out your entire drive tree. Keep in mind that the program will only dig 7 directories deep, so anything below that will remain undetected.



## Registration

This program was written by:

Ron Parker  
CT Software  
759 Galleon Ln.  
Elk Grove, IL 60007

To register the program send \$10.00 to the above address, and we will mail you a copy of the latest version.

Please support SHAREWARE!

Compuserve: 75264,3237  
AOL: RON2222



