

Contents

Introduction

What is an uninstaller ?

Registered version

Program characteristics

System requirements

Usage of *Care4Win 1.0*

Installation of *Care4Win 1.0*

Desktop elements

Messages

Saving an application

Deleting an application

Installing an application

By the way

What is an uninstaller ?

Problem

At an installation of a new application the install-routine will copy except program-files and info-files supplemental programspecific files to your harddisk, for example library-, init- and group-files. In addition most application will add several entries in your win.ini- and system.ini-file. In most cases you don't take notice of all these changes and you won't complete know which files are installed. If you go on to delete an application there are still a lot of files and ini-entries on your system using worthy disk space. Especially when evaluating shareware-CD's install-routines blow up your ini-files, creating several program-groups without any influence by you.

Solution

The uninstaller controls the installation of an application without influencing it and an uninstaller-controlled installation is easily deleted. For that the uninstaller has to ist work very carefully.

The basic idea of uninstaller is quite simple. Before starting an installation the program wil check all diskdrives, directories and files and also win.ini, system.ini, control.ini, autoexec.bat and last but not least config.sys. Then it waits for completing an installation. After this it checks your system once again and will recognize all execute changes and save them.

By demand you can delete such an application. Referring to saved data uninstaller undos all changes caused by the install-routine. Files will be deleted, directories will be removed and your configurationfiles will be brough back to old values. It will look like you never had carried the application aside your system.

More information

Saving an application

Deleting an application

Program characteristics

Registered version

Difference to shareware

The registered version won't have any shareware hints. You will merely see a logo-screen while initializing *Care4Win 1.0*. There will be no limit of applications you can control (shareware: 5 applications). And you will get the latest release.

Note

I decided to distribute my program as shareware. Therefore I will be very grateful for spreading this program at any hinkable way (the only way I will get a cadillac). So I will copy a lot of shareware- programs onto my disks. If you don't like that, please note it on the registrationform

By the way

CARE4WIN 1.0 isn't merely a pretty tool for checking installations, it's also useful when you test programs on CD-ROM. It can help you saving a lot of disk space.

Use it the same way you would do with an install-routine but instead running the install-routine run the program you're interested in.

By pressing the delete-button you can be sure of having a proper system.

Messages

Overview of messages

Ready.

Please be patient!

Comparing data.

Please input name of the application you want to install.

Reading directories and files.

Saving is not completed. Do you really want to quit ???

You now can start installation.

Examining Configuration-file.

First saving is completed.

Do you really want to quit memphis ?

Could not recognize any change. Will not create Undo- file.

Deleting can`t be executed ! Select an application and try it again.

Do you really want to delete this application ?

You should check changes in files autoexec.bat and config.sys by using Sys- Edit.
By pressing Yes- Button Sys- Edit will be started.

Could not find Sys- Edit.

Configurationfiles have been actualized.

Files and directories will be deleted.

Directory could not be deleted. There still are data- files in this directory. Backup
your worthy data.

By deleting the file shown above other applications may not work properly. Do you
want to delete this file ?

Ready

Meaning

Program is waiting for your commands.

Comparing data.

Meaning

This message is shown at the end of the second saving. The data of the two savings will be compared (files, directories, entries in system-files).

Please be patient!

Meaning

This message is shown while the program is working.

Note

Sometimes you may think the program doesn't work anymore because no other messages were shown and no drive is activated and also you're not able to switch to another task. But don't worry. In such a case you should wait some minutes more than you normally do. Perhaps the current installed program has done more complex changes than other programs do. During testing the program on a lot of machines with a huge number of different install-routines I had not a single system-crash.

Please input name of the application you want to install.

Meaning

This message is shown if you have activated the **Save button** but you've left the field **Name of application** empty.

Elimination

Exit messagebox by activating Yes-Button and input name of application. Activate Save--button once again.

Reading directories and files.

Meaning

This message is shown at the beginning of a **Saving process**. All necessary information will be evaluated.

Saving is not completed. Do you really want to quit ???

Meaning

This message is shown if you want to quit *Care4Win 1.0* before you didn't run the second saving-process.

Elimination

If you have installed an application after first saving you absolutely should complete the whole **Saving-process** by running the second saving.

If the installation failed you also should run the second saving. If there haven't been made any changes **Care4Win** will recognize this and won't create an undo-file. The only thing then you will sacrifice is a little time.

If you haven't took a look on the install-routine and you haven't also changed nothing at your system you can go on by pressing ESC or selecting Cancel- button.

You now can start installation

Meaning

This message is shown after completing the first saving.

Examining Configuration-file

Meaning

This message is shown while scanning INI-files, config.sys and autoexec.bat.

First saving is completed

Meaning

This message is shown after completing the first saving.

Do you really want to quit *Care4Win* ?

Meaning

Are you really shure of ?

Could not recognize any changes. Will not create Undo- file

Meaning

Care4Win hasn't found any changes. Program can't create Undo-file.

Deleting can't be executed ! Select an application and try it again.

Meaning

This message is shown if you haven't selected any application to delete in listbox **Installed applications**.

Elimination

Active OK- button, select an application and try it again.

Related Themes

Deleting an application

Do you really want to delete this application ?

Meaning

This message is shown after selecting an application to delete. You will get afterwards a second query. Better think twice. I don't want you to install unnecessarily an application a second time.

Elimination

If you're not shure of activate Cancel otherwise OK to struggle with the next query.

Related Themes

Deleting an application

You should check changes in files autoexec.bat and config.sys by using Sys- Edit. By pressing Yes- button Sys- Edit will be started.

Meaning

Care4Win 1.0 has rebuild the origin entries in files named above. Now you can check these two files by pressing OK-button.

Important

Care4Win 1.0 eventually tried to rewrite previously deleted entries. That should´nt be a problem in most cases. But if there had been a lot of installations after installing the deleted program it isn´t always possible to write the deleted entries back at the right place. However this very important in this two files. If there have been exchanged two entries it may be possible that two drivers will be loaded in wrong order. But that´s the point. If the first driver depends on the second driver the load-operation will fail. If you have any strange messages while starting windows or it doesn´t start at all take a look a the file BOOTLOG.TXT in windows-drectory. There you were shown which drivers could´nt be loaded.

Therefor you should´nt damn *Care4Win 1.0*, it only has brought back what the deleted program has removed.

Related Themes

Deleting an application

Could not find Sys- Edit.

Meaning

If you have decided to check your system-files the program tries to start SYSEdit. This message is shown if this operation failed. Please check if SYSEdit is really installed on your system. Refer to Windows-Help section Installing Windows-Components.

First Aid

If you want to check these file immediatly you also can use NotePad to check them.

Further help

Windows-Setup- help

Directory could not be deleted. There still are data- files in this directory. Backup your worthy data

Meaning

Care4Win 1.0 has deleted all directories and files created by the deleted application. While working with the deleted application you probably have created new files or new directories. They are possible to contain worthy data. If you're shure to delete them you have to do it by yourself. I recommend to backup them first. But that's your own decision.

Behaviour

Check directories using file-manager. Decide by yourself if you want to delete these files or bakup them if you're not shure. If your not familiar with file-manager you can start file-manager help direct from below.

Note

This NOT-deleting is no weakness of *Care4Win 1.0*. It was implemented to save your data.

Further help

[File- Manager help](#)

Configurationfiles have been actualized

Meaning

This message shows you that *Care4Win 1.0* has deleted and added entries in your system-files which the deleted application added (removed) at the point of installation.

Files and directories will be deleted.

Meaning

This message shows you that *Care4Win 1.0* deletes the files and directories of the saved application. Only data-files will be left and directories which contain them.

By deleting the file shown above other applications may not work properly. Do you want to delete this file ?

Meaning

The shown file is a group-file or a Dynamic-Link-Library (DLL's). DLL's are created to be used by several programs, but it's impossible for **Care4Win** to find out if this file is really used by other programs than the program you want to delete. There are some typical Libraries like BWCC.DLL, VBRUN100.DLL, VBRUN200.DLL, VBRUN300.DLL and THREED.VBX which are actually used by several programs, so they should'nt be deleted. Group-files also were included in this query because it's possible that you've changed your look & feel of your windows-desktop.

Info

If you're not shure you should abort deleting by selecting the Cancel-button; don't forget to note the filename and directory. After completing the process you should move these files to a temporary directory. While restarting Windows you will get an errormessage if one of these files should be missing. If so, move the named file to Windows\System - directory. Repeat this until you have get no more errormessages. Then you can go on deleting the files left in the temporary directory.

Note

It's very important to MOVE these files and not to copy them. If you would only copy them you would'nt get any errormessage because these files still would remain in source-driectory.

Save (Button)

Explanation

With this button you can controll an **Installation of application** .

Possibilities of selection

- Move mouspointer to button an press left mousebutton.
- Press [ALT + S].

Related subjects:

Saving an application

Delete (Button)

Explanation

With this button you can delete an application saved by *Care4Win 1.0*.

Possibilities of selection

- Move mouspointer to button an press left mousebutton.
- Press [ALT + L].

Related subjects:

Deleting an application

Order (Button)

Explanation

With this button you can print the order-form.

Possibilities of selection

- Move mouspointer to button an press left mousebutton.
- Press [ALT + B].

Info

The order-form will be immediately printed. You only have to fill in your adress and the way you like to pay.

Help (Button)

Explanation

With this button this help will be started.

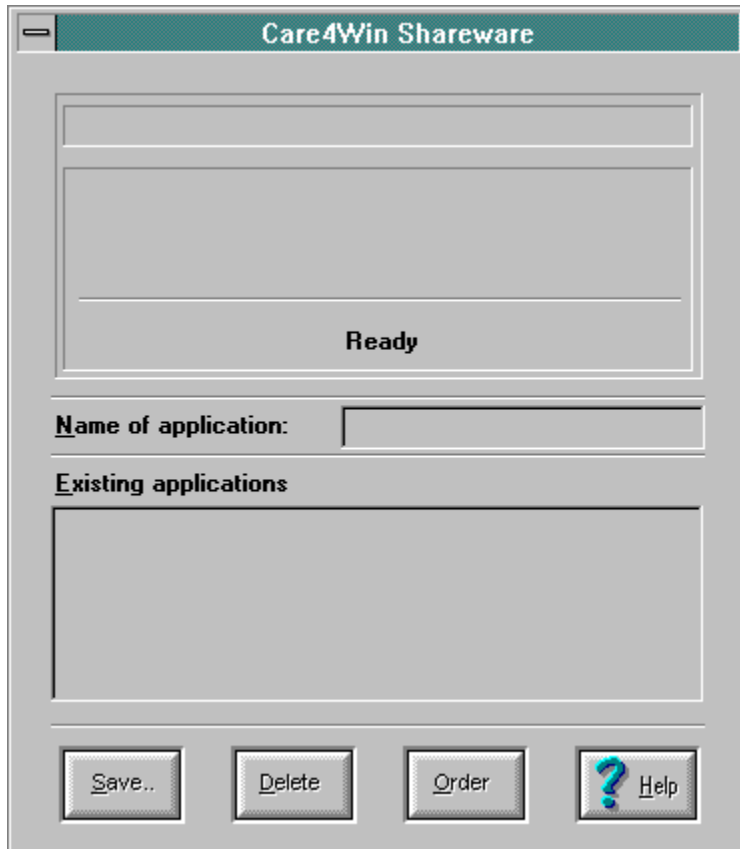
Possibilities of selection

- Move mouspointer to button an press left mousebutton.
- Press [ALT + H].

Overview

Mainwindow of *Care4Win 1.0*

Click region you need help on.



1. Statusline

Explanation

In this line *Care4Win 1.0* displays the current activity.

Related subjects

Messages

2. Actionline

Explanation

In this line *Care4Win 1.0* displays the current processed directory.

Related subjects

Messages

3. Activityline

Explanation

In this line you can see if *Care4Win 1.0* is actually working or ready for input.

Related subjects

Messages

Name of application

Explanation

In this field you can type in the name of application you want to install. After successful installation this name will be inserted into the listbox **Installed applications** .

Possibilities of selection

- Move mousepointer to editfield and press left mousebutton.
- Press [ALT + N].

Info

Type in an expressive name for application or name of CD-ROM to avoid confusion.

Related subjects

Saving an installation

Installed applications

Explanation

In this listbox you see all applications saved with *Care4Win 1.0*.

Possibilities of selection

- Move mousepointer to listbox at name of application you want to delete and press left mousebutton. Press **Delete-Button** .Program will be deleted after answering security-query.
- Move mousepointer to listbox at name of application you want to delete and doubleclick left mousebutton. Press **Delete-Button** .Program will be deleted after answering security-query.
- Press [ALT + I].

Related subjects

Deleting an application

Installation of *Care4Win 1.0*

Principal

Care4Win 1.0 is delivered with an install-routine. With this program you can easily install *Care4Win 1.0* onto your system. How to use it is described below.

Installation

Start the install-routine using program-manager or file-manager. For further information select corresponding help (refer to Further Help).

The file-name of the install-routine is setup.exe.

Now you can declare drive and directory where the program is installed to, or use default [C:*Care4Win 1.0*].

At last you will be asked for creating a new group in program-manager. Select Yes or No. Afterwards necessary files will be copied onto your system and that's all. Installation is completed.

Further help

[Program- Manager- help](#)

[File- Manager- help](#)

Installing an application

Important

For installing a new application you must strictly restrain the following steps, otherwise you probably won't be able to unistall the installed program:

At first start *Care4Win 1.0* and type in the name of application you'd like to install. Press Save-button. Start install-routine of the application you want to install. After completing this install-routine switch back to *Care4Win 1.0* and press Save-button again. If you see the message Installing a new application you can go on installing a further application or you can quit the program by pressing ALT+F4.

General

On any problem with installation refer to users-manual or choose help below.

Further help

[Program- Manager- help](#)

[File- Manager- help](#)

Saving an application

Meaning

Saving means: All changes on your system caused by an installation will be recognized and saved in a mem-file. So you can revoke these changes by deleting the program with *CARE4WIN 1.0*.

Proceeding

If you intend to install an application at first start *CARE4WIN 1.0*. Type in the name of application you'd want to install and then press **Save**. Now your system will be scanned. As you see the message 1. saving completed you can go on installing the application. (Therefore refer to the owners manual)

After completing the install-routine switch back to *CARE4WIN 1.0* using [ALT + TAB] or taskmanager and press Save-button once again. Your system will be scanned a second time. Data of first and second pass will be compared . The result will be saved in a file with *.mem-extension. These data are necessary to delete the application you had installed.

Related subjects

Program characteristics

Program characteristics

Following data will be considered while saving

On all drives will be checked:

All new created directories.

All files which are written into new directories.

All files which are written into existing directories.

All entries which are written into configuration-files.

All entries which have been deleted in configuration-files.

To find out data listed above the system has to be checked two times. Changes will be saved in a mem-file.

Following data will be considered while deleting

On all drives will be changed:

All new directories will be deleted if possible.

All new files be deleted in new and existing directories. Files created after install won't be deleted. These files will probably contain your worthy data.

All new entries will be deleted in configuration-files

All old entries will be added to your configuration-files

Notes

Deleting of directories, files, etc. will only be executed for the selected application

Deleting an application

Meaning

Deleting means: All changes caused by an installed program will be annuled. Saving of these application is assumption.

Proceeding

If you intend to delete an application on your system at first start *CARE4WIN 1.0*. Select the application you want to delete in the listbox and press the button **Delete**.

All changes on your system caused by this application will be revoked.

If you have any problems while deleting an application refer to *messages* -section in this help.

Related subjects

Program characteristics

Messages

Systemrequirements

At least you need a 286 PC with minimum 2 MB free RAM.

