

Table Of Contents

Welcome to ZIP'R Pro For Windows!

[Introduction](#)

[Requirements](#)

[Disclaimer](#)

[Registration](#)

[Technical Support](#)

[Installation](#)

[What Is ZIP'R Pro?](#)

[ZIP'R Pro Features](#)

[Using The ZIP'R Pro Desktop](#)

[Editing Files](#)

Introduction

Thank you for trying ZIP'R Professional For Windows! ZIP'R Pro is a hard drive utility designed to automatically decompress an entire program before it is executed, launch the program, and compress it after it is exited, all accomplished within the Windows environment. This process saves valuable hard drive space by storing programs in compressed form when they are not in use. ZIP'R Pro even achieves a substantial amount of compression on hard drives that already use an on-the-fly compression program, such as Stacker, SuperStor, or DoubleSpace! ZIP'R Pro can use an existing compression program such as PKZIP / PKUNZIP, ARJ, or LHA, or it can use internal compression routines that are compatible with PKZIP 2.0!

If you appreciate ZIP'R Pro For Windows, you are encouraged to call The Bertha BBS at (218) 924-2060, and let us know! Comments, suggestions, and enhancement requests are always welcome!

See Also [Registration](#)

Requirements

To run ZIP'R Pro reliably, you will need the following:

- Windows 3.1 or Higher
- IBM PC, PC-Compatible or MS-DOS Computer with a Hard Drive and 640K RAM
- EGA or VGA Color Monitor Recommended

Disclaimer

By using ZIP'R Professional For Windows, users indicate their acceptance of the following terms:

"ZIP'R Professional For Windows is supplied as is. The author disclaims all warranties, expressed or implied, including, without limitation, the warranties of merchantability and of fitness for any purpose. Neither STSI, The Bertha BBS, or any STSI employees will be held responsible for any damages, direct or consequential, which may result from the use of ZIP'R Professional For Windows."

"Information in this documentation / help file is subject to change without notice and does not represent a commitment on the part of STSI. STSI may make improvements and/or changes in this documentation / help file or in the products and/or programs described in this documentation / help file at any time."

Registration

ZIP'R Pro is distributed under the shareware concept. You may try ZIP'R Pro for a period of two weeks. After this period, you must either discontinue using it, or register it. A single-user license is only \$49.95 (+\$5.00 S&H in the U.S., or \$12.50 S&H on Foreign Orders). This price includes a printed manual, 3 1/2" and 5 1/4" diskettes, along with a Registration Name and Number allowing you to register your copy of ZIP'R Pro.

To register over the telephone, call STSI at (218) 924-2050, and charge it to your Visa, MasterCard, American Express, or Discover credit card. Upon request, you will receive a temporary registration name and number over the telephone that can be used until you receive your actual registration package in the mail. This will allow the modification and/or removal of the prelog delay time, along with any nag screens.

For further registration information and pricing, please read the REGISTER.DOC file included with ZIP'R Pro. There is also a registration form contained at the end of this documentation file.

If you prefer to order through the mail, send your payment to:

Stevenson Technical Services, Inc. (STSI)
108 Second Avenue West
Bertha MN 56437-0297 U.S.A.

Technical Support

Technical support is available to ZIP'R Pro users through the following means:

The Bertha BBS:

New versions of ZIP'R Pro will be posted here as soon as they are available. The Bertha BBS uses a U.S. Robotics Dual-Standard Modem, which is capable of V.32bis, V.32, HST, and 2400 baud connect speeds. The access number for The Bertha BBS is (218)-924-2060. Technical support questions should be addressed to the SYSOP.

STSI FAX:

STSI has a FAX machine on-line 24 hours-a-day to accept FAX transmissions. Technical support questions / problems may be faxed to (218) 924-2050. Most FAX transmissions will be automatically routed to the FAX machine. If you have problems reaching our FAX machine, wait until after the first ring, press 11, and then begin transmitting.

Telephone:

Technical support calls may be placed at (218) 924-2050. Office hours are from 8:00 am - 5:00 pm, Monday thru Friday, and 8:00 am - 11:00 am on Saturday.

Installation

Backup First!

The first step in testing a new piece of software is to perform a backup and test its integrity. Since ZIP'R Pro will compress entire directories into a single file, your potential losses are much greater if this file becomes lost or corrupted.

The Installation Program

Log to the drive where you are installing ZIP'R Pro from, and type "INSTALL". The ZIP'R Pro For Windows installation program (which is a DOS-based install program) will ask you where you are installing ZIP'R Pro from (usually, the current directory), and the location where the program files should be stored. (The default destination directory is C:\ZPROWIN.) If you are upgrading from a previous version, ZIP'R Pro will issue a warning before overwriting the ZPROWIN.INI file. If you have already set up your registration information and user preferences in the ZPROWIN.INI file, answer "N" (No) to instruct ZIP'R Pro not to overwrite this file. When the installation is complete, ZIP'R Pro will display a completion message and return to the operating system. When ZIP'R Pro prompts you for your Windows directory, enter the directory where you normally store any .PIF files that are used for DOS programs under Windows. (This is typically the C:\WINDOWS directory.)

ZIP'R Pro can be installed on any drive in your system, including network drives.

Important!

Be sure to include a SET ZPROWIN=N:\ZPROWIN statement (or wherever you put ZIP'R Pro), in your AUTOEXEC.BAT file. If this environment variable is not found, ZIP'R Pro defaults to using the C:\ZPROWIN sub-directory. (If either of those directories cannot be found on your system, the current directory is used.) Also make sure that you reboot your computer after making this change to your AUTOEXEC.BAT file to ensure that the changes have taken effect.

What Is ZIP'R Pro?

ZIP'R (pronounced "zipper") Pro is a hard drive utility designed to automatically decompress an entire program before it is executed, launch the program, and compress it after it is exited, all accomplished within the Windows environment. This process saves valuable hard drive space by storing programs in compressed form when they are not in use. ZIP'R Pro even achieves a substantial amount of compression on hard drives that already use an on-the-fly compression program, such as Stacker, SuperStor, or DoubleSpace! ZIP'R Pro can use an existing compression program such as PKZIP / PKUNZIP, ARJ, or LHA, or it can use internal compression routines that are compatible with PKZIP 2.0!

ZIP'R Pro Features

ZIP'R Pro For Windows is a spin-off of the popular ZIP'R Pro For DOS product. ZIP'R Pro For Windows contains most of the features found in ZIP'R Pro For DOS. The following list shows some of the features available in ZIP'R Pro For Windows.

- Automatic Compression & Decompression
- Automatic Program Launching
- Query Option (Optional Compression)
- Update Option (Fast Recompression)
- Sorted Extraction (PKUNZIP Only)
- Built-In Compression Routines
- Compression to Floppy Disks (PKZIP Only)
- Store Compression Files On Any Drive/Directory
- Compress/Decompress Only Option
- Automatic Network/Multitasker Detection
- Windowed Compression/Decompression
- Heap Compaction (Eliminates Unnecessary Swapping)
- On-Line Help Available
- Atomic Lock Files Used
- Automatic Cluster Size Detection
- Swap To EMS, XMS, Or Disk Only When Necessary
- Option To Test Archive Integrity
- Selective Extraction / Exclusion

Editing Files

The available editing fields will depend on the interface being used. The interface level determines what features and fields will be available when editing a .ZPW file. For more information, see [User Interface](#).

Beginner, Intermediate, or Advanced

 ZPW Filename
 Executable Filename
 Parameters
 Application Type

Intermediate or Advanced

 Compression Type
 Test Integrity
 Query Option
 Update Option

Advanced Only

 Maximum Users
 Compressed Filename

ZPW Filename

The entry typed in this field will be the name of the .ZPW file used to contain the program preferences entered on this screen. This file will be referenced on the ZIP'R Pro command line to execute this program. This filename should reflect the name of the program being executed. A full path is required.

Executable Filename

This field should contain the full path and filename of the file to be executed. You must add the correct extension of the file you wish to execute. If you specify an incorrect extension, ZIP'R Pro will not be able to find the correct file.

Parameters

This field can optionally contain any necessary parameters that should be passed to the program being executed. Enter all options that should be passed to the executable program in this field.

Maximum Users

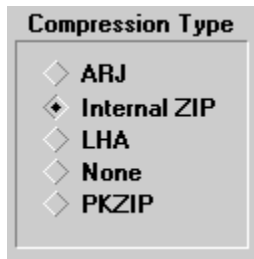
This field should be used to specify the maximum number of concurrent users (or accesses) that should be allowed for this program at the same time. For example, if a network program is only licensed for five users, you will want to enter 5 in this field. This tells ZIP'R Pro not to allow more than 5 users into this particular program at the same time. Under normal Windows operation, you may run the risk of opening multiple sessions of the same program at the same time. It would be to your benefit to enter 1 in this field. That way, ZIP'R Pro will only allow you to execute one copy of this program at a time. The default for this field is 1. (Special Note: The unregistered version of ZIP'R Pro only supports a maximum of 5 concurrent users in one program at the same time. In order to have access for more than 5 users, you must register ZIP'R Pro.)

Compressed Filename

Enter the full path and filename of the compressed file that will be created and used by ZIP'R Pro in this field. After you exit from the chosen program, ZIP'R Pro creates the compressed file in the location specified in this field, along with the filename you specify. When ZIP'R Pro creates the compressed file, it will append a .ZIP extension for files created with PKZIP or Internal ZIP compression, a .ARJ extension for files created with ARJ, or a .LZH extension for files created with LHA.

Note: The compressed file can be created on any drive and in any sub-directory, including floppy diskettes. Common locations for the compressed file include the directory where the program is executed from, a special archive directory on your hard drive, a floppy diskette (only available with PKZIP), or network drive.

Compression Type



Place a check mark next to the name of the compression program you want to use to compress the specified program and its sub-directories. The following compression utilities are currently supported by ZIP'R Pro.

ARJ
Internal ZIP (Built-In Compression Compatible With PKZIP 2.0)
LHA
No Compression
PKZIP

The default entry for this field is "Internal ZIP". If you choose to use ARJ, LHA, or PKZIP, make sure you enter a valid path for the selected program on the [Compression Paths](#) screen available from the Settings menu.

Test Integrity

When Test Integrity is checked, ZIP'R Pro will tell the compression program being used to perform an integrity check on the archived files.

Query Option

The "Query" option is a ZIP'R Pro feature that allows users to choose, after the program is exited, whether or not it should be compressed.

If this box is checked, ZIP'R Pro will query (ask) the user whether or not the program should be compressed each time it is exited. This allows the user to have more control over the compression process, instead of having to decide in advance whether a program should be compressed.

Update Option

(PKZIP and Internal ZIP Compression Only)

The "Update" option is a ZIP'R Pro feature which can significantly reduce the time required to recompress a program. Normally, when ZIP'R Pro decompresses a program, it extracts all of the program files and sub-directories, and deletes the old compressed file. During the compression process, ZIP'R Pro creates a new compressed file, and moves all of the program files and sub-directories into it. This method makes the most efficient use of hard disk space, but can require a significant amount of time to recompress the program, depending on the number and size of files that need to be compressed.

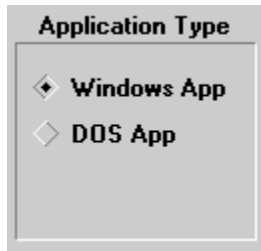
The "Update" option of ZIP'R Pro can save a tremendous amount of time in this process. Instead of deleting the old compressed file when the program files and sub-directories are extracted, ZIP'R Pro leaves it in its original location. When the compression process starts, ZIP'R Pro uses PKZIP to update any files and/or sub-directories that have been added or changed, and deletes any files and/or sub-directories that have been deleted since the program was extracted. In essence, if no files or sub-directories were added, changed, or deleted since the program was decompressed, PKZIP does not need to update any files. The old compressed file is left in the directory while PKZIP deletes the program's files and sub-directories.

Placing a check mark in this box instructs ZIP'R Pro to use the "Update" method when compressing this program. (Note: The "Update" option is only available for PKZIP and Internal ZIP Compression)

The amount of time that can be saved when using the "Update" option varies between programs. I encourage you to try this option on a few of your own programs. Here are a few hints that I've figured out from experimenting with this option.

1. The greatest difference in speed will be noticed on programs that have large files and/or files that have not changed. It takes a very long time to compress large files using the normal compression method. With the update method, if PKZIP detects that these large files are identical to the ones already maintained in the compressed file, all it needs to do is delete these files out of the directory, and the recompression process is complete!
2. You may notice that any lower-level sub-directories within the program are always updated when the update method is enabled. Since directories are deleted when a program is compressed, PKZIP must create these directories before decompressing the program. When PKZIP attempts to update the compressed file, it detects that the directories have "changed", and therefore, is forced to update them in the compressed file.
3. This option is useful to speed up the recompression process on most programs, but it may actually increase the time of compression on others. The programs that may not compress as quickly with the update method are ones that have large numbers of small files and/or ones that have many files added, changed, or deleted during each session. If you're not sure, use a watch and time each method to see which way would save the most time.

Application Type



Select whether the program to be executed is a Windows Application or a DOS Application. ZIP'R Pro For Windows can execute either type of program from the Windows environment.

Advanced Options



Compress / Decompress Program Only (Do Not Execute)
Use Alternate Directory as Program Parent Directory
Program Parent Directory
Use Alternate Directory To Launch Executable Program
Launch Directory
Swapping

Compress / Decompress Program Only (Do Not Execute)

This advanced feature of ZIP'R Pro allows you to specify whether or not ZIP'R Pro should attempt to execute the program file once the program has been decompressed. If this box is checked, ZIP'R Pro will only decompress the program if it is in compressed format, and only compress the program if it is in non-compressed format. This option is potentially dangerous to the novice user. Caution is advised.

Use Alternate Directory as Program Parent Directory

When this box is checked, the Program Parent Directory field is enabled for entering the parent directory for the program being compressed.

See Also [Program Parent Directory](#)

Program Parent Directory

Advanced users will want to use this optional field for programs with unique requirements. While most programs maintain their primary executable file in the parent program directory, some programs maintain their primary executable file in a lower-level sub-directory. A good example of this problem is found with Borland Pascal 7.0.

```
C:\
└─ BP
    └─ PASCAL
        └─ DOC
            └─ BIN
                └─ BGI
                    └─ EXAMPLES
                        └─ RTL
                            └─ UNITS
                                └─ PENWIN
```

Most programs would normally place their executable files in the C:\BP sub-directory. Borland Pascal, however, places the file BP.EXE in the C:\BP\BIN sub-directory. In order to compensate for situations like this, ZIP'R Pro, allows users to specify a parent directory for the program. In the case of Borland Pascal, the Executable File field given on the front screen would contain "C:\BP\BIN\BP.EXE". To compress all files and directories from the main subdirectory (C:\BP and below), the Program Parent Directory field would contain "C:\BP".

Use Alternate Directory To Launch Executable Program

When this box is checked, the Launch Directory field is enabled for entering the directory where the program will be launched, or executed, from.

See Also [Launch Directory](#)

Launch Directory

This field allows users to optionally enter the directory where the selected program will be executed from, if it is a directory other than the one where the program resides. For example, the program Microsoft Works (C:\WORKS\WORKS.EXE) could be executed from a directory such as C:\DOCS. This would allow Microsoft Works to edit files in the C:\DOCS sub-directory without the need to change to that directory from within the program.

Swapping

Program Swapping	Default Swap	Trip Point	640000
IN Commands Swapping	Default Swap	Trip Point	550000
OUT Commands Swapping	Default Swap	Trip Point	450000

The three fields, labeled "Program Swapping", "IN File Swapping", and "OUT File Swapping" allow you to specify when ZIP'R Pro should swap itself to EMS, XMS, or disk. If ZIP'R Pro does not have to swap, execution of the Program, IN Commands, and/or OUT Commands occurs much more rapidly than if swapping is necessary. There are four options available for these fields.

Default Swap

This instructs ZIP'R Pro to use built-in trip points for swapping.

Automatic Swap

This instructs ZIP'R Pro to swap itself to EMS, XMS, or disk ONLY if there is not enough memory available, as specified by the corresponding Trip Point.

Always Swap

This option instructs ZIP'R Pro to always swap itself to EMS, XMS, or disk, no matter how much memory is available. This is the safest method for executing programs and/or DOS commands, although it can consume more time.

Never Swap

This instructs ZIP'R Pro that it should never swap to EMS, XMS, or disk, no matter how much (or how little) memory is actually available. Use this option carefully, as it could cause programs and DOS commands to issue out of memory error messages.

Trip Point

This option allows users to specify the trip point (or memory availability requirement) that should be used for ZIP'R Pro to decide when it should swap itself to EMS, XMS, or disk. The trip point only works when "Automatic Swap" is selected as the swapping type.

Compression Options



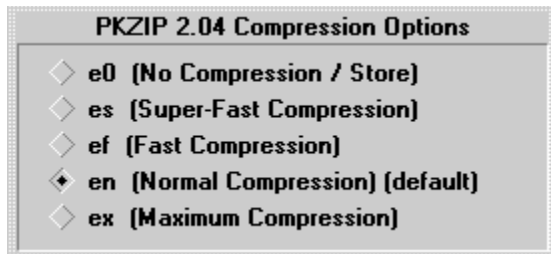
[PKZIP Compression Options](#)

[ARJ Compression Options](#)

[Internal ZIP Compression Options](#)

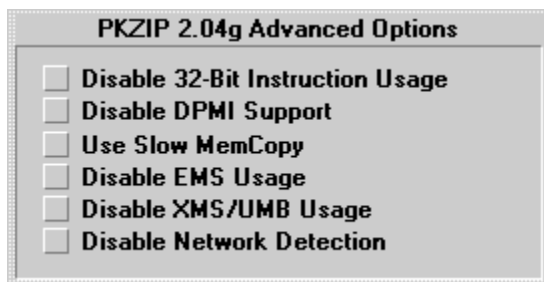
PKZIP Compression Options

These PKZIP / PKUNZIP options may be used to choose less compression in exchange for more speed, or more compression in exchange for less speed.



ZIP -e0 switch (PKZIP 2.0 Only)
ZIP -es switch (PKZIP 1.1 or 2.0)
ZIP -ef switch (PKZIP 2.0 Only)
ZIP -en switch (PKZIP 2.0 Only)
ZIP -ex switch (PKZIP 1.1 or 2.0)

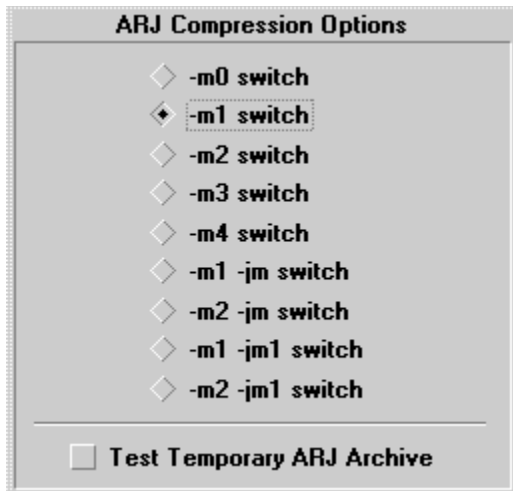
In addition to these options, additional options are available with PKZIP 2.04g to solve specific hardware and software compatibility problems. These options are as follows:



Each of these parameters is explained in the troubleshooting section of the PKZIP documentation. To use any of these options, place a check mark beside the corresponding entry on the Compression Options screen.

ARJ Compression Options

The following compression options are available for people using ARJ.EXE to compress / decompress programs. The default ARJ compression setting is to use the -m1 switch.



Test Temporary Archive

In addition to these options, ARJ allows users to test the temporary archive that is created when compressing files. To do this, place a check mark in the "Test Temporary Archive" check box.

Internal ZIP Compression Options

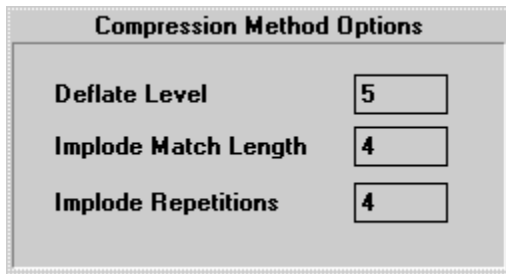
The following compression options are available when using Internal ZIP compression:

Compression Method



When using Internal ZIP, you can specify if files should be compressed using the Deflate, Implode, Shrink, or Store methods, or you can let ZIP'R Pro use the Best method, depending on each file. The best compression ratios can be achieved using the Deflate method, while the least effective is Store, which simply stores the program file inside the .ZIP file without compressing it.

Compression Method Options



Deflate Level

When the deflate compression method is being used by the Internal ZIP compression routines, a deflate level can be specified to improve the overall compression. The range of values is from 1 to 9, with 1 being the least compression, and 9 being the most. The higher this value is set, the more time will be required to compress the program.

Implode Match Length & Implode Repetitions

The implode match length and repetitions settings can be adjusted to improve compression or speed on files that are imploded. The match length must be in the range of 4 to 288, and the repetitions must be in the range of 4 to 960. The default value for both fields is 4. The higher the numbers, the greater the compression will be on imploded files.

Special Options



Use Selective Extraction
Selective Extraction File List
Use Selective Exclusion
Selective Exclusion File List

Use IN Commands
IN Commands
Use OUT Commands
OUT Commands

Use TSR Pre-Program Commands
TSR Pre-Program Commands
Use TSR Post-Program Commands
TSR Post-Program Commands

Use Selective Extraction

(PKUNZIP Only)

When this box is checked, Selective Extraction is turned on, and only the files listed in the Selective Extraction File List will be extracted from the .ZIP file when this program is decompressed. The original .ZIP file is preserved (similar to the process used when Update Option is enabled). After the program is exited, the original .ZIP file is updated with any changes that were made during the current session. When Selective Extraction is enabled, Query Option is ignored, and the Update Option is always used. All multiple-user access features are disabled when using Selective Extraction. Only one user is allowed into a program at a time when Selective Extraction is enabled.

See Also [Selective Extraction File List](#)

Selective Extraction File List

This box contains a list of the files that should be extracted from the .ZIP archive when the program is decompressed. Rather than extracting an entire archive, you can choose to decompress only the files that are needed for program execution. This can dramatically speed up the compression and decompression process. For example, to run the Norton Utilities SFORMAT.EXE, the only files needed are SFORMAT.EXE and NORTON.INI. By entering these two files, PKUNZIP will only extract the two files specified before executing SFORMAT.EXE.

When entering filenames into this file list, wild cards may be used, such as *.EXE, *.DOC, ????.CFG, etc. If a filename is entered that does not exist in the .ZIP file, PKUNZIP.EXE will not attempt to extract it, and it will not issue an error message.

Be very careful when using this option! If you forget to extract a file necessary for proper program execution, your program could terminate unexpectedly or issue error messages.

Use Selective Exclusion

(PKUNZIP Only)

When this box is checked, Selective Exclusion is turned on, and all files listed in the Selective Extraction File List will be excluded from the extraction process when the .ZIP file is decompressed. When Selective Exclusion is enabled, Query Option is ignored, and the Update Option is always used. All multiple-user access features are disabled when using Selective Exclusion. Only one user is allowed into a program at a time when Selective Exclusion is enabled.

See Also [Selective Exclusion File List](#)

Selective Exclusion File List

This box contains a list of the files that should be excluded from the extraction process when the .ZIP archive is decompressed. Rather than extracting an entire archive, you can choose to exclude certain files that are not needed for program execution or operation. This can dramatically speed up the compression and decompression process. For example, most programs do not require *.DOC files to be present in order to run successfully. By entering "*.DOC" into the Selective Exclusion File List, PKUNZIP will not extract these files, saving time during the compression and decompression processes, and disk space while the program is running.

When entering filenames into this file list, wild cards may be used, such as *.EXE, *.DOC, ????.CFG, etc.

Be very careful when using this option! Excluding a file that is necessary for proper program execution could cause your program to terminate unexpectedly or issue error messages. Also remember that if Selective Extraction AND Selective Exclusion are both enabled, Selective Exclusion files take precedence. That means that if PROGRAM.EXE is listed in both file lists, it will always be excluded.

Use IN Commands

When this box is checked, IN Commands are enabled, and any DOS commands listed in the IN Commands memo field will be executed prior to executing the selected program.

See Also [IN Commands](#)

IN Commands

IN Commands are DOS commands that are executed prior to running the selected program. An example of this would be to swap a printer port prior to executing the program. Another example would be to flush and disable write caching before running a disk utility program.

To use this feature, enter any necessary DOS commands that should be executed prior to going "IN" to the program in the corresponding memo field.

Important! Do NOT attempt to invoke or remove TSR (Terminate and Stay- Resident) programs from memory with IN or OUT DOS commands. This is virtually guaranteed to cause conflicts with ZIP'R Pro. If you need to invoke a TSR before running a program, or remove one after exiting a program, see the section on TSR's.

Use OUT Commands

When this box is checked, OUT Commands are enabled, and any DOS commands listed in the OUT Commands memo field will be executed after the selected program has been exited or terminated.

See Also [OUT Commands](#)

OUT Commands

OUT Commands are DOS commands that are executed after exiting the selected program. An example of this would be to swap a printer port back to its original state after exiting from the program. Another example would be to re-enable write caching, if it had been previously disabled using the IN Commands, after exiting from a disk utility program.

To use this feature, enter any necessary DOS commands that should be executed after going "OUT" of the program in the corresponding memo field.

Important! Do NOT attempt to invoke or remove TSR (Terminate and Stay- Resident) programs from memory with IN or OUT DOS commands. This is virtually guaranteed to cause conflicts with ZIP'R Pro. If you need to invoke a TSR before running a program, or remove one after exiting a program, see the section on TSR's.

Use TSR Pre-Program Commands

When this box is checked, TSR Pre-Program Commands are enabled, and any DOS commands listed in the TSR Pre-Program Commands memo field will be executed prior to executing the selected DOS program.

See Also [TSR Pre-Program Commands](#)

TSR Pre-Program Commands

Just like IN Commands, TSR Pre-Program Commands are DOS commands that executed prior to executing the selected DOS program. The main difference is that TSR Pre-Program Commands invoke one or more TSR (Terminate-and-Stay-Resident) programs. TSR's can be a bit tricky to handle due to the fact that ZIP'R Professional cannot tell what memory has been used by any TSR's that load later. But ZIP'R Professional makes TSR's easier to manage by creating a "TSR Container File". This file is simply a temporary batch file that contains commands that surround the command line used to execute the program with the TSR (Pre) and TSR (Post) commands. When the program is executed, this batch file is executed instead of the program, allowing TSR's to load and unload while ZIP'R Professional is dormant. No user intervention is required. ZIP'R Professional automatically creates, and then deletes this temporary batch file. TSR's that can be loaded and unloaded via command line parameters can usually be invoked successfully with this method. The key point to remember is to unload TSR's in the REVERSE order that they were loaded. The following example illustrates this concept more clearly.

TSR (Pre) Commands:

TSR1 (Load)

TSR2 (Load)

TSR (Post) Commands:

TSR2 (Unload)

TSR1 (Unload)

TSR2 must be unloaded first, since it was the last TSR loaded, and is loaded last in memory. Once TSR2 is unloaded, TSR1 may be safely unloaded, because it is now the last TSR in memory.

The important point to remember is that if you load a TSR before executing the program, you MUST unload it after exiting the program. Otherwise, control will not be returned to ZIP'R Pro. When this happens, ZIP'R Pro will not perform the compression process, resulting in several problems. If the Update option was enabled, the compressed file will still be in the compressed file directory, and the program files will still be in the program directory. This could be dangerous, if you don't know what you're doing. It is recommended that you delete the compressed file before attempting to execute the program again. You may also find some files in the \ZPROWIN sub-directory with a .U00 or .P00 extension. If no one else is accessing the program at the time, you should delete them. To avoid such problems as these, either don't load TSR's at all, or make sure that you unload them using the TSR (Post) Commands.

Use TSR Post-Program Commands

When this box is checked, TSR Post-Program Commands are enabled, and any DOS commands listed in the TSR Post-Program Commands memo field will be executed after exiting from, or terminating, the selected DOS program.

See Also [TSR Post-Program Commands](#)

TSR Post-Program Commands

Just like OUT Commands, TSR Post-Program Commands are DOS commands that executed after exiting from, or terminating, the selected DOS program. The main difference is that TSR Post-Program Commands remove one or more TSR (Terminate-and-Stay-Resident) programs from memory. TSR's can be a bit tricky to handle due to the fact that ZIP'R Professional cannot tell what memory has been used by any TSR's that load later. But ZIP'R Professional makes TSR's easier to manage by creating a "TSR Container File". This file is simply a temporary batch file that contains commands that surround the command line used to execute the program with the TSR (Pre) and TSR (Post) commands. When the program is executed, this batch file is executed instead of the program, allowing TSR's to load and unload while ZIP'R Professional is dormant. No user intervention is required. ZIP'R Professional automatically creates, and then deletes this temporary batch file. TSR's that can be loaded and unloaded via command line parameters can usually be invoked successfully with this method. The key point to remember is to unload TSR's in the REVERSE order that they were loaded. The following example illustrates this concept more clearly.

TSR (Pre) Commands : TSR1 (Load)
TSR2 (Load)

TSR (Post) Commands: TSR2 (Unload)
TSR1 (Unload)

TSR2 must be unloaded first, since it was the last TSR loaded, and is loaded last in memory. Once TSR2 is unloaded, TSR1 may be safely unloaded, because it is now the last TSR in memory.

The important point to remember is that if you load a TSR before executing the program, you MUST unload it after exiting the program. Otherwise, control will not be returned to ZIP'R Pro. When this happens, ZIP'R Pro will not perform the compression process, resulting in several problems. If the Update option was enabled, the compressed file will still be in the compressed file directory, and the program files will still be in the program directory. This could be dangerous, if you don't know what you're doing. It is recommended that you delete the compressed file before attempting to execute the program again. You may also find some files in the \ZPROWIN sub-directory with a .U00 or .P00 extension. If no one else is accessing the program at the time, you should delete them. To avoid such problems as these, either don't load TSR's at all, or make sure that you unload them using the TSR (Post) Commands.

Floppy Options

This screen allows users to select options to be invoked when creating a compressed file on a floppy diskette.

Important Note: Options for floppy diskette compression will only work when PKZIP / PKUNZIP is used as the compression program. Also note that the Update option can NOT be used when compression is occurring to floppy diskettes.

One of the following options can be selected as the default when creating a compressed file on a floppy diskette.

Erase All Files and Sub-Directories

Format Destination Diskette (Quick Format)

Format Destination Diskette (Full Format)

Format Low-Density Disk in High-Density Drive (Quick Format)

Format Low-Density Disk in High-Density Drive (Full Format)

For an explanation of these options, see the Backup Guide supplied with PKZIP 2.0.

Use DOS Verify

If you want DOS Verify to be turned on when compressing files to a floppy diskette, place a check mark in the "Use DOS Verify" check box. This adds an extra level of security to make sure that files are created error-free.

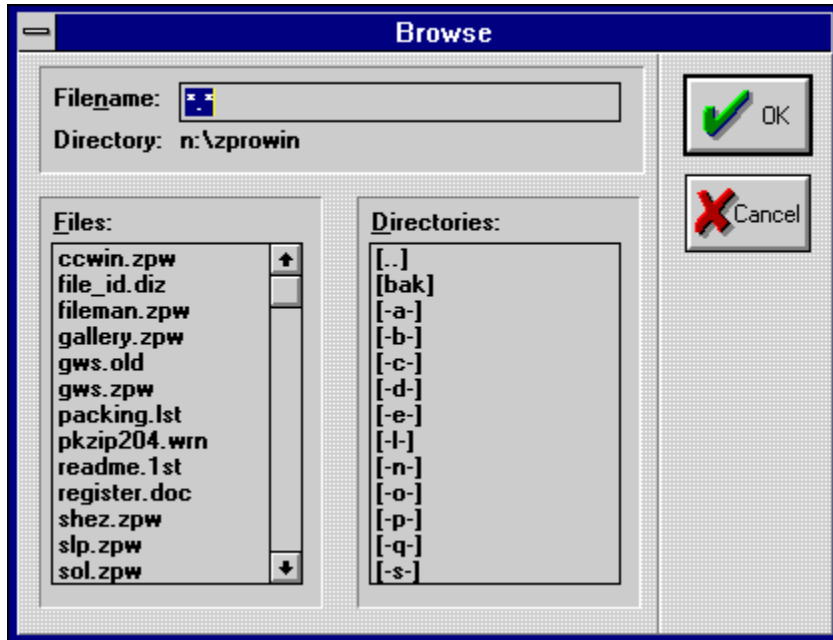
Opening and Deleting Files

Also available from the File Menu is the ability to open or delete a previously created .ZPW file. Use the Open File screen to search through available drives and directories for the .ZPW file you want to edit. Once you've located the file you want to open, double-click on it with the mouse, or press [ENTER] when it is selected with the highlight bar, and ZIP'R Pro will read the information and import it into the editing screen to be viewed or modified.

If you choose "Delete" from the File Menu, a similar dialog box will appear, allowing you to search through available drives and directories for the .ZPW file you want to delete. When you find it, double-clicking on it, or pressing [ENTER] when it is selected with the highlight bar will display a confirmation dialog box to confirm that you want to delete the selected file.

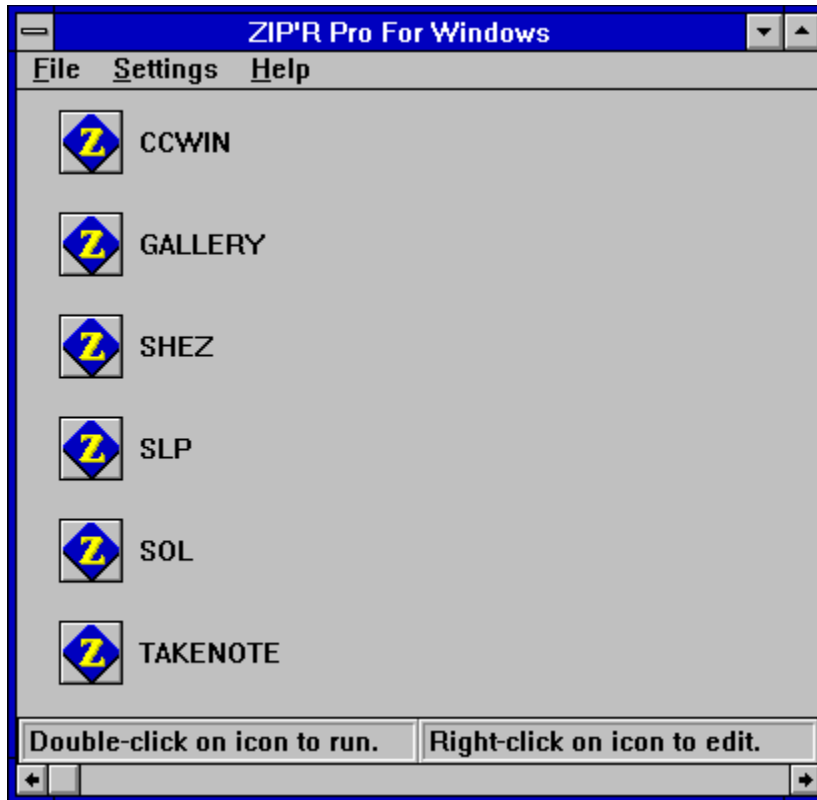
Browse

(Browse for Executable File)



One powerful feature of the ZIP'R Pro is the ability to browse for files using file and directory list boxes. Selecting the "Browse" button will display a file browsing screen to allow you to search for the executable file for the designated program. Once a file is selected from this screen, the drive, directory, and executable file will be automatically pasted into the "Executable File" field.

Using The ZIP'R Pro Desktop



The ZIP'R Pro desktop allows you to create new files, edit existing files, and run programs, all within a single interface. To create a new file, select New from the File menu. To edit an existing file, select Open from the File menu, or position your mouse over an icon and press the right mouse button. Either of these methods will let you edit an existing file. To run a program, double-click on the icon associated with the program you want to run. ZIP'R Pro will decompress the program (if necessary), execute it, and recompress it using the options you specified when you set up the file.

See Also:
[Editing Files](#)

Advanced Options (Defaults)

Advanced Options

Cluster Size Calculation Auto Detect Manual

Cluster Size ▾

AFSC Level ▾

Manual Sub-Directory Creation Under OS/2

Sorted Extraction (PKZIP Only)

Sub-Directory Deletion

Use Atomic Lock Files

Windowed Compression

Windowed Decompression

Cluster Size Calculation

Cluster Size

Accurate File Size Calculation

Manually Create Sub-Directories Under OS/2

Use Atomic Lock Files

Sorted Extraction

Sub-Directory Deletion

Windowed Compression

Windowed Decompression

Cluster Size Calculation

(Auto Detect, Manual)

When ZIP'R Pro uses the Accurate File Size Calculation, it needs to know the size of the allocation unit used on the program's disk drive. By selecting "Auto Detect", you can instruct ZIP'R Pro to automatically detect the true cluster size. If you select "Manual", you can enter the cluster size you want ZIP'R Pro to use when making these calculations. When in doubt, use Auto Detect.

Cluster Size

If the Cluster Size Calculation option is set to "Manual", enter the cluster size that ZIP'R Pro should use for disk space calculations.

Accurate File Size Calculation

(Level 1, Level 2, Level 3, Level 4)

Before ZIP'R Pro is able to decompress a program, it must calculate the amount of disk space that will be required to hold the decompressed program. There are 4 levels of accuracy/speed available. The more accuracy that is desired, the slower the calculation process becomes.

Level 1

If Level 1 is selected, ZIP'R Pro "guesses" at the amount of space required to hold the decompressed program files.

Level 2

If Level 2 is selected, ZIP'R Pro performs a more accurate calculation for the space needed to successfully store the decompressed files. This level is recommended for most users, since the calculation used is fairly accurate, and usually errs on the conservative side.

Level 3

Level 3 uses the same calculation as level 2, but with one difference in the video display. Level 2 views the contents and total size of the archived file by redirecting the output to the screen. Level 3 redirects this output to a file, which takes longer. If you use Level 3, you won't see the archive file contents "flying-by" on the screen, but it will take a bit longer to process it.

Level 4

This is the most complicated (and most time-consuming) method of calculating the space needed for the decompressed files. But, it is EXACT. ZIP'R Pro reads the size of each file from the archive file contents, and uses the Cluster Size to determine exactly how much space a file will consume once it is extracted. This method takes a longer time to complete, but there should be NO DOUBT about whether enough space exists on the hard drive to complete the decompression process successfully.

Manually Create Sub-Directories Under OS/2

Users who are running ZIP'R Pro under OS/2 in combination with Novell NetWare will want to enable this option. Problems have been reported when using PKUNZIP in a global network session, where PKUNZIP cannot create the sub-directories properly during the decompression process. (This problem has been reported to PKWare.) When this option is enabled, ZIP'R Pro will manually create the needed sub-directories before instructing PKUNZIP to decompress the compressed file.

Use Atomic Lock Files

When the network/multitasker features of ZIP'R Pro are being used, users can specify whether or not atomic lock files are used. For a discussion on atomic lock files, see the "Networks / Multitaskers" section of this documentation.

Sorted Extraction

(PKUNZIP Only)

When Sorted Extraction is set to "Yes", ZIP'R Pro will extract files from the .ZIP archive in alphabetical order. This feature is especially useful on network drives that generally prevent utilities of this nature from working. If this option is set to "No", files are extracted in the order in which they appear in the file.

Sub-Directory Deletion

(PKZIP 2.04g Only)

Disabling sub-directory deletion will instruct PKZIP 2.04g not to delete any of the program's sub-directories (located under the parent directory) when compressing a program. The default is On, which means that PKZIP will automatically delete the lower level sub-directories once the compression process is complete.

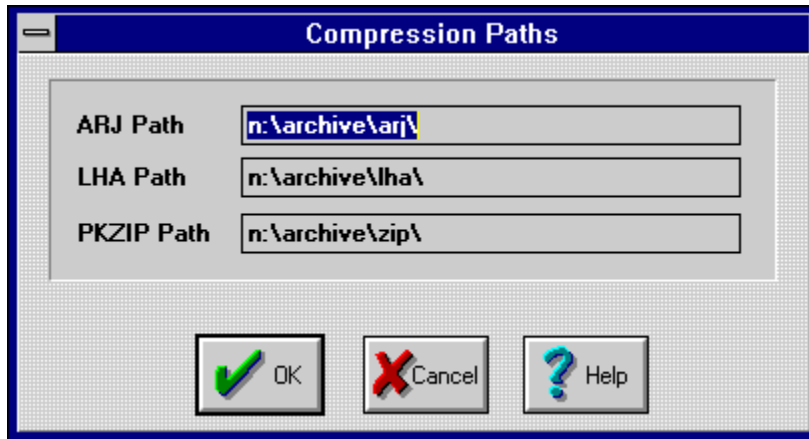
Windowed Compression

When Windowed Compression is set to on, ZIP'R Pro will attempt to execute the program compression process within the limits of a window. Otherwise, program compression will occur on a full DOS screen.

Windowed Decompression

When Windowed Decompression is turned on, ZIP'R Pro will attempt to execute the program decompression process within the limits of a window. Otherwise, program decompression will occur on a full DOS screen.

Compression Paths



ARJ Path

Enter the appropriate path to the file ARJ.EXE in the format "C:\ARJ". Do not add the actual filename or extension. If this field is left blank, or if ZIP'R Pro cannot find ARJ.EXE in the path entered, it will search the ZIP'R Pro sub-directory. If it is still unable to locate ARJ.EXE, it will search the DOS Path. If ARJ.EXE is not located, an error message will be issued.

LHA Path

Enter the appropriate path to the file LHA.EXE in the format "C:\LHA". Do not add the actual filename or extension. If this field is left blank, or if ZIP'R Pro cannot find LHA.EXE in the path entered, it will search the ZIP'R Pro sub-directory. If it is still unable to locate LHA.EXE, it will search the DOS Path. If LHA.EXE is not located, an error message will be issued.

PKZIP Path

Enter the appropriate path to the files PKZIP.EXE and PKUNZIP.EXE in the format "C:\PKZIP". Do not add the actual filename or extension. Both of these files must be located in the same sub-directory. If this field is left blank, or if ZIP'R Pro cannot find either of these two files in the path entered, it will search the ZIP'R Pro sub-directory. If it is still unable to locate them, it will search the DOS Path. If PKZIP.EXE or PKUNZIP.EXE is not located, an error message will be issued.

Delays

Non-registered copies of ZIP'R Pro will ignore any changes on this screen and use the default settings. Registering ZIP'R Pro with the author will allow you to completely remove the prelog pause and delay.

Pause during Prelog

Place a check mark in this box if you want ZIP'R Pro to pause with a "Press Any Key" message when the prelog screen is displayed.

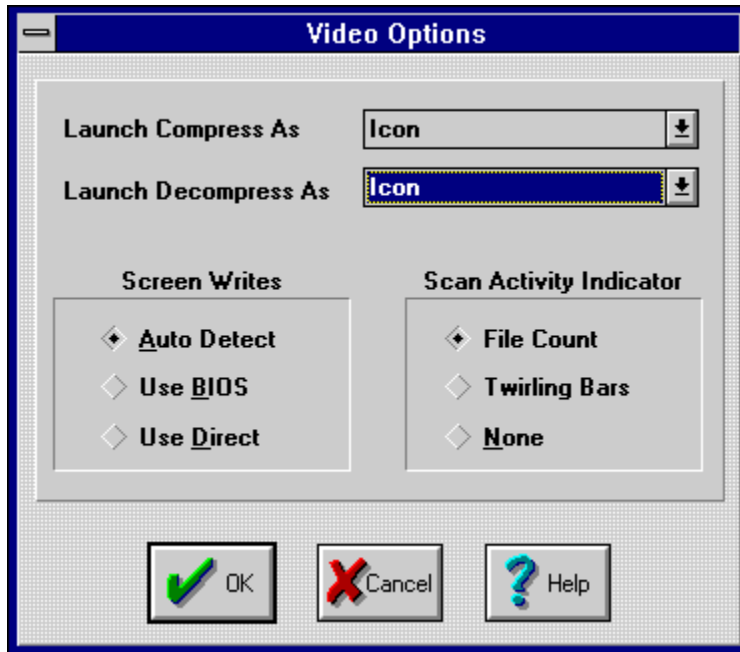
Delay during Prelog

Place a check mark in this box if you want ZIP'R Pro to delay when the prelog screen is displayed. Enter the amount of the delay in the Prelog Delay field.

Prelog Delay

Enter the number of seconds ZIP'R Pro should pause on the prelog screen before ZIP'R Pro attempts to execute the selected program. This field is only valid if the "Delay during Prelog" box has a check mark in it. Experienced ZIP'R Pro users can set this field to 0, which will prevent ZIP'R Pro from displaying the prelog screen. Novice users may want to set this field to 4, to allow a short time to view the information displayed on the prelog screen.

Video Options



Launch Compress As

The Launch Compress As setting allows you to specify how program compression will occur. If you select Icon, compression will occur in a minimized DOS session, allowing you to continue your normal work without monitoring the compression process. Otherwise, if you select "Use zprocess.pif setting", ZIP'R Pro will use the setting defined in the file ZPROCESS.PIF which was transferred to your \WINDOWS directory during the installation process.

Launch Decompress As

The Launch Decompress As setting allows you to specify how program decompression will occur. If you select Icon, decompression will occur in a minimized DOS session, allowing you to continue your normal work without monitoring the decompression process. Otherwise, if you select "Use zprocess.pif setting", ZIP'R Pro will use the setting defined in the file ZPROCESS.PIF which was transferred to your \WINDOWS directory during the installation process.

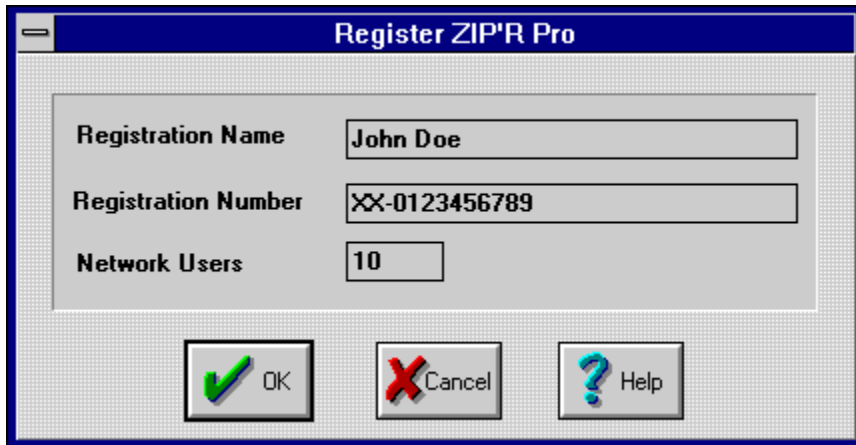
Screen Writes

This option allows you to specify whether ZIP'R Pro should write information to the screen using BIOS or Direct. The default is Auto Detect.

Scan Activity Indicator

The scan activity indicator is a small display that occurs on the top of the compression screen when ZIP'R Pro is scanning for added or deleted files. If File Count is selected, ZIP'R Pro will display the number of the current file that it is checking as it proceeds through the file list. If Twirling Bars is selected, a pair of twirling bars will spin, letting you know that there is continued activity on the part of ZIP'R Pro. Select None if you do not want either of these two options displayed. (Note: This process has been speeded up significantly from the original ZIP'R, and in most cases, you probably won't notice this indicator. It is most useful on extremely large archives with many files.)

Register ZIP'R Pro



Registration Name: John Doe

Registration Number: XX-0123456789

Network Users: 10

Buttons: OK, Cancel, Help

Registration Name

If you are a registered user of ZIP'R Pro, enter your registration name in the Registration Name field. The Registration Name cannot be longer than 36 characters. If you are not a registered user, please read the "Registration Terms" section below.

Registration Number

If you are a registered user of ZIP'R Pro, enter your registration number in the Registration Number field. If you are not a registered user, please read the "Registration Terms" section below.

Network Users

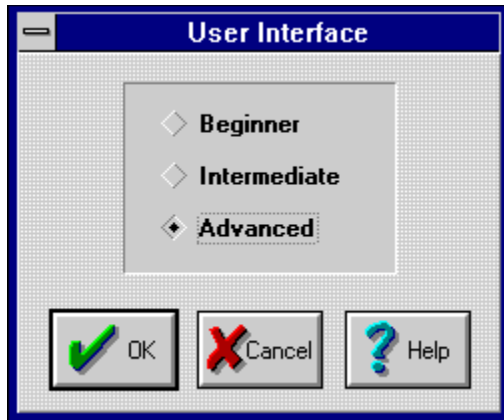
When you register ZIP'R Pro for a network license, you will receive a registration code that supports a specific number of network users. In order for your registration code to work properly, you must enter the exact number of stations your network license is registered for. If you are not using ZIP'R Pro on a network, simply leave this field blank.

Registration Terms

ZIP'R Pro For Windows is shareware. You may try ZIP'R Pro for a period of two weeks. If you continue using ZIP'R Pro after the initial two week period, you must register it. Standard registration is only \$49.95 (+ \$5.00 S&H). Registered users will receive the newest version of ZIP'R Pro on diskette, along with a printed manual, and a registration number. To register, call (218) 924-2050. We accept Visa, MasterCard, American Express, and Discover, as well as personal checks and money orders. (Checks / money orders must be in U.S. Funds drawn on a U.S. Bank!) If you wish to register by mail, print out the order form entitled REGISTER.DOC, and send it to:

Stevenson Technical Services, Inc.
108 Second Avenue West
Bertha MN 56437-0297 U.S.A.

User Interface



One of the most useful features of ZIP'R Pro is the ability to specify a user interface. The user interface level determines what features will be available when editing a .ZPW file and modifying the default settings for ZIP'R Pro.

Here's a general overview of the benefits of each of the user interface levels:

Beginner

The Beginner interface is for novice users who want to be sheltered from all of the complexities of ZIP'R Pro. With the Beginner level, users can simply enter the name of the .ZPW file being created, the executable program, and any needed parameters. All advanced options are hidden from view, making ZIP'R Pro less intimidating. When Beginner is selected, Internal ZIP compression is used on programs, meaning that no outside programs are needed to operate ZIP'R Pro.

Intermediate

The Intermediate interface is for users who want to use an external compression program, such as ARJ, LHA, or PKZIP, or who want to specify the settings for the Test Integrity, Query Option, or Update Option fields. While these options are hidden from view on the Beginner level interface, these options are accessible to intermediate users.

Advanced

The Advanced interface is for users who want to have access to all of the features available in ZIP'R Pro. All of the desired "bells and whistles" can be accessed when using the Advanced interface. This includes Selective Extraction and Exclusion, IN and OUT commands, TSR commands, Advanced Options, Compression Options, and Floppy Compression Options. Advanced users can specify the name and location of the compressed file, storing it on any available drive and directory.

The user interface level can be changed at any time. Beginner users can step up to an intermediate or advanced interface, and advanced users can step down to an intermediate or beginner interface. Files created within one interface can be opened using another interface. This will not affect the integrity of the .ZPW file being edited.

