

Contents

Anim8or

- [Introduction](#)
- [Basics](#)
- [Object Editor Basics](#)
- [Object Point Editor](#)
- [Figure Editor](#)
- [Sequence Editor](#)
- [Scene Editor](#)
- [Animations](#)
- [Materials](#)
- [Troubleshooting](#)

Basics

- [Mouse Usage](#)
- [Where's Undo?](#)
- [Toolbars and Menus](#)
- [Common Button Meanings](#)
- [Top Toolbar](#)
- [Keyboard Shortcuts](#)
- [Arc Rotate](#)
- [Grid Control](#)
- [Material Editor Basics](#)
- [Visual Quality](#)
- [Saving Images, Object Libraries](#)
- [Printing](#)
- [Configuration](#)

Object Editor Basics

- [Object Editor](#)
- [Object/Edit Operations](#)
- [Basic Objects](#)
- [Mesh vs. Parametric Objects](#)
- [Object Materials](#)
- [Splines](#)
- [True Type Fonts](#)
- [Filling](#)
- [Extruding](#)
- [Extruding Text](#)
- [Lathing](#)
- [Modifiers](#)
- [Mirroring](#)
- [Subdivision](#)
- [Subdivision Objects](#)

Object Point Editor

- [Object Point Editor](#)
- [Point Editing](#)
- [Edge Editing](#)
- [Face Editing](#)

[Applying Multiple Materials](#)
[Adding Points and Edges](#)
[Adding Faces](#)
[Connecting Meshes](#)
[Merging Points](#)
[Point and Line Parameters](#)
[Face Extrusion and Manipulation Tools](#)
[Face Editing Commands](#)

Figure Editor

[Figure Editor](#)
[Figure Basics](#)
[Figure/Edit Operations](#)
[Building a Skeleton](#)
[Flexible Joints](#)
[Adding Body Parts](#)
[Skinning](#)

Sequence Editor

[Sequence Editor](#)
[Time Track](#)
[Sequence Basics](#)
[Edit Operations](#)
[Visibility, Animate Button](#)
[What is a Key?](#)
[Making a Key Pose](#)
[Editing Key Frames](#)
[A Circle Has 720 Degrees](#)
[Making a Sequence](#)

Scene Editor

[Scene Editor](#)
[Elements of a Scene](#)
[Adding Objects and Figures](#)
[The Camera, Targets](#)
[Lights](#)
[Object Properties Dialog](#)
[Light Properties Dialog](#)
[Shadows](#)
[Environment Settings](#)
[Scene Time Track](#)
[Previewing Images, Rendering AVI](#)
[The Alpha Channel](#)

Animations

[Animation](#)
[Animation with Key Frames](#)
[Animating Figures with Sequences](#)
[Controllers](#)
[Editing Keys](#)
[Editing Segments](#)

Materials

[Materials](#)

[Material Editor](#)

[Material Settings](#)

[Texture Selector](#)

[Advanced Textures](#)

[Texture Mode](#)

Troubleshooting

[Make .x Files](#)

[Particles](#)

[wglMakeCurrent\(\) Failed](#)

[Viewports Don't Draw Correctly](#)

[Voodoo Graphic Card Problems](#)

[Missing Textures](#)

[Saved .an8 File Won't Load](#)

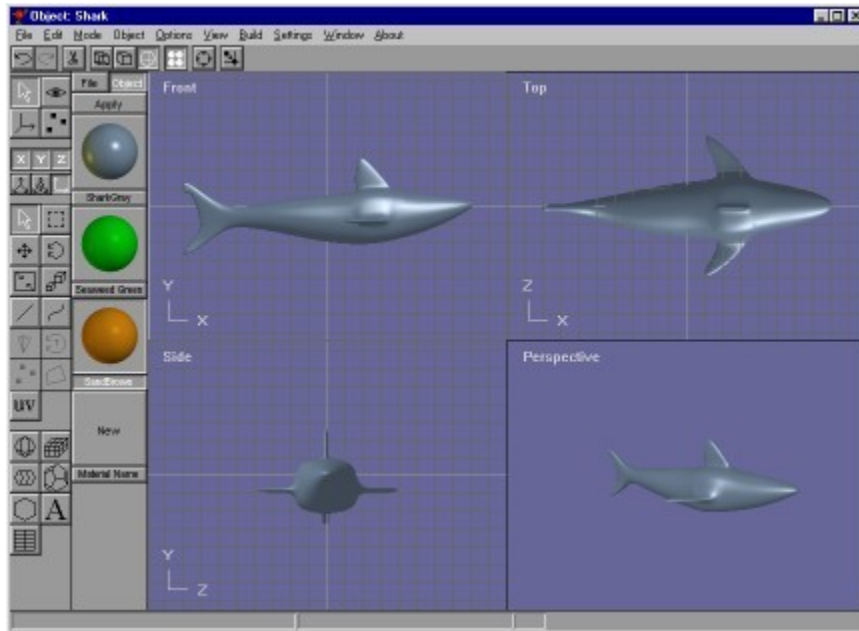
[Transparent Object Not Transparent](#)

[Making AVI File Problems](#)

Anim8or © 2002 R. Steven Glanville

Introduction

Anim8or is a 3D computer animation program that is designed to allow straightforward creation of animations. You interactively create and edit objects, figures, and scenes directly on the computer's screen. The basic interface is similar to most 3D animation and CAD programs, as shown in the following screen shot:



You control various aspects of your work using an ordinary computer mouse or tablet. You select and drag, rotate, scale and place objects by clicking in the various views of your work. There are two toolbars that you can use for common tasks. The one at the top of the window has buttons for general commands that are used throughout Anim8or, while the one on the left allows you to change your mode of operation for common tasks in the current object that you are using. The usual menu is there for less frequently used tasks.

You can control the view of your objects to see how they appear from the *front*, *side*, *top*, *perspective*, etc., and you can show either multiple views or a single view on your screen.

There are four main working modes, and an object-browsing mode. First, there is an *object editor* that is used to build (mostly) static objects.

Second, there is a *figure* or *character editor*. You use it to define the structure of a character that you want to animate by connecting jointed *bones* together, and objects to them. You can give each joint different ways in which they are allowed to move and restrict the range, just like your elbow or shoulder can move only in certain ways.

Third, there is a movement or *sequence editor*. Here you can define segments of motion as one cycle of a walk. These can then be linked together in chains in the scene editor for longer sequences.

Fourth, you put together your final scenes in a *scene editor*. Here you place the objects and built in the other parts of Anim8or into their final 'world'. You can control how they move,

and where the *camera* is located. You can also give the scene various kinds of *lights*.

Once you have created a model or scene you can render high quality .jpg and .bmp images and .avi movies and save them to disk for later use.

Finally, there is an *object browser* to help you view and organize your Anim8or objects. You can also search your disk for objects in other formats.

Related topics

■ [Common Button Meanings](#)

■ [Object Editor](#)

■ [Figure Editor](#)

■ [Sequence Editor](#)

■ [Scene Editor](#)

Mouse Usage

Anim8or requires the use of a mouse with two buttons. You use the left one most of the time to select, move, and change objects. When you are selecting things, the *left* button always deselects everything beforehand, so that only a *single item* remains selected. The *right* button, on the other hand, allows you to select *multiple items* by adding newly selected items to those already so. As of version 0.7 you can use the *middle* button to *deselect* the selection of anything. If you don't have a middle button, press and hold the *alt* key and the right button can be used for these functions instead.

When moving, rotating, or non-uniformly scaling something, the left button changes the X and Y-axes. Moving to the left or right affect the X-axis, and up and down the Y. The right button changes the Z-axis.

You can often *double click* on something to bring up an edit dialog for that item.

Related topics

■ [Common Button Meanings](#)

■ [Arc Rotate](#)

Where's Undo?

As of version 0.7, Anim8or has a complete *undo* command for the Object, Figure, Sequence and Scene Editors. As long as you stay in either Editor you can undo and *redo* multiple editing commands. A history is kept of as many changes as can fit in the undo buffer, about 1 MB of memory. So unless you're editing large models, you will be able to undo more than one operation.

You use the Edit->Undo and Edit->Redo menu commands to apply undo's and redo's. Or you can use the keyboard shortcuts of Ctrl-Z and Ctrl-Y.

As an alternate to Undo, you can still use the original (rather simplistic, and to some people annoying) substitute. When you are dragging a mouse in the main window to change something, say an object's orientation, and you think "Oops! I didn't want to do that!" just keep on dragging the mouse until it's outside the active view window and release the button. This will cancel the operation.

Still, when using this and any other computer program, I still offer the same advice: "Save Early, Save Often!". And don't always save to the same file. Keep a recent backup handy.

Related topics

■ [Top Toolbar](#)

Toolbars and Menus



Here is a portion of a typical toolbar. It has several sections in it that control different aspects of its behavior. The first thing that you will notice is that markings on some of the buttons are in White, some are in Black, and a few are in Gray. The white ones indicate that the associated mode or option is currently selected or in effect. The black ones indicate a state that is not selected. The gray buttons show options that are not currently available.

The top group of buttons on each toolbar act as a radio set indicating the current editing mode of the active view. When you click on any one of them, it becomes highlighted and that mode is selected. All of the others are deselected. The meanings of the various buttons in this group, and the other common buttons, are described below.

Tool Tips

You can turn tool tips on with the Options->Tool Tips menu command. Then if you pause the mouse cursor over a toolbar button its function will be shown in the status bar.

Related topics

■ [Common Button Meanings](#)

Common Button Meanings

The topmost group can have up to 4 buttons in it. When you click on one it set the indicated mode, and changes the lower part of the toolbar to show the functions that are present in your new mode. The different modes are:



This button indicates that you are in the most basic select-and-edit mode for the editor that you are currently using. You will use it for most operations, such as selecting things and common editing actions.



This button is used for changing your view or views of your workspace. With it you can pan, zoom, tilt, and scale each view independently.



In this mode you can move and rotate the pivot for objects in your workspace. A pivot is the point and orientation that are used when you scale and rotate each object.



You use this button to move into point edit mode. It allows you to add, move, and modify individual points, edges, and faces on editable mesh objects.



The next row of three small buttons shows the three axis of the 3D world. They indicate which axes are "unlocked", allowing you to move and rotate things in each direction. You can individually select or deselect them, and thus restrict the movement of objects that you are changing.



Below these buttons you will find three more small buttons that form a radio group. They show the current coordinate system you are using. You can use use *world*, *object* or *screen* coordinates when you manipulate things.

You will find that there are several common toolbar buttons that have the same or similar meanings in more than one editing mode. They are described next.



You use the arrow button to select individual components. When you click on an object using the left mouse button, you select it and deselect any previously selected objects. When you use the right mouse button, you leave any currently selected objects selected, and select additional ones.



With this button you can click and drag to show the corners of a selection rectangle. Any and all objects that fall within that area are then selected. Again, the left mouse deselects any previously selection items, while the right mouse does not.



This is the move function. You set it when you want to move your objects around on the screen. When you press the left mouse button within a view window you can drag anything that is currently selected in the X and Y directions by moving the mouse to the left and right, or up and down. The objects will move along with your mouse. Similarly, the right mouse button will move them along the Z-axis, which is usually into the screen.



This is the rotate button, used for rotating things. When you click and drag the left mouse button, any selected objects will rotate around the X and Y-axes along with your mouse. You can use the right button to rotate them around the Z-axis.



This is the non-uniform scaling button. With it you can scale most objects independently in the X any Y directions using the left mouse button, and in the Z direction with the right mouse button.



This button scales objects in all dimensions simultaneously.



There is also a VCR style set of buttons for controlling the playback of your animations. You use its buttons in the same manner as those on a standard VCR or tape player.

Related topics

■ [Toolbars and Menus](#)

■ [Object/Edit Operations](#)

Top Toolbar

This is a toolbar that's at the top of the window. You can use for several tasks common throughout Anim8or.



The buttons on the top toolbar do the following things:



Undo - If this button is enabled you can use it to undo the most recent edit command.



Redo - Reapply a command that you have un-done.



Cut - Deletes any selected components.



Wireframe - Changes the working views of your object to Wireframe.



Flat - Changes the views to Flat or Faceted.



Smooth - View objects as smooth.



Material - Toggles the Material toolbar.



Arc Rotate - Enables the Arc Rotate tool. You can easily pan, zoom, and rotate any view with Arc Rotate. It is described in detail later on in this chapter.



Grid Snap - You can toggle Snap to Grid mode with this button.

Related topics

■ [Grid Control](#)

■ Arc Rotate

■ Materials

Keyboard Shortcuts

You can use keyboard shortcuts for several common operations. Some are shortcuts for menu commands, and they are shown to the right of the command name in the menu.

- *Ctrl-X* - Cut any selected objects and copy to the Anim8or clipboard.
- *Ctrl-C* - Copy any selected objects onto the Anim8or clipboard.
- *Ctrl-V* - Paste Anim8or objects from the clipboard into the current object.
- *Ctrl-A* - Select all objects in the current view.
- *Ctrl-Z* - Undo the last editing command.
- *Ctrl-Y* - Reapply an Undo command.
- *Ctrl-W* - Wireframe view. Show objects as lines instead of solids.
- *Ctrl-F* - Show objects as Filled instead of as a wireframe made out of lines.
- *Ctrl-R* - Enter and leave Arc Rotate mode.

- *1* - Convert multiple working views to a single large view.
- *4* - Split the screen into 4 different views.
- *A* - Change into Select mode.
- *D* - Change into Drag Select mode.
- *M* - Change into Move mode.
- *N* - Change into Non-uniform Scale mode.
- *R* - Change into Rotate mode.
- *S* - Change into Scale mode.
- *Delete* - This key deletes the currently selected items.
- *Esc* - The Escape key stops along Scene from rendering.

■ *Ctrl-Shift* - Temporarily change into *select mode*. This allows you to quickly select a new object by pressing the Control and Shift keys simultaneously and clicking on the object, and return to your previous mode when you release the keys.

■ *Arrow Keys* - You can use the arrow keys to move, rotate, and scale objects by small amounts in the Object editor, and advance the view by one frame in the Sequence and Scene editors.

■ *Alt* - When pressed and held before using the *right mouse button*, it simulates a middle mouse button.

Related topics

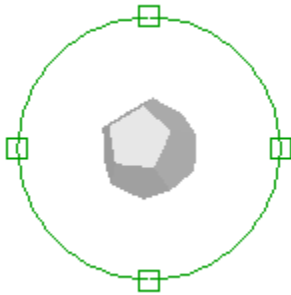
■ [Top Toolbar](#)

■ [Arc Rotate](#)

■ [Common Button Meanings](#)

■ [Mouse Usage](#)

Arc Rotate



■ When you press the *Arc Rotate* button in the top toolbar Anim8or displays a special overlay over the focus window. You can then use the mouse to pan, scale and rotate your view. It may take you a try or two to get used to how it works, but once you have it can save you a lot of time over other methods.

To the right is a view of the arc rotate screen. There are six different regions on the screen, separated by the green overlay: the inner, outer, top and bottom, and left and right. Each behaves differently when you click your mouse in them, and each mouse button controls a different function.

■ Left button - Rotate the view. Clicking in the center rotates it around the X and Y-axis. The outer region rotates around the Z-axis. Clicking inside one of the four little squares rotates in the X-axis (for the top and bottom) or the Y-axis (for the left and right) only.

■ Right button - Move the view. The center area moves your view left and right, and the outer region moves into and out of the screen. You may not see any change when moving into the screen in orthogonal views but they will be apparent in a perspective view.

■ Middle button - Scale the view. The different areas all behave the same when you are scaling a view. Note: If you have a two-button mouse you can press and hold the Alt key and your right button will act like the middle button.

Related topics

■ [Common Button Meanings](#)

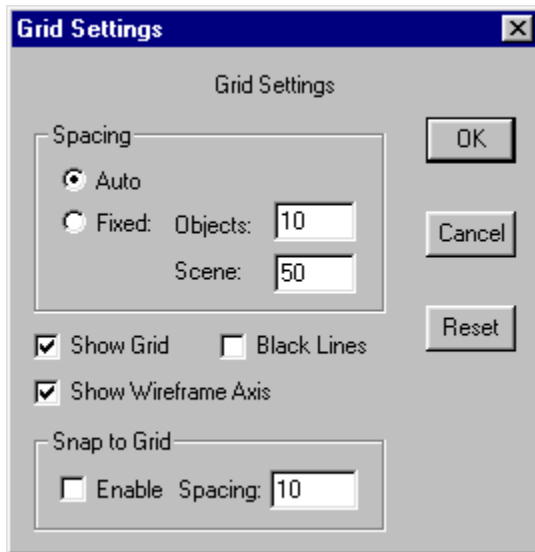
■ [Object Editor](#)

■ [Figure Editor](#)

■ Sequence Basics

Grid Control

You can set the size of the *background grid* used in the editing views, or you can let Anim8or pick a default size that changes with how much you zoom the view so that it always shows a reasonable number of grid lines. Use the Options->Grid command to show the grid dialog:



There are two grid sizes that you can set. One is used in the Object, Figure, and Sequence Editors, and the other is used in the Scene Editor.

You can also set *snap-to-grid* for the Object editor by checking the Enable box in the Snap to Grid section, or with the `snap to grid` button in the top toolbar. This will position objects you move at locations on a grid, making it easy to align them.

Snap-to-grid also controls the size and rotation for many operations to give you more control on other aspects of modeling. You set the size of the grid snap in the Spacing entry.

Related topics

- [Common Button Meanings](#)
- [Basic Objects](#)
- [Splines](#)
- [Adding Points and Edges](#)
- [Face Extrusion and Manipulation Tools](#)

Material Editor Basics



The material editor is used whenever you need to design the color, texture, transparency, and other visual properties of an objects appearance. An example is shown below.

Materials are a complex topic. This dialog has are several sub-dialogs for certain function. There is an entire chapter devoted to describing how to use the Material dialogs.

Related topics

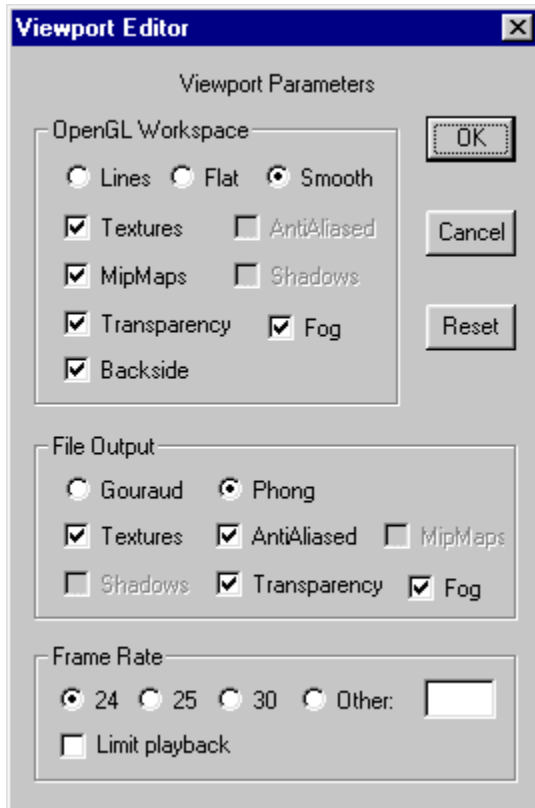


[Materials](#)



[Material Editor](#)

Visual Quality

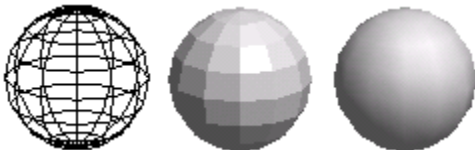


You can control the quality of the images shown when you edit, as well as the quality of the images output to files. These are controlled through the Viewport Parameters dialog that is found under the View->Preferences menu. It looks like:

OpenGL Workspace

This section controls the appearance of your interactive workspace. You can view your objects as *wireframe* models, as *flat* faceted solid objects, or as *smooth* shaded solid objects.

Most graphics cards display smooth shaded images at the same speed as flat shaded ones, so you might think that flat shading wouldn't be very useful. But it is sometimes helpful to see individual facets on a model.



Texturing, and mipmaps, can sometimes slow the response of your computer, so use the check boxes to enable or disable them as you see fit. Also, texturing can hide the structure of your models, so you don't always want to see it.

You can add a general fog to Anim8or Scenes. Objects beyond a certain distance gradually fade into the color of the fog. Fog is only visible in the camera view of the Scene editor.

File Output

This section controls the appearance of your interactive workspace. File images are rendered using a software renderer instead of an OpenGL accelerator, so the speed of your file renderings can be effected quite severely by the settings that you choose.

Gouraud shading is faster than Phong, but isn't nearly as good at showing highlights. Similarly, anti-aliasing helps to remove jaggies but takes several times longer to do.

Frame Rate

The last area, Frame Rate, sets the number images used to make one second of animation. All .avi file output is generated with this frame rate. If you check the Limit Playback box, then Anim8or will limit the rate it plays animations in the Sequence and Scene Editors. Otherwise they will be played at the fastest possible speed.

Related topics

■ [Top Toolbar](#)

■ [Material Editor](#)

■ [Texture Selector](#)

■ [Environment Settings](#)

Saving Images, Object Libraries

Anim8or Object Libraries

You can use any *Anim8or* .an8 project file as a library. Objects, Figures, Sequences, and Scenes can all be imported to another Anim8or project with the Object->Import, Figure->Import, etc. menu commands. You can also export individual Objects and such with similar Object->Export commands.

Saving Images as .jpg and .bmp Files

You can make a quick preview image of any view that you are working on with the File->RenderPreview command. You can also save this image to a .jpg or .bmp file, or print it, from within this command.

Related topics

■ [Configuration](#)

■ [Basic Objects](#)

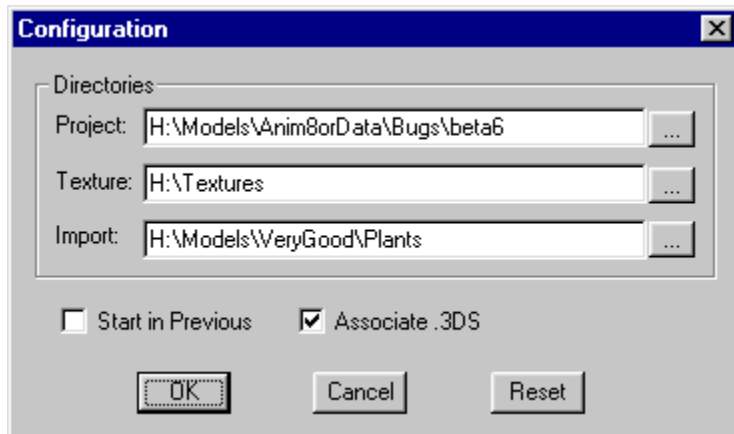
■ [Saved .an8 File Won't Load](#)

Printing

Anim8or has the usual Print and Print Preview options in the File menu. But it offers one additional level of control of your printed images, by letting you control the size and other properties of the bitmap image used in printing. It is not at all uncommon for a color printer to have a resolution of 1440 by 720 dpi. But generating an 8.5" by 11" image at this resolution is not practical! Instead Anim8or uses a default size of 1024x768 which you can adjust to suit your needs.

Configuration

Anim8or keeps track of 3 base working directories. One is used to store Anim8or project files (.an8) and the others are the default directories for keeping Textures and importing and exporting objects. You set these directories with Configuration dialog through the File->Configure command:



When you load or save a project file Anim8or uses the project directory as the initial default. You can change this directory in the Configuration dialog.

When you load a project file, Anim8or looks for texture files in three directories. First it looks in the same directory as the .an8 file. If that fails it tries the Texture directory set in the Configuration dialog. As a last resort Anim8or uses the full path name stored in the project file, which is where the texture file was initially found.

The import directory is simply the default place for importing and exporting files of any format.

You can have Anim8or automatically load the last project you were using by checking the Start if Previous box.

If you check the Associate .3DS box then you will be able to start Anim8or by double clicking on .3ds files in Windows.

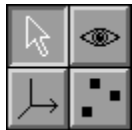
Related topics

■ [Saving Images, Object Libraries](#)

Object Editor

The object editor is where you create and modify new 3D objects. You enter the object editor by default when you run Anim8or. You can enter it at any time by selecting Mode->Object in the menu.

The basic screen is shown below. On the left is a toolbar. It has icons that represent the most common operations that you will be doing. It allows you use to change the mode that you are working in, add basic primitives, etc. You use the menu at the top of the screen performs less commonly needed actions.



The object editor has four modes: *edit*, *viewpoint*, *axis*, and *point edit*. You change the mode you are currently working in by clicking one of the topmost four buttons on the toolbar. This will also change the lower part of the toolbar to display buttons appropriate for that mode:



Object/Edit mode. This is the initial mode that the object editor starts in.



Object/Viewpoint mode allows you to pan, scale, rotate, and size-to-fit any or all of your views of your workspace.



Object/Axis mode lets you move an objects pivot or origin.



Object/Point Edit mode allows you to manipulate individual or groups of points, edges, and faces.

Related topics

■ [Common Button Meanings](#)

■ [Object/Edit Operations](#)

■ [Basic Objects](#)

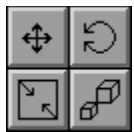
Object/Edit Operations



In Object/Edit mode there are some buttons just below the six small buttons on the toolbar that you use to manipulate components of your objects. Your actions only affect the selected parts of an object.



You can *select* something by clicking on it when you are in select mode. This button puts you in select mode. You can temporarily switch to select mode at any time by pressing the Control and Shift keys. You can also select components by dragging a rectangle around them in *drag-select* mode.



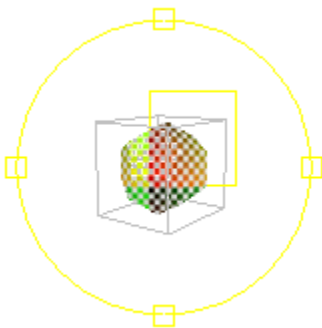
These buttons allow you to move, rotate, scale non-uniformly, and scale the selected components with your mouse.



You can also add and edit splines by adding *straight* and *curved* segments. Splines are also sometimes called paths since they can be used as a path for motion.



UV texture coordinate editing tool. You use this tool to interactively apply texture coordinates to selected objects. It adds an overlay to the screen that is similar to the arc-rotate tool used for changing your viewpoint but for textures.



The yellow square represents a texture's basic size. You can move the texture around on your objects with the right mouse button, and you can rotate its orientation with then left button. The middle button scales textures. Remember if you don't have a middle button you can hold the Alt key down and use the right button instead.

Related topics

■ Common Button Meanings

■ Splines

■ Arc Rotate

■ Material Editor

Basic Objects

You can add new objects to Anim8or in two ways. The first is to *import* meshes for the 3ds, lwo, and obj file formats. You use the object->import menu item to do this. The second way is to start with one or more built in primitives. The lower part of the Object/Edit toolbar has several icons for adding new primitives.



This button allows you add *spheres* to an object. First click on it. Then move the mouse to where you want the sphere to be added. Click and drag to create a sphere of the size you desire. If you want to add several spheres, use the right mouse button. Using the left button returns to select mode after adding a single object. Double clicking on the sphere brings up a dialog where you can change the sphere's properties from the default.



This button adds *blocks*. You can divide them into as many subdivisions in each axis as you like by double clicking on a block to view its properties dialog.



This button adds *cylinders*. You can taper them, leave the ends open or closed, and set the number of divisions used to make them in their properties dialog.



Add various *mesh* solids and other built-in solids with this button. You can set the current solid type using the build->primitives menu.



This button adds *unfilled polygons* to an object. They are built as an editable spline so you can make a lot different shapes starting with the right polygon. Spline can be filled, extruded, lathed, edited, etc.

To set the number of sides, use the build->primitives->n-gon menu item.



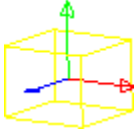
You create *True Type* text objects with this button. Just click somewhere in a window and start typing. If you want to change the properties, double click on the object. You can use any font and style.

Each letter is a single spline (possible with multiple parts, like the hole in an O), and the whole string of characters is grouped together. You can extrude text objects directly using the Build->Extrude menu item. You can also convert a text object into a group of general-purpose splines using the Build->Convert to Spline menu item.



This is the *modifier* button. Use it to add modifiers, which can bend, stretch, warp and twist another object into many new shapes. Modifiers are covered more fully in a later section of this chapter.

Each object in Anim8or has its own coordinate system. Its pivot is located origin. When you scale or rotate an object it is done using the pivot. When you are in wire frame mode, the pivots of selected objects are shown as red-green-blue axes as in:



You can move and rotate pivots by using Pivot Edit mode.

Related topics

■ [Mesh vs. Parametric Objects](#)

■ [Extruding Text](#)

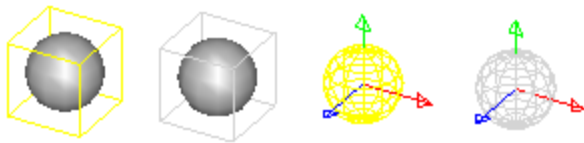
■ [Modifiers](#)

Mesh vs. Parametric Objects

There are two kinds of components in an Anim8or object, *parametric* and *mesh*. Parametric components are defined by a small set of numeric values. These values are used to build a viewable mesh whenever they are displayed. You can edit these parameters by double clicking on a parametric component, which will generate a new mesh for display. But you cannot modify the mesh directly. Some parametric components are the sphere and cylinders described in the previous section.

Meshes however can be fully edited, smoothed, etc., even at the point or face level. You can convert parametric components into meshes with the Build->Convert to Mesh menu item.

It is easy to see if an object is a mesh or not by selecting it. In a filled view selected parametric components are enclosed in *Yellow* bounding box and meshes in *White* ones. In a wireframe view parametric components are shown in yellow lines and meshes in white or some other color lines. The four spheres below show the same geometry. The first and third are in their original parametric form, while the second and fourth have been converted into meshes.



Once a parametric component has been converted into a mesh it cannot be reverted.

Related topics

■ [Basic Objects](#)

■ [Top Toolbar](#)

■ [Subdivision](#)

Object Materials



You can view the materials in an object by displaying the *material toolbar* from the Options->Materials menu. Each named material is shown applied to a small sphere. Double clicking on the sphere brings up the material editor dialog allowing you to change that material's properties.

The selected material is shown as a depressed button with a white name. You can set the basic material for any selected component by clicking the *Apply* button.

The *Object* button shows the current object's materials.

The *File* button shows the project's global materials, those that are shared among all objects in an entire project. You should add materials that are common to several different objects to the global list to help manage them easier.

If you want to define a new material, simply double click on the *New* button at the bottom of the list.

If there are more materials that can be shown, you can left click in the material toolbar and drag up or down to *scroll* the list.

Materials are discussed in more detail in chapter 10, Materials.

Related topics

■ [Materials](#)

■ [Material Editor](#)

Splines



You use the *spline* and *line* buttons to manipulate splines. To add a new spline, you must first deselect everything. Then select either the spline or line button and click and drag to place the first segment. The spline will be drawn with a white pick box at its root and a red one at its head like this:



The red box also indicates that the spline is extendable. You can left click on it and drag to add more segments:



Once you have built all of the segments you need, go back to select mode and double click on the spline to bring up its property dialog and uncheck the *extendable* check box. This prevents the accidental extension of your spline when you are trying to modify it in some other way. Go back to spline mode and your spline will look like this:



Now if you reselect the spline button you can click on *knots* and display their control points:



You can drag the knots to new locations, and change the positions of the control points to alter the shape the spline. Double clicking on a knot will show the knot dialog where you can change the knot into either a *smooth* knot or a *corner*.

Double clicking on a segment will highlight that segment and let you set the number of straight lines used to draw it:



Related topics

■ [Object/Edit Operations](#)

■ [Extruding](#)

■ Filling

True Type Fonts



When you click on the *text* button you can add text to an object. Click in a view window and a text cursor will appear. Type some text and it will appear as an outline in the window. Double click on the text and the text dialog appears. You can change the *font*, make it *bold* or *italic*, and set its *size*. You can always resize a text object but this isn't always the same as changing its initial size with the font properties dialog. Larger fonts are sometimes generated with more detail.

Arial Times

You can also *fill* and *extrude* text. Use the Build->Fill and Build->Extrude menu items:

Arial **Arial**

When they're filled or extruded, text objects are converted into meshes. Afterwards, you can do anything to them that you can to an ordinary mesh.

Related topics

■ [Filling](#)

■ [Extruding](#)

■ [Extruding Text](#)

Filling

You can convert any closed spline into a flat, *filled* mesh. Just select that spline and apply the fill operator using the Build->Fill menu item. The spline should not cross over itself or it will not fill. To fill a spline, simply select it and then select the Build->Fill menu item.



You can also build complex splines consisting of multiple independent curves. Interior closed areas are filled as cutouts. To build complex splines, select several basic splines and apply the Build->Join Splines menu item. For example:



Since text items are actually a group of (possibly) complex splines, text can also be combined with splines and filled. First select the text and convert it to splines with the Build->Convert to Spline menu. Then ungroup the string of characters with Build->Ungroup. Finally select the spline along with all of the individual characters and combine them into a single multiple spline with Build->Join Splines. Then fill the result:



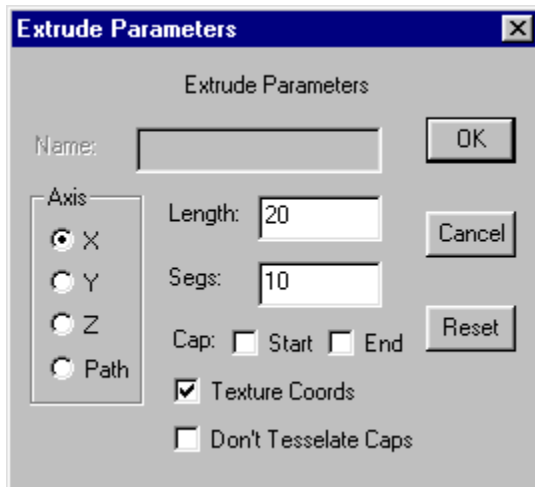
Related topics

■ [Splines](#)

■ [True Type Fonts](#)

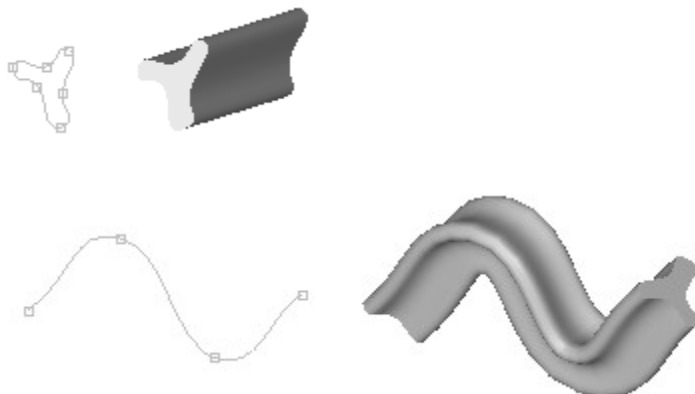
Extruding

Two more operations you can do on splines are extrusion and lathing. Both create a three-dimensional mesh out of a spline, but each in a different way. An extrusion sweeps the edges of the spline along a path (straight or curved) while lathing spins them around an axis.



To extrude a spline simple select it and choose the Build->Extrude menu item.

This will display a dialog with several parameters that you can set, such as whether to cap the ends and which direction to extrude. One option is to extrude along another spline. When you choose this option, you will be prompted to choose the spline after you leave the dialog. Some extrusions are shown below:



Note: The "center point" for the extrusion is the initial origin of your spline. Make sure that you create the spline around the origin or the results won't be what you expect.

You can also extrude text. Just select it and choose Build->Extrude:

Related topics

■ [Extruding Text](#)

■ [Basic Objects](#)

Extruding Text

To make 3D (extruded) text:

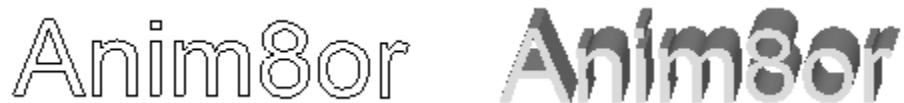
1. Select the text.
2. Click Build->Convert to Spline.

This creates a Group of Splines, one for each letter.

3. Click Build->Ungroup.
4. Click Build->Join Splines.

Now you have a single Spline object that contains multiple paths. It is also possible to extrude letters one at a time.

5. Click Build->Extrude.



Anim8or Anim8or

Related topics

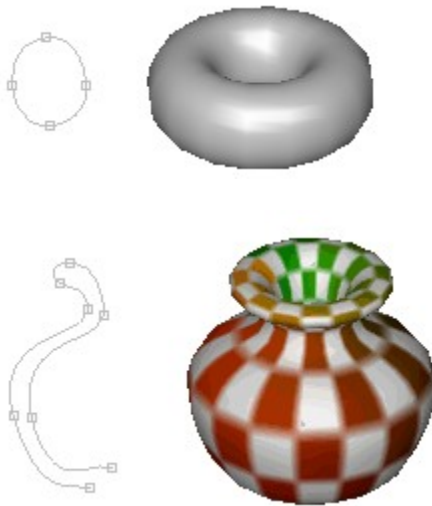
■ [Filling](#)

■ [Extruding](#)

■ [True Type Fonts](#)

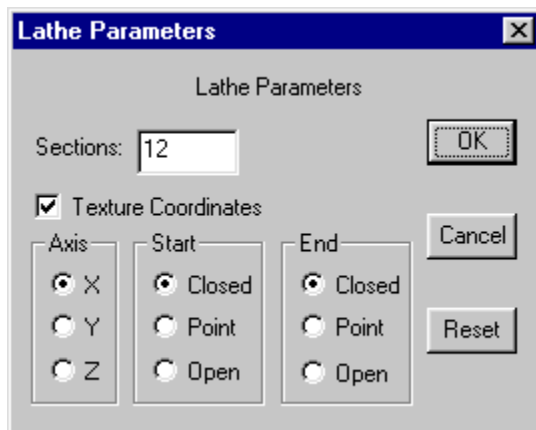
Lathing

Lathing creates a solid surface from a spline by spinning it around an axis and converting the area it sweeps into a mesh surface. It can produce a variety of different objects depending on the shape of the spline that you lathe. If you lathe a closed spline you can create wheels and donuts. If you lathe an open spline, you can build wine glasses, pots, and vases:



Since you can apply UV texture coordinates at the same time that you are lathing a spline, it is easy to build things with detailed colorings.

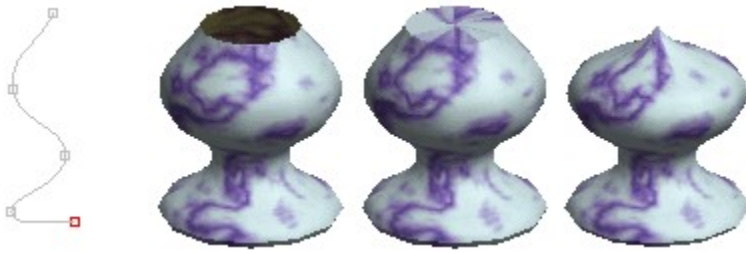
You use the Build->Lathe command to lathe a spline. This displays the dialog:



The *Axis* section selects which axis will be used to do the rotation. You can control the behavior of the end points of an open spline with the settings in the *Start* and *End* sections.

The three objects below are all lathed from the same spline, but the starting point (the one at the top, not the red one) is handled differently in each case. *Open* leaves the points at the beginning and end in their original place. *Closed* adds a new point on the axis at the

same level as the end point and connects to all the end points creating a flat top or bottom. *Point* moves the splines end point precisely to the axis and then lathes the spline.



Open, Closed, and Point modes used at the Start.

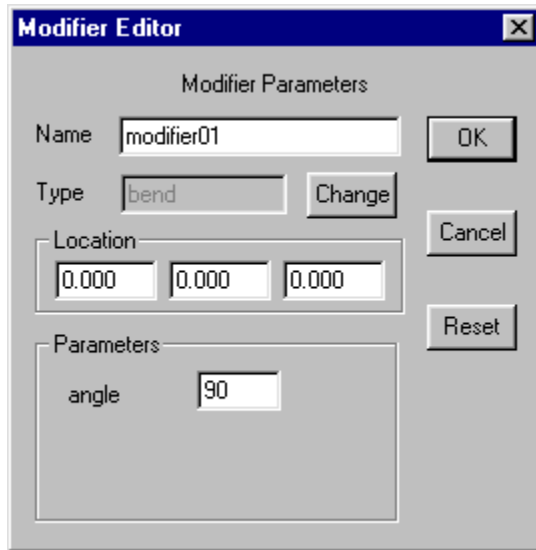
Related topics

■ [Object/Edit Operations](#)

■ [Grid Control](#)

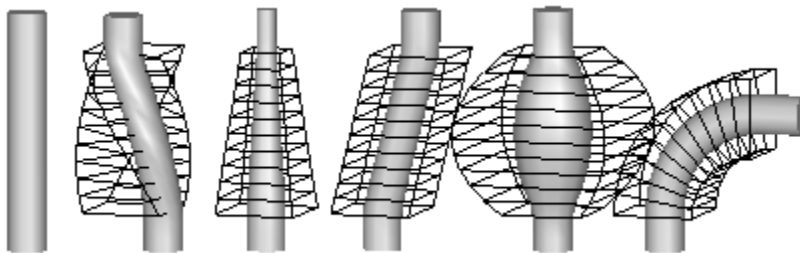
■ [Splines](#)

Modifiers



Modifiers allow you to stretch, bend, twist, and warp meshes into an endless variety of alternate shapes. To use them you create a modifier object and *bind* it to an existing mesh with the Build->Modifiers->Bind menu item. You can double click on the modifier to bring up its property dialog and change its behavior. The effect it has on the target mesh is shown in your object views. When you are satisfied with the shape, select the Build->Modifiers->Effect menu item and the mesh will be transformed into its new shape.

Here is an example of a cylinder modified by a *twist*, *taper*, *skew*, *curvature*, and a *bend* modifier. Modifiers preserve texture coordinates and other properties bound to points on the object.



Related topics

- [Mesh vs. Parametric Objects](#)
- [Basic Objects](#)
- [Object/Edit Operations](#)

Mirroring

You can also mirror an object using the Build->Mirror menu item. This builds a mirror image of the original object, a duplicate with the points reflected to the opposite side of the X, Y, or Z-axis. These hands are simple mirrors of each other:



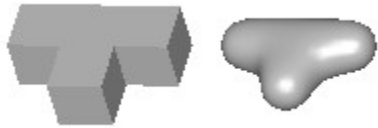
You often can model one half of a symmetric object easier than the whole. To build the whole, mirror the half model and join the two together.

Related topics

- [Connecting Meshes](#)
- [Merge Points](#)
- [Mesh vs. Parametric Objects](#)

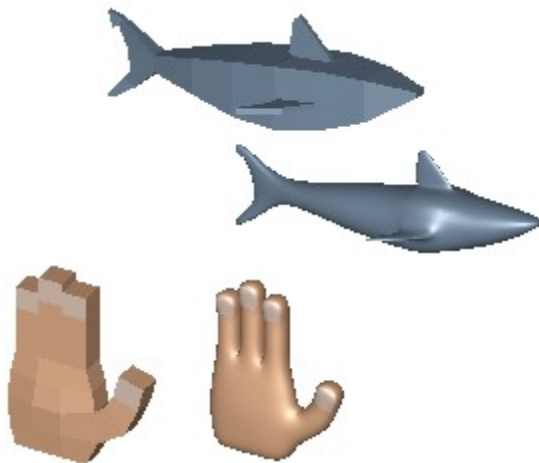
Subdivision

You use subdivision to round the corners of basic shapes and to give more detail to the model. Anim8or can subdivide any mesh. Just select the objects that you want subdivided, and select Build->Subdivide from the menu. Each time you do this you will round the corners a bit more, and multiply the number of facets by four. So be careful, or you'll create a very large model to manipulate!



Note: Subdivision used to be called smoothing in earlier versions of Anim8or.

There is a technique called box modeling that you can use to model complex objects that begins with a simple box. You bevel, extrude, resize, and warp a few flat faces until you make a rough form of your desired object. Then you apply subdivision, and viola! You have a nice model. The following models were made in Anim8or using box modeling:



Not a bad hand considering it was modeled by 24 simple cubes! You can learn more about building the box shapes in the section on Object/Point Editing.

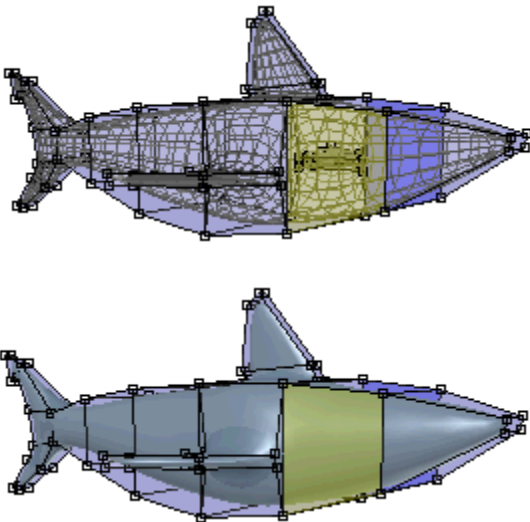
Related topics

■ [Point Editing](#)

■ [Subdivision Objects](#)

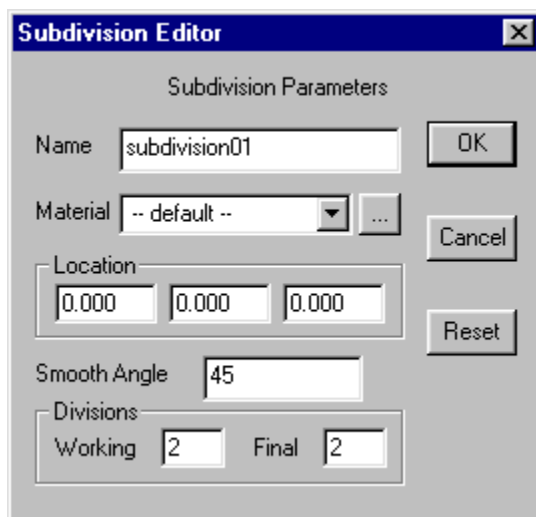
Subdivision Objects

You can convert a Mesh into a *subdivision object* with the Build->Convert to Subdivided command. You edit Subdivision objects just like regular meshes, but they are automatically subdivided as you work. This is a far easier way to model than to continually apply subdivision operations to try and see what your model will eventually look like. Selected faces are shown as transparent windows revealing a further refined model inside:



When you resize or extrude a face the internal smoothed view changes shape to follow. (You only see this view in the Point Editor. All other places your model will be shown as fully subdivided images.)

You can convert a Subdivision object into a Mesh with the Build->Convert to Mesh command. It will be converted at the subdivision level that you are using to view it in the working views.



Another very important advantage to Subdivision objects is size. Subdivision objects are stored in the undivided format that is many times smaller than the final fully divided model.

You can control the level of subdivision used on the screen and in the final image by double clicking and editing the properties dialog.

Note: The default Convert to Subdivided value is two, as this is the most commonly required amount. If you set the *Division* value to zero there will be no subdivisions at all.

Related topics

■ [Subdivision](#)

■ [Mesh vs. Parametric Objects](#)

Object Point Editor




The Object/Point button on the toolbar changes Anim8or into Object/Point editing mode. Here you can modify individual points Edges and faces of any mesh object. You can move Scale rotate Add and delete them. You can extrude Twist and scale faces weld close points together etc. When you enter Object/Point mode the display automatically switches to wireframe. If you want to view your objects as solids use the View->Full menu item.




Just below the coordinate axis button row there is a new row of three buttons. You use these to change the selection mode to *point*, *edge* or *face* in order to select different parts of your model. The select and drag select modes will then select the corresponding items.

Related topics

 [Point Editing](#)

 [Edge Editing](#)

 [Face Editing](#)

 [Common Button Meanings](#)

Point Editing



You use *point edit* mode to modify the shape of an object, and to add and delete unwanted parts of an object.

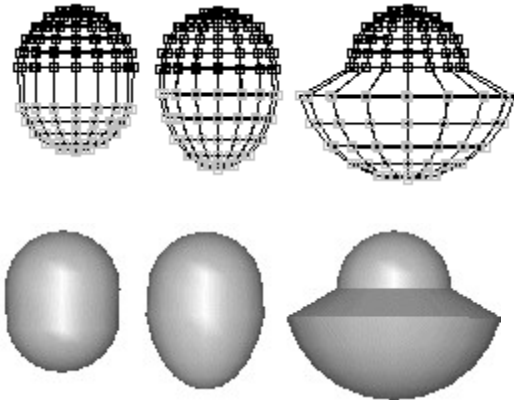
You can manipulate selected points by using any of the move, rotate, and scale buttons. The rotate and scale operations are done relative to the objects pivot.



If you delete any points using the cut button, any edges and faces that contain that point are also deleted. For example, to delete the bottom of a sphere, first select all of the points *below* but not including the equator using drag select mode, and cut.



If you move these same points, scale them non-uniformly, or scale them, you can make objects like these:



You can use the *Arrow Keys* on the keyboard to make tiny moves, rotations, and scales to selected points as well when the corresponding toolbar button is enabled.

Edge Editing

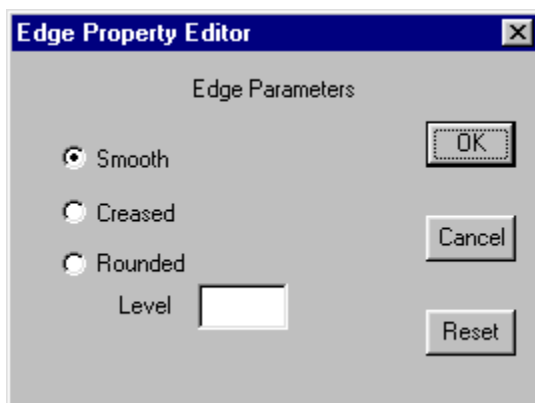


You use *edge edit* mode in a similar manner to Point Edit mode. When you select an edge, both of its end points are also selected. Thus all operations from point mode are enabled as described in the previous section.

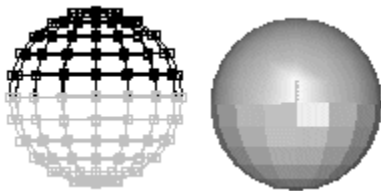


If you delete using the scissors in edge mode, however, only the selected edges and any faces that contain them are deleted. All points are saved. This allows you to change the tessellation of an object more easily, without having to add back previously deleted points.

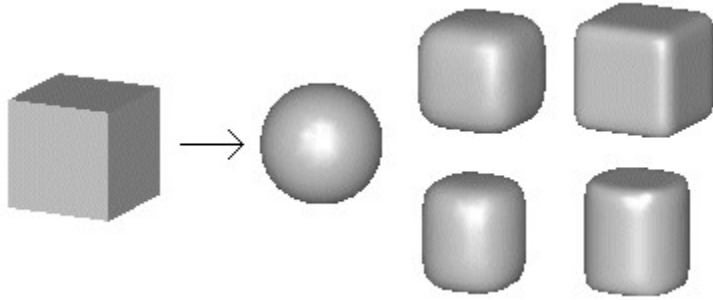
You can also set various *edge properties* for selected edges. Select the edges you want to effect, and then select the Edit->Edge Properties menu item. The default setting for edges is *smooth*. This means that if the solid angle defined by the two faces is less than a certain threshold, the edge will be smooth. Otherwise it will be creased. You can change the value of this angle by double clicking on a mesh when in Object/Edit mode to bring up its parameter dialog.



You can mark an edge as *creased*, so that won't be drawn as a smooth surface but will show as a sharp crease. This does not change the geometry of the model in any way; just the way normals are computer so that it appears smooth or creased. The following sphere has the lower half of its edges set to creased:



Another property that you can set in this dialog is how *rounded* an edge will be after it has been smoothed. Normally when a mesh is smoothed, all edges become smoother. Each application of smoothing increases the number of faces in a mesh, and smoothes all edges. You can mark any edge so that it will not be smoothed, but will retain a sharp crease, for one or more cycles of smoothing. The following shows a cube and several possible smoothings of it:



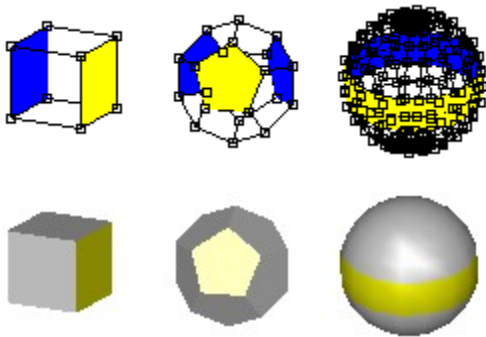
The sphere-like ball is the result of a simple cube being smoothed several times. The top two rounded cubes are the results of smoothing a cube with all of its edges set to a rounded level of 1 and 2. The bottom two rounded cylinders are from a cube with only the top 4 and bottom 4 edges set to a rounding level of 1 and 2.

Face Editing



You use *face edit* mode to select and manipulate the faces of a mesh. You can delete selected faces with the scissors button, but points and edges remain unchanged. You cannot move, rotate or scale selected faces. You can only make these changes to selected points (and lines). This is because it is somewhat ambiguous as to what you intend to do when several adjacent faces are selected. There are, however, some alternate ways of manipulating faces that are described below.

Selected faces are shown as filled even in wireframe mode. The front side is shaded *Yellow* and the backside *Blue* to help you see what faces are selected. This is also the case in filled mode, but you usually only see the yellow front sides.



A Note on Selecting Faces

It can sometimes be rather tedious to select the exact faces that you want, especially in a complex model. But there are several tricks that can help out.



The *select* mode selects faces that are facing the viewer over those facing the other way. So changing views of an object, or temporarily switching to Object/Edit mode and rotating the object so that different faces are in front, can help. This is one reason that selected faces are shown in *Yellow* even in normal views where you can't really do anything to individual faces.

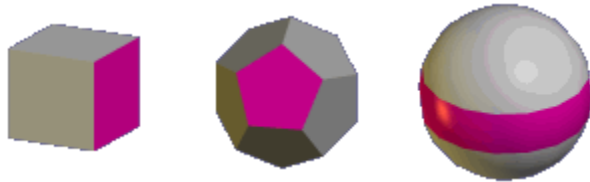


The *drag select* mode only selects faces that are entirely within the selection rectangle. So you can often add faces one-by-one until you've selected what you need.

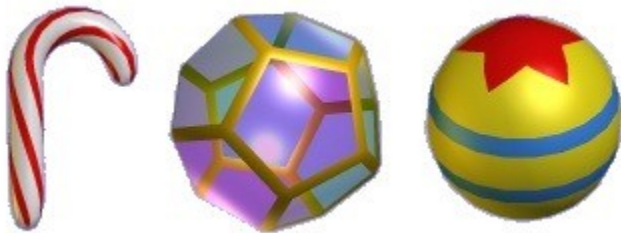
Applying Multiple Materials



You can also apply different material properties to individual faces. Simply select the faces that you want to change, display the Materials toolbar (use Options->Materials if it isn't already visible), select the material to apply, and click the *Apply* button in the toolbar.



You can use as many materials on a mesh as you want. With a little more imaginations you can make objects like these:

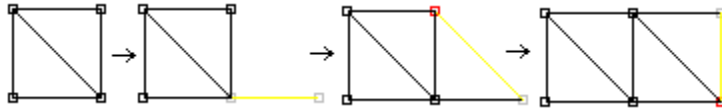


The *UV Texture* tool is also available in Point Edit mode. You first select the faces that you want to texture, and then use the UV Texture tool to interactively apply the coordinates. It helps if you already have a textured material applied to those faces.

Adding Points and Edges



You can add new points and edges to a model with the *Add Edge* button in the toolbar. To add things to an existing object, click on one of its points and drag the mouse out. A new edge and point will be added where you release the mouse. If you move it over another existing point, then the end of the edge will snap to the existing point, and an edge will be added between the two points. You can build complex meshes quickly using this method:



If you want to add a point that is close to another one but not make it the same point, hold down the Shift key after you click the mouse button down and hold it until you release the mouse.

If you want to start a new mesh, press the Shift key before you press the mouse button. A new mesh will be created with a single edge and 2 points.

Note: This command only adds Points and Edges, not Faces. You use the *Edit->Fill Holes* command to add faces.



If you enable grid snap when you add points you can make objects with exact measurements more easily.

Related topics

 [Adding Faces](#)

Adding Faces



When new edges are added to a mesh, the gaps can be filled in with new faces. To do this click the *Edge Select* button in the Point Edit mode, then select all the *edges* around the gap/gaps and use the *Edit->Fill Holes* command.



If you need to add new edges to a gap, use the *Add Edge* button on the Point Edit toolbar.

There are a few things to note before you can add a face:

- Faces can only be added to complete connected loops of edges. If there are any gaps, no face will be added.

- You can tell how many faces an edge participates in by its color when selected. The color code for edges and the number of faces attached to them is: red 0, green 1, white 2, violet 3+. They must be *red* or *green* to get filled. If an edge is *white* then it already has two faces connected to it and can't get a third.



- You can apply the *Edit->Flip Normals* and *Edit->Fix Normals* commands if you need to *orient* new faces properly.

- You can select a lot of edges and do a fill of the whole batch at once. Anim8or will start by filling any selected edge loops of length 3. Then it will fill those of length 4, etc. until no more faces can be added. This will sometimes create undesirable results and you will have to try again in smaller batches.

- You may have to delete some faces in a mesh before adding new ones.

Connecting Meshes

Attach two separate meshes to create a single, connected mesh using the Join Solids, Add Edge and Fill Holes commands.

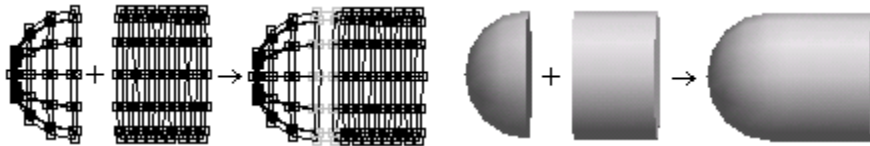
- First position the two meshes with the parts you want to attach near each other. Leave a small gap for the new faces that will connect them.

- In Object/Edit mode, select both meshes and apply the *Build->Join Solids* command. This doesn't add any new connecting faces but combines them into a single Mesh allowing you to do so.

- Next in Point Edit mode, add the edges between the points you want to attach.

- Select the new edges and those on the boundaries around them.

- Use the *Edit->Fill Holes* command to add the connecting faces. If the edge is *red* or *green* new faces can be added but if it is *white* it can't add any more.

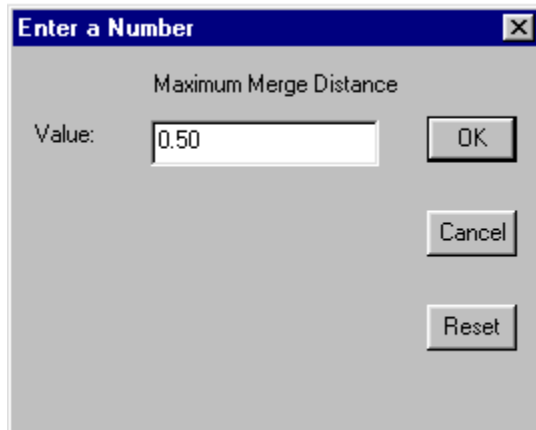


Related topics

- [Merge Points](#)

- [Object Point Editor](#)

Merge Points



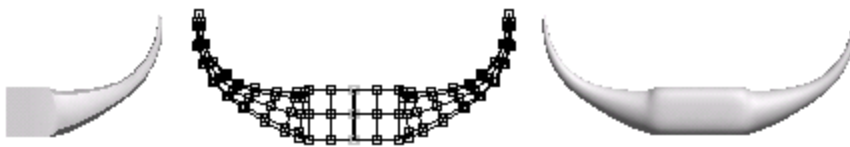
You can merge several points into a single point with the *Merge Points* command. In Point Edit mode, select the points to be merged (it helps if they are very close together) and apply the *Edit->Merge Points* command.

The dialog shown here appears. This sets the maximum merge distance allowed between two points. Click OK to merge all eligible points.

Connecting Meshes

You can also use this technique to connect two meshes. It is most effective when the points to merge are similar in position and number. For example, connecting half of a sphere with 12 longitude lines and a cylinder with 12 lines around is a snap.

If you build one half of a symmetrical object, mirror it with *Build->Mirror* and make the two meshes into a single mesh with *Build->Join Solids* you can then position the two halves close together, select the adjacent points and use *Edit->Merge Points* to make a seamless connection. This merged object was further subdivided once to round off its corners.



Related topics

■ [Connecting Meshes](#)

■ [Object Point Editor](#)

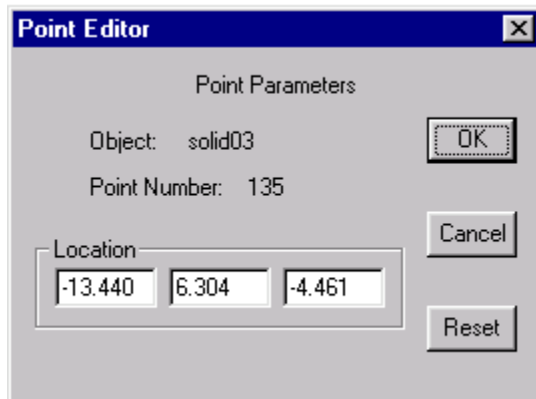
Point and Line Parameters



When you are in Point mode you can double click on a point to bring up a dialog box that let's you assign it's position numerically.



When you and in Edge mode you can similarly double click on an edge to edit it's properties.

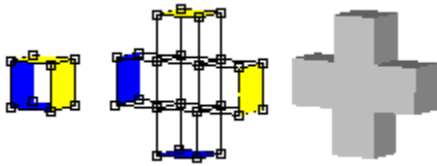


Face Extrusion and Manipulation Tools

You can manipulate selected faces in a variety of ways using the lowest buttons on the Point Edit toolbar. They can be used to build very complex models from a small number of cubeish shapes using the box modeling method.

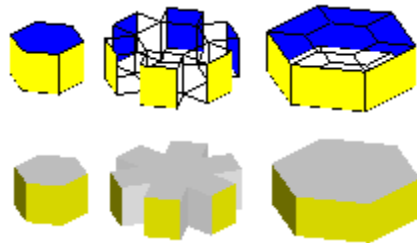


This button *extrudes faces* that are selected. Each face is translated in the direction that it faces, either out or in, and new edge polygons are added to connect the face to its original edges.

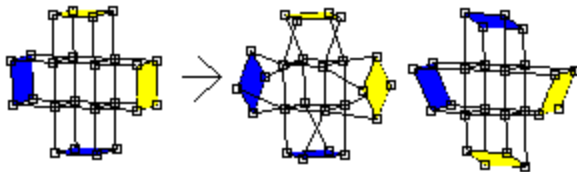


Similar to the extrude faces tool, the *extrude-connected faces* tool extrudes selected faces in a *mesh*. However adjacent selected faces remain connected. New faces are only added to the edges between a selected and an unselected face.

The six faces of the solid on the left are shown *extruded* and *extrude connected* below.

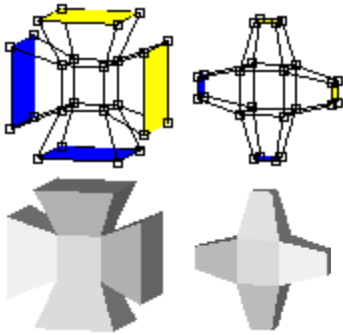


This button *rotates* selected *faces* around its center. It is most useful when the selected faces aren't adjacent.

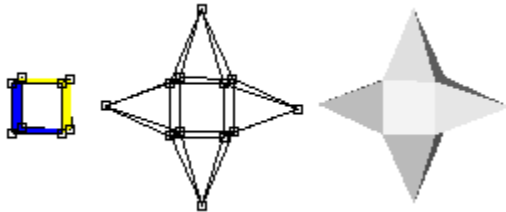




This button *scales faces* that are selected.



This button will *replace faces* with a *peak*.

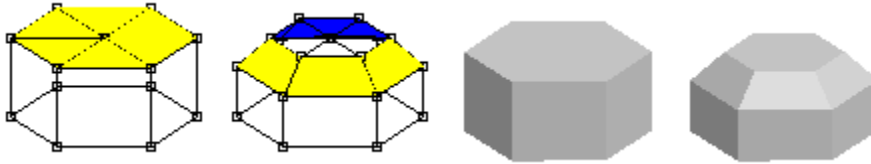


The *bevel* tool is used to add faced corners to a surface. It can bevel both *faces* and *edges* of any mesh. Selected edges are turned into new faces, cutting the corners off a model:

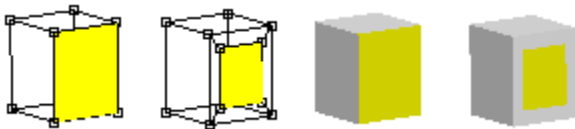


Selected faces are handled as a group. Edges between a selected face and an unselected

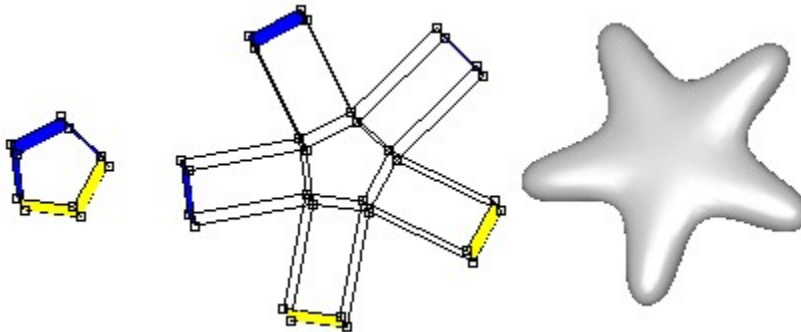
face are beveled but edges between two adjacent selected faces are left alone:



The *inset* tool is also useful for adding faces to surfaces. Each selected face is replaced by a smaller version of itself with new faces connected to the original edges. This is an easy way to add more detail to a particular part of a model, or to make a hole for a door, window or eyes:



These face manipulation operations are often followed by one or several applications of the *Subdivide* operation to build more complex shapes. For example, start with an extruded pentagon, select all 5 outer faces and extrude them, finally smooth to make a starfish:



Related topics

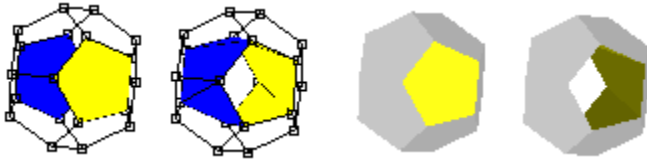
■ [Subdivision](#)

■ [Subdivision Objects](#)

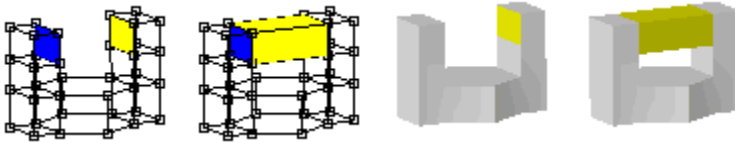
Face Editing Commands

Anim8or has several other useful face editing commands. They are activated within the Edit menu in *Point Edit* mode.

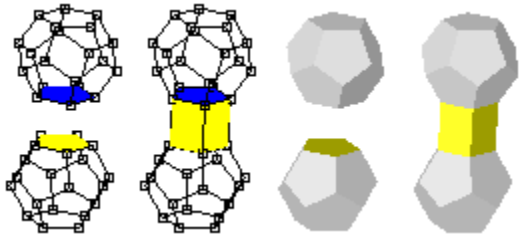
The *Bridge* command allows you to do several useful operations. To use it you first select two different faces. They have to have the same number of edges but can belong to different meshes. The *Edit->Bridge* command then will connect the two selected faces with new faces connecting each edge of one face with the corresponding edge on the other face. You can poke holes through a Mesh:



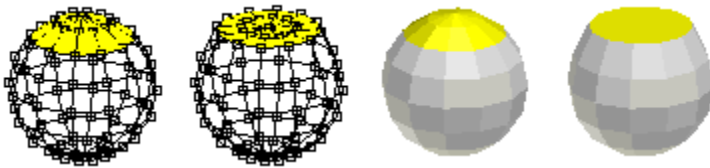
You can connect two parts of a Mesh to form a bridge:



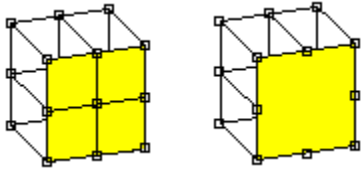
And you can join two different Meshes into a single mesh:



The *Flatten* command does just what its name suggests: it flattens groups of selected faces. All the vertices of each group are projected onto a flat plain. You can choose the group's average face direction or the X, Y, or Z-axis. Flattening is quite useful when you need a level base for a model, and can be use with the Merge Faces command to help simplify your models.

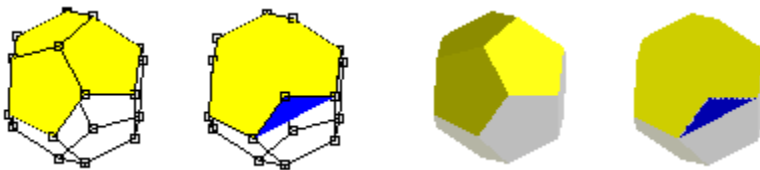


The *Merge Faces* command combines groups of selected faces into a single face. You can simplify areas of models that are too detailed this way.



You have to be careful to keep the faces convex and relatively flat or they may not render properly. Convex faces are those that don't have any points inside their outer boundary. Faces with interior points are called concave and can cause rendering errors:

In the example below, three pentagonal faces are merged into one big face with 9 sides. It is concave and doesn't draw properly as a result. It's easy to see in this example because of the stray back facing part is blue when it is selected. Other times it may not be as obvious what is wrong.



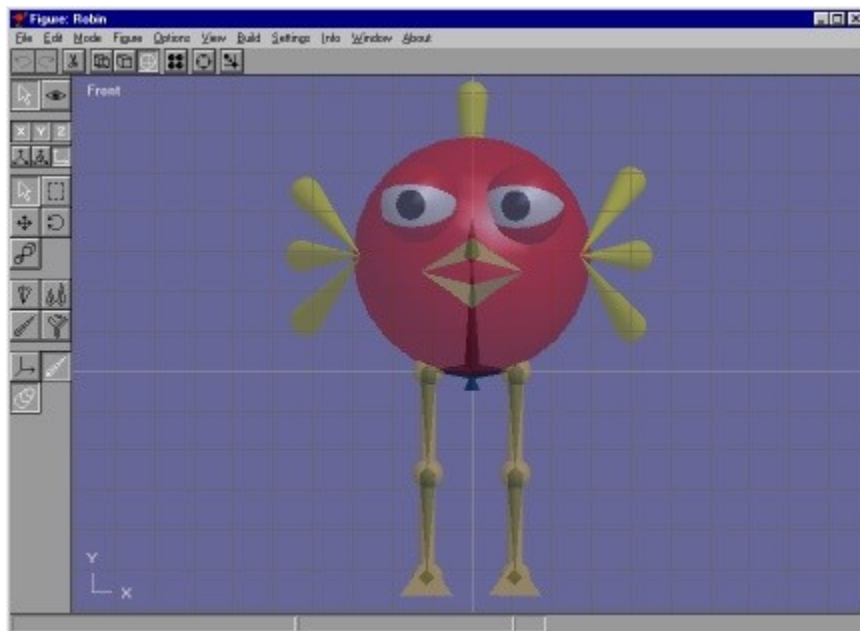
If you are working with a Subdivision object this is not as important. The faces that you are editing aren't drawn in your final object. Subdivision will smooth the mesh making it much better formed along the way.

The *Detach Faces* command detaches groups of selected faces from unselected faces. You can remove parts of a model this way.

Figure Editor

The Figure Editor is where you design animated characters to put into animation *Scenes*. The main difference between a figure and an ordinary object is that a figure contains a *bone* structure or *skeleton*, that you use to bend and shape the object into different *poses*. By setting the pose of a character in a few *key frames* of an animation, you can bring it to life. Anim8or will smoothly fill in the in-between poses by bending the joints of a skeleton by the right amount. You can enter the figure editor at any time by selecting *Mode->Figure* in the menu.

The basic screen is similar to the Object Editor and is shown below. You can also view multiple viewpoints at the same time, like the other editors.



Notice the faintly visible bones inside the character's body and legs. You can control the visibility of *bones*, *body parts* and other aspects to help design the skeleton. The character doesn't have many bones in its body, but it has animatable legs and feet.

The figure editor has two modes: *edit* and *viewpoint*. You click on one of the icons to switch between these two modes.



Figure/Edit mode. This is the initial mode that the figure editor starts in. Use it for designing a character.



Figure/Viewpoint mode allows you to pan, scale, rotate and size-to-fit any or all of the views in your workspace.

Figure Basics

There are two different parts used to build a figure: the *Body*, which are the visible parts of a character that appear in the final scene, and the *Bones* or *skeleton* which are used to *pose* and *animate* it.



The character's body parts are designed in the Object Editor as different objects. When adding body parts to a character it only makes a reference to the original object. This means that an object added several times doesn't increase the working file's size. You can also make changes to all instances by editing a single object.

There are also several pre-built shapes in the figure editor to help with preliminary design and motion tests. The "ball and stick" legs shown here are made from cylinders and spheres.



Once you have made the character's body, you switch to the Figure Editor and build the skeleton. Starting at the initial root bone, add bones one at a time to make the character's movable structure. For example, to make human-like legs you need to add a bone for each thigh, lower leg and foot. You can set each joint's *range of motion* to make animation easier.



When the skeleton is designed you can add the character's body parts. Each part is linked to a specific bone, so when the bone moves the part will too. You can move, scale and rotate each body part within the coordinate space of its bone.

Related topics

■ [Flexible Joints](#)

Figure/Edit Operations

The first group of buttons are used to select various body parts of a character and place the visible parts on the bones in a similar manner to the ones in the Object Editor.



Use this mode to *select* individual character bones and body parts. As usual, you can use the right mouse button to select additional things while keeping the original ones selected.



Use this mode to select all objects you *drag* a rectangle over. Again, using the right mouse button adds selections without deselecting anything.

The next three buttons apply to the objects that you have attached to the skeleton, not to the bones themselves.



This button *Moves* an object around in relation to the bone it is attached to.



These buttons are used to *Rotate* or *Scale* an object. Objects have to be selected before you can modify them.

Use the next set of buttons to edit the bones of your character's skeleton once it has been built.



This mode allows you to rotate your characters joints into their nominal position. This position defines the zero value for all rotations that this joint can perform. It is not the same as the default position of the joint, which is where the joint is when it's "relaxed", but is used to define the bone's coordinate system.



You use this button to change the length of a bone. When it is pushed, you can click on the end of a selected bone and stretch or shorten it with the mouse. You have to be sure that you click directly on the end of the bone or it will not change. You can also double click on a bone and set the length directly with a dialog box.



You use this mode to add new bones to a skeleton. To add a new connecting bone, you click on the end of a bone and drag to set the bone's length. It will always align in the same direction of its parent. So if you want it oriented in another direction, you must use the rotate button shown above.

Note: You have to click on the tip of the bone or nothing will happen. If you want to attach a

new bone to the end of an unselected bone, click on the tip and it will become selected. Then click a second time on the tip, and drag until your new bone is the right length. You can also double click on a bone to bring up it's parameter dialog and set the length manually.

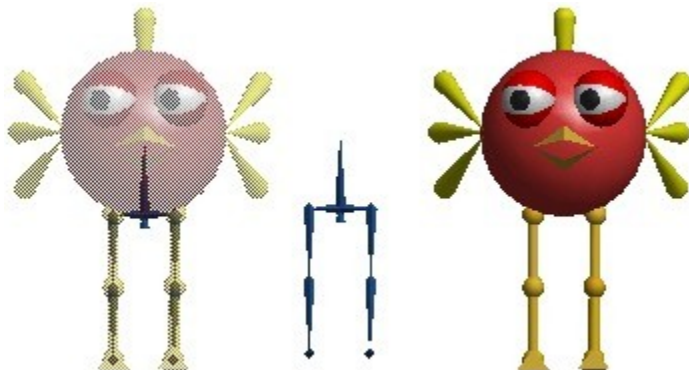


This button allows you to skin part or all of a skeleton with a single Object. Then when the joints of a bone bend the object deforms and bends seamlessly along with the skeleton. There is more detail on how to use this skinning tool later on.

You use the final group of buttons to control what is visible in the edit window. You may find it easier to manipulate your character's skeleton without its body getting in the way, or want to see the final, solid look without the bones showing. These controls will do just that.



You use these two buttons to toggle the visibility of bones and body parts. If both of them are enabled then your character's body will be shown in a sort of transparent view with the bones visible inside. You will find this indispensable when arranging your character's parts. If only one is enabled, the components are shown as solid objects.



This shows a character with a simple skeleton. Only the legs have bones, so you could only animate the legs. The face would be frozen in that silly look unless you added additional bones to animate the eyes, wings, beak, etc.



This button toggles a visible axis for any selected bones. It also shows you the range of movement for their joints.

Building a Skeleton




Each figure's skeleton starts with a *Root* bone. By adding a *child* bone to the root, and then to successive bones, you construct a skeleton one bone at a time. Each bone is owned by its *parent*, and any movement of a parent bone also moves its children.

When you add a bone it is aligned in the same direction as its parent. So you will normally have to rotate it to its proper orientation.

If you want to *delete* a bone, first select it and then choose *Edit->Cut* from the menu bar. This will delete the bone and all objects attached to it. Any lower bones will be moved up and attached to the deleted bone's parent.

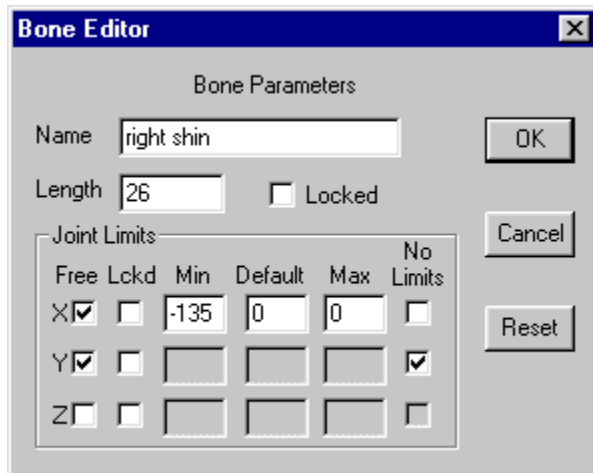


This is a simple skeleton. It is made out of 9 bones plus the root. This skeleton is built with two symmetrical hips and legs. The lower two bones in the right leg are selected and shown in white.

The foot has an extra diamond  visible on the end. This gives you an easier target to grab onto when you are manipulating the bone. The lower leg has one as well, but it is hidden inside the foot bone and isn't visible.

Flexible Joints

In Anim8or you decide which joints are *flexible* and which ones are frozen in a *fixed* position. By default they are all fixed. You add flexibility in the bone editor dialog that appears when you double click on a bone.

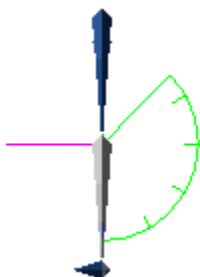


You control the rotation of a joint around each axis independently. Clicking on the *Free* box for an axis allows it to rotate around that axis. You can set the minimum, default, and maximum allowable angles as well.

Angle values are limited to values between -359 and 359 degrees with a maximum difference of 359 degrees.

You use the X and Z axis to control the bending of a joint, and the Y axis to twist around. Clicking the single *Locked* box will prevent any changes to a bone's length or position in the basic skeleton. It's a good idea to lock your bones once you've got things set up. This prevents their accidental alteration. You can still change all the joint parameters, but since this is done in a dialog instead of with the mouse, it is less likely that you will do something accidentally. The *Lckd* box for each axis is used to *animate* a character and doesn't apply to the figure editor.

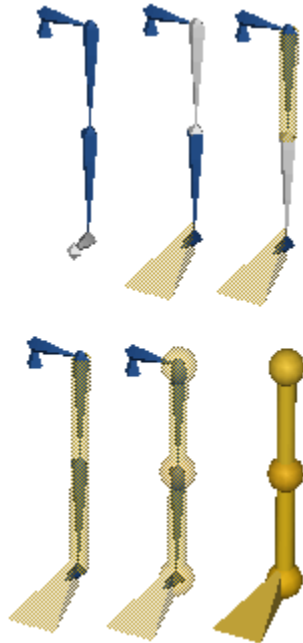
If you check the *No Limits* box then you will be able to rotate the bone freely on that axis. This kind of joint is called a *free* or unconstrained joint because there are no restrictions on its position.



■ This is a side view of a skeleton. The *show axis* button is selected so you can see the joint rotation limits of any selected bones. The X axis is shown in green, the Y axis in blue and the Z axis in violet.

The bone selected here is the lower part of the right leg and forms the right knee. It can only bend in the X axis and like a human knee can only bend backwards in this case a maximum of 135 degrees backwards.

Adding Body Parts



Once you have built a skeleton, you need to add the visible body parts that will appear in your final images. Each body part is an object that you add to a specific bone's local coordinate system. First select the bone that you want to add your object to, then use the *Build->Add Object* menu command to add it. Your object then behaves like that bone. When the bone rotates, so does the object.

You can also add simple cylinders and spheres. They aren't very sophisticated, they just look like sticks and balls, but they do allow you to do quick tests to see how your skeleton behaves. Add them using the *Build->Add Cylinder* and *Build->Add Sphere* menus.

If needed you can change a few simple properties for these shapes. Double click on one to display it's property dialog box, as shown below. You can also use the *Settings->Component->Material* menu command to set their color.

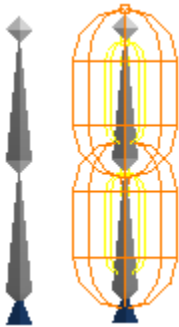
These basic shapes are called parametrics and aren't as flexible as mesh objects you build yourself. They have some fairly restrictive limits and aren't meant for any kind of final rendering. For complete control of objects you have to build them as meshes in the Object Editor.

Skinning

In the previous section you learned how to add a *body part* as the offspring of a specific bone. It follows all of its parent bone's movements, but remains a rigid, inflexible *object*. This is what you want when making a robot. It's not exactly what a living human or animal does. You want them to be flexible, to change shape and bend along with their skeleton. This is exactly what *Skinning* does.

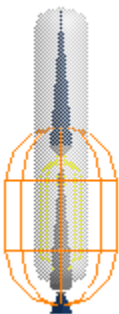


Once you've built an object and its skeleton, you can attach the object to several bones at the same time with the *Skinning* tool.



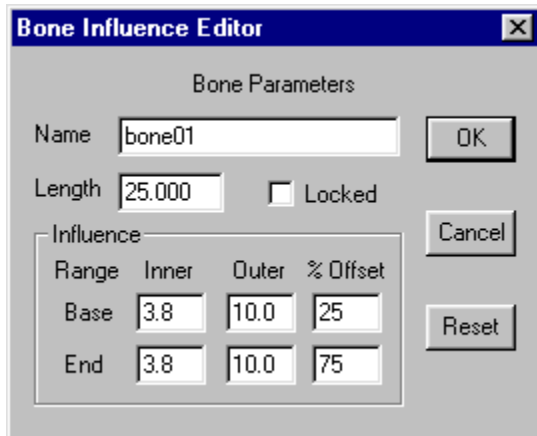
In this mode each bone has an *area of influence* that is strongest close to the bone and diminishes further away. Each *point* in an object moves proportional to the strength of that bone's influence on it.

The two bones here show their ranges of influence. The inner yellow area is where the bone exerts maximum control. This does not mean that other bones can't also control points that fall within this region, just that the bone is a strong influence. The outer orange area is the *limit* of the bone's control. A bone does not affect points that lie beyond this boundary at all. The only exception is that if a point lies outside all bones' area of influence, it is simply controlled by its *base bone*, the one it was initially attached to.



To skin an object you first attach it to the base bone. It should be chosen carefully, since only the base bone's descendents will be able to bend the object. Now enter the *Skinning* mode and select your object by clicking on it. This adds the object to its base bone influence, enabling the bone to alter the object's shape. To add other bones simply click on them and confirm that you want to add them in the dialog that appears.

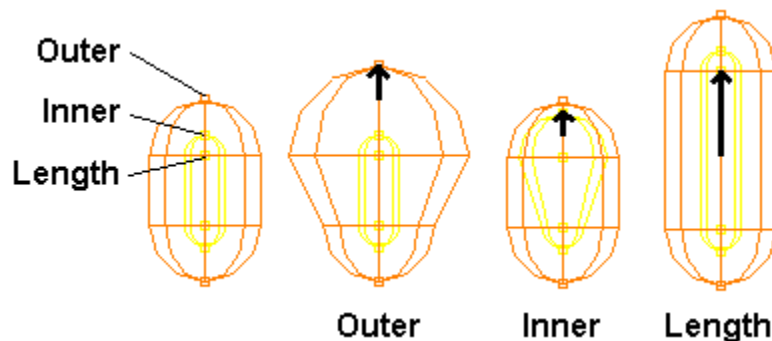
You can adjust the size of a bone's *Influence* in two ways: double click on it and enter numeric values, or edit the influence regions directly on the screen.



You can set the size of the *Inner* and *Outer Range* for each end of a bone here. The *Offset* sets the start and end influence positions along the bone as a percentage of the bone's length.

Changing sizes directly on the screen is often more effective but it can be tricky to do as figures are often cluttered with several overlapping regions.

There are six control points on each bone, three at each end. If you turn off the visibility of both bones and objects by clicking on the buttons at the bottom of the toolbar you will get a clearer picture of what's there. You use the one at the tip of the orange area adjust the size of the outer region, and the one at the tip of the yellow area for the inner one. The inner yellow point adjusts the offset.



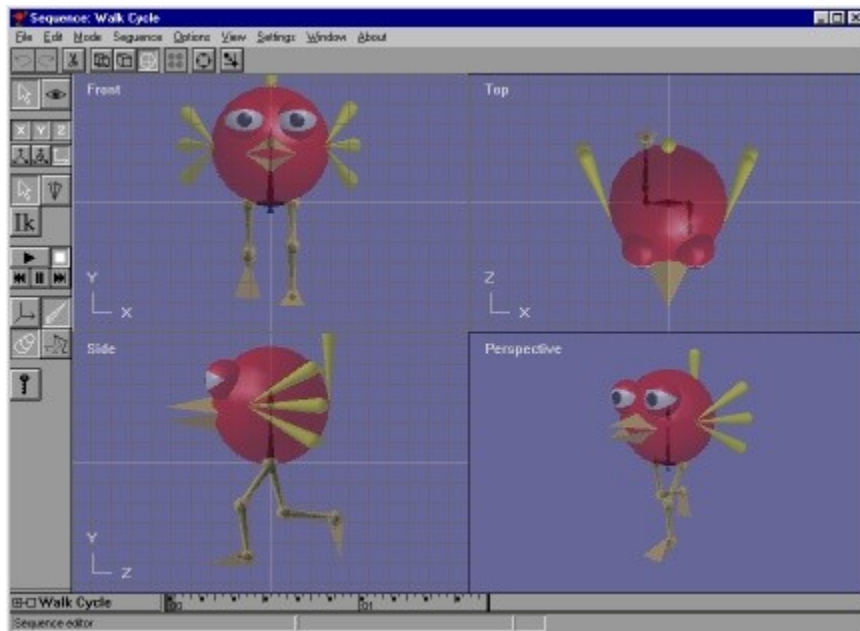
One final note: Don't attempt to adjust your bone's positions in the Figure Editor and expect to see your mesh bend! It doesn't work that way. You will only be adjusting the bone's position, and area of influence, relative to your object. You must go to the Sequence editor to start animating your character.

Now you're ready to go to the Sequence Editor to make some animated sequences. Then on to the Scene Editor for your final movie!

Sequence Editor

The Sequence Editor is where you create most of the movement that gives personality and style to your characters. A *sequence* is a short block of key frame poses, such as one cycle of a walk. The easiest way to animate a figure is by placing it in a scene and adding one or more sequences.

Longer animations can be built from several short sequences, such as building a long walk out of multiple applications of a walk cycle. Anim8or automatically joins the adjacent sequences into a single, smooth movement using the key frame positions as guides. A view of the sequence editor is shown below:

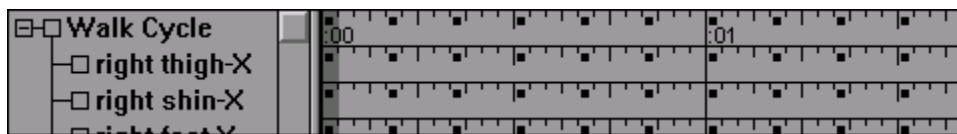



Time Track

The *Time Track* at the base of the Sequence Editor indicates the current frame shown in the viewports. The frames that have one or more joints set in key positions are marked with small black squares ■ in them. The numbers :00 and :01 show the time in seconds since the start of the Sequence of a position on the track. The current frame is highlighted with a dark gray background.

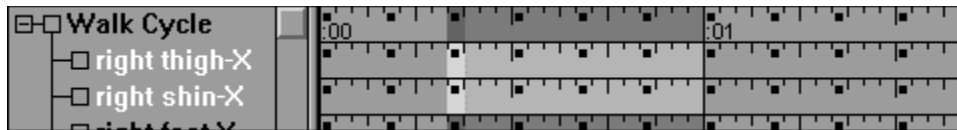


You can expand the track to see a tree view showing details of individual joint's keys by clicking on the plus symbol ⊞ next to the title.



Key positions are shown for each joint/angle with a small black square in the frame. You can also select a joint by clicking on it in the expanded track. Resize the expanded track view by clicking and dragging the horizontal resize bar  at the bottom of the toolbar up or down.

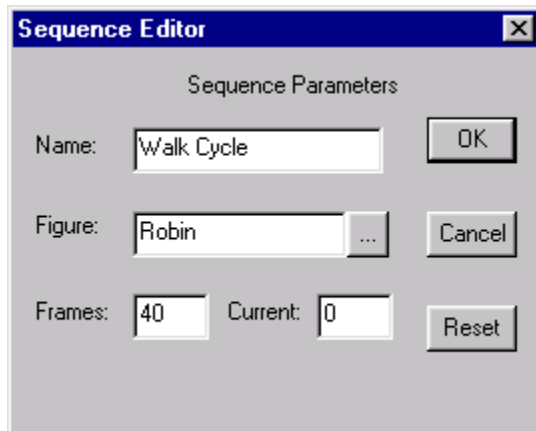
The track will automatically scroll to keep the current frame visible when a sequence is too long to show all at once. If you want to see a frame that is off the window you can either use the *Settings->Sequence* command to set the frame numerically, or the left/right arrow keys to play the sequence forwards or backwards until you reach the frame.



You can move to a particular frame in a sequence by clicking on that frame in the track. If you click and drag the mouse it selects a range of frames. Clicking on the name of a bone selects that bone and highlights it in the track window. Clicking on the title of the sequence selects all bones. Mouse buttons have their usual meaning on the bone names: the right button adds to the selection, while the middle button subtracts. Use Shift-Click to select a new frame range while still keeping the same current frame.

Sequence Basics

You can't Animate a character before you have one! So it isn't surprising that you must first design a character in the Figure Editor before you can give it any movement. Once you have one, you switch into the Sequence Editor and a new, blank sequence is created. Select the *Settings->Sequence* menu command to show the Sequence's settings dialog:



Click on the browse button and select your figure from the list. You can also set the number of frames in the sequence here. Now the figure will appear in the viewports and you can start animating. You can also set the Sequence's current view to a particular frame here.

The sequence editor has two modes: Edit and Viewpoint. Click one of these icons to switch between them:



Sequence/Edit mode is the initial mode that the sequence editor starts in. It is used to set all the poses and to view any motion created.



Sequence/Viewpoint mode allows you to pan, scale, rotate and size-to-fit any or all of the views in your workspace.

Edit Operations



This button is used to *select bones* of a character. The right mouse button allows you to select multiple bones.



This mode allows you to *rotate the angle* of a character's joints to new positions for *key frames*.



This is the button for *Inverse Kinematics*, a neat way to pose and animate your characters. Unfortunately it's grayed out and disabled because it isn't quite ready for prime time. Sorry! It should be in a later release...

Visibility Options, Animate Button

Visibility Options

These controls allow you to show different aspects of your character on the screen when you are working.



This button toggles the *Axis* visibility and the range of motion of any selected joints.



These buttons control the visibility of the *bones* and *body parts* of your character, like in the Figure Editor.



Use the *Ghost View* button to show multiple key frames of a sequence simultaneously. Compare the previous key poses and in-betweens that Anim8or creates with other frames to see how they fit.

Animate Button



The animate button is the magic wand for making things move. Use it to add and change *key positions*. When rotating the angle of a bone you sometimes need to do it for all frames in a sequence and sometimes just for the current frame. The animate button controls this option. If not selected, changes are applied to the entire sequence. If selected, only the current frame is changed. The next sections explain this in more detail.

Related topics

■ [What is a Key?](#)

■ [Making a Key Pose](#)

■ [Making a Sequence](#)

What is a Key?

If you had to set the position of each joint in a figure in each frame of an animation that's about all you'd get done! Fortunately, there is an easy way to animate called *Key Frames*. With this method you pose a character in a few frames, to represent what it should do in those frames, and Anim8or smoothly fills in the *in-between* frames. You get better results, naturally, if the *key frames* represent the most significant points in a character's movement, hence the name "key".


There is no need for all joints to be *keys* in a frame. If a character is walking forward and slowly turning his head, you may need dozens of key positions in the legs but only a couple for the head turn.

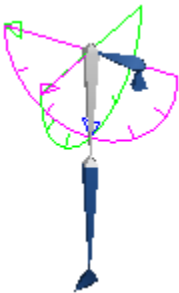
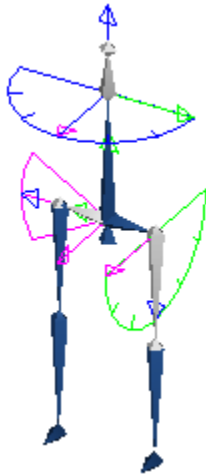
Making a Key Pose

When you create a sequence the character is shown in its default position. You change its position by bending the joints, but only the ones made flexible in the Figure Editor, and only in the ways they could bend.

To make a *Key Pose* you must first select the joint or joints that you want to bend. Showing the axis and even hiding the body parts can be helpful.



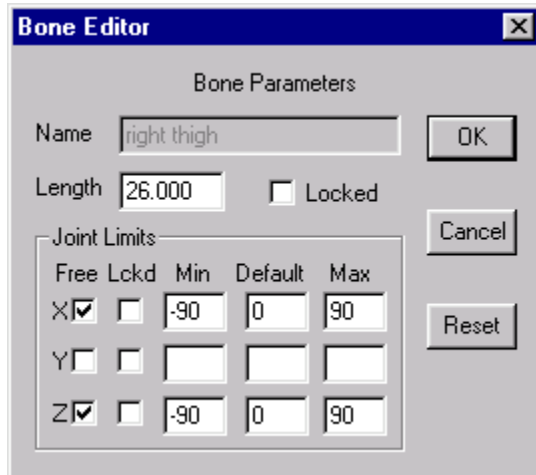
Enter *Rotate Angle* mode, then enable the *Animate* button. Click on the tip of the joint  and drag the mouse to rotate it. You have to pick a joint that can be rotated, and use the correct mouse button for the axis you want to rotate.




To rotate around the X-axis, shown in *green*, use the left mouse button. The joint will try to follow the mouse.

To rotate around the Y axis, shown in *blue*, use the right button. Since the Y-axis rolls the joint around the bone's length, and doesn't change the direction it's pointing, you have to move the mouse to the left or right to move the joint.

To rotate around the Z-axis, shown in *violet*, you have two choices. You can use the middle button, if you have a 3-button mouse, or the left button. If the joint can rotate around both the X and Z-axis, you have to disable the X-axis first. Double click on the bone and *Lock* the X-axis by checking the *Lckd* box in the X row, as shown below:



That's all there is to it! You've created a key position for a joint.

To make the character move, go to another frame (click the track window) and make a second key position. Click on the play button  to see it move.

Continue setting the positions of any joints that need changing until you are satisfied with the pose.

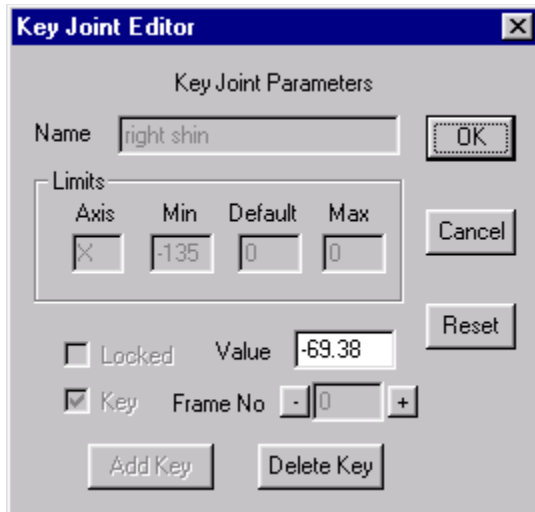
Related topics

■ [Flexible Joints](#)

■ [Making a Sequence](#)

Editing Key Frames

You can edit *key frame* values for individual joints. Double click on the joint's track in the expanded view of the track and the *Key Joint Editor* dialog will appear:



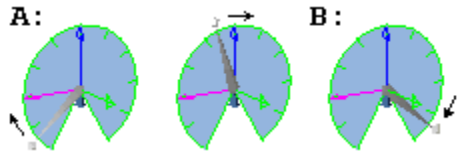
The current joint angle value is shown in *Value* and the current frame in *Frame No*. If it is a key frame for the joint you will be able to enter a new value for the key and you can delete the key with the *Delete Key* button.

If it's not a key frame you can make it one with the *Add Key* button.

The plus + and minus - buttons advance the current frame by one in either direction.

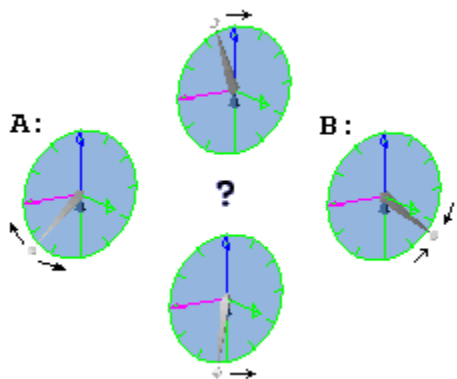
A Circle Has 720 Degrees

Sometimes rotation is not quite as simple as giving the first and last positions and letting the computer figure out what to do in-between. For *constrained* joints (those with limits on how they can be rotated) like the one below, things are simple. Moving from position A to position B simply rotates to the right.



However, for free or *unconstrained* rotations this doesn't quite work. There are two directions that the joint can move: clockwise or counter clockwise.

Anim8or resolves this dilemma by expanding the range of angles that you can use to be from -360 degrees to +360 degrees. There are then two values that represent the same position. One-quarter turn to the right is either +90 or -270. If the difference between the angles is less than 360 degrees, the joint simply moves between the two. If it's greater than 360 degrees then the joint moves the opposite way. It's not really as confusing as it seems when you try it out.



Making a Sequence

A *Sequence* can be thought of as several *Key Poses* played back in order. Every joint position in a *key frame* is linked to the previous and following positions. Anim8or fills in joint positions for the *in-between* key poses. When viewing an animation, characters appear to make a continuous motion. The smoothness and speed of this motion depends on how fast and in what ways the key poses change. A large part of the work in animation concerns getting the motion just right.

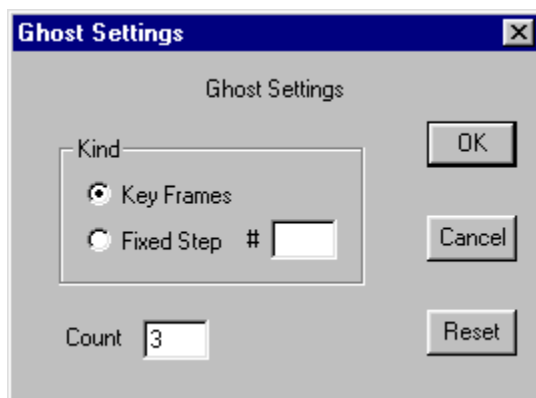
After making a key pose, set the sequence to a later frame by clicking the appropriate part on the track or with the left/right arrow keys. Then make another key pose. You don't have to set the position of every joint, just the ones needed. If one part of your character is moving at a slow pace, or needs less detailed control, save yourself some work. You can always go back and add more keys if you find you need them.



If you enable *Ghost View* you can see the relative positions of other frames. This makes it easier to adjust things relative to one another. Ghost view can get rather confusing at times, so it helps to hide the body parts and just animate the skeleton.



Change the frames to be ghosted with the *Options->Ghost Settings* command. They can be limited to just *key frames*, or be a *fixed step* of frames apart. You can also adjust the number of ghosts with *count*:



Related topics

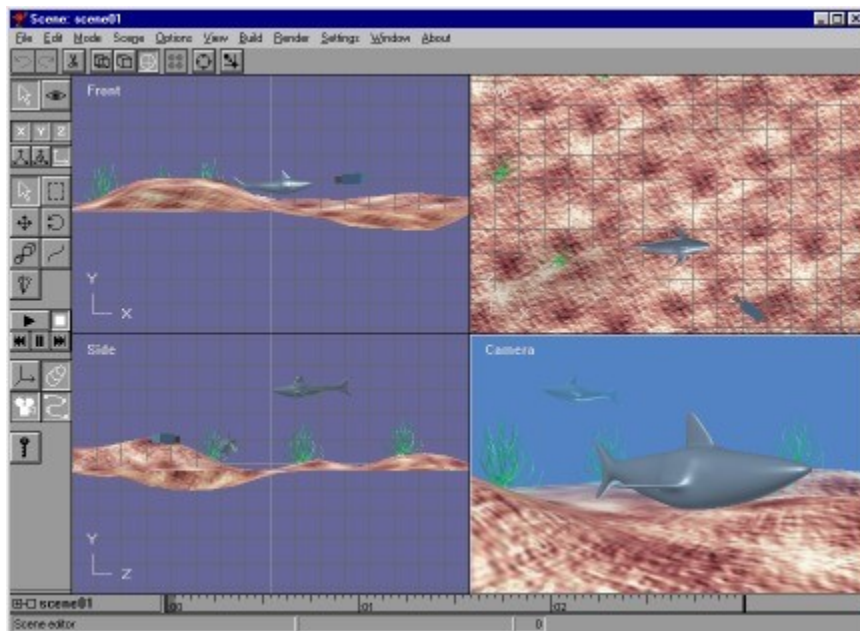
■ [What is a Key?](#)

■ [Making a Key Pose](#)

Scene Editor

The Scene Editor is where you build sets, adding objects and figures, cameras and lights, and construct your final scenes. Everything can be animated; cameras, lights, and characters. And you can save the output as a sequence of still images, or as an .avi movie file. You can even generate stereo views! You enter the *Scene Editor* from the *Mode->Scene* menu item.

The basic scene editor is shown below. You can configure it to show either four views (front, top, side, and perspective), a single view from one of these views, and orthographic view, or from the camera view. The usual menu, toolbar, and status bar are there, and a track bar that shows the current frame.



In addition to the normal select, move, rotate, and scale buttons in the toolbar, there are several more that perform functions specific to the scene editor.



Use the VCR style block of buttons to control the playback of your scenes. They work in the usual fashion.



The *Axis* button makes a joint's rotational limits and axis visible when you are animating joint positions



You can show or hide your figures' bodies with the *Figure Objects* button. This can make editing joints much easier.



The *Camera* button controls the visibility of your camera and lights. They aren't shown in the camera's view, the one that you normally use to render scenes.



The *Path* button sets the visibility of object's paths. Any object that you select will display its path as an editable spline.



The key or *Animate* button enables animation. When it's pressed, the changes you make to the location, orientation, size and other aspects of objects in your scene will be animated when you play the scene.

Elements of a Scene

An element is a part of a scene. A new scene contains two default elements, the world and the camera. The world is the global coordinate system. The location and orientation of everything in a scene is, ultimately, relative to the world. The camera is the viewpoint for the movies you make. You cannot delete either the world or the camera.

Everything that you can add to a scene, including lights, objects, figures, and targets, are also called elements.

Adding Objects and Figures

Adding Objects

You add objects to a scene by selecting the *Build->Add Object* menu item. This brings up a dialog showing all of the objects in your project. Select the one that you want and click OK. It will be added to the center of the scene. This is not the actual object; you cannot edit it from within the scene editor. Instead it is a link to the object. But you can scale the view of it within the scene, and add multiple copies of it. The screen shot of the scene above has three instances of the seaweed object in it.



It is often more useful to select *world* coordinates when adding objects to a scene. They are "dropped" into the scene at the center, at coordinates $\langle 0,0,0 \rangle$, and are selected.



Making sure that the move button is set, you can use the left mouse button to drag the new object along the ground plane within any viewport. The right mouse button will raise and lower it.



You can also scale and rotate an object's size and orientation, and animate them by specifying a series of key frames.

Adding Figures

You add figures in the same manner with the *Build->Add Figure* menu item. They are dropped at the center of the scene. You must move them to their proper place. You can animate the position of a figure with key frames, and you can also attach predefined sequences of motion, as described in the Animation chapter.

Related topics

[Animating Figures with Sequences](#)

The Camera, Targets

The Camera



The camera is the reference point for a final animation. It's fully animatable. You can change its position, field of view, direction, etc. You can also animate it for any variety of pans, tilts, or dollies. You can attach a camera to another moving object for fluid tracking shots, lock a camera's direction on a moving target, and even move right through "solid" objects. To see what the camera sees, select the *View->Camera* menu item.

Targets



A target is a dummy point of reference. You use them as points of interest for the camera to follow, or as a parent of a group of objects that you want to move. They are fully animatable, and do not appear in the final scene. You add a target with the *Build->Add Target* menu item.

Lights

When you first create a scene, there are two default lights in it. They give the scene an overall level of illumination so that you can see what you are doing. You can't move them about or change their properties. In general you should add your own user lights for better results. When you do the default lights are automatically deleted.

You add lights to a scene with the *Build->Add Light* menu item. This adds a light directly overhead with default properties. Double click on the light to change its color or other attribute, and drag it around the scene to change its position or direction.

Like other kinds of objects, lights are fully animatable, including their color.

There are three kinds of lights that you can use in Anim8or:



Infinite or *directional* lights cast an even light on all objects in a scene, with all of the rays parallel, like the sun. Close and far things are illuminated with the same level of light.



Local lights emit light that radiates out in all direction from a particular point in the scene, like the bulb in a lamp. Objects between the camera and the light are backlit, while those behind the light are front lit. The further an object is from a local light, the less illumination it receives from that light.



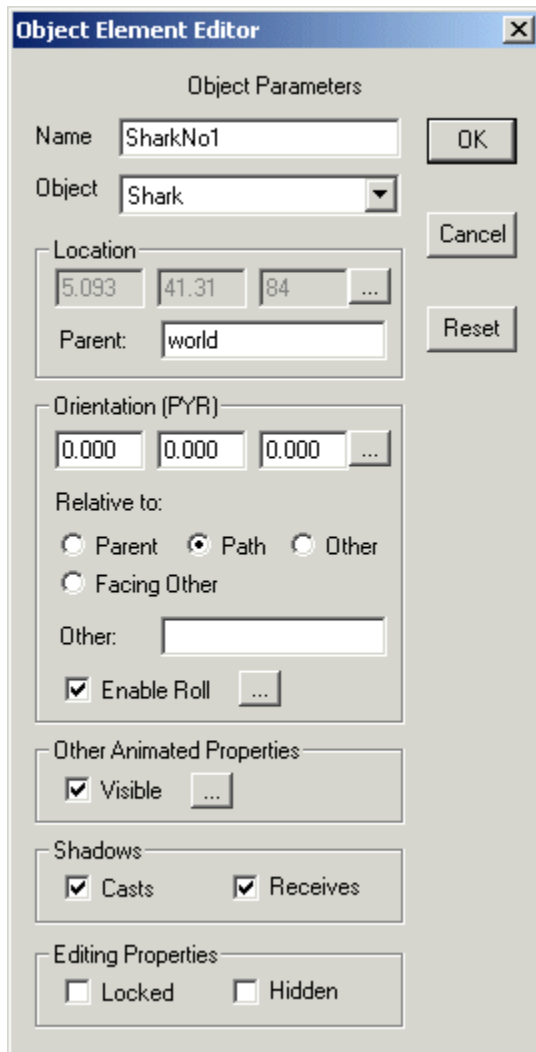
Spotlights are similar to local lights, but they only illuminate objects that lie within a particular cone. Things in the center are fully illuminated, while things near to the edge of the cone are gradually lit with less light.

Lights do not appear in the final scene, or rather in any perspective or camera view. If you want an object to appear to emit light, then you must add a light in the same location as the object.



You can also toggle the visibility of lights in the other views with the *Show Camera* button.

Object Properties Dialog



You can edit various properties of any kind of element by double clicking on it. This brings up a dialog like the *Object Element Editor* shown on the right.

You can animate any value that has a controller button next to it, changing its value throughout a scene. Values with *white* backgrounds are *fixed* for the scene. You can edit them directly in this dialog. Values that are *grayed* out are *animated*. You edit their values by clicking on the adjacent button.

If you want to animate a fixed value, click on the button to add a controller. Controllers are explained in more detail later in this chapter.

There are several common fields to all element types:

Name

The element's name within this scene. Remember, an object element in a scene is only a

reference to the actual object. There can be more than one occurrence of the same actual object in the same scene. If you change the original object in the Object editor then all of the references to it in your scenes will change as well.

Object

The actual element's name. You can select any object in your current project with the drop down dialog.

Location

The location of an object in $\langle x,y,z \rangle$ coordinates is shown here. This is the location relative to its parent's location and in its parent's coordinate system. You can animate the location.

Parent

Any element can have another element for its parent. Then when the parent's position changes the element's position will change as well. With a parent, the location is a relative position. To specify a parent for an element, enter the parent's name in this box. To remove an element's parent entirely, clear the box or use the default world parent.

Orientation

This value shows you element's orientation in degrees of pitch, yaw, and roll. Pitch is a rotation around the X-axis, yaw the Y-axis, and roll the Z-axis. The values shown are a relative orientation to one of several coordinate systems. It can be either relative to its parent, to its path or direction of movement, to the orientation of another element's, or it can always facing a particular element. You can animate the relative orientation.

Enable Roll

You can disable an element's roll, keeping it "upright". You normally want to keep your camera upright so by default the camera cannot roll, but everything else can. Enable Roll can be animated.

Visible

You can animate the visibility of elements too so that they appear or disappear during your scene.

Shadows

Shadows add realism to your scenes but are very expensive to compute. You can decide which elements cause shadows and which ones show shadows on them. If you want an element to cast a shadow you must enable it with the casts checkbox. If you want it to show shadows check the receives checkbox.

Editing Properties

The Editing Properties values are useful when editing your scene. You can hide an element by checking the "hide" box. This is useful to allow you to see what's behind something, or to simplify a scene for faster drawing. To show a hidden element, either uncheck the "hide" box, or select the *Edit->Show All* menu item.

You can lock an element by checking the "locked" box. This prevents any changes to any of its properties within the scene, such as location or orientation. This does not mean that it cannot move. If it is initially animated, it will stay that way. Locking only prevents you from accidentally changing that animation.

Note: This does not mean that the element cannot be changed in any way. For example, if it has a parent, then when the parent's location changes, so will the element's position, since its definition of location is relative to the parents.

These values are only present for certain kinds of elements:



Scale: An element's size can be animated. However you do not use a dialog to do it. Instead you simply select scaling, enable animation, and change the size.



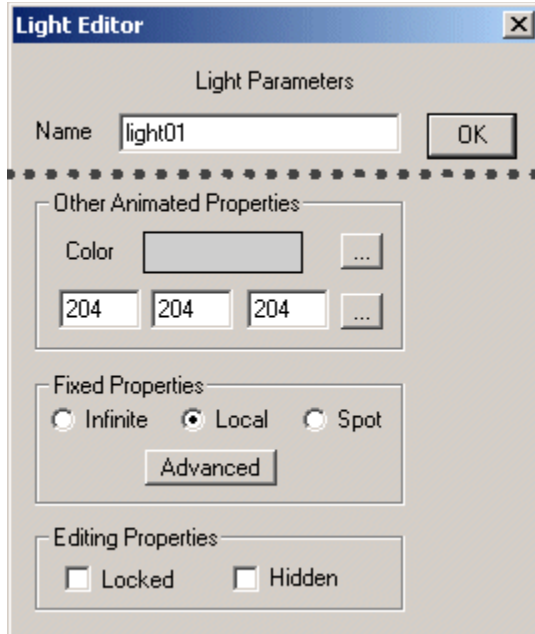
FOV: You can set and animate the camera's field of view, the angle of the width of the image the camera shows on the screen. This value is in degrees.



Color: You can also animate the color or brightness of a light.

Light Properties Dialog

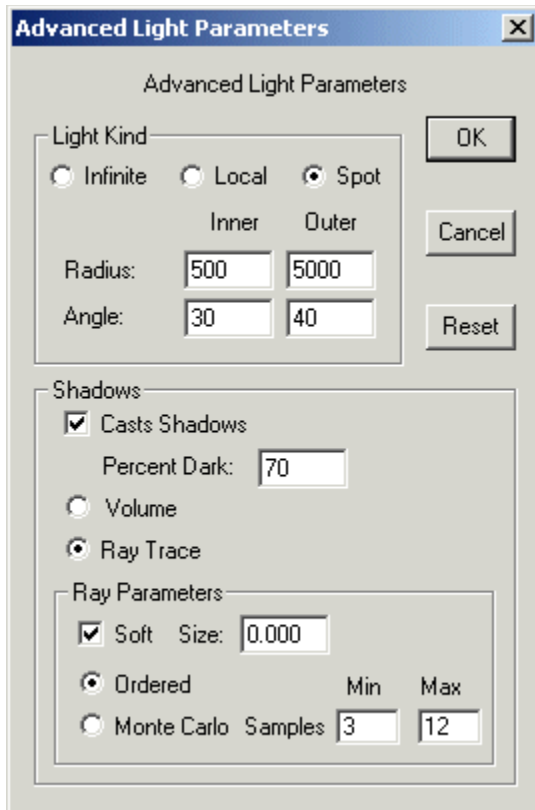
Lights have some unique settings that you can use. You access these from the Light Editor dialog by double clicking on a light.



... Change the color of a light by entering the numeric value directly, or by clicking the *browse* button next to the color sample. You can animate its color with the next to the numeric color values.

Advanced You can change your light into an infinite, local, or spot light in the Fixed Properties area. To access more advanced settings click on the *Advanced* button.

Advanced Light Properties Dialog



You can set several important lighting properties in the Advanced Light Parameters dialog. For *Local* and *Spot* lights you can set the light's range. These lights have a steady brightness out to a certain distance called the *Inner Radius*. Beyond that distance the light's strength gradually diminishes until at the *Outer Radius* the light has no effect at all.

Spot lights are basically cones of light projecting from a point. You can set the angle of the cone and how sharply it falls off to the edge. Within the *Inner Angle* the spotlight has full brightness. Outside that angle the light's illumination gradually weakens until the *Outer Angle* where it had no further effect.

Shadow Properties of Lights

By default, lights do not cast shadows. You enable shadow casting by checking a light's *Cast Shadows* checkbox.

Shadows in the real world are not totally dark. Some light is scattered off of nearby objects into these areas. You can illuminate the shadows in Anim8or as well with the *Percent Dark* parameter. This only allows diffuse light into shadows so that there are no shiny highlights, which would appear unrealistic.

There are two main kinds of shadows, volume and ray traced. You select which kind you want your light to cast in this dialog. *Ray Traced* shadows can cast soft edges. You control how soft the shadow is with the *Size* parameter. For infinite lights this is the angle that the shadow spreads from the edge of an object. For local and spotlights this is the physical size of the light. Objects closer to these lights will cast softer shadows than those further away.

You can set the minimum and maximum number of samples used to calculate soft shadows in this dialog as well. The section on Shadows has more information on using shadows.

Related topics

■ [Shadows](#)

Shadows

Shadows are a very important part of an image. They can also consume an enormous amount of computer time. It's important that you understand how they work or you may waste a lot of time waiting for your images to render.

Shadows are only visible in rendered images made from the *Scene Editor*. They are only cast from *Lights* that are added to a Scene, and are only cast by a chosen *Object*.

To add shadows to your Scene:

1. Switch to the Scene Editor.
2. Add your own light and check the *Casts Shadows* box in the *Advanced Properties* dialog.
3. Set the objects to Cast and Receive Shadows in their Properties dialogs.
4. Enable Shadows in the *View->Preferences* dialog.
5. Render an image or a movie. Shadows are not visible in the working views, only in a rendered image.

Volume Shadows

Volume shadows are usually much faster to render than ray traced shadows but they have some limitations. They have hard edges and you cannot use them to cast soft shadows. This tends to make your images look unrealistic.

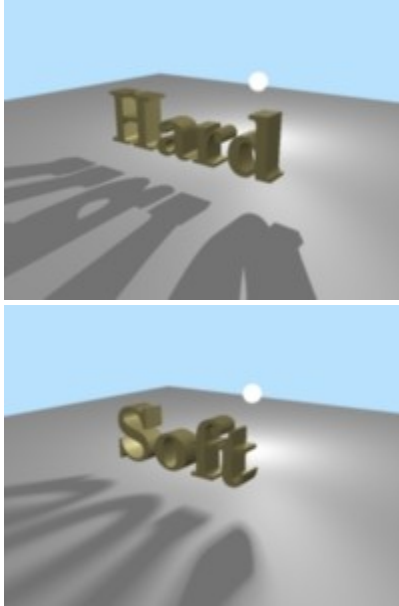
A bigger limitation is that you cannot use volume shadows to cast shadows from within an enclosed object such as a jack-o-lantern. While this is not a problem in most scenes it can cause you some unwanted "surprises" if one of your lights moves into an area enclosed by a single object. You can work around this problem by splitting the object into two or more pieces, or by using a ray-traced shadow for the offending light.

Ray Traced Shadows

Ray traced shadows are the most versatile. They can also consume a very substantial amount of time to render.

Ray traced shadows can be either hard or soft. *Hard* shadows have a very distinct boundary between what is inside the shadow and what is outside. Your shadow from the sun on the ground is an example of a hard shadow.

Soft shadows don't have a distinct boundary. Instead the amount of light gradually lessens until the shadow reaches its maximum darkness. The shadow cast by a florescent light is an example of a soft shadow. Such shadows are soft because the apparent size of the light casting them is large. As shown below soft shadows can be much more realistic:



Soft shadows are costly to computer. Many individual shadow samples are used to make a soft shadow. Anim8or therefore limits soft shadows to *Anti-Aliased* images where multiple image samples are used for each pixel. High quality soft shadows often require even more samples than Anim8or uses for anti-aliasing. To limit the total cost of these computations, Anim8or adapts the number of samples to the image as it is being rendered. If there is nothing "interesting" in an area then only a few samples are taken. If a shadow edge is detected, however, more samples are taken to improve the image. You can set the minimum and maximum number of samples used for each light in the Advanced Light Properties dialog.

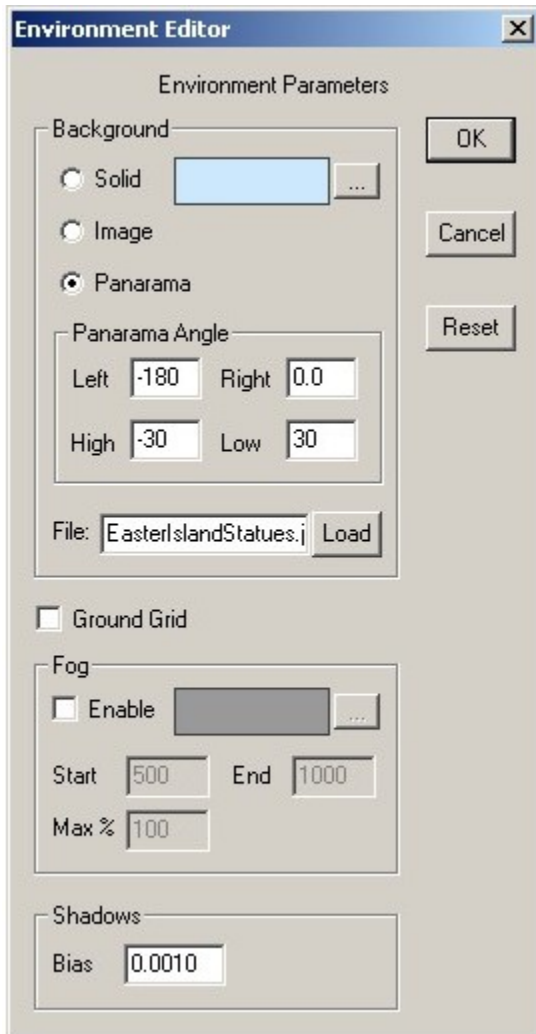
In general, you will need to set the number of samples higher for larger sized lights that cast soft shadows. You will also have to increase the number when a light is very close to an object since this will magnify it's shadow's soft part.

Related topics

■ [Light Properties Dialog](#)

Environment Settings

You can use the Environment Settings dialog to control several things in a *Scene*. You can add a background image which can either be a fixed image, or a panorama that moves as the camera pans. You can also add fog effects. Open it with the *Settings->Environment* menu command.



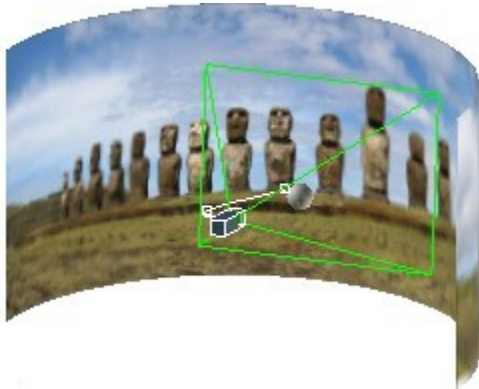
In the *Background Area* you can set the background for your scene several ways. By default it is a *Solid* color. You can change the color with the browse button next to the color sample.

Load You can also use a *Fixed* image for the background. To do this select the *Image* option and load an image to the *File* field with the *Load* button.

You can also use an image as a *Panorama*. The image is wrapped around a scene in a big arc. When the camera moves it will pan across the background.

Set the area that your background fills in the *Panorama Angle* area. Be careful not to aim the camera past the edges of the panorama or the background color will show. The diagram below shows how this works.

Note: backgrounds only appear in the *Camera View*.



You can remove the default ground grid from a scene by unchecking the *Ground Grid* box.

Distant fog can add realism to a scene. It is useful for underwater shots as well as distant outdoor views. To allow it check the *Enable* box in the *Fog* area. You can set fog color, the distance from the camera at which fog will *Start* to appear, and the *End* distance where it has maximum saturation. You can also limit the *Maximum* effect of fog so objects won't disappear entirely in the distance.

Shadow Bias is an advanced technique used to hide ugly rendering artifacts that can appear when shadows are used. These artifacts are caused because the lighting computations assume that your models have smoothly curved surfaces. In reality they are made of flat faces. Shadow computations are based on these flat faces and don't always get along with the lighting computations.

To overcome this discrepancy, a shadow bias is used to push shadows slightly back away from the viewer, then everything looks fine. Normally the shadow bias shouldn't have to be changed.

Scene Time Track

At the bottom of the window is the *Scene Time Track*. If it isn't visible on the screen, select the *Options->Track Window* menu item:

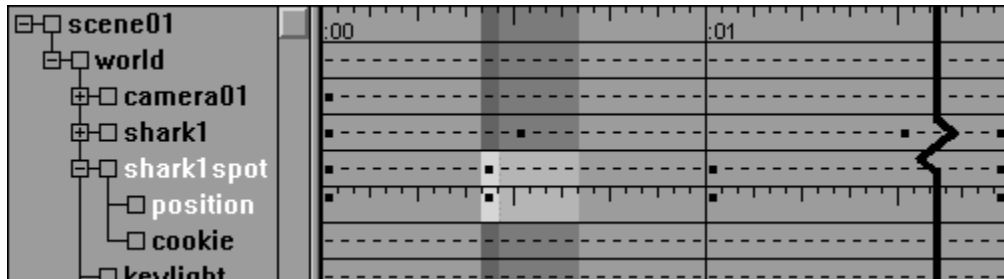


On the left is the scene's title. It is the top of a tree description of the elements that make up your scene. If you click on the "open" box you can expand the window to show the objects contained in the scene.

You can change height of the expanded track window by dragging the horizontal resize bar up or down, and the width of the name field by dragging the vertical resize bar to the right or left.

The right part of the track is a time line for the scene. If you click on it, the display will switch to the time you selected. Each tick mark represents one frame. Seconds are marked with full vertical lines. Normally there are 24 frames/second but you can change this to other frame rates with the *View->Preferences* dialog. The current frame is highlighted in dark gray.

You can click and drag the mouse it will select a range of frames. Use Shift-Click to select a new frame range while still keeping the same current frame.



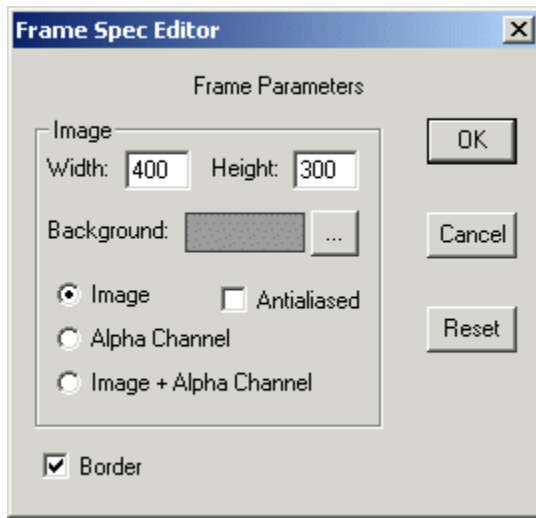
When expanded, the left part of the track shows the objects in your scene. There is a lot of useful information here. You can see what an object's parent is, what properties have been animated, which bones can be rotated, and such. In the view above the highlighted object shark1spot's parent is the world. Its location is animated and it has a child object called cookie. If you see an "open" box by an item then it has more information that you can display by clicking on the box.

You can select and edit items shown in the name section of the track by clicking and double clicking on them. Mouse buttons have their normal meanings with the right one adding to the selection and the middle one subtracting. Double clicking is how you can edit the numeric value of animated properties like an element scale that does not appear in a dialog.

Related Topics

■ Visual Quality

Previewing Images, Rendering AVI



Previewing Images

Preview a software rendered image of any view using the *File->Preview* command. The dialog shown on the right will allow you to set the size and background color of the image and set it to Anti-Aliased.

You can also use the *Render->Preview* command to do this in the *Scene Editor*.

Rendering an AVI Movie

To render an .avi movie, display the camera's view on the screen by selecting *View->Camera* and then *Render->Render to File*. Select AVI and any other settings you prefer, and Anim8or will render your movie.

The Alpha Channel

When you render an image, you can isolate the elements in your scene from the background. You can save both the images of your elements and a mask showing where they are. This mask is called an *Alpha* channel. It's really nothing more than a black-and-white image in the shape of your elements. It has a value of 0 where your elements are drawn, and 1 where they aren't. Transparent parts and edges in anti-aliased images will have a value in-between representing how much of the pixel your elements "own". You can use the alpha channel to combine images made in Anim8or with other images in a paint-program, as you will see below.

You make an alpha channel by selecting the "Alpha Channel" button in the preview dialog.

You can also make two very useful images with one rendering by selecting the "Image + Alpha Channel" button. One is an ordinary alpha channel and the other is a special element image that has been pre-multiplied by the alpha channel. It shows your elements normally but is black where your elements are not. Partially transparent parts of your elements are dimmed to the degree that they are transparent. You can then use these two images to merge your Anim8or elements into another computer generated scene, or an ordinary photograph. You can see how this works in the following composited image example.

Step 1: Multiply photograph by alpha channel:



Photograph

X

Alpha Channel

=

Masked Photograph

Step 2: Add Anim8or image to previous result:





Masked Photograph + Pre-multiplied by Alpha = Final Composite

Using Alpha Masks

To mask an Anim8or generated image into an existing photo using the Alpha channel and *Paint Shop Professional*:

1. Render an image with image+alpha channel selected.
2. Save both the image and alpha image as .bmp or .jpg files.
3. View them in PSP with your background image there as well.
4. Use the Image->Arithmetic command as follows:

First multiple the mask with the background image. Set the divisor to 255 to make the lever right. Call this Image A. Then add Image A to the 3D model with a black background. Set the divisor to 1 this time. The result should be what you want.

Note: It's easier to do if all the images are the same size.

Animation

You can animate the elements of a *Scene* by setting their location, color, size, etc. in a few *Key Frames*. The computer supplies the remaining values between these *Keys*. You can take more control of how things animate by adding more keys. Besides their basic value, some keys have additional properties that you can edit for further control.

A *Segment* is the values for a range of frames between two successive *Keys*. You can change how fast things move between key values by editing the properties of segments.

Animation with Key Frames



You can animate an element by simply moving it on the screen. First enable animation by clicking the *Animate* button. Its background turns green indicating that you are now animating. Change to a new frame by clicking on the frame in the *Time Track*. Then select an element and move it to a new location. Anim8or will add *Key Frames* for the element's location in these two frames and smoothly fill in the locations for all frames between these *Keys*.



When you press the *Play* button your element will now move!

You will also notice that a *Spline Path* has been added to the scene. This is the element's path through space. You can add more points at different frames to build complex motion.



You can also edit the shape of the splines by clicking on the *Edit Path* button on the toolbar.

Editing object positions is described in more detail in the Sequence Editor chapter. But there are a few things to note:



When the Animate button is off (gray) any change made will apply to the entire scene. If you move the camera, for example, it will move the same amount in every frame. When the Animate button is on (green) changes made will only apply to keys in the current frame. In-between frames will reflect these changes.



When moving or rotating an element that is a child of another element, the change is relative to its parent. The same is true when you rotate an element that faces its path of movement. The change is relative.

You can edit individual *key values* by double clicking on the key in the Time Track. See the Animating Figures with Sequences section for more details.

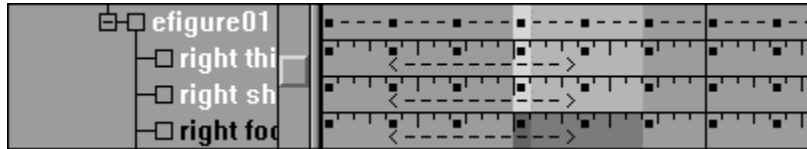
Related topics

 [Animating Figures with Sequences](#)

 [Time Track](#)

Animating Figures with Sequences

You can animate a *Figure* by adding an entire *Sequence* of key positions. If you make a sequence that represents one cycle of a walk it can then be added to a scene several times to make a longer walk. Sequences are shown in the track bar by <---->. The track below shows a 31-frame sequence for three joints:



Sequences in a scene are linked to the *Sequence Editor*. Any change made to a sequence automatically appears in a *Scene*. So you can't modify keys that are part of a sequence in the *Scene Editor*. If you try Anim8or will ask if you want to convert that particular reference to the sequence into individual keys and continue. Converting a sequence in the Scene Editor will not alter the original sequence and the link between the sequence and scene will be lost, so further editing of the sequence will not affect these keys of a scene.

Controllers

Controllers manage *Key Values* for animation in the *Scene Editor*. When you move, rotate or animate any aspect of an object that uses a key, a controller is created to hold that key. Each controller manages just one aspect of a scene. For example, one for the location of an object and another for the color of a light. Controllers contain all the keys regarding this *value* and any related data.

If an aspect of an object is *constant* for the scene, and not animated, it will not have a controller. The one exception is for *bones*. They always have a controller for each axis of a joint that can bend. This makes it easier to find the bones that can move when posing a figure.

Controller Types

There are several types of controllers. Each uses a different kind of data, or computes in-between values in a different manner, depending on the needs of the property that is animating.



Float: This is an ordinary number like 10.5 or -150. Like most controllers, in-between values are smoothly interpreted.



Point3: Point3s return 3 numbers per frame. Each value is smoothly interpreted without regards to the others. Use these for positions and RGB colors.



Orientation: An orientation controller returns a rotation per frame. They can set the orientation of an object or can be used for a rotational direction. When you edit these values in a dialog you see the PYR (pitch, yaw, roll) equivalent to the orientation.

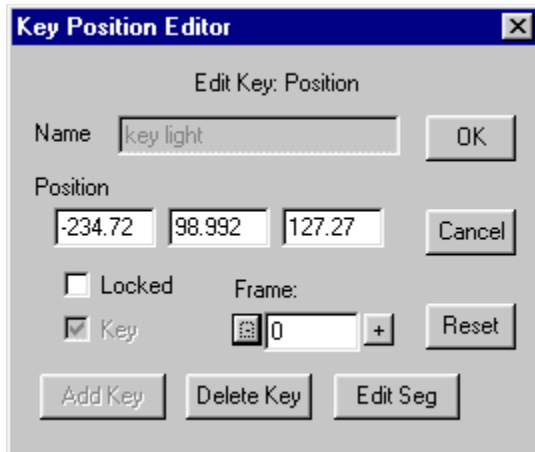
Orientation is more complicated than it seems. Interpreting angles smoothly does not result in the smooth rotation of a model. The order in which pitch, yaw and roll are applied is also important. Anim8or uses PYR, because by applying roll last you can set it to 0 and the elements stay "upright". It is often easier to ignore the numeric values for orientation and simply orient it on the screen.



Boolean: Boolean controllers return a "yes" or "no" value. You can use them for an object's visibility if you want it to suddenly disappear. There is no "maybe" value for a Boolean.

Editing Keys

Edit a key by double clicking its key indicator in the Track, or by clicking the button for its controller in an element's properties dialog.



You can edit a location key's X, Y, Z values and *Add* or *Delete* keys in the *Key Position* dialog box.

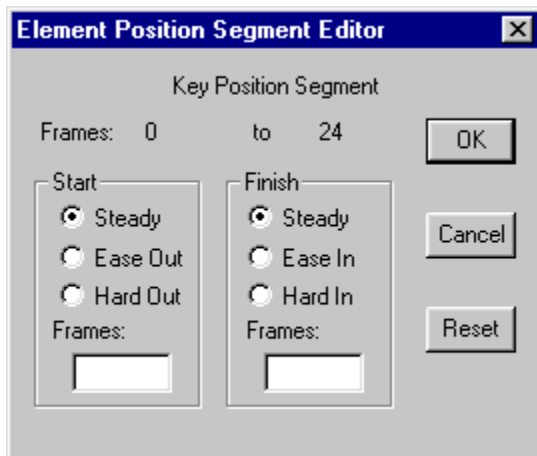
Entering a *Frame* number lets you move to any frame in a scene, and clicking on the + and - buttons move to the *Previous* and *Next* frames. In-between frame values can be viewed but not changed. Anim8or supplies these values.

The *Edit Seg* button allows you to edit the segment next to the current frame.

Editing Segments

Oops! Segment properties didn't quite make it into this release. These values won't do anything ... yet. If I get them working soon I'll make a new release but in the mean time you'll just have to be patient. Sorry!

By default values vary at a consistent rate between keys. But this is not always what you want. How quickly a character reaches full speed when starting to move, or how long it takes to slow down when stopping, are important elements in animation. We normally think of small, lightweight objects as accelerating rapidly to full speed, but large or heavy ones as taking a long time to build up steam. In animation terms something is said to ease out and ease in if it is slow to start and stop.



By editing the segment's properties you can change the speed a value changes in several ways. You can set the number of frames that it takes an object to change speeds, size, color, etc. at the start or end of a segment with the ease in and ease out settings. You can also select the opposite: hard out and hard in where you might want an object to accelerate at the end just before it splats into a wall to increase the visual effect.

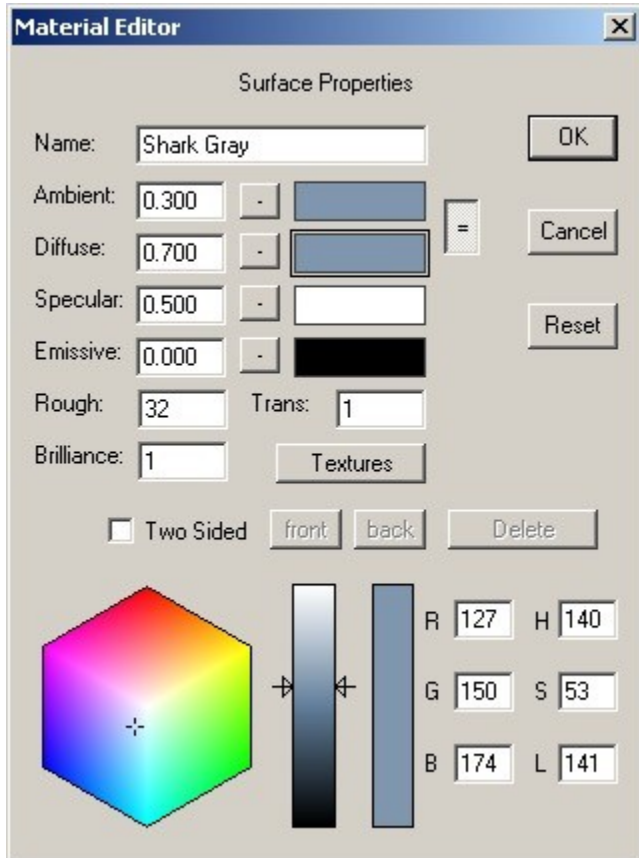
Materials

Every visible surface has a material. By changing their various properties you can set the look of figures and objects. Materials provide a richness and detail that adds considerably to the realism of a scene. You can make them shiny, dull, transparent and opaque. You can texture a surface by using an image as the material's color or to lighten or darken its basic color. You can also use a texture to control the transparency.

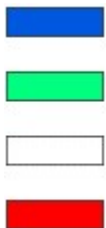
You can't really design the look of a scene with materials alone thou. Its ultimate appearance also depends heavily on the lighting you choose.

Material Editor

Use the basic Material Editor when you need to design the color, texture, transparency and other visual properties of an objects appearance. You can open the material editor either by double clicking on a material in the material toolbar, or from a specific object's editor dialog. An example is shown below.



Some of the entries should be fairly obvious to most of you. Others can probably use a bit of explanation, so there's a short description of them in the following table. You can see how each property affects the look of the sample material shown below. Its parameters are all set to the defaults shown above with just a single value changed for each one. Ambient and diffuse are not locked together. The base colors are:



Ambient: R=0, G=92, B=224:

Diffuse: R=0, G=255, B=128:

Specular: R=255, G=255, B=255:

Emissive: R=255, G=0, B=0:

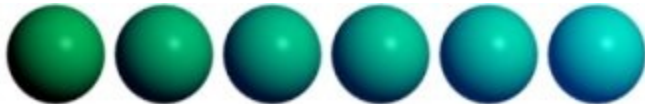
Name

The name of the material. This field can be left as the default "material00", but it is a good idea to give each material a useful name.

Ambient

The ambient component is the color of a material in a shadow. Normally you want it to be the same as the diffuse component. In fact this is so common that there is a button that will lock all ambient and diffuse values together so you don't have update them both to make changes.

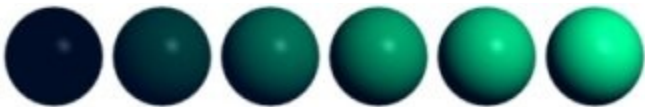
The number to the left is how much ambient component adds to the final color. The normal range for the ambient weight is from 0.0 to 1.0. The row of materials below have an ambient value ranging from 0 on the left to 1 on the right:



Diffuse

The diffuse component is what you would normally call the "color" of a material. It is combined with the amount and color of light illuminating your model and added to the final color.

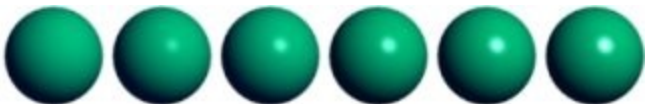
The normal range for the diffuse weight is from 0.0 to 1.0. These samples vary the diffuse value from 0 to 1:



Specular

The specular component is part of the "shininess" contribution. You normally set this color to white to reflect the light's color. For metallic surfaces you should change the color to something closer to the diffuse color.

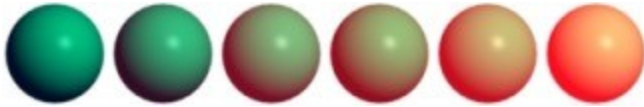
The normal range for the specular weight is 0.0 to 1.0. These samples vary the specular value from 0 to 1:



Emissive

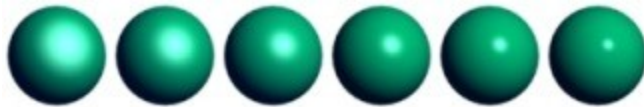
The emissive component represents light generated by a material. It is not affected by lighting. You use this for things like lava and eyes that glow in the dark.

The normal range for the emissive weight is 0.0 to 1.0. The default value is 0.0 to prevent glowing. These samples vary the emissive value from 0 to 1:



Rough

The roughness of the material. A higher value makes the surface look shinier. It is tempered by the value of the Specular component. Values range from 1.0 (not at all shiny) to 100. These samples vary the value from 2 to 64 by multiples of 2, and have the specular weight increased from 0.2 to 0.6 to show the changes better:

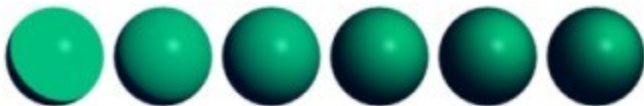


*Trans**

The transparency of the material. Actually, it's the opaqueness of the material. 1.0 is fully visible, while 0.0 is completely transparent (but still shows specular highlights). Low values like 0.1 and 0.2 make glass. You must enable Transparency in both the *View->Preferences* dialog in the OpenGL Workspace and the File Output areas for transparency to show. It also helps to enable *Options->Backside* visibility for the OpenGL Workspace.

*Brilliance**

The brilliance factor. This setting changes the appearance of the diffuse component. Normal objects have a value of 1.0. If you increase it by a small amount to 1.5 or 2.0, the material takes on a sort of metallic sheen, or for brighter colors, a deeper, richer appearance. A value less than one flattens the look of the material. Here the value of brilliance changes from 0 to 2.5 in steps of 0.5:



*Note: Transparency and some more advanced texture modes may only affect rendered images. Its final effect can only be partially shown in interactive sessions. Some graphics cards can show more than others, depending on which features they support. You can render a test image to see how the final model looks.

Textures

The texture button opens the general texture dialog for this material. You may use several textures on a single material, changing the diffuse color, transparency, emissive color, and more. You can also apply a bump-map texture. See the Texture Selector section for more details.



The Two Sided checkbox gives the material a different material for its front and back sides. The front and back buttons show which side's properties are currently displayed.



This button deletes a material. You will be notified if it is currently in use and given a chance to cancel the delete.



These four color patches show the current value for the ambient, diffuse, specular, and emissive colors. The currently active one is outlined and the lower part of the window shows its numeric value. You can change the active color to a different patch by clicking on it.



These buttons show you if a particular component uses a texture. If the button has a "T" on it then it uses a texture. If not then it doesn't. You can click on a button to set a particular texture.

Related topics

 [Texture Selector](#)

Material Settings

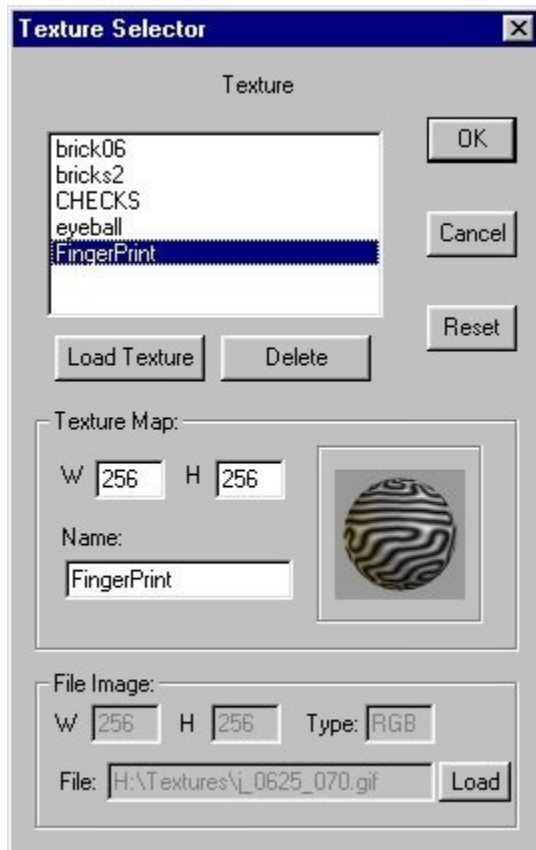
A few simple material images and their settings are shown in the table below. Notice that the values for Pearl are out of the normal range. The ambient weight is more than 1, the diffuse is negative (which means lights actually darken a surface), and the specular value is way more than 1. Don't be afraid to experiment!

Sample						
Material	Copper	Rubber	Brass	Glass	Plastic	Pearl
Ambient	0.3	0.3	0.3	0.3	0.3	1.5
Diffuse	0.7	0.7	0.7	0.7	0.9	-0.5
Specular	0.6	0.0	0.7	0.7	0.9	2.0
Rough	06	N/A	8	32	32	99
Brilliance	1.8	1	2	1	1	1
R	228	3	228	199	0	255
G	123	139	187	227	19	138
B	87	251	34	208	252	138

Texture Selector



The texture selector allows you to load, view and manage the textures used in an animation. You open this dialog from within the material editor with one of the 4 property browse buttons. An example is shown below right:



You can change the name of the texture in the *Name* field and view the size of the image Anim8or uses to store it in the Texture Map area.

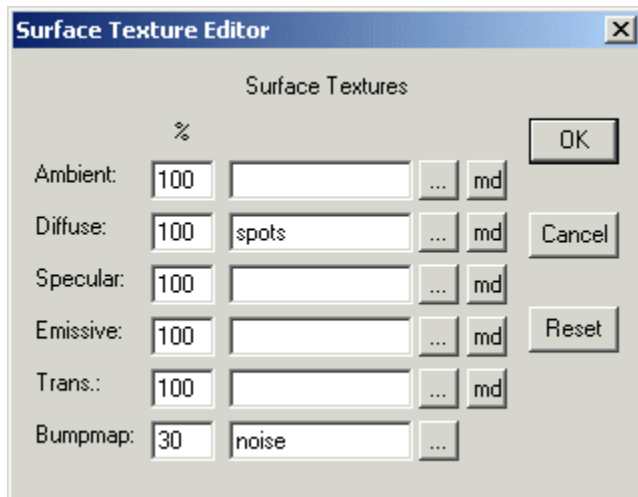
The File Image area gives information about the file containing the texture. The *Type* field can be either RGB for normal images, or RGBA for .gif files with a transparent color. If your texture is type RGBA then you have more flexibility in what you can do with it.

Advanced Textures

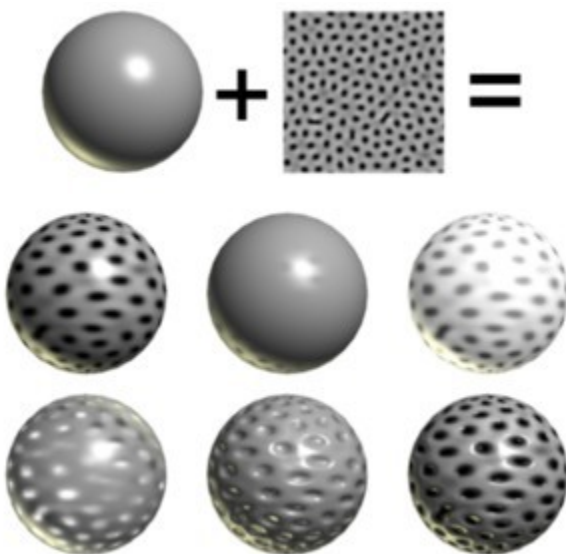
You can use textures for more than simple diffuse color maps. For example, you can map the transparency or shininess of a material to a texture. You can also use multiple textures on a material.



Basic textures can be selected directly from the Material Editor but you need the more advanced *Surface Texture Editor* for more exotic uses. Open this dialog by clicking the Textures button in the Material Editor dialog:



The example shows a normal diffuse texture named "spots" and a bump-map texture named "noise". The net effect is a bump-mapped, spotty material. The following image shows some of the surfaces that you can make with a simple gray color and a single spotted texture:



The top row shows the basic gray color and simple spotted texture used for all the spheres. The first sphere on the middle row simply uses the texture as the diffuse color. The next sphere uses it as the specular map. Notice the faint spots where the surface isn't shiny. The last has an emissive texture. Note that the emissive weight must be set to something other than 0.0.

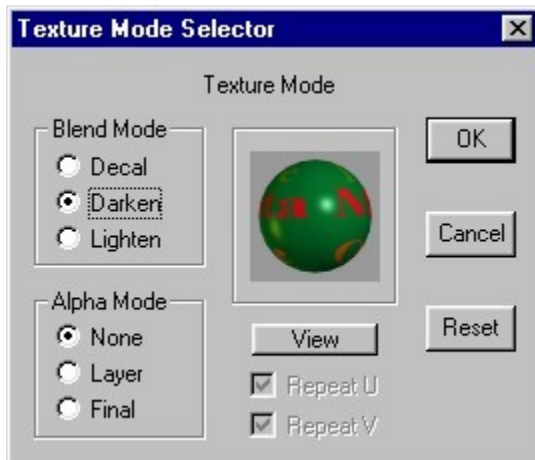
The bottom row shows the same texture used as a transparency map, and a bump-map. In the final sphere as both the diffuse color and bump-map. You can often use the same texture in this way to create a bump-map. It doesn't always work, especially when there are strong shadows on the image. Here are some more examples where it works:



Texture Mode

md

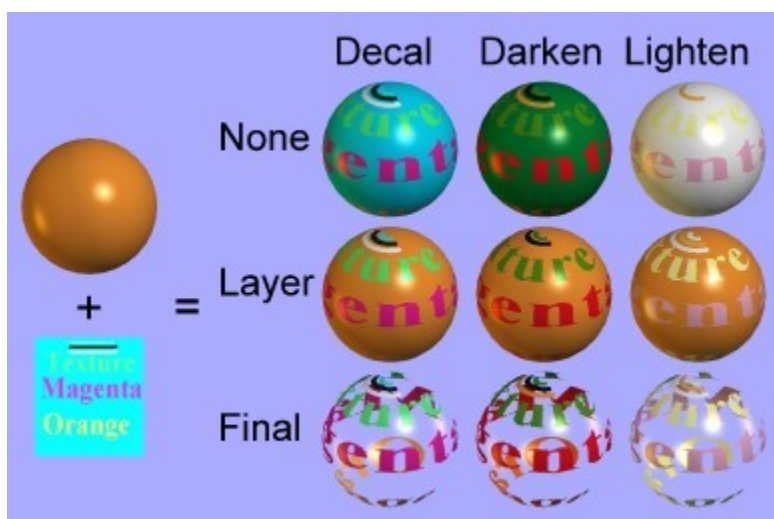
You can blend textures with the base color of a material in several ways. Textures with an alpha channel are even more versatile. You set the way textures behave in the texture mode dialog, which is reached through the *mode* button in the *Surface Texture Editor*.



Use the *Blend Mode* to control how the color of a texture changes the base material color. *Decal* simply replaces the color with the texture. *Darken* multiplies the value of each color component which tends to darken the image. *Lighten* adds the two values which can only make the image brighter.

If the texture has an alpha channel (like a transparent .gif) they you can use it in three different ways by setting the *Alpha Mode*. *None* simply ignores the alpha. *Layer* uses the alpha channel to blend between the texture's color and the material's color. *Final* uses the alpha channel as the material's final transparency value.

Here is an example of what can be done with one texture and one surface color. The cyan (light blue) color of the texture is the transparent color in a .gif file:



Note: These types of materials will not always look like this in your interactive viewports. Different graphics cards have different capabilities. If you want to be sure what your model will look like it's best to occasionally make a preview image.

Some aspects of a texture mode are only meaningful for certain texture uses. For example bump-maps don't use an alpha channel so Alpha Mode doesn't have any effect on them.

Make .x Files

Anim8or cannot export directly to .x file format. But you can export objects as .3ds files and use the Conv3ds program provided free by Microsoft to convert them into .x files.

Conv3ds is a utility to convert .3ds files to .x files. Export to .3ds and run this utility, then use in whatever Direct X fashion you want. It can do animations with the -A option, but Anim8or doesn't currently export .3ds animation keyframes. You might need to specify the -m option to get it to work.

Sometimes Conv3ds fails with strange error messages. You can try setting the menu flag *Options->Debug->Dummy 3DS KData* which can help in some cases.

Conv3ds Options

- m Output 3ds model as a single mesh and not a frame hierarchy
- A Include animation data in X files
- T Wrap all hierachies in a top level frame
- e "extension" - Change extension of texture map files
- M Don't include material data in X files
- N Don't include normal data in X files
- f Don't include frame transforms in X Files
- h Don't try to resolve keyframe hierarchy
- c Don't include texture coordinates in output
- r reverse winding order for face and normal information
- t Don't include texture mapping information in the X file.
- z float - Specify a face color alpha delta between 0 and 1
- Z float - Specify maximum alpha value to be affected by delta
- C Don't change black textured faces to white textured faces
- p Don't use the 3ds specular color for materials
- o "filename" - Name output file.
- s float - scale the meshes by the given factor
- x - save out as text X file
- X - save out templates in X files
- v integer - Verbose mode

Particles

Anim8or doesn't support particles, yet :-). But rounder, an Anim8or user, has written a particle generator called Anitweak that outputs .an8 files that can be used by Anim8or.

You can get a copy here:

 <http://www.biederman.net/anitweak>

wglMakeCurrent() Failed

This is caused by a failure in your graphics card's driver software. When you see this the OpenGL 3D graphics library did not run properly. There should be an error number beginning with "0x" and for common causes there will be an error name like ERROR_INVALID_PIXEL_FORMAT giving an indication of what failed. If the error shown is "ERROR_???" appears send me the error number if you like so I can add it to the error message table for future releases.

Normally the only way to fix these errors is to update your graphics card's driver. Sometimes you can get around the problem by changing the color depth, or "bits per pixel", of your screen, etc.

If you have a Voodoo card see:

■ [Voodoo Graphic Card Problems](#)

Viewports Don't Draw Correctly

The most common cause of the viewports not properly drawing is your graphics card and its driver software. The best thing you can do is to download and install the latest driver for your graphics card.

Anim8or uses many more features of the OpenGL graphics library than any game does. The primary focus for 3D cards is gamers so graphics card makers always make sure games work before releasing their products. Unfortunately they don't spend the same amount of effort on the rest of OpenGL. They do keep improving and releasing newer drivers, however, so chances are there's a better one waiting for you now.

Voodoo Graphic Card Problems

The 3DFX series of Voodoo work with Anim8or if you have one of their good OpenGL drivers. Many people have reported problems with the new 1.07 DX8 driver and Anim8or. They have solved this by reverting to previous 1.06 DX7 driver. I don't know when, or even if, this will be solved given the current state of 3DFX. If you have a Voodoo, I suggest that you get a copy of both of these drivers and keep them in a safe place.

Missing Textures

1. The most likely reason that texture are not showing up is that they are disabled. This is true for both the working viewports and for any rendered images. To fix the problem, select the *View->Preferences* command from the menu. Make sure that Textures is checked in both the OpenGL Workspace area and the File Output area. You also probably want to check the MipMaps box in the OpenGL area, too.

2. Your objects also have to have texture coordinates assigned for textures to work. Most things built in Anim8or will have default values assigned for you. If not, or if you import something that doesn't have texture coordinates, you can add them with the UV Texture tool.

3. Another reason that your textures may be visible is your graphics card. Each card has a maximum size that it can use to store textures. On some, such as the VooDoo 3000, the limit is 256x256 textels. If you reduce the size of these images using any paint program you can use then on such cards.

On rare occasions these boxes become un-checked for no apparent reason. I think the problem is in Anim8or but I have been unable to find the cause. So until I do, if it happens again just go back and check them again.

Saved .an8 File Won't Load

If you can't reload a .an8 file after you have saved it there are several things that you can do to try and save your work. The file is written as an ordinary text file so you can load it into any text editor and look at it. The most common problem is that the file has been truncated. When this happens you can delete the end of the file until the braces are paired (to the point where a closing brace is not indented) and the file might load.

Note: There was a bug in version 0.7 that could cause a file that is *exactly* one character longer than the input buffer to fail to read. In this case simply add an extra blank line at the end to fix the problem. This has been fixed in v0.8.

Transparent Object Not Transparent

Make sure that the Transparency box is checked in both places in the *View->Preferences* dialog. The working views are only approximations of what your object will look like when rendered. Multiple layers of transparency is too computationally complex to do fast enough for the working views with current 3D hardware. To see the final result you need to make a test rendering with *File->Render Preview*.

Making AVI File Problems

There is a problem with the .avi compression library in Win98 that can cause Anim8or to report an error when you try to create an .avi movie file. You can usually solve this by choosing a different codec (image compressor). There are also some newer codecs available for free on the web. Several people have reported that the Intel Indeo codec solves this problem. Anim8or should not crash but should catch any error and recover. If not let me know and I will see if I can fix it.

The following codecs should work with Anim8or v0.7 and later:

Codec	Win 98	NT 4.0	Win 2K	Win ME
Divx (Recommended)	Yes	Yes	Yes	Yes
Intel/Lycos Indio 4.x	Yes	Yes	Yes	Yes
Intel/Lycos Indio 5.x	Yes	Yes	Yes	
Cinepak	Yes	Yes		Yes
Microsoft Video 1	Yes	Yes	Yes	Yes

The Divx codecs are of particular high quality. They are available on the web at no charge from:

 <http://www.divx.com>

The Indeo codecs are also fairly good. You can find them at:

 <http://www.ligos.com>

