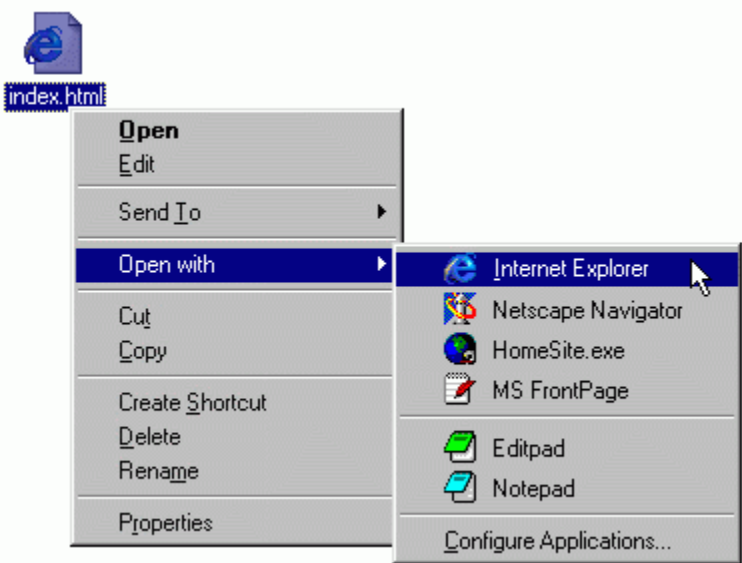


Welcome to OpenExpert

OpenExpert adds "Open with" to the context menu of any chosen file type, using any applications you decide. So you can easily open your graphic files with your favorite paint program, or view your HTML files in either Netscape or Internet Explorer, just with a few clicks of the mouse.



License Agreement

Copyright © 1998-2000 by BAxBEx Software
All rights reserved.

OpenExpert is free for use at home.

For commercial use (companies, government, etc.) you have to purchase a licence if you want to use OpenExpert beyond a 30 day evaluation period. The licence fee is US \$20 per copy.

Support:

OpenExpert is free for non-commercial use. However to take advantage of the free support by email, you have to purchase a licence. Commercial users are automatically entitled to free support by email.

LIMITED WARRANTY

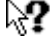
OpenExpert is provided "as is" without warranty of any kind, either express or implied, including, but not limited to warranties of merchantability or fitness for a particular purpose.

In no event will BAxBEx Software be liable to you for any damages, including incidental or consequential damages, arising out of the use of the program, even if advised of the possibility of such damages.

You acknowledge that you have read this license, understand it and agree to be bound by its terms as the complete and exclusive statement of the agreement between us, superseding any proposal or prior agreement, oral or written, and any other communications between us relating to the subject matter of this license.

Legal domicile is Dorsten, Germany.

Quick Help

When you click this button, a question mark is attached to the cursor  and you can click any item in the dialog box to display a brief help text.

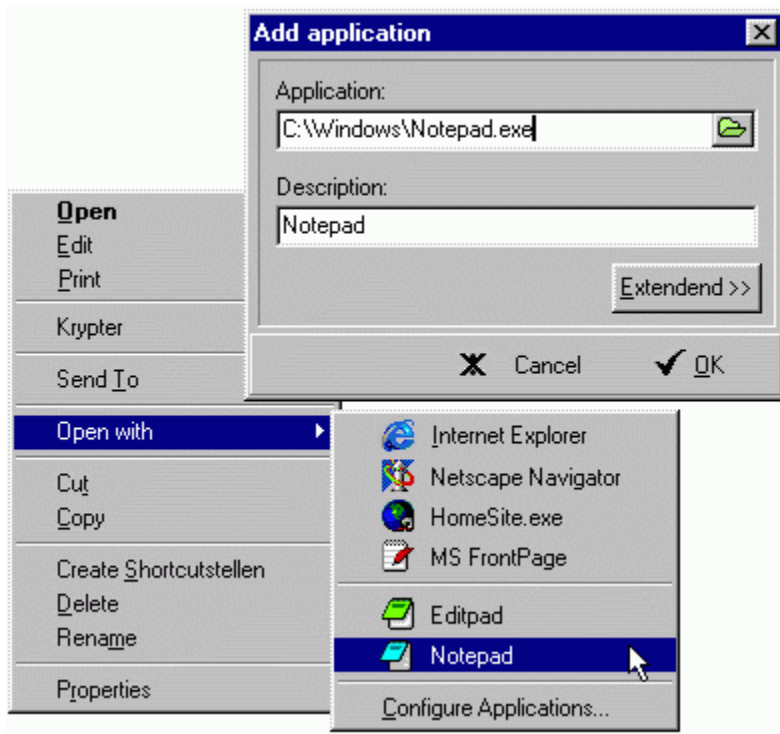
- Choose applications for a given file type
- Choose applications for ALL file types
- What's the "Show all Programs" Button for?

Choose applications for a given file type

Instead of being restricted to a fixed association of a file type to only one application, OpenExpert adds an "Open with" item to the context menu of the chosen file type with all the applications you decide.

Choose applications for a given file type:

1. Open the Windows-Explorer.
2. Right-Click your file, select "Open with" and click on "Configure Applications"
3. In the configuration click "Add" to add an applications within this dialog:



Choose applications for ALL file types

In the register "All extensions" you can optionally add programs which appear in every OpenExpert menu.

Show all programs

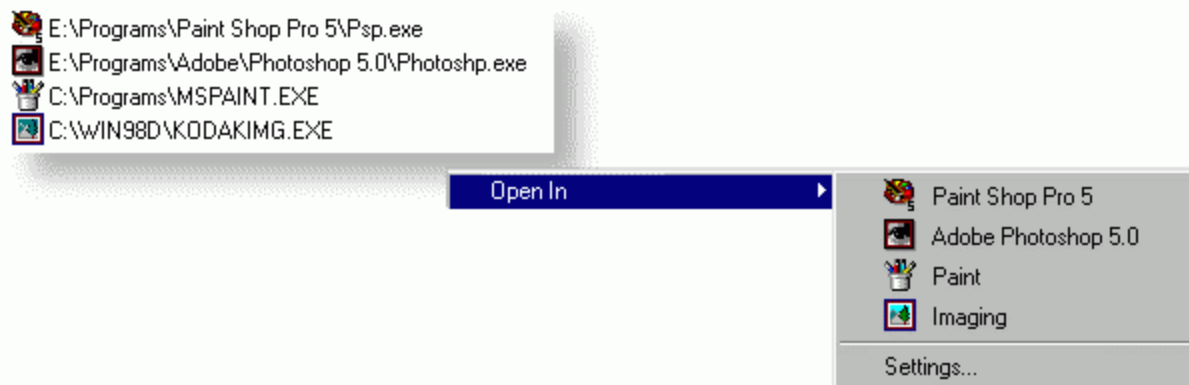
The "show all programs" command shows a list with all applications you've added to the program list of any extension. You could use Drag & Drop to add these programs to another extension.


Displays the currently selected file extension.

Please visit our Website at www.baxbex.com to get more free- and shareware.

Program list

The programs listed here are shown in the same sequence in the **Open in** cascading menu in the context menu, see the sample below.



 **Tip:** You can open the **Add** dialog by double-clicking into the empty space below the program list or by clicking the **Add** button. Click on the arrow symbols

 to move the program names up or down in the list above.



Up and down arrows

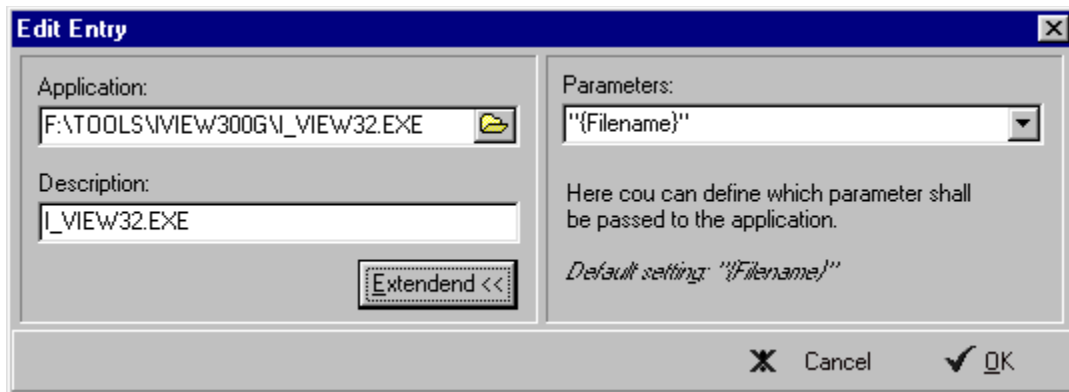
Click on the arrows to move the program names up or down in the list above. This is the order that is shown in the cascading menu **Open in** of the context menu. When you move the cursor over an arrow, it changes its **color**...



Tip: You can also change the program order by using drag-and drop.

Add Program

Click this button to open the dialog box shown below. The extended section is only displayed when selected and can be hidden again.



Clicking on the folder icon to the right of the **Application** field opens the standard windows **open** dialog. To change the parameter that is passed to the application (default: "filename"), click on the arrow to the right of the **Parameters** field.



Tip: You can also open the **Add** dialog by double-clicking into the empty space below the program list.

Remove a program

Select an entry from the list and click **Remove** to delete the program from the list.

Show all programs

The "show all programs" command shows an list with all applications you've added to the program list of any extension. You could use Drag & Drop to add these programs to another extension.

Please visit our Website at www.baxbex.com to get more free- and shareware.

