

## Registry Toolkit Merge Help



Registry Toolkit Merge<sup>®</sup> is a companion program to our [Registry Toolkit](#) utility. Registry Toolkit is a multipurpose tool to edit and perform search &/or replaces in the Windows registry. Registry Toolkit Merge is command line utility that imports .reg files into the Windows registry via a self-contained .exe. While .reg file import can also be accomplished with Registry Toolkit (and other tools), Registry Toolkit Merge is unique because it can be used to create self-contained, self-importing .exe's. When the .exe you construct is clicked on the .reg information is imported [after confirmation](#). The registered version has an option to disable the confirmation by running the program with the /s (or /S) switch. See below for more information.

Also unique to Registry Toolkit Merge (and Registry Toolkit) are special .reg file functions to:

1. Delete keys (and keys/values/data under them)
2. Copy keys (and keys/values/data under them)
3. Rename keys
4. Copy specific values from one key to another.

Performing these operations via a .reg file is not easily accomplished using other registry edit tools.

Five example .reg files are included in the Registry Toolkit Merge Distribution (see below). Back up your Windows registry and examine the .reg files with your text editor before you experiment!

Some additional information about the special syntax is below.

**Important:** Do not attempt to merge these examples with another registry editor. Use only Registry Toolkit Merge or Registry Toolkit. 'Example\_CreateTest.reg' is a standard .reg but the others use specialized functions.

### **Files included in the Registry Toolkit Merge Distribution:**

**RTMerge.exe:** The program executable. Scroll below for information about the command line syntax. You must pass a .reg to the program on the command. If you run RTMerge.exe by itself it will issue a message ("No data to merge was found!").

**Example\_CreateTest.reg:** When merged into the registry this .reg creates some values & data under HKEY\_CURRENT\_USER\Software\Test\command. The keys will be created if they do not already exist. If the values specified in the .reg already exist their data will be replaced.

**Example\_DeleteTest.reg:** This .reg can only be merged with Registry Toolkit Merge or Registry Toolkit. The action will be to delete HKEY\_CURRENT\_USER\Software\Test\command and all subkeys/values/data under that key.

**Example\_CopyKey.reg:** This .reg can only be merged with Registry Toolkit Merge or Registry Toolkit. The action copies HKEY\_CURRENT\_USER\Software\Test\command (and all keys/values/data underneath) to HKEY\_CURRENT\_USER\Software\Test2\command3

**Example\_RenameKey.reg:** This .reg can only be merged with Registry Toolkit Merge or Registry Toolkit. The action renames HKEY\_CURRENT\_USER\Software\Test\command to HKEY\_CURRENT\_USER\Software\Test2\command3

**Example\_CopyValue.reg:** This .reg can only be merged with Registry Toolkit Merge or Registry Toolkit. The action of this example is to copy the value (and data) 'Install Path' that is present under HKEY\_CURRENT\_USER\Software\Test\Command\ to a value named 'InstallPath 2' under HKEY\_CURRENT\_USER\Software\Test2\Command2.

**Example\_Complex.reg:** This .reg can only be merged with Registry Toolkit Merge or Registry Toolkit. This .reg demonstrates how to include a combination of operations in a single .reg. Please examine this with your text editor before you apply it.

**Other Files Include:** Readme.txt, License.txt; Order.txt; RTMerge.hlp. These are documentation and purchase info files.

### **Registry Toolkit Merge Usage**

There are two forms of usage for Registry Toolkit Merge:

1. Apply a .reg file you specify on the command line. For example,

```
RTMerge.exe test.reg
```

The above will merge the contents of 'test.reg' into the registry. No confirmations are provided.

2. The Registry Toolkit Merge.exe executable can be used as a "stub" file that will apply a .reg via a self-contained .exe.

To use the program in this form you must first create a new .exe consisting of the concatenation of RTMerge.exe and the .reg to apply. We suggest you use the 'Concatenate' function of our [Directory Toolkit](#) or [Explorer Extensions](#) programs to create the new .exe.

The steps are similar for both programs. For example purposes we will create an .exe to apply test.reg.

a. Highlight RTMerge.exe and test.reg in the Concatenate dialog.

b. Arrange the file list with the Move/Up or Move/Down buttons so RTMerge.exe is the list. RTMerge.exe MUST BE FIRST.

c. Supply the name of a Target file that has an .exe extension. DO NOT use RTMerge.exe for a target name. The name you use must be unique. Consider a descriptive name, e.g.,

```
MergeTestreg.exe
```

d. Click the OK button.

To use 'MergeTestreg.exe' and apply the contents of test.reg issue one of the following:

```
MergeTestreg.exe
```

The above provides a [confirmation dialog](#). is presented which give the user the opportunity to cancel if they like.

```
MergeTestreg.exe /s
```

or

```
MergeTestreg.exe /S
```

The above runs the program 'sliently'. No confirmation is presented. The program exits automatically.

NOTE: The /s or /S feature is only available in the registered version.

## **SPECIAL .REG SYNTAX AND USAGE**

### **.reg Files To Delete Keys**

These .reg files require a special format that is understood only by RTMerge.exe and our [Registry Toolkit](#) utility. An example is:

```
REGEDIT4

[HKEY_CURRENT_USER\Software\Test\command]
"RT_Rename_Key"=
```

When applied by Registry Toolkit Merge or Registry Toolkit, HKEY\_CURRENT\_USER\Software\Test\command and all keys/values under this key will be deleted.

The 'delete' operation function is a use of the 'rename' operation - see below.

'Delete' operations can be combined with other actions in the same .reg file. See the example .reg files included in this RTMerge distribution zip.

### **.reg Files To Rename Keys**

These .reg files require a special format that is understood only by RTMerge.exe and our [Registry Toolkit](#) utility. An example is:

```
REGEDIT4

[HKEY_CURRENT_USER\Software\Test\command]
"RT_Rename_Key"="HKEY_CURRENT_USER\Testing"
```

When applied by Registry Toolkit Merge or Registry Toolkit, HKEY\_CURRENT\_USER\Software\Test\command is renamed to HKEY\_CURRENT\_USER\Testing

'Delete' operations can be combined with other actions in the same .reg file. See the example .reg files included in this RTMerge distribution zip.

### **.reg Files That Copy Keys**

As with the above 'delete' operation, copy operation .reg files are understood only by RTMerge.exe and Registry Toolkit. An example is:

```
REGEDIT4

[HKEY_CURRENT_USER\Software\Test\command]
"RT_Copy_Key"="HKEY_CURRENT_USER\Software\Command3"
```

When applied, the key, HKEY\_CURRENT\_USER\Software\Test\command, and all keys/values under this key will be copied to HKEY\_CURRENT\_USER\Software\Command3. If HKEY\_CURRENT\_USER\Software\Command3 does not exist it will be created.

'Copy' operations can be combined with other actions in the same .reg file. See the example .reg files included in this RTMerge distribution zip.

### **.reg Files That Copy Values**

These .reg files are also understood only by RTMerge.exe and Registry Toolkit. An example is:

```
REGEDIT4

[HKEY_CURRENT_USER\Software\Test2\Command2]
"InstallPath 2"=HKEY_CURRENT_USER\Software\Test\Command\Install Path"
```

This operation copies the value Install Path (and its data) in HKEY\_CURRENT\_USER\Software\Test\Command to a value named InstallPath 2 in HKEY\_CURRENT\_USER\Software\Test2\Command2. The syntax for this kind of operation is:

```
REGEDIT4
[Key to copy the value to]
"Target value name"=Key to copy value from\Value name to copy"
```

The \ character and " characters must be present as modeled above.

'Copy Value' operations can be combined with other actions in the same .reg file. See the example .reg files included in this RTMerge distribution zip.

**Note:** Registry Toolkit can be used to simplify creating some of these .reg files. Registry Toolkit can be obtained from our web site - <http://www.funduc.com>

Thank you,

Mike Funduc, President Funduc Software Inc.

<http://www.funduc.com>      <http://www.searchandreplace.com>  
[support@funduc.com](mailto:support@funduc.com)      [support@searchandreplace.com](mailto:support@searchandreplace.com)

## **Operating System Compatibility**

Registry Toolkit Merge runs on Windows 95, 98, 98SE, ME, Windows NT, Windows 2000 (Workstation and Server), XP (Pro and Home), Windows 2003 Server.

### **Notes:**

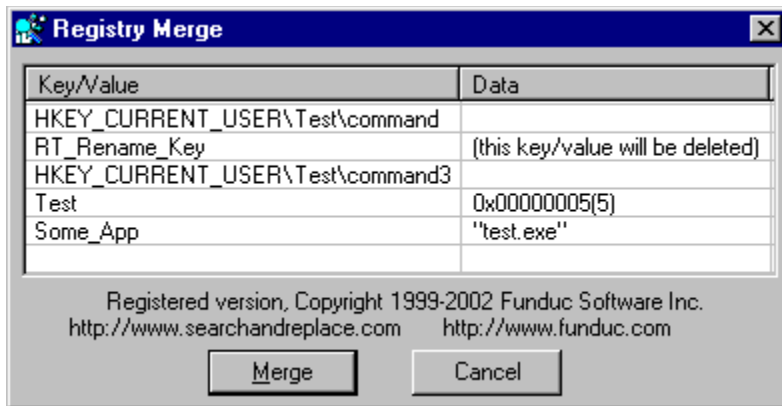
- Windows 95 and 98 users: If you have a brand new install off the original Microsoft CD's you should also apply latest available updates from Microsoft. Directory Toolkit relies on versions of several system dlls that were updated by Microsoft since the initial release of these operating systems.
- Windows NT users: We recommend you install Service Pac 6.

## Confirmation Dialog

A sample of the Registry Toolkit Merge confirmation dialog is shown below.

Please note that the confirmation appears only when the Registry Toolkit Merge.exe is used as a 'stub file' for self-contained, self-applying import (see [Usage](#)). Confirmations are not provided when the program is used in the command line form of 'RTMerge.exe reg\_file\_to\_import.reg'.

Alternatively, the registered version can be run as an exe without the confirmation by adding /s or /S to the command line. This feature is not available in the shareware version.



## License Agreement

### Registry Toolkit Merge

Copyright (c) 1998-2005 by Funduc Software Inc.

<http://www.funduc.com>

All rights reserved.

### License Agreement and Warranty Disclaimer

You should carefully read the following terms and conditions before using this software. Use of this software indicates your acceptance of these terms and conditions. If you do not agree with them, do not use the software.

### Copyright and Other Restrictions

You are prohibited by law from selling, renting, leasing, loaning, or donating the program or documentation in whole or in part without specific advance agreement between yourself and Funduc Software, Inc. You are prohibited from decompiling, reverse engineering, disassembling, or otherwise reducing either shareware or licenses versions of the program to human readable form for any purposes whatsoever. You may not modify the program or documentation in any manner. You are prohibited from permitting anyone else from undertaking any of the above actions.

### Shareware Version License

By using this software you accept full responsibility for usage and results.

The Shareware Version is not free software. If you are using the Shareware Version you are hereby licensed to use this software for evaluation purposes without charge for a period of 30 days. If you use this software after the 30 day evaluation period a registration fee is due (see [Ordering Information](#)).

If you are using the Shareware Version of the software you are also hereby licensed to: Make as many copies of the Shareware version of this software and documentation as you wish; Give exact copies of the original Shareware version to anyone; Distribute the Shareware version of the software and documentation in its unmodified form via electronic means. There is no charge for any of the above.

You may not decompile, disassemble, or reverse engineer Registry Toolkit Merge (shareware) in any manner.

### Registered Version License

One registered copy of Registry Toolkit Merge may be dedicated to a single person who uses the software on one or more computers.

If you make the registered version of Registry Toolkit Merge available through a network and accessible by multiple people you are required to purchase individual licenses for the software covering all workstations that will access the software through the network. Discount pricing is available for multiple licenses. See [Ordering Information](#) for information on how to purchase (register).

You are free to distribute self-merging .exe's using the registered version. However, you may not distribute, share, or give away the RTMerge.exe 'stub file' alone. You are licensed to distribute only an .exe that is a concatenation of the RTMerge.exe and your .reg file. Please see [Usage](#) for more information on creating self-merging .exe's.

Customer support can be obtained by visiting our homepage at <http://www.funduc.com> or by E-MAIL ([support@funduc.com](mailto:support@funduc.com)).

You may not decompile, disassemble, or reverse engineer Registry Toolkit Merge (registered) in any manner.

### Ownership Rights

Funduc Software, Inc. owns and retains all copyrights, patents, trade secret rights, trademarks and intellectual property rights to this software. Registration &/or use of the software does not grant you any right to the intellectual property in the product.

### Governing Law

This agreement shall be governed by the laws of the State of Michigan, United States.

**Disclaimer of Warranty**

This software and the accompanying files are distributed "as is" and without warranties as to performance of merchantability or any other warranties whether expressed or implied.

Good data processing procedure dictates that any program be thoroughly tested with non-critical data before relying on it. The user must assume the entire risk of using the program. Any liability of the seller will be limited exclusively to product replacement or refund of purchase price.

## **Support Information**

We will do our best to provide you with e-mail support and will respond to all inquiries we receive at [support@funduc.com](mailto:support@funduc.com). Ongoing detailed support is not possible if you are not a user of Registry Toolkit or have not purchased Registry Toolkit Merge.

We are interested in bug reports. To report a bug, e-mail [support@funduc.com](mailto:support@funduc.com).

Also, check our web site periodically for program updates - [www.funduc.com](http://www.funduc.com)

Thank you for using Funduc Software products!





## **Registry Toolkit Merge**

Copyright © 1998-2005 Funduc Software, Inc.

All Rights Reserved

<http://www.funduc.com>

For customer support, contact [support@funduc.com](mailto:support@funduc.com) or visit our web site at [www.funduc.com](http://www.funduc.com) for program updates. Also check our web site for [product information](#), trialware & freeware downloads of our other award winning software products.

## Funduc Copyright



### **Registry Toolkit Merge**

Copyright © 1998-2005 Funduc Software, Inc.

All Rights Reserved

[www.searchandreplace.com](http://www.searchandreplace.com)    [www.funduc.com](http://www.funduc.com)

See [Ordering Information](#) for details on how to purchase Registry Toolkit Merge or write us at [info@funduc.com](mailto:info@funduc.com).  
See [License Information](#) for details about licensing. For customer support, contact [support@funduc.com](mailto:support@funduc.com) or  
[support@searchandreplace.com](mailto:support@searchandreplace.com). Also check our web site for [product information](#), trialware & freeware downloads  
of our other award winning software products.

## Funduc Software - Purchasing & Ordering Registry Toolkit Merge

The base price of Registry Toolkit Merge \$10/single user, plus \$5 to \$8 S&H if you want a diskette sent by US or International mail. Email delivery is free. Quantity discounts are listed in the [fax/mail order form](#) and on our WWW site at <http://www.funduc.com>.

Registration includes free program updates and customer support (by Email) for one year. Updates are sent to registered customers as they become available. They incorporate your suggestions, so please send them! If you have problems receiving the program or need customer support, contact us by Email at [support@funduc.com](mailto:support@funduc.com).

### Credit Card Registration:

- **Secure Internet Transaction:** If you have a secure Web browser such as Netscape or Internet Explorer, you may register by credit card via a secure Web transaction from our web site at: <http://www.funduc.com>.
- **Fax Registration:** To register using a credit card via fax, open and print the [fax/mail order form](#). You may also edit and print the file, 'Order.txt', in the program subdirectory. Please write clearly or type when you complete the form. Please check our web site - [www.funduc.com/contact.htm](http://www.funduc.com/contact.htm) - for the fax number to use. Fax orders are processed within a few hours during the USA business day. Allow 7-10 days for postal deliveries. Write [support@funduc.com](mailto:support@funduc.com) if you have a question about your order.
- **Phone Registration:** Call the number indicated on the page at [www.funduc.com/contact.htm](http://www.funduc.com/contact.htm) to order using a credit card. Please remember to specify which program you are ordering. Phone orders with email delivery are typically processed within one business day. Allow 7-10 days for postal deliveries. Write [support@funduc.com](mailto:support@funduc.com) if you have a question about your order.

**Ordering by check:** To register by check, open and print the fax/mail order [fax/mail order form](#). You may also edit and print the file, 'Order.txt', in the program subdirectory. Please write clearly or type when you complete the form. Mail the form and a check to the address indicated on the form. Please allow 7-10 days for check order processing and then contact [support@funduc.com](mailto:support@funduc.com) if you did not receive the program. Payments must be in US dollars drawn on a US bank or international postal money order in US dollars. If you send a postal money order, do so only by some form of registered mail that can be traced!

**Registry Toolkit Merge Mail Order Form**

**Funduc Software, Inc. - Fax and Mail Order Form  
Registry Toolkit Merge**

**Funduc Part Number: 438-RTM-2726**

Fax Orders: Fax to the number indicated on the page at [www.funduc.com/contact.htm](http://www.funduc.com/contact.htm)

Check Orders: Funduc Software, Inc.  
P.O. Box 530904  
Livonia, MI 48153-0904  
USA

----- PRINT NEATLY OR TYPE! -----

<u>Price Schedule</u>	<u>Price (\$US) Per User</u>	<u>Number of Users</u>	<u>Price</u>
Single user	\$ 10.00	_____	\$ _____
2 to 9 users	\$ 9.00	_____	\$ _____
10 to 24 users	\$ 8.00	_____	\$ _____
25 to 49 users	\$ 7.00	_____	\$ _____
50+ users	\$ 5.00	_____	\$ _____
Residents of Michigan, United States - add 6% sales tax			\$ _____
<b>Preferred Shipping Method</b>	Mail 3.5 disk (US) \$5 S&H		\$ _____
	Mail 3.5 disk (overseas) \$8 S&H		\$ _____
	Email (Free)		\$ <u>  </u> 0 <u>  </u>
	<b>TOTAL PAYMENT</b>		\$ _____

**Credit Card Information**

Card Type (Check One): Visa[  ] American Express[  ] MasterCard[  ] Discover[  ]

Name as it appears on card: \_\_\_\_\_

Credit Card Number: \_\_\_\_\_

Expiration Date: \_\_\_\_\_

Street Address: \_\_\_\_\_

Street Address: \_\_\_\_\_

City, State Zip: \_\_\_\_\_

Country: \_\_\_\_\_

**Your Information** (Write 'Same' if not different from above)

Your Name: \_\_\_\_\_

Company: \_\_\_\_\_

Street Address: \_\_\_\_\_

Street Address: \_\_\_\_\_

City, State, Zip: \_\_\_\_\_

Country: \_\_\_\_\_

Day Phone Number: \_\_\_\_\_

Fax Number: \_\_\_\_\_

Alt Phone Number: \_\_\_\_\_

\* EMail Address: \_\_\_\_\_

Signature: \_\_\_\_\_

Date: \_\_\_\_\_

\* Include E-Mail address if you want email delivery.

**Comments:**

## Funduc Software Products

Please visit our Web site at <http://www.funduc.com> for more information, freeware, shareware, and purchases of these and other products.



### Search & Replace

**Search and Replace** is our award winning utility loved by programmers, webmasters, and novice computer users alike. If you need to find and replace text, or just find text, this utility is a must have. Search and Replace looks through multiple files for a string and can also replace it with another string. It can search subdirectories and ZIP files and do case sensitive or insensitive searches. Extensive support for regular expression (egrep) search & replacement includes operations that span more than one line, insertion of the path & filename during replacements, and incrementing number replacements. Binary search & replace mode can be combined with regular expressions. Precise control over replacements is available through multiple confirmation options and a built-in context viewer that allows you to view replacements in- context, before they are made. An HTML Mode can be used to make html special character code substitutions during search/replace. Ignore Whitespace mode makes it convenient to handle spaces & cr-lf during non-regular expression operations. A built-in script editor makes frequent &/or complex multi-step search/replace operations easy to prepare. Advanced script operations include a boolean expression evaluator that provides additional control over which files are processed by the script. Advanced scripts also allow you to specify the program options in effect, insert comments in scripts, and perform iterative script operations. Multiple file masks and file date & size filters can be used to include &/or exclude files during regular and scripted operations. The internal context viewer includes a built-in editor for editing text files. The full complement of command line switches (including script launching) is ideal for network managers & advanced users. Other functions include: "Touch" files (change time/date stamp & file attributes); Preservation of original file date during replacements; Replacements on backup path files instead of the originals; Output reports to monitor operations; Shell extensions to launch Search & Replace from Explorer and the Find Menu; and more. A detailed help file with examples are included. Several foreign language interface are available from <http://www.funduc.com>.

Search and Replace has received several awards from WUGNET® (Windows User Group Net) Windows NT Shareware Pick of the Week ([www.wugnet.com/shareware](http://www.wugnet.com/shareware)), Windows Magazine ([www.winmag.com](http://www.winmag.com)) Superior Shareware, and has been featured several times in Lockergnome's Free Windows 95/NT E-zine ([www.lockergnome.com](http://www.lockergnome.com)). It has a ZDNet Hotfiles ([www.hotfiles.com](http://www.hotfiles.com)) of 5 stars, & a TUCOWS ([www.tucows.com](http://www.tucows.com)) 5 Cow rating.



### Search and Replace Regular Expression Wizard

**Search and Replace Regular Expression Wizard** is a step-by-step wizard to help you build regular expressions for use in Search and Replace. The expressions can be constructed from a menu of operators having English language counterparts. The impact of the operators is displayed in color coded form on a sample text you provide. You can move back & forth between search operators - replace operators - final results to adjust your expressions as necessary. When finished, the final expressions are inserted into the corresponding Search and Replace fields if Search and Replace is running. The Wizard itself is freeware. Documentation requires a one time purchase.



### Directory Toolkit

**Directory Toolkit** is a multipurpose directory comparison and file manager that provides features missing from Windows. It displays single directory lists or side- by-side directory comparisons using color coding for alike, different, or missing files. Comparisons can be based on dates or a binary file analysis of file content. You can copy, move, & rename files while retaining long filenames and six built-in synchronize functions simplify updating directories. Built-in archive functions, with Explorer shell extensions, let you create & manage archives from Explorer and use Directory Toolkit as your primary archive manager for supported archives (zip, tar, gz, lz (read only), & cab). File operations and directory comparison functions work seamlessly on files in archives, e.g., no need to manually extract files first. Other features include statistics for file counts and path sizes; Ignoring filename case during comparisons; Explorer compatible OLE drag n Drop; Split/Concatenate files to/from diskettes; Encode/Decode UENCOD, Base64(Mime), BinHex(Mac), XXENCOD and yEnc formats, (Decode also includes quoted-printable, 7 bit unencoded, & plain text); An integrated comparison viewer for a color coded display of the actual differences in files; Safe physical sort of directories; Touch files (change time/date & attributes stamps); Find duplicate files on a drive; Open files and launch applications; Multiple include/exclude file masks and the ability to include/exclude files based on size and date; Command line switches & script functions to automate comparisons & synchronize operations & control program options in effect via batch files; Configurable output file and print functions to create reports of single

and comparison directory lists; Detects & runs (optionally) setup programs in archives; Display file version information including 8.3 file name equivalents; File numbering to number files sequentially based on adjustable sort order and a user defined starting value. Help file with examples included. International versions are available from <http://www.funduc.com>.

Directory Toolkit has been a winner of the WUGNET® Windows NT Shareware Pick of the Week for ([www.wugnet.com/shareware](http://www.wugnet.com/shareware)), WUGNET® Windows95 Best Choice Shareware for the week, and featured Lockergnome's Free Windows 95/NT E-zine ([www.lockergnome.com](http://www.lockergnome.com)). It has a ZDNet Hotfiles ([www.hotfiles.com](http://www.hotfiles.com)) of 5 stars.



### Funduc Software ZIP Extractor

**Funduc Software ZIP Extractor** is ZIP "self-extractor stub" that lets you turn your ZIP files into a self-extracting executable that will automatically unzip the archive when launched. This allows you to share your zip files with another person who might not have an unzip software on their computer &/or who might have only occasional use for an unzip tool. The self-extractor allows some or all files to be extracted and can create the paths in the zip file (default) or "flatten" the directory structure (unzip into a single path).



### Registry Toolkit

**Registry Toolkit** lets you search &/or replace and edit the Windows registry. You can specify the data types to process, start key, case sensitive, whole word. Regular expression operations using an egrep-type syntax are also available. You can create/edit keys, values, &/or data manually if you wish. A unique 'operations' function lets you move/copy/delete/export values you select. For example, you can copy/move keys from one location in the registry to another. The program now maintains multiple 'undo' files that can be used to reverse previous changes (10 is the default). An automatic 'last change' undo is available from the program GUI. Replaces can be previewed in advance, in-context. Replaces can also be previewed in the context of an overall search - a comparison dialog then lets you select/deselect specific operations to perform before making the overall replace. The program can print search & registry browse results. The .reg import function allows you to compare existing data vs. data to be imported - specific items can then be selected/deselected. The .reg export function can be used to make special .reg files that delete keys when merged via Registry Toolkit or our new Registry Toolkit Merge program (see our web site). The various program comparison dialogs are configurable and their contents can be copied to the windows clipboard. The program can read DOS environment variables and use them in a search/replace. Script file & command line functions are available for automated &/or complex operations. Registry Toolkit will operate on a remote registry (if you have permission to do so). A German interface is available.



### Registry Toolkit Merge

**Registry Toolkit Merge** is a companion program for Registry Toolkit. Registry Toolkit Merge is a command line that merges .reg files into the Windows registry. Registry Toolkit Merge is unique because it can be used to create self-contained, self-importing .exe's. When clicked on, the .reg information is imported into the registry (after confirmation). This is be useful, for example, if you need to distribute a .reg file to others but are worried that they might not know how to import a .reg file manually. Alternatively, a .reg file can be passed to the program from the command line. Like Registry Toolkit, the program can be used to apply .reg files that will delete keys from the registry or copy/move them to another location -- tasks that cannot be accomplished easily by the regedit.exe .reg merge function that comes with Windows.



### Folder Synchronize

Folder Synchronize is a command-line utility useful to network administrators and other power users. It provides a subset of the functions in our Directory Toolkit utility, namely, the comparison & synchronize functions. We created Folder Synchronize for those who needed those functions but not the GUI interface & other functions of Directory Toolkit such as archive management, file operations, etc. Folder Synchronize is a native 32-bit executable for use with all 32 bit Windows platforms.

Folder Synchronize can synchronize two paths using one of 6 synch methods. The program can also do a comparison-only. This is useful with the output report function. When the output report is enabled it will contain a summary of the path comparison &/or a summary of the file operations carried out by the synchronize. Other features include: Switchable display (or not) of a progress meter; A custom bitmap & message of your choice can be displayed on the screen while an operation progresses; A 'No Cancel' switch can be used to make it less easy for a procedure to be interrupted; Require (or not) confirmation of file operations; Complex include/exclude file

masks that let you include/exclude some file or subdirectories while including others; Multiple operations can be submitted to the program via multiple 'configuration files'.



### Folder Synchronize Script Editor

The 'Script Editor' is used to generate (or edit) script files that can then be used with Folder Synchronize or our Directory Toolkit utility. The script switches are presented in an organized arrangement. The display of related switches can be collapsed/expanded for readability.



### Application Mover

**Application Mover** is a tool that relocates installed programs from one path to another on your hard disk. Application Mover takes files found one path and moves them to another that you specify. Application Mover scans the windows registry for references to old file location and adjust the registry to the new location. Application Mover also scans all windows shortcuts in the Start Menu and adjusts those as well. \*.ini and \*.log files present in the program's path are updated to reflect the new location of your program.



### Application Inventory

**Application Inventory** is a utility that scans your system for program .exe files and generates a configurable report about the files that were located. Optional follow-up scans are then initiated to cross-reference the initial scan results with windows .lnk shortcuts and/or references in the windows registry. Further details on files are available from Properties and References dialogs. Include and exclude filters are available to define the initial search by path &/or string(s) found in file version information. The fields included in the initial file scan are configurable. Results be sorted, copied to the clipboard, printed, or saved in a delimited file you specify. Application Inventory can also launch windows explorer on the path containing a file in the results list. Although Application Inventory is intended as a reporting tool, various windows properties sheets can be launched that allow you to make edits to file or shortcut properties. The program defaults to scanning for .exe files but a special switch is available to scan for another file type that you specify.



### Duplicate File Finder

**Duplicate File Finder** is utility for 32 bit windows that locates duplicate files on in one or more paths. Unlike other utilities that only check file names, Duplicate File Finder performs a binary comparison of file contents and can locate files that are alike regardless of names. The path(s) to scan is configurable by file path and file mask(s) and filter settings can be used to include/exclude files by date, size, attribute. Results can be saved to a tab delimited file. Supplementary functions include launching files, deleting files to the recycle bin, opening Explorer on a path, and examining file properties.



### File Merge Express

**File Merge Express** is a file comparison and merge utility for 32 bit Windows. The program displays a contents comparison of two files and can (optionally) create a third file, 'Merge File' that consists of the merge of the two files being compared. The Merge File can (optionally) be opened in the built-in text (or binary) editor. The program has options for file naming of the Merge File, including automatic naming when the two source files for the comparison have the same name. The Compare Files dialog is also used to establish parameters such line prefixes, colors, orientation of the preview, etc. Command line parameters are available to specify files to compare or a script file to use. The program can also be launched from the Windows Explorer right click menu. File Merge Express will also supplement our Directory Toolkit utility. If both programs are installed, Directory Toolkit's file contents comparison will automatically employ File Merge Express, which has more features than Directory Toolkit's internal routine.



### Delivery Agent

**Delivery Agent** is a send-only e-mail program, with mail merge functions, for use by web site managers, network administrators, customer relations and support personnel, etc. The program is used to deliver frequently used, customer-requested e-mail messages (& MIME attachments) such as newsletters, product delivery & announcements, support notes, etc. Messages can be sent to one or more users by selecting a message from a list and entering the users' address. The program can read a text file containing a list of addresses for bulk delivery. Recipients of bulk deliveries are shielded from seeing the other recipients in the list. The program checks a POP e-



mail account prior to sending message via SMTP - useful for servers that 'validate' the users current IP address prior to mail relays. Version 3.0 adds MAPI support. When activated, the program will route outgoing messages to your primary MAPI-aware e-mail program. Mail merge field name definitions, variable names, and data are stored in a single file containing the data and e-mail addresses. Variable names can be anything you like (except for the name of the e-mail address field). Mail Merge 'Constants' can also be defined. The program has a customizable header function that can be used to send web mail' or 'HTML mail'. The "To: " field can also be customized for bulk, non- mail merge deliveries. Port settings to use and maximum number of recipients per block can be configured manually. Settings and messages can be created via the program GUI or, once you are familiar with the program, via an external text editor. A full complement of command line switches allows the program to be incorporated into your .bat routines. A log file of deliveries can be enabled (or not).



### Shortcut Doctor

**Shortcut Doctor** allows you to check your Windows links/shortcuts and see which contain targets which can no longer be found. The program can then delete the shortcuts, resolve them, or carry out search/replace operations to modify shortcut fields with or without validation of new paths. Network Drive mappings can be inserted in the Replace dialog automatically. Individual shortcuts can be edited and all shortcuts on a drive can be displayed, regardless of whether they are valid or not. Explorer Internet URLs can also be checked for problems. CD-ROM drives, network drives, and specific paths can be ignored during processing. Includes an Empty Recent Documents button. Script files, run from the command line, allow you to do multiple operations, control program options, and easily specify complex paths. A German interface is available.



### Funduc Explorer Extensions

**Explorer Extensions** is a collection of enhancements for the Windows Explorer right-click context menu: a) Encode and Decode Email attachments - support for UUENCODE, Base64(Mime), BinHex(Mac), XXENCODE, quoted-printable, 7 bit unencoded, & plain text, b) Split and Concatenate large files into smaller ones for storage on floppies & visa versa. Split can be based on file size or a string found in a file, c) Touch files - change the time, date, & attributes of files. Touch can add (or subtract) a user specified time value from the current file time. d) File Operations - copy/move/rename/delete files using complex file masks. The program can also change the case of file names & number files. A German version is available.



### Drive Bar

**Drive Bar** allows you to conveniently open views of your drives in the Windows Explorer. Drive Bar's Auto Hide function allows it to disappear from view when not in use so that it does not take up screen space. Drive Bar is resizable and can be set to remain visible at all times. It can also be set to launch alternative file manager programs in lieu of Windows Explorer, launch views as "Tiled" or not, ignore specified drives in the list of drive icons, and run automatically at Windows startup.



### Update Toolkit

**Update Toolkit** is a multi-purpose application intended for administrators network managers. This program was created for those who need some or all of the separate functions of our Folder Synchronize, Shortcut Doctor, Registry Toolkit, and Search and Replace utilities under one command line application. Operations are controlled by scripts and are highly configurable. While Update Toolkit can be used on individual machines, it is oriented toward 'logon-script' operations for workstations. The program has no user interface and therefore is well suited for automated operations.



### Count Characters (freeware)

**Count Characters** copies most Windows controls' data to the clipboard! That's just one of the features of this freeware program from Funduc Software. The program can report the type and content of some of the windows currently displayed on your desktop and for the most popular types of controls (including lists and trees) it can copy their contents to the clipboard. You can also copy the contents of password fields and regular text boxes. Cost: Free.



### Decode Shell Extension (freeware)

**Decode Shell Extension** is very popular freeware app is an extension for the Windows Explorer. The program allows you to decode Internet email attachments by right-clicking on a saved message file from Explorer and selecting Decode from the menu. The program supports multiple attachments, multi-part files (already concatenated), UUENCODED, Base64(MIME), BinHex (Mac format), quoted-printable, XXENCODED, plain text files, and User (table) encoded files. If the attachment contains only one file, Decode Shell Extension will offer to open it using either the associated program or Notepad. For virus safety reasons, it will not offer to launch .exe., .com, .bat, & .cmd files. You should scan decoded Word and Excel files with your anti-virus checker before loading them.



#### **DBComp Ver 1.0 (freeware)**

**DBComp** is a database comparison and merge application that compare two ODBC data sources for alike vs. different records and generate a "Difference File" that lists the records that either do not match or have been added/deleted from one data source compared to the other. DBComp can also perform a "Merge" operation that uses Difference File generated by DBComp and updates an ODBC data source via SQL statements. You can view the SQL statements in advance and remove one (or more) in advance if you wish. DBComp version 1.0 is freeware.



#### **Word Search and Replace**

**Word Search and Replace** is a freeware macro for Microsoft Word. It uses the 'find and replace' functions of MS Word to perform a search/replace in one or more files selected by a file mask supplied by the user. We created 'WordSR' for those who need to search/replace in Word documents only. The macro can use the Word 'Pattern Matching' regular expression switch. Case Sensitive and Whole Word search/replace is also possible



#### **Excel Search and Replace**

**Excel Search and Replace** is a counterpart to our Word Search and Replace. This is a freeware macro for Microsoft Excel that searches (and replaces) in multiple .xls files using Excel's built-in find & replace function.



#### **PowerPoint Search and Replace**

**PowerPoint Search and Replace** rounds out our collection of freeware find and replace Office Macros. This macro is a PowerPoint .ppt file that works with MS PowerPoint files using the find and replace functions that are part of PowerPoint. You need to have the full version of PowerPoint installed. The macro can be run as a slide show but it will not work if you only have the PowerPoint Show Viewer from Microsoft.



#### **TZAdjust (freeware)**

**TZAdjust**, which stands for Time Zone Adjust, is a freeware app we created for users who find it necessary to make manual changes to the Windows time zone and 'day light savings' offset parameters. TZAdjust is probably of greatest interest to Windows NT-class users. NT/2000/XP returns time information as an offset from Greenwich Mean Time (GMT). In addition, the OS automatically makes Daylight Savings compensations when reporting file times. One can disable "Automatically Adjust for Daylight Savings" entirely in the Windows Day/Time Properties dialog but there may be other instances where finer control over time zone and the daylight offset is desired. Do not use TZAdjust casually. Be sure to read the information in the 'readme.txt' before using this program.



#### **FSHED (freeware)**

**FSHED**, which stands for Funduc Software Hex Editor, is a freeware hex editor whose functions include File Insert; File Revert; Bookmarking; Clipboard Paste choices; Block Selection; Search/Replace; Read only switch; Print Preview; Display Choices (Bytes per line, Offset length, ANSI/OEM, Little-Endian/Big-Endian, Font Size, Screen Colors, & more). Search and Replace can be configured to use FSHED instead of HexView.



#### **HexView for Windows (freeware)**

**HexView** is a multiple document Hexadecimal viewer that can display, print, and print preview any file as a hex dump. It is intended as a supplement for Search and Replace for Windows, however, it is a standalone app and does not require Search and Replace. A Japanese version is available.



### Limit Edit (freeware)

**Limit Edit** expands upon the built-in limit feature for edit boxes & rich edit controls by letting you set your own maximum size settings for the amount of text permitted in edit boxes and rich edit controls. For example, Limit Edit can set a limit on the amount of text allowed in an instance of the Notepad text editor. The Limit Edit dialog also displays interesting information about the types of controls in use by a program. Although intended for edit boxes and rich edit controls only, it may also work on some other controls that are subclasses of these. Separate 16 and 32 bit version included.



### INI to Registry (freeware)

**INI to Registry** works well with any program that relies on .ini files. It can read the contents of any INI file and load them into the Windows registry. That way programs which previously used INI files can read the old data from the registry. The program is free. The source code is available for \$25. Please E-MAIL [mime@funduc.com](mailto:mime@funduc.com) for information on purchasing the source code.



### Patch Creator

**Patch Creator**, one our legacy products, is a tool for software authors. It is a two part program used to make patches for updating registered versions software. Both the Patch Creator (used on the developer's end) and the Patch Applicator (applies the patch on the end user's machine) are easy to use GUI programs. Command line switches or complicated run instructions are not necessary on the user's end. The Creator and Applicator are 32 bit GUI Windows utilities. You can require passwords to run the Applicator (or not). Patches can be created to update files on users' machines from a specific version, add files regardless of existing version, remove files, or rename files. Patches that conduct 'updates' are based on binary differences between old vs. new files. Compression can be used to further reduce the size of the patch. Patches for multiple versions can be include in a single patch file. Patches can be configured to use a registry value on the end user's machine for setup path information and the applicator can also write a .reg file to the user's registry upon completion. In addition, patches can be set up to halt operations if specified files(s) are not found on the end user's machine. This can be used, for example, to not patch any files if a critical file you specify is not present. The Patch Creator has a script language for saving complex patch setups and it can be run from the command line for use in automated routines. A German version is also available.

### Decode/Encode DLLs

**Decode/Encode DLL** is another legacy product for software developers. The Decode/Encode DLL can be called from any Windows programming language (such as VB, Visual C, Powerbuilder, etc.). It allows you to automatically detect if a given file is UUENCODED, Base64(MIME), XXENCODED, BinHex, encoded with a user-supplied table, quoted-printable, or plain text. The DLL can then decode the file(s) either in the current directory or in one specified by the user. Binary files can also be encoded for transmission over the Internet. Functions are available for encoding/decoding to/from memory buffers, listing message body text, and message headers. Utility functions for split/concatenate are also available. Example code and a model test program is included. Cost: \$58 (no royalties).

