

12'-0" X 15'-0"
3,600 X 4,150
180^{sq}

3 X 10
30^{sq}

14'-2" X 13'-0"
4,225 X 3,900
184^{sq}

2-0
by pass
doors

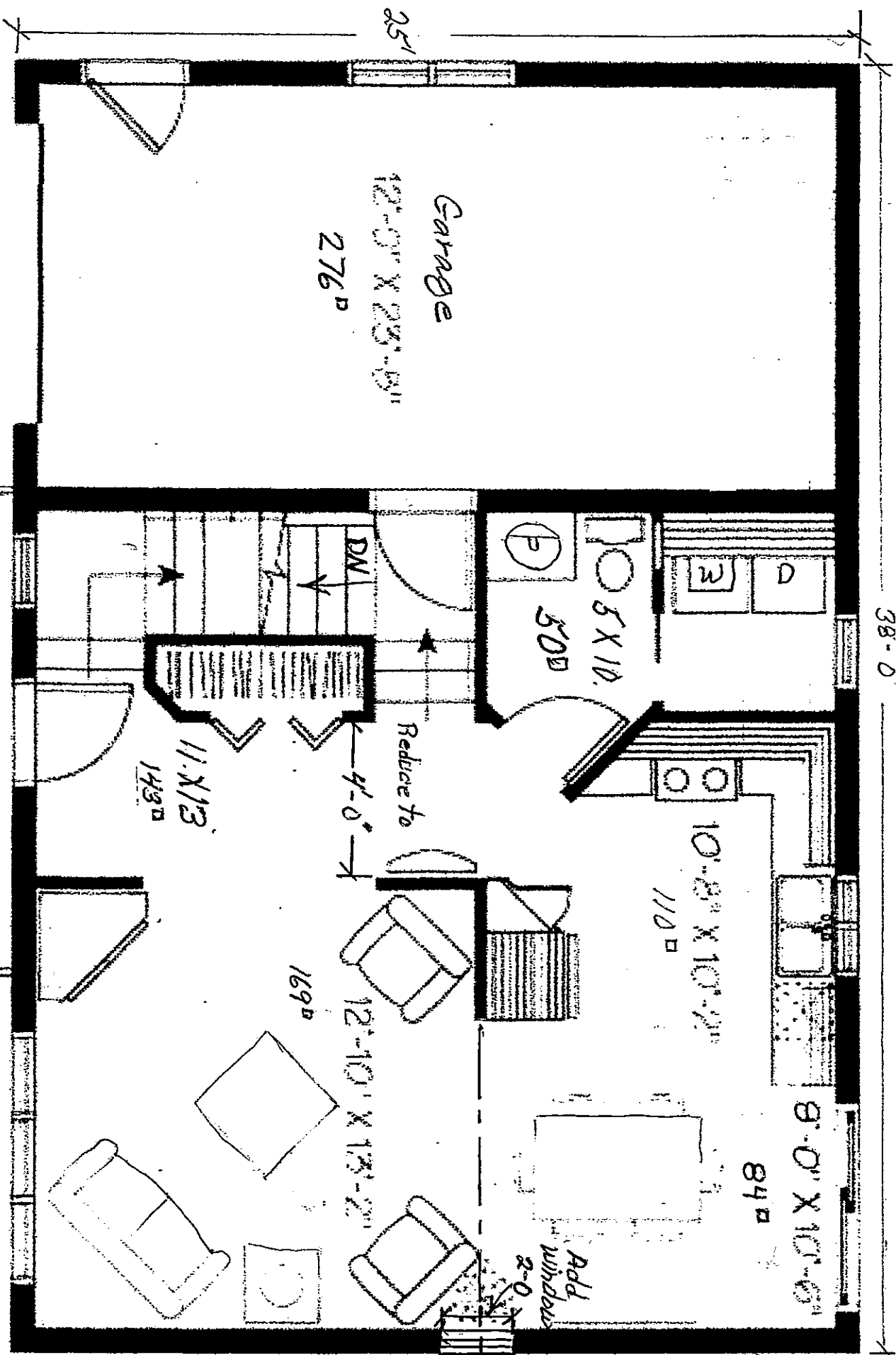
SAME
NO
other
ph's

(a) 2-0
By Pass

1/4" = 1'

9'-0"

18'-0"



38-0

1722

LE
 12/11/15
 P

1/2" = 1'
 2/15/15