

PM2html-PageMaker to HTML Operating Instructions

INTRODUCTION

PM2html-PageMaker to HTML will convert PageMaker documents to hypertext files that can be placed on the Internet. Once converted to HTML (Hypertext Markup Language), the text can be viewed using Lynx or any WWW (World-Wide Web) browser. *PM2html* will create a home page and the necessary links and anchors.

PM2html will convert only text; boxes, rules, graphic objects, etc. will be ignored. *PM2html* operates on a page-at-a-time, although text continued from one page to another will be included in the output file as one continuous story (see Using PM2html).

Multiple text blocks on a page can be selected using the pointer tool. All selected text blocks will be output from left-to-right, top-to-bottom. This method allows multiple stories with heads to be combined into a logical sequence.

PM2html supports PageMaker styles. Heads can be converted to HTML headings based on either the Style Palette or on specific point sizes (if the Style Palette has not been used). Home page entries can be automatically picked up using the Style Palette or the user can enter the information directly. At the completion of the process, all files generated by *PM2html* can be edited by any ASCII editor.

A shareware copy of HTML specification is included with the package. It is in Postscript format and needs only to be downloaded to any Postscript printer.

PM2html LOG FILE

PM2html requires a log file (PM2HTML.LOG). After installation, the file is stored in the Addition directory along with the program file. The log file is an ASCII text file that **MUST** be edited prior to doing the conversion. Use any standard ASCII editor (Windows' Notepad).

The file is split into 4 sections:

#DIRECTORY=This is the complete pathname of the directory or folder you want the output files placed into.

#FILENAME=This is the name of the first file to hold the converted text. All converted files and the Home Page file are placed into the directory specified above. The file name **MUST** follow the following format:

xxxxxxnn.htm

where:

xxxxxx is 6 unique characters used to identify the file. If shorter than 6 characters, it should be padded with underscore (_) characters.

nn must be a number between 10 and 99. *PM2html* will update this field as each new file is created. It is suggested you start with 10.

.htm is the suggested ending to the file name.

#BEGIN HEADER= This command line is followed by the hypertext information to appear at the top of each file created by *PM2html*. In the sample file are the Name of the publication, link to a graphic logo and volumn number as well as appropriate spacing. Enter any information following the **#BEGIN HEADER** command, end with the **#END FILE** command.

#END FILE=Place any hypertext information that is to appear at the end of each created file. In the sample file, it includes a copyright line and hypertext ending commands. Enter all necessary information following the **#END FILE** command and the **#END** command.

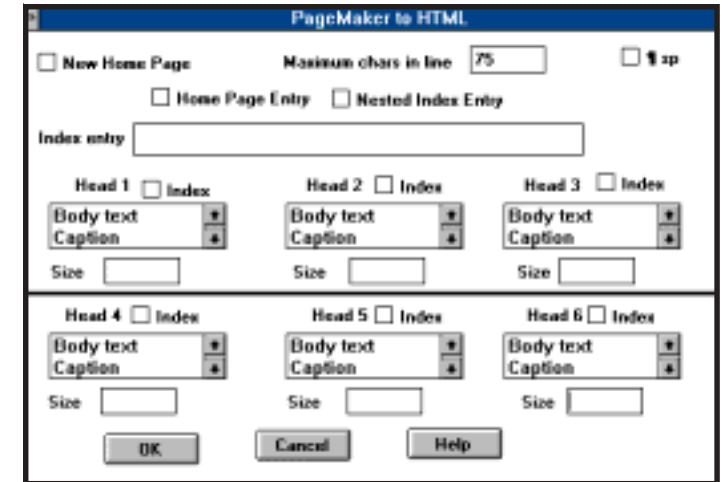
#END=Must be present and must be the last line in the file.

DIALOG WINDOW

After all text blocks have been selected (see Using PM2html below) and *PM2html* activated, the dialog window will then appear. Before continuing, you must configure the program for your requirements.

The following is a description of each in the dialog window:

New Home Page - By selecting this option, the existing home page (HOME.HTM) within the specified directory (see PM2html Log File) will be removed and a new home page file started. When using *PM2html* with a multiple page document, you will need to run *PM2html* for each page requiring conversion. The first time *PM2html* is run, this New Home Page box should be checked, with each additional running of the program,



this box should be *left unchecked*. In this manner, the Home Page will grow as more entries are added to it.

Maximum characters in line - PageMaker saves all paragraphs as one long line of text. When converted, the output file may not work with your editor due to these long lines. By specifying the maximum characters in a line, *PM2html* will break it into shorter lines. Lynx will honor these breaks, most WWW browsers will rejoin text to form its own line endings. Lines are split on space characters.

¶ space - If selected (checked), additional space will be left between paragraphs. Unchecked, no additional space.

Home page entry - If checked, the Home Page will be recreated or updated (depending on the New Home Page checkbox). When selecting this option, it is necessary to either select Index Entry (see below) or check one or more Heading options (see below).

Nested index entry - Check this box if text on this page is to form a *hypertext link* to another file or text block. *The hypertext link is NOT put into the Home Page*. If selected, the *hypertext anchor* (data linked too) must be manually entered after conversion is finished using a ASCII editor.

Index entry - Enter text that will appear on the Home

Page. Use this option *ONLY* if you do not select any of the Heading options. By entering text, you automatically select this option. After completing the conversion, it is necessary to insert both the *hypertext link* and the *hypertext anchor* into both the Home Page and the text file. A simpler solution would be to use the Heading option and then edit the Home Page. The advantage is that both the *hypertext link* and *hypertext anchor* are in place.

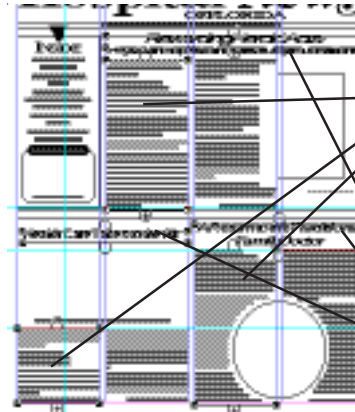
Heading option (Head 1-6, Index, Size) - Hypertext support 6 different head styles (see hypertext reference manual). *PM2html* will convert PageMaker heads to hypertext heads based on either PageMaker Styles or on a specific Point Size. Additionally, *PM2html* will automatically create entries and links from the Home Page if the Index box is checked. When using the Size option, you must enter the exact size of the head appearing in the PageMaker document. All text having a point size that matches will be used as a hypertext head. If the Index box is also checked, the heading text will also be used as an entry on the Home Page. *Be careful when using the Size option, since all matches will become heads.*

The preferred method is to create PageMaker documents using the style palette. To convert PageMaker styles to hypertext heads: scroll through the list of styles and select the appropriate style by clicking on it. Once the style has been selected, you can decide if this head is to be an Index entry by checking in the Index box. *You can select head conversion without selecting the index option.* Repeat this process for as many of the 6 heads as required.

USING PM2html - HOW IT WORKS

After completing the installation and editing the Log File you are ready to begin. The process consist of: selecting text for conversion; select the *PM2html* addition; fill in the dialog box; and do the conversion. You can then turn the page and repeat the steps.

Selecting text for conversion-Using the pointer tool, select the stories you want to convert. If multiple text blocks are required, hold down the shift key as you select with the pointer tool. In the above example, all heads, text stories, captions, and jump lines are in sepa-



Selected 3 stories. Since each story is linked, only the first text block of each needs to be selected

Select the heads to go with each story

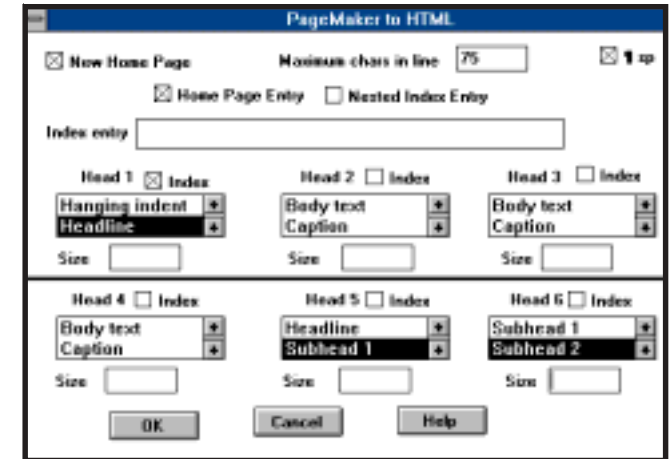
rate text blocks. It was necessary to select 6 elements to get the 3 stories and their heads. The output sequence will be the lowerleft head and story, followed by the upperright head and story, and finally the lowerright head and story.

Select the PM2html addition-Using the mouse select *PM2html-PageMaker to HTML* addition under the Aldus Additions with the Utilities pull-down menu.

Fill in the dialog box-Select options as appropriate for your conversion. Remember to select New Home Page if this is the first file and you want to start a new home page.

In the example below:

1. This is the first time through the conversion. We have requested a new Home Page be created.
2. *PM2html* will add an entry to the Home Page and generate the links since we selected *Home Page Index*.
3. Additional space will be added between paragraphs since we selected ¶¶ space.
4. Any text marked with PageMaker style *Headline* will be converted to hypertext head 1 and an entry in the Home Page file will be made with the appropriate link.
5. Any text marked with PageMaker style *Subhead 1* and *Subhead 2* will be converted to hypertext head



5 and 6. *No entry will be made in the Home Page file.*

INSTALLATION

Macintosh:

Exit PageMaker and return to the desktop. Copy *PM2html.add* into the Additions folder within the Aldus folder in the System folder (hard disk>systems>Aldus>Additions). To accomplish this:

1. Place the floppy disk into the floppy drive
2. Click on the floppy icon and bring up the *PM2html* icon.
3. Open the Additions folder
4. Drag *PM2html.add*, *PM2html.log*, *HTMLPrimer.ps* into the Additions folder

PC Windows:

Exit PageMaker and start Windows. Copy *PM2html.add* into \Aldus\USEngsh\Addition directory. To accomplish this:

1. Place the floppy disk into the floppy drive.
2. Select **Run** from Windows **File** menu bar.
3. Type A:INSTALL or B:INSTALL followed by return
4. Follow the directions from the dialog box...see README file for any additional information



Software Services for the Professional
4107 Gunn Highway • Tampa, Florida 33624
(813) 962-7800 • fax (813) 960-2356
email edco@gate.net