



Exchange's Help File [shareware version]

This Help File and Exchange are Copyright Shawn Kresal © 1994-1995 All Rights Reserved.

[Contacting the Author](#)

[Warranty Information](#)

[Distribution Policy](#)

Installing and Running Exchange

[Which files do I need to run Exchange?](#)

[How do I install Exchange on my computer?](#)

[Common questions/problems and their answers](#)

More on Exchange

[All about registering](#)

[Accuracy of Exchange](#)

[Where can I get current exchange rates?](#)

[Where can I get the latest version of Exchange?](#)



Which files do I need to run Exchange?

Exchange will usually come to you in the form of a compressed ZIP file. It must contain ALL of the files listed below in order to be installed properly. If it does NOT contain one or more of these files then you have an incomplete copy. Click [here](#) for information on how and where to get a complete, up-to-date copy.

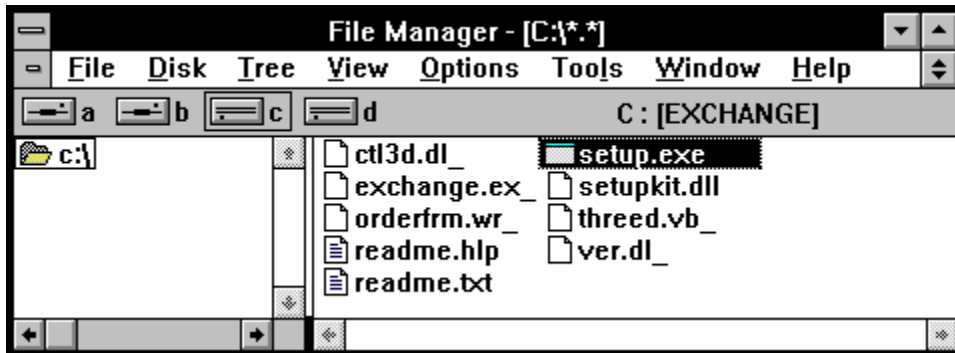
- **CMDIALOG.VB_** Provides standard dialog boxes/Help file integrater
- **COMMDLG.DL_** Library for standard dialog boxes
- **CTL3D .DL_** 3D message box library
- **EXCHANGE .EX_** The program itself
- **ORDERFRM.WR_** Order form
- **README .HLP_** The file you're currently using
- **README .TXT** ASCII text version of this file
- **SETUP .EXE** Installation program
- **SPIN .VB_** 3D control library file
- **THREED .VB_** Beveled 3D effects library file
- **VER .DL_** Necessary windows system file

NOTE: You must have VBRUN300.DLL to install and run Exchange.

How do I install Exchange?

- 1) Run Windows
- 2) Start File Manager
- 3) While running File Manager, double click on the file **SETUP.EXE** that came with this set of files. The other files that came bundled with this file must be found in the same directory as SETUP.EXE for the installation to succeed.

That's all there is to it! The rest is done for you automatically.



NOTE: You must have VBRUN300.DLL to install and run Exchange.



What do I get for registering?

[Registering through CompuServe](#)

[Print Out Order Form](#)

If you find this program to be worthwhile or beneficial, please support the author's efforts by registering. Your support is the only means that the shareware author has for continuing to bring you quality software.

By registering Exchange you will receive:

- Complete custom currency options
- Ability to print out a hard copy report of exchange rates
- Full 60 day upgrade protection
- Removal of the opening "About" screen
- All up-to-date exchange rates pre-loaded
- The latest version of Exchange

Please send your check or money order to: Shawn Kresal

P.O.

Box 25834

Fresno, CA 93729

The registration fee is \$15.00 plus \$1.50 for shipping and handling. Orders outside the continental US please add an additional \$3.00. Payments must be made in US Dollars. Allow 3-4 weeks for delivery; slightly longer if paying by personal check.



No Warranty

BY USING, OR ATTEMPTING TO USE THE PROGRAM EXCHANGE, YOU AGREE TO THE FOLLOWING CONDITIONS:

THE USE OF THE PROGRAM IS AT YOUR OWN RISK. EXCHANGE IS PROVIDED "AS IS" WITHOUT ANY WARRANTY OF ANY KIND, EITHER EXPRESS OR IMPLIED, INCLUDING, BUT NOT LIMITED TO, THE IMPLIED WARRANTIES OF MERCHANTABILITY AND FITNESS FOR A PARTICULAR PURPOSE. SHOULD EXCHANGE PROVE DEFECTIVE, YOU ASSUME THE COST OF ALL NECESSARY REPAIR OR CORRECTION.

IN NO EVENT WILL THE AUTHOR BE LIABLE TO YOU FOR DAMAGES, INCLUDING ANY LOST PROFITS, LOST MONIES, ANY DAMAGE TO YOUR MENTAL OR PHYSICAL HEALTH, OR OTHER SPECIAL, INCIDENTAL OR CONSEQUENTIAL DAMAGES ARISING OUT OF THE USE, OR INABILITY TO USE THE PROGRAM.

THE PERSON USING THIS SOFTWARE BEARS ALL RISK AS TO THE QUALITY AND PERFORMANCE OF THE SOFTWARE.

Contacting the Author

Comments, questions, bug reports?

You can [register](#) Exchange with the author at the US Postal address below or on [CompuServe](#).

Please send bug reports to either e-mail address that follows.

Comments and suggestions are always welcome. Many of Exchange's users have given their feedback to the author only to have their ideas turned into features in future versions. Your voice counts!

CompuServe e-mail: 72066,1750

Internet e-mail: shawn@satyrs.csufresno.edu
or
72066.1750@compuserve.com

US mail: Shawn Kresal
P.O. Box 25834
Fresno, CA 93729



VBRUN300.DLL

(Microsoft's Visual Basic 3.0 Run Time Dynamic Linked Library)

*To run Exchange and it's installation program, you **must** have the file VBRUN300.DLL.*

HOW TO OBTAIN

This file is readily obtained from CompuServe (GO WINSHAR), the Internet, America

Online, and most any BBS from around the globe. If you have access to the World

Wide Web, you can get VBRUN300.DLL from the [author's home page](#).

WHERE TO INSTALL

VBRUN300.DLL must be in your 'path' (see your MS-DOS manual for more about your path) or, better yet, in your windows\system directory. Look in this directory if you are not sure whether or not you have VBRUN300.DLL.

OTHER VERSIONS

Note that VBRUN100.DLL and VBRUN200.DLL are **not** substitutes for VBRUN300.DLL.

Where can I get current exchange rates?

The finance or business section of any major Newspaper is one of the best places to look for current exchange rates.

With your computer and a modem, you can also get exchange rates from any of these fine establishments:

[America Online](#)

[CompuServe](#)

[Internet](#)

Exchange Rates via the Internet

There are many places you can get exchange rates from on the internet. The Holt Report is the recommended source of Information. Here are a few examples from each of it's most popular Internet routes.

usenet	misc.invest (posted daily)
gopher	wuecon.wustl.edu /Washington Univ Econ Gopher/Holt's Stock Market Reports
ftp	wuecon.wustl.edu /gd/holt (look for holt.[mmddyr] as in holt.122594 for the Dec 25, 94 report)
www	gopher://una.hh.lib.umich.edu/00/ebb/monetary/tenfx.frb or the <u>author's www home page</u>

Since the internet is in a constant state of flux, these addresses could change at any time without warning. If you find a better place to acquire exchange rates, please [email the author](#) so that your great discovery can be noted in future versions.

Exchange Rates via CompuServe

Of the basic services, the Wall Street section of the Associated Press Online (**GO APO**) is one of the best ways to get dozens of current exchange rates. Look for an article titled "New York Foreign Exchange". It is generally posted around Wednesday.

Continuously updated up-to-the-minute quotes are available in the Global Reports service (**GO GLOREP**).

Quotes on over 150 currencies are available on a next day basis in the historical quote databases (**GO PRICES, GO QSHEET,** or **GO MQDATA**). You can **GO INDICATORS** to search for the ticker symbols to use in these services.

Many of these areas are surcharged, **GO RATES** for complete details.

Exchange Rates via AOL

On America Online, you can get a wealth of exchange rates by accessing keyword **TRAVELER**. Look for the entry titled **Currency Exchange Rates**. Rates are updated every Thursday.

Latest Version of Exchange

You can always acquire the very latest version of Exchange from CompuServe or from the author's home page on the World Wide Web.

On CompuServe: Windows Shareware Forum (**GO WINSHAR**)
LIBRARY 10 - General Win Apps
Search by keywords EXCHANGE and RATES

On WWW: [Author's Home Page](#)



Author's WWW home page

The author's home page contains such things as:

- The latest shareware version of Exchange.
- Exchange rates updated daily at noon EST.
- [VBRUN300.DLL](#) online and ready to download.
- Great links to travel sites!
- Much, much, more!

Just point your web browser towards:

http://osiris.csufresno.edu/Personal/CSci/Students/Shawn_Kresal/Home.html

Registering through CompuServe

If you are a member of CompuServe, you can register Exchange online. This is the fastest and easiest method of registering. Your registered program will be emailed to you within three working days.

How to Register Exchange through CompuServe:

1. Use the Shareware Registration Forum (**GO SWREG**).
2. Designate in what section of the world you reside.
3. Choose option number 2 "Register Shareware". The "Search Database by" screen will then be presented to you.
4. Choose the first option: "Registration ID". **Exchange's registration ID is 4343.**

After you do this, CompuServe will immediately email the author with a notification of your registration. The registered version of Exchange will then be **e-mailed to your CompuServe address** where you can quickly and conveniently download it to your computer.

The cost for registering on CompuServe is US\$15 and there are no shipping and handling charges.

Please do not hesitate to [contact the author](#) if you have any questions or problems regarding this procedure.



Accuracy of Exchange

Entering Rates

When you enter an exchange rate for a currency, it is accurate to 4 decimal places. Any values entered beyond 4 decimal places will be rounded to the nearest ten-thousandth of a unit. The values you enter will always be accurate to +/- 0.0001. For example, the value 0.1234 is a completely valid rate where no adjustments are necessary because the value only extends for 4 decimal places. However, entering 0.12345 would cause the entered rate to be rounded up, resulting in the adjusted value of 0.1235 being saved as the exchange rate. Moreover, entering 0.12343 would cause the entered rate to be rounded down to 0.1234.

Reading Rates

Exchange's main screen (the "output" screen) shows equivalent money values accurate to 4 decimal places. If a calculated value goes beyond 4 decimal places, the result is rounded to the nearest ten-thousandth. For example, if a calculated equivalent value was 1.23456, this value would be rounded up to 1.2346. Likewise, if the amount calculated were 6.54321, it would be rounded down to 6.5432.

Verification

Exchange's calculation algorithms have been verified with Excel and Quattro Pro on an Intel 80386 processor. My TI pocket calculator and my Ticonderoga #2 then verified the values generated by the spreadsheets.



What is Shareware?

Shareware distribution gives users a chance to try software before buying it. If you try a Shareware program and continue using it, you are expected to register. Individual programs differ in detail -- some request registration while others require it, some specify a maximum trial period. With registration, you get anything from the simple right to continue using the software to an updated program with printed manual.

Copyright laws apply to both Shareware and commercial software, and the copyright holder retains all rights, with a few specific exceptions as stated below. Shareware authors are accomplished programmers, just like commercial programmers, and the programs are of comparable quality. The main difference is in the method of distribution. The author specifically grants the right to copy and distribute the software, either to all and sundry or to a specific group. For example, some authors require written permission before a commercial disk vendor may copy their Shareware.

Shareware is a distribution method, not a type of software. You should find software that suits your needs and pocketbook, whether it's commercial or Shareware. The Shareware system makes fitting your needs easier, because you can try before you buy. And because the overhead is low, prices are low also. Shareware has the ultimate money-back guarantee -- if you don't use the product, you don't pay for it.



Print Order Form

To print out this order form, click on the print button.

***** Registration Form For EXCHANGE ***

**

Please send a check or money order to:

**Shawn Kresal
PO Box 25834
Fresno, CA**

93729

Name _____

Address _____

City _____ State _____ Zip Code _____

E-Mail Address _____

Please check your preferred disk size: _____ 3½" _____ 5¼" HD

How did you acquire this program? (please check one)

_____ CompuServe _____ Internet _____ AOL _____ CD-ROM

_____ Local BBS _____ Software Distributor _____ Other

_____ Number of Copies of Exchange: _____ @ \$15.00 each = \$ _____

Shipping and Handling
\$ 1.50

Orders outside of continental U.S. please
add an additional \$3 for postage and handling
\$ _____

Total \$ _____

Thank you for your order.

Please include a check or money order **payable in US dollars** for the amount shown on the "Total" line above. Allow 3-4 weeks for delivery; slightly longer if paying by personal check; significantly longer if paying with rubles ;-).



J Upgrade Protection

If a major release* of Exchange is released within 60 days of your registration, you will receive the upgrade for the new version completely free of charge. No cost. No postage and handling fees. Absolutely Free!

You need not take any action, it will be mailed to you automatically.

*A major release is defined as any 0.5 or greater upgrade over the current version. I.e., if you register version 2.0 and version 2.5 or greater is shipped out within 60 days, you will receive that newer version free.



Options

Change Calculator Path

You can substitute any program to execute instead of the default Windows calculator applet when you click on Run°Calculator. Simply click Options then Change Calculator Path. You will be presented with a path-type dialog box for you to select your new calculator of choice. Find the program you want, then click Ok.

Now when you click the Run°Calculator menu option from Exchange's main screen, your calculator-of-choice will execute.

Welcome Screen Status Option

To see what Exchange is doing when it is loading, turn On the Show Loading Status At Welcome. Turning this option on will not slow down the loading of Exchange.



Distribution Policy

This version of Exchange is shareware and may be copied and distributed freely for non-commercial use (BBS's, online services, and catalog vendors included) as long as all the files are included and no part of any file is changed.

Distribution via Catalogs: Catalog vendors are automatically granted a license to distribute Exchange via their catalog provided they agree to abide by the following terms:

- a) A copy of the first catalog or listing advertising the distribution of Exchange will be sent to the author.
- b) Updated versions of Exchange sent to the distributor will be reflected in what is distributed and advertised in the catalog or listing as soon as possible.
- c) Problems or complaints about Exchange will be reported to the author.

Rates Screen

Adjust Exchange Rates

Relative Currency			Current Currency
British Pounds	1.6126		US Dollars

1 Unit of Relative Currency = [rate] of chosen currency

 Copy Rates	 Date Stamp	 Reset Rates	 Report	 Help	 Cancel	 OK
----------------	----------------	-----------------	------------	----------	------------	--------

Click on the object you'd like to have help on.

Relative Currency

The currency that you are entering your rates in as is termed as your relative currency. In other words, if your newspaper or exchange rate provider gives all exchange rates relative to the US Dollar (as in: US\$1 = £0.64, US\$1 = 86.7¥), then you would use the US Dollar as your relative currency.

NOTE: repetitive switching between relative currencies can cause an averaging effect on your data. Whenever you select a new relative currency Exchange goes through a lengthy division and multiplication process to recalculate all the other exchange rates. You should not need to change the relative currency more than once.

Copy Exchange Rates

Click this button to copy all currency names and their exchange rates to the clipboard. This will enable you to easily paste the data from Exchange into your Windows-based spreadsheet like Microsoft Excel.

Reset Rates

Clicking this button will cause Exchange to reset all currency values to their original values stored that are stored internally in Exchange. You will be asked for confirmation before this action takes place. **You cannot undo this action.**

Rate Input

Enter your exchange rates in this input box. Enter the amount of the chosen currency that is equal to one unit of your relative currency.

Read across the screen like in an equation:

1 [relative currency] = [enter your value here] [chosen currency]

As in:

1 US Dollar = 0.67 British Pounds

NOTE: Exchange will not allow any change to the rate between the relative currency and itself. In other words, you cannot make 1 US Dollar = 0.75 US Dollars.

Date Stamp

Click this button to see the last date that exchange rates were entered.



Common Questions and Problems

You can always [email the author](#) with your comments and questions about Exchange.

Q: I'm trying to install Exchange but I keep getting the error message "Cannot find file or one of it's components." What can I do?

A: You need [VBRUN300.DLL](#).

Q: The output boxes on the main screen are too small. My numbers are getting cramped in them. Is this a bug?

A: This is not a bug. It's a feature. Drag the left or right edge of Exchange's main window and the output boxes will resize themselves accordingly.

Q: I want to register Exchange from my own country.

Q: I want to avoid the added expense of getting an overseas money order.

Q: I want to eliminate the expensive shipping and handling charges to my country.

A: Register Exchange on CompuServe. [Here's](#) how.

