

# VB/Error Handler (version 4.00)

## Contents

[Overview](#)

[VB/Error Handler](#)

[Revision History](#)

[New Features](#)

[Installation](#)

[Technical Support](#)

[Registering 'VB/Error Handler'](#)

[License Agreement](#)

[Distribution Note](#)

[Acknowledgement](#)

# @Blank

**Purpose :**

**Declare Syntax :**

**Call Syntax :**

**Where :**

**Comments :**

**Examples :**

**See also :**

Show the current routine in progress.

Activate this option box to switch to the French language.

Select the drive on which your .MAK file is installed.

## Distribution Note

When you create and distribute applications that use 'VB/Error Handler', you should install the file **VBHNDERR.DLL** in the customer's Microsoft Windows **WINDOWS\SYSTEM** subdirectory, the file **[Your Application].HND** in the customer's Microsoft Windows **WINDOWS** subdirectory and all **VBHNDERR.V??** (language's files) in the customer's Microsoft Windows **WINDOWS** subdirectory. The setup kit included with Visual Basic provides tools that help you write setup programs that install your applications correctly.

*You are not allowed to distribute **VBHNDERR.LIC** file with any application that you distribute.*

Select the directory on which your .MAK file is installed.

Show the file name in progress.



Check this 'check box' if you want that 'VB/Error Handler' take care of your existing error handler.  
If this check is cleared, 'VEH' add automatically the error's management;  
If this check is checked, 'VEH' leave the routine with 'on error goto ...' unchanged.

Activate this option box to switch to the English language.

Push this command button to exit 'VB/Error Handler'.

# Revision History

See also : [New Features](#)

Version	Comments
4.00	<i>no revision.</i>
3.00	Correction of a problem to find the main module.
2.03	Correction of a problem with an internal routine when checking a filename beginning with '..\'. Correction of a problem when starting the EXE file (Error in Loading DLL).
2.02	Correction of a problem when the installation directory contains embedded period '.'
2.01	Solve a little incompatibility with the product 'VB/Tracer-Profiler'.
2.00	<i>no revision.</i>
1.30	Add some verification if you VEH'ed an existing procedure with some new functions (functions not VEH'ed).
1.20	Add error message if no Form_Load or MDIForm_Load in the Start-Up Form, or no Main() in the Master Module. Correct a problem when Add Error Handler multiple times in one project. Missing to add some definitions for multi-language message box (thanks to Ralf M. Metzling).
1.10	Missing to save the header for the On Error Goto in each routine (whoops !). Add example of Error Message Box (push Test Random Error).
1.08	add missing 'NIFTOMET.VBX'.
1.07	<i>no revision.</i>
1.00	Initial release of the 'VB/Error Handler'.

# New Features

See also : [Revision History](#)

Version	Comments
4.00	Add an online form with dynamically traced procedure. Multiple call of the same routine are displayed with a counter
3.00	<i>no new features.</i>
2.03	<i>no new features.</i>
2.02	<i>no new features.</i>
2.01	<i>no new features.</i>
2.00	Add the checking for the existing 'On [Local] Error Goto ...' other than these adden by 'VB/Error Handler'. Change of the look.
1.30	<i>no new features.</i>
1.20	<i>no new features.</i>
1.10	Add the management for using Multi-Language Message Box (see Test Random Error).
1.08	<i>no new features.</i>
1.07	Modification of TimeOut future to handle RETRY or CANCEL automatically after TimeOut has occured.
1.00	Initial release of the 'VB/Error Handler'.

# VB/Error Handler

When you select 'Add' or 'Remove', a backup of modified files is made in sub-directory of the directory installation from 'VB/Error Handler'.

When you select 'Add', the program adds automatically a module called 'VBERRHND.BAS' to your .MAK file. This file is used to perform the error's management. You don't need to modify this file for your application. An another file [MAK name].HND is created and contains all datas for the error's management. This file must be copied into the WINDOWS directory.

Moreover, a call to 'mclnitID' routine is placed into the Main() routine (if exist) or into the MDIForm\_Load (if exist) or into the first Form\_Load encoutered. This call have the 5 following parameters :

Call mclnitID(-1, True, 3, True, False)

Parameter 1 must be set to :

-1 if you want to use the English Language for the Error Message Box.

VB\_LNG\_FRENCH to use French Language

VB\_LNG\_DUTCH to use Dutch Language

VB\_LNG\_GERMAN to use German Language

VB\_LNG\_ENGLISH to use English Language

VB\_LNG\_ITALIAN to use Italian Language

VB\_LNG\_SPANISH to use Spanish Language

Parameter 2 must be set to :

TRUE if you want to make a logging of all errors (the log filename is placed into the WINDOWS directory).

FALSE if no logging.

Parameter 3 must be set to :

TRUE if no waiting time (user must be activate RETRY or CANCEL button).

1 for 10 seconds, 2 for 20 seconds, 3 for 30 seconds to wait before automatic action (see below).

Parameter 4 must be set to :

TRUE if you want to set the first button als default (RETRY = continue after waiting time has occured).

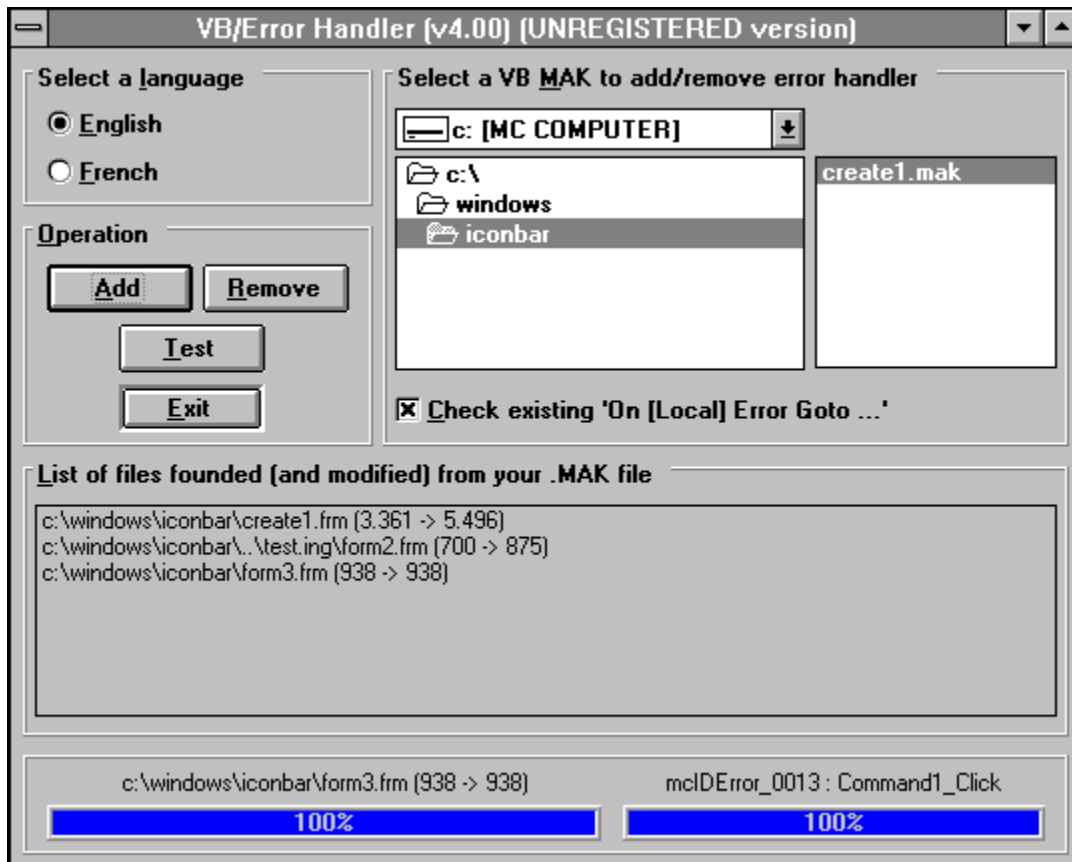
FALSE if you want to set the second button als default (CANCEL = stop after waiting time has occured).

Parameter 5 must be set to :

TRUE if you want to see an online form with displayed procedure.

FALSE if no online form.

Below a snapshot of 'VB/Error Handler'. Click on hot spots (hand cursor) to see a popup explain.



This list shows all files founden in your .MAK file.  
The list shows the current size and the new size of all files.



# Installation

## **Demonstration version :**

The files VBHANDERR.DLL and VBHANDERR.HLP should be copied in your WINDOWS directory.  
The files VBHANDERR.LOG, VBHANDERR.HND, VBHANDERR.V?? should be copied in your WINDOWS directory.

## **Registered version :**

The files VBHANDERR.DLL, VBHANDERR.HLP should be copied in your WINDOWS\SYSTEM directory.  
The files VBHANDERR.LOG, VBHANDERR.HND, VBHANDERR.V?? should be copied in your WINDOWS directory.  
The file VBHANDERR.LIC should be copied in your WINDOWS directory.

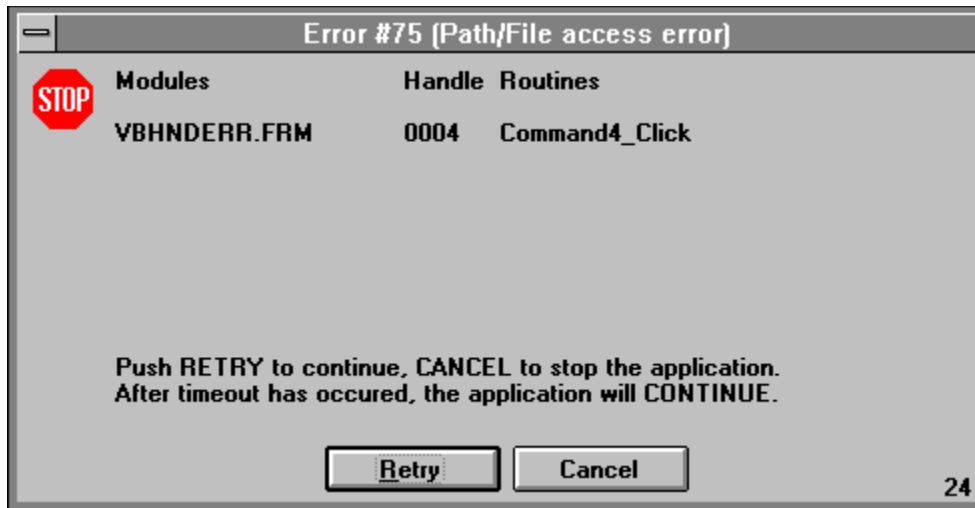
## **Distribution note:**

When you create and distribute applications that use 'VB/Error Handler', you should install the file [VBHANDERR.DLL](#) in the customer's Microsoft Windows [WINDOWS\SYSTEM](#) subdirectory, the file [\[Your Application\].HND](#) in the customer's Microsoft Windows [WINDOWS](#) subdirectory and all [VBHANDERR.V??](#) (language's files) in the customer's Microsoft Windows [WINDOWS](#) subdirectory. The setup kit included with Visual Basic provides tools that help you write setup programs that install your applications correctly.

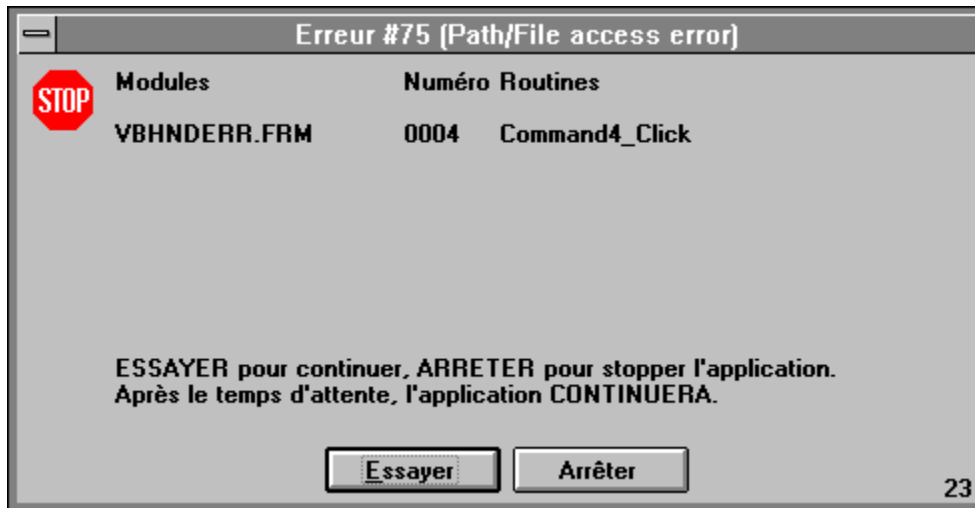
*You are not allowed to distribute 'VBHANDERR.LIC' file with any application that you distribute.*

Push this command button to start the test of a random error to see the display. The Message Box display is a true simulation of the result of a trapped error.

Example of an Error Message Box in English :



Example of Error Message Box in French :



Push this command button to start the removing of the error's management.  
The file 'VBERRHND.BAS' will be removed (if present) from your .MAK file.  
The file '[Your Application .MAK name].RHE' will be created and contains the following informations :  
    name of the module/frm.  
    old size of the module/frm.  
    new size of the module/frm.

Push this command button to start the adding of the error's management.

The file 'VBERRHND.BAS' will be added (if not already present) to your .MAK file.

The file '[Your Application .MAK name].AHE' will be created and contains the following informations :

- name of the module/frm.

- old size of the module/frm.

- new size of the module/frm.

The second part of 'Total same last handle' is the last handle of the routine in progress.

The first part of 'Total same last handle' is the total call of the last handle of the routine in progress.

This list shows the following topics (cyclic 25 last routines) :

Counter	the number of calling the same routine.
Handle	the handle of the routine.
Module	the name of the module.
Routine	the name of the routine in the module.

Push this button if you want that the OnLine form is always on TOP.  
Repush this button to reset the on TOP position.



Push on the RETRY button to try to continue the application.

This part of the Error Message Box displays the action to take by the operator and the action if a TimeOut occurs.

This part of the Error Message Box displays the full path to retrieve the procedure on which the ERROR has occurred.

Show the progress of the current file in the .MAK file.

Show the progress of the current line in the current file.

Select the .MAK file.

# Technical Support

**Only registered users can receive support and update.**

To receive support, you must specify your registration ID.

However, any report on any problem are the welcome.

The following information may be of help to you in streamlining your efforts to resolve any technical problems you may have with 'VB/Error Handler' program.

## **GPF?**

If you are getting a GPF (General Protection Fault), write down the information that is displayed when the error occurs. Also, make a note of what your code was doing (in general terms.)

## **ISOLATE IT**

Try to isolate the cause of the error. If at all possible, step through your code with F8 and F9. Try to find the one line of code that is causing the error.

## **SCALE IT DOWN**

If at all possible, try to reproduce the problem in a small test program that you can send in. Send your test on CompuServe.

## **CompuServe Mail:**

**Name : Michaël RENARD**  
**CIS : 100042,3646**  
**Internet : 100042.3646@compuserve.com**

I'm on CompuServe one time a day (after 19 o'clock European Time).

# License Agreement

The 'VB/Error Handler' program and its associated DLL is not public domain software or free software.

The 'VB/Error Handler' program and its associated DLL is copyrighted, and all rights are reserved by its author: Michaël Renard.

You are licensed to use this software on a restricted number of computers. You may copy the software to facilitate your use of it on as many computers as there are licensed users specified in the 'VB/Error Handler' license file '**VBHNDERR.LIC**'. Making copies for any other purpose violates international copyright laws.

*You are not allowed to distribute '**VBHNDERR.LIC**' file with any application that you distribute.*

## **Disclaimer:**

This software is sold AS IS without warranty of any kind, either expressed or implied, including but not limited to the implied warranties of merchantability and fitness for a particular purpose. The authors assume no liability for any alleged or actual damages arising from the use of this software. (Some states do not allow the exclusion of implied warranties, so the exclusion may not apply to you.)

**Your use of this product indicates that you have read and agreed to these terms.**



# Acknowledgement

This help has been written by using [ForeHelp](#) v1.04 from [ForeFront, Inc.](#)

# Overview

'VB/Error Handler' is a program to add/remove automatically the error's management in a VB .MAK file.

'VB/Error Handler' have an another approach to minimize the size of the .EXE. It use an external file did contains all routines founded in the source file. Only a basic module will be added to your application (not a .FRM module).

I hope that 'VB/Error Handler' will be a great advantage for you and for your application.

'VB/Error Handler' works **ONLY** with modules **SAVED IN TEXT MODE**.

# Registering 'VB/Error Handler'

The easiest way to Register 'VB/Error Handler' is through CompuServe's SWREG forum.

- 1) [GO SWREG](#)
- 2) Choose Register Shareware.
- 3.1) 'VB/Error Handler' [SWREG ID](#) is : **#4379** (**ONLY** if you're a **REGISTERED** user of 'TIME TO WIN' #4045).
- 3.2) 'VB/Error Handler' [SWREG ID](#) is : **#4380** (only if you're **NOT** a **REGISTERED** user of 'TIME TO WIN' #4045).

As soon as I receive notification of your registration (usually 1 - 3 days) I will send you out via e-Mail the latest version and a license file for one site (only if latest version is available (not currently in test)) if not you receive the license file for one site.

You also qualify to receive new versions of 'VB/Error Handler' during one year.

The price for 'VB/Error Handler' is fixed at \$20.00 (**ONLY** if you're a **REGISTERED** user of 'TIME TO WIN' #4045).  
The price for 'VB/Error Handler' is fixed at \$30.00 (only if you're **NOT** a **REGISTERED** user of 'TIME TO WIN' #4045).

If you're **NOT** a **REGISTERED** user of 'TIME TO WIN' and you register 'VB/Error Handler' at the low price (\$20.00), I can't send to you the product and I wait until that you register 'TIME TO WIN'.

*This price is much a contribution to my works that a payment. When you register 'VB/Error Handler', you help me to develop better products and others products.*

'VB/Error Handler' is written in Visual Basic 3.0 and its associated DLL in C and compiled using Visual C++ 1.51. The DLL code has been optimized for 80386 use with the 'maximize speed' option.

## Others products :

- |  |   |
|--|---|
| 1) 'TIME TO WIN' VB 3.0).  | SWREG #4045 (more over 570 routines for |
| 2) 'TIME TO WIN Light' VB 3.0).                                  | SWREG #5808 (more over 360 routines for |
| 3) 'VB/Tracer-Profiler'  | SWREG #5294.                            |
| 4) 'Bundle of TIME TO WIN, VB/Error Handler, VB/Tracer-Profiler' | SWREG #5499                             |

Push on the CANCEL button to stop immediatly the application.

Display the Time remaining before an automatic decision will be made.



