

ComTimer 1.0

Copyright 1996 by Göran Strömstén

E-mail: gstromsten@ngs1.pp.fi

ComTimer 1.0 is intended to help you control the cost of using Internet.

This software is shareware, ie if you like it and continue to use it, then you're supposed to pay the author the price of this program, USD 10.

HOW IS COMTIMER USED ?

If you use for example the dialer included with Win95, then you have to start ComTimer either before or after you've been connected to the net. If you choose to start it before connecting, then you'll have to define an average calling time before connection. 30 seconds has proved to be a suitable value for me.

If you use for example Trumpet Winsock or some other program which use scriptfiles, you'd enter ComTimer into the file in such a way, that ComTimer is started after connection has been established. In this case you don't need to define any average time.

The average time for connecting is deduced from the total time per session, when ComTimer calculates the cost for using the net.

The average time for connecting, charge per minute and eventual monthly base charge are entered under SETTINGS. You enter the monthly base charge if your operators' policy is to charge you a monthly minimum fee which allows you to use a certain amount of time on the net before they start charging you more.

ComTimer is designed to be minimized upon the Taskbar, where the time and cost spent is shown. That's why the window with the digitalcounter may seem to be large, as it is intended to be seen only when wanted.

ComTimer saves the information about your surfing on the net and the cost spent doing this. You can later remove this data, when you get the bill for the period in question. You do this and other manipulation of data with the separate utility ComLog which is included in the package.

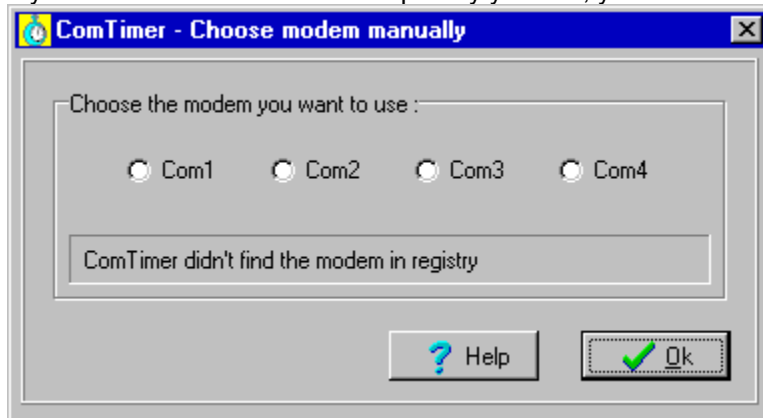
ComTimer configures automatically. This won't work in some special cases. Look at Choose modem manually to learn why and what to do if you encounter this.

Copyright

Choose modem manually

ComTimer locates the modem in your computer. Sometimes there can occur such a situation, when ComTimer is unable to do this. In this case you'll be asked to give the com-port used by the modem. The cause for this is that something did go wrong when you installed Win95 on your PC and the modem did get a label which can't be understood by ComTimer. ComTimer locates the modem by reading directly from the Registryfile, where all data about your PC is stored.

If you have to choose the modempport by yourself, you'll see the following dialog:



Check first from the Control Panel's modemfunction where the modem is installed, before selecting the port here. Once when you've chosen the port, ComTimer'll use it allways. This data is stored in the file ComTimer.ini.

NOTE:

If you choose the wrong modempport, then ComTimer'll ask you again to give the right port.

Copyright

ComTimer version 1.0 Copyright by Göran Strömstén 1996

E-mail: gstromsten@ngs1.pp.fi

Postladress: Göran Strömstén, Heikelgränd 6, FIN-02700 Grankulla, Finland

If you've got opinions or comments about this program, mail me ! I'd also appreciate if you had the kindness to further spread this software and telling me where you found it.

Special thanks to Alberto Garcia Alvarez, Spain (e-mail: agarcia@etsiig.uniovi.es), who has written the VCL for the digits.

All names and productnames mentioned are such or registered such of their respective holder.

The author denounces all responsibility for whatever the use of Comtimer might cause. The author does neither give any kind of warranty for ComTimer, ie the user uses this application at his own risk.

ComLog

COMLOG

ComLog is a simple utility that allows you to view a list over time spent on the net. This list includes the date and time for beginning each session and its duration. If ComTimer is activated, you'll be able to watch the contents of the log, but you can't remove items from it.

You remove entries from the log by marking them with the mouse and pressing on the button EMPTY.

Remove allways entries for a period after you've recieved the bill for the period in question.