

Microsoft Internet Explorer 3.0 (Beta) Reviewers' Guide

A Step Ahead

April 1996



TABLE OF CONTENTS

INTRODUCING MICROSOFT INTERNET EXPLORER 3.0.....

WHAT'S NEW IN MICROSOFT INTERNET EXPLORER 3.0 FOR DEVELOPERS AND WEBMASTERS.....

ACTIVE X TECHNOLOGIES.....

ActiveX Controls.....

ActiveX Script.....

ActiveX Documents.....

Internet Explorer 3.0 as an ActiveX Control.....

Java Applets.....

HTML Extensions.....

SECURITY.....

Secure Communications.....

Trusted Software.....

WHAT'S NEW IN MICROSOFT INTERNET EXPLORER 3.0 FOR END USERS.....

COMMUNICATE AND COLLABORATE.....

NetMeeting.....

Internet Mail and News.....

Multilanguage Support.....

PERSONALIZE YOUR INTERNET EXPERIENCE.....

Personalize Your Browser.....

Accessibility.....

Ratings.....

Administration Kit.....

OVERVIEW FOR DEVELOPERS AND WEBMASTERS.....

ACTIVE X TECHNOLOGIES.....

INTERNET EXPLORER 3.0 - ACTIVE X CLIENT PLATFORM.....

ACTIVE X CONTROLS.....

Internet Explorer 3.0 Built-In ActiveX Controls.....

ActiveX Control Pack.....

ActiveMovie Control.....

PowerPoint Animation Player.....

Cool Controls.....

ACTIVE X TOOLS.....

ACTIVE X INTERNET LIBRARIES.....

ACTIVE X SCRIPTING.....

Visual Basic Scripting Edition.....

Java Scripting.....

ACTIVE X DOCUMENTS.....

HTML WEB AUTHORING.....

Enhanced Stylesheet Support.....

Enhanced Frame Support.....

Enhanced Table Support.....

Enhanced Font Support.....

TrueType Font Support.....

Scrolling Marquees.....

Inline Video Playback.....

Background Sounds.....

3-D Add-On.....

ACTIVE X TECHNOLOGIES SERVER SIDE.....

STANDARDS.....

SECURE WEB EXPLORING.....

Digital Code Signing.....
Secure Sockets Layer 2.0/3.0 (SSL), Private Communication Technology 1.0 (PCT).....
CryptoAPI.....

OVERVIEW FOR END USERS.....

COMMUNICATE AND COLLABORATE.....

Multilanguage Support.....
Microsoft Internet Mail and News.....
Microsoft NetMeeting.....

PERSONALIZE YOUR BROWSER.....

PERSONALIZE YOUR BROWSER.....

Customizable Toolbar.....
Customizable Start Page.....
Customizable Quick Links.....
Customizable Internet Ratings.....
Internet Explorer Administration Kit.....
Manageable Favorites and History.....
Netscape Bookmark Conversion Tool.....

QUICK START.....

Internet Setup Wizard.....

EASY TO LEARN.....

Internet Tutorial.....
Internet Explorer Home Page.....
Integration with Windows Operating Systems.....

EASY TO EXPLORE.....

Hot Tracking Button.....
Animated Toolbar.....
Download Information Dialog Box.....
Improved Frames Navigation.....
Print Table of Links.....
Smooth Scrolling.....
Search Button.....
Smart URLs.....
Shortcut Menus.....
Internet Shortcuts.....

ACCESSIBILITY.....

Keyboard Navigation.....
Large Font Option.....
Other Accessibility Features.....

FAST EXPLORING.....

ISDN Support.....
Smallest Working Set.....
Quick Links.....
Fastest Scripting.....
Fast Connect.....
Smart Caching.....
32-bit Multithreading.....
Progressive Rendering.....
Fast Text Mode.....

THE MICROSOFT INTERNET EXPLORER FAMILY.....

Internet Explorer 3.0 Beta for Windows 95 and Windows NT.....
Internet Explorer 2.0 for the Macintosh.....
Internet Explorer 2.0 for Windows 95.....
Internet Explorer 2.0 for Windows 3.1.....



Overview

Introducing Microsoft Internet Explorer 3.0

Microsoft announces its next generation Web platform, Microsoft® Internet Explorer version 3.0 with ActiveX™ Technologies. The 3.0 release provides developers and Webmasters with the next generation architecture for creating active Web content and applications while providing an easy-to-use browser for end users that enables them tailor their Internet experience to match their personal preferences.

Using Internet Explorer's built-in support for ActiveX technologies, HTML 3.2 extensions, and Java™ applets and scripts, developers can create exciting, new content. Its suite of communication tools enables collaboration with anyone anywhere in world, and its keyboard navigation, customizable toolbar, and ratings support personalizes the Internet experience.

What's New in Microsoft Internet Explorer 3.0 For Developers and Webmasters

The new open architecture for creating programmable, active content and applications for the Internet.

ActiveX Technologies

Microsoft Internet Explorer 3.0 is the client-side platform that delivers ActiveX technologies, an open architecture that moves the Internet beyond static documents by enabling the creation of more active, exciting Internet experience. Bridging Sun's Java technology and Microsoft OLE component technology, ActiveX gives developers a rich platform for creating innovative, interactive applications that can run on the Internet Explorer 3.0 client and provide end users with a more compelling Web experience.

ActiveX Controls

Developers can create active components for Web pages by writing ActiveX Controls. ActiveX Controls create unlimited possibilities for what users can see and do on the Internet. ActiveX Controls are software components that include the thousands of existing ActiveX controls (formerly OLE controls), Java applets, and new ActiveX controls, such as ActiveMovie.

ActiveX Script

With its support for Visual Basic® Script or Javascript, Microsoft Internet Explorer 3.0 provides the most comprehensive and language independent script capabilities. You can use any scripting language, such as VBScript or Javascript, in your HTML code to

create interactive pages that connect ActiveX Controls, Java applets, and other software components.

ActiveX Documents

Support for ActiveX Documents enables you to open richly formatted documents, such as a Microsoft Excel spreadsheet, directly in the browser. ActiveX Documents are displayed in Web browsers by using document viewers.

Internet Explorer 3.0 as an ActiveX Control

With the new open architecture, Microsoft Internet Explorer 3.0 can host ActiveX Controls or function as an ActiveX Control, enabling developers to use Internet Explorer 3.0 to add browsing and Internet communications capabilities to their applications.

Java Applets

Microsoft Internet Explorer 3.0 and the Microsoft Just-In-Time Java compiler will provide the fastest way to run Java applications in a Web page in the second beta release of Microsoft Internet Explorer 3.0. By including appropriate hooks for Java applets, Microsoft Internet Explorer 3.0 enables you to use scripting languages to link them to ActiveX controls, giving them more power and extended functionality.

HTML Extensions

Microsoft Internet Explorer 3.0 provides the broadest support of any browser for HTML standards, including HTML 3.2. This includes support for borderless and floating frames, stylesheets, and tables. By embracing and extending HTML 3.2, Microsoft Internet Explorer 3.0 offers unprecedented ease of use and flexibility for developers and making pages easier to read for users.

Security

Secure Communications

You can safely purchase items on the Internet through Microsoft Internet Explorer support for SSL 2.0, SSL 3.0, and PCT 1.0

Trusted Software

You can safely download software programs with Internet Explorer 3.0 support for code signing, which enables you to identify who published the software before you download it and verify that no one tampered with it.

What's New in Microsoft Internet Explorer 3.0 For End Users

The easy-to-use browser that personalizes your Internet experience

Communicate and Collaborate

NetMeeting

Chat with groups of people while sharing thoughts on a group whiteboard. Microsoft NetMeeting is the only communication software that enables groups of people share applications, allows more than two people to participate in a conference, and is based on international standards, ensuring worldwide communications.

Internet Mail and News

Send and receive mail quickly with our new SMTP and POP3 mail client, and subscribe to your favorite newsgroups with our flexible newsreader.

Multilanguage Support

Read pages authored in many languages with Microsoft Internet Explorer 3.0 support for international character sets. In addition, within 90 days of its release, Internet Explorer 3.0 will be available in 23 languages, helping you transmit your information to people all over the world.

For more information about the Microsoft Internet Explorer family, see Appendix B.

Personalize Your Internet Experience

Personalize Your Browser

Customize your toolbar, Favorites folder, and your start page to suit your preferences. In addition, built-in hyperlinks to important sites enable you to quickly connect and start exploring.

Accessibility

Explore the Web using your keyboard, and adjust screen fonts to the size you prefer.

Ratings

The Content Advisor feature enables parents to set access to sites according to the appropriateness of their content.

Administration Kit

Build a customized version of Internet Explorer for your company.

Introducing Microsoft Internet Explorer 3.0 for Windows 95

Overview for Developers and Webmasters

The new open architecture for creating programmable, active content, and applications for the Internet.

ActiveX Technologies

The Microsoft Internet Explorer 3.0 is the client-side platform that delivers ActiveX technologies, the most programmable, extensible, and open Internet architecture available. This architecture enables developers and Webmasters to create dynamic Internet content and applications through its support for independent programming languages, complete component communication, extensive scripting, and the broadest support for HTML standards.

Embracing both Java and Microsoft's industry standard OLE object technology, ActiveX preserves your investments in applications, tools, and source code while letting you create innovative Internet applications. ActiveX technologies are built in to Internet Explorer 3.0, including standard Microsoft components that have been revised to communicate to and from the Internet. These components, such as the WININET and URLMON libraries, means that writing Internet applications is as easy as writing applications for the operating system. Plus, you can use these libraries to make your current networking and stand-alone applications ready for the Internet. These many familiar tools and technologies enable you to integrate your ActiveX applications into your existing client/server foundation rather than displacing it.

ActiveX technologies also provides built-in security services in Microsoft Internet Explorer 3.0, including support for SSL 2/3, PCT 1.0 security standards, digital code signing, and CryptoAPI. This means developers can write Internet applications that securely communicate and transmit information over the Internet and that can be safely downloaded from the Internet.

Internet Explorer 3.0 - ActiveX Client Platform

Microsoft Internet Explorer 3.0 functions both as a stand-alone container in which ActiveX Controls, other software components and applications can run, and as an open, programmable interface that enables you to build applications that easily communicate with the operating system and Internet. Microsoft Internet Explorer 3.0 functions as an ActiveX client by including the support you need to host ActiveX Controls in Web pages, display HTML Web pages and ActiveX documents, use ActiveX scripting, and communicate with the Internet through ActiveX Internet libraries.

ActiveX Controls

Imagine having the power of today's applications for use on the Internet. That's what you get with the new Microsoft Internet ActiveX Controls, a superset of OLE controls which combine the versatility of the OCX with the power of the most up-to-date Internet protocols. ActiveX Controls are live objects that can be inserted into Web pages as well as any Visual Basic, Visual C++®, Visual FoxPro®, Microsoft Access, or other application that is an ActiveX Control container.

After it is created, you can embed ActiveX controls in Web pages as easily as embedding graphics in Web pages. When a user accesses a Web page that references an ActiveX Control, the control runs in Microsoft Internet Explorer 3.0. If the control does not already exist on the user's computer, Microsoft Explorer 3.0 checks to see if the control comes from a trusted site through verifying its digital signature. For more information about code signing, see the "Security" section later in this Reviewers' Guide.

Any control you write can interact with thousands of existing ActiveX controls (formerly OLE controls), Java applets, and new ActiveX controls, such as ActiveMovie, and any Component Object Model (COM) object. ActiveX Controls can "talk" to other controls and can be embedded in any application or tool because its interfaces are documented and open.

Internet Explorer 3.0 Built-In ActiveX Controls

Microsoft Internet Explorer 3.0 Beta 1 includes ActiveX Controls that let you add sound and scrolling documents on your Web page.

- **RealAudio ActiveX Control.** Enables you to insert a RealAudio player right in your Web page.
- **Marquee ActiveX Control.** Enables you to insert an HTML document in your Web page and have it scroll.

ActiveX Control Pack

With the release of Microsoft Internet Explorer 3.0 Beta 1, Microsoft is also providing the Internet Explorer 3.0 ActiveX Control Pack, which includes the following ActiveX Controls.

ActiveMovie Control

ActiveMovie delivers the next generation of cross-platform digital video technology – on the desktop and the Internet. With ActiveMovie, you can view AVI and QuickTime video formats, in addition to MPEG video and audio, from within Microsoft Internet Explorer 3.0. Its software-based MPEG playback delivers television-quality video on mainstream systems. ActiveMovie also supports other media formats including WAV, AU, AIFF, and MIDI audio. The extensible architecture of ActiveMovie enables other media formats and functionality to be supported and enhanced by Microsoft and third-parties—ensuring a rich media solution for today and the future.

For more information about ActiveMovie, see:
<http://www.microsoft.com/imedia/activemovie/activem.htm>

PowerPoint Animation Player

The new Microsoft PowerPoint® Animation Player for ActiveX makes it easy to animate a static HTML pages without having to learn a complex programming language like Java or buying expensive, complex multimedia software. With the PowerPoint Animation Player, you can create banners or advertisements with your company name, sounds, and pictures, and place them across the top of your HTML page. You can even create client-side image maps by using PowerPoint 95 Interactive Settings functionality. Using the PowerPoint 95 Loop Continuously feature, you can even set a banner or advertisement to play and advance without visitor input.

For more information, see

<http://www.microsoft.com/mspowerpoint/internet/player/default.htm>.

Cool Controls

A set of useful ActiveX controls will be built-in to Microsoft Internet Explorer 3.0 in the second beta release, including:

- **Label.** Displays text at any angle.
- **Preloader.** Downloads graphics automatically for faster viewing later.
- **Timer.** Makes a Web page perform certain actions at certain times.
- **ViewTracker.** Updates Web pages dynamically as the user scrolls through it;
- **StockTicker.** Changes data continuously.
- **Popup Menu.** Displays a Windows popup menu through ActiveX Scripting.
- **Chart.** Creates charts in various forms that can be updated from a server.
- **Animated Button.** Displays frames of an AVI.

ActiveX Tools

Developers can create ActiveX Controls in any language using any tool, including a wide variety of familiar tools, such as Visual Basic 5.0, or new Internet-specific tools, such as Microsoft's Java development tool.

With the upcoming release of Visual Basic 5.0, developers will be able to write ActiveX Controls and convert existing VB code to ActiveX Controls with a simple point and click operation. With Microsoft's Java Development Tool, you will be able to use all the features of Microsoft Developer's Studio—a great debugger and editor, integration with COMs and Windows® APIs—to create Java applets that will run in Internet Explorer 3.0 second beta release. Plus, developers can use all the macros and documents that they write for Microsoft Office applications in Microsoft Internet Explorer 3.0.

To get a jump-start on building ActiveX Internet applications and content, developers can use the Microsoft ActiveX Development Kit (MADK). It includes all the tools and information developers need to successfully build Internet or intranet solutions using Internet Information Server.

Webmasters can author and manage tools with Microsoft FrontPage, the easiest and fastest way to create and manage a Web site. Microsoft FrontPage comes with templates and editors that let you easily create HTML pages, including links, hotspots, tables and frames.

ActiveX Internet Libraries

Microsoft Internet Explorer 3.0 includes ActiveX Internet Libraries, which are the standard WININET and URLMON Microsoft components that have been upgraded to read and write to the Internet. Developers can call on these libraries to add Internet capabilities to their own applications. Among other things, ActiveX Internet Libraries make opening a Web page from the Internet as simple as opening a file from your hard disk.

ActiveX Scripting

With its support for ActiveX scripting, Microsoft Internet Explorer 3.0 provides the fastest, most comprehensive, language-independent scripting capability. You can use any scripting language, such as Visual Basic Script or Javascript, in your HTML code to create interactive pages that link together ActiveX Controls, Java applets and other software components.

This means you can create an Internet application controlled by many kinds of scripting languages. Because Internet Explorer 3.0 supports ActiveX Scripting, you can use VB Script and Javascript in your Web pages, or use another scripting languages by adding an additional DLL.

Visual Basic Scripting Edition

VB Script, which is a subset of the Visual Basic language, is a high-performance scripting language designed to create active content on Web. It enables you to link and automate a wide variety of objects in Web pages, including ActiveX Controls and Java applets. Plus, it is fully compatible with Visual Basic and Visual Basic for Applications. Microsoft will make the VBScript source code available under license free of cost to any browser vendors and application vendors who want to support VBScript in their applications.

In addition to linking together ActiveX controls and Java applets, you can use VB Script to build pages that respond to questions and queries, ask questions, check user data, calculate expressions, and link to other applications and 3-D animations. With VBScript, developers can trap events from ActiveX Controls, invoke methods, and modify properties of ActiveX Controls.

Because VBScript code is simple to write and is always maintained in source code in the Web page, it is easy to modify. Plus, developers can enable their VBScript code to run across platforms, including Windows, Macintosh, and all major UNIX systems.

Java Scripting

Javascript, which provides the same functionality as VBScript, also enables you to create active content on Web. Microsoft's implementation of Javascript enables you to link and automate a wide variety of objects, link together ActiveX controls and Java applets, and build pages that respond to queries and calculate expressions.

ActiveX Documents

ActiveX Documents enables you to open richly formatted documents, such as Microsoft Excel, directly in the browser. Support for ActiveX Documents enables you to open an application, including its own toolbars, from within the browser. Internet Explorer becomes the frame in which users can browse and view these documents. To the users, it seems as if they are running the stand-alone application complete with toolbars, menus, and all other user interface elements, while network administrators can use existing documents on their intranet site without having to resave them all in HTML format.

ActiveX Documents are a set of extensions to OLE Documents, the compound document technology of OLE. The extensions are in the form of additional interfaces that allow what mostly looks like an embeddable in-place object to represent an entire document instead of a single piece of embedded content. As with OLE Documents, ActiveX Documents involve a container that provides the display space for ActiveX Documents and servers that provide the user interface and manipulation capabilities for DocObjects themselves.

HTML Web Authoring

All the cool content on the Web can be viewed in Internet Explorer 3.0 because it supports the latest HTML standards, including HTML 3.2. Plus, it is the first browser to fully implement W3C stylesheets, table tags, and borderless and floating frames. This full-scale implementation of HTML enables you to present a greater variety of information in a more interesting, dynamic format than before.

Enhanced Stylesheet Support

Internet Explorer 3.0 is the first commercial browser to support the W3C stylesheet standards. Stylesheets give you the same flexibility with design and layout that you have with desktop publishing programs by enabling you to attach style (for example, fonts, colors, and spacing) to HTML text tags.

By applying separate style tags to text tags, you ensure that all browsers can view the basic text and structure of your Web page while presenting more sophisticated designs for browsers that support stylesheets, such as Internet Explorer 3.0. In addition, stylesheets provide the following advantages:

- Give you greater Web page design flexibility by enabling you to control margins, line spacing, and placement of design elements, and specify colors, fonts, and point sizes.
- Enable you to apply a stylesheet to diverse documents to create a standard design, saving time and letting a company develop a signature Web style.
- Make it easier to index pages because indexing software only has to read the structural tags.

Enhanced Frame Support

Support for HTML 3.2 frame standards enables you to divide a Web page into several panes, or *frames*. Each frame displays a different HTML page, so you can display numerous levels of information without requiring the user to navigate to a different page. Microsoft Internet Explorer 3.0 is the first browser to support borderless, non-scrolling, and floating frames. This comprehensive implementation of frames gives you the following advantages when designing Web pages:

- Opening multiple frames (HTML pages) in one place enables a wholly new kind of Web page. With frames, you can create sophisticated layouts that add and mix a greater variety of sounds, video, animation, and different background colors and patterns in one place. Plus, with multiple frames you can organize information more effectively. For example, you can include a menu in one frame from which people can select items to view in a separate frame.

- Floating frames, a revolutionary new feature, essentially enable you open a browser within a browser. Anywhere you can insert an image on a Web page, you can now insert a floating frame. You can specify its size and whether it has a border, and align it with other text and images on the page.
- Elimination of borders and scroll bars on individual frames enables you to create seamless sections on your Web page that can simulate and surpass the look and feel of magazine pages.

Enhanced Table Support

Support for the latest HTML 3.2 table tags gives you greater control over how you can display text, graphics, and background colors and images, letting you create graphically interesting, easily readable tables. With Microsoft Internet Explorer 3.0's implementation, you can:

- Assign different colors and background to cells within a table.
- Align text along a baseline.
- Specify that borders be displayed internally or externally. Before, you could only turn on or off borders for each cell and the table itself.
- Specify that a cell span more than one column or row in a table.

Enhanced Font Support

Enables you to specify the size, face, and color of a font so that you can control exactly how your text looks. This is an important step forward in Internet publishing. Until Microsoft Internet Explorer, Web authors were either forced to deliver content as large bitmapped images, which were time-consuming to download, or just use the font selection of the browser with no guarantees of how the page would look to the user.

TrueType Font Support

Microsoft Internet Explorer 3.0 supports TrueType® font technology, which is a standard feature of both the Windows and Macintosh operating systems. TrueType provides the highest quality screen fonts available, which is critical as people read more and more information on screen from the Internet. They use anti-aliasing, which smooths out jagged fonts, and rich hinting, which makes small text more readable on screen.

Authors can specify which fonts they want to use in their HTML documents by using the tag or CSS1 Style Sheets. Microsoft provides a set of free TrueType fonts for Webmasters to incorporate in their sites to improve readability and give them more control over the typographic image of their site. TrueType Web fonts for both Windows and the Macintosh are available free of charge on www.microsoft.com/truetype/

Scrolling Marquees

Extends HTML standards by including support for the MARQUEE tag, which enables you to specify a section of text to be used as a moving marquee on a page. These eye-catching callouts are great for special sales offers and other time-critical information.

Inline Video Playback

Supports HTML 3.2 extensions that let you play AVIs on a Web page. You can specify whether the video plays immediately after people open the page, or in response to a mouse click.

Background Sounds

Supports HTML 3.2 extensions that let you play background sounds in your Web page, including sounds recorded in any of the popular formats available on the Internet today, including WAV, MIDI, AU, and AIFF. You can use background sounds to create dramatic introductions to pages, or to continually play in the background. You can specify that sounds overlap one another, or repeat in a continuous loop.

For more information about Microsoft Internet Explorer 3.0's support for HTML tags, see www.microsoft.com/ie/.

ActiveX Technologies Server Side

Microsoft Internet Explorer 3.0 is fully integrated with ActiveX technologies for servers, including integration with the Microsoft Internet Server API (ISAPI), which allows Webmasters and developers to easily extend Web servers in a fast and scaleable manner, and with Internet Database Connection, which allows you to insert database capabilities into Web pages.

Standards

Microsoft actively participates in Internet Engineering Task Force (IETF), is a member of the Internet Architecture Board (IAB), is on the board of the International Multimedia Teleconferencing Consortium (IMTC), and works closely with the World-Wide-Web Consortium (W3C) to ensure an open, agreed-upon set of Internet standards for everyone. We appreciate and support the W3C effort in the management of Internet standards.

More information about the W3C efforts and these new specifications, is available at <http://www.w3.org>. Microsoft Internet Explorer 3.0 for Windows 95 supports HTML 3.2 and follow-on standards developed by IETF and W3C.

Secure Web Exploring

People want assurances that programs and software components they download over the Internet are from a software publisher they trust and that the programs haven't been tampered with. Plus, they want to know their communications are private and that other people cannot electronically eavesdrop when they transmit information. With Microsoft Internet Explorer support for SSL 2.0 and SSL 3.0, PCT 1.0 and digital code signing, you can download code safely and be sure that no one overhears your Internet communications. Secure communications means that you can purchase items with your credit card on the Web without worrying about a third party intercepting your credit card number.

Code signing is built using CryptoAPI, an extensible security solution that provides security services to Windows and enables developers to incorporate cryptographic security into their Windows-based applications.

Digital Code Signing

Microsoft Internet Explorer 3.0 supports code signing, which provides accountability, similar to that of shrink-wrap around a software box, for code downloaded from the Internet. This technology can be broadly applied to areas such as software licensing and distribution, in addition to anti-piracy efforts.

Unlike retail software, software distributed on the Internet today is largely anonymous. You cannot know for certain who published the software and whether it was tampered with after it left the software provider. Internet Explorer 3.0 enables you to identify who published the software before it is downloaded and verify that no one tampered with it.

- **Open.** Microsoft's implementation of code signing supports existing certificate standards, X.509 certificate format, and PKCS #7 signed data standards.
- **Software Publishing Certificate program.** Microsoft is working with industry-leading certificate authorities to create a set of certificates, based on standard X.509 and PKCS #7 formats, which software publishers can obtain to digitally sign and identify their code. Tools for code-signing are available through the ActiveX SDK, and will be integrated into Microsoft and leading third-party development tools.

Secure Sockets Layer 2.0/3.0 (SSL), Private Communication Technology 1.0 (PCT)

Support for SSL 2.0, SSL 3.0, and PCT 1.0 secures general-purpose business and personal communications on the Internet or intranets by providing the following.

- **Private communications.** SSL 2.0, SSL 3.0, and PCT 1.0 create a secure channel and encrypt communications, ensuring that eavesdroppers are unable to overhear a conversation.
- **Client/Server Authentication.** SSL 3.0 authenticates the client or server and allows either the client or server to require authentication of the other.

- Support for client authentication through SSL 3.0 enables you to present digital identification to Web sites that request it. This enables you to verify your identity across the Internet so that you can access subscription services. If you obtain more than one certificate, Internet Explorer 3.0 enables you to control which certificate you present to different Web sites.
- SSL 2.0, SSL 3.0, and PCT 1.0 server authentication ensures that you are communicating with your intended party. In addition, authentication ensures the recipient of a message that only the sender could have sent the message, and that the message has not been altered in transit. SSL 3.0 authenticates the client or server and allows either the client or server to require authentication of the other.
- SSL 2.0 and SSL 3.0 separates authentication from encryption, enabling applications to use authentication that is significantly stronger than the 40-bit key limit for encryption allowed by the U.S. government for export.

CryptoAPI

Support for CryptoAPI 1.0 provides developers strong cryptographic security that can be incorporated easily in Win32® applications. This security model separates applications from cryptographic details, so that applications always use the strongest security available without code modifications. In addition, these applications are readily exportable, because CryptoAPI includes base cryptographic functions that have been approved for export.

The delivery of CryptoAPI through Internet Explorer 3.0 assures easy integration of cryptography in your Win32 applications. Common cryptographic functions accessible through CryptoAPI include key generation and exchange, data encryption and decryption, hashing, digital signatures, and signature verification. CSP (Cryptographic Service Provider) modules interface with CryptoAPI and perform cryptographic functions. Internet Explorer 3.0 will install Microsoft's Base Provider CSP, on Windows 95.

- **Extensible security.** CryptoAPI isolates the application from the CSP modules and allows different CSPs to be used as required without changing the application. CryptoAPI allows vendors to develop strong encryption CSPs for Win32 systems and efficiently deliver them to customers to the maximum extent allowed by existing law.
- **Applications readily exportable.** Given that Microsoft has approval to export the Base Provider internationally, applications that call the CryptoAPI can be assured of being in compliance with U.S. export laws.
- **Open.** CryptoAPI's open architecture allows developers a choice of CSPs. In addition, CryptoAPI will be made available across the Windows, Macintosh, and UNIX operating systems.
- **Leverages existing skills and solutions.** CryptoAPI enables Windows developers to use existing Win32 programming

expertise to incorporate cryptography in applications or existing solutions.

Overview for End Users

Microsoft Internet Explorer 3.0, the next generation Web platform, is now available. Internet Explorer's easy interface and customizable toolbar make browsing a breeze. Its customizable start page brings up-to-date news, links, and cartoons to you daily. Internet Explorer contains security and ratings technology you can trust to protect your data from intruders and help you choose appropriate content for your children. Plus, it supports all the newest HTML standards so you can view all the latest content on the Web.

Communicate and Collaborate

Microsoft Internet Explorer 3.0 enables you to communicate and work with people all over the world through the most complete suite of communication tools available, including built-in e-mail, newsreading, and conferencing clients. They simplify the task of international communications because they are based on international, open, industry-backed, T.120/H.323 standards. Plus, Microsoft Internet Explorer 3.0 breaks international language barriers by providing support for reading pages authored in other languages.

Multilanguage Support

Within 90 days of its release, Internet Explorer 3.0 will be available in 23 languages, helping you send your information to people all over the world. Plus, you'll be able to read pages authored in almost any language. Today, with most browsers, if you try to view a page authored in any of the Japanese language forms, it is illegible. Microsoft Internet Explorer 3.0 solves this problem by letting you select the character set of the authored language, enabling you to view the content correctly.

Microsoft Internet Mail and News

Microsoft Internet Mail and News is the easy way to send and read electronic mail and news on the Web. It takes full advantage of Windows 95 to give you quick access to e-mail and newsgroups. Microsoft Internet Mail and News provides great support for multiple news servers and binary attachments.



Figure 1 Microsoft Internet Mail and News provides Internet e-mail and newsgroup capabilities.

Microsoft Internet Mail. This simple yet powerful client uses Internet-standard SMTP and POP3 protocols to let users send and receive Internet e-mail through their Internet Service Providers' mail servers. An easy-to-use toolbar provides access to the most commonly used e-mail functions. In addition, Microsoft Internet Mail provides the following features:

- Full support for Internet standards, including SMTP/POP3 and MIME
 - The ability to sort mail on a variety of columns, and configure the columns used to display messages
 - The ability to organize messages in folders and easily move them to and from the file system
 - Spell-checking of mail if Microsoft Office 95 spell checking is installed
 - Remote usage and online usage
 - A preview pane for easy reading of messages
 - Ability to personalize your mail with automatic signatures
 - An address book to enable you to keep commonly used e-mail addresses at your fingertips
-
- **Microsoft Internet News.** This easy and full featured Internet newsreader supports full participation in Internet newsgroups, letting people subscribe, post, and read news on Internet USENET newsgroups and intranet discussion groups.
 - Microsoft Internet News shares the same user interface as the Internet Mail client, including the preview pane and folder hierarchy, with additional options specific to newsreading. It also offers high performance and support for multiple simultaneous news servers. In addition, Internet News offers the following features:
 - Full support for Internet NNTP standards
 - Ability to subscribe to your favorite newsgroups for easy access.
 - Conversation threads displayed to help you easily follow a topic
 - Ability to subscribe to your favorite newsgroups for easy access
 - Ability to switch between your favorite newsgroups with a single click of the mouse
 - Automatic decoding of binary attachments
 - Ability to personalize your messages with automatic signatures
 - Caching of messages and headers for great performance
 - The ability to read news offline (coming soon)

Microsoft NetMeeting

This conferencing application enables you to set up a real-time audio and data communication over the Internet. It extends the common telephone call with the power of a shared computer connection. You can talk to anyone anywhere in the world.

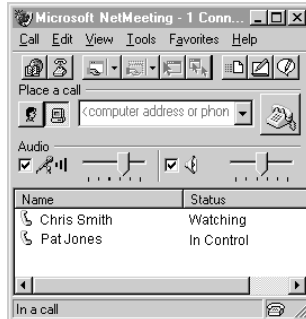


Figure 2 Make a telephone call on the Internet with NetMeeting

Try This:

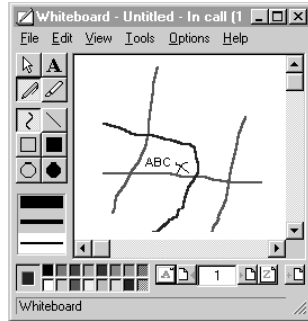
If you are going to use Microsoft NetMeeting on the Internet, type `uls.microsoft.com` when NetMeeting asks you for the conferencing server name.

Click the directory button and then select the person you want to call.

If you are going to use Microsoft NetMeeting on an Intranet, click the address button and type the machine name, ip address, or modem phone number of the person you would like to call.

While you're talking to them, you can share data in the following ways:

- **Share applications.** You can open an application on one computer and share it with all connected computers even when the connected computers do not have that application installed. For example, you can share a Microsoft Word document with three co-workers. Each person now sees an image of your program on his or her computer. You can review the document together and take turns editing.
- **Transfer files.** Use the same modem connection to transfer files without interrupting the conversation.
- **Chat area.** Type messages in your own private chat room. Perfect for online meetings on an Intranet or an online social gathering on the Internet.
- **Draw on a whiteboard.** Brainstorm ideas or sketch out a design by opening a whiteboard on all connected computers. The whiteboard comes with drawing and text tools, which you can use to sketch an organization chart, draw a diagram, type action items, and perform similar tasks. You can point out your co-workers' errors by using a remote pointer or highlighting tool, or take a "snapshot" of a window and then paste the graphic on a page.



- **Figure 3** Draw on a shared whiteboard while talking.

□ Try This:

1. On the NetMeeting Tools menu, click Whiteboard.
 2. On the Tools menu, click Pen.
 3. On the Option menu, click one of the drawing tools, and start drawing.
-
-

You can also host just a voice conference or just a data conference. On an intranet, you might have the voice connection over the office phone system and the data connection over the LAN.

NetMeeting adheres to major international standards from both the International Telecommunications Union (ITU) and the Internet Engineering Taskforce, to guarantee broad interoperability between applications and across platforms. For example, you can share a whiteboard between different applications on different platforms thanks to support for standard protocols such as the ITU's T.120.

NetMeeting also supports "multi-point" connections, which allows more than two people to join in conversations. Voice conferencing is currently limited to connections between two points, but up to five points for data conferencing, and even more simultaneous users through network-based conferencing services. It includes a tool for connecting to and scheduling the use of network-based conferencing services.

Personalize Your Browser

Though the Internet provides great promise as an exciting new communications tool, many people cannot reap its benefits, for simple reasons. Research shows that new users still find it too difficult to connect, navigate, download, and communicate on the Web. Microsoft Internet Explorer 3.0 removes the mystery from getting up and running on the Internet. Improvements to the toolbar reduce the confusion about downloading, and pre-loaded favorites quickly link you to cool sites.

Plus, you can customize your toolbar, Favorites folder, user preferences, and start page to personalize your experience of the Web, making it match your personal characteristics and preferences.

Personalize Your Browser

Customizable Toolbar

You can change the size of the toolbar by dragging the Address bar or the Quick Links button up or down, or to the left or right, to remove or display them. Independent software vendors can customize the toolbar by putting their own graphic on the toolbar, adding their sites to the Quick Links button, and adding their own start and search pages.

Customizable Start Page

Enables you to customize the Microsoft Network home page (www.msn.com) to reflect your personal preferences. You can set the MSN home page to retrieve and update the latest information about your favorite stocks, cartoons, news, sports and more, including the following:

Favorite Links	Weather	Ski Reports
Search Engines	News Services	United Media Comic Strips
Ziff-Davis Computer News	Music Clips	Movie Links
Stock Quotes	Sports Scores	TV Listings



Figure 4 Customizable MSN Home Page (Will add Explorer)

Customizable Quick Links

Microsoft Internet Explorer 3.0 comes pre-loaded with cool Web sites to help people easily connect to the Web. Plus, people can select Web sites to automatically dial into and update the content of their cached sites. The next time they run Internet Explorer 3.0, the sites will have already been updated. In addition, Web authors and developers can edit the registry to include their own pre-loaded links.

Customizable Internet Ratings

Many people are hesitant to browse the Web because of security concerns. They want assurances that children cannot visit sites that display inappropriate information. Microsoft has been working closely with the Platform for Internet Content Selection (PICS) committee to help define standards for rating Internet content.

Microsoft Internet Explorer 3.0 is the first browser to support the PICS standard, which enables you to control access to rated Web sites, or use third-party rating bureaus (see PICS specification for more details, at <http://www.w3.org/pub/WWW/PICS>) to control the types of content you want to see. By choosing different levels of allowable language, nudity, sex, and violence, you can filter out unwanted information, or block users from being able to access objectionable material. Parents or supervisors can set passwords to allow access to any Web site, and you can block users from being able to access Web sites that aren't rated.

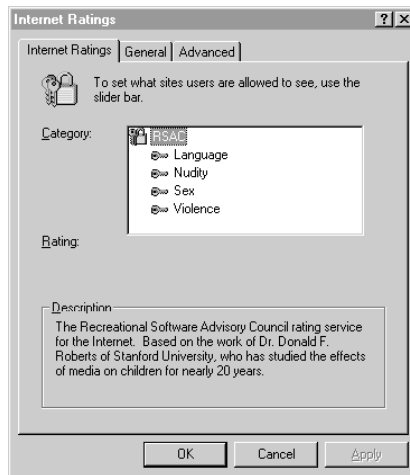


Figure 5 Set access to Web sites based on their content.

Internet Explorer 3.0 reads special tags placed on pages by Internet content providers to determine whether that page meets your criteria for what types of content should be displayed. Rating services, such as RSACi, allow for distribution of these PICS tags from their web site (<http://www.rsac.org>).

Try This:

1. On the View menu, click Options, and then click the Ratings tab.
 2. Type a supervisor password that determines who can set the ratings.
 3. Set the level of ratings you would like in each of the following categories: nudity, language, violence, sex.
-
-

Internet Explorer Administration Kit

You can build a browser for your company with the Internet Explorer Administration Kit (IEAK) The IEAK enables organizations to create and distribute a Web browser that reflects the specific needs of their organizations and end users. A simple wizard guides corporate administrators or ICP/ISP distributors through the steps necessary to create self-installing versions of Internet Explorer that have customized start pages, search pages, and Favorites folders.

This cross-platform solution supports the creation of master floppy disk and CD-ROM versions of Internet Explorer 2.0 for Windows 95, Windows NT® Workstation, and Windows 3.1. Future releases will also support the Apple® Macintosh® platform.

In addition, the CD-ROM version enables you to customize the background graphic and title bar of the installation application. The CD-ROM version also includes the popular Microsoft Office Viewers and Internet Assistants for Microsoft Word, Excel, and PowerPoint®, and the Microsoft Virtual Reality (VRML) add-in.

The IEAK is available at no cost to organizations who have a fully executed Microsoft Internet Explorer distribution agreement and comply with the Microsoft Internet Explorer usage guidelines. For more information, or to download the IEAK, see <http://www.microsoft.com/ie>

Manageable Favorites and History

With Microsoft Internet Explorer 3.0, you can easily manage your favorite sites and the history of sites you have visited because they are stored as shortcuts in standard Windows 95 folders. You can organize and categorize them, enabling you to easily share them with other people. Internet Explorer displays the contents of these folders as cascading menus off the Favorites menu.

Because Favorites and History are shortcuts, you can easily apply all the standard file operations, such as copying and deleting, to them. You can also use the Find command in Windows 95 to search for a particular shortcut. With Windows Explorer, you can sort them alphabetically, or by last accessed date, or other criteria.

You can also mail a favorite shortcut to someone else by copying it into a mail message. Plus, you can use that shortcut as part of a signature file, so that people reading your message could double-click your shortcut, and go automatically to your WWW site.

□ Try This:

1. From the favorites menu, choose Open Favorites.
 2. When the Favorites folder appears, right-click the folder icon in the upper-left corner of the window. You should see a shortcut menu, enabling you to search, share, and explore this folder, and more. This is a convenient way to search a large tree of favorite places, using the default Windows 95 search engine to find the site you want.
-
-

Netscape Bookmark Conversion Tool

When you install Microsoft Internet Explorer 3.0, it automatically converts all Netscape Bookmarks into shortcuts in your Favorites folder.

Quick Start

Microsoft Internet Explorer 3.0 gets you up and running on the Web quickly by providing built-in Internet dial-up connection.

Internet Setup Wizard

The Internet Setup wizard configures Windows 95 to use TCP/IP Networking, and Dial-up Networking. If you don't already have an account with an Internet service provider, the Internet Setup wizard can sign you up for the Microsoft Network, reducing the

whole sign-up and setup procedure to nothing more than typing your name and address, selecting a payment method, and swapping disks.

If you already have an Internet service provider, the Internet Setup wizard will not install the MSN components. During configuration of your TCP/IP protocol stack and Dial-Up Networking, you will need to know the following information:

- The name of your service provider, your account name, password, and dial-up telephone number
- Your IP address and subnet mask (these might not be required if your service provider automatically assigns these)
- The address of your DNS server

To start Internet Explorer, just double-click the Internet icon on the Windows 95 desktop. To try the Internet Setup wizard, click the Start button, point to Programs, point to Accessories, point to Internet Tools, and then click Internet Setup Wizard.

Easy to Learn

Using Microsoft Internet Explorer 3.0 is natural for Windows 95 users. Internet Explorer 3.0 uses familiar Windows 95 technologies, such as shortcuts and drag-and-drop, to minimize the amount of new terminology and operations that you have to learn.

Its user-interface improvements simplify working on the Web. Pausing the mouse over large, tracking buttons on the toolbar displays a short description. A status bar at the bottom of the browser windows displays descriptions of links, downloading information, and URLs. Plus, you can customize and easily change your preferences for using the browser.

For beginners as well as more experienced users, Microsoft Internet Explorer 3.0 provides links to resources for learning how to use the Internet and for learning more about Microsoft Internet Explorer 3.0 product information and support. Plus, it includes links to Internet search engines that help you find your way around the Web.

Internet Tutorial

You can learn more about using the Internet through a tutorial for beginners on www.msn.com. The tutorial, "New to the Internet," covers the basics of Internet navigating and searching.

Internet Explorer Home Page

You can learn more about Microsoft Internet Explorer 3.0 on www.microsoft.com/ie/. On this page you can get answers to the most frequently asked questions about Internet Explorer, learn about its cool features, link to other pages that showcase its features, or download tools that help you design and create exciting content on your own Web page.

Integration with Windows Operating Systems

Internet Explorer 3.0 is a great example of an application specifically designed for Windows operating systems because it:

- Takes full advantage of ease-of-use improvements in Windows operating systems by supporting shortcuts, the right mouse button, Favorites, drag-and-drop, OLE, and more
- Multitasks well with other applications on Windows operating systems because it's a Win32 application.
- Cooperates well with other communications applications because it uses TAPI.
- Works with over 900 different modems because it uses the Windows operating systems' UNIMODEM drivers.
- Interoperates with other Internet client applications because it uses WINSOCK.
- Shields the customer from technical details like Internet protocols, MIME data types, and configuring helper applications, by registering these components in the Windows operating systems registry

□ Try This:

To see the associations in the registry, click View, click Options, and then click the File Types tab. Note that Internet Explorer has added in associations for GIF, JPEG and X Bitmap images, in addition to AU and AIFF sounds files and a number of other types. Note also that protocols and viewers associations, like Gopher, Telnet and others, are stored here as well. Fundamentally, the Windows 95 File Types database is being extended to encompass new types of data and protocols that exist now, or may exist on the Internet in the future.

Easy to Explore

The familiar look and behavior of Microsoft Internet Explorer 3.0's user interface enables you explore the Web with ease.

Hot Tracking Button

Larger, friendlier buttons that change color when the mouse hovers over them increase the ease with which people can navigate. Plus, text descriptions under the buttons can sized according to your Windows appearance.

Animated Toolbar

Internet Explorer 3.0 communicates downloading information more effectively than before by animating the toolbar's background while downloading is in progress. Developers can customize the animation by replacing the default with their background image.

Download Information Dialog Box

Provides information about the size of the file and an ongoing estimate about the time remaining before the download is complete.

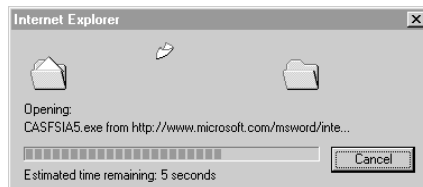


Figure 6 Keep track of the status of file as it is downloading.

Improved Frames Navigation

Microsoft Internet Explorer 3.0 reduces the confusion about navigating and printing frames. Now, when you click the Back button, you can retrace the frames you visit instead of simply jumping back to the last Web page (URL) you visited.

Print Table of Links

When you print a Web page from within Internet Explorer 3.0, you can also choose to print a table of links that specifies URLs. Instead of just seeing underlined links on your printed page, a table appears at the end of the document telling you the address of each link.

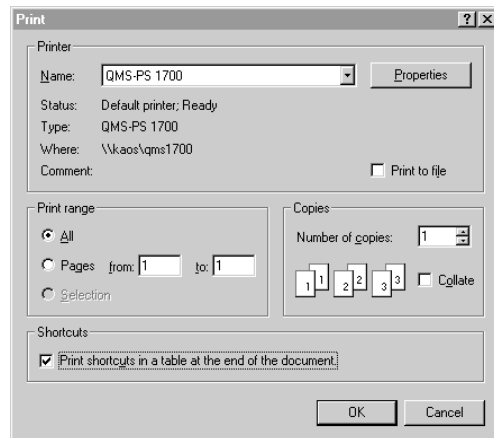


Figure 7 Print a table that tells you where all the links on a Web page go.

Try This:

1. Find a Web page you want to print.
 2. On the File menu, click Print, and then select the option Print Shortcuts In A Table At The End Of The Document.
-
-

Smooth Scrolling

Lets you keep track of content while scrolling through a page packed with information. Pressing the PAGE UP or PAGE DOWN keys , or using the scrolling arrows, makes the page scroll like a video without any jerky movements.

□ Try This:

While viewing a Web page, press the PAGE DOWN or PAGE UP key to see how the page scrolls.

Search Button

A search button on the Internet Explorer toolbar (the globe with the magnifying glass) provides instant access to powerful Internet search engines like Yahoo, Lycos, and Infoseek. These search engines are accessible at any time just by clicking the Open Search Page button. Plus, you can change your default search page whenever you want by clicking the View menu, clicking Options, , and then clicking the Start And Search Pages tab and following the instructions on the screen.

Smart URLs

Microsoft Internet Explorer 3.0 intelligently determines the protocol of a particular site.

□ Try This:

1. Instead of opening "The Internet " from your desktop and then opening a particular site, just click the Start button, and then click Run.
 2. Then type the name of the site (for example, `www.microsoft.com`). This even works from the command line (at the C:\ prompt, type **start `www.microsoft.com`**).
-
-

Shortcut Menus

Internet Explorer follows Windows 95 conventions of providing context menus for both graphics and Web page information displayed on Internet sites. These are accessed by

Figure 9 Shortcut menu for Web page with link

right-clicking the item. Shortcut menus provide quick access to those commands which apply to the selected item.



Try This:

Try right-clicking a graphic on a page, the page itself, and a hyperlink on that page.

Internet Shortcuts

Internet Explorer extends Windows 95 shortcuts to include global Internet sites. These Internet shortcuts are identical to basic Windows shortcuts, except that instead of pointing to a file on the LAN or on a PC, they now point to a URL (Uniform Resource Locator) on the Internet. Like a standard Windows shortcut, an Internet shortcut can be embedded in a document, mailed to a friend or colleague, or stored in a folder on your computer.

Microsoft Internet Explorer 3.0 is “drag-and-drop enabled” for creating shortcuts and much more. You can easily capture a graphic from a Web page by just dragging it to your desktop. Or you can drag a graphic or a shortcut back into the Internet Explorer window to display it.

Try This:

Try dragging a hyperlink from a Web page onto the desktop. An Internet shortcut is created.

To create a shortcut to the current page, rather than a hyperlink on the current page, drag the status icon from the lower right-hand corner of the Internet Explorer window onto the desktop.

Drag a graphic on the page onto the desktop. A GIF file is created on the desktop.

Drag links to different kinds of data and servers (like Gopher, FTP, or mail) onto the desktop. Different kinds of shortcuts are created depending on the type of server.

Double-click one of the shortcuts on the Desktop. This loads it into the Internet Explorer. Drag another of the shortcuts to Internet Explorer and drop it in the window. The page that the shortcut represents will be loaded. Drag a graphic into Internet Explorer. The graphic will be loaded.

Accessibility

Microsoft Internet Explorer 3.0 provides greater Internet accessibility for all people by being the first browser to provide any significant accessibility features. It enables keyboard navigation of the Web, and provides the option to increase font size on any Web page, and other accessibility features.

Keyboard Navigation

With Microsoft Internet Explorer 3.0, you can explore the Web from the keyboard by pressing TAB and SHIFT+TAB to navigate back and forth between image and text links, hotspots in client-side image maps, and more.

As you move to or click a hyperlink or image, a one-pixel border is drawn around it so you can see what is selected. This works for client-side image maps, too—even for hotspots that are circles or polygons!

Other keyboard shortcuts include the following.

ENTER to go to a link	ALT+LEFT ARROW and ALT+RIGHT ARROW to go back and forward	BACKSPACE and SHIFT+BACKSPACE to go back and forward
SHIFT+F10 to display a context menu for a link	CTRL+R to refresh the current page	ESC to stop downloading the page
CTRL+O to go to a new location	CTRL+N to generate a new window	CTRL+S to save the current page
CTRL+TAB to cycle between frames	SHIFT+TAB and SHIFT+CTRL+TAB to go backwards through links and frames	F5 to refresh the page

Large Font Option

With Font button on the toolbar, you have complete control over the size in which fonts are displayed.

Other Accessibility Features

Provides features that let text-only browsers read your page, including tooltips for pictures that tell you the location (URL) of a link and support for the ALT tag that enables you display alternate text for images.

Fast Exploring

People browsing the Web today are easily frustrated by the amount of time it takes to download graphics or software, view all the material on a site, and connect to different sites. Microsoft Internet Explorer 3.0 works with the currently available bandwidth by supporting several simple mechanisms to quicken the pace of browsing.

ISDN Support

Internet Explorer 3.0 enables you to connect to the Internet through an ISDN line, a high-speed digital telephone line that enables you to transmit information on the Internet at much greater speeds.

Smallest Working Set

The code for Internet Explorer 3.0 is small and efficient, increasing its performance and taking up less space on people's computers than its competitors' browsers.

Quick Links

Internet Explorer 3.0 comes pre-loaded with useful and cool sites on the Web, helping people quickly get up and running on the Internet.

Fastest Scripting

Internet Explorer 3.0 provides the fastest scripting support for any programming language of all Internet browsers on the market.

Fast Connect

Internet Explorer 3.0 uses HTTP-KeepAlive, an enhancement to the HTTP protocol, to improve performance on Web servers that support it. HTTP Keep-Alive allows Internet Explorer 3.0 maintain an open connection to the Web server for multiple downloads. Other browsers close the connection after each graphic is downloaded from the server, and then must reopen it. Since most Web pages are made up of several items, HTTP-KeepAlive improves performance and reduces server loading when used in conjunction with a KeepAlive-enabled server.

Smart Caching

Internet Explorer enables you to cache pages and graphics between Internet sessions, letting you work with Web content offline (for example, from the seat of an aircraft). Caching pages also enables you to connect more quickly to frequently used pages. Plus, improvements to Internet Explorer 3.0's caching mechanism let you set when you want Internet Explorer to refresh the page. Internet Explorer 2.0 refreshed the page every time you visited a site even if the content hadn't changed.

The HTTP Last-Modified-Since and Expires attributes are used to determine when a cache page is stale. Internet Explorer takes a relatively conservative approach to cache management, checking the Last-Modified-Since and Expires attributes of every object on a Web page. Other browsers only validate the page itself, and not the content, leaving them vulnerable to stale caching errors.

□ Try This:

To check on your cache and history settings, click the View menu, click Options, and then click the Advanced tab.

32-bit Multithreading

Internet Explorer 3.0 is a complete 32-bit application, building on Windows services such as the Telephony API (TAPI), and on the native 32-bit TCP/IP stack. Internet Explorer uses multiple threads of execution to deliver excellent responsiveness. This means that Internet Explorer 3.0 is more robust than 16-bit browsers and provides smooth multitasking performance, which is an advantage during lengthy downloads.

Progressive Rendering

Progressive rendering delivers complex graphics quickly, enabling users to view low-resolution version of graphics during download, eliminating the need to wait for the

entire transfer before viewing the image. Progressive rendering support is included for both GIF and JPEG format images.

Fast Text Mode

Instead of waiting for large graphics to download before displaying text and hyperlinks, Internet Explorer 3.0 loads the text first and inserts placeholders for slow loading images while they are downloading. This enables you to view the most important information and links much faster than conventional browsers.

Appendix A

The Microsoft Internet Explorer Family

The Microsoft Internet Explorer family of products unlocks the potential of the Internet for people at home or at work because it supports a broad range of platforms and is produced in the most languages. By providing cross-platform and international language support, Microsoft provides the best Internet browser for individuals and organizations.

Microsoft Internet Explorer 2.0 for Windows 95 is currently available in 23 different languages, including Russian, Chinese, and Hungarian, helping bring people together from all over the world. The new Internet Explorer 3.0 for Windows 95 continues to set the standard for international support by providing the ability to view Web pages created in many countries from within the local browser. Within 90 days of final release, Microsoft Internet Explorer 3.0 will be available in 23 languages. Microsoft Internet Explorer for Windows 3.1 will be available in 20 languages and Microsoft Internet Explorer for the Macintosh will be available in 9 languages.

Microsoft offers Internet Explorer for the Macintosh, Windows 95, Windows 3.1, and Windows NT platforms.

Internet Explorer 3.0 Beta for Windows 95 and Windows NT

Includes a common executable for both the Windows NT 4.0 and Windows 95 operating systems. Microsoft Internet Explorer for Windows NT 4.0 will be released within 30 days of the release of Microsoft Internet Explorer 3.0 for Windows 95. This browser includes HTML extensions for frames, stylesheets, tables and fonts, giving designers more control over layout and typography. Plus, it supports ActiveX technologies, letting application developers create ActiveX Controls that provide in-line, interactive viewing and editing.

Internet Explorer 2.0 for the Macintosh

Supports all the features of Internet Explorer 2.0 for Windows 95 and adds a number of important features, such as support for Netscape Plug-ins. In addition, it supports a richer set of dynamic cross-platform media features.

Internet Explorer 2.0 for Windows 95

Supports existing HTML standards, such as tables, while advancing HTML with new improvements such as inline video, background sounds, and marquee effects. Microsoft Internet Explorer 2.0 delivers SSL support and support for Internet shopping applications. And Internet Explorer delivers increased performance with extensions to the HTTP protocol that maintain open channels between the server and the browser.

Internet Explorer 2.0 for Windows 3.1

Supports most existing Microsoft Internet 2.0 features and will be released by the end of April 1996.