

Startup Manager Users Guide

Installation Requirements

Startup Manager requires the following hardware and software to function correctly.

1. An AT or better computer with an 80286/80386 or 80486 CPU.
2. Windows version 3 or better running in either standard or 386 enhanced mode.

What does it do

Startup manager duplicates and enhances the function of the load= and run= lines of the win.ini configuration file. For those who are new to windows these parameters specify the programs to be run automatically when windows starts. This program provides the following features in addition to those provided as standard.

1. This program provides a point and click method of specifying the programs to be run at windows startup that is (hopefully) more readily useable than the standard mechanism provided.
2. In addition to the ability to run programs minimised and normal provided as standard you can specify that programs be run hidden or maximised.
3. Provision is made for specifying a startup directory and file to load. neither of these features are available as standard.

Installation

To install the software on your computer follow these steps

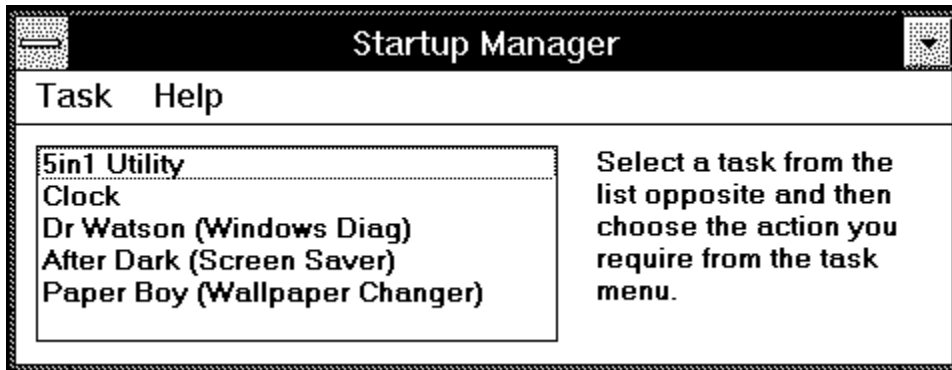
1. If vbrun100.dll is not installed on your system then copy this file to your windows directory
2. Copy the files 'suman.exe' and 'surun.exe' from the distribution diskette to some place convenient.
3. Add the program 'suman.exe' to a group in your program manager. Consult the documentation that came with your copy of windows if you are unsure how to do this.
4. edit the file 'win.ini' located in the windows directory. find the load= line and change it to read load=\yourpath\surun.exe. 'yourpath' is the location of the executable file on your computer. (eg 'load=c:\usr\windows\util\surun.exe'). Save the file when you have made this change.

Using The Program

This software is comprised of two programs. A user interface program is used to maintain the list of tasks to be loaded at windows startup. The other part of the software is the loader program. Provided that you have installed this program

correctly in the 'win.ini' file as discussed previously this program is of no interest. If you are having problems using this software then the most likely cause is that you have made a mistake in modifying 'win.ini' check to ensure the filepath in the 'load=' line is valid and points to the surun.exe program.

To load the user interface program double click on its icon in the program manager. When the program has loaded it will display its main window as follows.



These controls function as follows.

1. The list of tasks is used to select which task the task menu items should act upon.
2. The "Task" menu provides facilities for adding new task definitions, modifying existing definitions and removing existing definitions.
3. The "Help" menu gives access to the "About" program information panel.

Defining the tasks to run at windows startup.

The "Task" menu contains the functions required to maintain the list of programs to be run at windows startup. I hope that making use of these functions will be fairly intuitive. The following is intended as a brief guide to get you started.

- | | |
|------------|---|
| Define New | This will display the task definition window to allow you to enter a new task definition. the items in this window are as follows. "Task Description" - the description that will be used by the Startup Manager program to refer to this task. "Program to load" - the full path to the program you wish to load. "File to Load" - the name of a file you wish to be loaded by the program when it starts. This will only work properly if your program supports the entry of filenames on the program command line (most programs do). "Startup Directory" - This item is optional, if it is filled in then before starting your program the directory specified here is made the current working directory, the directory specification may include a drive specification but should not include a trailing '\'. "Window Properties" - This allows you to specify the window properties of a |
|------------|---|

windows application. To control these properties when starting DOS applications you should use a PIF file. Some applications have fixed ideas about how they should appear. These applications will ignore the politely worded request to maximise - minimise or hide themselves passed to them by startup manager and appear in whatever state their programmer decided was suitable. For applications that do respond click on the button that corresponds to how you wish to program window to initially appear (or not appear as the case may be).

The browse buttons in this window may be used to fill in the details in the adjacent text boxes. If you click on the browse button a file dialogue window will open. from this you can select the program or file to load and the directory to start in.

When you have finished defining your task click the OK button to store the task definition. Once you have done this your task will be started automatically as specified at windows startup by "Startup Manager".

- | | |
|-----------------|---|
| Modify Existing | This will display the task definition window discussed above and allow you to modify the task definition of the task that is currently selected in the list of tasks. |
| Delete Existing | This will remove the task that is currently selected in the list of tasks . A warning dialogue is displayed before the task is deleted. |

Caveat's

Startup manager allows you to specify that tasks should be run hidden. This should not cause any problems but you will need access to a program that allows you to manipulate hidden windows if you wish to interact with a hidden task. My Task Manager Plus program offers this facility.

Distribution Policy

This program is not in the public domain. I retain the copyright to this work. On the other hand it is not shareware as you do not need to pay me anything if you like this program and decide to use it.

Please feel free to use this program. If you wish to distribute this program then please ensure that your distribution disk or archive contains the executable files "suman.exe" and "surun.exe", vbrun100.dll (unless you store this file separately) and this file (suman.wri).

If you wish to make a contribution then any amount of money or a postcard from your home town will be greatly appreciated.

If you wish to contact me either because you would like to make a contribution or because you have found a bug then I may be reached as follows.

e-mail Janet : SG_CALLOW@UK.AC.OPEN.ACS.VAX

Surface Mail

Internet : sg_callow@vax.acs.open.ac.uk
Simon Callow
Text Processing Systems Officer
The Open University
Walton Hall
Milton Keynes
Bucks
MK7 6AA

Why?

I have always thought that the way that startup tasks were specified to windows was not terribly in keeping with the windows point & click interface. My first solution to this problem was to write a macro using "Wilson Windoware's" "WinBatch" program to give me a point and click way of specifying the tasks I wanted loaded along with windows. This worked fine but was useless without "WinBatch" and so I couldn't share my program with my friends and the world at large. As the problem was never serious enough to warrant writing a windows application in 'C' I never got around to doing any more than my "WinBatch" macro solution. Then along came Microsoft's Visual Basic. This greatly simplified the job of writing a program and writing the program has given me some useful experience in using Visual Basic to hook into the power of windows via the DLL routines that windows provides as a part of its API. My thanks to my wife for putting up with me and to Microsoft for taking the Mystery out of Windows programming by providing the world with "Visual Basic". I hope that you enjoy using this software and find it useful.

Legalese

I make no guarantees as to the suitability of this software for any purpose. Before you use or install this software be aware that so doing is entirely at your own risk. I accept no responsibility for anything that may occur as a result of using this software.