

# RGB Editor for Windows 95/NT

Copyright © 1995-1998 by Gregory Braun. All rights reserved.

## Overview

RGB Editor is a small utility useful for selecting and creating RGB colors for programming projects. The values of the red, green and blue components are displayed and easily transferred to your source code files. Custom colors can be defined and saved for use in other coding projects. Custom colors swatches can also be copied to the clipboard.

RGB Editor is fully Y2K compliant and will work with MS Windows 98 as well as 95/NT systems.

## Purchasing RGB Editor

RGB Editor for Windows 95/NT is a fully functioning program. It is **not** crippled in any way.

RGB Editor for Windows 95/NT is distributed as shareware. You may evaluate it free of charge for 30 days. After 30 days you are required to register it. If after evaluating RGB Editor for 30 days you decide not to register it you are required to remove it from your computer.

Registration entitles you to unlimited free updates and support via E-Mail or telephone.

You may also purchase RGB Editor for Windows 95/NT using your credit card via the Internet or by telephone.

## Desktop Locations

RGB Editor's location on the desktop is saved when the program is exited. Whenever you start RGB Editor it will reappear on the desktop where you last placed it. RGB Editor property sheet locations are also stored and reused the next time they are opened.

## Taskbar Tray

RGB Editor for Windows 95/NT can be optionally configured to place its program icon in the Taskbar Icon Notification Tray. This option provides a simple means of keeping the taskbar button region clear for other running programs.

# Installing RGB Editor

## Installation

To install RGB Editor for Windows 95/NT on your computer simply create a new, empty folder and place the files; RGB.EXE, RGB.HLP and RGB.CNT there.

<b>RGB.EXE</b>	- The RGB Editor Application
<b>RGB.HLP</b>	- The Windows 95/NT Help File
<b>RGB.CNT</b>	- The Help Contents File

If you installed RGB Editor for Windows 95/NT using the SETUP.EXE program and selected the default installation setting RGB Editor for Windows 95/NT will be installed in the **C:\Program Files\Software by Design** folder.

To integrate RGB Editor for Windows 95/NT with the MS Windows Explorer select the RGB Editor Explorer Setup property sheet while RGB Editor is running.

**Note** If you have an earlier version of RGB Editor for Windows 95/NT installed on your computer, simply replace the RGB.EXE, RGB.HLP and RGB.CNT files with the newer versions.

**Note** The RGB.INI file is no longer used and can be deleted. The various application settings specified in the RGB Editor Options property sheet as well as the main window's size and location on the desktop are now stored in the MS Windows 95/NT System Registry.

**Note** Some earlier versions of RGB Editor for Windows 95/NT included a RGB.WRI documentation file. This file has been replaced by the RGB.HLP file and can now be deleted.

**Warning** If you rename the RGB.EXE file you must also rename the HLP file using the same basename. For example if you change the RGB Editor application file name to NewName.exe, rename the help file to NewName.hlp. Do not rename the RGB.CNT file however. The HLP and CNT files *must* reside in the same folder as the RGB Editor application file itself.

# Configuring RGB Editor

## RGB Editor Options

Select the **File | Options** menu item to display the RGB Editor Options property sheet. This window will allow you to change the various RGB Editor program settings listed below.

## Launch Multiple Instances

Check this item to allow more than one instance of RGB Editor to be run on the desktop.

## Place Icon in Taskbar Tray

Check this item to display a small RGB Editor program icon in the Taskbar Icon Notification Tray. If this item is selected and the RGB Editor window is minimized a button will not be added to the Taskbar, to restore the RGB Editor window on the desktop press the small icon in the taskbar tray instead. This option is available to keep the taskbar free for other running programs.

**Note** When this option is selected, clicking on the Close box in the upper right-hand corner of the window title bar will minimize RGB Editor instead of closing the application. To quit RGB Editor right-click with your mouse on the RGB Editor icon in the Taskbar tray. You may also use the **File | Exit** menu command or the **Ctrl+Q** keyboard shortcut.

## Confirm Program Exit

Check this item to confirm quitting RGB Editor for Windows 95/NT. When this option is selected you will be prompted to confirm your intention to exit RGB Editor and return to the MS Explorer desktop. This item is useful if you run RGB Editor from the tray and wish to avoid accidental exits when you right-click on the RGB Editor tray icon.

## Select the Type of Macro to be Copied to Clipboard

Select the types of macro to be copied to the clipboard. This setting allow you to specify the text format for the RGB macro that is copied to the MS Windows Clipboard. This macro can then be copied into your program project source code or HTML file.

### RGB Macro

Select this type to copy the currently selected color definition in the **RGB (128,128,128)** format. This format is useful for Visual BASIC and some C Language source code files.

### Hexadecimal

Select this type to copy the currently selected color definition in the **0x00808080** format. This format is useful for Visual C and Assembly Language source code files.

### HTML Macro

Select this type to copy the currently selected color definition in the **"#808080"** format. This format is useful for most HTML file editors.

## Specify the Color Swatch Size for Clipboard Copies

The currently selected RGB color can be copied to the MS Windows Clipboard as a small rectangular bitmap suitable for pasting into a graphics editing utility. Use the setting described below to specify the size of the color swatch to be copied to the Clipboard.

### Width

Use this entry field to specify the width (in pixels) of the color swatch. The color swatch width can be between 8 and 256 pixels.

### Height

Use this entry field to specify the height (in pixels) of the color swatch. The color swatch height can be between 8 and 256 pixels.

## Camera Shutter Sound when Copying

Check this box to play an SLR camera shutter sound when copying RGB Macro or Color Swatches to the MS Windows Clipboard.

## Sounds with Warning Dialog Boxes

Check this box to play a short beep sound when RGB Editor displays a warning dialog box or an error occurs.

## OK

Press this button when you have completed your selection of RGB Editor program options. When you press this button the RGB Editor Options property sheet will be closed and your settings will be saved.

## Cancel

Press this button to close the RGB Editor Options property sheet without making any changes. If you have made any changes to the option settings, and then press this button your changes will not be used, and your previous settings will remain in use.

**Help**

Press this button to open the RGB Editor Help window and go directly to the Configuring RGB Editor topic.

**Note** The options you have selected will be saved when you press the **OK** button. The desktop location of the RGB Editor Options window itself will also be stored. Your settings will be saved in the MS Windows 95/NT System Registry.

# RGB Editor Explorer Setup

## **RGB Editor Explorer Setup**

Select the **Help | Setup** menu item to display the RGB Editor Setup property sheet. This window will allow you to integrate RGB Editor for Windows 95/NT with the Microsoft Windows 95/NT Explorer. Use this command to create and remove MS Explorer shortcuts.

## **Create a Start Menu Item**

Check this item to create a RGB Editor Start Menu entry. The RGB Editor for Windows 95/NT program will be located in the Software by Design folder on the Programs menu. This item will be disabled (grayed) if a RGB Editor item already exists in the Software by Design folder.

## **Remove this Start Menu Item**

Check this item to remove the RGB Editor entry located in the Software by Design folder on the Programs menu. This item will be disabled (grayed) if a RGB Editor item does not already exist in the Software by Design folder.

## **Create a Desktop Icon**

Check this item to create a RGB Editor for Windows 95/NT program icon on the Explorer desktop. This item will be disabled (grayed) if a RGB Editor desktop icon already exists.

## **Remove Icon from the Desktop**

Check this item to remove the RGB Editor for Windows 95/NT program icon from the Explorer desktop. This item will be disabled (grayed) if a RGB Editor desktop icon does not already exist.

## **Create a Startup Folder Item**

Check this item to automatically run RGB Editor for Windows 95/NT whenever Microsoft Windows is started. This option creates a RGB Editor program icon in the MS Windows Explorer Startup folder. This item will be disabled (grayed) if a RGB Editor startup item already exists in the Startup folder.

## **Remove the Startup Folder Item**

Check this item to remove RGB Editor from the MS Windows Explorer Startup folder. This item will be disabled (grayed) if a RGB Editor startup item does not already exist in the Startup folder.

## **OK**

Press this button when you have completed your selection of MS Explorer shortcuts. When you press this button the RGB Editor Setup property sheet will be closed and the MS Explorer shortcuts you have selected will be created or removed.

## **Cancel**

Press this button to close the RGB Editor Explorer Setup property sheet without creating or removing any MS Explorer shortcuts.

## **Help**

Press this button to open the RGB Editor Help window and go directly to the RGB Editor Explorer Setup topic.

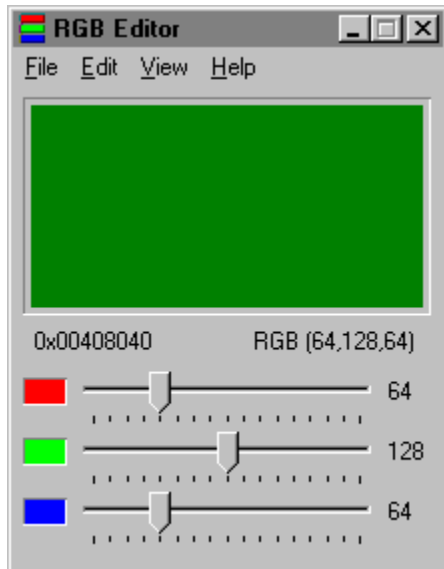
## Using RGB Editor

### Using the RGB Editor

The RGB Editor displays the currently selected color in the viewing region at the top of the main window. Three slider controls are provided directly beneath this region.

Use these slider controls to adjust the Red, Green and Blue components of the color you wish to create.

Each of the slider control values can be adjusted from between 0 and 255. As adjustments are made to these controls the resulting color combination will be automatically displayed directly above.



**Tip** Double-Click your mouse on the color region of the window to quickly open the standard MS Windows Color Editing dialog box.

# File Menu

## File Menu Commands

The File menu provides commands to configure the RGB Editor. A short description of each item follows:

### Options

Opens the [RGB Editor Options](#) property sheet and allows you to change RGB Editor program settings. Use this command to configure the RGB Editor program.

### Exit

Closes the RGB Editor program and returns control to the Explorer desktop. The **Ctrl+Q** shortcut can be used for this command.

**Tip** Commonly used File commands can be invoked using [shortcut keys](#).

# Edit Menu

## **Edit Menu Commands**

The Edit menu provides commands used to edit the contents of RGB Editor documents. A short description of each item follows:

### **Copy**

Copies the current color selection to the Clipboard as a programming text macro. The **Ctrl+C** shortcut can be used for this command.

### **Copy Swatch**

Copies the current color selection to the Clipboard as a small color swatch bitmap. The **Ctrl+S** shortcut can be used for this command.

### **Edit Colors**

Use this command to open the standard MS Windows Color Selection dialog box. The **Ctrl+E** shortcut can be used for this command.

**Tip** Commonly used Edit commands can be invoked using shortcut keys.



# View Menu

## **View Menu Commands**

The View menu provides commands used to change RGB Editor display options. These items provide a means of changing the RGB Editor window appearance. A short description of each item follows:

### **Minimize**

Minimizes the RGB Editor window to a button or icon on the taskbar. The **Ctrl+Y** shortcut can be used for this command.

### **Always on Top**

Use this command to keep the RGB Editor window top most on the desktop. When this item is checked the RGB Editor window will float above all other non-topmost windows on the desktop. This item is useful if you normally run RGB Editor with a small window that would be easily obscured by other applications. The **Ctrl+T** shortcut can be used for this command.

**Tip** Commonly used View commands can be invoked using shortcut keys.

# Help Menu

## Help Menu Commands

The Help menu provides commands used to get help with RGB Editor operations. A short description of each item follows:

### Contents

Opens the RGB Editor Help window and displays the Table of Contents. The **F1** shortcut can be used for this command.

### Search

Opens RGB Editor Help and displays the Search window. You can use this window to search for specific RGB Editor help topics.

### How to Use Help

Opens a Help window that explains how to use the MS Windows 95/NT Help program.

### Register

Displays the RGB Editor Shareware Registration Wizard. This wizard allows you to register RGB Editor for Windows 95/NT for authorized use.

### Setup

Displays the RGB Editor Explorer Setup property sheet. This window provides options to integrate RGB Editor with the MS Windows Explorer. Use this window to create MS Explorer Start Menu items and desktop icons.

### Web Site

Opens your web browser application and goes directly to the Software Design web site on the Internet.

### Send E-Mail to Author

Opens your Internet eMail client application and allows you to send an eMail message directly to the author at [Gregory\\_Braun@CompuServe.com](mailto:Gregory_Braun@CompuServe.com).

**Note** You must have your Internet eMail client software configured as your default Simple MAPI client for this command to work properly.

### About RGB Editor

Displays the RGB Editor splash box. This window contains program information, the current version of RGB Editor you are running and a program copyright notice. Click the mouse anywhere in this window to close it

**Tip** Commonly used Help commands can be invoked using shortcut keys.

# Shortcut Keys

## Shortcuts

Shortcut keys allow you to quickly invoke RGB Editor menu commands without first displaying the menu and then selecting an item from it. The most commonly used RGB Editor commands can be invoked using the following shortcut keys.

### File Menu

**Ctrl+Q** Exit RGB Editor, and return to the desktop

### Edit Menu

**Ctrl+C** Copy color macro to the Clipboard

**Ctrl+S** Copy color swatch to the Clipboard

**Ctrl+E** Open the MS Windows Color Editor

### View Menu

**Ctrl+Y** Minimize RGB Editor to a button or icon

**Ctrl+T** Make the RGB Editor window topmost

### Help Menu

**F1** Display this Help file

## Comments and Upgrades

### Comments and Suggestions

If you have comments, questions or find any bugs in RGB Editor for Windows 95/NT please feel free to contact me on CompuServe.

### Gregory Braun – Software Design

CompuServe: 71613,2175  
Email: Gregory\_Braun@CompuServe.com  
Web Site: <http://www.execpc.com/~sbd>  
Phone: 1.414.444.8497

### Web Site

Visit my web site on the Internet to download the latest versions of all of my [software offerings](http://www.execpc.com/~sbd).



### Software Design Web Site

(<http://www.execpc.com/~sbd>)

# Release History

## RGB Editor for Windows 95/NT Release History

- v2.0** Original in-house development and testing of MS Windows 95/NT conversion using the Microsoft Win32 SDK.
- v2.1** Added 95/NT splash box for release.
- v2.2** Added facility to edit colors by double-clicking the mouse directly in the color window.
- v2.3** Added option to place the program icon in the taskbar notification tray. Added an SLR Camera shutter sound option when copying to the MS Windows Clipboard
- v2.4** Added HTML color macro option and the Minimize item to the View menu.
- v2.5** Replace custom color controls with the standard MS Windows trackbar controls. Fixed HTML color triplet ordering bug.
- v2.6** Added support for screen color settings as specified in the Display Properties dialog box. Added default user and company name to the splash box.
- v2.7** Moved all RGB Editor options and settings to the MS Windows 95/NT System Registry. Added an MS Windows 95/NT Help file. Added an automatic Explorer Setup facility.
- v2.8** Converted the RGB Editor Options dialog box to a three-tab property sheet. Fixed a bug that prevented proper window repositioning when the MS Explorer Taskbar was placed along the left edge or at the top of the desktop and the Auto Hide option was active.
- v2.9** Fixed a bug that prevented proper text display when large systems fonts where used.
- v3.0** RGB Editor now behaves like a true Taskbar Tray application. Fixed several minor bugs.
- v3.1** Added support for MS Windows 98 systems. Fixed several minor bugs.
- v3.2** Fixed several minor bugs.
- v3.3** Fixed several minor bugs.

**Last Update** November 11th, 1998

### Web Site

Visit my web site on the Internet to download the latest versions of all of my [software offerings](http://www.execpc.com/~sbd).



**Software Design Web Site**

(<http://www.execpc.com/~sbd>)

# System Registry

## RGB Editor for Windows 95/NT System Registry Key

RGB Editor for Windows 95/NT stores configuration settings in the MS Windows 95/NT System Registry. These settings are updated automatically while RGB Editor is running. There is no need to edit these settings manually.

If you insist upon editing these settings, you do so at your own risk. RGB Editor automatically updates registry entries when it exits. If you edit these settings make sure RGB Editor is not running while you edit them. If RGB Editor is currently running your changes will be overwritten when RGB Editor exits.

RGB Editor for Windows 95/NT stores configuration settings in the following system registry key:

```
HKEY_CURRENT_USER
Software
  Software by Design
    RGB Editor for Windows 95/NT
      Section
        Label = Value
```

**Warning** There is no need to edit these settings manually. RGB Editor will automatically maintain these settings for you. If you do edit these, you do so at your own risk.

# Removing RGB Editor

## Removing RGB Editor for Windows 95/NT

If you find that RGB Editor for Windows 95/NT does not meet your needs you can remove it from your computer system by simply deleting the following files from your hard drive.

All of these files will be located in the folder that you originally installed RGB Editor in.

The default location for all RGB Editor for Windows 95/NT program files is the **C:\Program Files\Software by Design** folder. Unless you specified a different folder when you ran SETUP.EXE you will find the RGB Editor files here.

<b>rgb.exe</b>	RGB Editor for Windows 95/NT program.
<b>rgb.cnt</b>	RGB Editor Help Topics File
<b>rgb.hlp</b>	RGB Editor Help File

If you have opened and used the RGB Editor for Windows 95/NT Help files your system may contain the following two (2) files. These files are created by the standard MS Windows 95/NT Help program WinHlp32.exe. These files may also be safely removed.

<b>rgb.gid</b>	MS Windows Help settings file. This file contains the RGB Editor Help window size and desktop location as well as any bookmarks you may have created.
<b>rgb.fts</b>	MS Windows Help word database. This file is created when you build a custom word list for RGB Editor Help files. This file is used to search for words and phrases in the RGB Editor Help files.

RGB Editor for Windows 95/NT does not use any custom DLL files or system drivers. If you delete the files mentioned above from your system's hard drive you will have completely removed RGB Editor from your computer system.

**Note** If you have installed RGB Editor shortcuts on the MS Explorer Start Menu use the **Help | Setup** command to remove the shortcuts you created before you delete the RGB Editor files mentioned above.

# Software Design Web Site

## Software Design

You can download the latest versions of all of my software from my web site on the Internet. I post the latest releases of my software there first. Click your mouse on the link listed below to visit the Software Design web site.



## Software Design Web Site

(<http://www.execpc.com/~sbd>)

## Software Titles

The following software titles are available at my web site on the Internet and can also be found on CompuServe, ExecPC, MSN and ZD Net.

NoteBook for Windows	(NBOOK.ZIP)
NoteBook for Windows 95/NT	(NBOOK32.ZIP)
Reminders for Windows	(REMIND.ZIP)
Reminders for Windows 95/NT	(REMIND32.ZIP)
ToolBar for Windows	(TBAR.ZIP)
ToolBar for Windows 95/NT	(TBAR32.ZIP)
Screen Loupe for Windows	(LOUPE.ZIP)
Screen Loupe for Windows 95/NT	(LOUPE32.ZIP)
Screen Loupe for Macintosh	(LOUPE.SEA)
Audition for Windows 95/NT	(AUDITION.ZIP)
Password Keeper for Windows 95/NT	(PASSKEEP.ZIP)
CardBase for Windows 95/NT	(CARDBASE.ZIP)
Go Postal for Windows 95/NT	(GOPOSTAL.ZIP)
File Editor for Windows	(FXEDIT.ZIP)
File Editor for Windows 95/NT	(FXEDIT32.ZIP)
Crypto for Windows 95/NT	(CRYPTO.ZIP)
Icon Extractor for Windows	(ICONX.ZIP)
Icon Extractor for Windows 95/NT	(ICONX32.ZIP)
TxEit for Windows 95/NT	(TXEDIT.ZIP)
DLL Show for Windows 95	(DLLSHOW.ZIP)
RGB Editor for Windows	(RGB.ZIP)
RGB Editor for Windows 95/NT	(RGB32.ZIP)
Quiz Wizard for Windows 95/NT	(QUIZWIZ.ZIP)
FontShow for Windows 95/NT	(FONTSHOW.ZIP)
Submit It for Windows 95/NT	(SUBMITIT.ZIP)
File Shredder for Windows 95/NT	(SHREDDER.ZIP)
Programmer's IDE	(PMAN.ZIP)
Programmer's IDE 95/NT	(PMAN32.ZIP)
Touch for Windows	(WTOUCH.ZIP)
Disk CleanUp for Windows 95/NT	(CLEANUP.ZIP)
BattleStar for Windows	(BSTAR.ZIP)
BattleStar for Windows 95/NT	(BSTAR32.ZIP)
World Radio for Macintosh	(WRADIO.SEA)

**Note** The latest versions of my software programs are always posted on my web site first. Versions found on the other online services may be earlier releases.



# BBS and Internet Operators

## Webmasters

Please upload the original ZIP file intact and title the submission:

**"RGB Editor for Windows 95/NT v3.3"**

--Author Gregory Braun

## Web Site

Visit my web site on the Internet to download the latest versions of all of my [software offerings](#).



**Software Design Web Site**

(<http://www.execpc.com/~sbd>)

**Note** This site also supports anonymous FTP transfers.

## What is Shareware

### **The concept of "Shareware"...**

Shareware, also known as user supported software and other names, is a concept not understood by everyone. The author of Shareware retains all rights to the software under the copyright laws while still allowing free distribution. This gives the user the chance to freely obtain and try out software to see if it fits their needs. Shareware should not be confused with Public Domain software even though they are often obtained from the same sources.

If you continue to use Shareware after trying it out, you are expected to register your use with the author and pay a registration fee. What you get in return depends on the author, but may include a printed manual, free updates, telephone support, etc. Only by paying for the Shareware you use do you enable the Shareware author to continue to support his software and create new programs. Considering that the Shareware registration fees are almost always far less than the purchase price of comparable commercial software it's obvious that Shareware is a good deal for everyone.

There are real advantages to you in the Shareware system. You get to try out software to make sure it is compatible with your hardware and that it fits your needs before you "buy" it with your registration. The author saves the expense of advertising, packaging and distribution and passes the savings on to you. Plus, most Shareware authors are much more accessible than commercial software sources so that your questions and suggestions are much more likely to be responded to.

*Thank you for your support.*

## Registering RGB Editor for Windows 95/NT

### Registering RGB Editor

RGB Editor for Windows 95/NT is distributed as shareware. You may evaluate it free of charge for 30 days. After 30 days you are required to register it. If after evaluating RGB Editor for 30 days you decide not to register it you are required to remove it from your computer.

Registration entitles you to unlimited free updates and telephone support.

You can register RGB Editor for Windows 95/NT by mailing the Order Form provided with this software. When you register RGB Editor for Windows 95/NT you will receive your registration code by E-Mail, or optionally you may request that your registration code be mailed to you.

You may also purchase RGB Editor for Windows 95/NT using your credit card via the Internet or by telephone.

The software you are currently using is a fully functioning program. As a registered user you will however be able to disable the initial splash box that appears when RGB Editor for Windows 95/NT is first launched.

To register your copy of RGB Editor for Windows 95/NT select the **Help | Register** menu command. The Shareware Registration Wizard will be displayed when this menu command is selected. Use this window to fill in the following entry fields:

### User Name

Enter the user name you originally specified when you ordered RGB Editor for Windows 95/NT.

### Organization

Enter the name of your organization as originally specified when you ordered RGB Editor for Windows 95/NT. If you did not specify an organization name leave this field blank.

### Registration

Enter the registration code that was provided to you. Enter your registration code exactly as provided. Do not include spaces when entering your registration code.

**Note** The registration code was provided to you when you purchased RGB Editor for Windows 95/NT. Refer to the notification letter that was mailed to you or the E-Mail message you received for your personal shareware registration code.

### Show Splash Box at Startup

This box will be initially checked if you have not registered RGB Editor for Windows 95/NT. When you successfully register your copy of RGB Editor this box will automatically be unchecked for you. If you wish to see the splash box when RGB Editor is launched return to this Registration Wizard and check this box.

### **OK**

Press this button after you have filled out the Shareware Registration Wizard to complete RGB Editor for Windows 95/NT shareware registration.

### **Cancel**

Press this button to close the Shareware Registration Wizard without making any changes.

### **Help**

Press this button to open the RGB Editor Help window and go directly to the Registering RGB Editor topic.

# Purchasing Information

## Purchasing Information

RGB Editor for Windows 95/NT is distributed as shareware. You may evaluate it free of charge for 30 days. After 30 days you are required to register it. If after evaluating RGB Editor for 30 days you decide not to purchase it you are required to remove it from your computer.

Registration entitles you to unlimited free updates and telephone support.

You can register RGB Editor for Windows 95/NT by mailing the Order Form provided with this software. When you register RGB Editor for Windows 95/NT you will receive your registration code by E-Mail, or optionally you may request that your registration code be mailed to you.

You may also purchase RGB Editor for Windows 95/NT using your credit card via the Internet or by telephone.

The software you are currently using is a fully functioning program. As a registered user you will however be able to disable the initial splash box that appears when RGB Editor for Windows 95/NT is first launched.

## Single User Licensing

Individual users can register RGB Editor for Windows 95/NT for \$20.00 dollars. If you would also like a 3 ½" floppy disk sent to you please add an additional \$5.00 dollars. Registration entitles you to unlimited free updates and telephone support. You can always download the latest release of RGB Editor directly from the Software Design web site on the Internet. Print the RGB Editor for Windows 95/NT Order Form and mail it with your check to become a registered user of RGB Editor for Windows 95/NT.

## Site Licensing

RGB Editor for Windows 95/NT can also be registered for use at an entire site for \$250.00 dollars. If you would like to install and use RGB Editor on multiple workstations at a single location choose this type of licensing. Registration includes a 3 ½" floppy disk and entitles you to unlimited free updates and telephone support. You can always download the latest release of RGB Editor directly from the Software Design web site on the Internet. Print the RGB Editor for Windows 95/NT Order Form and mail it with your check to become a registered user of RGB Editor for Windows 95/NT.

## Corporate Licensing

RGB Editor for Windows 95/NT can also be registered for use at multiple sites for \$1000.00 dollars. If you would like to install and use RGB Editor on multiple workstations at multiple locations choose this type of licensing. Registration includes a 3 ½" floppy disk and entitles you to unlimited free updates and telephone support. You can always download the latest release of RGB Editor directly from the Software Design web site on the Internet. Print the RGB Editor for Windows 95/NT Order Form and mail it with your check to become a registered user of RGB Editor for Windows 95/NT.

## RGB Editor for Windows 95/NT Order Form

To print this order form, press the **Print** button above, or select **Print Topic** from the **File** pull-down menu.

Secure on-line credit card orders can be placed from the Software Design web site.

To order by check, send this order form and a check to:

**Gregory Braun**  
**P.O. Box 1307**  
**Milwaukee, WI 53201-1307 U.S.A.**

Payments must be in US dollars drawn on a US bank, or you can send international postal orders in US dollars.

All orders are subject to the License Agreement.

Customer information is considered confidential and will not be shared or distributed to any third parties.

Registered users of RGB Editor for Windows 95/NT are entitled to unlimited free program updates.

Single User Copy      \_\_\_\_\_ at      \$20.00      each =      \_\_\_\_\_

Optional 3 ½" Disk      \_\_\_\_\_ at      \$5.00      each =      \_\_\_\_\_  
Site License      \_\_\_\_\_ at      \$250.00      each =      \_\_\_\_\_

*Includes 3 ½" Disk*  
Corporate License      \_\_\_\_\_ at      \$1000.00      each =      \_\_\_\_\_

*Includes 3 ½" Disk*

Wisconsin Residents add 5.5% sales tax:      \_\_\_\_\_

**Total Payment:**      \_\_\_\_\_

Date      \_\_\_\_\_

Name      \_\_\_\_\_

Organization      \_\_\_\_\_

Shipping Address      \_\_\_\_\_  
\_\_\_\_\_

City      \_\_\_\_\_

State      \_\_\_\_\_

Zip Code      \_\_\_\_\_

Country      \_\_\_\_\_

Day Phone      \_\_\_\_\_

E-Mail Address      \_\_\_\_\_

☐ Please send registration code via E-Mail

Comments:

## Credit Card Purchases

### Credit Card Purchases

You may purchase RGB Editor for Windows 95/NT by credit card over the telephone or directly from my web site on the Internet.

### On-line Registration

Secure on-line registration using a major credit card is available directly from the Software Design web site. Simply go to the RGB Editor for Windows 95/NT program description page and click your mouse on the **RegNet** link. You may register RGB Editor for Windows 95/NT using your Master Card, Visa, American Express, Discover or EuroCard. Registration keys will be sent to you via eMail.

### Telephone Registration

You may also purchase RGB Editor for Windows 95/NT toll-free by telephone. Please specify RGB Editor for Windows 95/NT when ordering.

Toll-Free:	<b>1.800.999.2734</b>
International:	<b>1.805.288.1827</b>
FAX Line:	<b>1.805.288.1867</b>

### Web Site

Click your mouse on the underlined link below to purchase RGB Editor for Windows 95/NT by credit card.



**Software Design Web Site**

(<http://www.execpc.com/~sbd>)

# License Agreement

## License Agreement

You should carefully read the following terms and conditions before using this software. Unless you have a different license agreement signed by Gregory Braun, your use of this software indicates your acceptance of this license agreement and warranty.

## Registered Version

One registered copy of RGB Editor for Windows 95/NT may either be used by a single person who uses the software personally on one or more computers, or installed on a single workstation used nonsimultaneously by multiple people, but not both.

## Site License

Any number of users at a single location may access the registered version of RGB Editor for Windows 95/NT through a network, provided that you have obtained a site license for the software covering all workstations that will access the software through the network. Any number of users at a single location can install and use the software on one or more computers or workstations.

## Corporate License

Any number of users at any number of locations may access the registered version of RGB Editor for Windows 95/NT through a network, provided that you have obtained a corporate license for the software covering all workstations that will access the software through the network. Any number of users at any number of locations can install and use the software on one or more computers or workstations.

## Software Updates

Registered users of RGB Editor for Windows 95/NT are entitled to unlimited free program updates. Software updates can be downloaded directly from the Software Design web site on the Internet.

## Governing Law

This agreement shall be governed by the laws of the State of Wisconsin.

## Disclaimer of Warranty

THIS SOFTWARE AND THE ACCOMPANYING FILES ARE SOLD "AS IS" AND WITHOUT WARRANTIES AS TO PERFORMANCE OR MERCHANTABILITY OR ANY OTHER WARRANTIES WHETHER EXPRESSED OR IMPLIED. NO WARRANTY OF FITNESS FOR A PARTICULAR PURPOSE IS OFFERED.

Good data processing procedure dictates that any program be thoroughly tested with non-critical data before relying on it. The user must assume the entire risk of using the program. ANY LIABILITY OF THE SELLER WILL BE LIMITED EXCLUSIVELY TO PRODUCT REPLACEMENT OR REFUND OF PURCHASE PRICE.

# Customizing Help

## Customizing Help

You can customize this help file to better suit your needs and uses. The following topics describe the various settings that can be configured. The settings you specify will be saved and used again each time you view this help file.

### Font Size

The size of the font used in this help file can be made larger or smaller by selecting the **Font** item from the **Options** menu above. Select **Small**, **Normal** or **Large** fonts from the popup menu. The font size you select will be saved and used again each time you view this help file.

### Window Size

The size of this Help window and its location on the desktop can be adjusted using the standard Windows resizing and placement methods. The window size and its location on the desktop will be saved and used again each time you view this help file.

### Window Background Color

The background color for this help window can be changed to white if you prefer. To change the background color to white select the **Use System Colors** item from the **Options** menu above. For the color changes to take effect you will have to close and then reopen the Help file. You will be prompted to confirm this action. Your background color selection will be saved and used again each time you view this help file.

### Window Placement

By default this help window positions itself in front of all other open windows. If you would prefer to have it covered up by other active windows select the **Keep Help on Top** item from the **Options** menu and then select **Not on Top** from the popup menu. Your selection will be saved and used again each time you view this help file.





