

Welcome to the Resource-Grabber!

Grab graphical and sound resources from other programs !

The Resource-Grabber will scan the directories and drives on your computer and extract all Bitmaps, Glyphs (button images), Icons, Cursors, JPG/JPEG images, WAVE and RMI sound files as well as AVI video clips it finds inside the programs and DLL files in any directory of your choice.

Forget painting all that stuff by yourself; forget hours of searching for Windows-compatible button layouts ... simply use the images that are already on your computer ! The Resource-Grabber will extract thousands of them for you from their "hidden" locations inside DLL and EXE files at enormous speed and gives you full access by saving them as regular image/sound/video files for you.

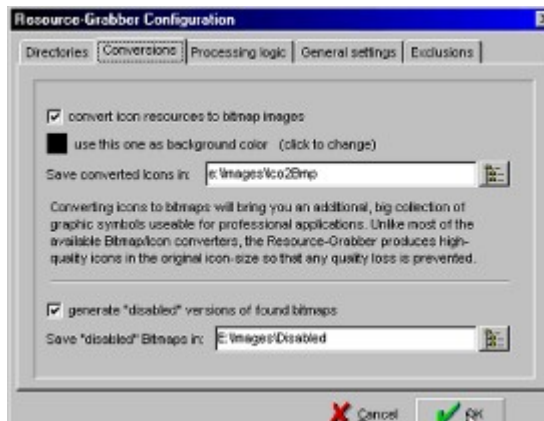
This program is highly popular amongst developers because it saves so many hours - just try it out by yourself!

Program configuration screens



The first configuration tab of the program lets you configure the directories in which found images, sounds etc. will be saved. You might think this makes it more complicated than necessary, but keep in mind that the Resource-Grabber will retrieve thousands of images for you - if they are at least separated by file-type, this helps a lot to keep control over "what to find where". Other reasons are the special features of Resource-Grabber: it allows to check for duplicate filenames and other things which make only sense if the retrieved files are separated into different directories. Each type of "resource" will just be retrieved and saved if its related option is checked - in this case the configured directory will be used for storage.

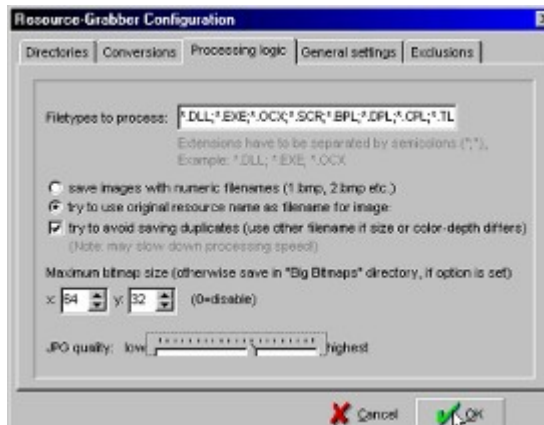
The "Run global searches in:" prompt may be filled either by one drivename (such as `C:\`), or even a list of drivenames and/or directories as shown in our example above (`C:\ ; D:\ ; E:\BIN ; F:\ ;`). Each entry has to be separated by an ampersand sign `< ; >` from each other - the Resource-Grabber will evaluate this list and scan all those directories and drives when you start its "Global search" mode.



The "Conversions" tab in the Configuration window lets you configure several options concerning the file format conversion features of the program. If your main interest is, for example, to gain as many button images ("Glyphs") as possible, you could check the appropriate option in this tab and the Resource-Grabber will use some special logic to convert all icons it finds to button symbols of the best possible quality. The resulting files should be separated into a special directory so that they won't overwrite other files which were original bitmaps of maybe the same name.

To produce optimal quality for your specific programs, you may even configure the background color the Resource-Grabber uses for its calculations of the resulting bitmap image.

The bottom of this tab offers another additional option which will allow you to create "disabled" looking versions of the found graphic images. This is especially helpful if some of your favourite images don't look good when they are displayed on disabled forms or programs in disabled state. This option requires that you use a separate directory since the program will try to create a "disabled" version *of the same name* for each original graphic image it finds.



The "Processing Logic Configuration" screen allows you to fine-tune Resource-Grabbers processing options. Here you can configure which types of files the program should scan for resources (as in Tab #1, please separate each extension by semicolons < ; > and use DOS-compatible definitions (such as "*.DLL;*.EXE;*.OCX", not just "DLL;EXE;OCX").

The type of filenames the Resource-Grabber should use depends on you: either each file will receive a numeric filename or it will receive a filename based on the name the "Resource" has inside the file of which Resource-Grabber extracted it.

Especially the second method should just be used with the "avoid saving duplicates" option - the Resource-Grabber will then check if a graphic already exists before actually saving it and - if so - it will increment the filename by attaching a number to it. Thus, you will be able to retrieve the optimal number of images and sounds (of course, the Resource-Grabber will try its best to detect if 2 images are really the same - this is checked based on the size and color-depth of both compared images).

Note that enabling this option costs its time - especially when retrieving huge drive volumes you might notice a slowdown of your computer and/or it might seem as the program has locked up (while it is in fact just searching for "free" filenames) ... However, the option pays since the results are much better and you can avoid most redundancy in your image collection.

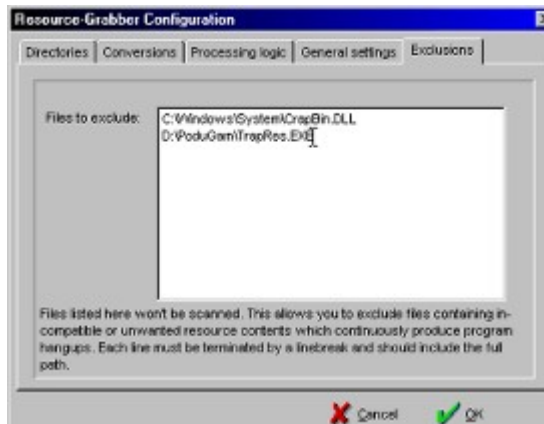
Defining a maximum size of the retrieved bitmap images (this option would not make sense for other graphic types, for bitmaps - which are often button symbols - it can be important!) will give you better control over which type of bitmap/button symbol graphics are retrieved. You could, for example, let the program just retrieve bitmaps of 32x32 format (or 32x64 to allow reading bitmaps consisting of an enabled and a disabled version of the image) - which will result in a great, ready-to-use bitmap symbol collection. All other bitmaps will be stored in your configured "Big Bitmaps" directory (if this option in the first configuration tab is activated).

A value of 0 will disable checking the horizontal and/or vertical size of the bitmap image.



The "General Settings" tab gives you additional options - mainly for the overall look and feel as well as some additional options for debugging or other purposes. All options should be self-explanatory, just let me tell you about the following ones:

The "Try to detect multi-glyphs" option has enormous power - more than its placement on this "lower priority" tab suggests ...



Finally, the last window allows you to set up a list of filenames which should be excluded from scanning. This list is just prepared for *files*, *not directories*, since experience shows that there may exist files which have become damaged or whatelse - but they should not stop your Resource-Grabber! In fact you shouldn't ever require to make use of this exclusion list option, but it's here in case you need it.

Tips

Here are some usage tips for optimal results with the Resource-Grabber:

If you feel the need for speed:

- scan just individual directories, don't use the "Global search" option
- let the Resource-Grabber just save the type of files you really need
- uncheck the image conversion options, if you don't need them - this saves processor time..
- use the "use original name" option (fastest) or the one for numeric filenames, but avoid using the "avoid saving duplicates" option which can slow down the scanning process enormously, especially on large drive volumes
- uncheck the bitmap option or set both values for the "maximum bitmap size" to 0.
- disable the "detect multi-glyphs" option (however, it might cost you time if you had to split them "by hand" after the scan, so this is not an easy decision - finally it depends on what you need)

If you want to create a huge, high-quality collection:

- get the registered version! The demo version just gives you 10-15 images per directory, even if you run it 1000 times, just the unrestricted registered version is a real hour-saver.
- enter all available disk drives in the "global searches in.." prompt (in the format C:\;D:\;E:\;F:\;..)
- make use of the "convert icons to bitmaps" option - on typical harddisks, this should give you *thousands* of quite nice-looking symbols more than without this option
- be sure to check the "avoid to save duplicates" option
- the "maximum sizes" doesn't matter: all bitmaps will be saved, either to the regular bitmaps directory or to the "Big Bitmaps" directory
- be sure to check the "detect multi-glyphs" option
- do additional runs on the tons of CD-ROMs disks you have in your boxes at your lofts .. :-)

Running the Resource-Grabber

Operation modes

Currently, you can run the Resource-Grabber in 3 various modes. Each option is selectable from both, the Program's main menu and the speedbutton on your toolbar.

Scanning the configured directories / drives

This option will do a search on all directories and/or drives you have configured in the first configuration screen of Resource-Grabber. This is the most suggested method, since it can even scan your complete harddisk(s) in a single run. If you have large harddisks, you could go to meal - when you are finished, thousands of high-quality images will be ready for use.

Scanning an individual drive/directory structure

Often you might find special applications, diskettes or CDROM directories of interest for your image collection - then this option should be the appropriate for you. It allows you to select a single directory or drive and will scan it for you. No further interaction is required and you will be able to avoid long runs since you can fine-tune the source for the scanning procedure.

Scanning an individual file

You tried an application and found this wonderful icon in it? You found a great picture displayed in a program demo and are sure it might be of use for you (and no copyright will be violated..) ? - Great that you have this feature! It's just a few seconds, and the file will be scanned (to be sure, you could also use the option mentioned above to touch all files in the program's directory).

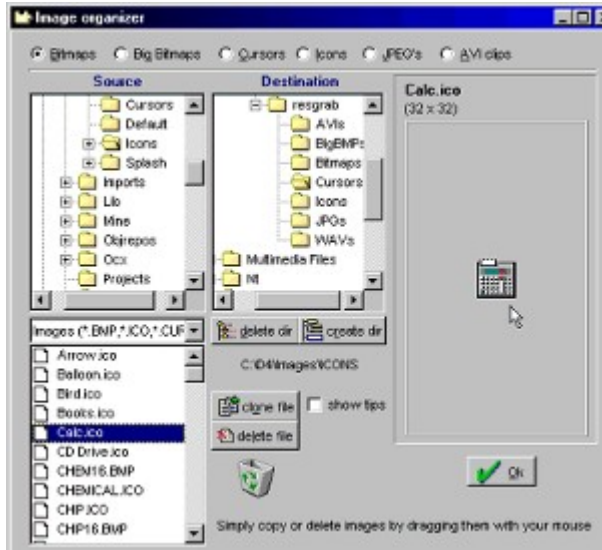
Finished!

When finished, the Resource-Grabber will display some statistic data about the scanning process.



Skipped images (due to whatever reason) will not be included in the total sum displayed, and all converted images will only be counted once, so you'll really see the "true" sum of extracted images.

Screen layout



Tips

The menus

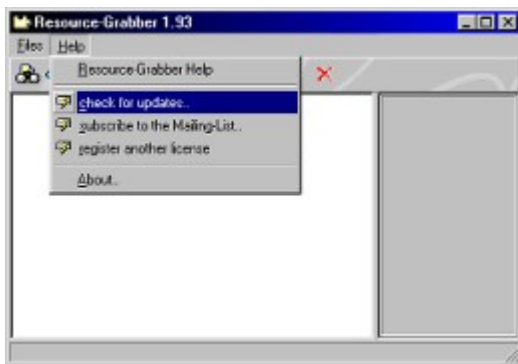
The menus



The main menu of the Resource-Grabber shows 3 options you can choose of:

- **Global Search** (in configured directories) - this one is the suggested method to retrieve a maximum of files within the shortest amount of time: it will scan all drives and/or directories you have defined in the program configuration ... even all directories of a list of haddisks can be scanned and searched for resources in one single run! Just configure the program to cover all disks, run this option and wait - on a typical computer, this should bring you 2000-10000 images (or even more!).
- **Scan Single Directory** which will scan an individual, single directory structure for resources (optionally with or without inclusion of subdirectories). This is the suggested method if you want to save time or if you just want to search a directory you have special interest in.
- **Scan Single File** - this option will scan a single, selected file for resources. This is the suggested method if you like some images, icons or what else in a specific program and want to check if they can be extracted.

Furthermore, the main menu lets you open the **Image Organizer**, which will help you to organize you the files you have retrieved in previous sessions, the **Program Configuration** options where you can configure Resource-Grabber's settings to perfectly meet your needs and finally the **Quit** option which will terminate the program.



Amongst other things, the Help menu of the Resource-Grabber includes options to check for available updates of the program (updates are still FREE!), offers an option to subscribe to the Resource-Grabber mailing list (which will keep you informed about latest releases and other issues related to the program).

Benefits of Registration

Registration shows respect for the love and labor shareware authors put into their wares.

Please keep me going - honor the licensing agreements and register the Resource-Grabber if it is valuable to you!

*Last, but not least, you will have a long list of **really useful benefits** if you decide to spend the few bucks - check it out:*

Advantages of registering:

- lets you use the "detect multi-glyph" images feature which should bring you 20-40% more images on a single run!
- lets you to use the "Scan Single File" option - great for fastest checks of apps you like
- lets you to use the "Scan Single Directory" option - great for fastest processing your favourite apps directories
- allows you to force the Resource-Grabber automatically cleanup the output directories before each new run
- allows you to save multi-resolution icons
- enables Resource-Grabber's "generate disabled bitmap images" option!
- lets you disable the copyright warning
- lets you use the "Exclude files from scanning" feature
- lets you automatically convert icons to 3D "button-like" bitmap images
- allows you to activate enhanced logics to prevent saving duplicates
- allows you to fine-tune the quality of extracted JPG/JPEG image files
- allows you to convert extracted icons to bitmaps (which is great for developers searching for button glyph images since it will bring them hundreds or thousands of button images more at each run)
- you will get access to a full-featured manual document (.rtf format) of this helpfile, ready and pre-formatted for being printed!
- you don't need to pay for the next upgrades - in fact, you can enjoy my Free Upgrade Policy!

How much does a registration cost?

Single license \$ 19,- only (= DM 29,- = SFR 25,- = ATS 190,-)

Important: *you need **additional licenses** if you plan to use the Resource-Grabber on more than one Computer.*

Multiple licences allow an institution, company or school to install the program on multiple computers or on a server. It must be guaranteed that the program does not run on more machines at the same time than there are licences purchased. All licences are issued to the same (company) name, which appears in the program's "About" window. Each additional licence also allows a single user to use the program at home. If you need more than 5 additional licenses, please contact me for a special discount.

Please read "[How to Register](#)" for information about the easiest and fastest way for registration.

If you like, you can have a registered version of the Resource-Grabber within a few hours! Check out the [list of registration methods](#). If you register online, you should receive your registered version (with all the advantages listed above) within 1 or 2 days - often it's possible within a few hours!

How To Register

There are several ways for you to register.

If your preferred way of registering isn't listed here, please send me an e-mail - I'm sure we'll find a way!

- **by REGULAR MAIL:** send your registration fee by regular mail to Richard Fellner, Pazmanitengasse 24, 1020 Vienna, Austria, Europe (this is **my preferred method** since I will receive the full fee without discounts. Because of that, I can offer you an **additional discount of \$3.00** if you are registering by using this method!) Don't worry about sending cash in the mail, just fold it into a sheet of paper so that you can't see the money through the envelope). *Please see the list below for information about additional costs when requesting disks !*
- **ONLINE** using the following Internet pages:
https://www.regsoft.com/cgi-bin/reg_it_offsite.pl?7453
*Note: this link is for **secure transactions** and offer 64/128-bit encryption (highest security).* If your browser doesn't support secure connections, please *just replace "https" by "http"* and you'll be connected to the standard registration form. If you have any other problems loading the pages, please let me know.
- **by PHONE** - by calling the US Number 1-877-REGSOFT (international orders please call 770-497-9126). Don't forget to tell the program ID, #7453.
- **by CHECK** - just fill in the ONLINE registration form, print it out and mail it along with a check in US Dollars to: Regsoft.com, 6595-G Roswell Road, Suite 732, Atlanta, GA 30328, USA.
- **by FAX** - just fill in the ONLINE registration form, print it out and FAX it to the US number 770-497-9234.
- **by EMAIL** - email all information of the ONLINE form to Info@Regsoft.Com

IMPORTANT: please don't forget to add the following amount to your registration fee:

- \$6.00 if you need the software on a floppy disk by regular mail
- you may *deduct* \$3.00 if you send your registration fee by regular mail (I'm passing my registration service savings to you!)

None of these additional fees are for me - they are just to cover my expenses the bank or post office will charge. Please understand that **I can't send you a registered version** if you don't add these few bucks.

Last, but not least: ***please double-check the e-mail address you write on the registration form.*** Previously, I received many invalid email addresses and could not return the registered versions. If you haven't received your registration information within 5 days after registering, please contact me.

Support and Updates

Support

only available to registered users. Please understand that due to the volume of mail I receive, I cannot offer support to unregistered users.

Upgrade policy

You can expect **FREE upgrades** and new versions as long as it covers at least a bit of my time and nerve expense. During the past this resulted in the fact that you could *download 5-10 updates without investing another single dollar!!* (imagine that of the "big guys" in software business =:-) ..

History

v1.0 As no tool like this one was around, I decided to do the work and create one for all of us programmers to allow use spending our time and nerves to more useful things than searching or even PAINTING button images and things like that by ourselves.

v1.1 now also extracts embedded

- icon images and
- cursor images !

v1.2 - allows to fine-tune JPEG/JPG quality

- optional dupe-check added

v1.3 adds option to automatically split images to button glyphs

v1.4 now also extracts embedded

- JPEG/JPG images !
- AVI video clips !

v1.41 reduced executable size and improved scanning speed

v1.42 fixes an ugly resource leak which led to computer lockups when scanning large disks or directories

v1.50 - fixes a problem which resulted in not displayed images after scanning

- now also capable to extract WAVE sound files!

v1.60 - 5 other filetypes supported for extraction (OCX,SCR,...)

This should give you another 200-400 images on a typical harddisk!

- fixes bug in filename incrementation
- fixes AV after scanning large harddisks
- fixes scanning bug ("forgot" to scan some directories under certain circumstances)
- improved speed a bit. Please note that the program can slow down your computer when scanning large drives. It's suggested that you let it run as a single task only.

v1.70 - supports online Update check (if you are connected to the Internet, Resource-Grabber will automatically check if a newer version has been released this day).

A Proxy can also be used for this check, just add the Line WebProxy=.. to the [Config] section of ResGrabr.ini.

Example: WebProxy=proxy.xpoint.at

- allows definition of files to be excluded from processing
- fixes program hangup at specific types of resource names
- various other fixes and improvements
- v1.70b fixes an error when running the program under NT

v1.70d- reads JPEG pictures again (this feature was somehow "lost" in version 1.70, sorry for that).

v1.8x - fixes a bug in the configuration window and the Image organizer

- allows to convert icons (contained in resources) to bitmaps. This will produce bitmaps in original icon size - in most cases useable for button or toolbar symbols/glyphs!
- now correctly extracts icons which resulted in a filesize of 0 before
- allows direct playing of WAV files from the list browser in the main window
- removed automatic update check due to request of some registered users. You can still do online update checks by clicking the "Check for new version" button in the "About" box of the program.
- Image Organizer improved

v1.9x - allows to scan multiple drives at one run ("global search")

- allows to scan individual files
- allows to scan individual directories
- many other improvements to ease your operation
- find new options in the "Help" menu
- v1.90a fixes an AV when deleting files in the Image Organizer
- now brings you optimal bitmap quality at Icon->Bmp conversions, regardless on resolution and color-depth of the icon.
- supports optional creation of a 3D-like border for converted icons to give them a button-like look
- now correctly supports extraction of cursors
- supports optional extraction of multi-resolution icons

Known problems, potential traps etc.

none yet.

License

Copyright : 1997-99 by Richard Fellner. All Rights Reserved.
Windows, Windows 95, Windows 98 and Windows NT are trademarks copyrighted by Microsoft Corporation, Redmond, USA.

END-USER LICENSE AGREEMENT FOR RICHARD FELLNER SOFTWARE / RESOURCE-GRABBER

1. Evaluation and Registration

This is not free software. You are hereby licensed to use this software for evaluation purposes without charge for a period of 21 days. If you use this software after the 21 day evaluation period the registration fee mentioned in the "Benefits and costs" section of this helpfile is required.

Unregistered use of the SOFTWARE PRODUCT after the 21-day evaluation period is in violation of international copyright laws.

2. Distribution

Provided that you verify that you are distributing the Shareware Version (select the "About" tab to check) you are hereby licensed to make as many copies of the Shareware version of this software and documentation as you wish; give exact copies of the original Shareware version to anyone; and distribute the Shareware version of the software and documentation in its unmodified form via electronic means. There is no charge for any of the above, Richard Fellner just wants to receive a short mail informing about it which helps him to maintain the last versions around. Alternatively, you could also send Richard Fellner a reference CD, the URL of your website (when you link to the SOFTWARE PRODUCT) or a copy of the article about the SOFTWARE PRODUCT for reference purposes.

3. Responsibilities

You acknowledge that the SOFTWARE PRODUCT is provided "as is" and "with all faults, defects and errors" and that all use of the Program is at your own full risk. Graphical images, sounds and other "resources" extracted by the SOFTWARE PRODUCT may be or contain copyrighted material. The author refuses any form of responsibility for further use of this material by the user of the SOFTWARE PRODUCT or other people the user of the SOFTWARE PRODUCT gives access to these images, sounds and other "resources".

[END OF LICENSE.TXT]

Thanks...

A big THANKS

to all those who helped me, contributed to the program and/or suggested improvements along the way, especially to:

- Robert A. Stanton
- Matthias Carstens
- Jan Peter Stotz



This program was created with Borland Delphi.

Thanks to this great development tool I could concentrate on the program's functionality, rather than problems on the programming environment...

This help file was designed with *Help & Manual*,

the great Help Authoring tool by Alexander Halser. Get it from his website at <http://www.easycash.co.at> .

Awards and Rankings

The Resource-Grabber has achieved the following awards and ratings (excerpt):



If you find something that is not listed here, please let me know! I'm also interested if you find magazine articles or website reviews of the program.

Contact information

The latest version of the Resource-grabber can be found at the download page :
<http://Inner-Smile.com>

Please forward any comments or suggestions to Richard Fellner at:

email: support@Inner-Smile.com

mail: Richard Fellner

Pazmanitengasse 24 / 9

1020 Wien (Austria)

Delphi Programmers are invited to visit my Website, the "DELPHI-BOX".



