

AutoShrink

[Introduction](#)

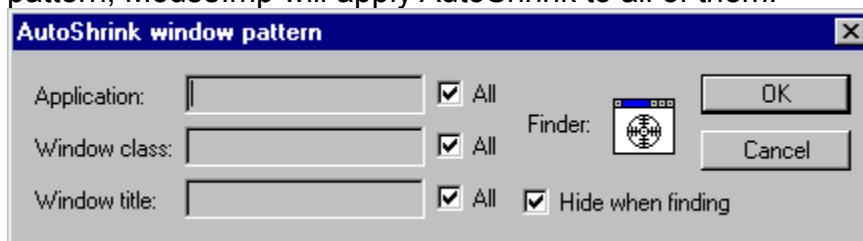
[Quick start for use AutoShrink](#)

[Known applications](#)

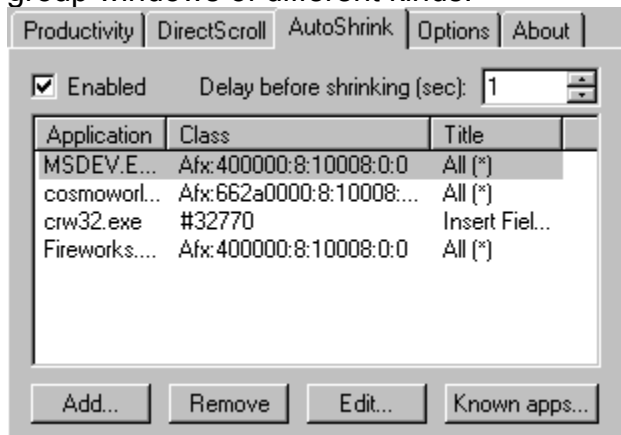
Mouselmp keeps tracking of windows AutoShrink is supposed to control and shrinks them when they are unused, as well as it shows them when it is required. Three parameters are required to let AutoShrink know which windows to control. These parameters form so-called window pattern:

1. *Application Name*. Name of application's executable module selected window belongs to. For example, msdev.exe for Microsoft developer studio or fireworks.exe for Macromedia Fireworks.
2. *Class Name*. So-called window class name, used internally by Windows. Each window is based on a set of properties known to operating system as window class. Windows based on the same class usually behave similarly.
3. *Window Title*. It usually contains text visible in window's caption area.

You don't have to enter window pattern manually; instead, you use Finder to locate windows and "read" their patterns. If more than one window is based on the same pattern, Mouselmp will apply AutoShrink to all of them.



There is also a possibility of using "masks" to specify window patterns. "All" flag can replace any of the three parameters listed above. This allows to skip checking some (or all) of the parameters when Mouselmp is looking for windows to be shrunk, and thus, to group windows of different kinds.



Enabled

Enable or disable AutoShrink feature of Mouselmp.

Window Patterns

Lists patterns Mouselmp uses to AutoShrink windows.

Add

Click to specify new pattern.

Remove

Click to remove selected pattern.

Edit

Allows to modify listed patterns.

Delay before shrinking

Enter number of seconds AutoShrink should wait before shrinking a window.

Known apps

Click to use pattern from "known application's"

AutoShrink quick start

[Introduction](#)

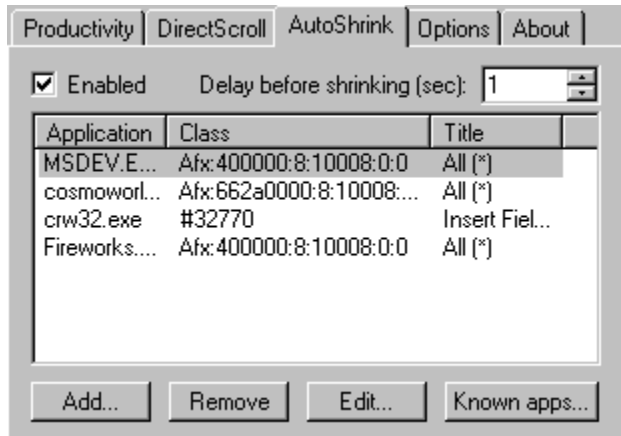
[AutoShrink](#)

To use AutoShrink, perform a few simple steps:

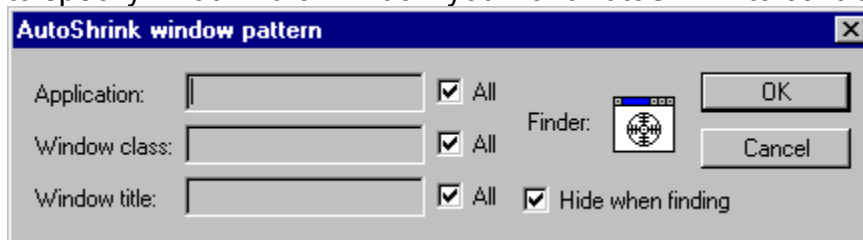
1. Double-click MouseImp icon in system tray (next to the clock) to open MouseImp Control window.



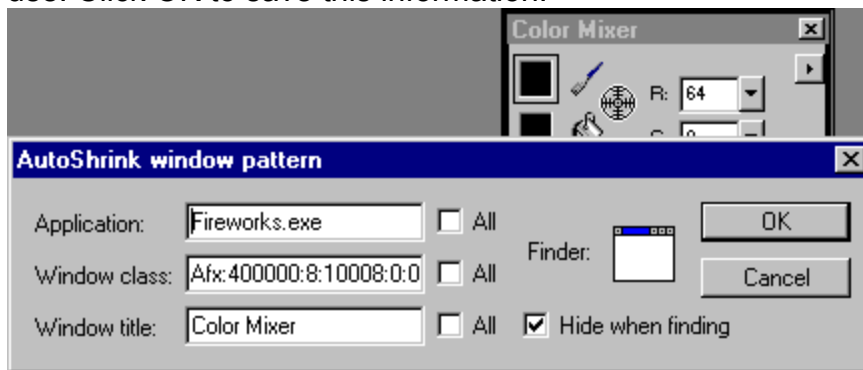
2. Select AutoShrink tab.



3. Click Add... button. This brings up AutoShrink Window Pattern dialog that allows you to specify what kind of window you want AutoShrink to control.



4. Click and drag the Finder's pointer. Note that if Hide when finding check box is checked, MouseAmp Control window will be hidden to show more screen space. Move the pointer over windows on your screen to select window you want to be hidden by AutoShrink. Blinking border around selected window will help you to identify it. When window is found, release the pointer. MouseImp will memorize its information for further use. Click OK to save this information.



Tip: AutoShrink controls all windows of similar kinds. To AutoShrink all toolbars of an

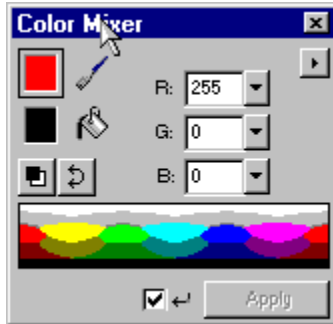
application, use Finder to select one of them. It is likely that other toolbars of the same application appear as the same "kind" to Windows, and if so, AutoShrink will operate on all of them. Simple checks "All" option near "Window Title".

5. Click OK to close MouseImp Control window.

Window you just added will be "shrunk" until you point to its caption that always remains on your screen. It will be restored as soon as you move mouse pointer over the caption.



It will be restored as soon as you move mouse pointer over the caption.



See [AutoShrink](#) for more information.

Contact

[Introduction](#)

[Licence](#)

Thank you for using MouseImp.

We hope you liked this little proggy.

If you have questions or suggestions, please mail to support@tv4studios.com

Your opinion is important for us!

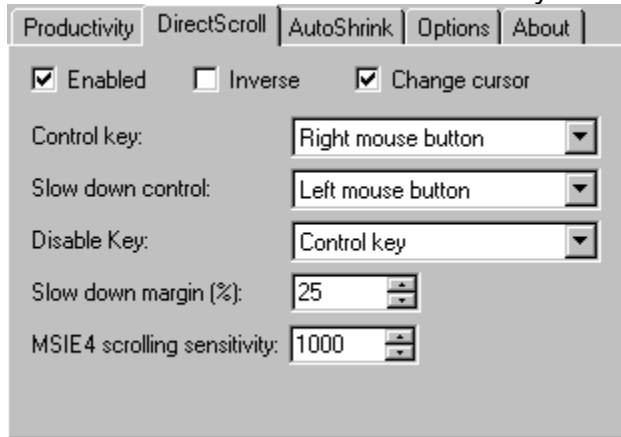
Also, please visit our web site at <http://www.tv4studios.com>

DirectScroll

[Introduction](#)

[QuickStart for use DirectScroll](#)

To scroll a window, you normally have to drag scroll bar's thumb or click its arrows. MouseImp offers a better solution. Just position the cursor over the window, use *DirectScroll* activation shortcut (right mouse button by default) and move the mouse. You can also slow down scrolling for the better accuracy by using slow down activation shortcut that defaults to left button of your mouse.



Enabled

Enable or disable DirectScroll feature of MouseImp.

Control Key

Defines DirectScroll activation shortcut. When activated, mouse pointer and tray icon reflect possible scrolling directions. In DirectScroll mode MouseImp intercepts all mouse movements and translates them to scroll commands. Simple button clicks, however, will not be intercepted by MouseImp.

Disable Key

Defines shortcut to temporarily disable DirectScroll. Can be useful if DirectScroll activation shortcut is used by another application. For instance, if right mouse button is assigned as Control Key for DirectScroll and you want to drag-and-drop icons by using right button, use Disable Key to do that.

Slow down control

Selects shortcut to activate slow down mode.

Slow down margin

Indicates how much slower scrolling speed would be in slow down mode.

Inverse

Inverts scrolling direction.

Change cursor

Allow visualize by change mouse cursor.

MSIE4 scrolling sensitivity

Allows to tune sensitivity (or smoothness) of scrolling in Microsoft Internet Explorer 4.0 windows.

DirectScroll Quick Start

[Introduction](#)

[DirectScroll](#)

To use *DirectScroll*, perform these simple steps:

1. Place mouse pointer over the window you want to scroll.



2. Press *DirectScroll* activation shortcut (right mouse button by default). If the window is scrollable (and has scroll bars), mouse cursor and tray icon will indicate possible scrolling directions.

Tip: sometimes you may need to perform drag and drop operation by using mouse button occupied by DirectScroll. Press and hold down DirectScroll Disable Key (Ctrl by default) for that.



3. Move your mouse in required direction.



4. To get more scrolling accuracy you may want to slow scrolling speed down. Use slow down activation shortcut (left button by default) for that.

Please see [DirectScroll](#) for more information.

Frequently Asked Questions

[Introduction](#)

[Quick start for use AutoShrink](#)

[QuickStart for use DirectScroll](#)

Q) Horizontal scrolling works anywhere, but not in MSIE windows.

A) MSIE the very specific application. And the MouseImp scrolling way, working for other applications does not work in it. Since version 1,0 we have added special support for MSIE, but only for a vertical direction.

Q) MSIE scroll is too inertial.

A) Disable "smooth scrolling" option in MSIE (View -> Internet options -> Advanced -> Browsing -> Use smooth scrolling).

Introduction

[Licence](#)

[Contact us](#)

[History](#)

Mouselmp is a handy tool designed to improve productivity and convenience when working with standard mouse in Windows 95/98/NT/2000. Offering new possibilities, its small and efficient code does not affect your system's performance.

Extend your workspace with AutoShrink.

Many programs offer fast access to basic functions by using toolbars, or small windows floating above program's workspace. AutoShrink removes toolbars from the screen for your convenience, only caption bars remain. To access a toolbar, just point to its caption, and it will be restored immediately. AutoShrink is also useful to operate on topmost windows like ICQ.

Improve productivity with DirectScroll.

Reduce mouse movements and save time required to scroll windows. No more moving the cursor to scroll bars and back - just use shortcut to activate DirectScroll - and enjoy.

Thank you for using Mouselmp.

TV4 STUDIOS

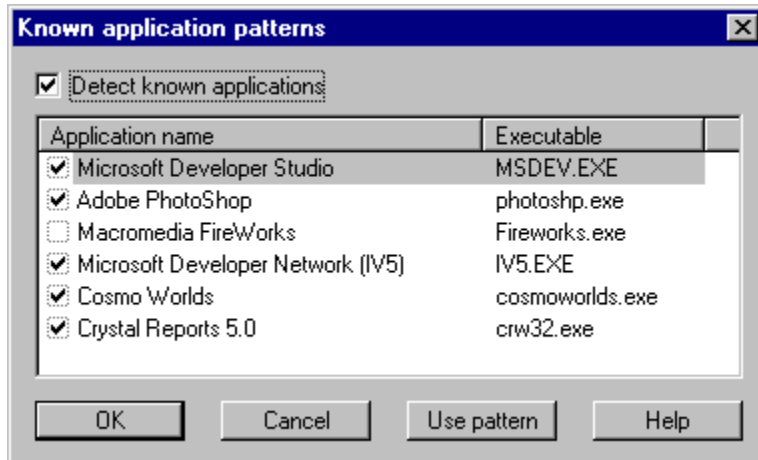
Known application patterns

[Introduction](#)

[Quick start for use AutoShrink](#)

[AutoShrink](#)

Mouselmp offers a set of predefined application patterns to be used with "known" applications. If you use some of them and want to take advantage of AutoShrink, you can do it right away. When known application is launched, Mouselmp requests your authorization to activate AutoShrink, but does it only once, unless application name is checked in the list.



Detect known applications

Enables Mouselmp to monitor execution known applications. When known application is launched, Mouselmp will ask whether you want to enable AutoShrink in it.

List of Known Application

The list contains names of known applications. Check box next to application name appears cleared if this application has been detected; otherwise it is checked.

Mouselmp monitors launch of checked items and ignores unchecked ones.

Use pattern

Add pattern of selected item to AutoShrink's list of used patterns.

Licence

[Introduction](#)

[ContactUs](#)

Mouselmp by **TV4 STUDIOS**
License for use and distribution.

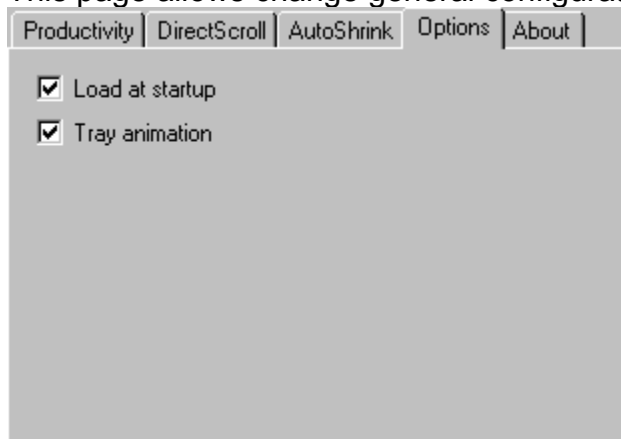
1. All copyrights to Mouselmp are exclusively owned by the **TV4 STUDIOS**.
 2. This version of Mouselmp is freeware. It may be freely distributed, as long provided the distribution package is not modified. No person or company may charge a fee for the distribution of Mouselmp without written permission from the copyright holder.
 3. MOUSEIMP IS DISTRIBUTED "AS IS". NO WARRANTY OF ANY KIND IS EXPRESSED OR IMPLIED. YOU USE AT YOUR OWN RISK. **TV4 STUDIOS** WILL NOT BE LIABLE FOR DATA LOSS, DAMAGES, LOSS OF PROFITS OR ANY OTHER KIND OF LOSS WHILE USING OR MISUSING THIS SOFTWARE.
 4. You may not use, copy, emulate, clone, rent, lease, sell, modify, decompile, disassemble, otherwise reverse engineer, or transfer the program, or any subset of the program, except as provided for in this agreement. Any such unauthorized use shall result in immediate and automatic termination of this license and may result in criminal and/or civil prosecution.
- All rights not expressly granted here are reserved by **TV4 STUDIOS**.
5. Installing and using Mouselmp signifies acceptance of these terms and conditions of the license.
 6. If you do not agree with the terms of this license you must remove Mouselmp files from your storage devices and cease to use the product.

Thank you for using Mouselmp
TV4 STUDIOS
info@tv4studios.com

Options

[Introduction](#)

This page allows change general configuration of MouseImp.



Load at Windows start

Allow load MouseImp then Windows starts.

Tray animation

Allow tray icon animation.

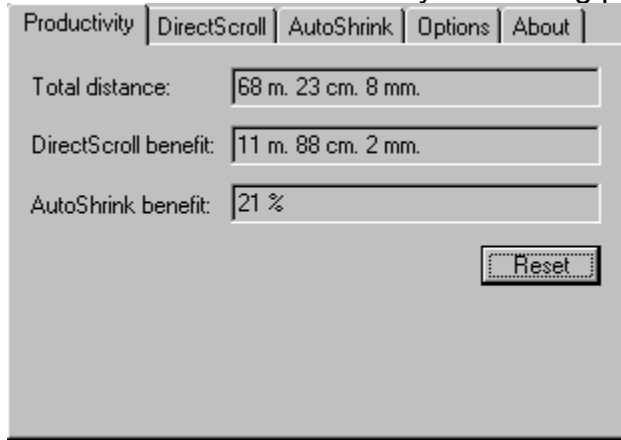
Productivity

[Introduction](#)

[DirectScroll](#)

[AutoShrink](#)

MouseImp features save your time and extend useful workspace on your screen. You can evaluate its usefulness by monitoring productivity data



Category	Value
Total distance:	68 m. 23 cm. 8 mm.
DirectScroll benefit:	11 m. 88 cm. 2 mm.
AutoShrink benefit:	21 %

Reset

Total distance

Indicates overall distance ran by your mouse.

DirectScroll benefit

Approximate distance of mouse run saved on using MouseImp.

AutoShrink benefit

Percentage of workspace extended by AutoShrink.

Reset

Immediately resets all counters.

What's new

Introduction

Version 1.0

- Minor user interface enhancements.
- AutoHide is renamed to AutoShrink to reflect what's really happening better.
- Fixed AutoShrink's incompatibility with Windows 98.
- Pieces of code that saves configuration have been optimized.
- AppPattern is introduced: the user is prompted to utilize AutoShrink feature when MouseImp finds an application with known Window Patterns.
- Automatic loading can be enabled or disabled.
- Control key to disable DirectScroll is introduced. Can be useful in applications that require control key assigned to DirectScroll - like right mouse drag in Explorer.
- DirectScroll in MSIE4 is now supported.

Version 0.5

- First public version

