

"New Words" edit

Use this editbox to enter new words on the database. It will become enabled when you click on the "New" button.

"New words" list

This list contains all recently entered words (unless you checked the "Add to use words" checkbox when you entered them). Words on this list will not be played.

"Words Known" list

This list is a placeholder for words that you don't want to play anymore, but don't want to delete yet in case you may want to use them again on the future.

"Words in use" list

This list contains all the words that will be played when the program is in Run mode.

A note about age

Maybe one of the first questions you will make yourself is: What age is best for using this program?

The answer is easy. The sooner, the better. You already know how impressive babies' ability to learn is. And that ability is more impressive the younger they are. You can start using this program as early as 6 months of age, even if your child does not yet talk.

Please note that the program has been designed having different ages on mind. If your child is unable to even move the mouse, simply select a time interval between words. When she is old enough you will change the method to mouse movements, mouse button clicks, any keyboard key press and finally a particular key on the keyboard.

And, of course, the selection of words will be different depending on the age.

About dialog box

This button opens the About Momsoft Early Reader dialog, where you can see your registration information and the version of the program you are using.

Add a word and record it

In order for the program to use words, you have to enter them on the database. To enter a word, proceed as follows:

- 1) Open the configuration dialog
- 2) Select the Database Recording page
- 3) Click on the New button. You will notice how the edit box immediately below it becomes selected and enabled, i.e. accepting keystrokes.
- 4) Enter the word
- 5) If you want the newly entered word to be automatically added to the "Words in Use" category, check the "Add to use words" checkbox.
- 6) Click on the "Save" button. You will notice the following changes: The edit box becomes disabled (i.e. it will change its background and will not accept keystrokes), the "Add to use words" checkbox will disappear and the two sound buttons will be visible.
- 7) Click on the Record button and record the word using your microphone.
- 8) You can immediately check the recording quality by clicking on the Play button, which will have become enabled.
- 9) Repeat steps 7 and 8 as many times as needed to ensure the recorded voice is correct. Remember that you can also record your voice at a later time if you decide that it doesn't sound good.

A different method of recording words with your keyboard instead of using your mouse to start and stop the recording is explained in the [Edit the sound of a word](#) topic.

See Also:

[Troubleshooting sound problems](#)

[Recording recommendations](#)

Note:

MomSoft Early Reader does not allow duplicate words. If you enter a word that is already present on the database, the program will not present any error message, it will simply ignore the action.

Add to "Use Words"

Check this checkbox to have new words automatically added to the "Words in use" list.

Adding backgrounds to the main window

We enjoyed the selection of the backgrounds for the main window so much that we decided to leave it open for you as well. You can add the backgrounds of your choice and use them.

MomSoft Early Reader looks on the folder named pictures, right under the main folder of the program, usually this would be c:\Program Files\MomSoft\MomRead\images.

To have your background picture included on the list of available backgrounds you should copy to that folder a picture in the JPG format.

Please be sure that the pictures you add are suitable for tiling them, otherwise they won't look very well. You may find this kind of pictures using the following keywords: images or pictures or graphics and seamless. There are quite a number available on the Internet.

Background Color

Select the background color. It should have a good contrast with the font color. It is recommended that you use dark fonts over a light background. You should use either white or a very light color as the background.

Background Colors

You should try to have a good contrast between the foreground and background, but not one that is distracting or too much impacting. Also, it is believed that it is much easier for the eye to read dark letters over a bright background (although it is becoming very popular on some web sites to do the opposite, making it a touch of "graphical design").

Bold Font

Select whether you want to use **Bold** or Normal letters. Depending on the size and font selected you should choose whether it looks better using Bold fonts. Usually bigger fonts will look better on bold, as shown below:

Big font **Big Bold font**

Can this program do harm

Consider the time the average child spends watching TV, and kind of things she will see, and you will realize that this program is most probably a much better alternative.

Nevertheless there are some risks involved in using MomSoft Early Reader that you should be aware of:

- **Don't have unnecessary expectations:** This is just a learning tool, not a miracle. Learning to read is a difficult and lengthy process. Don't expect your child to start reading (and understanding) Shakespeare a few weeks after starting to use the program. Also, never assume that your child must be dumb since your neighbour's child started to read much sooner. There are so many variables involved that, simply, comparisons cannot be made.
- **Don't force your child:** Forcing your child to sit in front of the computer and expend several hours a day to accelerate the process is not a good idea. Things don't work that way. Learning to read is fun and you should ensure that remains so. Your child should ask you to run the program after the first few times, for the method to work its best.
- **Don't test your child:** Participating in the development of your child is great. You see how much her mind advances day by day. Making her demonstrate her progress is good, both for you and for her, but abusing it is counterproductive, producing unnecessary and harmful frustrations for both of you. When you are testing the progress of your child be sure to reinforce the achievements and not pay any special attention to the failures.

Cancel Button

Closes the "Configuration Dialog" losing all changes made.

Configuring MomSoft Early Reader

All the configuration options of the program are accessible through the Configuration Dialog. A general explanation of the different options is presented so that you can understand what kind of options are available.

The settings of the program correspond to three different types:

Operation of the Program

Database Management

Working with Categories

Contacting MomSoft

The best way of contacting MomSoft is visiting our web page, press the button below to open your browser and navigate to MomSoft home page:

{button Navigate to MomSoft web site,EF(`start`,`http://www.momsoftco.com',0,`)}

If the button fails, please direct manually your browser to

<http://www.momsoftco.com>

You may also contact us by e-mail using the following Internet e-mail address:

momsoft@momsoftco.com

If you prefer the old-fashioned way, you can contact MomSoft by snail mail:

Manuel Onate
MomSoft
P. de la Habana, 134
28036 Madrid (Spain)

Contents

Introduction

- >> [What is MomSoft Early Reader](#)
- >> [How to use the program](#)
- [A note about age](#)
- [This is a game](#)
- [What words to use](#)
- [What can you achieve](#)
- [Can this program do harm](#)
- >> [Tutorial](#)
- >> [Sending your feedback](#)

Reference

- >> [The Main Window](#)
- >> [Configuring MomSoft Early Reader](#)
 - [Operation of the program](#)
 - [Database Management](#)
 - [Working with categories](#)
- >> [The Configuration Dialog](#)
 - [General Settings page](#)
 - [Database Recording page](#)
 - [Database Select page](#)
- >> [Recording Recommendations](#)
- >> [Troubleshooting Sound Problems](#)

Other Information

- >> [Definition of Shareware](#)
- >> [How to order the program](#)
- >> [Registration Benefits](#)
- >> [Ombudsman Statement](#)
- >> [Disclaimer and Agreement](#)
- >> [Contacting MomSoft](#)
- >> [Technical Support](#)
- >> [Revision History](#)
- >> [Other programs by MomSoft](#)

Database Management

In essence MomSoft Early Reader is just a database of words and their sound. Therefore it includes all the typical functions of any database, i.e. Add, View, Edit and Delete. These functions are explained in more detail in the following topics:

Add a word and record it

Play a word

Edit the sound of a word

Delete a word

In addition to these database functions, MomSoft Early Reader enables you to categorize the words in three different categories. You should understand what are these categories and how you can use them to your benefit reading the topics below:

Working with categories

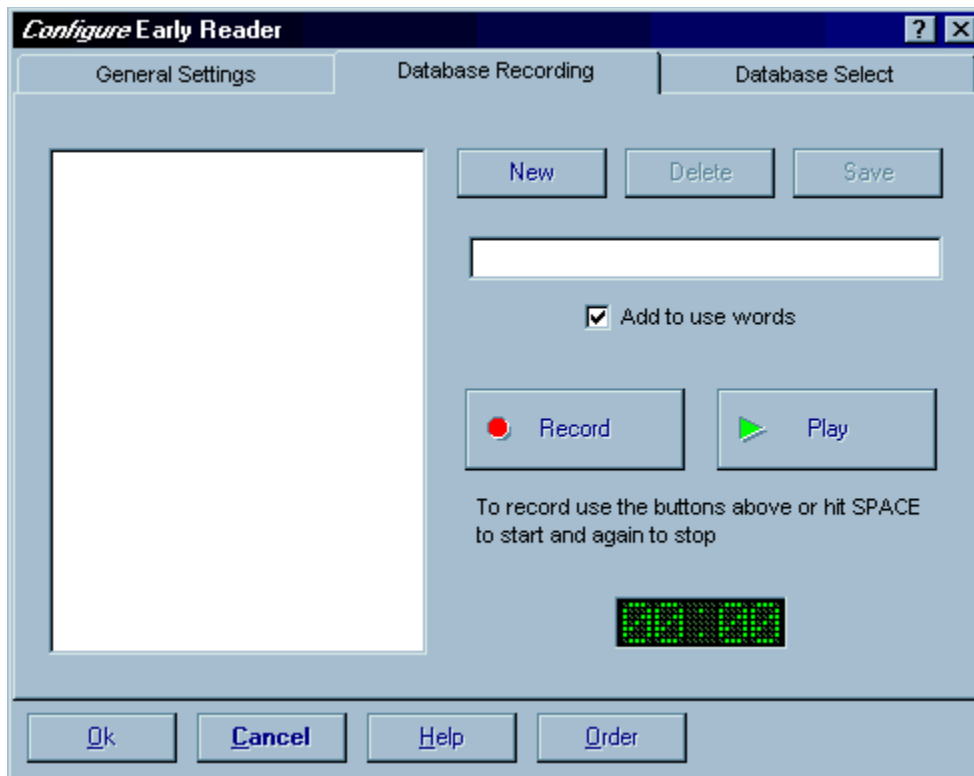
Moving words between categories

Selecting the initial category of new words

Database Recording Page

On this page you can set up the general configuration settings of MomSoft Early Reader. Click on the different controls represented below for an explanation on their function.

See also the topic [Database Management](#) for a general explanation of the functions you can perform with the database of words maintained by MomSoft Early Reader.



Database Select Page

On this page you can select which words will be used by the program out of all the words already entered on the database. Click on the different controls represented below for an explanation on their function.

See also the topic [Working with Categories](#) for a general explanation on the meaning of the different categories.

Configure Early Reader [?] [X]

General Settings | Database Recording | Database Select

New words	0	Words in use	0	Words known	0
<div></div>		<div></div>		<div></div>	

All None

 → ←

All None

 → ←

All **None**

Ok

Cancel

Help

Order

Definition of Shareware

Shareware distribution gives users a chance to try software before buying it. If you try a Shareware program and continue using it, you are expected to register. Individual programs differ on details -- some request registration while others require it, some specify a maximum trial period. With registration, you get anything from the simple right to continue using the software to an updated program with printed manual.

Copyright laws apply to both Shareware and commercial software, and the copyright holder retains all rights, with a few specific exceptions as stated below. Shareware authors are accomplished programmers, just like commercial authors, and the programs are of comparable quality. (In both cases, there are good programs and bad ones!) The main difference is in the method of distribution. The author specifically grants the right to copy and distribute the software, either to all and sundry or to a specific group. For example, some authors require written permission before a commercial disk vendor may copy their Shareware.

Shareware is a distribution method, not a type of software. You should find software that suits your needs and pocketbook, whether it's commercial or Shareware. The Shareware system makes fitting your needs easier, because you can try before you buy. And because the overhead is low, prices are low also. Shareware has the ultimate money-back guarantee -- if you don't use the product, you don't pay for it.

Delay length

Select the number of seconds (between 2 and 10 seconds) between words. Note that the longer the delay, the higher the risk of your child getting bored with the program, but if you play words too quickly it will be difficult to learn them. You should experiment until you find the most appropriate delay.

Delete a word

To work with the words contained on your database open the Configuration Dialog by clicking on the "Configure" button on the Main Window and select the second page: Database Recording.

Selecting the word to use

At the left of the page you will see a listbox containing all the available words on the database, click on any of them. You will notice the following changes the first time a word is selected:

- The edit box at the right will show the currently selected word.
- The delete button will be enabled (on the full version only)

Deleting a selected word

If you have the full version of MomSoft Early Reader you can delete words you are not going to use anymore, or that have spelling errors by clicking on the delete button. Doing so will delete both the word and its sound.

Delete button

To delete a word click on the "Delete" button.

When creating a new word the caption of the button will change to "Cancel". Clicking on the button will cancel the current word creation.

Disclaimer and Agreement

Users of MomSoft Early Reader must accept this disclaimer of warranty: ***"MomSoft Early Reader is supplied as is. The author disclaims all warranties, expressed or implied, including, without limitation, the warranties of merchantability and of fitness for any purpose. The author assumes no liability for damages, direct or consequential, which may result from the use of MomSoft Early Reader."***

MomSoft Early Reader is a "shareware program" and is provided at no charge to the user for evaluation. Feel free to share it with your friends, but please do not give it away altered or as part of another system. The essence of "user-supported" software is to provide personal computer users with quality software without high prices, and yet to provide incentive for programmers to continue to develop new products. If you find this program useful and find that you are using MomSoft Early Reader and continue to use MomSoft Early Reader after the 30 day trial period, you must make a registration payment. The registration fee will license one copy for use on any one computer at any one time. You must treat this software just like a book. An example is that this software may be used by any number of people and may be freely moved from one computer location to another, so long as there is no possibility of it being used at one location while it's being used at another. Just as a book cannot be read by two different persons at the same time.

Commercial users of MomSoft Early Reader must register and pay for their copies of MomSoft Early Reader within 30 days of first use or their license is withdrawn. Site-License arrangements may be made by contacting MomSoft.

Anyone distributing MomSoft Early Reader for any kind of remuneration must first contact MomSoft for authorization. This authorization will be automatically granted to distributors recognized by the (ASP) as adhering to its guidelines for shareware distributors, and such distributors may begin offering MomSoft Early Reader immediately (However MomSoft must still be advised so that the distributor can be kept up-to-date with the latest version of MomSoft Early Reader).

You are encouraged to pass a copy of MomSoft Early Reader along to your friends for evaluation. Please encourage them to register their copy if they find that they can use it.

Early Reader Questionnaire

Please take a few minutes to fill the questionnaire and send it to us:

Your name: _____

How many children are using the program?: _____

What are their ages (when starting to use the program)?:

What is your relation with them?:

___ Parent ___ Other relative ___ Teacher ___ Other (Specify _____)

What words did you used to start with the program?:

_____	_____
_____	_____
_____	_____
_____	_____
_____	_____

How would you describe the learning experience for yourself?:

How would you describe the learning experience for the child(s)?:

Where you already aware of a similar method before using the program?:

___ Yes (Had you tried it?: ___ Yes ___ No)

___ No

Do you have any suggestions for this program?:

Thank you very much for your participation.

Edit the sound of a word

The use of your voice is fundamental to the reading learning process. For that reason we have taken all the possible measures to ensure that you can record and play your voice as easy and convenient as possible.

There are two ways of controlling the recording of your voice, using your keyboard or using the mouse. Please use the method that best suits your habits, or use both.

To work with the words contained on your database open the Configuration Dialog by clicking on the "Configure" button on the Main Window and select the second page: Database Recording.

Selecting the word to use

At the left of the page you will see a listbox containing all the available words on the database, click on any of them. You will notice the following changes the first time a word is selected:

- The edit box at the right will show the currently selected word
- Two sound control buttons, labeled "Record" and "Play" will be made visible

Recording with your mouse

To record a selected word with your keyboard press the space key to start the recording and press it again to stop it. During the recording you will see a timer displaying the length of the sound being recorded.

Recording with your keyboard

To record a selected word with your keyboard press the space key to start the recording and press it again to stop it. During the recording you will see a timer displaying the length of the sound being recorded.

Playing a selected word

Whenever a word is selected on the available words listbox you can play it by clicking on the Play button. During the length of the sound the caption of the button will change to "Stop" to enable you to interrupt the playing of the sound and a timer will display the length of the sound being played.

See Also:

[Troubleshooting sound problems](#)

[Recording recommendations](#)

Exit the program

This buttons closes MomSoft Early Reader.

Font Color

Select the color used to show words. You will want to use a color that has a good contrast with the background color you select. It is recommended that you start with red letters and end with black or dark blue letters over a light background.

Font Name

Select the font you want to use to show the words. You will want to use a non-serif font, such as Arial and you should use True Type fonts rather than bitmapped fonts.

Font Size

Select the size of the font. You will want to use larger sizes at the beginning and reduce the size as your child progresses.

Fonts and typefaces

There are four different families of fonts, the first two are normal fonts, while the last ones are for special purposes:

- **Non serif fonts:** Such as **Arial**. These are fonts usually easy to read and the best choice in this case.
- **Serif fonts:** Such as **Times New Roman**. These are slightly more difficult to read, although they might be appropriate in some cases since they are very popular in books and periodicals. In case you wonder, they take their name from the little caps at the ends of the letters, which are called serifs. On these fonts usually the widths of the letters varies in different parts of them.
- **Decorative fonts:** Such as **Comic Sans MS**. As their name implies they are for decorative purposes and therefore should not be used for this program since they are usually much less readable.
- **Symbol fonts:** Such as **Dingbats (Dingbats)**. They don't contain letters so they are definitely not suitable for a program like this.

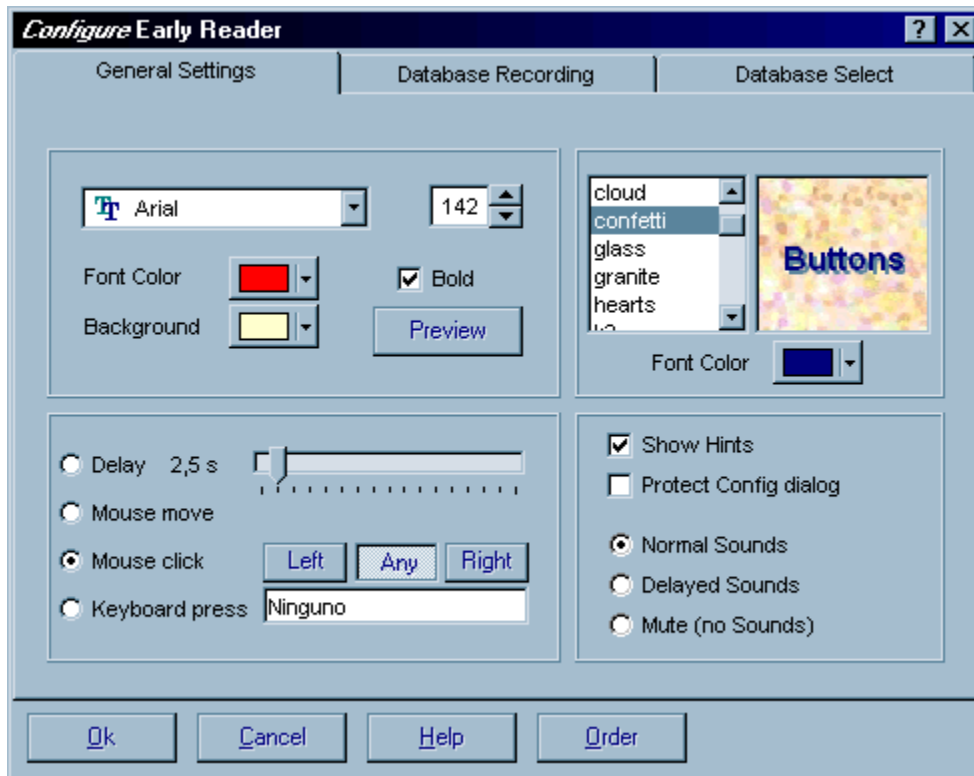
Another classification of fonts is based on the technology used to render them on screen. There are basically two types:

- **Vector fonts:** These fonts provide a good resolution independence because they are stored internally as a series of paths which can be mathematically scaled to different sizes. Therefore they do not lose quality on bigger sizes and can be scaled to any size. Generally you should only use this kind of fonts. Two popular types of vector fonts are True Type and ATM fonts. You can tell which of your installed fonts are True Type because of a little icon next to the name of the font (represented below).
- **Bitmapped fonts:** Also known as raster fonts. They are stored internally as a sequence of dots which are either black or white (or more generally, background and foreground color). Consequently they can only be resized in integer multiples of their initial size and they lose their quality as they are scaled further.

General Settings Page

On this page you can set up the general configuration settings of MomSoft Early Reader. Click on the different controls represented below for an explanation on their function.

See also the topic [Configuring MomSoft Early Reader](#) for a general explanation on the configuration options of the program.



See Also:

[Typefaces](#)

[Colors and Contrasts](#)

How to order the program

If you continue to use MomSoft Early Reader after the 30 day evaluation period you should buy it.

The full version of MomSoft Early Reader has no limit on the number of words you can enter, record and play.

Once you order the program you will receive the code that unlocks the application.

IMPORTANT! If you have an e-mail address be sure to include it with your order, even if you are ordering with the option of receiving the code by mail. If you don't supply an e-mail address, or the one you supply is invalid, you will receive your registration code by surface mail (which is SLOW), and you will not be able to receive upgrade notices.

The cost of MomSoft Early Reader is US\$ 35. If you require the registration code or the latest version of the program to be sent to you by mail, please note the S&H costs:

Registration code by mail: US\$ 3.00
Last version by mail: US\$ 5.00 (you will receive the code by mail also at no extra cost)

Please note that the price of MomSoft Early Reader is guaranteed until 31 December 1998. You should check the current price after that date before ordering.

Registration is EASY! Currently there are several ways of ordering MomSoft Early Reader:

Ordering on the World Wide Web

Ordering by E-Mail, Fax or Mail

Ordering by Phone

If you want to check the latest version of the software, or if there are more ordering options available, please click the button below to visit our web site:

{button Navigate to MomSoft web site,EF('start','http://www.momsoftco.com',0,'')}

If the button fails, please direct manually your browser to

<http://www.momsoftco.com>

How to use the program

This topic explains how the program works in a non-technical and general way. To learn about the operation of the program in greater detail go to the [Configuring MomSoft Early Reader](#) topic.

MomSoft Early Reader is a learning tool for babies. It has been developed using our own children as the perfect beta testers. We tested the program with them while we constructed the program, noting what they liked in it, and what made it easy for us, as parents, to configure it.

In essence, what the program does is manage a user defined database of words and their sound. The program lets you insert new words and record them using your own voice. Later you can play them, showing them on screen. That way your little child will gradually recognize the writing of the sounds, thus learning to read the written word.

In addition the program can be configured to enable the interaction of your child with the program. This is one of the most intriguing facts of the relation between babies and computers. They discover very soon that the computer, as opposed to TV sets, can be managed by themselves. They know that clicking that button, or moving the mouse, will result in something they expect happening on the computer screen. Babies love knowing what is going to happen, that is what makes computers fun for them as they learn how to open and close windows and see that things happen as they expect.

See Also:

[A note about age](#)

[This is a game](#)

[What words to use](#)

[What can you achieve](#)

[Can this program do harm](#)

[Tutorial](#)

Invoke help

This button opens the appropriate help topic

List of backgrounds

Select from the list the background picture you want to use on the Main Window. You may insert your own pictures, that will be used by the program. Please read the documentation of the program to learn how.

List of words

On this listbox are shown all the words present on the database. To work with a word select it from the list.

Main Window Font Color

This is the color that will be used for the hidden buttons on the Main Window. Select a color that has a good contrast with the background picture.

Main Window Preview

This panel lets you see how will the Main Window look like with the current selection of background image and font color.

MomShell

MomShell 32 has been chosen "Pick of the Week" of CompuServe's Windows 95 Forum and ZDNet rates it as a 5-star program.

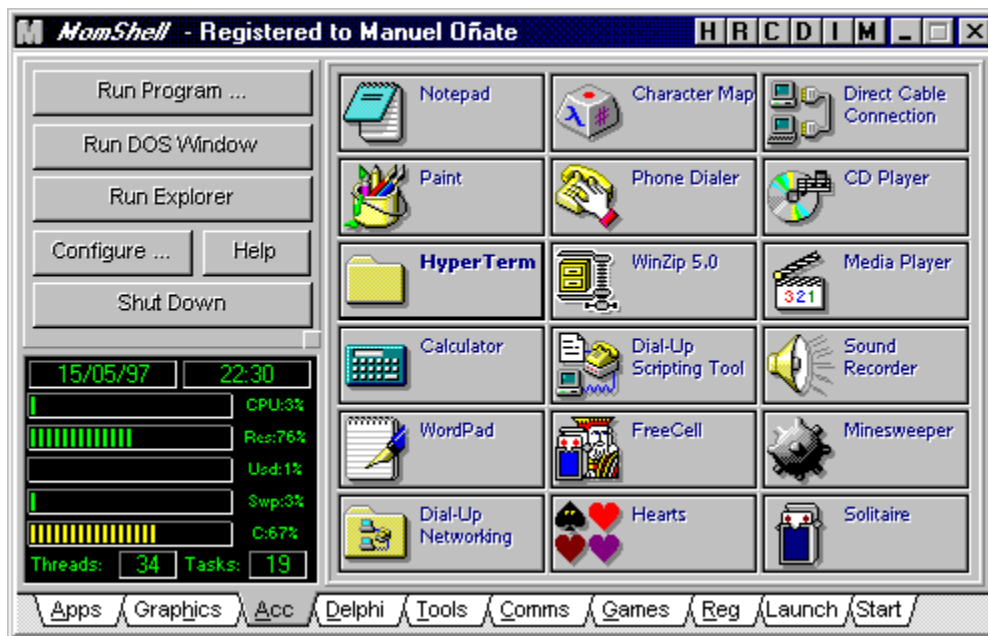
MomShell is not intended to replace the Explorer but to complement it to better manage your library of software. It has many improvements over the Start Menu of Windows 95, yet it supports all the functionality of your existing Shell.

Your programs are arranged in groups of related programs. You select the group you want to work with simply clicking in a notebook-like tab. You may choose to prevent launching a second instance of any running program (even DOS programs), and rather have the running instance pop up to the front. You may select the priority of your programs, run them hidden or as topmost windows. You may even replace the icon used to represent your programs with your own.

MomShell continuously monitors the most important resources, including Windows User, System and GDI free resources (yes Windows 95 has still them!), swap file size and usage, hard disk free space and, in battery operated laptop and notebook computers, remaining battery charge. You can select the minimum level, that once reached will bring up an alarm window to notify you of the low resource condition.

And much, much more. Try it for free during 30 days to see if it suits your needs.

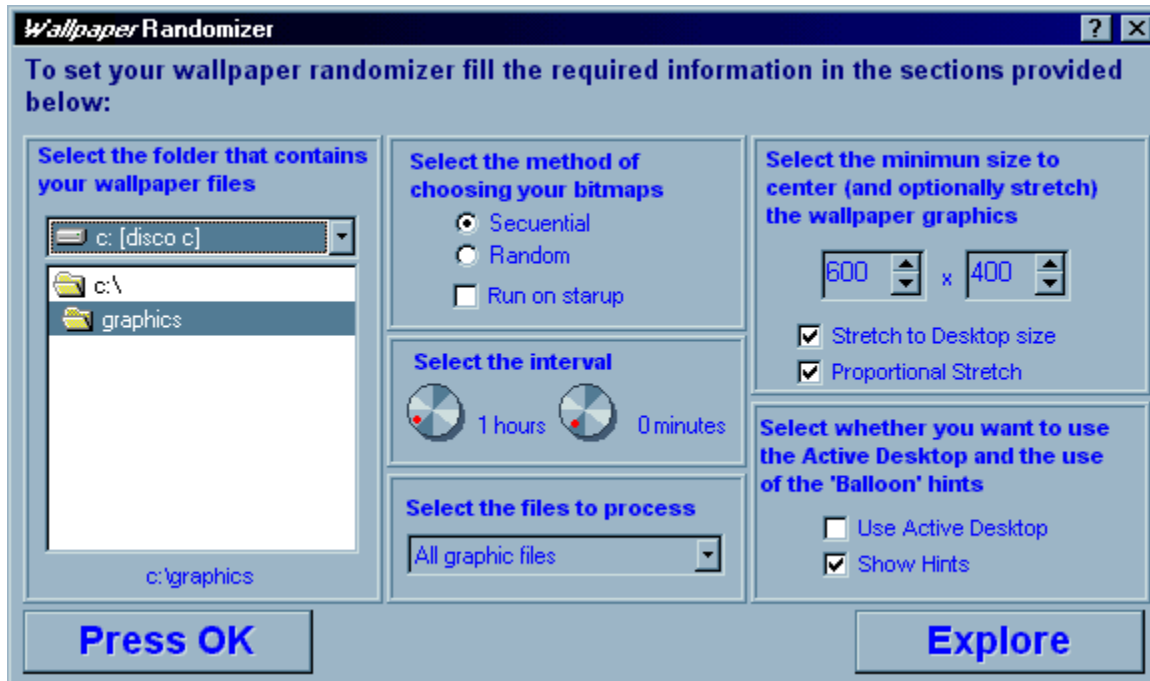
The main Window of MomShell 32 is shown below:



If you haven't yet upgraded to Windows 95 there is a Windows 3.x version available!

MomWallpaper

MomWallpaper is a Wallpaper randomizer. It has many configuration options, as shown on the picture of its main window below:

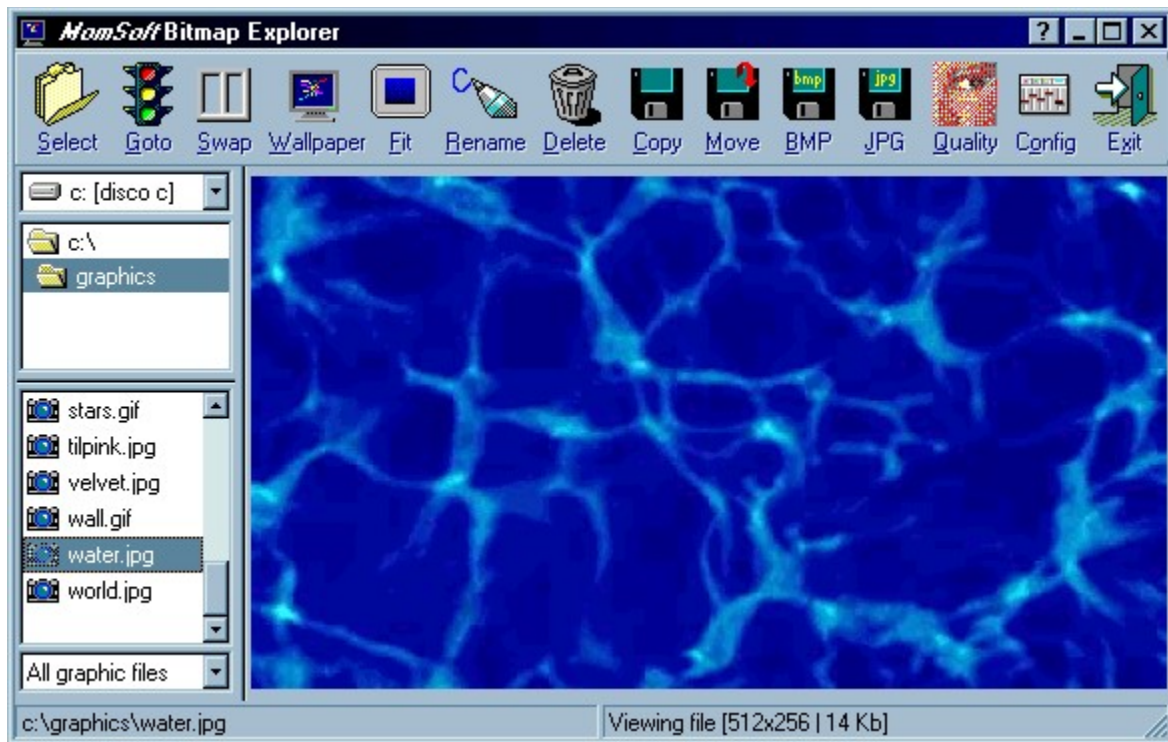


Manuel Oñate, the chief programmer at MomSoft says:

I started MomWallpaper as a gift to one of my nephews who had just got his computer and discovered the Internet is full of nice action photos he could use as wallpaper for his desktop. But the standard Windows way of processing wallpaper is cumbersome (to say the least). Therefore, I make the utility for him, and discovered how funny wallpaper can be. I added feature after feature until a full blown program emerged. The result is MomWallpaper.

MomWallpaper understands and uses the following graphic formats: BMP, JPG;JIF, DIB, RLE, TGA and PCX. That means that you don't have to convert those nice background images you get from the Internet, and also it saves a lot of hard disk space.

In addition MomWallpaper includes a bitmap explorer (shown below) which, by itself, will make a nice addition to your utilities library:



Move words to "New words" list

Click on this button to move all selected words on the list above it to the "New words" list.

Move words to "Words Known" list

Click on this button to move all selected words on the list above it to the "Words known" list.

Move words to "Words in use" list

Click on this button to move all selected words on the list above it to the "Words in use" list.

Moving words between categories

To move words from one category to another use the arrow buttons located below the word lists. Clicking on them will move all selected words to the category pointed out by them.

Selecting words one by one:

Click on the word you want to select. You will notice a colored bar surrounding the word, marking it as a selected word. To unselect a word, click again on it.

Selecting all words in one category:

Click on the "All" button located below the word lists to select all words on that list.

Unselecting all words in one category:

Click on the "None" button located below the word lists to unselect all words on that list.

New Button

To enter a new word to the database click on this button. The edit box below will become enabled so that you can enter the new word.

Ok Button

Saves the changes made and closes the "Configuration Dialog"

Ombudsman Statement



This program is produced by a member of the Association of Shareware Professionals (ASP). ASP wants to make sure that the shareware principle works for you. If you are unable to resolve a shareware-related problem with an ASP member by contacting the member directly, ASP may be able to help. The ASP Ombudsman can help you resolve a dispute or problem with an ASP member, but does not provide technical support for members' products. Please write to the ASP Ombudsman at 157-F Love Ave., Greenwood, IN 46142 USA, FAX 317-888-2195, or send email to omb@asp-shareware.org.

Open Configuration dialog

This button opens the configuration dialog, where you can configure MomSoft Early Reader to your liking and manage the database of words and sounds.

Operation of the Program

There are four categories of settings that affect how the program looks and feels and how it operates:

Word Representation

The core of the program is, of course the presentation of words to your child. You have complete control over how are words printed on screen: font, size, color, and style. You may even change the background color, although it is very unlikely that you would like to change the light yellow that is used as a default by the program.

It is suggested that you start with big red letters in a non-serif font and that you gradually reduce the size of the letters and eventually change their color to the traditional black used normally on books. Alternatively a dark blue could be a good alternative.

Fonts and typefaces

Background Colors

Main Window appearance

We tried to achieve an appealing main window. After all the final users of the program are the kind of users that enjoy a good graphic. We wanted also to have the program stand out when it is executed, thus helping your son to recognize **his program** easily.

The problem is that we were not able to agree on what combination of picture and letters was the best. Therefore we decided to leave it as an option. You can choose whatever combination you want, and you can easily create or import backgrounds for the main window. Be sure to select a combination of contrasts that makes the words and letters stand out from the background.

Adding backgrounds to the main window

Sequence of Words

You can completely customize how do you want the program to present words to your child, there are four different methods which correspond to different ages of your child:

- **Time:** With this method, the program will present a new word every number of seconds you decide. This is appropriate for the youngest users.
- **Mouse movement:** With this method, the program will present a new word when the user moves the mouse.
- **Mouse click:** With this method, the program will present a new word when the user clicks on a mouse button (you can select if you want any button or a particular one).
- **Keyboard press:** With this method, the program will present a new word when the user presses a key on the keyboard (you can select if you want any key or a particular one).

Other settings

Finally there are other settings which control other aspects of the operation of the program. They are:

- **Use of hints:** If you are starting to use this program you will want all the possible help you can get. In particular the help hints, shaped in the form of a balloon, are really helpful since they provide you with

a short descriptive "hint" about the functionality of every control present in the program. Once you have used the program for a while you will not need these hints and you can disable them.

- **Sound Modes:** Usually you will have MomSoft Early Reader play the sound as the word is shown on screen, sometimes you will want to insert a slight delay (about 2 seconds) between the word being shown and the voice sounding. Finally, you can have the program simply show words without playing any sound. Be careful with the last two settings though, since your child can become confused by seeing the program behave differently every day.
- **Protect Configuration:** You may restrict access to the configuration dialog so that the "Configure" button on the Main Window only opens the Configuration Dialog if a combination of the "Ctrl" and "Alt" keys is pressed at the same time.

Order button

Opens a dialog box which enables you to see how to order the program and enter the registration key.

Ordering by E-Mail, Fax or Mail

You may also order by E-Mail or mail using the ordering program included with MomSoft Early Reader.

To order now, please click on the button below:

{button Order now by E-Mail or Mail,EF('register.exe','5,'Ordering_by_E_Mail__Fax_or_Mail')}

If the above button fails, you can still access the program by
selecting '**Order Now**' on the configuration dialog,
or by selecting the '**Order MomSoft Early Reader**' shortcut on the Start Menu

Once you have finished your order you can send it right away to the addresses below:

Method	Typical Delay	Address
Order by E-Mail	1 to 3 days	sales@kagi.com
Order by Fax	4 to 8 days	+1 510 652 6589
Order by Mail	4 to 8 days (plus transit time to KAGI)	1442-A Walnut Street #392-66 Berkeley, California, 94709-1405 USA

Note: The above addresses belong to KAGI, an independent ordering agency. They only handle orders. If you need technical support, please contact us.

If you are ordering multiple copies, please refer to the table below:

Licence	Copies to order	Price
Single License	1	\$35
Five Licenses	4	\$140
Ten Licenses	7	\$245
Twenty-Five Licenses	15	\$525
Fifty Licenses	25	\$875
Site License		CONTACT US

Ordering by Phone

Credit card orders by telephone or fax are possible by using the numbers below:

Voice: 1-800-699-6395 (10:00 am - 10:00 pm Eastern Standard Time - From the US only)
1-803-699-6395 (10:00 am - 10:00 pm Eastern Standard Time)
Fax : 1-803-699-5465 (Available 24 hours. International and business orders encouraged)

Please note the following MomSoft Early Reader item IDs:

Ordering Option	Northstar Product Id
Code by e-mail	2908
Code by mail	2909
Last version by mail	2910

Note: The above telephone numbers belong to NorthStar Solutions, an independent ordering agency. They only handle orders. If you need technical support, please contact us.

If you are ordering multiple copies, please refer to the table below:

Licence	Copies to order	Price
Single License	1	\$35
Five Licenses	4	\$140
Ten Licenses	7	\$245
Twenty-Five Licenses	15	\$525
Fifty Licenses	25	\$875
Site License	CONTACT US	

Ordering on the World Wide Web

MomSoft Early Reader can be ordered through a secure form in the WWW. Just stop by the MomSoft ordering page at <http://momsoft.pair.com/register.htm> for details.

Press the button below to have your browser launched and navigate to the ordering page:

```
{button Navigate to MomSoft registration page,EF('start','http://www.momsoftco.com/order.htm',0,'')}  
If the button fails, please direct manually your browser to  
http://www.momsoftco.com/register.htm
```

If you are ordering multiple copies, please refer to the table below:

Licence	Copies to order	Price
Single License	1	\$35
Five Licenses	4	\$140
Ten Licenses	7	\$245
Twenty-Five Licenses	15	\$525
Fifty Licenses	25	\$875
Site License	CONTACT US	

Other programs by MomSoft

In Addition to MomSoft Early Reader MomSoft currently produces three other programs. Click on the links below to learn more details about them:

[MomShell](#) - The Alternative Windows Shell

[Word PhoneBook](#) - The phonebook add-in for Microsoft Word for Windows

[MomWallpaper](#) - The wallpaper randomizer

Play a word

To work with the words contained in your database open the Configuration Dialog by clicking on the "Configure" button on the Main Window and select the second page: Database Recording.

Selecting the word to use

At the left of the page you will see a listbox containing all the available words on the database, click on any of them. You will notice the following changes the first time a word is selected:

- The edit box at the right will show the currently selected word.
- Two sound control buttons, labeled "Record" and "Play" will be made visible

Playing a selected word

Whenever a word is selected on the available words listbox you can play it by clicking on the Play button. During the length of the sound the caption of the button will change to "Stop" to enable you to interrupt the playing of the sound and a timer will display the length of the sound being played.

Play button

Click on this button to start playing your voice, and again to stop playing. Note that the button will change to reflect its current function.

Preview Button

Click on the "Preview Button" to see the look of your current selections. On the Preview Window the words "Early Reader" will be shown. To exit the preview window and return to the configuration dialog, move the mouse, click any button or press any key.

Protect Configuration Dialog

When your child is old enough to start by herself the program, you might want to prevent her changing the operation of the program, or deleting words. Checking this checkbox will require both the "Ctrl" and "Alt" keys to be pressed when clicking on the "Configure" button of the "Main Window" for the "Configuration Dialog" to open.

Record button

Click on this button to start recording your voice, and again to stop recording. Note that the button will change to reflect its current function.

Recording Recommendations

It is very important that the quality of the sounds recorded on the programs is good. The words spoken should be clear, there should not be appreciable delays at the start or the end of the words and the volume and speed of words should be consistent.

If you have not used the recording capabilities of your computer before, you should become accustomed with the process of recording your own voice. Different settings of volume for both the microphone and the speakers can affect the results. Also, different microphones require different distances between your mouth and the microphone.

The best way is to experiment. MomSoft Early Reader makes it very easy to record and play your voice until you get the best possible results.

A note about microphones

It is very common that the microphone bundled with your computer is of poor quality. A good microphone for voice is very cheap. If you are not getting good results no matter how you configure your system, chances are that the microphone you are using is of a poor quality.

Visit your local sound store and ask them to provide you with a good microphone to be connected to a computer to record your voice. You will enhance the results considerably at a very low price.

Registration Benefits

After the 30 day evaluation period you should buy MomSoft Early Reader or stop using it. When you order, you receive a registration key that unlocks MomSoft Early Reader, converting the evaluation copy into a full registered copy.

Registering MomSoft Early Reader not only is the lawful procedure if you are using MomSoft Early Reader after the evaluation period, but also will give you access to the following features:

Unlocking MomSoft Early Reader: The evaluation version is restricted to a database of 15 words. The full version has no practical limit on the number of words (around 500 words).

Free Upgrades: If you buy this version of MomSoft Early Reader, the unlocking code will be valid for future versions of this program, up to the next major release, and even if the price of new versions is increased. To get the latest version of MomSoft Early Reader, please click the button below to start your browser and navigate to MomSoft home page:

{button Navigate to MomSoft web site,EF(`start',`http://www.momsoftco.com',0,`)}

If the button fails, please direct manually your browser to

<http://www.momsoftco.com>

When you order MomSoft Early Reader you will be give a code that unlocks the program, thus enabling you to enter as many words as you wish. To unlock the program, open the Configuration Dialog and click on the "Order" button. On the dialog box that will appear click on the "Enter Code" button.

Revision History

This is the first released version.

Run MomSoft Early Reader

This button starts the playing of words and sounds.

Save Button

To save a new word just entered click on the "Save" button.

Select All

Select all the words contained on the list above the button, so that they will be moved with the arrow buttons the the appropriate list.

Select None

Unselect all the words contained on the list above it. This is useful if there are many words selected and you want to start a different selection.

Select keyboard key

Select which key you want to make a new word to appear or "None" for any key.

Select mouse button

You should select which mouse button will be used to play a new word. "Any" means that both buttons will make a new word to appear.

Selecting the initial category of new words

When you enter a new word you can have MomSoft Early Reader insert the new word directly into the "Words in use" category, thus eliminating the need of moving the words just entered from the "New words" category.

For your convenience, the program will remember the last setting used.

Send us your feedback

We developed this program to help our children. We would like to know if the program is helping yours!

In addition, we feel that our users can provide us with the information needed to enhance the program. For that reason we encourage that you send us your experiences with the program using any of the methods outlined below:

Via our web site:

We have placed a questionnaire on our web site for your convenience. Simply click on the button below to open your browser, fill the questionnaire and submit it.

{button Navigate to MomSoft web site,EF(`start`,`http://www.momsoftco.com',0,`)}

If the button fails, please direct manually your browser to

<http://www.momsoftco.com>

Via Electronic Mail:

Open the enclosed document: feedback.txt, complete it and send it using your email program to the following address:

earlyreader@momsoftco.com

Via Postal mail:

Please print the questionnaire and send it to our address:

Manuel Onate
MomSoft
Paseo de la Habana, 134
28036 Madrid
SPAIN

Show Hints

The "hints" are those small, balloon like, informative texts that appear whenever you place your mouse onto any control of the program. They explain what is the purpose of every control used on the program. When you are confident with the program you may turn them off.

Sound Options

There are three sound options, whose meaning is explained below:

- **Normal**, is the usual way of playing words. The program will play the sounds when they appear.
- **Delayed**, makes a small delay (2 seconds), between the moment the words are shown and their sound played.
- **Mute**, means that words will not be played, giving the parent the opportunity to say them aloud.

Technical Support

Sorry but we cannot guarantee we will be able to provide support to non-registered users.

Registered users can contact MomSoft as described for unlimited technical support. We will answer you in less than a week during normal working time (usually next working day if using e-mail). During the holidays it could take a bit longer (maybe two to three days).

Please. Don't try to contact the distributors for support. They are simply distributors and have no access to the source code, nor they have the expertise in the program to help you.

We will be very happy to receive feedback from users of MomSoft Early Reader. If you think there are improvements to the program, please share your ideas with us. If you have found a bug, please report it to us.

The Configuration Dialog

From this dialog you can access all the configuration options of the program. Click on the tabs represented below to access the specific instructions on each of the pages:

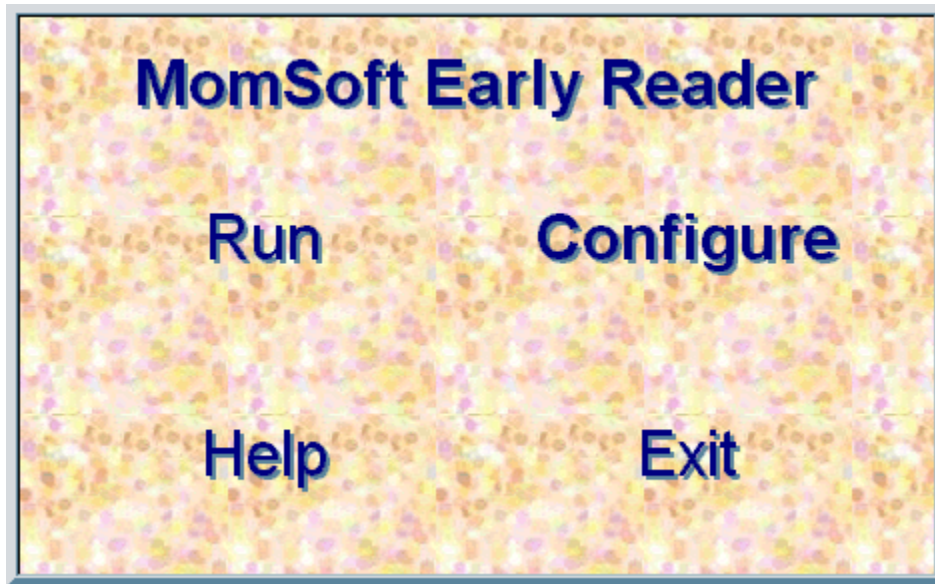
General Settings	Database Recording	Database Select
------------------	--------------------	-----------------

See Also:

[Configuring MomSoft Early Reader](#)

The Main Window

When you start MomSoft Early Reader a window like the one represented below is shown:



There are five hidden buttons on the window. When you place the cursor over the buttons, they show themselves. The meaning of the buttons is self evident, with the exception of the top one, labeled MomSoft Early Reader which presents the About box in which you can check what version you have installed. Click now on the buttons to see their function.

In addition you might find it interesting knowing how can you configure the main window to your liking.

This is a game

This is a very important issue. MomSoft Early Reader is not a task for your child. It is just another game. You should not impose any game on your child, nor should you do so with MomSoft Early Reader. You simply install the evaluation version on your computer, record a few words (on the evaluation version the limit is 15 words) and show the program to your child.

Most probably you will notice that your child likes the program. The combination of a light yellow background with big red letters is something that attracts babies. Hearing the well known voice of her Mom or Dad is also interesting for her. If she already talks you will see how she repeats the words loudly as she hears them (later, you will have the opportunity to see how she says them **before** hearing them). Eventually, something will distract her, and will lose interest in the game. No problem. That's very good for starters.

Later, you will start the program again and you will notice that she already knows what she can expect. She's waiting to hear the voice again and see the big red letters. Very soon she will go to the computer and will ask you (depending on the age she will use different methods) to run **her program**.

Never force her to pay attention to the program. It is not really necessary and it would surely make her lose interest in it.

Another caution. It is very gratifying to show your friends that your child can read! But don't abuse it. The program has two modes of operation which help you check whether your child really knows the words. On the "Delayed mode" there is a slight delay before playing the sound, so that the child can say it before hearing it. On the "Mute mode" the program will not play the sound at all. You should use these modes occasionally, and be sure that you don't convert them in an exam for your child. We don't like being tested and babies are no different from us in that respect.

Timer

During recording and playing this timer will show the length of the sound.

Transition Delay

Select a delay if your child is too young to use any of the other methods. In addition you should select the number of seconds between words. You should use a delay that doesn't bore the child, otherwise she will lose interest.

Transition Key Press

For older children, using the keyboard as the means of invoking a new word is the most appropriate method since they enjoy using keyboards.

Transition Mouse Click

This is a good intermediate setting, to be used after the child has been using the mouse movement to change words. It gives them an even better feedback than simply moving the mouse.

Transition Mouse Move

With this setting, words will change as your child moves the mouse around. Note that each word will be visible for at least 2 seconds, even if the mouse is moving continuously. This is a good setting for children old enough to manipulate the mouse since it provides them with an easy feedback to their actions, therefore making the program interactive.

Troubleshooting Sound Problems

MomSoft Early Reader uses your sound card to record and play sounds. It requires that multimedia is properly configured and installed on your computer. Configuring the multimedia capabilities of your computer is no easy task. On this topic we will try to help you troubleshoot the problems you might encounter.

In the event of any problem playing and recording sounds with MomSoft Early Reader, we recommend the following course of action:

Solving the obvious issues

First, try to see if your computer and sound system is functioning. Make sure that the speakers are turned on and connected to the appropriate connection of your sound card. To facilitate your tests, open the Control Panel folder and click on the Sounds settings. Select any sound and press the test button. You should hear a sound.

If you don't, and all the connections look all right maybe the problem is that the volume level is set too low, or even turned off. You may have a little speaker icon on your tray bar. Click on it and a volume control should appear enabling you to increase the volume setting

If the tray icon is not shown, you may access the same functionality from the Multimedia applet of the Control Panel. If you don't have a multimedia icon on your Control Panel folder, it means that you have not installed multimedia support. You might do it using the Add New Hardware applet, and selecting your sound card. Of course, if you don't have a Sound Card you won't be able to even try MomSoft Early Reader.

Testing with the Recorder applet included on Windows

If you are getting sounds out, but you are unable to record you may have problems with your recording settings. It might prove to be useful to use the recorder.exe application which should be present on your Windows folder. This little application is available at the Start Menu under Start | Programs | Accessories | Multimedia. If you don't find it, you may try to locate it opening your windows folder with the Explorer, it is usually called c:\windows. Search for recorder.exe.

When you hit the record button you should see things happening: A wave being represented, a timer advancing and a progress bar advancing.

Again, you might have your microphone not properly connected, or the volume setting too low, or even completely disabled. You will be able to solve these problems on the Multimedia applet of the Control Panel.

Access the Multimedia settings of your computer

The multimedia settings are conveniently stored under the Multimedia applet on the Control Panel. You are only interested in the first and last pages: Sound and Advanced.

On the sound page, you should see your sound card selected as the preferred device for playing and recording and you can also set the volume settings.

On the advanced page you will see all the different drives and devices related to multimedia. Look for exclamation signs on top of the represented icons. They mean that there is a conflict that must be solved for the whole multimedia system to work.

Tutorial

When you first execute MomSoft Early Reader a dialog with five hidden buttons will be shown. Most probably you will have clicked on the Run button, causing this tutorial to appear.

This is a very short tutorial which will guide you through the basic steps required to use the program. Please follow it completely. It will take just under 5 minutes.

Note: You may find it convenient to print this topic to follow it easily

Step 1 - Open the configuration dialog

Click on the Configure hidden button. The configuration dialog will appear:

For this tutorial the default settings will be sufficient. You will learn later how to completely configure the program to suit your needs. All you will need is to record a few words to see the program in action.

Step 2 - Select the Recording Database page

On this page you can enter new words, recording (and playing) the associated sounds.

Step 3 - Enter a new word

To enter a new word simply click on the New button. You will notice the cursor jumps to the edit box immediately below. Enter the word and hit enter. The word will be saved to the database and the sound controls will be shown.

Step 4 - Record the word

Click on the button labeled "Record", you will notice how the button changes into a "Stop" button and a timer appears right under it showing the length of the recording.

Pronounce the word you have just entered loudly and clearly.

When you have finished click again on the button (now labeled "Stop"). The timer will disappear.

Step 5 - Play the recorded word

Now, click on the Play button. You should see how the button converts itself in an "Stop" button and you will hear your voice saying the word.

You can experiment with the volume control to obtain the best possible results. Also, you can re-record the sound as many times as you need until you get the sound you want. Simply repeat steps 4 and 5 as many times as required.

Caution: If you were not able to record your voice, you might want to see the [Troubleshooting Sound Problems](#) topic.

Step 6 - Enter, Record and Play a few more words

Repeat steps 3, 4 and 5 a few times, entering some more words. You can enter up to 15 words on the evaluation version, so be careful which words you enter. Once a word is entered on the database it

cannot be deleted (although you can record its sound as many times as you need to make it sound as you want it).

Step 7 - Select the Database Select page

Click on the tab labeled "Database Select". You will see three lists labeled: "New Words", "Words in use" and "Words known"

Step 8 - Move all entered words to the "Words in use"

The words that the program uses in any particular run are the ones that are included on the "Words in use". Therefore, in order to use and hear the words you just entered you should move them to that list.

To move words one by one simply click on them and drag them one by one to the "Words in use" list. Or, you may click on the little arrow right under the "New Words" list and move them all to the "Words in use" list.

Step 9 - Close the configuration dialog, saving changes

That is all that is needed to start using the program

Step 10 - Execute the word list

You should be seeing the initial window (with the 5 hidden buttons). Simply click on the "Run" button and you will see how the words you've just entered are shown and your voice saying them.

When you are done, click the "Esc" key or click on the little button at the top-left corner of your window.

Congratulations! You know how to use MomSoft Early Reader

What can you achieve

First of all, we are not completely sure this is a meaningful question. In our own case we are not really concerned about what exactly we are going to achieve with our sons. This is not what we intend. We are having a lot of fun playing with the program and we feel that it is good for all of us (the parents and the babies), and that is all we want and need.

But, if you insist, the answer is that you can have your child learn to read, even before she can even talk!

Do you think that is impossible?

Think of yourself. Surely, if you think about it, you'll realize it is much easier for you to read in any foreign language than to speak that same language. Well, it is easier for you because it is a lot easier to read than to talk. That is what makes this method work.

What is MomSoft Early Reader

*This program is dedicated to our sons: Alfredo and Gonzalo.
They are the primary reason for writing the program,
and for many other things.*

A method was brought to our attention some time ago, which explained how to teach your child to read. We had already noticed the attraction the computer has over babies, so we decided to combine the method with the computer. The result is MomSoft Early Reader.

We have used the program with our own children. They love the program! At the time of this writing it is very difficult to say if they have learned to read, but it looks like they have advanced quite a lot. And it is fun for us to record new words and see how they react to the new words. We have decided to publish the program as shareware to share it with other parents. We are truly interested in knowing your experiences with the program, hopefully to make it better.

If you are interested in following a certain, well-proven method, by all means go to your local bookstore and ask for books on the subject. There are some good ones and you will be sure that you are getting the most of this program. But we think that there is no need to follow any particular method. You will probably notice during the evaluation period that your child likes the program and that you enjoy using it. It is just one more way to interact with your child, and it is a good way. If the child learns to read, that is just great! If she doesn't, you can be sure that you have helped her in getting to know the tool of the twentieth century: **The computer.**

A note about genders

When composing this guide we tried not to assume any particular sex for the final users of the program. For that reason we decided to use both genders at the same time. That is, sometimes we use the masculine and others the feminine.

What words to use

Every child learns words in a different way, and at a different pace. Nearly all babies start with the word "Mom" as their first word, followed with "Dad". After that, there are no rules. In your case, select the words that are more meaningful for your son or daughter.

You will notice that your son will suggest words to you in different ways. That is very good for the learning process since your son will surely pay more attention to words that he has suggested.

You can use words whose meaning is not yet known to your son, but you should start doing it only when he is accustomed to the learning process described on this document.

Word PhoneBook

Word PhoneBook is an Add-In for Microsoft Word for Windows 6, 95 and 98. It is a database of names, addresses and fax numbers that automates the process of writing letters, faxes and envelopes under Word. The approach is different to other similar utilities in that it uses variables that are defined in your Word templates, in the places you want the data to be inserted. The Main Window of Word PhoneBook is represented below:

Word PhoneBook - 3.0

Database | Mail Merge | Configuration

General

Name:

Company:

Title:

Treatment:

New Record | Edit Record | Delete Record | Cancel | Insert Document

Letter or Envelope

Address 1:

Address 2:

Address 3:

First Item: ☐ Name ☒ Company

☒ Use Company ☒ Use Title ☒ Use Treatment

Company
Treatment Name
Title
Address1
Address2
Address3

Fax and Telephone

Fax #:

Phone #:

☒ Use Company ☒ Use Title ☒ Use Treatment

Treatment Name
Title
Company
Fax#

Letter, Envelope, Fax and Telephone | Additional Fields

Select 'New', 'Edit', 'Delete' or 'Insert' | Unregistered Lite Version

Working with categories

MomSoft Early Reader has three categories of words:

- **New words:** By default, words entered are placed on this category and you should manually move them to the next category for the program to use it. This has been done this way so that you can ensure the consistency of word sounds entering and recording several of them in one session, even if you don't plan to use them immediately.
- **Words in Use:** These are the words MomSoft Early Reader will use.
- **Known Words:** This category is a placeholder for words that were used in the past, and you want to stop using them temporarily. Instead of deleting them, you can place words in that category just in case you decide to use them again later.

See Also:

[Moving words between categories](#)

