

**Welcome to**  
**Win A Lotto V3.0**

**Ticket File Overview**  
**Wheeling Tables**  
**Entering Tickets Manually**

**Database File Overview**  
**Importing**  
**Updating**

**Frequency of Numbers**  
**Frequency of Pairs**  
**Skipping Habit**  
**Cluster Analysis**  
**Past Performance**

**Registering Win A Lotto**

Following are the goals of this application :

1. Provide the user with an easy to use application for maintaining lottery tickets and historical data for the games they play.
2. Provide the user with meaningful, easy to understand statistical analysis of lottery data.
3. Provide a convenient way to employ wheeling tables while giving the user the flexibility of entering their own number combinations.

We hope the information provided in our help utility will answer most of your questions about our product. If not, please feel free to contact us via the internet. Our web site is located at **[www.FixedIt.com](http://www.FixedIt.com)** and we can be reached via e-mail at **[HelpDesk@FixedIt.com](mailto:HelpDesk@FixedIt.com)**.

## Ticket Files

Win A Lotto uses ticket files to store the tickets you wish to play. These files are created by selecting 'Create Ticket File' from the 'File' menu. From here, you can choose to use a Wheeling Table or have your numbers Entered Manually. Which ever method you choose, the following attributes will apply :

### Popup menu options:

The following popup menu is accessible from the Ticket File dialog by moving the mouse over the ticket window and clicking the right mouse button :



- By selecting Change Background, you will be allowed to change the image that is used in the ticket window background. This image must be in a Windows compatible bitmap (.bmp) format.

- Selecting the Increase Fade item will increase the amount the background image is lightened by 5% up to 100% and the Decrease Fade item will decrease the fade by 5% until 0%.

- The Sort Tickets item will sort the numbers on your tickets numerically. If you are using a wheeling table, the sorting will be displayed but, cannot be saved to the file. This is necessary to preserve the integrity of the wheeling template.

- The Export Tickets item allows the user to save their ticket selections to an ASCII text file.

### Other Attributes:

- As with the database entries, each ticket can have as many as 10 regular numbers with up to 3 bonus numbers. The bonus numbers can be added to your file by selecting the Bonus Number button.

- When the current winning numbers change by either entering new numbers or opening a new database, the tickets in the ticket window will be evaluated against the winning numbers and the results will be displayed in columns next to the ticket entries.

Note: the waves will only be played for the first 100 tickets.

## Wheeling Tables

Wheeling tables offer you a greater statistical chance of winning a prize. This is possible by guaranteeing prizes that are less than the jackpot. A wheeling table can be thought of as a template which puts numbers you select into combinations that guarantees a prize under certain conditions (if 3, if 4, if 5, etc).

When selecting a wheeling table, the following information is provided:

- The number of tickets required to satisfy the condition of the wheel.
- How many lottery numbers to be wheeled.
- The prize guarantee, which is of the form **x of y if z**. For example: **4 of 6 if 5** guarantees that if 5 of the winning lottery numbers fall within the wheeled numbers chosen, one or more of the tickets is at least a 4 of 6 winner.

Win A Lotto allows you to create Ticket Files using a Wheeling Table or by Manually Entering Tickets

### Importing User Defined Tables :

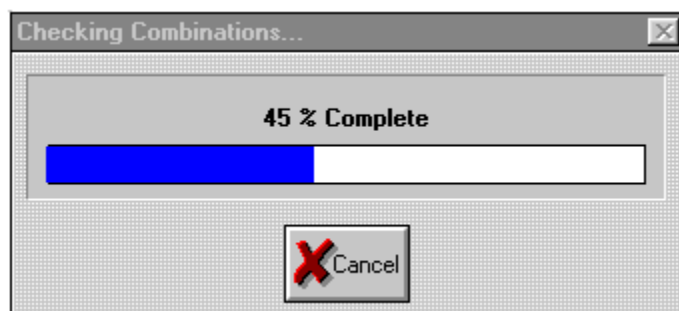
In addition to the wheeling tables provided, the user can import their own wheeling tables. This is accomplished through the 'Import Wheeling Table' dialog that can be accessed through the 'File'-'>'Import Wheeling Table' menu items.

The imported file needs to be in ASCII text format with the numbers delimited by spaces. Additionally, the table needs to be number based from 1 to N where N is how many numbers are being wheeled. For example, following is the wheel 10 numbers 4 if 6 :

```
1 2 3 4 5 6
4 6 7 8 9 10
1 2 3 7 8 9
```

Note: if you have a wheel that uses letters instead of numbers, convert it to a number based wheel before trying to import.

When importing your wheel, it's optional to have Win A Lotto confirm its guarantee. When importing **large** wheels, the time to confirm can be very consuming ... however, the confirmation can be cancelled at anytime by selecting the 'Cancel' button in the Progress Dialog box :



## Manual Ticket Entry

To enter tickets manually, select 'Create Ticket File' from the 'File' menu, then select 'Enter Tickets Manually'. Then:

- Select numbers for a ticket. Choose each number by clicking the check box until it contains a check. After each number is selected, Win A Lotto displays how many more numbers are needed to complete this ticket.

- Once a ticket is complete, all unselected numbers are disabled. At this point, review the numbers entered. If a number was entered in error, simply click on that number box again to remove the check mark, then select a replacement.

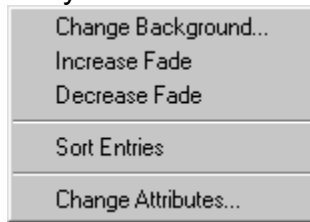
- Once a ticket is complete and all numbers are satisfactory, add the ticket to your file by selecting the 'Add Ticket' button. Once the ticket is added, all check boxes are cleared, and you are ready to select the numbers for another ticket.

- When all tickets are added, select the 'Done' Button. A window will appear displaying all the tickets in your new ticket file.

- Once a ticket file has been created, bonus numbers can be added by selecting 'Bonus Number' button from the 'Ticket File Dialog'. You may select individual bonus numbers for each ticket or select universal numbers to apply to all tickets. Editing bonus numbers is also accomplished via the 'Bonus Number' button.

### Accessing the database window popup menu:

The database popup menu is accessed by moving the mouse cursor over the database entry window and clicking the right mouse button. This menu looks like :



### Customize the database window:

The user is able to customize the database window by changing the background bitmap and increasing or decreasing the fade % of the background. These functions can be accessed through the database popup menu by clicking the right mouse button. Selecting 'Change Background' will allow you to select a .bmp to use as the backdrop to your database. Also, selecting the 'Increase Fade' menu item will fade the colors of the bitmap. This is useful when using darker bitmaps that hide the database entries.

### Sorting the database entries:

To sort the database entries, access the database popup menu and select 'Sort'. This will sort the numbers in each entry by number and all of the entries by date.

### Modifying the database name and other attributes:

Once a database has been created, it is possible to change its NAME, NUMBERS ON TICKET, and NUMBERS IN LOTTO. To access this function, select the 'Change Attributes' menu item from the database popup menu. The 'Change Database Attributes Dialog' will appear which will allow you to type in your changes and select 'Ok'.

Note: The NUMBERS IN LOTTO attribute will automatically change when you add an entry that exceeds its previous value.

### Modifying the database entries:



To change or remove an entry from your database, select the 'Modify Number' button from the database dialog. This will bring the user to the modify numbers dialog. Use the drop-down list box to access the entry you wish to change. Once the selection is made, the number-boxes will be filled with the current values. From here, you can either delete the entry or change the number fields.

### **Adding entries to your database:**

To add an entry to your database. Open the database you wish to maintain. Then select 'Winning Numbers' -> 'Enter New' from the main menu. From the enter winning numbers dialog, you can enter the new numbers and a date for the draw. To update your database, select the 'Add to Database' button.

### **Saving your database:**



To save your database, select the 'Save' button from the database dialog. If you use the .dat extension, then the database file will show up in the database list when opening a database. When changes have been made to your database, you'll be prompted to save the file upon closing the dialog. **Note :** To have your database opened at program startup, exit Win A Lotto while the database window is still opened.





## Importing results from Win A Lotto v2.X:

If you have an earlier version of Win A Lotto then, the historical data you have in this format can be imported and used by Win A Lotto v3.0. This is possible through the 'Import' menu item from the 'History' submenu. When asked for the file to import, navigate to the directory that stored your results (likely : c:\winalot\data ) and select any .db5 or .db6 file.

## Importing results to an existing database :



By selecting the IMPORT button on the database dialog, the user can import results from an ASCII Text file to the currently opened database. The format of the imported file needs to be similar to the following :

<Date> <Numbers> ~ <Bonus Numbers>

The **<Date>** field must start at column 0. If the first character encountered on a line is not between 0 and 9, then the entire line is ignored. The year must be only 2 digits e.g. 97 . Note: Win A Lotto supports Year 2000 and beyond. The year 2000 will be represented as 0 and will be sorted as a more recent draw than one in 99. This holds true until your database results span more than 50 years.

The **<Numbers>** field can start anywhere past the <Date> field as long as there is at least 1 non-number character separating them. There can be as many as 10 numbers and they can have leading 0s but, is not required.

The **<Bonus Numbers>** field can start anywhere past the <Numbers> field as long as there is a '~' separating the two fields. The '~' is necessary to tell Win A Lotto when to start reading the bonus numbers. There is a maximum of 3 bonus numbers. Note: the '~' is not necessary if your database doesn't include bonus numbers.

## Sample Import File:

10/12/97                    1   2 3 4 5 6   ~ 1 2

10-14-98 1 2 3 4 5 6 ~1 2

This is text that is ignored since the first character is not between 0-9

The next line is imported :

10.21.97                    1 2   3   4 05 06 ~   1 2

**Note:** Win A Lotto v2.X databases that do NOT have a bonus number are in

a valid format for importing with this function.

### **Adding entries to your database:**

 Add To Database

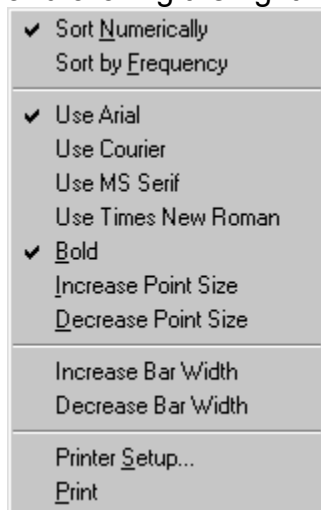
To add an entry to your database. Open the database you wish to maintain. Then select 'Winning Numbers' -> 'Enter New' from the main menu. From the enter winning numbers dialog, you can enter the new numbers and a date for the draw. To update your database, select the 'Update Database' check box. Upon closing this dialog, your database will be updated with the numbers you previously selected.

### **Updating from our Web Site:**

If you've registered Win A Lotto, then you can access our registered user's page at : **<http://www.FixedIt.com>** and download the latest results that we are distributing with Win A Lotto. Note: all minor version upgrades can will also be accessible from our web site.

## Accessing the frequency window popup menu:

The frequency popup menu is accessed by moving the mouse cursor over the window and clicking the right mouse button. This menu looks like :



## Printing the frequency window :

When printing the frequency window from the popup menu, the printout will be either sorted by frequency or by number depending on how it is currently displayed. When printing from the database dialog, the printout will be sorted by number.

## Customize the frequency window:

The user is able to customize the window by changing the background bitmap and increasing or decreasing the fade % of the background. These functions can be accessed through the 'Options', 'Statistics' menu items from the main menu bar.

## Hot and Cold Picks :

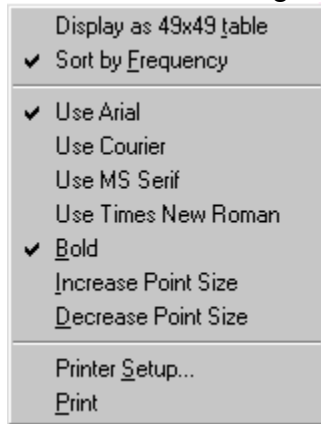


By selecting the 'Options', 'Statistics' menu items from the main menu bar, the user is allowed to customize the range of entries that will be used when displaying the statistics windows and when selecting the Hot and Cold pick buttons from the number selection dialogs. Additionally, the method of number selection can be based on occurrences of pairs or occurrences of numbers.



### Accessing the frequency of pairs window popup menu:

The frequency of pairs popup menu is accessed by moving the mouse cursor over the window and clicking the right mouse button. This menu looks like:



### Printing the frequency of pairs window :

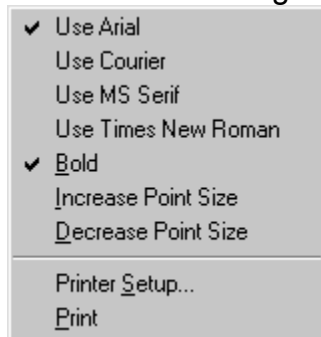
When printing the frequency of pairs window from the popup menu, the printout will be either sorted by frequency or in a table depending on how it is currently displayed. When printing from the database dialog, the printout will be in a table.

### Customize the frequency of pairs window:

The user is able to customize the window by changing the background bitmap and increasing or decreasing the fade % of the background. These functions can be accessed through the 'Options', 'Statistics' menu items from the main menu bar.

## Accessing the skipping habit window popup menu:

The skipping habit popup menu is accessed by moving the mouse cursor over the window and clicking the right mouse button. This menu looks like :



## Customize the skipping habit window:

The user is able to customize the window by changing the background bitmap and increasing or decreasing the fade % of the background. These functions can be accessed through the 'Options', 'Statistics' menu items from the main menu bar.

## Reading the skipping habit table :



	0	1	2	3	4
1	1	2	1	2	
2	3	4	5	1	
3	0	3	2	3	
4	1	2	0	2	
5	4	0	0	0	
6	2	3	5	2	
7	3	4	5	3	
8	4	7	4	1	
9	3	5	4	4	

For the segment of the table above, the number 1 skipped 0 drawings 1 time before occurring again, skipped 1 drawing 2 times before occurring again, etc.

Note: Numbers in red indicate the most occurring skip habit for that number. For example, the number 2 skipped 2 drawings before occurring again on 5 separate occasions.

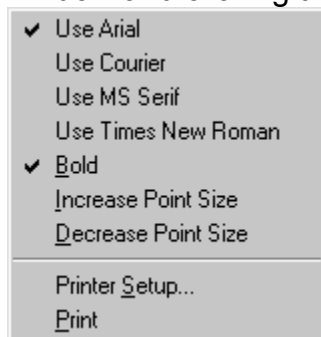
This statistic can be used to help predict when numbers are likely to occur again. For example, if the number '5' occurred on the last draw, one might predict that it will happen again for the current draw since this has happened on 4 other occasions ... while skipping 1, 2, and 3 have never happened before.





### Accessing the cluster analysis window popup menu:

The cluster analysis popup menu is accessed by moving the mouse cursor over the window and clicking the right mouse button. This menu looks like :

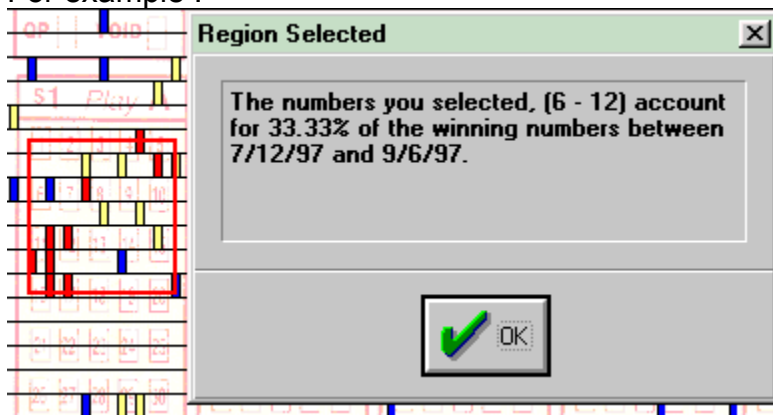


### Customize the cluster analysis window:

The user is able to customize the window by changing the background bitmap and increasing or decreasing the fade % of the background. These functions can be accessed through the 'Options', 'Statistics' menu items from the main menu bar.

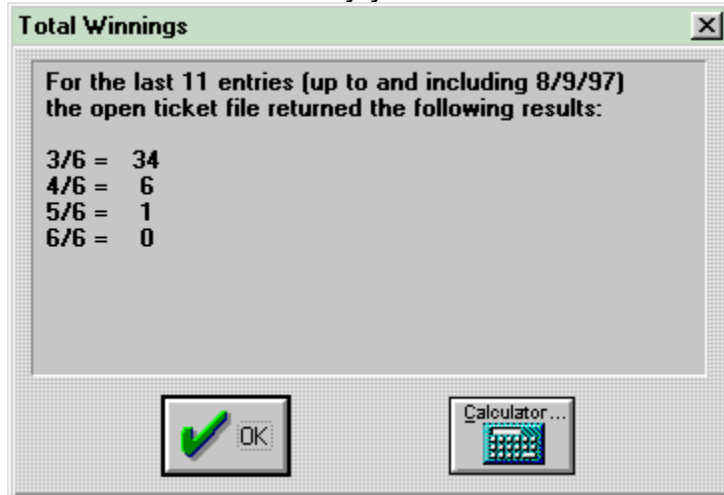
### Selecting a cluster region:

By clicking and dragging the left mouse button, the user can select a region of the cluster graph. The resulting dialog displays the percentage of coverage for that region. For example :



## Past performance of current ticket file :

In addition to the individual results in the database window, Win A Lotto will also total the results of how your ticket file did against the currently selected database. To obtain this dialog, double-click the left mouse button on any entry in the database entry window. Win A Lotto will total the results of your ticket file from the most recent entry in the database to the entry you clicked on. Following is a sample dialog :



## **The Benefits of Registering this Program :**

- When you register, you'll receive the full product without any shareware limitations. The shareware version is provided on the 'try before you buy' principle. If you like the program and would like to continue using it past a 30 day trial period, you are required to purchase the full product.
- Included are more than **100** predefined and confirmed wheeling tables.
- Included are more than **60** databases from the US, Canada, and other Nations. The current list includes but, is not limited to :

Arizona Pick 5 and 6, California Pick 5 and 6, Colorado Pick 6, Connecticut Pick 5 and 6, Delaware Pick 6, Florida Pick 5 and 6, Georgia Pick 5 and 6, Illinois Pick 5 and 6, Indiana Pick 5 and 6, Iowa Pick 5 and 6, Kansas Pick 6, Kentucky Pick 5 and 6, Ontario's Pick 6, Louisiana Pick 5 and 6, Maryland Pick 6, Massachusetts Pick 5 and 6, Michigan Pick 5 and 6, Minnesota Pick 5, Missouri Pick 5 and 6, Montana Pick 5, Nebraska Pick 5, New Jersey Pick 5 and 6, New York Pick 5 and Bonus Pick 6, New Hampshire Pick 6, Ohio Pick 5 and 6, Oregon Pick 6, Pennsylvania Pick 5, 6, and Keystone Pick 6, Rhode Island Pick 5, South Dakota Pick 5, Texas Pick 5 and 6, Tri-State Pick 6, Tri-West Pick 6, Virginia Pick 5 and 6, Washington DC Pick 6, Washington State Pick 6, Wisconsin Pick 6, West Virginia Pick 6, Canada's 6 out of 49 Pick 6, British Columbia's Pick 6, Power Ball, Ireland's 6/42 Bonus Pick, Hong Kong's Pick 6, United Kingdom's Pick 6, The BIG Game

- You'll receive free minor version upgrades and access to our Web site : **<http://www.FixedIt.com>** where you can access updated databases and wheeling tables.

## **To Order :**

1. By snail-mail :

Make check or money order payable to Fixed It! Software for the amount of \$35 in US FUNDS ONLY and mail to :

**Fixed It! Software**  
P.O. Box 372  
Capshaw, AL 35742

2. Using any major credit card, foreign or domestic, you can order on-line or via toll free number:

RegNet is a secure on-line ordering system that is setup to take orders for Win A Lotto. Win A Lotto's form can be reached at :

**<http://www.swregnet.com/260p.htm>**

Additionally, RegNet is available 24 hrs a day to take your order via their toll free number : **1 800 WWW2REG** (1 800 999-2734) or (805) 288-1827. If you call, please reference program #: **260**

3. Additionally, we have our own on-line store which can be reached via our home

page at **<http://www.FixedIt.com>** . When ordering via our on-line store, you will be given download access to the full product.

4. If you have any questions or concerns about ordering, feel free to contact us at : **[dturner@FixedIt.com](mailto:dturner@FixedIt.com)** or **[rcochran@FixedIt.com](mailto:rcochran@FixedIt.com)**

