

Win Pelvis-n-Space (tm) Help Index

How To...

- [Get Started](#)
- [Use Main Window](#)
- [Use Strategic Window](#)
- [Use Tactical Window](#)
- [Use Ship Status Window](#)

General Information

- [Background Objects](#)
- [Copyright and Licensing](#)
- [Game Levels](#)
- [Game Storyline](#)
- [Natural Disasters](#)
- [Relics](#)
- [Scoring](#)
- [Sector Color Code](#)
- [Ships](#)
- [Tips on Playing](#)

Reference Information

- [Menu Commands](#)
- [Toolbar](#)
- [Keyboard](#)
- [Mouse](#)
- [Term Definitions](#)

How to Get Started

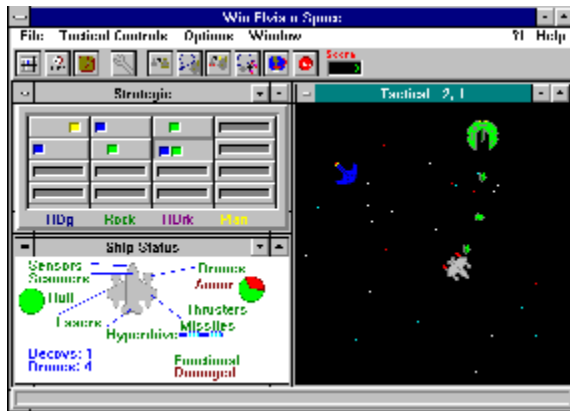
This game is written as a MDI application. The game main window is divided into many child windows. Each of the child windows (Strategic, Tactical, and Ship Status) is moveable and resizable. The Strategic window is used to give the player an overall view of the galaxy. The buttons represent the sectors of a galaxy. The Tactical window is the close-up view of a sector. The Ship Status window displays the current status of the player's ship.

The menu commands are different depending on the currently selected child window. For instance, to use the Strategic Scan command, the player must first select the Strategic window as the active window. Then, the Control menu option will change to reflect the commands available for the Strategic window. Each window has different Control commands.

Most of the menu commands have an accelerator keyboard command. For example, the Strategic Scan command can be invoked by the "C" key. The accelerators are listed to the right of the menu command.

How to Use Main Window

Please click left mouse button on parts of window to receive help.



Toolbar

The toolbar is a collection of buttons that will invoke certain menu commands. The toolbar is designed to make it easier to perform the commands. Following is the meaning of the buttons:



This button will perform the Strategic Scan Command.



This button will perform the Strategic Game Status Command.



This button will perform the Strategic Inventory Command.



This button will perform the Ship Status Repair Command.



This button will perform the Tactical Launch Decoy Drone Command.



This button will perform the Tactical Hail Supply Ship Command.



This button will perform the Tactical Dock Command.



This button will perform the Tactical Order Drones Back Command.



This button will perform the Tactical Orbit Command.

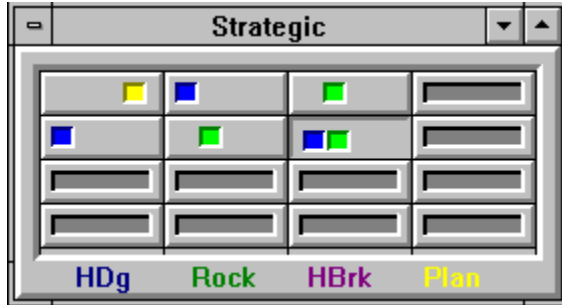


This button will perform the Tactical Stop Command.

Message Line

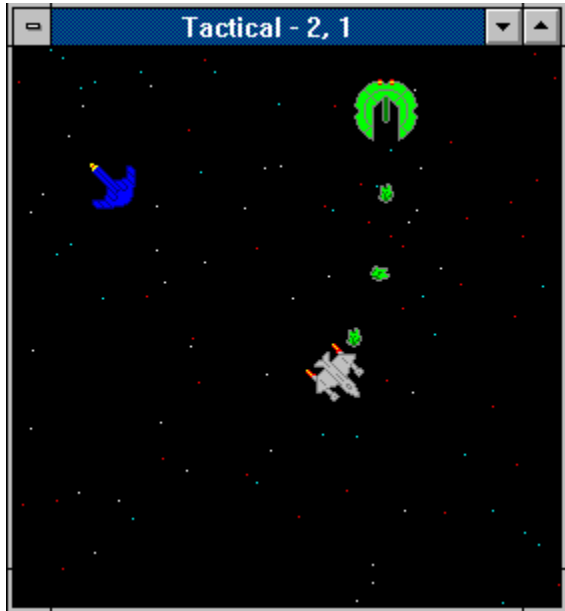
The message line is used to communicate with the user. Simple help messages are written into the message line when a toolbar button is pressed or a menu option is selected. Also, miscellaneous messages are written in the message line during the playing of the game. The message is erased after a few seconds.

How to Use Strategic Window



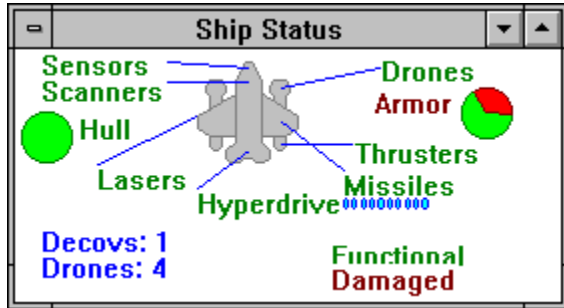
The player starts out a game in sector 0,0 (upper left corner of the Strategic window). The button is pressed indicating the current sector being displayed by the tactical window. The Sector Color Code for the sectors indicates the contents of the sector. The player can use the Strategic Scan command to scan the sectors next to the current sector. To move to another sector, the player presses the button of the sector to jump into. A maximum of two sectors can be jumped at a time.

How to Use Tactical Window



The Tactical window uses the mouse to control the player's ship. The left mouse button is used to activate the Tactical Popup menu. The player places the cursor over the object to be acted upon. Then the left mouse button is pressed. The player then selects the command to be performed on the object. For example, clicking the left mouse button on an alien ship and then selecting "Fire Pulse Lasers" will fire the Pulse Lasers at the ship. The player may also interact with some background objects such as a planet from the tactical display. To move the ship, place the cursor at the destination and then press the left mouse button. Now select "Set New Heading" command.

How to Use Ship Status Window



The Ship Status window contains the current status of the systems for the player's ship. The status is constantly updated. The player may change the order of the systems being repaired by using the Ship Status Repair command. For example, if the player wishes to have the hyperdrive engines repaired, the player would select the "Repair" command. The "Hyperdrive Engine" button is then selected to be repaired next. The left mouse button can be pressed to invoke the repair command.

Pressing the left mouse button anywhere in the Ship Status window will show the repair dialog box.

The number of attack drones, decoy drones and missiles is displayed.

The status of the hyperdrive engines and pulse lasers is shown.

Background Objects

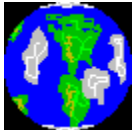
Background objects are seen on the Tactical Window. They are objects contained in the current sector. The player can interact with some of the objects. Following is a list of the objects:



This is a supply ship. The player can dock with it.



This is the alien planet Paceland. The player can orbit the planet.



This is our planet Earth. The player can orbit the planet.

Copyright and Licensing



Copyright © BFM Software 1993

Copyright © Brett McDonald 1993

Following are the system requirements:

- 1) 286 or higher processor
- 2) Windows 3.1 or higher
- 3) Mouse or other pointing device
- 4) Color monitor - High SVGA resolution recommended.

This game is shareware. This game is NOT free. If you like the game and continue to use it, you MUST register the game. Registration Fee: \$14.95 U.S.

BFM Software
Brett McDonald
38602 Lancaster Drive
Farmington Hills, MI 48331

To receive a disk with our latest software add \$4.00 to the registration fee.

Following are our BBS IDs:

Compuserve ID - 73770,1254
American On-line ID - BrettMc

We are a member of the Compuserve Shareware Registration system. You may register BFM Software products with Compuserve. They will add the fee to your bill and we will send you the registration. To access this system enter "GO SWREG". Select Register Shareware. Then search for the keyword "BFM" to find all BFM Software products.

Please include your name EXACTLY as you want it registered and the generated key from the registration dialog box.

You may distribute this software as long as the following files are included:

WPSREAD.TXT
WPS.EXE
WPS.HLP

All of the above files must be combined into a single file ZIP or other compression format for distribution.

Beyond a fee for the reproduction and media cost, no fee may be charged for distribution of this software.

This software claims no warranty, implied or otherwise. This software is provided "AS IS". The author claims no responsibility for any damages that might be caused by the use or abuse of this software. This software remains the property of the author. This software may not be modified in any way.

Game Storyline

We would like to inform you that Pelvis is definitely still alive! That's right, he didn't fake his own death. Pelvis did not overdose on little green pills either. Rather, he was taken from us by little green creatures, most commonly known as "aliens." Pelvis has been kidnapped by ALIENS!! Yes, it's sad, so very sad, but true. O.K., calm down. Don't get your pelvis in an uproar! It is important that you stay collected. You are going to play a crucial role in the mission of bringing Pelvis home. But, we will explain that to you later. "How can this be true?" "How did you find this out?" "Are you an investigative genius?" you might ask. Good questions, indeed. Well, let me fill you in. Our team of investigators, the SIVLEP ("Pelvis" spelled backwards or Some Idiots Violated the Life of er-Pelvis), found much evidence. First of all, the aliens have given us clues of the abduction through their crop-drawings. We found that this particular colony of aliens is obsessed by Pelvis just as our people were in the 1950's. Their planet, Paceland, was found to be 30-odd light years away. So, it has taken this long for Pelvismania to reach their planet. Now, this is where you come in. The government has initiated the building of the X63 interstellar cruiser that will send you on the mission to bring him home. You must now try to find the alien planet Paceland. "Why did we select you?" Well, do you have anything better to do with your life?!

Game Levels

This game can be played at different levels. The three levels are Beginner, Normal and Advanced. Below are the descriptions of the levels:

Beginner

This level is designed for new players. It is very easy and not very challenging.

- * The ? Command bubbles are automatically displayed at the beginning of the game.
- * The player gets fewer missiles.
- * The player gets fewer attack drones.
- * There are fewer alien ships in the galaxy.
- * Alien ships fire slower.
- * The player's score is penalized.
- * One less Decoy Drone is supplied.

Normal

This level is designed for a moderately paced, somewhat challenging game.

Advanced

This level is designed for players wanting a challenge. It is very fast paced.

- * The player gets more missiles.
- * The player gets more attack drones.
- * Many alien ships are in the galaxy.
- * Alien ships fire faster.
- * The player's score is enhanced.
- * One more Decoy Drone is supplied.

Natural Disasters

Natural Disasters are just a few of the situations commanders must deal with. The situations are very random and are not predictable. They are just a "fact of life" while being in space.

Some natural disasters will cause damage to any ship in the sector. Ships in a planet's orbit will be protected by the atmosphere. These types of Natural Disasters can either work for or against a player. If the player's ship is very damaged, it could finish the player off. On the other hand, it will also damage all the other ships in the sector the player is trying to defeat. Super Nova Bursts and Ion Storms are examples of these.

The other natural disaster is called a Wormhole. It does not cause damage to a player's ship, instead, the Wormhole makes it more difficult to keep control of the ship. It moves the ship to another location in the galaxy. This natural disaster can also work for or against a player, depending if the player wants to be moved away or near a sector with alien ships.

Relics

As the aliens traveled to Earth over the last few years, they have stolen some very valuable Pelvis relics. They are as follows:



The above objects are a Gold Album, Fendor Guitar, White Studded Jumpsuit, Peanut-butter/Bananas, Pink Cadillac, 8-track tape, and a Black Velvet Painting, respectively.

These relics are very highly valued by the aliens. The captains of their ships were given these objects as a reward for capturing Pelvis. You must destroy the alien ships to get the relics. These are the only things the aliens are willing to trade Pelvis for.

Scoring

Win Pelvis-n-Space keeps track of the player's score throughout the game. Every time an alien ship is destroyed, the player's score is incremented. The current score can be displayed from the Strategic Control Status command. The dialog box displayed will contain the current and high score for the player. Scoring values for destroying objects are as follows:

Object	Score	Description
	16	<u>Hound Dog Class Ship</u>
	22	Rock-n-Roll Class Ship
	30	Heartbreaker Class Ship
	4	Burning Love Class Fighter
	1	<u>Neutron Pellet</u>

The score is multiplied by the game level. The levels are beginner - one, normal - two, and advanced - three. For example, if an object's score is 10 and the player's level is normal, the total score for destroying the object is 20.

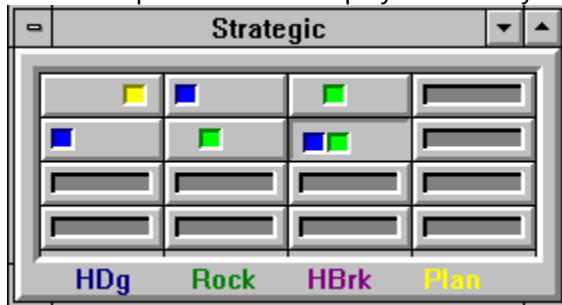
The following will cause a player's score to be decreased:

- * Launch Decoy Drone - decrease by 50.
- * Dock with Supply ship - decrease by 25.

A bonus is given to the player for destroying all alien ships in the galaxy. The bonus is based on the time taken to complete the game.

Sector Color Code

The Sector Color Code is the code for the notches in a scanned sector on the Strategic Display. Below is an example of a sector display followed by an explanation.



The gray button on the left is an unscanned sector. The bottom of the window has the color code as follows:

- HDg - Hound Dog Ship
- Rock - Rock-n-Roll Ship
- HBrk - Heartbreaker Ship
- Plan - Planet

For example, the pressed button indicates that at least one Hound Dog and Rock-n-Roll ship is in the sector.

Ships

The Earth only has one interplanetary ship class. Below is the information on that ship:



Class: X63
Type: Heavy Cruiser
Weapon: Pulse Lasers, Attack Drones and Missiles
Speed: Average
Armor: Strong
Hull: Thick

This ship is an all around performer. It is very large and heavily armored. It uses fighters as its main weapon. This ship is fast and very well designed. It will serve the player well.



Class: Attack Drone
Type: Drone
Weapon: Laser
Speed: Very Fast
Armor: Weak
Hull: Thin

This drone is fast. It uses a small laser. This attack drone is carried by X63s.

The aliens have a few different ship classes. Below is the information on each class:



Class: Hound Dog
Type: Destroyer
Weapon: Sonic Blaster
Speed: Fast
Armor: Medium
Hull: Medium

This ship uses a sonic blaster to shake the opponent's ship apart. This weapon has a long range and delivers quite a punch.



Class: Rock-n-Roll
Type: Destroyer
Weapon: Neutron Pellets and Tractor-Repulsor Beam
Speed: Slow
Armor: Medium
Hull: Medium

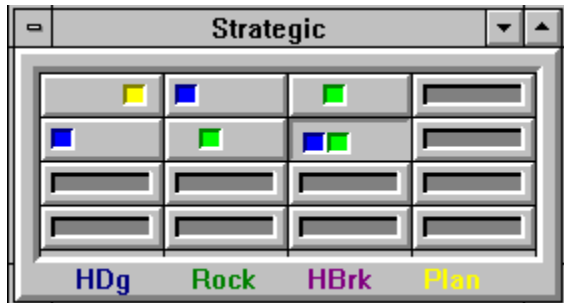
This ship launches neutron pellets that track the opponent's ship. These pellets can do a lot of damage. This ship also uses a tractor-repulsor as a defense against missiles and drones.



Class: Heartbreaker
Type: Carrier
Weapon: Fighters and Tractor-Repulsor

Speed: Slow
Armor: Heavy
Hull: Thick

This ship launches fighters that track the opponent's ship. These fighters do the dirty work for the ship. This ship also uses a tractor-repulsor as a defense against missiles and drones.



Class: Burning Love
Type: Fighter
Weapon: Plasma Fire
Speed: Very Fast
Armor: Weak
Hull: Thin

This fighter uses a plasma fire thrower. A group of these fighters can overwhelm an opponent.

Tips on Playing

This topic will give a few tips on how to play Win Pelvis-n-Space. The tips are as follows:

Strategic Display

- * The player should use Scan Command to view sectors before entering. This will eliminate surprises.
- * The player must remember that if the scanners are destroyed, all the sector displays will be reset.

Tactical Display

- * To defeat Hound Dog class ships - the player should fire pulse lasers at the ship from long distance. Missiles and attack drones don't do well against the Hound Dog's sonic blaster.
- * To defeat Rock-n-Roll class ships - the player should fire a few missiles at the ship. The missiles will destroy the ship. The player should run from the Neutron Pellets.
- * To defeat Heartbreaker class ships, launch a few attack drones. When the attack drones are about half way to the ship, a couple of missiles should be launched. The attack drones will destroy the Heartbreaker's fighters on the way there. The missiles will then destroy the ship.
- * The player can hail a Supply Ship when supplies run low.
- * Releasing a Decoy Drone is a good way to get out of a critical situation. The alien ships will attack it and not the player's ship.

Ship Status Display

- * The player can use the Repair command to indicate which damaged system to repair next. Damage control repairs systems in a certain order. The order is listed on the repair screen. Damaged systems are repaired in a top-down manner.
- * The player invokes the Repair command by clicking the left mouse button anywhere in the Ship Status window.

General Tips

- * Try to keep moving. The longer the player stays in a sector the greater the chance is that something bad will happen.
- * Find all the relics and then go trade for Pelvis on Paceland. After that, go back to Earth to win the game.

Menu Commands

File Menu

cc Control Menu

Option Menu

Window Menu

? Command

Help Menu

Tactical Popup Menu

File Menu

The File Menu includes commands that enable the player to control the game.

For more information, the user should select the File Menu Command Name:

New

Register

Uninstall

Exit

New

Selecting the New Command from the File Menu will cause a dialog box to be displayed. The user can then restart a game or cancel the new command. The user can select among three game levels which are beginner, normal, and advanced. The sound may also be set on or off on the dialog box.

Register

Selecting the Register Command from the File Menu will cause a dialog box to be displayed. The register command is used to register the game.

The user should enter his/her name in the name fields. This is used in messages to the user. The user must enter his/her first and last name.

The register dialog box has directions on the steps needed to register the game. This software must be registered after the 15 day trial period.

Uninstall

Selecting the Uninstall Command from the File Menu will cause a message box to be displayed. The user can select YES or NO to uninstall Win Pelvis-n-Space.

The following files are removed from the user's system in the uninstall processing:

- * WPSREAD.TXT - text file with miscellaneous Win Pelvis-n-Space information
- * WPS.EXE - Win Pelvis-n-Space program file
- * WPS.HLP - Win Pelvis-n-Space help file
- * WPS.INI - Win Pelvis-n-Space parameter file

Note: If share is installed in the user's system, Win Pelvis-n-Space will encounter an error in the uninstall process. Share will not allow a program to access a file that another program is accessing. Windows is executing WPS.EXE so the program cannot access it to delete it. The error message can be ignored and the WPS.EXE file deleted by hand.

Exit

Selecting the Exit Command from the File Menu will terminate Win Pelvis-n-Space.

xxx Control Menu

The Control Menu includes commands that enable a user to issue commands for the currently active window. This game is an MDI windows application. Therefore, the control's command will have different options based on the currently active window. To make a particular window active, the user must either click in the windows or use the window command to select the window.

For more information, the user should select the Control Menu for the particular window:

Strategic Display Window

- Scan

- Game Status

- Game Inventory

Tactical Display Window

- Launch Decoy Drone

- Order Drones Back

- Hail Supply Ship

- Dock

- Orbit

- Stop

Ship Status Display Window

- Repair

Strategic Scan Command

The Scan Command will scan the sectors around the current sector. The sectors will lose the black null indication on the button face for the scanned sectors. The sectors will indicate the contents by the color of the notches in the button. The Sector Color Code allows a user to determine the contents of a sector without entering the sector.

Strategic Game Status Command

The Game Status command will display a dialog box that contains information on the status of the current game. It will display the following information:

Level of game - level of the current game

High Score - highest score yet obtained for the game

Current Score - score of the current game

Game time - length of current game

Current location - current sector of player's ship

Location of Pelvis - if Pelvis is currently on the ship

Alien Ships - number of alien ships still remaining

Strategic Inventory

This is the inventory of all the objects the player has found in the wreckage of destroyed ships.

Tactical Release Decoy Drone Command

Decoy Drones are carried on all X63 class ships. This drone may be released at any time. The drone will travel to the opposite end of the sector, hopefully leading the alien away. The drone will have enough fuel to operate for about one minute. Only a few Decoy Drones can be carried on a ship. The number of Decoy Drones remaining is displayed on the Ship Status Display.

Tactical Order Drones back Command

The Order Attack Drones Back Command will cause all the player's attack drones to return to the ship.

Tactical Hail Supply Ship Command

The Hail supply ship command will request a supply ship to enter this sector. The message takes a while to reach the supply ship.

Tactical Dock Command

The Dock Command will dock the ship at a supply ship. The ship must be close to the supply ship to dock. Docking will restock the ship with Attack Drones and Missiles. The rate of repair will double in speed. Also, the player can only dock with a supply ship once in a sector.

Tactical Orbit Command

The Orbit command will cause the ship to orbit a planet. The ship must be close to the planet to orbit. A planet can only be orbited when no alien ships are in the sector. If there are ships in the sector, they must first be destroyed.

Tactical Stop Command

The Stop command will cause the ship to stop all movement.

Ship Status Repair Command

The Repair command is used to indicate which system the user would like repaired next. Damage control will repair the systems in a top-down order. A dialog box is displayed with all the systems. The undamaged systems are grayed. The next system to be repaired is selected. The user may select a system to be repaired next by setting the button on the dialog box.

Options Menu

The Option Menu includes commands that enable the user to control options of the game.

For more information, the user should select the Option Menu Command name:

Sound

Storyline

Bubbles

Pause

Sound Command

The Sound command will turn game sounds on or off. The state of the sound switch is saved from game to game.

Storyline Command

The Storyline command will turn the playing of the game storyline on or off. The state of the storyline switch is saved from game to game.

Bubbles Command

The Bubbles command will turn the automatic display of help bubbles off when playing a beginner level game.

Pause Command

The Pause command will pause the current game. A help button is placed on the dialog box for the user to access help.

Window Menu

The Window Menu includes commands that enable the user to control the windows of the MDI application.

For more information, the user should select the Option Menu Command name:

Cascade -- cause windows to be stacked on top of each other.

Tile -- cause windows to be fitted next to each other on the main window.

Arrange icons -- arrange iconic windows on the main window.

Windows -- select a window to become active.

? Command

The ? Command will cause informational bubbles to be displayed on all open windows explaining the window. The bubbles are a short and quick form of help. The bubbles will be erased in a short while. The ? Command can be selected again to clear the bubbles.

A game started in beginner mode will automatically have the ? Command displayed at the beginning of the game. If the Bubble option is not selected, the bubbles will not be displayed in the normal and advanced modes.

Help Menu

The Help Menu includes options that enable the user to get help for the game.

For more information, the user should select the Help Menu Command name:

Help Index

Using Help

About

Help Index Command

The Help Index command is used to invoke the Windows Help engine. It will start up with the help index for Win Pelvis-n-Space.

Using Help Command

The Using Help command will invoke the Windows Help engine. It will start up with the help for the Help engine.

About Command

The About command will display a short dialog box that displays copyright and registration information. The More key may be pressed to display a picture of the development team for this software. The Register key may be pressed to register this software.

Tactical Popup Menu

The Tactical popup menu is used to perform commands on an object in the Tactical window.

For more information, the user should select the Tactical Popup Menu Command name:

Set New Heading

Fire Pulse Lasers

Launch Missile

Launch Attack Drones

Scan

cancel this menu

Set New Heading

The Fire Lasers command is selected from the Tactical Popup Menu. The Set New Heading command is used to move the player's ship to a new location.

Fire Pulse Lasers

The Fire Pulse Lasers command is selected from the Tactical Popup Menu. The player's ship will fire its lasers at the alien ship that is nearest to the cursor. The lasers require a short time to recharge. The lasers may be fired as many times as desired. An alien ship must be within a short distance from the cursor before the lasers can be fired.

Launch Missiles

The Launch Missiles command is selected from the Tactical Popup Menu. The player's ship will launch a missile at the alien ship that is nearest to the cursor. The player only has a limited number of missiles. They can be restocked by docking with a supply ship.

Launch Attack Drones

The Launch Attack Drone command is selected from the Tactical Popup Menu. The player's ship will launch an attack drone at the alien ship that is nearest to the cursor. The player has a limited number of attack drones. They can be restocked by docking with a supply ship.

Scan

The Scan command is selected from the Tactical Popup Menu. It is used to scan objects in the sector. An object must be within a short distance from the cursor to be scanned. A dialog box will be displayed with information about the object and its status.

cancel this menu

The cancel command can be used to cancel the popup menu. The user can also press the Esc key to cancel the popup menu.

Keyboard

Keyboard commands are shortcuts to the menu options. All menu options that have keyboard shortcuts have the shortcut key listed next to the menu command. The following is an example:

Scan 'C' - Scan is the menu command. Pressing the 'C' key will invoke the Scan command.

Following are the keyboard shortcut commands:

Menu Command	Short-cut Key
<u>Strategic Scan</u>	'C'
<u>Strategic Game Status</u>	'G'
<u>Strategic Inventory</u>	'I'
<u>Tactical Launch Decoy Drone</u>	'Y'
<u>Tactical Order Drones Back</u>	'B'
<u>Tactical Hail</u>	'H'
<u>Tactical Dock</u>	'D'
<u>Tactical Orbit</u>	'O'
<u>Tactical Stop</u>	'P'
<u>Tactical Popup Set New Heading</u>	'N'
<u>Tactical Popup Fire Pulse Lasers</u>	'L'
<u>Tactical Popup Launch Missiles</u>	'M'
<u>Tactical Popup Launch Attack Drone</u>	'A'
<u>Tactical Popup Scan</u>	'S'
<u>Ship Status Repair</u>	'R'

Mouse

The mouse has a few special functions in Win Pelvis-n-Space. The functions are different for each window. Following are the mouse functions for each window:

Strategic Window

- * The left mouse button is used to select the sector the player wishes to jump into. The cursor will change into an outline of the ship when a jump is allowed. The sector button is single-clicked to activate the hyperdrive engines. Only one sectors can be jumped at a time.

Tactical Window

- * The left mouse button is used to activate the Tactical Popup Menu. The player moves the cursor on top of the object to be processed. Also, press the left mouse button on the location to move the ship, then select the "Set New Heading" command.

Ship Status Window

- * The left mouse button is used to display the Repair dialog box.

Win Pelvis-n-Space Definitions

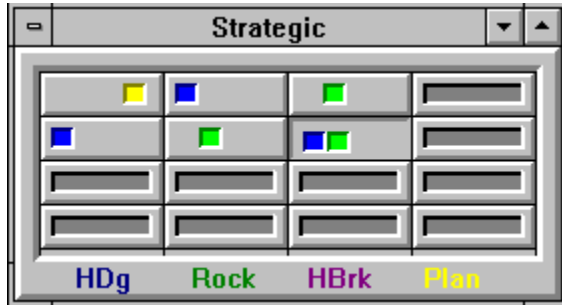
Following are the defined terms of the game:

Armor
Attack Drone
Carrier
Cruiser
Decoy Drone
Destroyer
Fighter
Galaxy
Hail
Hyperdrive
Ion Storm
Jump
Lasers
MDI
Missile
Neutron Pellet
Pulse Lasers
Scanners
Sector
Sensors
Strategic
Super Nova Burst
Supply Ship
Tactical
Thrusters
Tractor Repulsor Beam
Win Pelvis-n-Space
Wormhole

Armor

Armor is a magnetic metallic layer around a ship or fighter. It will protect the object from weapon damage for a short amount of time. It can be regenerated. After the armor is penetrated, the hull will start to become damaged.

Attack Drone



Attack drones are small electronic drones that are completely computer controlled. They are carried by other ships. Attack drones are usually sent on a mission in groups. They carry greater fire power in numbers. After a mission is complete, they will return to the ship.

Carrier

Carriers are large ships that carry fighters. They are bases for the fighters. Carriers, themselves, are almost defenseless. The fighters give the carrier a big punch.

Cruiser

Cruisers are large ships. They are the best all around ships. They carry attack drones for a long distance attack and heavy guns for short distance. It also carries decoy drones that allow it to distract enemy ships.

Decoy Drone



A Decoy Drone is very heavily loaded with electronic counter-measure equipment. This equipment is used to create a simulation of the ship that launches the drone. To any ship in the sector, the drone will appear to be the ship. The drone also has a large amount of armor to protect it while operating. The drone uses a hyperdrive engine operating on overload to achieve the level of energy needed. The ion engine will burn out in a short amount of time. The drone cannot be recovered.

Destroyer

Destroyers are small ships. They are very expendable. They have very little armor and fire power.

Fighter

Fighters are small ships with a single crew member. They are carried by other ships. Fighters are usually sent on a mission in groups. They carry greater fire power in numbers. After they complete a mission, they will return to the ship.

Galaxy

A galaxy is the known section of the universe where our Earth and the planet Paceland are located. This is also the range of the scanners. The galaxy is made up of sectors. The Strategic Display is the display of the galaxy.

Hail

Hailing a ship is another name for contacting other ships on the interstellar radio. A message takes a while to travel the wide expanses of the galaxy.

Hyperdrive Engine

A Hyperdrive Engine is used to travel around a galaxy. They function by super heating hydrogen gas until it becomes plasma. Then a magnetic field is applied and a large amount of ions are emitted. These ions are used to jump the ship to the speed of light and appear in the next sector. After a hyperdrive engine is used, it must cool down. This takes less than a minute.

Ion Storm

An ion storm is caused by certain gases reacting. These gases cause an electromagnetic reaction that will ionize an entire sector. The ionization of the sector will react with the electronics of a ship. The effect is quite powerful. It will damage anything in the sector not protected by an atmosphere.

Jump

A Jump refers to the process of going the speed of light. A Hyperdrive Engine is required to supply the large amount of energy needed for a jump to light speed.

Lasers

Lasers emit a beam of concentrated coherent light of the same wavelength. The laser beam can travel over great distances.

MDI

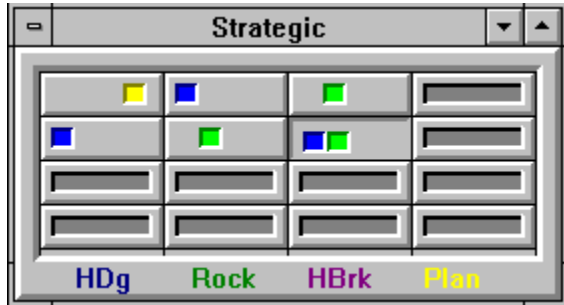
MDI stands for Multiple Document Interface. MDI windows applications have multiple windows contained within one main window. Program Manager or SysEdit are examples of MDI applications.

Missile



A missile is a self-propelled nuclear warhead. It is fast moving and very powerful. Missiles have a small amount of armor to protect them from some weapon fire. Multiple missiles should be fired at a target to ensure a kill.

Neutron Pellet



A Neutron Pellet is a pellet that is shot by a railgun at the target. The railgun accelerates the neutron pellet to near the speed of light. The neutron pellet is very dense matter. It has a guidance system to track the target. The pellet is very fast moving. When the pellet reaches its target, its mass will cause damage. No explosives are needed.

Plasma Fire

A plasma fire cannon is a weapon that uses plasma as sort of a flame-thrower. The plasma is heated to a high temperature and then ignited. The stream of burning plasma is then directed toward the target.

Pulse Lasers

Pulse Lasers emit a beam of pulsed, concentrated, coherent light of the same wavelength. The laser beam can travel over great distances. The pulsed beam is very powerful. Pulse Lasers use a capacitor to store energy. The capacitor requires time to recharge between firing.

Scanners

Scanners are a ship's long range sensing equipment. They are used to scan the surrounding sectors of a ship's current location. Once a sector is scanned, its contents are recorded in the scanner's database. This database of information is displayed on the Strategic Display. When scanners are destroyed, the record of scanned sectors is lost. The sectors must be rescanned when the scanner is repaired.

Sector

A sector is the smallest subdivision of the universe. Sectors are the tactical portion of space. The tactical display is the view of a sector. A Galaxy is made up of sectors.

Sensors

Sensors are a ship's short range sensing equipment. They are used to scan objects within a sector. They can be used to scan ships. The sensors also aid the fire control computers to lock-on to a target. When the sensors are damaged, the effectiveness of weapons is reduced by 50%.

Sonic Blaster

A sonic blaster is a weapon that uses photon waves generated from high density sound waves. These sound waves pass through a dense magnetic field that excite photons. The photons are released with a great deal of energy.

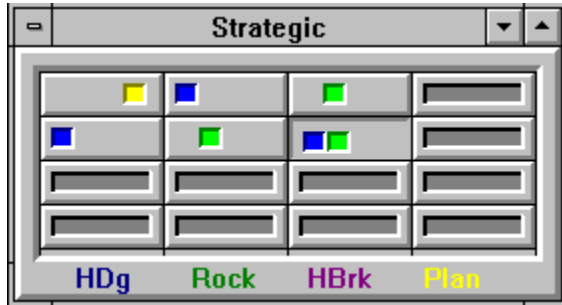
Strategic

Strategic is a term used to define an overall long range look at a situation or problem. In Win Pelvis-n-Space the Strategic Display window shows the sectors of the galaxy. From this display, the player can plan the conquest of the sectors.

Super Nova Burst

A super nova is an unstable neutron star. The neutron star contracts upon itself. The force of the compression will cause the star to explode. The energy burst is quite powerful. It will damage anything in the sector not protected by an atmosphere.

Supply Ship



A supply ship is a fast ship that carries supplies for ships. The ship is not maneuverable inside a sector. The ship will be stocked with attack drones and missiles. When a ship docks with a supply ship, the supplies are transferred. A supply ship can only be docked once in a sector. A supply ship can only be hailed a limited number of times in a game. Also, the supply ship will not come if alien ships are in the sector.

Tactical

Tactical is a term used to define a close-up or short-range look at a situation or problem. In Win Pelvis-n-Space, the Tactical Display window shows the current sector where the player's ship is located. This is where the player does most of the "work". The alien ships are engaged here. The player docks with derelicts to restock and to take a rest.

Thrusters

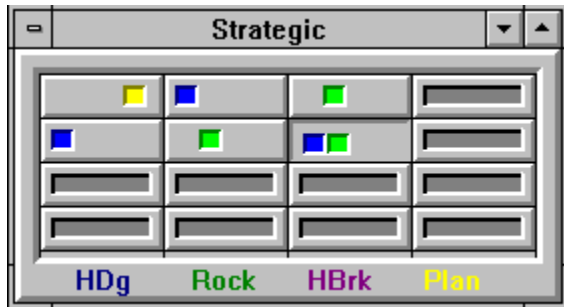
Thrusters are a chemical engine. They use a chemical reaction from hydrogen and oxygen. The stream produced moves the ship. Thrusters are used to move around sectors.

Tractor Repulsor Beam

A Tractor Repulsor Beam is a very advanced form of a Tractor Beam. This weapon can switch from pull to push at a microsecond rate. This will virtually shake the target apart. It has a very short range.

Win Pelvis-n-Space

Win Pelvis-n-Space is a copyrighted game created by BFM Software.



Copyright © BFM Software 1993

Copyright © Brett McDonald 1993

Wormhole

A wormhole is a time-space inter-dimensional connection. It will instantly transport an object great distances. Wormholes are undetectable until they are encountered, and then it is too late! They will move a ship many sectors. Their appearance is random. Wormholes do not cause damage to the ship.

