



## What is Tel-Me Upgrade?

The Tel-Me Upgrade utility allows you to ensure that your Tel-Me installation is fully up-to-date, complete and un-corrupted - All via your normal Tel-Me communication link.

### **Tel-Me Upgrade can:**

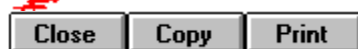
- Check that your current Tel-Me installation is the latest available version and upgrade if necessary.
- Check for missing files within your current Tel-Me installation and replace any absent items.
- Check each Tel-Me file for corruption or virus damage and repair if necessary.

If a new release of the Tel-Me application exists and a full download is required, the Tel-Me Upgrade process may take up to 3 hours (dependent on which communications device is used).

If only a patch file or single product upgrade is required, then the process will only take a few minutes.

### **See also**

[Using Tel-Me Upgrade](#)



## Upgrade Contents

[What is Tel-Me Upgrade?](#)

[Using Tel-Me Upgrade](#)

[Upgrade Menus and Toolbar](#)

How To...

[Verify an Application](#)



[Upgrade an Application](#)




## Using Tel-Me Upgrade

After Tel-Me Upgrade is launched, you are requested to enter your standard Tel-Me password that matches the Tel-Me ID displayed in the opening dialog. When you do this and click on the OK button an enquiry is made to validate the password and check which applications are currently available for upgrading. The available upgrade products are then displayed in the [Active Applications](#) dialog.

**From the Active Applications dialog you can select the required application and choose to:**

-  Upgrade your system to the latest version of the selected application, or
-  Verify your system against the selected application.

If the Active Applications dialog is not displayed, you can select it by:

- Clicking on the  button from the toolbar, or
- Selecting the Upgrade/Verify... option from the Options menu.



## Verifying Applications

**To verify a Tel-Me application stored on your system:**

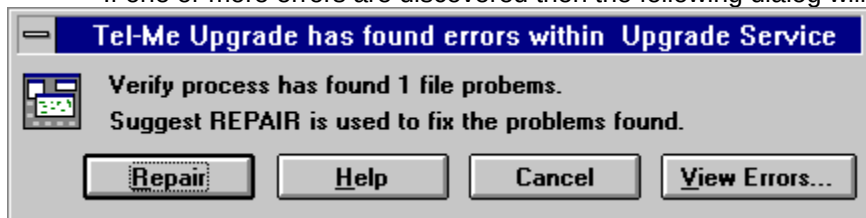
1. Select the required application from the list within the Active Applications dialog.
2. Click on the Verify... button.

The reaction of the system will depend on the files stored on your system:

- If the required application database files are stored locally, the verification process will commence immediately.
- If the required application database files cannot be located then an enquiry will be made and the necessary files downloaded prior to beginning the verification process.

The verification process will produce one of two results:

- If no corrupted or missing files are discovered then a message will display to confirm.
- If one or more errors are discovered then the following dialog will be displayed:



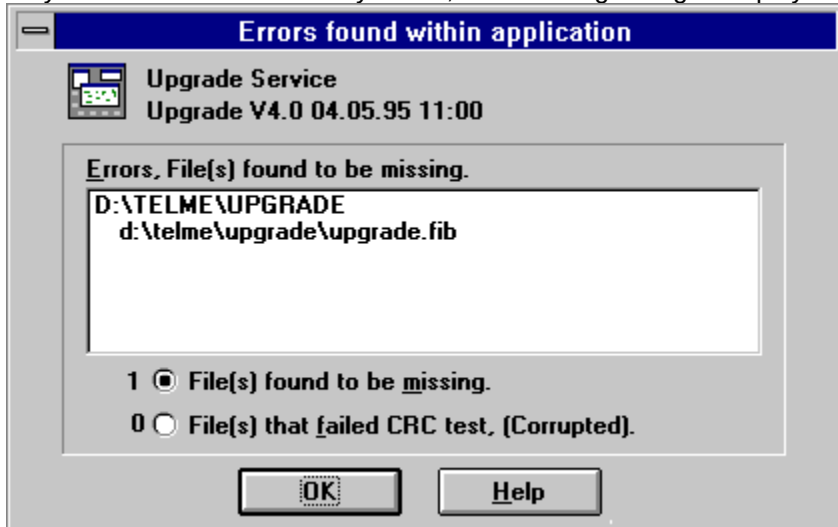
Click on the required item for more information.

**Return to Previous** ◀



## Verify Errors Dialog

If you select to view the verify errors, the following dialog is displayed:



Click on the required item for more information.





## Upgrading Applications

**To upgrade a Tel-Me application stored on your system:**

1. Select the required application from the list within the Active Applications dialog.
2. Click on the Upgrade... button.

The system will begin the upgrade process by initiating an enquiry and calculating the time needed to download the necessary file across the communication medium being used. When the completion time has been estimated, the full download procedure will commence. You can halt the download process at any time by clicking on the **Stop** button.

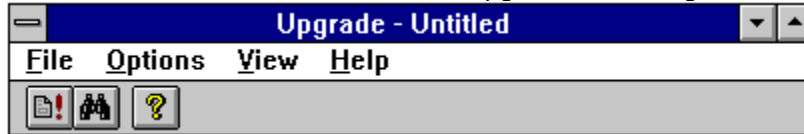
When all necessary files have been received, the system will build the upgrade application, perform a verification and add the new program icon(s) within a new Program Manager group. Your old version of the upgraded application is not overwritten and can be used as normal or deleted if required.





## Upgrade Menus and Toolbar

The menus and toolbar within Tel-Me Upgrade are arranged as follows:



Click on the required item for more information.

## **The Download Process**

Files are downloaded in a series compressed self contained blocks that are joined together on your system after the communication stage is completed. This method means that download time is cut to a minimum and also offers a certain degree of resilience against communication failures. Thus if the link fails, only the current block will be lost. The system will then automatically re-establish the link and continue from the current position.



**File**

**Exit** Terminates any open communication links and exits from the Upgrade utility.

## Options

**Upgrade / Verify...** Displays the Active Applications dialog so that you can select which applications you wish to upgrade/verify.

**Scan for applications...** Searches your system for Tel-Me applications that are suitable for upgrading.

## **View**

**Toolbar**   Toggles the display of the Upgrade toolbar.

**Status Bar**   Toggles the display of the Upgrade Status Bar at the foot of the screen.

## **Help**

**Index** Displays the contents and first page of this help program.

**Using Help** Displays help about using help.

**About Upgrade...** Provides copyright and version details for the current version of Tel-Me Upgrade.

## **Upgrade/Verify Button**

Displays the Active Applications dialog so that you can select which applications you wish to upgrade/verify.

## **Scan for Applications Button**

Searches your system for Tel-Me applications that are suitable for upgrading.

## **Help**

Displays the contents and first page of this help program.

## **Help**

Displays the contents and first page of this help program.



**OK**

Exits from the dialog and accepts any changes made.

**Cancel**

Exits from the dialog and discards any changes made.

## **Applications List**

Displays all applications that are available for use in the upgrade process.

## **Applications List**

Displays all applications that are available for use in the verify process.

## **File List Area**

This area lists all files that were discovered missing or corrupted during the verify operation. The setting of the radio buttons below determines which file list is displayed.

### **Missing Files Radio Button**

Selecting this option causes the file list area above to display all files that were discovered missing during the verify operation.

### **Corrupted Files Radio Button**

Selecting this option causes the file list area above to display all files that were discovered corrupted during the verify operation.

**Stop**

Halts the verify process and exits from the dialog without making any changes to the stored application files.



## **Repair**

Rectifies the missing or damaged application files that were discovered during the verify operation.

