



What is Journey Planner?

Journey Planner allows you to find the most suitable road route between any two selected locations. Using constantly updated AA information, Journey Planner not only calculates the best route to take but can also warn you of the following five types of hazards:

- Scheduled roadworks
- Traffic accidents and other hold-ups
- Adverse weather conditions
- Event causing potential delays
- Other miscellaneous hazards

The resulting information can be viewed (and printed) as either road-by-road text instructions or as a colour map.

See also

[Making a Journey Planner Enquiry](#)

[Journey Planner Response](#)

[Using the AA RoadWatch Feature](#)

[Using the Ordnance Survey Map Feature](#)

[Modifying Your Request for Information](#)

[Close](#)[Copy](#)[Print](#)

Journey Planner Contents

[What is Journey Planner?](#)[Making a Journey Planner Enquiry](#)[Journey Planner Response](#)[Using Route Text Instructions](#)[Using the Map](#)[Using the AA RoadWatch Feature](#)[Using the Ordnance Survey Map Feature](#)[Modifying Your Request for Information](#)[Setting Preferences](#)[Setting Route Options](#)[Enquiry Charges](#)[Journey Planner Menus and Toolbar](#)

General Information about:

[The Product Area](#)[The Input Area](#)[The Library Area](#)[The Extended Information Screen](#)[RETURN TO MAIN CONTENTS](#)



Journey Planner Response

When the response is received Journey Planner will first show a basic map representation of the journey within the [Product Area](#) window. To view the full map and/or text instructions you need to transfer to the [Extended Information Screen](#).

[Transferring to and from the Extended Information Screen.](#)

Journey Planner can display the results as either a colour map or as a list of text instructions for the journey. You can select which method of viewing is initially displayed using the Preferences dialog box located in the Options menu of the Journey Planner Product Area.

See also

[Using Route Text Instructions](#)

[Changing the Route Text Detail Level](#)

[Using the Map](#)

[Using the Ordnance Survey Map Feature](#)

[Journey Planner Menus and Toolbar](#)

[Modifying Your Request for Information](#)



Using Route Text Instructions

When you opt to view text instructions, Journey Planner will break the journey up into a series of reference points, such as road junctions and landmarks. Using these instructions you can then navigate from point to point until you reach your destination.

The text list has three columns:

- The first column (**Acc. Miles**) shows the accumulated mileage at each reference point.
- The second column (**Dist. Miles**) shows the distance to the next reference point.
- The third column (**Directions**) provides a description of the reference point and also any changes to be made at junctions.

You can change the number of reference points in a text list by selecting the Summary Text/Full Text option from the Detail menu within the Extended Information Screen.

See also

[Changing the Route Text Detail Level](#)

[Setting Route Text Fonts](#)

[Using the AA RoadWatch Feature](#)

[Using the Ordnance Survey Map Feature](#)

[Modifying Your Request for Information](#)

[Setting Route Options](#)



Using the Map

When you opt to [view the map](#), Journey Planner will create a colour map that clearly shows the suggested route. Using the map you can gain a clear overall view of the complete journey.

You can also:

- [Zoom In](#), [Zoom Out](#) or [Zoom to show the whole route](#) to investigate any particular sections in more detail.
- [Adjust the Detail](#) shown in any view of the map.
- [Move around](#) in all directions of a zoomed map as required.
- [View details](#) about any road or junction on the selected route.

See also

[Using the AA RoadWatch Feature](#)

[Using the Ordnance Survey Map Feature](#)

[Modifying Your Request for Information](#)

Using the AA RoadWatch Feature

In addition to the route information, you can also opt to check the chosen route for known hazards by accessing the constantly updated AA RoadWatch database. This feature will add hazard symbols to the map and also create a list of amended text instructions.

Making an AA RoadWatch Enquiry

Road hazards are grouped into five categories and are represented by the following symbols:



Scheduled roadworks



Traffic accidents and other hold-ups



Adverse weather conditions



Events causing potential delays



Other miscellaneous hazards



This icon will be displayed on the map if more than one type of hazard occurs in a particular location.


See also

[Viewing Hazard Details](#)



Viewing Hazard Details

You can view hazard details in two ways:

1. As a list of text route instructions appended with detailed AA RoadWatch hazard information by pressing clicking on the  button (or by selecting the AA RoadWatch option from the Views menu).
2. On the map by pointing to the required icon and clicking the left mouse button. An information box will appear with summarised information about the hazard.

If the selected icon represents more than one hazard, separate icons will be given within the information panel.

See also

[Modifying Your Request for Information](#)


[Using the Ordnance Survey Map Feature](#)




Using the Ordnance Survey Map Feature

In addition to providing main-road route information, Journey Planner can also provide you with a detailed street map of your start and/or destination locations. So if you need to find your way out of a big city, or your way into a specific town location, you can get all the information you need from Journey Planner.

To make an OS Road Map enquiry:

1. Click on the  button, or select the OS Road Map option from the Enquiry menu.
2. From the resulting dialog box, select the required location and click on the Send button.
3. When the enquiry information is received, Tel-Me will move to the Mapper product so that you can view the map. Refer to the Mapper section of this help for more information.
4. When you exit from the Mapper product, you will be automatically returned to Journey Planner.

If you wish to return to the OS Road Map at any time, click on the  button, or select the OS Road Map option from the Views menu.

See also

[Making a Journey Planner Enquiry](#)

[Journey Planner Response](#)

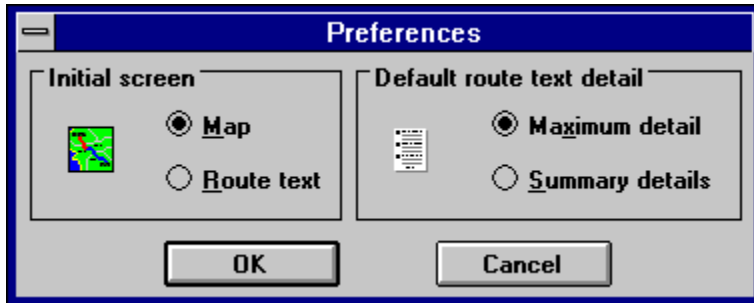
[Using the AA RoadWatch Feature](#)

[Modifying Your Request for Information](#)



Setting Preferences

This dialog box allows you to select whether Journey Planner initially displays a route as text or as a map within the Extended Information Screen. The level of detail initially shown can also be selected here. To display this dialog box, select the Preferences option from the Options menu within the Product Area.



Click on the required item for more information

See also

[Making a Journey Planner Enquiry](#)

[Journey Planner Response](#)

[Using the AA RoadWatch Feature](#)

[Using the Ordnance Survey Map Feature](#)

[Modifying Your Request for Information](#)

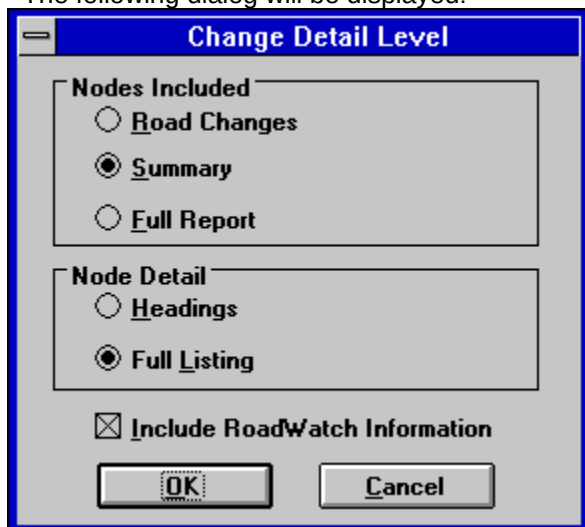


Changing the Route Text Detail Level

You can alter the level of detail presented in the route text instructions by selecting the Change Detail Level dialog. To do this, either:

- Click the Change Detail Level button in the Route Text screen, or
- Select the Change Detail Level option from the Detail menu.

The following dialog will be displayed:



Click on the required item for more information.

See also

[Using the AA RoadWatch Feature](#)


[Using the Ordnance Survey Map Feature](#)

Setting Route Text Fonts

To select the font type, style and size used for text lists, select the Change Font option from the Options menu within the Extended Information Screen. A standard Windows font selection dialog box will be displayed.

Making an AA RoadWatch Enquiry

You can initiate an AA RoadWatch enquiry in one of three ways:

1. Click on the Include AA RoadWatch Information while making the initial enquiry from the Product Area.
2. Click on the  button.
3. Select the AA RoadWatch option from the Enquiry menu.

In either case, Journey Planner will send an enquiry and display the results on the map as well as providing an AA RoadWatch route text list.

Highlight


Using the up/down arrow keys, move the highlight bar up or down the list of locations until it covers the required one. Press the TAB key to select the highlighted location and move to the next field.

Reference

Anything typed in a reference field is used to identify the enquiry in the Library area. If the field is left blank, a sensible default is created from the rest of the enquiry. The Reference field has no effect on the search processing.

Selecting Text Instructions

You can select to view text instructions in three ways:


- By clicking on the  button from the Journey Planner toolbar.
- By selecting the Text option from the Journey Planner Views menu.
- By setting the Text option as a default via the Preferences dialog box from the Journey Planner Product Area.

Summary and Full Text

- When Summary Text is selected, only those reference points that require road or direction changes to be made will be displayed.
- When Full Text is selected, all reference points will be displayed in the text list.


Selecting the Map

You can select to view the map in three ways:

- By clicking on the  button from the Journey Planner toolbar.
- By selecting the Map option from the Journey Planner Views menu.
- By setting the Map option as a default via the Preferences dialog box from the Journey Planner Product Area.


Zooming In

You can zoom-in on an area of the map in three ways:

- By clicking on the  button from the Journey Planner toolbar and then dragging the mouse across the area that you wish to see magnified.
- By selecting the In option from the Journey Planner Zoom menu.
- By holding down the left mouse button and dragging a box over the area to be viewed. When you release the mouse button, the map will zoom-in on the selected area.


Zooming Out to the Next Level

You can zoom-out to the next level of magnification in two ways:

- By clicking on the  button from the Journey Planner toolbar.
- By selecting the Out option from the Journey Planner Zoom menu.

Zooming In/Out to Show the Whole Route

You can zoom in/out to show the whole of the route as large as possible in two ways:

- By clicking on the  button from the Journey Planner toolbar.
- By selecting the Max option from the Journey Planner Zoom menu.

Map Preference Option

When this option is selected, the Extended Information Screen will display the map as standard. You can then change to the route text instructions using the menus or toolbar buttons if required.

Text Preference Option

When this option is selected, the Extended Information Screen will display the route text instructions as standard. You can then change to the map using the menus or toolbar buttons if required.

Maximum Detail Option


When this option is selected, the Extended Information Screen will display the maximum level of detail within the map/route text instructions as standard. You can then alter the level of detail using the menus or toolbar buttons if required.

Summary Details Option


When this option is selected, the Extended Information Screen will display a summary level of detail within the map/route text instructions as standard. You can then alter the level of detail using the menus or toolbar buttons if required.

Adjusting the Level of Detail

You can increase or decrease the level of surrounding road and location details on a given map view using the following controls:

More Roads: Click on , or select **More Roads** from the Detail menu.


Fewer Roads: Click on , or select **Fewer Roads** from the Detail menu.


More Places: Click on , or select **More Places** from the Detail menu.

Fewer Places: Click on , or select **Fewer Places** from the Detail menu.

Moving Around the Map

You can move around within a zoomed map view using the following controls:

Left: Click on  or select **Left** from the Move menu.

Right: Click on  or select **Right** from the Move menu.

Up: Click on  or select **Up** from the Move menu.

Down: Click on  or select **Down** from the Move menu.

Viewing Details about Roads and Junctions

You can view details about any road or junction on the selected route by clicking the left mouse button on the required item. Journey Planner will display an information box giving the name of the road and/or junction; the distances to the last and next nodes (reference points); and a text direction to the next node. Click on Close to remove the box.

Additionally, if AA RoadWatch icons are displayed on the map, clicking on these will display further information in the same way.

OK

Exits from the dialog box and saves any changes made.

Cancel

Exits from the dialog box and discards any changes made.

Start

Enter the village, town or city from which your journey will begin.

Destination

Enter the village, town or city where your journey will end.

Nodes Included

Road Changes When this option is selected, the text report will describe road changes only.

Summary When this option is selected, the text report will show all required road changes, other major road junctions and details such as Service Areas on motorways.

Full Report Selecting this option provides a full report showing all encountered junctions.

Node Detail

Headings When this option is selected the report will show a concise one line description for each displayed node.

Full Listing When this option is selected the report will provide further descriptions, where necessary, of the action required at each displayed node.

Include RoadWatch Information

When this option is checked, any relevant AA RoadWatch details will be included within the text instructions.

