



CD Wizzard Help Index

How to:



Use Main Window



Use Small Window



Use Icon Window



Use Registration Dialog



Use Disc Maintenance Dialog



Use Edit Disc Data Dialog



Use Copy Tracks Dialog



Use Export Options Dialog



Use Program Tracks Dialog



Use Track Playlist Dialog



Use Options Dialog

General Information



Copyright and Licensing



Registration



Technical Support



Common Problems



CD-ROM Installation

Reference Information



Menu Commands



Keyboard



Mouse



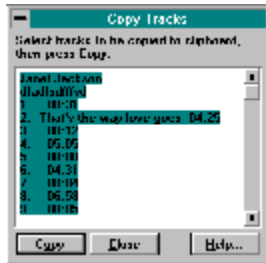
Term Definitions

How to - how_

Copy Tracks Dialog

This is a description of the Copy Tracks Dialog. This dialog is used to copy disc information such as disc name, artist, label, category, comments, and track names to the windows clipboard. The information can then be pasted into any windows application such as Notepad or MS Word for Windows.

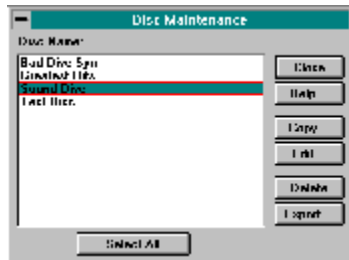
To get information on a function or area, click on it in the graphic below.



Disc Maintenance Dialog

This is a description of the Disc Maintenance Dialog. This dialog displays all CDs that have been entered into the database for CD Wizzard.

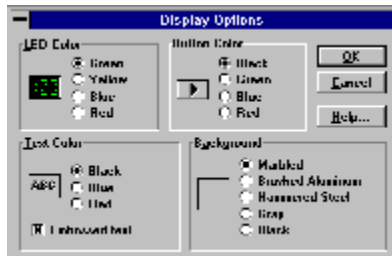
To get information on a function or area, click on it in the graphic below.



Display Options Dialog

This is a description of the Display Options Dialog. This is the dialog that is used to configure the options that effect the look and feel of the main window.

To get information on a function or area, click on it in the graphic below.



Edit Disc Data Dialog

This is a description of the Edit Disc Data Dialog. This dialog displays all information about a particular CD. This dialog can be used to enter the disc name and track names.

To get information on a function or area, click on it in the graphic below.

Edit Disc Data

Disc Data

Disc Name: Greatest Hits

Artist: Eagles

Label: A&M

Catalogue: 1 Disc, 11 Tracks

Comments: This is one of my favo

Disc Length: 43:07

Tracks:

Track	Duration
1 Take It Easy	01:21
2 Witchy Women	04:11
3 Lyn Ego	06:23
4 Already Gone	04:12
5 Desperado	03:34

Track Playing Mode:

☒ Normal - Play tracks in original order

☐ Shuffle - Play all tracks in random order

☐ Repeat - Play only tracks selected

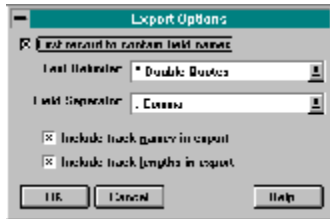
Program Tracks

Export Options Dialog

This is a description of the Export Options Dialog. This dialog displays the options for an export of disc data.

By selecting First record to contain field names, Text Delimiter of Double Quotes, and Field Separator of Comma most databases and word processors will handle the exported file by default.

To get information on a function or area, click on it in the graphic below.



Icon Window

This is a description of the CD Wizzard Icon. The icon is updated with the CD player's current status.

The right mouse button may be pressed on the icon to toggle PLAY or PAUSE.

To get information on a function or area, click on it in the graphic below.



Layout Options Dialog

This is a description of the Layout Options Dialog. This is the dialog that is used to configure the options that effect the layout and placement of parts on the main window.

To get information on a function or area, click on it in the graphic below.



Main Window

This is a description of the CD Wizzard Window. The window is updated with the CD player's current status.

To get information on a function or area, click on it in the graphic below.



Options

CD Wizzard is very customizable. The user has many options that can be set to his/her preference. The options are of the following categories:



Display Options - options to configure the main window's look and feel.



Layout Options - options to configure the main window's layout.



Playback Options - options to configure the playing of CDs.

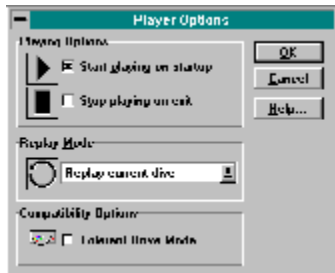


System Options - options to configure the user's CD-ROM Drive and other system settings.

Player Options Dialog

This is a description of the Player Options Dialog. This is the dialog that is used to configure the playing mode for CDs.

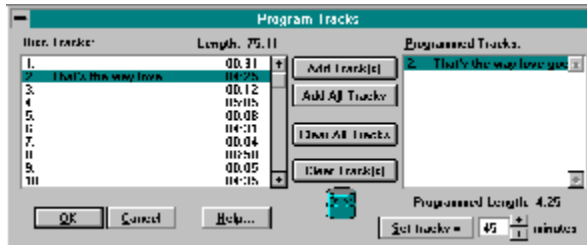
To get information on a function or area, click on it in the graphic below.



Program Tracks Dialog

This is a description of the Program Tracks Dialog. This is the dialog that is used to select the tracks and order of play in programmed mode. The tracks can be dragged and dropped from the track list to the programmed tracks listboxes.

To get information on a function or area, click on it in the graphic below.



Registration Dialog

This is a description of the Registration Dialog. This is the dialog that is used to register this software product.

To get information on a function or area, click on it in the graphic below.

The screenshot shows a Windows-style dialog box titled "CU Wizard - Release 0.00 - Registration". It contains several input fields and buttons. At the top, there are three labels: "First:", "Initial:", and "Last Name:". Below "First:" is a text box containing "Brett". Below "Initial:" is an empty text box. Below "Last Name:" is a text box containing "McDonald". Below these is a "Key:" label with the value "11379" and a "Password:" label with an empty text box. Below the password field is a copyright notice: "Copyright © 1994 by Software and Brett McDonald 1994 All rights reserved". Below this is a paragraph of instructions: "Enter your name in the above fields. Then select your registration method below." Below the instructions are three buttons: "Check or Manually Enter Registration", "Download Registration", and "Phone Credit Card Registration". Below these buttons is another paragraph of instructions: "When you receive the Password, enter it in the password field. Then press the Register button to complete your registration." At the bottom of the dialog are three buttons: "Register", "Cancel", and "Help".

CU Wizard - Release 0.00 - Registration

First: Brett Initial: Last Name: McDonald

Key: 11379 Password:

Copyright © 1994 by Software and Brett McDonald 1994 All rights reserved

Enter your name in the above fields. Then select your registration method below.

Check or Manually Enter Registration
Download Registration
Phone Credit Card Registration

When you receive the Password, enter it in the password field. Then press the Register button to complete your registration.

Register Cancel Help

Small Window

This is a description of the CD Wizzard Small Window. The window is updated with the CD player's current status.

The small window will remember its current screen location from execution to execution. Also, if CD Wizzard is exited in small mode, CD Wizzard will restart in small mode.

To get information on a function or area, click on it in the graphic below.



System Options Dialog

This is a description of the System Options Dialog. This is the dialog that is used to configure parts of your computer system for use with CD Wizzard.

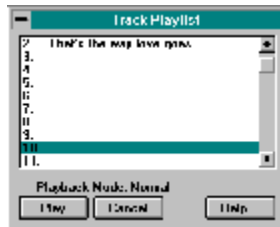
To get information on a function or area, click on it in the graphic below.



Track Playlist Dialog

This is a description of the Track Playlist Dialog. This is the dialog that is used to select a track to play from the playlist. The user selects the track and double clicks or presses the play button.

To get information on a function or area, click on it in the graphic below.



Windows - wnd_

Always on Top

This command will cause the CD Wizzard icon and the small mode window to have the Always on Top attribute. This will display the icon or small window on top of all other windows, even if it is not the currently selected application.

Artist

This is the artist of the disc currently being played. This was entered from the Edit Disc Data Dialog.

Artist Field

This field is used to enter the artist of the disc.

Background

These radio buttons allow the user to select the background for the main window. The different backgrounds are marbled, brushed aluminum, hammered steel, gray, and black. When a background is selected, a small sample is displayed. When black is selected, the entire display is switched to black including the button backgrounds.

Button Color

These radio buttons allow the user to select the color of the buttons on the main window. The different colors are **black**, **green**, **blue**, and **red**. When a color is selected a preview of the button color is displayed. When the button color is black and the background color is black, the button color will be set to white so, the buttons can be seen.

Caption Bar

The caption bar of the window may be used to move the window around the screen. To do this, the user must click the left mouse button and then drag the window to a new location. Release the mouse button when the desired location is reached.

Category

The category dropdown listbox allows the user to select a category for the disc. Many categories are available such as Rap, Classic Rock and Vocalists to list a few.

CD-ROM Input

These two radio buttons select the device that CD Wizzard uses to control the volume of the audio playback. The two devices follow:



CD Audio Port - this is the internal port on the sound card, usually used for internal CD-ROM drives.



Line-In Port - this is the input jack on the back of the sound card, usually used for external CD-ROM drives but, sometimes for internal drives with a line-out connector.

Please refer to your CD-ROM drive and Sound card documentation for further details on which type of setup you have.

Note: You must have a sound card for CD Wizzard to control the volume of the CD audio.

Comments

The comments field is a free-form area that can be used to enter any information about the CD. It will be saved and redisplayed when that CD is edited. This area may contain a few lines of text about the disc.

Data

These fields are the user's return address data. The user must enter all information needed so that mail can be delivered to the correct address.

Disc Length

This is the total length of the current disc in minutes and seconds.

Disc Name List

This is the list of all disc names that have been entered into the disc database. The user will select a disc name and then press the Edit or Delete button. Double clicking a disc name will edit that disc's data.

Disc Name

This is the name of the disc currently being played. This was entered from the Edit Disc Data Dialog.

Disc Name Field

This field is used to enter the name of the disc.

Display Output Meter Window

Selecting this checkbox will cause the Output Meter to be displayed on the Main Window.

Embossed Text

Selecting this checkbox will cause all text in the disc name, track name and status bar to be embossed or have a sunken 3-D effect.

Field Separator

The Field Separator dropdown listbox lists the different characters that can be used to separate fields in the exported file. The separator may be a comma (,), space (), tab character, or carriage return - line feed. An example of comma delimited fields is:

Field A,Field B,Field C

First record to contain field names

The First record to contain field names checkbox is used to indicate if the first record exported with contain the field names of the CD Wizzard data fields. Most databases and word processors will optionally use the first record as the field names. However, this feature allows automatic creation of a database or mail merge word processing document.

Include track names in export

The Include track names in export checkbox is used to indicate if the track names are to be included in the exported file.

Include track lengths in export

The Include track lengths in export checkbox is used to indicate if the track lengths are to be included in the exported file.

Label

The label edit box allows the user to enter the label or company that produced the CD.

LED Color

These radio buttons allow the user to select the color of the LED Displays on the main window. The different colors are green, yellow, blue, and red. When a color is selected, a preview of the LED color is displayed.

Minutes

This is the number of minutes that may be used as the length of time to be programmed. A number between 1-99 must be entered. The spin box on the right may also be used to increase or decrease the number of minutes. After the number of minutes is entered, press the Set Tracks button to program the desired track length in minutes.

Mixer Name

This is the name of the mixer program for the user's sound card. This field is not editable. The Browse button should be used to select the mixer program. The Clear button can be used to clear the field.

Normal Mode

The normal mode of playback will play all tracks of the CD in the original order.

Output Meter Display

This is the display of the Output Meter. The display has an automatic level control that adjusts the display based on input level. If the display is just a line, then most likely CD input is not selected in the mixer. The user must press the Mixer Button and select CD input.

Playback Mode

This is the current playback mode of CD Wizzard. It can be Normal, Shuffle or Programmed.

Program Mode

The program mode of playback will play all tracks of the CD selected by the user in the Program Tracks dialog.

Programmed Length

This is the total length, in minutes and seconds, of the currently selected tracks that have been added to the Programmed Tracks listbox.

Programmed Tracks

This is a listbox that lists all the tracks that have been programmed by the user. If a track is selected, the user may press the Clear Track(S) button to remove that track. A track may be clicked on and dragged to the trashcan icon to be removed. A track may also be removed by double clicking the track.

Replay Mode

This is the replay mode of CD Wizzard. The dropdown listbox contains the options No Replay - do not replay at all, Replay Current Track - replay the current track continuously, and Replay Current Disc - replay the current disc continuously.

Replay Mode Display

This is the current repeat mode. The three modes are none, track and disc. Track and disc will repeat either the current track or disc. The user clicks on the Repeat Mode to toggle the next mode. It can also be changed from the Player Options Dialog.

Select CD-ROM Drive

This allows users who have more than one CD-ROM drive to select a drive. All the drives attached to the system will be displayed. The user must select the drive for CD Wizzard in order to use this.

Shuffle Mode

The shuffle mode of playback will play all tracks of the CD in a random order. Each time the disc is replayed, a different order will be selected.

Start playing on startup

This checkbox indicates whether CD Wizzard will automatically start playing a CD when it is inserted into the CD-ROM drive. If selected, it will cause CD Wizzard to start playing when CD Wizzard is first executed. This allows CD Wizzard to be placed in a user's Startup Group in Program Manager and have an audio CD begin playing at Windows startup.

Status Bar Display

This is the status bar display. It will display the current status of the CD player such as playing, stopped, etc. It will also display short help messages when the mouse cursor is dragged over certain areas on the window or on menu items, if the user has the Status Bar Help Text option turned on in the Layout Options..

Status Bar Help Text

When selected, help messages are displayed on the status bar as the mouse is dragged over different areas of the screen. These messages explain about the various areas of the main window that can be clicked on.

Stop playing on exit

This checkbox indicates whether CD Wizzard should stop playing on exit from the program.

Text Color

These radio buttons allow the user to select the color of the text in the Disc Name, Track Name, and Status Bar areas on the main window. The color choices are **black**, **blue**, and **red**. When a color is selected, a preview of the text color is displayed.

The embossed text checkbox indicates if the text should be embossed, meaning that it would have a 3-D inset. When the option is changed, a preview of the text is displayed. When the text color is black, the background color is black and the text is not embossed, the text color will be set to white so, the text can be seen.

Text Delimiter

The Text Delimiter dropdown listbox lists the different characters that can be used to indicate the start and end of fields in the exported file. The delimiter may be double quotes ("), single quotes ('), or none. An example of double quote delimited fields is:

Field A,Field B,Field C

Text Display

This is the text of the Disc Name, Artist or Track Name. The name to be displayed is selected from the Layout Options Dialog.

Small Mode Text Display

This combobox lists the three choices for the Text Display on the Small Mode Window. Disc Name, Artist and Track Name are the choices.

Time Display

This is the time mode display of CD Wizzard. This drop down listbox contains the time display modes for the main window. The display is in minutes and seconds. The user can select between the four modes Time Elapsed in Track, Time Remaining in Track, Time Elapsed in Disc and Time Remaining in Disc.

Time Mode Display

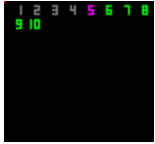
This is the current time mode. The four possible modes are Track Elapsed, Track Remaining, Disc Elapsed and Disc Remaining. The user clicks on the Time Mode to toggle the next mode. It can also be changed from the Player Options Dialog.

Track Bar Chart

This is a bar chart showing the amount of the track that has been played. On the main window, but not on the icon window, the user can click the left mouse button on the bar chart to reposition to that point of the track.

Track Box Display

This is the display of the tracks on the disc. Any track may be selected by clicking the left mouse button on the track number. The selected track will begin to play.



All of the tracks will start out having the LED Color selected in the Display Options Dialog. The track that is currently being played will be **purple**. Tracks that have already been played will be **gray**.

Note: The Track Box Display is not shown when playing in Programmed Mode.

Track List

This is a listbox with information on the tracks of the current disc. The listbox contains the track number, name and length for each track. A user may click on a track and drag it to the Programmed Tracks listbox to program that track. A user may also double click a track to add it to the bottom of the Programmed Tracks listbox.

Track Name

This is the name of the track currently being played. This was entered from the Edit Disc Data Dialog.

Track Number

This is the display of the current track that is being played.

Track Play List

This listbox contains the order of the tracks currently selected from the disc. This order will be sequential for Normal mode, random for Shuffled mode and chosen order for Programmed mode.

Track Play List Edit Control

This edit control contains the order of the tracks currently selected for the disc. This order will be sequential for Normal and Shuffled mode and in a chosen order for Programmed mode. It will also contain the Disc Name and Comments for the disc.

The user can select any part of the edit control and press the Copy button to copy the text to the windows clipboard.

Track Scrollbar

This is the scrollbar that controls the scrolling of the Track Name entry fields.

Track Time

This is the display of the current time position of the track that is being played.

Trashcan

This is a trashcan icon. It can be used to remove tracks from the Programmed Tracks listbox. This is done by dragging the track name and dropping it on the trashcan icon.

Volume Display

This is the volume level display. The user clicks the left mouse button on the volume level to change the volume. The volume can also be controlled by the Up and Down buttons in large mode. The volume display device is set in the System Options.

User Key

This is the user key. This a user code that is built from the user's name. All letters in the name are used in the key. Different spelling and capitalization produce different keys. For example, John Doe, john doe and JOHN DOE produce different keys. The user sends the Key to BFM Software which is what the password is generated from.

User Name

This is the user name. The fields are first name, middle name, and last or surname. The name must be at least eight characters long. The name can not contain blanks. All letters in the name are used for registration, different spelling and capitalization are significant.

User Password

This is the user password. The password is sent to the user in the registration package when a user registers. This password allows the user to gain full access to the software.

Tolerant Drive Mode

This checkbox is for use with CD-ROM drives that do not support SEEK commands or other CD-ROM drive commands. The user may use this option if CD Wizzard is getting errors when tracks are changed or when skipping through the tracks of the disc. The user can also try this option when miscellaneous errors are occurring during playback.

Please see the Common Problems topic for more information.

Buttons - butt_

A/B Button



This button will allow the user to select a portion of a track to be played over and over. The user starts the player playing a track then presses the A/B Button the first time to select the start position (the A position). Next, the user presses the A/B Button again to select the end position (the B position). The selection of the track will play over and over until the A/B Button is pressed again or any other player button is pressed.

Add All Tracks Button

This button will add all tracks to the end of the Programmed Tracks listbox.

Add Track(s) Button

This button will add all selected tracks to the end of the Programmed Tracks listbox.

Browse for Mixer Button

This button will display a file open dialog box so the user can select the mixer program supplied with the user's sound card.

Cancel Button

This button will cause the current dialog to be closed. All information entered on the dialog will be discarded and not saved.

Check or Money Order Registration Button

This button will display a dialogbox with the instructions on how to register CD Wizzard by mail with a check or money order.

Clear Button

This button will clear the Mixer Name field.

Clear All Tracks Button

This button will remove all tracks in the Programmed Tracks listbox.

Clear Track(s) Button

This button will remove selected track(s) in the Programmed Tracks listbox.

Close Button

This button will cause the current dialog to be closed.

Compuserve Online Registration Button

This button will display a dialogbox with the instructions on how to register CD Wizzard online by using Compuserve's Online registration system.

Copy Button

This button will cause the selected text in the Edit Control to be copied to the windows clipboard.

Copy Tracks Button

This button will bring up the Copy Tracks dialog on the selected disc. All disc information, such as Disc Name, Artist, etc. and track information for the current playlist will also be displayed.

Credit Card Phone Registration Button

This button will display a dialogbox with the instructions on how to register CD Wizzard by phone with a credit card.

Delete Button

This button will cause all information about the selected disc to be deleted.

Down Button



This button will cause the volume of the CD player to be decreased.

Edit Button

This button will bring up the Edit Disc Data dialog on the selected disc.

Edit Disc Data Button

This button will invoke the Edit Disc Data dialog for the disc in the CD player.

Eject / Close Button



If a CD is in the drive, this button will cause the CD to be ejected from the CD player. Some CD-ROM drives have an automatic loading door for those drives. This button will also close the door when a new disc is entered.

Exit Button



This button will cause CD Wizzard to exit.

Export Button

The Export Button is used to export the data of the selected discs to a file. The exported file can then be imported into any one of many database and word processing products currently available. Almost all of these products support a flat file import. This allows users to utilize the power of the database or word processor to print or create reports on their CD collection that is stored in CD Wizzard.

When the Export Button is pressed, a Save As Dialog will allow the user to select the exported file's name and location. Then the Export Options Dialog will allow the user to select the format for the exported file such as delimiters and separator characters. After the file has been exported, the user can go to the database or word processor and import the file.

Forward Button



This button will cause the CD player to skip forward 15 seconds in the current track. If the button is held down, it will continue to skip forward in 15 second intervals.

Help Button

This button will start the windows help system with help on the current dialog.

Large Button



This button will cause CD Wizzard to go into large mode. CD Wizzard stays in large mode until it is set to small mode again.

OK Button

This button will cause the current dialog to be closed and for all information on the dialog to be saved.

Output Meter Button



This button will cause the output meter to be turned on or off. Please be aware that the output meter takes a lot of system resources. It may cause your system to slow down when other applications are executing.

Play / Pause Button



This button will cause the CD player to begin playing, if the CD player was paused or stopped. If the CD player is playing, it will pause playing.

Play Track Button

This button will cause the CD player to begin playing at the track selected in the listbox.

Program Tracks Button

This button is used to bring up the Program Tracks dialog. This button is only active when the program playing mode is selected.

Register Button

This button will cause the user's name, key and password to be validated and saved in the system. The program will now be registered and all software security will be deactivated. When this occurs, the program will be fully functional.

Reverse Button



This button will cause the CD player to skip back 15 seconds in the current track. If the button is held down, it will continue to skip back in 15 second intervals.

Save Button

This button will cause all information on the dialog to be saved.

Scan Button



This button will cause the first five seconds of each track in the playlist to be played. Pressing the scan button while scanning will cause the track to start playing normally.

Select All Button

This button will select all entries in the Disc Name List box.

Set Tracks Button

This button will clear all currently selected tracks in the Programmed Tracks listbox and then create a list of tracks in the Programmed Tracks listbox that equals or comes as close as possible to the number of minutes entered.

Small Button



This button will cause CD Wizzard to go into small mode. CD Wizzard stays in small mode until it is set to large mode again.


Start Mixer Button



This button will cause the currently selected mixer program to run. The mixer program is selected in System Options.

Stop Button



This button will cause the CD being played to stop. The CD player will reset to the first track in the sequence. The CD player can be restarted by pressing the play  button.

Track Forward Button



This button will make the next track the current track. If the CD player is currently being played, the track will begin to play. If shuffle or programmed is selected, the next track in the playlist will be selected to play.

Track Info Button

This will invoke the Track Information Dialog for the tracks currently being played in the CD player.

Track Reverse Button



This button will either make the previous track the current track or jump to the beginning of the current track if more that 5 seconds have been played. If the CD player is currently being played, the track will continue to play at the new location. If shuffle or programmed is selected, the previous track in the playlist will be selected to play.

Up Button

+

This button will cause the volume of the CD player to be increased.

Miscellaneous - misc_

CD-ROM Installation

CD-ROM Audio in Windows 3.1

This is a complete description of the support for CD-ROM Audio in Windows 3.1. This article will try to completely explain the CD-ROM environment. It will also include a detailed list of things that need to be done to use Music CDs in the user's CD-ROM under Windows 3.1.

The support for CD-ROM Audio is a multilevel cooperation of three levels of drivers. They are the manufacture's CD-ROM device driver, Microsoft's MSCDEX.EXE, and Windows 3.1 MCICDA.DRV. These are the three drivers required to use the CD-ROM Audio support in Windows 3.1. The manufacture's driver interfaces directly to the CD-ROM device. It talks to MSCDEX.EXE. MSCDEX.EXE is the programmer's Red Book CD Audio driver. It talks to MCICDA.DRV of Windows 3.1. MCICDA.DRV supports Windows applications using CD Audio. It talks to Windows programs. CD Wizzard(TM), a windows application, talks to MCICDA.DRV.

All three drivers must be installed and configured correctly to play music CDs. When Windows 3.1 setup program is run, it checks for the presence of MSCDEX.EXE. If it is found, it will create an entry for MCICDA.DRV in your system. But, it will NOT install the driver! This must be done after the installation is completed. CD Wizzard gives instructions on how to do this when it detects the situation.

The following are the exact steps to add all these drivers to your system:

- A) Add the manufacture's driver supplied with the CD-ROM Drive to CONFIG.SYS.
- B) Add MSCDEX.EXE from manufacture or Microsoft to AUTOEXEC.BAT.
- C) Configure the above drivers for each other. Use the documentation from manufacture.
- D) Go to Control Panel in windows and select Drivers Icon.
- E) Press the ADD Button.
- F) Select "[MCI] CD Audio" entry and press OK Button
- G) Insert Windows Disk asked for and follow instructions.
- H) Restart windows. CD Wizzard should now be able to run in order to play Music CDs. If the

MCICDA.DRV is not yet running after using the above steps, these instructions should be followed:

- A) Edit SYSTEM.INI.
- B) Find the [MCI] section.
- C) There should be a "CDAudio=mcicda.drv" entry. If not, add it.
- D) Save SYSTEM.INI and exit editor.
- E) Do a directory listing on your <windows>\SYSTEM directory.
- F) Is MCICDA.DRV present? If not:
 - 1) Search Windows 3.1 Install disks for a file "MCICDA.DR_". On 3 1/2 HD it is #4.
 - 2) Use EXPAND.EXE command to expand file to <windows>\SYSTEM.
 - 3) Restart windows.

One major problem that we have seen with CD-ROM drives is that the lens pickup system gets dirty easily. This can cause the CD-ROM drive to act very strange. It will skip in playing songs, reset the drive, or not play a disk at all. To clean a CD-ROM drive, a CD cleaning disc can be bought at most audio stores. Run the disc through the drive. This should solve the problem. You should clean your drive at least every 60 days.

Common Problems

This section contains a list of common problems using CD Wizzard. The following are the known problems:



Error Number: 262. This error is a general CD-ROM Driver error code. It is usually due to the CD-ROM drive not supporting SEEK commands. Try setting the Tolerant Drive Mode option in Player Options. This should remove the error.



CD-ROM players have problems playing some music CD discs. The player will appear to loop or just reset occasionally. This could be due to a dirty lens pickup system. Buy a CD cleaning disc from an audio store. Run the disc through the CD-ROM. If the problem is still present, contact the maker of the CD-ROM for service.



Forward and reverse commands take a long time to reposition. This appears to be a bug in some CD-ROM device drivers. Try setting the Tolerant Drive Mode option in Player Options. This should remove the error.



After inserting a disc CD Wizzard does not realize a disc is in the CD-ROM drive. Try setting the Tolerant Drive Mode option in Player Options. This should remove the error.



If CD Wizzard is displaying many different errors and does not seem to work at all, it may be due to a bad MCICDA.DRV file. This file is sometimes corrupted during Windows install. Try reinstalling this driver as explained in the second section of CD-ROM Installation.



Data CD-ROM discs do not have the same format as Music CDs. They will cause a Data Disc message to be displayed.



While CD Wizzard is playing, during the access to your CD-ROM, your system may slow down slightly. This is due to the multimedia extensions of windows. The slowdown should only be minor.



If you see the display of CD Wizzard update but hear no sound, make sure your CD-ROM drive's output is hooked up to the input of the sound card. You can use a simple patch cord to connect the line out of the CD-ROM drive to the line in of the sound card. Then set Line In of the System Options Dialog.



If the Output Meter display is just a line, then most likely CD input is not selected in your mixer. Press the Mixer Button and select CD input.



The system slows down when the Output Meter is on. The Output Meter uses a lot of system resources. Some systems are not able to keep up with the demands of the Output Meter and other applications at the same time. Turn the Output Meter off when other applications are run.

Copyright and Licensing



Copyright © BFM Software 1994
Copyright © Brett McDonald 1994

Following are the system requirements:

- 1) 386 or higher processor
- 2) Windows 3.1 or higher
- 3) Mouse or other pointing device
- 4) Color monitor - High SVGA resolution recommended.

ATTENTION Registered WinCD user's: Your password will work with CD Wizzard, just enter your name exactly as you did in WinCD along with your old password into CD Wizzard. WinCD is no longer supported by BFM Software, CD Wizzard is a complete replacement for WinCD. Please contact us for further details.

This software is shareware. This software is NOT free. If you like the software and continue to use it, you MUST register the program. Registration Fee: \$15.95 US.

BFM Software
Brett McDonald
38602 Lancaster Drive
Farmington Hills, MI 48331
Phone: (810) 661-1797

To receive a disk with our latest software add \$4.00 to the registration fee.

Please include your name EXACTLY as you want it registered and the generated key from the registration dialog box.

We are a member of the Compuserve Shareware Registration system. You may register BFM Software products with Compuserve. They will add the fee to your bill and we will send you the registration. To access this system, logon to Compuserve and enter "GO SWREG". Select Register Shareware. Search for the keyword "BFM" to find all BFM Software products. Then enter the information requested. Please place your key in one of the extra fields.

Orders with MC, Visa, Amex, or Discover are made by calling Public (software) Library at 800-242-4775 or 713-524-6394. This number is for orders ONLY.

Ask to register CD Wizzard product number 11282. Please give name, address, key, and credit card information. A disk with our latest software will also be shipped for an extra \$4.00.

PsL will add \$20.95 plus \$4.00 shipping, if a disc was sent, to your Credit Card bill. BFM Software will send the registration by US Mail within a few days.

Following are our BBS IDs:

Compuserve ID - 73770,1254
American On-line ID - BrettMc

You may distribute this software as long as the following files are included:

CDWREAD.TXT
CDAUDIO.TXT
CDW.EXE
CDW.HLP

All of the above files, must be combined into a single file ZIP or other compression format for distribution.

Beyond a fee for the reproduction and media cost, no fee may be charged for distribution of this software.

This software claims no warranty, implied or otherwise. This software is provided "AS IS". The author claims no responsibility for any damages that might be caused by the use or abuse of this software. This software remains the property of the author. This software may not be modified in any way.

Registration

You may register this product two different ways. You can mail us a check drawn on a US bank or a money order. If you are a member of Compuserve you can register on-line.

To send us a check use the Registration Dialog that is located under the FILE menu option on the main menu. You may also print the Registration Form from help.

We are a member of the Compuserve Shareware Registration system. You may register BFM Software products with Compuserve. They will add the fee to your bill and we will send you the registration. To access this system, logon to Compuserve and enter "GO SWREG". Select Register Shareware. Search for the keyword "BFM" to find all BFM Software products. Then enter the information requested. Please place your key in one of the extra fields.

Registration Form

Note: To print this registration form select FILE then PRINT TOPIC from menu.

CD Wizzard Registration Form

Version:

Name to be registered:

Generated key:

Ship to address:

Please send check or money order for \$15.95 US To:

BFM Software

Brett McDonald

38602 Lancaster Drive

Farmington Hills, MI 48331

To receive a disk with our latest software add \$4.00 US

Technical Support

BFM Software will try to help any user to the fullest of our abilities. We do prefer to help registered users with problems concerning our software, but we will try to help anyone we can. Below are the ways a user can contact us:



Electronic Service Compuserve - our ID is 73770,1254



Electronic Service American On-line - our ID is BrettMc



Our mailing address:

BFM Software
Brett McDonald
38602 Lancaster Drive
Farmington Hills, MI 48331



Phone Number: (810) 661-1797

Menus - menu_

Menu Commands

These are the menus on the main windows menu bar.



File Menu



Discs Menu



Options Menu



Help Menu

The CD-ROM Controls Menu is added to the system menu for the main and icon window. The user simply clicks on the system box at the top of the main window or clicks on the icon when iconized.

File Menu

The File Menu includes commands that enable the user to get control of the entire program. They are as follows:



Register Command



CD-ROM Controls Menu



Uninstall Command



Exit Command

Register Command

Selecting the Register Command will cause Registration dialog to be displayed. The register command is used to register the program.

The register dialog box has directions on the steps needed to register the program. This program must be registered after the 15 day trial period.

CD-ROM Controls Menu

These are the menu commands that control the CD-ROM drive. They are listed below:



Play / Pause - Start playing a CD or Pause playing.



Scan - Play the first five seconds of each track in playlist.



Stop - Stop Playing.



Eject / Close - Eject the current CD or close the drive door.



Track Reverse - Go to the previous track in the playlist.



Track Forward - Go to the next track in the playlist.



Volume Up - Increase the volume of the CD-ROM device.



Volume Down - Decrease the volume of the CD-ROM device.

Uninstall Command

Selecting the Uninstall Command from the File Menu will cause a message box to be displayed. The user can select YES or NO to uninstall CD Wizzard.

The following files are removed from the user's system in the uninstall processing:



CDWREAD.TXT - text file with miscellaneous CD Wizzard information



CDW.HLP - CD Wizzard help file



CDW.INI - CD Wizzard parameter file



DATAxx.INI - CD Wizzard database files



CDW.EXE - CD Wizzard program file



CDAUDIO.TXT - Audio installation help file

Note: If SHARE.EXE is installed in the user's system, CD Wizzard will come across an error in the uninstall process. SHARE.EXE will not allow a program to access a file that another program is accessing. Windows is executing CDW.EXE so the program cannot access it to delete it. The error message can be ignored and the CDW.EXE file deleted by hand.

Exit Command

Selecting the Exit Command from the File Menu will terminate CD Wizzard.

Discs Menu

The Discs Menu includes commands that enable the user to work with CD Discs. They are as follows:



Display Track Playlist Command



Edit Current Disc Data Command



Copy Track Playlist Command



Maintain Discs Command

Display Track Playlist Command

This command displays the Track Playlist Dialog with information about the current track playlist. This dialog allows the user to select a different track to be played.

Edit Current Disc Data Command

This command displays the Edit Disc Data Dialog with information about the inserted CD Disc. This dialog allows the user to change all the information about the disc in the database.

Copy Track Playlist Command

This command displays the Copy Tracks Data Dialog to allow the user to copy disc information to the windows clipboard.

Maintain Discs Command

This command displays the Maintain Discs dialog box with all the discs CD Wizzard has saved in its database. This command can be used to delete unwanted discs from the database.

Options Menu

The Options Menu includes commands that enable the user to control options of the program. The options are of the following categories:



Display Options - options to configure the main window's look and feel.



Layout Options - options to configure the main window's layout.



Playback Options - options to configure the playing of CDs.



System Options - options to configure the user's CD-ROM Drive and other system settings.

Help Menu

The Help Menu includes options that enable the user to get help for the program.

For more information, the user should select the Help Menu Command Name:



Help Index Command



Using Help Command



About Command

Help Index Command

The Help Index command is used to invoke the Windows Help engine. It will start up with the help index for CD Wizzard.

Using Help Command

The Using Help command will display help on the Using Windows help system.

About Command









The About command will display a short dialog box that displays copyright and registration information. The More button may be pressed to display a picture of the development team for this software. The Register button may be pressed to register the software.

Keyboard - key_

Keyboard


Keyboard commands are shortcuts to the button options.

The following are the keyboard shortcut commands:

Button	Short-cut Key
 <u>Play / Pause</u>	'Ctrl-P'
 <u>Scan</u>	'Ctrl-A'
 <u>Stop</u>	'Ctrl-S'
 <u>Eject / Close</u>	'Ctrl-E'
 <u>Track Reverse</u>	'Ctrl-R'
 <u>Track Forward</u>	'Ctrl-F'
 <u>Volume Up</u>	'Ctrl-U'
 <u>Volume Down</u>	'Ctrl-D'

Mouse - mouse_

Mouse

The mouse has a few special functions in CD Wizzard. In the main window it is used to press the buttons. In certain areas the mouse may be clicked to have special meaning. When the  cursor is displayed, these special actions are active. The Status Bar will have a short message about what happens in that area, if the user has the Status Bar Help Text option turned on in the Layout Options.

When the CD Wizzard icon is displayed, the right mouse button may be pressed on the icon to toggle play or pause mode.

Definitions - def_

CD Wizzard Definitions

The following are the defined terms of the program:



CD-ROM



CD Wizzard



Clipboard



Disc



Mixer



Output Meter



Playlist



Track

CD-ROM

A CD-ROM stands for Compact Disc Read Only Memory disc. A CD-ROM drive uses a laser beam to read very tiny ones and zeros from the encoded foil layer of the disc. A CD-ROM drive can handle over 650 megabytes of data.

CD Wizzard (tm)

CD Wizzard is a copyrighted work created by BFM Software.

CD Wizzard is a trademark of BFM Software.



Copyright © BFM Software 1994

Copyright © Brett McDonald 1994

All rights reserved by author.

Clipboard

This is the Windows Clipboard. The clipboard is used to place temporary information that is being copied. A user places information on the clipboard by copying and then pastes the information into another program.

Disc

A disc stands for a CD-ROM disc. Discs come in a few difference types Audio - contain audio tracks, Data - contain a data track, and Mixed - which contain both a data track and audio tracks. The CD player you might have in your home can only read Audio CDs. The CD-ROM in your computer can read all three.

Mixer

A mixer is a program that is used to control the combination of multiple inputs into a single output. CD Audio, WAV output, MIDI, and Line-In are examples of input sources. The mixer combines the inputs into one signal that is sent to the speakers. A particular input source must be selected to record. This is the same as a home stereo, where the tuner is used to select the source to record.

Output Meter

An Output Meter is a graph of the output levels of a signal. The chart shows the digital source in a line graph. The chart is updated as the signal is received.

Playlist

This is the list of tracks that is currently selected to be played. In normal mode all tracks are played sequentially, in shuffle the tracks are in random order, and in programmed mode the tracks are in the order the user selected.

Track

A track is a part of a disc that can contain one song for an audio disc or many files of information on a data disc. A track on CD-ROM is different than a computer disk because the tracks spiral together. Rather, a computer disk has many circular tracks that do not intersect. This is why CD-ROM drives have a much slower access time than computer disk drives.

