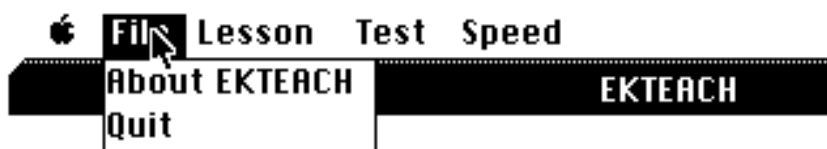


Brief Instructions for EKTEACH, Version 1.0

EKTEACH is intended to help teach some basic aspects of electrocardiogram (EKG) reading. This version was prepared using the Megamax C Development system V. 3.0d.

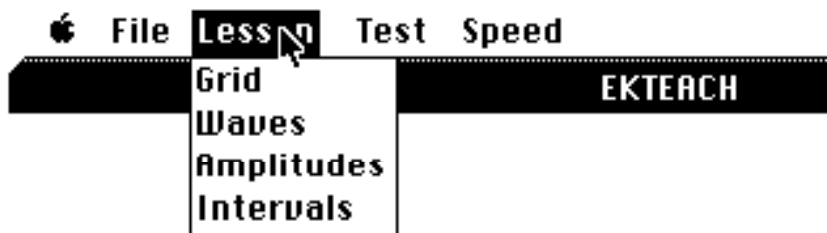
There are four menus: "Apple," **File**, **Lesson**, **Test**, and **Speed**. The Apple menu brings up desk accessories in the conventional manner. The **File** menu has only two items: **About EKTEACH** (ego screen), and **Quit**.



The **Speed** menu sets the rate of delivery of the animated parts of the lessons. the default speed is **Medium**, presumed to be a comfortable reading speed. **Fast** is most useful when skimming through the program and **Slow** is most appropriate when you feel guilty and want to punish yourself.



Use the **Lessons** menu to select an area for instruction.



The **Grid** lesson is concerned primarily with the calibrations of the EKG chart paper. **Waves** teaches the nomenclature of the fundamental waves and deflections. **Amplitudes** demonstrates the measurement of the voltages of the EKG deflections, and **Intervals** shows how the P-R and R-R intervals are measured. In all of the lessons there are two modes of program control. Some of the text and "animation" are automatic. In addition there appear, on strategic occasions, buttons in the lower right area of the screen with inscriptions such as **More?**, **Next?**, or **Done?**. When this happens, the program flow is suspended until the user

clicks on the button. There may also be a button above these with **Quit?**. Clicking on this button permits the user to exit the program and return to the finder.



The three items in the **Test** menu invoke test modules intended more for review than for evaluation of the student. The EKG tracings that appear in these sessions should appear different from those in the lessons, but of reasonable morphology. The **Waves** test requires the user to respond by clicking on the requested deflection. A **Help** button is available for the perplexed. The **Amplitudes** and **Intervals** tests require a keyboard response. The user's answer appears in a dialog box in the upper right portion of the screen, and s/he must click the **OK** button in order to "enforce" the answer.

Note: Do not use the finder option **Set Startup** on this program.

For questions or bug reports, please contact:

Stephen Dubin, V.M.D., Ph.D.

269 Orchard Road

Springfield PA 19064

or (preferably) send EMAIL to:

CIS: 76074,55 or DELPHI: ESROG or Genie: S.DUBIN