

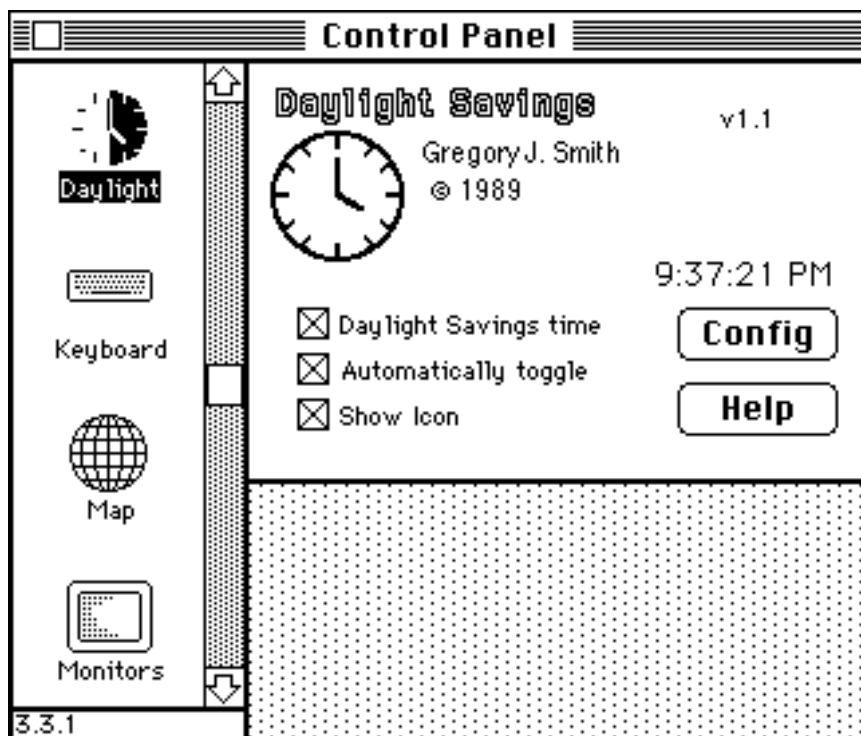
Daylight Savings

by

Gregory J. Smith

Daylight Savings is a *Control Panel* device (CDev) that will allow your Macintosh to automatically adjust its clock forward or backward at the appropriate times of the year. Just drag Daylight to your System Folder before opening the Control Panel Desk Accessory and you will be ready to go.

The program consists of two parts: the actual Control Panel device and a built-in INIT that checks your clock at StartUp and adjusts it for Daylight Savings Time, automatically. The CDev alone can toggle Daylight Savings Time on and off, adjusting your system clock at the same time. However, the primary purpose of the CDev is to control the INIT. The Automatically toggle checkbox tells the INIT that it has permission to adjust your clock as necessary. Otherwise, the INIT will just exit immediately after being loaded. The Show Icon checkbox tells the INIT whether or not it should display its Icon when your Mac boots. Whether or not Show Icon is enabled, Daylight will display one of two icons whenever it adjusts your clock for you. One icon is a clock with an arrow moving in the counter-clockwise direction. This icon is displayed when daylight savings time is being turned off. The other icon has an arrow pointing in the clockwise direction for when daylight savings time is being turned on.



There are also two buttons in the CDev. The Help button displays a brief message about Daylight Savings. The Config button will let you tell the INIT when it should toggle Daylight Savings Time. The defaults are to turn on Daylight Savings on the first Sunday of April and to turn it back off on the last Sunday of October. Both toggles occur at 2:00 AM. The Config button displays a dialog box containing the current settings. You may change these as you

see fit.

Turn Daylight Savings on:		Turn Daylight Savings off:	
Which:	First	Which:	Last
Day:	Sunday	Day:	Sunday
Month:	April	Month:	October
at:	2:00	at:	2:00
Adjustment in minutes: 60			
Cancel		Okay	

The popup menus allow you to choose when you want your clock adjusted by selecting the day of the week, the month of the year, and which week in that month to make the change. In addition to any of the twelve months, you may also select a season when you want your clock adjusted. The four seasons are located at the bottom of the Month menu. For example, you might wish to turn off daylight savings time on the first Sunday of Autumn. If you choose to use the seasonal setting, the Daylight INIT will calculate the dates for the season changes and adjust your clock based on that time. You may also adjust the time you want the change to occur by clicking on either time and using the adjustment arrows to change the time. The arrow to the left of the time moves the time in one hour increments. The right arrow moves the time in one minute increments. You may also adjust the amount of time that you clock will be moved in a similar fashion.

Selecting a season from the Month menu automatically extends the Which menu to allow selection of the first through the last (13th or 14th) week of the particular season. In addition to selecting the day of the week for the clock shift, you may specify a specific Day of the month. Selecting Day from the Day menu will automatically extend the Which menu to include the days (1-31) of the month. This option will allow you to pick the absolute date on which your clock should be adjusted. Please note that the Day menu item will not be available if you have chosen to base your clock change on the seasons.

Daylight Savings was written using THINK Pascal 2.0 and runs on System 6.0 or higher. Daylight Savings is Freeware. You may distribute this program in whatever way you like. However, commercial distribution is prohibited without prior consent of the author.

Suggestions are welcome. Send to:

Greg Smith
Bucknell Computer Services
Bucknell University
Lewisburg, PA 17837

or to <smith@amethyst.bucknell.edu> or <smith@bknlvms.bitnet>

Version 1.1

September 27, 1989.

©1989 Gregory J. Smith