

FontPower Help

The following is a list of the help topics in the FontPower Help System.

Overview

[What Is FontPower?](#)

[Getting Started](#)

[Registering Your Copy](#)

[Registration Form](#)

[Accessing Your Fonts](#)

[FontPower Files](#)

The Group Manager

[Group Manager Overview](#)

[Group Basics](#)

The Disk Manager

[Disk Manager Overview](#)

[Disk Basics](#)

System Setup

[System Setup](#)

© 1994 Lightning Systems

What Is FontPower?

FontPower is a program designed to help you make more effective use of your type library. It makes font management as easy as a few mouse clicks. If you store fonts on floppy disks, FontPower will take care of all the loading and unloading for you!

The basic building block of FontPower is the group. A group is simply a collection of fonts, usually for a certain job or topic. For example, you might want to make a group of all your corporate fonts, one for your personal fonts, etc. When you need to use the group, drag it to the "Add" icon and FontPower will do the rest for you!

FontPower works with a drag-and-drop interface. So all the usual stuff about using drag-and-drop applies here. For more information, check your Windows manual.

FontPower will work with both ATM and TrueType fonts. FontPower will recognize ATM fonts even if ATM is not installed, but it won't activate them.

Special Thanks To: Walt Knowles (my dad) for help with writing the original FPOWER.DLL, Matthew Lang for ideas about making the interface more usable, and Lorelette Knowles (my mom) for her support in building the project and testing my interface.

FontPower 1.0b was developed on a 386DX-33 with 8MB RAM, a 200 MB hard drive, SVGA graphics, Windows 3.11 and Adobe Type Manager 2.6 with 450 fonts; and a Hewlett-Packard LaserJet IIIP with and without a PacificPage P-E PostScript emulation cartridge. FontPower was also tested on several other systems, running Windows 3.1 and ATM 2.0 and 2.5.

[FontPower Version History](#)

[About the Author](#)

Getting Started

To install FontPower, double-click **fpower.exe**. FontPower will load, then it will display a dialog box asking you if you want to install your fonts.

If all of your fonts are stored on your hard drive (in the local directory), this will save you a lot of trouble, and it basically shields you from having to use the Disk Manager. If you plan to use fonts stored on floppy disks immediately, say "No".

If you say "Yes," FontPower will install your fonts. You will see a thermometer box with the heading "Loading Fonts." This may take from a few seconds to several minutes, depending on the speed of your system and how many fonts you have on your hard drive.

Once FontPower installs your fonts (if you want it to), you are now ready to start building groups.

Registering Your Copy

FontPower is Shareware. You can try FontPower for 90 days for evaluation purposes. If you wish to continue using FontPower, you must register your copy of FontPower. Registration will clear your conscience, support a young programmer who put lots of his time into this application, get discounts and upgraded versions of FontPower long before they arrive on BBS's, and get a registered version of FontPower that doesn't have the nag screen!

To register your copy, print out the [registration form](#), and send **\$20** in US cash, check or money order to:

**Martin Knowles
11020 NE 64th St
Kirkland, WA 98033**

Please make all checks payable to Martin Knowles.

FontPower Registration Form

Name: _____

Address: _____

City: _____ State: _____ Zip: _____

Country: _____

Do you use ☐ ATM (ver_____) ☐ SuperATM ☐ Mac ATM
 ☐ Win 3.1 TrueType ☐ Mac TrueType ☐ Other TrueType
 ☐ Bitstream Facelift ☐ Aldus PageMaker ☐ Adobe Illustrator
 ☐ PostScript printer ☐ PCL printer ☐ Inkjet printer

What changes/features would you like to see in future versions of FontPower?

_____ Send me information on site-licensing FontPower

Qty

Unit Price

FontPower 1.0b

x20.00

() 3.5 Disk

() 5.25 Disk

Total US Funds

PLEASE MAKE ALL CHECKS PAYABLE TO MARTIN KNOWLES!

Send to:

Martin Knowles
11020 NE 64th St
Kirkland, WA 98033

Thank you for registering FontPower!

Accessing Your Fonts

Fonts can be stored in a number of ways using FontPower.

The first way is on floppy disks. Fonts stored on floppy disks can be added to FontPower by first inserting the disk, then using the Disk Manager to create a name for the disk and adding the contents of the disk to the All Fonts list. When a font is needed from that disk, FontPower will ask you to insert the disk; then FontPower will copy the fonts it needs from the disk to the transient directory.

The second way is to use the Local directory on your hard drive. The Local directory is simply the name that FontPower uses for the three directories where fonts are usually kept: the two ATM font directories (e.g. C:\PSFONTS and C:\PSFONTS\PFM), and the TrueType outline font directory (e.g. C:\WINDOWS\SYSTEM). To access the Local directory through the Disk Manager, double-click the Local icon. Fonts in the Local directory are never deleted by FontPower.

The third way is to store fonts in separate directories on your hard drive. This is the most inflexible scheme. The fastest way to handle fonts you want to use that have been stored in this manner is first to copy them to the Local directory, then to activate them from there.

You organize fonts in FontPower by groups. A group is simply a collection of fonts. For example, you might set up a group for your corporate fonts. You might make another for newsletter fonts, for a particular publication, or anything else. Of course, you don't have to use groups, but they allow you to move fonts in and out of your system more efficiently. You create groups using the Group Manager.

Fonts on Network Drives

FontPower will activate fonts from network drives. Make sure that, before you activate your network fonts, Windows will still have access to the network path when you start Windows the next time. To avoid this problem, copy network fonts from the network drive to your Local directory.

Fonts on CD-ROM Disks

You will need to insert the CD into your CD-ROM drive before you copy or activate fonts stored on CD's. You cannot currently assign a name to a CD-ROM disk. Because FontPower recognizes a CD-ROM disk the same way as it does a directory on your hard drive, it will not copy CD-ROM fonts into your Transient directory. You will need to copy them manually into your Local directory or another hard drive directory if you want to use the fonts without that particular CD being in the drive.

Transient Directory

The transient directory is the directory where FontPower stores fonts that have been loaded from disks. Unless the "Don't delete transient fonts" option in the System Setup screen is checked, fonts that were in the transient directory that are not needed in the new group are deleted, hence the "Transient" name.

The transient directory defaults to the value in your **temp=** environment variable. If this is a RAM disk, you will need to create a directory on your hard drive and assign the Transient Directory to it using the System Setup screen.

Local Directory

In FontPower, the three (at most) font directories on your system are accessed collectively as one directory, called the Local Directory. This consists of your PostScript target font directories (\psfonts and \psfonts\pfm) and your TrueType font directory (\windows\system). FontPower will never delete fonts from your local directory (unless you drag fonts from it into the Black Hole in the Disk Manager).

You can customize which directories are used as the Local directory in the System Setup screen.

FontPower Files

The FontPower package includes:

FPOWER.EXE	FontPower Program
FPOWER.DLL	FontPower DLL
FPATM25.DLL	DLL for managing ATM 2.5
FPOWER.ICO	Program Manager Icon
FOP.FON	FontPower listbox font
FPHELP.HLP	The help file you're reading
FPOWER.WRI	Release notes. Read this before using FontPower (Write format)
TB30RUN.EXE	ToolBook 3.0 runtime
TB30NET.EXE	
TBLOAD.EXE	
TB30BAS.DLL	
TB30CMP.DLL	
TB30FLT.DLL	
TB30UTL.DLL	
TBKFILE.DLL	

Upgrading from 1.0/1.0a

If you are upgrading from a previous version of FontPower, you may remove the following files:

TBOOK.EXE
TBKUTIL.DLL
TBKCOMP.DLL
TBKBASE.DLL
FPOWER.TBK

Font File Formats

Font files are used by, but not created by FontPower (except FOT). Here are the ones to know:

PFM This is an Adobe Type 1 metrics file. Must accompany a PFB file of the same name.
PFB This is an Adobe Type 1 outline file. Must accompany a PFM file of the same name.
AFM You will need to convert fonts that include an AFM and INF file but no PFM file,
INF either by bringing them up in the ATM Control Panel, or by using a utility like Acute Systems' Refont. FontPower does not pay attention to AFM or INF files.
TTF Normal Windows TrueType font.
FOT TrueType metrics file. Created on-the-fly during font installation. FOT files can have a different name than the TTF file they correspond to, although FontPower creates them with the same name as the TTF. FOTs can be deleted if the corresponding TTF file is not in use.

FontPower Version History

FontPower 1.0

Initial public release

FontPower 1.0a

Fixed bugs in 1.0
Shareware fee dropped to \$20
Windows Help system added
Faster disk manager
Supports over 400 fonts, will now load over 150 fonts

FontPower 1.0b

Added better support for TrueType
Will add fonts for the PostScript driver
Will add ATM fonts on the fly if you have ATM 2.5 or above
Loads up to 300 fonts at a time
Better memory handling
[Current Group] problems fixed

System Setup

ATM

These options are shown only if ATM is available.

Font Cache

This item controls ATM's font cache. The font cache is the amount of memory ATM sets aside for font information storage. To set the font cache, either type into the field the amount of font cache you want, or use the arrows at the side of the field.

For more information about the font cache, refer to the manual for ATM.

Use resident bitmap fonts

This option controls the display of resident bitmap fonts when they are available. Resident bitmap fonts will speed up font display for fonts that you use the most, such as your corporate fonts. Resident bitmap fonts take up extra room on your system, and FontPower doesn't pay any attention to whether a resident bitmap font exists for fonts that are being loaded or unloaded, so if you have resident bitmap fonts loaded along with a font and you remove the font from your system, you might end up with stray fonts. Use with care.

For more information on using resident bitmap fonts with ATM, refer to the ATM documentation.

PostScript

This button is shown if you have a PostScript printer connected to your system that uses the standard Windows PSCRIPT.DRV driver. FontPower will not download to printers using another PostScript driver, such as MGXPS or the LaserMaster driver.

When you click this button, a dialog will appear with a list of supported PostScript printers, in the form of "Printer Name on PORT:". Select the name of the printer you wish to download to, then press the "OK" button. If you do not want to download to a PostScript printer, press the "No Printer" button. If you have a printer selected, FontPower will add and remove fonts to that printer's softfont list in WIN.INI.

FontPower

Don't delete transient fonts

This option, when checked, causes FontPower to leave inactive fonts (generally loaded from disk) in the transient directory rather than deleting them.

Copy fonts to local

This option, when checked, causes FontPower to copy fonts loaded from disk into the Local directories, rather than the transient directory. The Windows Fonts applet and the ATM control panel do this, and it's handy if you don't use removable media for most of your storage.

Load source

The pathname shown here is the pathname where FontPower loads fonts from disks. This pathname **MUST** be correct for FontPower to load fonts from disks properly.

Pathnames

Temporary files

This directory is where FontPower stores temporary files. This is used for both ATM and TrueType fonts, so you'll need to have it set correctly.

Transient fonts

This pathname is the path where FontPower stores transient fonts. Transient fonts are fonts loaded from disk or other directories that stay in the transient directory while they are active in the system. When you replace the font set, the fonts stored in the transient directory are deleted, so if you want to store fonts in a safe place, the transient directory is NOT the place to do it! Use the Local directories instead.

Warning! The default Transient fonts path is the value in your TEMP environment variable. If your TEMP variable is absent or your TEMP directory is deleted after reboot or is a RAM disk, make a directory such as \TFONTS and set your transient fonts directory to it.

FontPower files

This directory is where FontPower stores its groups and font data. This directory must be set correctly for FontPower to function, so if you've moved FontPower since installation, you'll want to change this directory to the new FontPower directory.

Local PFB

This directory is where ATM stores its outline font (.PFB) files. This directory is used for ATM only, so if you don't use ATM, you won't see this option.

Local PFM

This directory is where ATM stores font metric (.PFM) files. This is usually a subdirectory of your Local PFB directory. Like the Local PFB directory, this option is visible only if ATM is available.

Local TTF

This directory is the Local directory for TrueType fonts (.TTF). This is normally Windows' SYSTEM directory.

Martin Knowles

Martin Knowles is a 15-year-old programmer who has been working with ToolBook since before the alpha release of ToolBook 1.0. He wrote Art-TBK, which was the first ToolBook application to be posted on CompuServe, and has developed and assisted in the development of many other applications. He also runs his own consulting and programming business and designs fonts in his spare (computer) time.

Internet: **fontman@seanews.akita.com**

US Mail:

Martin Knowles

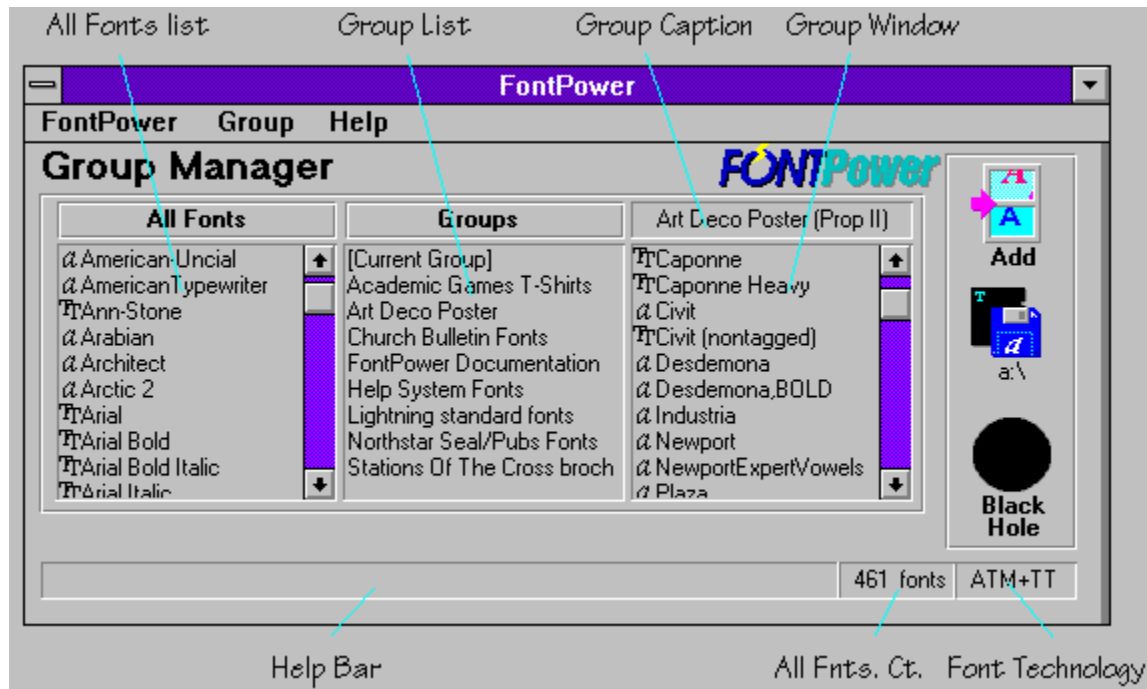
11020 NE 64th St

Kirkland, WA 98033

Group Manager Overview

The group is the basic building block in FontPower. A group is just a bunch of fonts with a name. You can do any of FontPower's drag-and-drop actions with a group. For example, dragging a group to the Disks icon copies the fonts it contains onto a disk or into a directory.

You manage groups in FontPower using the Group Manager. The Group Manager screen is shown below:



The Group Manager screen consists of these elements:

- The *Group list* is the list of all the groups available for use.
- The *All Fonts list* is the list of all the fonts available for use. This list contains the names of all fonts, whether they are in the Local directory, on a disk or stored elsewhere on your hard drive.
- The *Group window* is the window where you assemble and edit groups.
- The *All Fonts count* is the number of fonts in the All Fonts window. It's here for informational purposes, and to allow people with lots of fonts to boast about it to the last digit!
- The *Font Technology* box shows which font technologies are available to FontPower. It can display either "ATM", "TrueType" or "ATM-TT".
- The *Add/Replace* icon allows you to add fonts to Windows. You can drag either fonts or a group to any of the icons. Double-click the icon to toggle between Add or Replace. When you drag fonts to the Replace icon, the fonts you load will replace the currently loaded font set (the Current Group) instead of supplementing it.
- The *Disks* icon allows you to copy fonts to a disk or a directory on your hard drive. To change the pathname, double-click the caption under the icon.
- The *Black Hole* removes fonts or groups. In the Group Manager, no fonts are actually deleted from disks when you put them in the Black Hole.

Group Basics

[Creating a New Group](#)

[Opening Groups](#)

[Adding Fonts To Groups](#)

[Deleting Groups](#)

[Saving Groups](#)

[Using \[Current Group\]](#)

Creating a New Group

If you have started FontPower, you can just start adding fonts to the Group Window. Otherwise, go to the "Group" menu and select "New Group."

You can also create a new group by dragging the group caption to the Black Hole. This will clear the Group Window. Note that if the group that you're editing has been saved, you can clear the Group Window and not lose the group.

Once the Group Window is clear, you can start building your new group.

Adding fonts to groups

To add fonts to the group in the Group Window, select and drag fonts from the All Fonts list to the Group Window.

The listboxes (such as the Group Window and the All Fonts list) work like any other extend-select listbox. You can select a single item from a listbox by clicking it. To select multiple items, hold down the Ctrl key while clicking items. To select a range of items, click the first item, hold down Shift, then click the last item. When all the items you want are selected, press the mouse button and hold it down while dragging to the target list (in this case the Group Window).

You can also add the contents of a group to another group. To do this, open the group to be merged into. Its contents will appear in the Group Window. Drag the group that you want to merge from the Group list to the Group Window. The contents of the merged group will be added to the group shown in the Group Window.

Merging does not effect the group that you merged from.

NOTE: You cannot merge [Current Group] into other groups.

Opening Groups

To open a group, double-click on its name in the Group List. The group's name and contents will appear in the Group Window for editing.

Changes that you do in the Group Window for a group do not effect the group until you save it.

Deleting Groups

To delete a group, click its name in the Group list and drag it into the Black Hole. Deleting a group does not effect the contents of the Group Window.

When you drag the group caption into the Black Hole, it will not effect groups that are in the Group Window.

Naming Groups

To name a group, double-click the Group Caption. A dialog will appear asking for the name of the group. Enter the new name and press the Enter key or the OK button. The new name will appear in the Group Caption.

You can also select the "Name Group" option in the Group menu.

Saving Groups

To save a group, drag the Group Caption into the Group List. The name of the group will then appear in the Group List. If the group has not yet been named (i.e. it's name is "Untitled Group") FontPower will allow you to name the group before the group is saved. Alternatively, you can select the "Save Group" option in the Group menu.

Using [Current Group]

The [Current Group] entry in the Group List represents the group of ATM and/or TrueType fonts that are currently active. The Current Group doesn't have to be a FontPower group, or even made by FontPower.

The Current Group can be treated like any other group in FontPower. It can be opened, fonts can be deleted from it, it can be saved as another group, etc. The only exception is that it cannot be merged into another group.

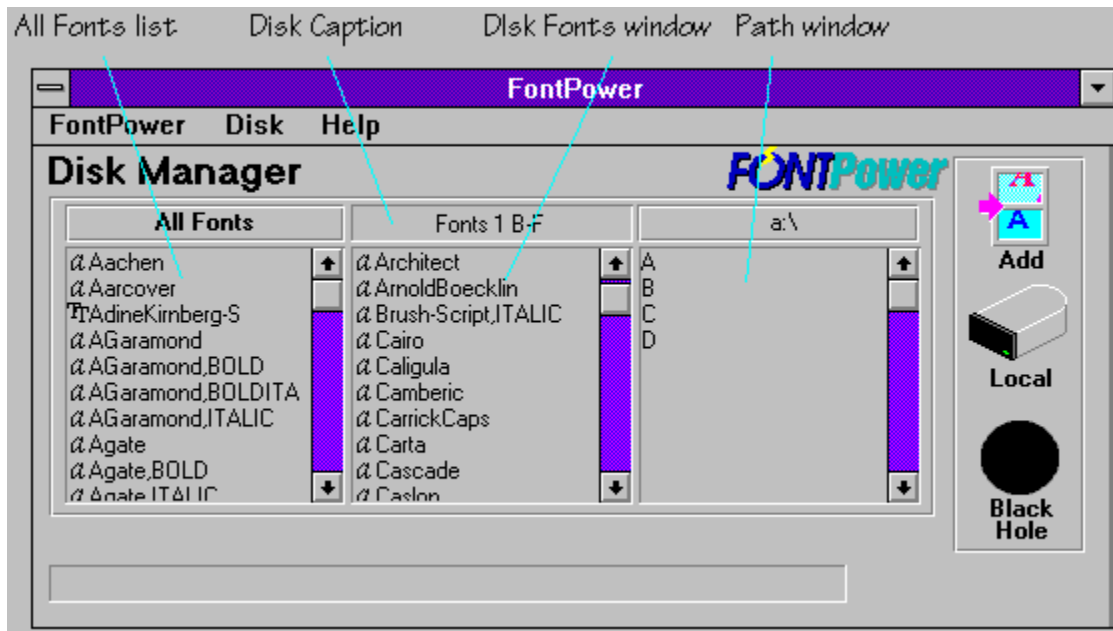
When you add a font or remove a font from the Current Group, it directly affects the fonts loaded in Windows. Consequently, if you drag the Current Group into the Black Hole, all your ATM and/or TrueType fonts will be removed. Of course, FontPower will give you a warning before doing so.

When you first load FontPower, you probably have a set of fonts on the system that you want to keep around as a group. To do this, bring up the Current Group, and name it by double-clicking the Group Caption. Save the group by dragging the Group Caption into the Group list.

The Current Group doesn't know about fonts stored on disks. If you use floppy disks or other removable media for font storage, saving the Current Group to another group is not recommended.

Disk Manager Overview

The Disk Manager is FontPower's facility for managing font files and disks. You use the Disk Manager to "tell" FontPower about your fonts. You can store fonts on individual floppy disks (or other removable media), in your Local directory or in other directories on your hard drive. If you need fonts which are stored on disk, FontPower will ask for the disks it needs, so you will have only the fonts you need copied to your hard drive.



The Disk Manager screen consists of these elements:

- The *All Fonts list* is the list of all the fonts available for use. Drag the disk caption here to add the fonts contained on the disk or in the current path.
- The *Disk caption* is the name of the disk. For removable media, you can change the name of the disk. Otherwise, this shows the complete pathname of the current directory, or (Local) if the current directory is the Local directory.
- The *Disk Fonts window* is the list of fonts contained on the current disk or in the current path. You can drag fonts from the All Fonts window to this window to add fonts to the current pathname.
- The *Path window* is the pathname selector. Double-click on items to navigate among disks or in directories on the current drive. If the current directory is the Local directory, the disk caption will show (Local) and the Disk Fonts window will show both Local directories if you're using both ATM and TrueType.

Disk Basics

[Loading Disks & Directories](#)

[Using Disks in FontPower](#)

[Renaming ATM Fonts](#)

[Copying Fonts to the Local Directory](#)

[Copying Fonts to Disks](#)

[Removing Font Files](#)

Loading Disks & Directories

To load a disk or directory, navigate to it using the Path window. If the disk or directory you select contains fonts, the "Reading Fonts" thermometer will pop up, then the fonts stored in the directory will be shown in the Disk Fonts window. If the path is a directory on your hard drive, the path window will show the pathname in uppercase (e.g. D:\FONTS). If the path is a disk that has been previously used by FontPower, the name of the disk will appear in the path window. Otherwise, the path window will show "Untitled Disk."

If the path is on your hard drive (or the Local Directory), you will not be able to edit the disk caption. To name the disk, double-click the disk caption.

To add the full contents of the disk or directory to the All Fonts list, drag the disk caption to the All Fonts list. You can also add individual fonts or a group of fonts by selecting them in the Disk Fonts list and dragging them to the All Fonts list.

Using Disks in FontPower

You can load individual floppy disks into FontPower without having to copy them onto your hard drive. When the fonts are needed, FontPower will ask you to insert the disks as needed. Typically, FontPower asks for each disk once, so you won't have to swap disk s in and out all the time.

A font stored on a disk can be treated the same way as a font stored on your hard drive. If a font that is being loaded exists on your hard drive (either in the local or transient directories), FontPower will use it directly instead of having to load it off a disk.

FontPower stores information about a disk in a file on the disk called **dsheader.fpd**. When you see one of these files on a disk that you use with FontPower, **don't delete it!** It contains essential information such as the disk number, name, etc.

You can also load the contents of a disk into FontPower multiple times. If you have a font disk loaded into FontPower, and you load more fonts onto that disk, you can load the disk in again, and you will not have duplicated fonts. If there is more than one font with a given name, FontPower will display all occurrences of that font in the current directory. This allows people with converted fonts that don't have proper style information to use the fonts (after renaming), without having to figure out which one the ATM Control Panel decided to load!

Note: This trick will not work with certain programs that use ATM directly for font display, such as Adobe Illustrator. If you use a program like this and find that it removes your renamed fonts, you need to change the name in the PFM file using a utility such as Wrefont.

Renaming ATM Fonts

Because ATM's font list is exactly what you see in the Fonts menu in your application, FontPower allows you to change the names of your ATM fonts without changing the font files themselves. This trick will not work with TrueType fonts.

To rename (or get information on) a font, double-click its name in the All Fonts list. A dialog will appear. You can change the name of the font by editing the "Name" field.

NOTE: ATM font styles are put after the font name. For example. Garamond Bold would be "Garamond,BOLD". Valid font styles are BOLD (Garamond,BOLD), ITALIC (Garamond,ITALIC), BOLDITALIC (Garamond,BOLDITALIC), and nothing (Garamond).

Copying Fonts to the Local Directory

To copy fonts from a disk (or another directory on your hard drive) to the Local Directory, load the disk as normal, select the fonts you want to copy from the Disk Fonts window, then drag them to the "Local" icon. A thermometer dialog will appear while FontPower copies the fonts. The fonts will be copied to the appropriate directories (ATM to the PFB and PFM directories and TrueType to the TrueType local directory).

Copying Fonts to disks

You can copy fonts from a font disk, the Local Directory, or any directory on your hard drive if the fonts contained in it are installed into the All Fonts list.

To copy fonts to a disk or directory, open it using the Path window, then click and drag font items from the All Fonts list into the Disk Fonts window. If FontPower needs to access font disks, it will ask you to do so, then it will ask you to put the target disk back in after all the fonts are assembled.

Removing Font Files

To remove font files from a disk or directory, select the fonts you want to delete, then drag them to the Black Hole. FontPower will ask for confirmation, then it will delete the font files themselves.

NOTE: If you delete font files that are shown in the All Fonts list, you will end up with "phantom fonts". After deleting fonts, delete the references to them in the All Fonts list.